

# J&J Sports

265 W. Main St., Patchogue NY 11772

(631) 654-2311

Patchogue Fishing Center

[www.jjsportsfishing.com](http://www.jjsportsfishing.com)



## Blackfish



Size Limit: 16" (**South Shore**)

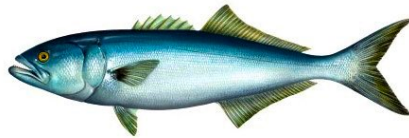
- Season Part 1: 4/1- 4/30 •Bag Limit: 2 Per Day
- Season Part 2: 10/15- 12/22 •Bag Limit: 4 Per Day

## Striped Bass



Slot Size: 28"-35"  
Bag Limit: 1 Per Day  
Season: 4/15-12/15

## Bluefish



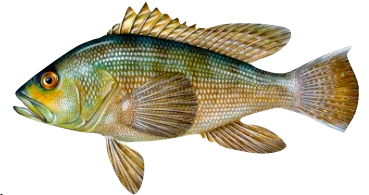
Size Limit: No Restrictions  
Bag Limit: 3 Per Day  
Season: All Year  
Including Snapper Blues

## Blackfish



Size Limit: 16" (**North Shore**)  
**Season Part 1: 4/1- 4/30**  
Bag Limit: 2 Per Day  
**Season Part 2: 10/11- 12/9**  
Bag Limit: 3 Per Day

## Sea Bass



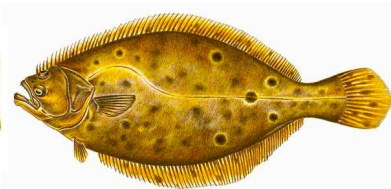
Size Limit: 15"  
3 Per Day: 6/23-8/31  
7 Per Day: 9/01-12/31

## Weakfish



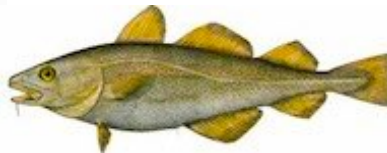
Size Limit: 16"  
Bag Limit: 1 Per Day  
Season: All Year

## Fluke



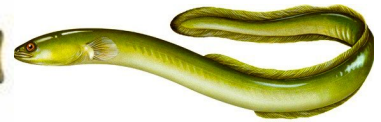
Size Limit: 19"  
Bag Limit: 4 Per Day  
Season: 5/4-9/30

## Codfish



Size Limit: 22"  
Bag Limit: 10 Per Day  
Season: All Year

## American Eel



Size Limit: 9"  
Bag Limit: 25 Per Day  
Season: All Year

## Flounder



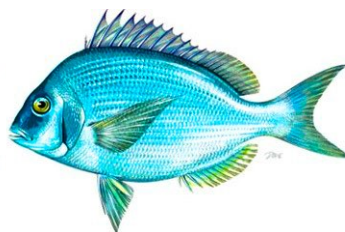
Size Limit: 12"  
Bag Limit: 2 Per Day  
Season: 4/1-5/30

## Bunker



Size Limit: None  
Bag Limit: 100 Per Day  
Season: All Year

## Porgy



Size Limit: 9"  
Bag Limit: 30 Per Day  
Season: All Year

## Blue Claw Crab



Size Limit: Hard Shell 4-1/2"  
Size Limit: Soft Shell 3-1/2"  
Bag Limit: 50 Per Day  
Season: All Year