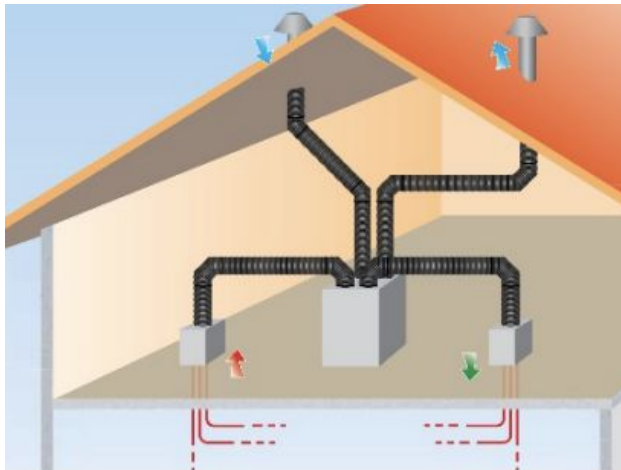


475 Installation Instructions: BRINK HRV/ERV Exterior Insulated Ducts



Application conditions and preparation

- Ambient temperature: 40 to +90°F

Required Tools



Hand Saw



Tape measure

1- Trim to length



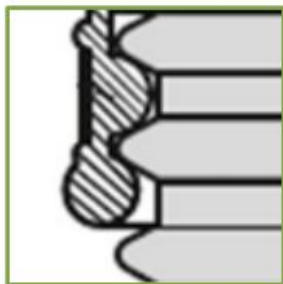
If necessary, shorten the insulated duct by using a hand saw. Saw through the pre-insulated duct, using a groove of the corrugated casing as a guide.

2- How to make a 45° corner



To get 45° bends - cut a 90° elbow in half.

3- Using connectors



Use the rubber connector to join ducts and/or elbows. Place the connector on duct and align connector centerline with end of duct. Check that connector rib sits in corrugation as shown above.

4- Fold connectors over



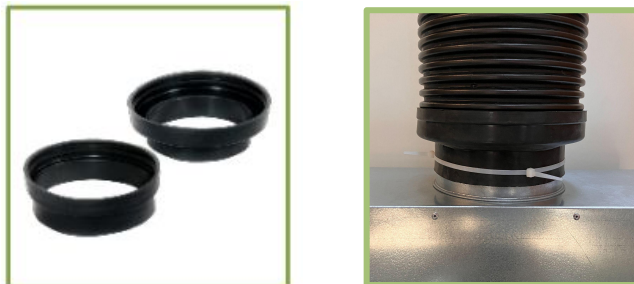
Fold back the connector as shown.

5- Connecting two ducts



Place second duct or elbow. Press the ducts together lightly and fold back the connector. Make sure connector rib slots into the corrugation as shown in step 3.

6- Using reducing connectors



Use reduction connectors when joining insulated ducts to BRINK ERV / HRV duct ports and accessories. Select appropriate size diameter for connections to be made.

First, place the reduction connector onto -insulated duct as described in step 3. Then guide connector over equipment collar. If necessary, secure with a tie wrap.

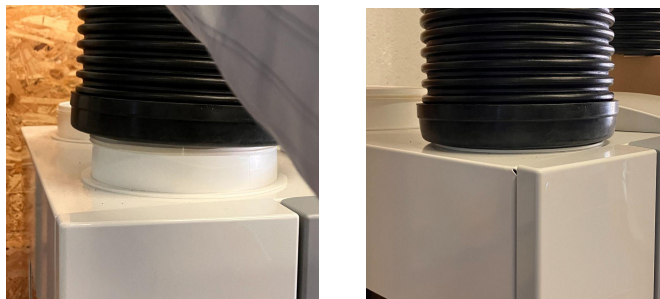
7- Insulated duct connection to FLAIR 325



Airtight insulated ducts should be used for all ducts connected to the outside to minimize heat loss and prevent condensation.

To connect the insulated ducts to the FLAIR 325, install a 200/150mm reducing connector onto the duct and invert the 150mm end of the connector within the tube

8- Insulated duct connection to FLAIR 325



Next, place on the 6.3" (160mm) duct port as shown.

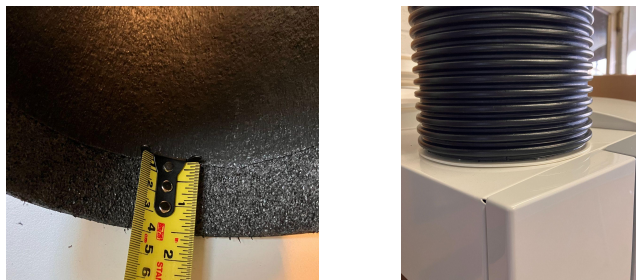
9- Insulated duct connection to FLAIR 400



To connect the Brink insulated ducts to the FLAIR 400 7" (180mm) duct ports, 1.5" of insulation must be cut/removed from the interior of the ducts.

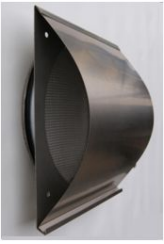
Run a utility knife along the circumference of the duct and cut away approx 50% of insulation depth (1.5" high)

10- Insulated duct connection to FLAIR 400



The insulated duct should now fit snugly on top of the FLAIR 400 duct ports.

11- Roof/wall termination



To connect insulated duct to the exterior wall grills, see steps 3-6 and use appropriately sized connector.

To connect to the exterior roof terminal follow steps 3-5, and then 13.

12- Wall termination connection cont.



The 8" (200mm) insulated duct connects to the 8" wall grill by using the Brink Connector OD200/OD200. The Brink Connector should be pulled past the gasket on the wall grill.

If there is no room to install the connectors from the exterior, the wall grill should be connected to the duct first and then the insulated duct can be inserted in the wall opening from the outside.

13- Roof flashing



a) Use flat roof flashing and create a seal from duct to roof.

b) With a conventional pitch roof gasket the insulated terminal can be used in pitched roofs as well. Make sure no corrugation pipe remains exposed to direct UV

475 insulated ducting system is an innovative, lightweight, and durably insulated piping system developed to meet the thermal and acoustic demands for balanced HRV/ERV systems. It is composed from a state-of-the-art, vapor-barrier polyolefin insulation foam attached to a durable, shockproof polyethylene outer casing. Besides a great thermal insulation and noise reduction the water-repellent inner prevents mold formation. The ducts and components are simple and safe to assemble thanks to flexible rubber connections. The ducts can be easily and precisely shortened. At the same time, the self supporting nature of the ducts limits the need for brackets and supports. It also means that it disassembled for inspection and cleaning

The connectors also connect to collars of HRV/ERV unit, silencers and to roof or wall terminals. All required ducts connections can be made with only 2-3 items from the connector assortment. In this way, 475 insulated ducts allows the installer to lay out a complete distribution network with a small number of components.

Cradle to cradle certified.