

475 Installation Instructions: ADHERO

A Self-adhered, monolithic weather resistive barrier/roof underlayment. Robust, vapor permeable, very waterproof and great cold weather performance.

BEFORE WE BEGIN

General conditions

ADHERO is to be installed with the printed side facing the installation technician; it can be installed on stable subsurfaces (e.g. OSB, chipboard, MDF, plywood sheets, wood bre underlay panels, plaster, masonry, concrete etc.). The membranes can be installed on walls either vertically or horizontally in an overlapping, waterproof manner. If significant rain loads are expected (e.g. in roof areas or on walls with high loads of driving rain), horizontal waterproof installation is recommended.

Substrate:

Before adhesion is carried out, substrates should be brushed off, wiped clean with a cloth or cleaned using compressed air. Check substrate for nails, splinters, and unnecessary protrusions - this prevents punctures and damage to the membrane. Adhesion to frozen surfaces is not possible. There must be no water-repellent substances (e.g. grease, oils or silicone) on materials to be bonded. Substrates must be sufficiently dry and stable. Bonding and joints are possible on planed and painted wood, hard plastics and metal (e.g. pipes, windows etc.), hard wood-based panels (chipboard, OSB, plywood, MDF and wood fiber board) and masonry substrates such as concrete or plaster. Concrete and plaster substrates must not be sandy or crumbling. It is your responsibility to check the suitability of the substrate; adhesion tests are recommended in certain cases. Pretreatment with TESCON Primer RP is necessary in the case of rough or porous surfaces such as wood fiber board insulation, rough/oily OSB, or substrates with insufficient stability.

Equipment:

PRESSFIX XL, ladder or scaffold, tape measure, utility knife, caulk gun, pencil, straight edge, and cutting board (plywood sheet).

Always follow site and construction safety procedures.



EXTOSEAL ENCORS

Window and door sill tape to create water proof connections to and under frames.



CONTEGA HF

Dependable, durable and flexible air tight adhesive caulk for connections between interior or exterior air barriers and/or uneven substrates. It can be used on the interior or exterior of the building.



ADHERO

A self-adhering, monolithic, vapor permeable membrane, durable weather resistive barrier or roof underlayment. This membrane doubles as a continuous air barrier and rainscreen waterproofing. Delivering first class safety and durability, is easy to install with its top release strip, full self-adhered backing and cutting guides.



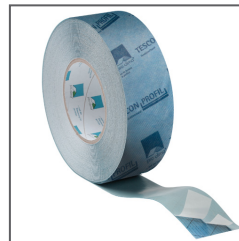
ROFLEX / KAFLEX

These EPDM gaskets create quick, flush, adjustable, and durable air sealing for wires (KAFLEX) and pipes (ROFLEX). Available in a range of sizes that seal round penetrations securely from 1/4" (5 mm) to 8 3/4" (220 mm).



TESCON PRIMER RP

Prepare substrates for greater adhesion. Primer for wood, OSB, plywood, fiberboard, brick, concrete, roofs, walls and floors to prepare the substrate for the adhesion of Pro Clima tapes and the adhesive CONTEGA HF/LINE.



TESCON PROFIL

All-around airtight, vapor-open, solid acrylic adhesive tape ideal for waterproofing and airsealing windows, doors and corner connections.



TESCON PROTECT

Pre-folded tape for quick and robust air sealing in corners, all-around airtight, vapor-open, solid acrylic adhesive.



PRESSFIX XL / PRESSFIX

Membrane application tool for use with ADHERO self-adhering WRB. Made from flexible plastic for uniform pressing of pressure activated Pro Clima adhesive, PRESSFIX-XL is a necessity for all ADHERO applications.

1 - CHECK SURFACE AND MARK POSITION



Apply TESCON Primer RP to substrates that are rough, porous, or unstable.

Adhesion tests are recommended in certain cases.

Decide on the position of the first membrane and mark this on the wall.

Determine the membrane length.

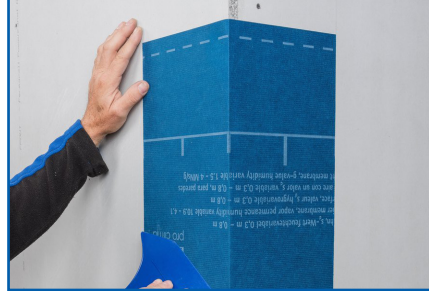


2 - LINE THE CORNERS



For interior corners and, if necessary for exterior corners too, cut a strip of ADHERO that is at least 16" (400 mm) in width and adhere it in place with equal parts on each of the walls.

Alternatively, tape can also be used at corners.



3 - CUT THE MEMBRANE AND ROLL OUT



Cut the membranes down to required length. Markings to make your work easier.

Roll out the cut strips in such a way that the release film faces outward.

4 - REMOVE SPLIT RELEASE FILM



The release film is split into two parts that are 10" and 49" (250 mm and 1250 mm) wide.

The 250 mm-wide application zone is stuck in place first.

To ensure that the wider release film can be removed more easily later on, pull off a corner of this film and fold it over.

This will then be easier to grip later on.

5 - APPLY MEMBRANE WITH CORNER



Remove approx. 8"-12" (200 - 300 mm) of the release film of the upper application zone.

Position the membrane at the marking (on the wall) and attach to the wall using the released part of the application zone.

Ensure that the membrane covers at least 6" (150 mm) of the corner strip.

6 - APPLY MEMBRANE WITHOUT CORNER



Remove approx. 8"-12" (200 - 300 mm) of the release film of the upper application zone.

Position the membrane at the marking (on the wall) and attach to the wall using the released part of the application zone.

To form the corner, guide at least 6" (150 mm) of membrane around the corner.

Smooth the SOLITEX ADHERO into place using PRESSFIX XL and avoid hollows.



7 - ADHERE THE MEMBRANES



Continue rolling out the first membrane.

Align it continuously with the marking.

Gradually remove the release film of the application zone and adhere in place.

Smooth using the PRESSFIX XL application tool to secure.

8 - REMOVE FILM AND ADHERE



Grip the wide release film by the previously folded corner and pull it off.

Smooth the tape firmly into place using PRESSFIX XL and adhere the tape to the substrate, avoiding air bubbles and folds.

9 - OVERLAP THE MEMBRANES



Apply all the remaining membranes - one by one - horizontally in an overlapping, waterproof manner.

The minimum overlap for membranes is 4"-6" (100-150 mm).

Smooth the membranes firmly into place using PRESSFIX XL, avoiding air bubbles and folds.

10 - ALTERNATIVE: VERTICAL APPLY



Attach ADHERO at the highest point.

Gradually remove the release film strips by pulling them downward.

Smooth the membrane firmly into place using PRESSFIX XL, avoiding air bubbles and folds.

11 - CUT OUT WINDOW OPENINGS



The membrane is first adhered over any window openings.

To cut out the opening, cut the membranes as indicated with the red line using a cutter.

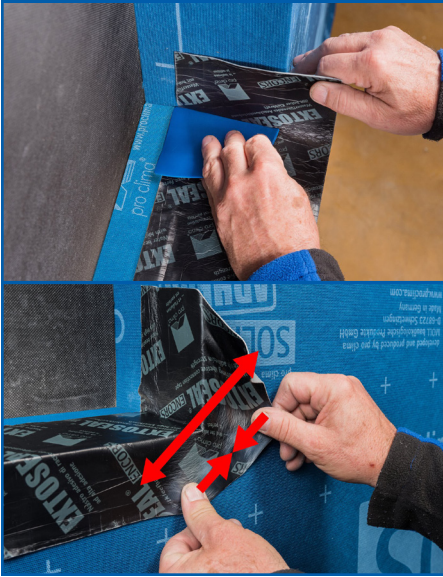
12 - STICK MEMBRANE TO SOFFIT



Once ADHERO has been cut out, fold it onto the soffit and adhere it in place.

Smooth the membrane firmly into place using PRESSFIX XL, avoiding air bubbles and folds

13 - SUB-SILL FLASHING



To form the sub-sill flashing, adhere EXTOSEAL ENCORS to an insulation wedge on the wall below the window ensuring water is guided to the outside. Allow the tape to protrude by at least 1.6" (40 mm) at front of the wall and adhere at least 6" (150 mm) of this tape onto the soffits. Avoid hollows by using PRESSFIX. Fold EXTOSEAL ENCORS onto the front side and adhere it to ADHERO. Stretch the tape sufficiently in the corners and adhere in place in a manner free of tension. Smooth adhesive joints firmly with PRESSFIX.

14 - SEAL WINDOW FRAME



Apply window sealing tapes (e.g. CONTEGA SOLIDO SL on the inside and CONTEGA SOLIDO EXO on the outside) to the blind frame all around the window.

Place the window into the opening, fasten it and then adhere the tapes to the soffit around the window.

15 - ALTERNATIVE: FLANGE WINDOW



Insert the window, fasten it and the seal with TESCON VANA on ADHERO all around the window in a waterproof manner.

Smooth adhesive joints firmly with a PRESSFIX.

16 - FOUNDATION CONNECTION



When sealing to rough substrates such as concrete components, apply a line of the CONTEGA HF adhesive with a thickness of at least $d = 3/16"$ (5 mm).

It may be necessary to use more on very rough substrates.

Apply the membrane strip to the adhesive bed, leaving slack to allow for expansion.

Do not press the adhesive completely flat.

17 - REPAIR ABRASIONS

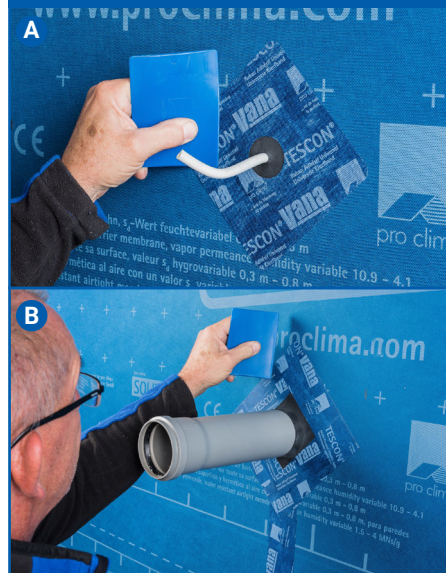


A. Adhere TESCON VANA tape in widths of 6" or 8" (150 or 200 mm) over any defects in ADHERO.

Smooth adhesive joints firmly (PRESSFIX).

B. As an alternative, defects can also be repaired by adhering a piece of ADHERO onto them. Smooth adhesive joints firmly with a PRESSFIX.

18 - PIPE/CABLE PENETRATIONS



A. Seal pipe feed-throughs with a suitable ROFLEX gasket.

Adhere the gasket to the subsurface using TESCON VANA tape. Smooth adhesive joints firmly with a PRESSFIX.

B. Alternatively, the pipe can be sealed in an interlocking pattern from top to bottom in a waterproof manner using TESCON VANA tape.

Place a KAFLEX sealing gasket over cables and adhere it to the membrane. Smooth adhesive joints firmly with a PRESSFIX.

19 - BATTENS FOR VENTILATED SIDING



It's recommended to use a vented rainscreen for optimum performance and drying capacity of all Pro Clima WRBs.

When constructing a rainscreen a min. 3/4" (20 mm) ventilated cavity is recommended for walls. For pitched roof, we recommend a 1.5" (38 mm) vented space - and install vertical battens directly over membrane, to assure drainage and venting.

For vertical siding/metal roofing, add horizontal battens on top of vertical battens to secure your siding/roofing to.

20 - RAFTER/JOIST/BEAM CONNECTIONS



Seal angular penetrations using TESCO PROTECT tape.

Smooth adhesive joints firmly with a PRESSFIX.

21 - NAIL SEALING



If brackets or similar parts are to be attached to the wall, use EXTENSEAL ENCORS for nail sealing.