

475 Installation Instructions: SOLITEX MENTO PLUS

Reinforced, airtight, 4-ply, vapor open, weather resistive barrier and roof underlayment.

BEFORE WE BEGIN

Please note:

Assemblies that are protected at the exterior by Pro Clima SOLITEX MENTO PLUS also benefit from robust interior vapor control (INTELLO PLUS), depending on climate zone. Please make sure to consult with an architect and comply with our current recommendations and building science for your specific project or application.

Substrate:

Check studs/framing for nails, splinters, and unnecessary protrusions - this prevents punctures and damage to the membrane. Ensure the substrates are dry, clean, and free of dust, silicones, adhesives, and grease. Remove loose materials and sweep prior to installation.

Equipment:

Staple gun (if pneumatic, set compressor at appropriate pressure, so staples set flush with membrane), T50 staples (5/16" (8mm) legs with 3/8" (10mm) crown), tape measure, utility knife, caulk gun, marker, straight edge, brush, rag, ladder/scaffold.

Always follow site and construction safety procedures.

For Exposed Sites (high rise/coastal areas):

To support SOLITEX MENTO against force from high air/wind pressures take the follow pre-cautions:

- use heavy duty T50 staples with 3/8" legs (10mm)
- space staples 1" apart - cover with TESCON VANA or TESCON NAIDECK
- service cavity battens should be located at 16" centers (400mm)



SOLITEX MENTO PLUS

Reinforced, airtight, 4-ply, vapor open, weather resistive barrier and roof underlayment. This highly durable membrane is designed to replacing sheathing, and can be used as netting for dense-packing insulation. Great protection for vented facades and roofs under construction, excellent durability for prefab panels.



TESCON VANA

All-around interior and exterior vapor open (8 perms) air sealing for permanent airtight taped bonding of membranes, plywood, OSB, concrete, and a variety of airtight substrates. TESCON VANA is available in: 2 3/8" (60 mm), 3" (75 mm), 4" (100 mm), 6" (150 mm), and 8" (200 mm).



PRESSFIX

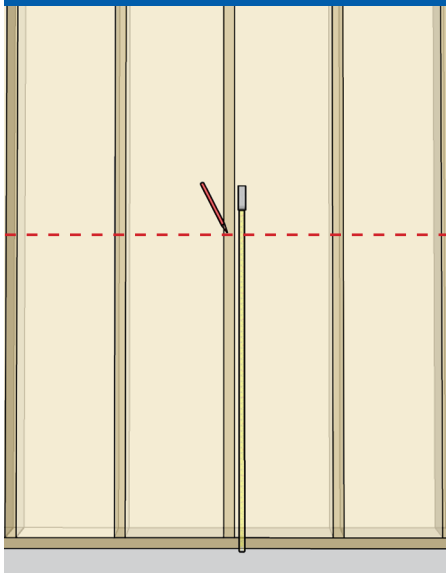
Tape application tool made from flexible plastic for uniform pressing of pressure activated adhesive tapes to substrates. Saves your hands and fingers when pressurizing long length of TESCON VANA.



CONTEGA SOLIDO EXO

Vapor open, waterproof, exterior air sealing fleece-backed tape with additional full-surface adhesive that negates the need for a primer on solid substrates (concrete/brick/CMU). Use for exterior window and door, air sealing and weather protection to foundations.

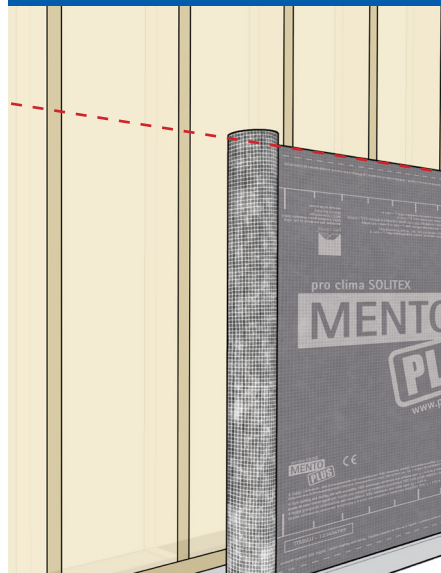
1 - MARK AT 55"



Mark studs at a distance of 55" (1400mm) minimum from the foundation edge.

These marks will assure and guide the level application of the first row of SOLITEX membrane.

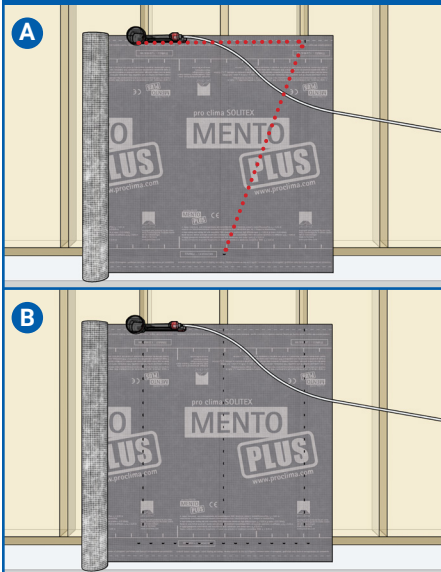
2 - UNROLL AND STAPLE THE MEMBRANE



Unroll the SOLITEX membrane and align the upper edge with your marks. The writing on the SOLITEX should face to the exterior.

Double check the overlap onto the foundation below, assuring proper lapping for assured drainage.

3 - STAPLING TO STUDS

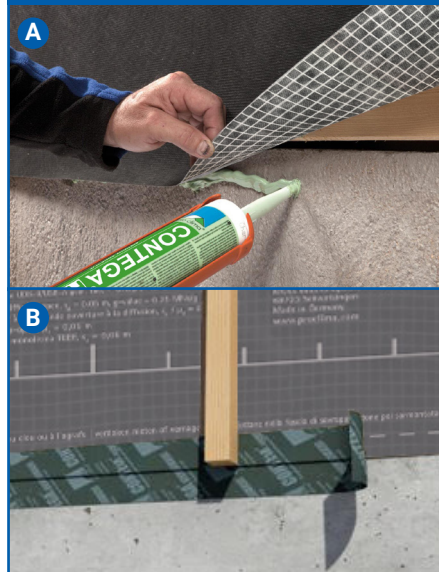


A. Attach membrane above dotted line with 2 staples. Pull the membrane taut and secure at a stud 48-60" (1200-1500mm) over. Pull down membrane to sill plate halfway between studs in a triangle and staple at center point.

B. Continue to staple parallel with stud to all studs 2" (48mm) or less o.c. Staple to sill and top plates as well. This assures membrane is securely held to structure during insulation installation.

In areas that won't be covered by battens, use TESCON tapes to waterproof staples attachments.

4 - FOUNDATION CONNECTION



A. Use CONTEGA HF or MULTIBOND to connect to foundations. Prepare substrate with TESCON PRIMER RP. Apply a 1/4" (6mm) wide bead (wider on rough surfaces). Press membrane into bead, with room for expansion/contraction of structure. Do not press adhesive completely flat. Adhesive fully cures in 48 hours - avoid exposure to wind during this period or use MULTIBOND/method B

B. CONTEGA SOLIDO EXO tape can be used to form instant bond without the need for primer to most brick/concrete.

5 - OVERLAP THE MEMBRANES



After the first layer is applied begin the second row. Use the printed markings as a guide and shiplap the WRB by 6" (150 mm). Staple along the upper edge of this layer just as with the first layer in step 3.

Plan vertical membrane seams to land on studs, so they can be fully pressurized - avoid vertical seams in corners.

Provide proper shiplapped connections when transitioning from walls to roofs.

6 - TAPE THE OVERLAPS

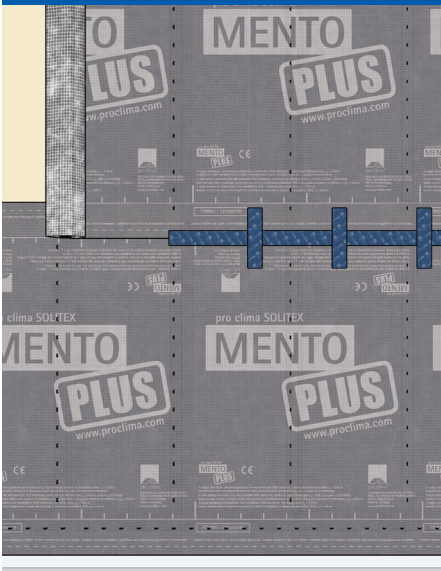


Use TESCON VANA to create waterproof and airtight seals if SOLITEX MENTO overlaps.

Dotted lines on membrane guide the placement of tapes over joints. Tape and membrane should be free of wrinkles, permanent stress and tension and be made on clean, dry surfaces.

PRESSFIX tool is recommended to apply pressure to activate adhesion of the TESCON VANA. It allows for fast and reliable pressurization of the tape and relieves your fingers.

7 - STITCH TAPING



Tape joints should be supported with a batten over the tape or in this case reinforced with perpendicular pieces of tape, spaced less than 12" (300 mm) apart. This is known as Stitch taping

8 - RAFTER/JOIST/BAM CONNECTIONS

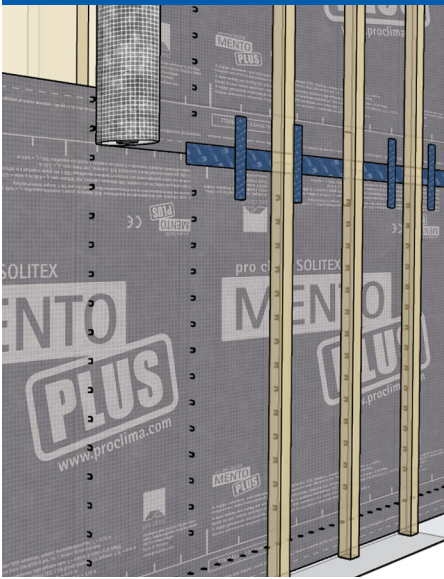


Waterproof and air sealed connections to beams, can be made with TESCON PROFIL tape. Cut the tape 2" (50 mm) longer than the beam dimensions.

To ensure proper shiplapping of tape. Tape in order:
 1. bottom
 2. right & left sides
 3. top.

Cut the 1" (25 mm) overhang of tape at a 45 degree angle. Fold tape ends around the beam and shiplap by next piece of tape for a good and durable seal.

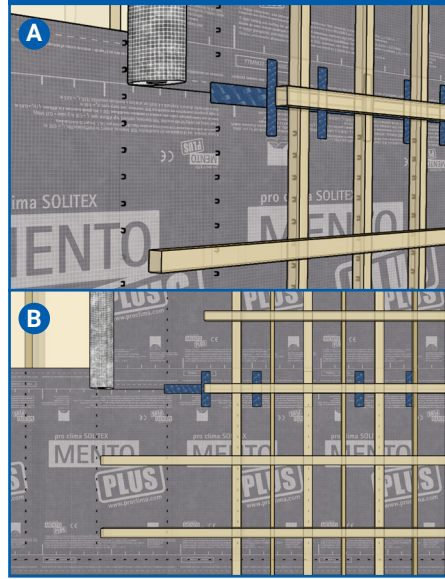
9 - VENTILATED HORIZONTAL SIDING



Apply 2x battens (38mm) over studs to clamp WRB in place. Make sure that SOLITEX MENTO does not touch siding or is punctured by nails/screws of siding.

For walls with studs >16" o.c. use horizontal battens first - 20" o.c. followed by vertical battens. See our details here

10 - VENTILATED VERTICAL SIDING

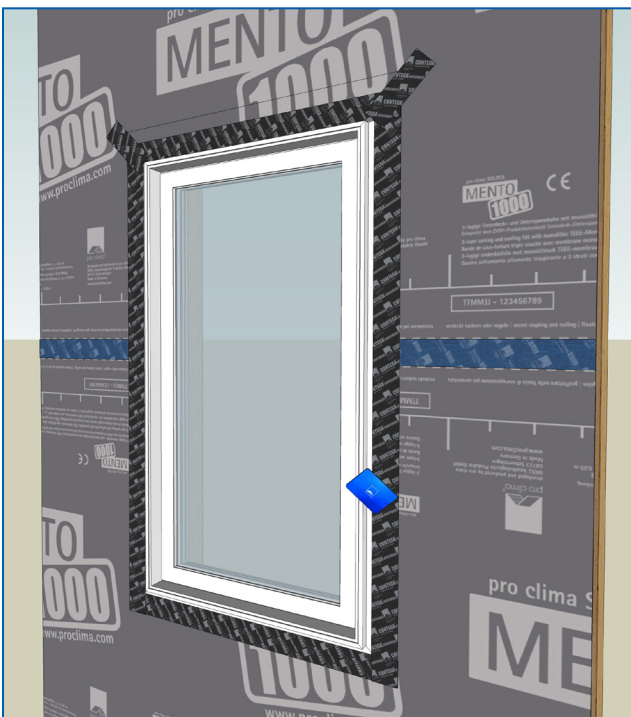


A. If studs are 16" (406 mm) O.C. install 1.5" (38 mm) thick battens to create a ventilated cavity and attach siding. If >16" (406 mm) O.C. install horizontal battens at max. spacing of 20" (508 mm) O.C. Apply vertical battens on these and attach siding. Assure siding nails/screws don't damage SOLITEX membrane behind.

B. Alternatively, If the studs behind the SOLITEX MENTO membrane are spaced >16" (406mm) O.C. a flying batten is required to prevent the WRB from touching the siding after dense-packing the insulation.

Find other relevant installation guides visit foursevenfive.com / foursevenfive.ca

FLANGE WINDOW INSTALLATION



ROOF UNDERLAYMENT INSTALLATION

