

475 Installation Instructions: SOLITEX MENTO 1000 and FRONTA QUATTRO

Essential weather resistive barriers from Pro Clima. Actively vapor open, airtight, and waterproof.

BEFORE WE BEGIN

Substrate:

Check studs/sheathing for nails, splinters, and unnecessary protrusions - this prevents punctures and damage to the membrane. Remove loose materials, debris and dust that may act as impediments to installation.

Equipment:

PRESSFIX, pneumatic stapler or staple gun, ladder or scaffold, rust resistant T50 staples (min. $\frac{3}{8}$ " (10 mm) crown, $\frac{5}{16}$ " (8 mm) legs), tape measure, utility knife, caulk gun, pencil, straight edge, and cutting board (plywood sheet).

Stapling:

Set pneumatic stapler at pressure that sets staples flush, but does cause puncturing of the membrane. Use a minimum amount of staples to secure membrane in place, until battens are installed to clamp membrane to the structure. could rust or cause leaks if left exposed. Staples to be place in areas that will be covered by membrane overlaps or taped with TESCON VANA.

Always follow site and construction safety procedures.



ROFLEX / KAFLEX

These EPDM gaskets create quick, flush, adjustable, and durable air sealing for wires (KAFLEX) and pipes (ROFLEX). Available in a range of sizes that seal round penetrations securely from $\frac{1}{4}$ " (6 mm) to $\frac{3}{4}$ " (220 mm).



SOLITEX MENTO 1000

3-layer air tight, vapor-permeable house wrap that is a robust weather resistive barrier (WRB). It has an actively vapor open, monolithic layer of TEEE film that is extremely waterproof and outperforms perforated/micro-porous WRBs, both, in outward drying potential, as well as airtightness.



FRONTA QUATTRO

FRONTA QUATTRO is a black membrane with black print, for invisible WRB and dark shadow lines behind open joint cladding. This extremely UV resistant 3-layer WRB consists of a robust PP cover, an airtight, waterproof TEEE actively vapor open layer and a protective fleece.



TESCON VANA

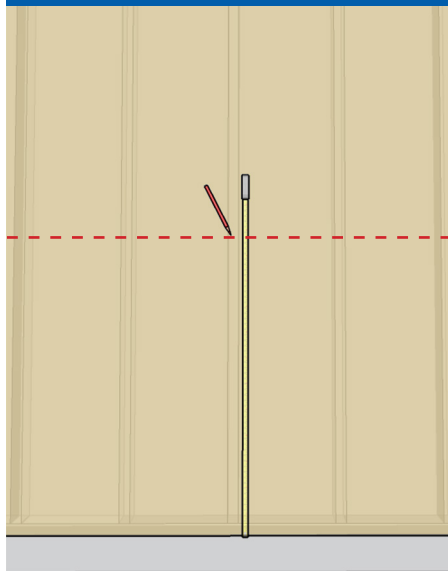
All-around interior and exterior vapor open (8 perms) air sealing for permanent airtight taped bonding of membranes, plywood, OSB, concrete, and a variety of airtight substrates. TESCON VANA is available in: $2\frac{3}{8}$ " (60 mm), 3" (75 mm), 4" (100 mm), 6" (150 mm), and 8" (200 mm).



TESCON INVIS

Black airtight tape for airsealing and waterproofing membrane overlaps and sheathing joints. Forms invisible weather resistive barrier behind open joint rainscreens when used with black membrane FRONTA QUATTRO.

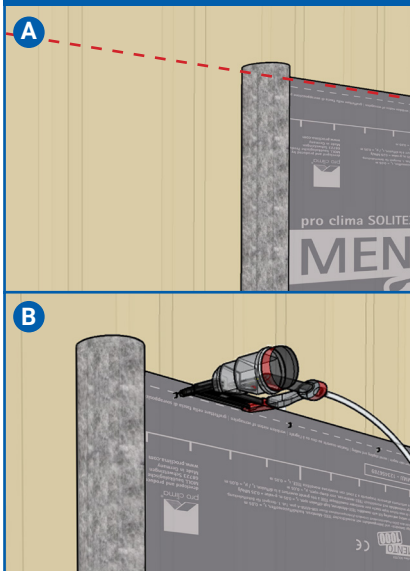
1 - MARK AT 55"



Mark sheathing at a distance of 53-55" (1345mm -1400mm) from the foundation edge.

These marks will assure and guide the level application of the rest row of SOLITEX membrane.

2 - UNROLL AND STAPLE THE MEMBRANE



A. Unroll the SOLITEX membrane and align the upper edge with your marks. The writing on the SOLITEX should face to the exterior. Double check that the overlap over the foundation is sufficient to provide proper drainage.

B. Staple about $1\frac{1}{2}$ " (38 mm) from the upper edge of the membrane. Pull the membrane taut and staple at upper edge every 1-2 ft (300 mm - 610 mm). Do not staple in areas where water will collect. When you need to staple the WRB in areas without shiplap or if it won't be covered by battens, use TESCON tapes to waterproof WRB punctures.

3 - OVERLAP THE MEMBRANES



After the first layer is applied begin the second row. Use the printed markings as a guide and shi lap the WRB by 6" (150 mm).

Staple along the upper edge of this layer just as with the first layer in step 3.

Plan for vertical membrane seams to land on flat surfaces that are easily and securely taped (not on corners).

Provide proper ship-lapped connections when transitioning from walls to roofs.

4 - TAPE THE OVERLAPS

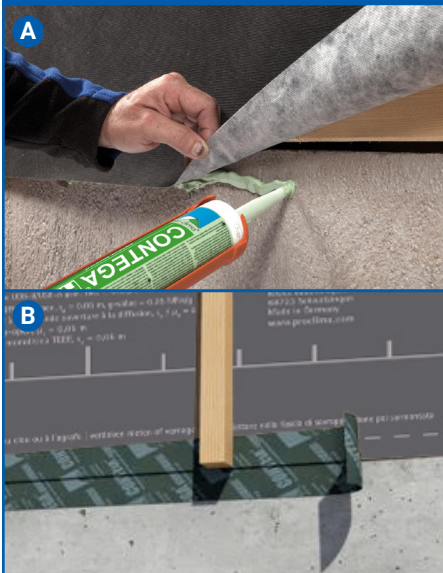


Tape all membrane seams. Use TESCON VANA for SOLITEX MENTO 1000 or TESCON INVIS for FRONTA QUATTRO.

Lines on membrane will help you center the tape over the joint. Tape overlaps should be free of tension, stress or wrinkles.

To assure sufficient pressure is applied to activate adhesive and to relieve your hands: use the PRESSFIX tool to make application and pressurisation of the tape fast and reliable.

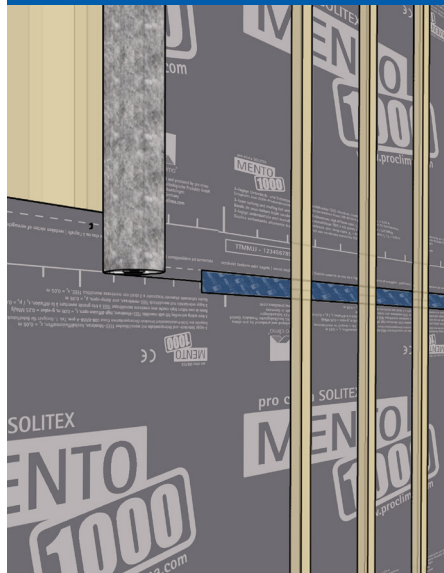
5 - FOUNDATION CONNECTION



A. Use CONTEGA HF to connect to concrete foundation, or other rough surfaces. Make sure substrate is stable or use TESCON PRIMER RP. Apply a 1/4" (6mm) wide bead (wider on rough surfaces). Press the membrane into bead, with room for expansion/contraction of structure. Do not press adhesive completely flat. Let cure for 48 hrs.

B. CONTEGA SOLIDO EXO tape may be used to form instant bond, without a need for primer, to most brick/concrete.

6 - BATTENS FOR VENTILATED SIDING



Install rainscreen battens to secure SOLITEX membrane as soon as possible to secure membrane in place. Do not leave membrane exposed to high winds without rainscreen battens installed. When constructing a rainscreen a min. 3/4" (20 mm) ventilated cavity is recommended.

Install vertical battens on top of membrane. For vertical siding, add horizontal battens on top of the vertical battens.

Make sure that your siding screws/nails do not puncture the SOLITEX membrane when being installed.

7 - RAFTER/JOIST/BEAM CONNECTIONS



Waterproof and air sealed connections to beams, can be made with TESCON PROFIL tape. Cut the tape 2" (50 mm) longer than the beam dimensions.

To ensure proper shiplapping of tape. Tape in order:
1. bottom
2. right & left sides
3. top.

Cut the 1" (25 mm) overhang of tape at a 45 angle. Fold tape ends around the beam and shi lap by next piece of tape for a good and durable seal.

8 - OPEN JOINT CLADDING



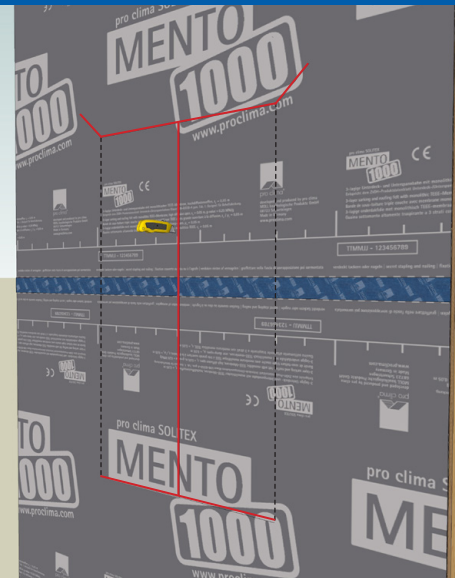
FRONTA QUATTRO is rated for UV exposure behind open joints.

Gaps between siding are limited to 3/4" (20 mm), facade can be 25% open and minimum 3/4" (20 mm) venting is required.

The cladding can be horizontal or vertical.

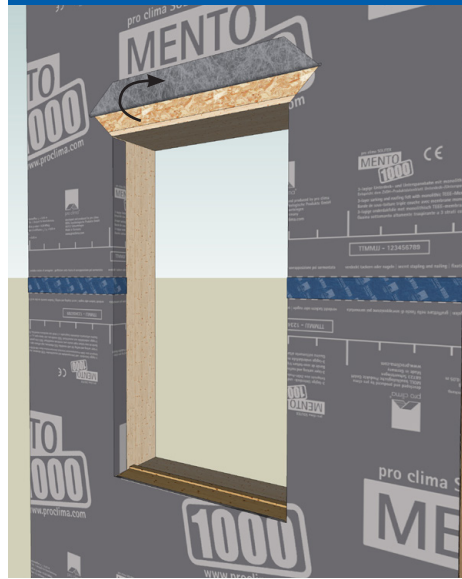
The completely black membrane and TESCON INVIS tape will make the WRB disappear behind open joint cladding.

9 - CUT WINDOW OPENING IN WRB



Cut along the top of the rough opening. Cut from the top corners of the RO at 45° angles up and away from the center. Cut down the center to the bottom of the RO, and then cut along the bottom edge of the RO.

10 - FIT MEMBRANE AROUND OPENING

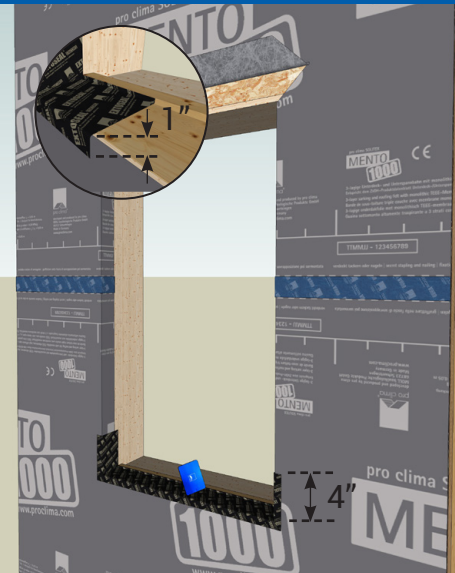


Fold up upper part of membrane and temporarily hold in place with masking tape. This is so it can be installed over the header flange of the window later.

Fold back the other two edges of the membrane into the rough opening and secure by stapling.

To ensure positive drainage of the sill/prevent water intrusion, add a back dam or slope sill at the bottom of the RO.

11 - SILL TAPE



Install EXTONSEAL ENCORS on window sill, extending it up each side a minimum of 4" (100 mm). Use PRESSFIX to accurately press into corners.

For back dams: The narrow release strip on ENCORS can be used to first adhere the tape to the back dam and then into the field.

For sloped sills: Apply ENCORS to the back of the sloped sill - sloped sill should extend at least to the inside face of the window.

The ENCORS should overlap the vertical face of the WRB approximately 1" (25mm). Trim back ENCORS with aid of a cutting block and press down and stretch around both corners.

12 - INSTALL WINDOW



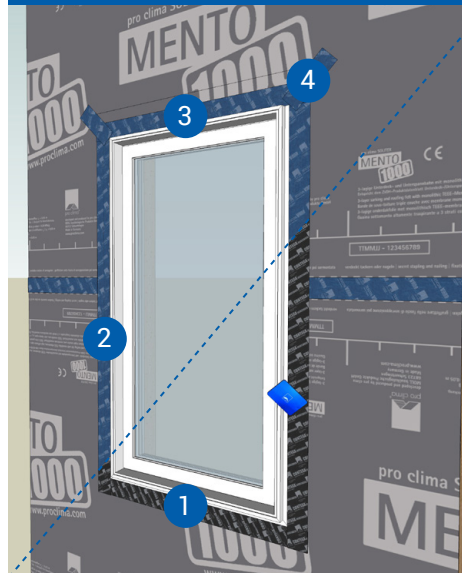
Install the flanged window and fasten to structure per manufacturer's instructions.

13 - MEMBRANE AT TOP FLANGE



Unfold the membrane and run it over the top flange.

14 - FLANGE TAPE



- (1) Use 2 3/8" (60mm) TESCON VANA or CONTEGA SOLIDO EXO tape to seal the bottom flange to the membrane. Press firmly with a PRESSFIX tool (typ.)
- (2) Tape the side flanges to the membrane.
- (3) Tape the membrane to the top flange.
- (4) Tape the diagonal cuts in the membrane above the window head.

Note: make sure taping is done from bottom to top - so all tape joints are properly shiplapped.

Find other relevant installation guides visit
foursevenfive.com / foursevenfive.ca

FLANGE WINDOW INSTALLATION



ROOF UNDERLAYMENT INSTALLATION

