

# 475 Installation Instructions: GUTEX MULTITHERM

Water resistant wood fiberboard insulation that doubles as a weather resistive barrier.

## PLEASE NOTE:

### Substrate:

Inspect studs/sheathing for nails, splinters, and unnecessary protrusions. Remove loose materials, debris and dust that may act as impediments to installation. Ensure adequate water and vapor proofing measures have been taken prior to installation. Taking these precautions will prevent damage to the boards.

### Equipment:

- Drill
- Ladder or scaffold
- Mechanical fasteners
- Temporary insulation cap fasteners - screw and wide insulation disk (temporary) or thermally broken insulation cap fasteners (permanent)
- Tape measure
- Pencil
- Straight edge
- Saw to cut MULTITHERM

### Fastening:

Use a minimum amount of screws with washers or thermally broken insulation caps to secure boards in place, until battens are installed that clamp boards in place permanently. **Always follow site and construction safety procedures.**



### GUTEX MULTITHERM

Moisture resistant wood fiberboard insulation and weather resistive barrier in one, for exterior walls under rain screens. Can also be used as pitched roof insulation (min. thickness 2 3/8" / 60 mm) when protected with a Pro Clima exterior membrane.



### VISCONN

Liquid-applied air barrier for robust connections, pitched windows sills and other detailing. VISCONN can be brushed, rolled or sprayed on as a liquid film and forms a seamless, elastic, air and vapor variable membrane once dry.



### SOLITEX MENTO 1000/3000/5000

3-layer air tight, vapor-permeable house wrap that is a robust weather resistive barrier (WRB). It has an actively vapor open, monolithic layer of TEEE film that is extremely waterproof and outperforms perforated/micro-porous WRBs, both, in outward drying potential, as well as airtightness.



### TESCON VANA 150

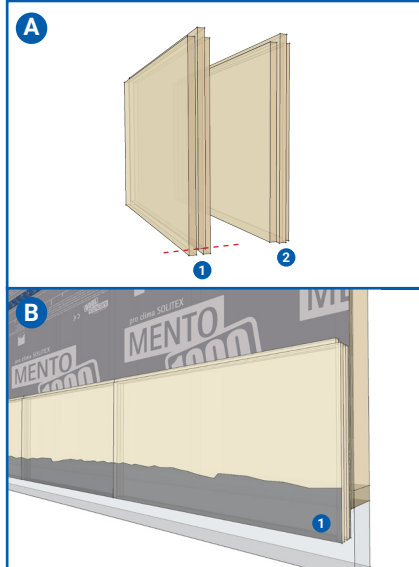
All-around interior and exterior vapor open (8 perms) air sealing for permanent airtight taped bonding of membranes, plywood, OSB, concrete, and a variety of airtight substrates. TESCON VANA is available in: 2 3/8" (60 mm), 3" (75 mm), 4" (100 mm), 6" (150 mm), and 8" (200 mm).



### TESCON PRIMER RP

Prepare the wood, OSB, plywood, fiberboard, brick, concrete, substrates, at roofs, walls and floors, for adhesion of Pro Clima Tapes and the adhesives CONTEGA HF of MULTIBOND, by applying TESCON PRIMER RP.

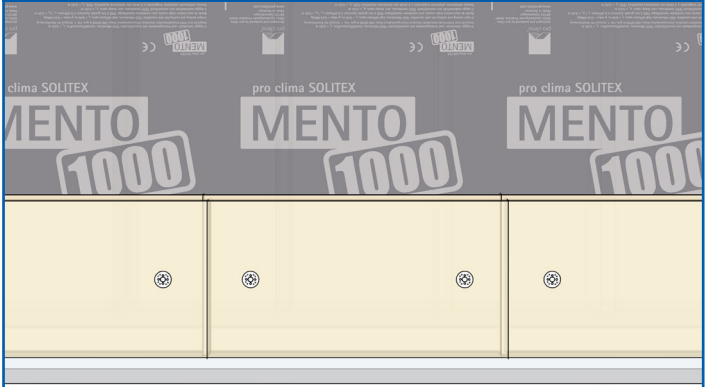
## 1 - CUT OUT GROOVE/LINE UP FIRST LAYER



A - Cut off the bottom groove of the board (1) to create a level surface (2). Use a laser level, chalk, or pencil to mark a line on the substrate. The board must be installed at a minimum of 6" (150 mm) above grade.

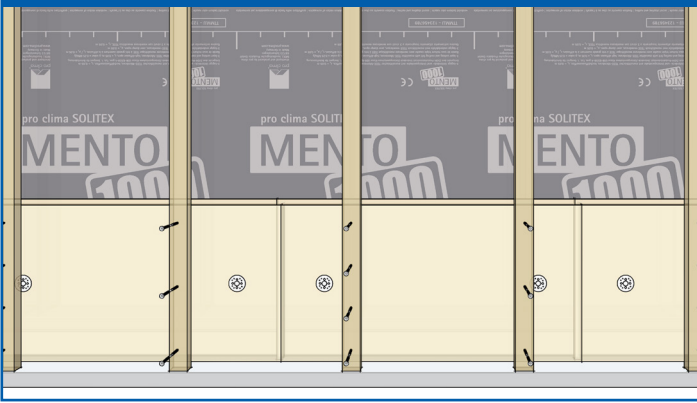
B - If between 6-12" (150 mm-300 mm) above grade, for splashback protection, apply (1) VISCONN liquid applied membrane to 12" (300 mm) above grade minimum, or (2) SOLITEX MENTO 1000 membrane to the first horizontal tongue and groove joint above.

## 2 - TEMPORARILY FASTEN FIRST COURSE



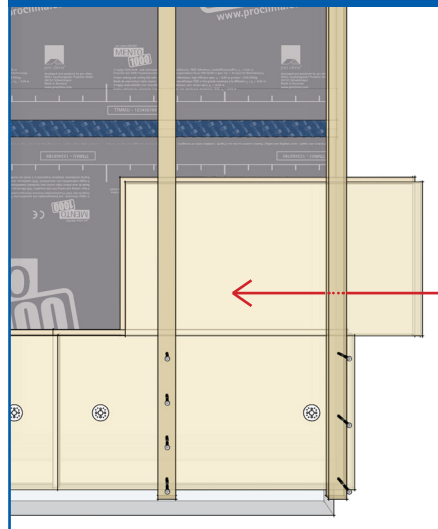
Apply the first group of boards making sure the board tongue and grooves are tightly fitted. Apply so that the GUTEX name and branding text is facing outwards. Secure boards in place with screws and insulation disks - install disks flush with face of board to avoid interference with battens. Alternatively a 2x can be used as temp. starting ledge as well.

### 3- APPLY STRAPPING



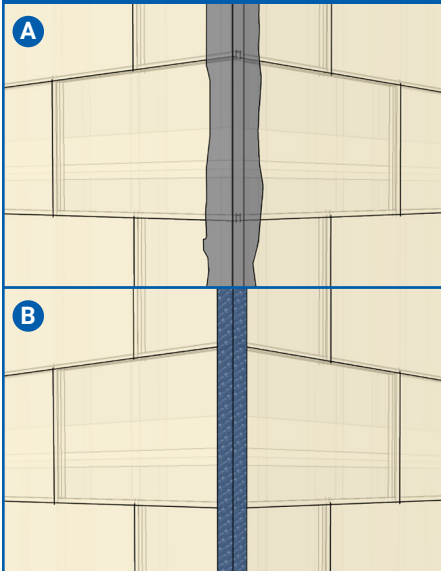
Mark the vertical centers for strapping. Use 1x4 or 2x lumber for strapping. Use a level to ensure even application. It is recommended to apply at least 7 fasteners per board through the strapping back to the structural stud. (See 'Fasteners' section at the end of this page).

### 4 - SLIDE BOARDS BEHIND STRAPPING



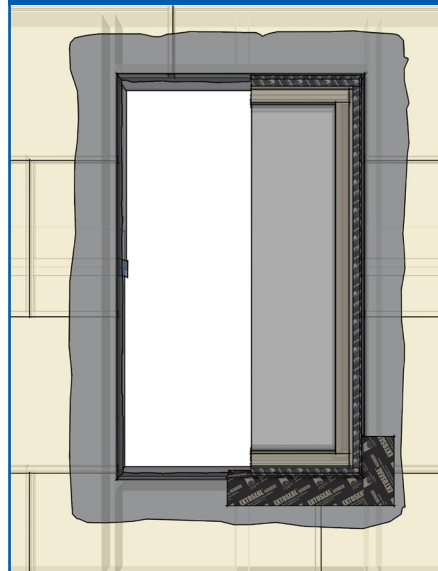
Slide the next set of boards behind the strapping, making sure the tongue and grooves are tightly fitted. Stagger the vertical joints from row-to-row by a minimum of 12" (300 mm).

### 5 - WEATHER PROTECT BUTT JOINTS



Apply a minimum of 2 coats of (A) VISCONN liquid applied membrane, or (B) TESCON VANA 150 with PRIMER RP, to all butt joints at internal and external corners.

### 6 - WINDOWS



Cut boards to allow for the opening of the window. Stagger vertical joint from the line of the window buck by a minimum of 12" (300mm). Apply a minimum of 2 coats of VISCONN liquid applied membrane or 1 layer of TESCON PRIMER RP to window head, jamb and sill to act as priming layer. Apply EXTONSEAL ENCORS tape to flash the window sill and 4" (100 mm) up the jamb. Once the window has been installed the window should be taped using either TESCON VANA, CONTEGA SOLIDO EXO or a combination of both.

### FASTNER:

Gutex MULTITHERM must be mechanically attached to structural wooden frame members using metal fasteners and vertical strapping. Adhesives, foams, glues or caulks are not considered suitable for a permanent attachment. The design of fastened connections should be completed by a relevant and qualified design professional. **Note: This guideline in no way supersedes that of a design professional.**

The fastener chosen should be:

- Appropriate for the substrate (wood or dual thread screw)
- Appropriate to withstand live, dead, shear, pull out and other loads.

Where applicable, consideration should also be given to seismic and wind-driven rain loads, in accordance with relevant building codes.

- Numerous and sufficiently sized to stop detachment and tearing under anticipated pressures
- Suitable for exterior application

Fastener specifications and connection details should be designed by a relevant and qualified design professional to withstand all the before mentioned (but not limited to) design loads. Qualified designers can vary type, number, and embedded depth, of fasteners, to meet specific requirements.

475 recommends a minimum 1.5" (38 mm) embedded depth, (Note: designers may vary this amount).

475 suggests a minimum of 7 mechanically attached insulation fasteners per board. Designers can change the number of fasteners to meet specific conditions and design requirements (including dead, live and other loads). Include an additional 2 fasteners at 60 degrees per batten to resist shear.

### LIMITATION

Gutex MULTITHERM wood insulation boards are suitable for mechanical attachment using a number of fasteners and fastening systems. Mechanically attached fastening systems are subject to various loads including dead load, wind load and seismic load; all of which vary based on location and time.

**WARNING:** Failure to include safety factors or adequately design for applied loads can result in failure of mechanical attachment. The determination of the specific design requirements and safety factors regarding a fastener system is the sole responsibility of the installer and/or end user. 475 assumes no responsibility whatsoever for any failure of insulation attachment or related fastening systems.

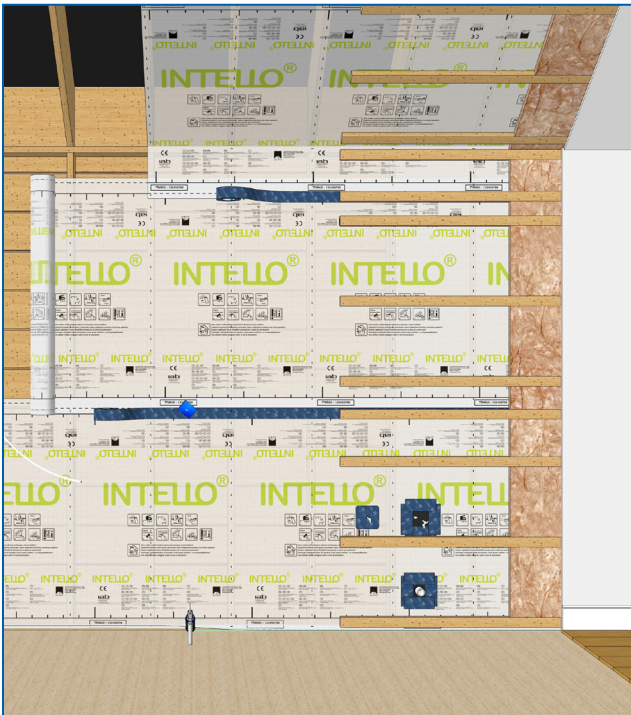
## DISCLAIMER AND LIMITATION OF LIABILITY:

The statements and data contained in this document are for general information purposes ONLY. They are NOT specific technical recommendations as to any particular design or application and the ultimate determination as to product suitability is the sole responsibility of the installer or end user. Although the information contained herein, including 475 product descriptions, is believed to be correct at the time of publication, accuracy cannot be guaranteed and results may vary depending on the particular design and/or application.

475 fully reserves the right to make product specification changes, without notice or obligation, and to modify or discontinue any of its products at any time. In no event, shall 475 be liable for any direct, indirect, or consequential damages of any kind arising from information contained in this bulletin, including, but not limited to, claims for loss of profits, business interruption, or damages to business reputation. This limitation of liability shall apply to all claims whether those claims are based in contract, tort, or any legal cause of action.

Find other relevant installation guides visit  
[foursevenfive.com](http://foursevenfive.com) / [foursevenfive.ca](http://foursevenfive.ca)

### INTELLO INSTALLATION



### ROOF UNDERLAYMENT INSTALLATION

