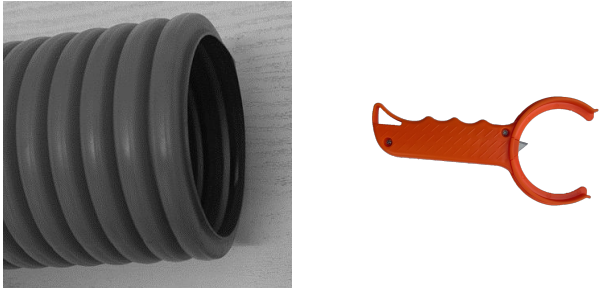


475 Installation Instructions: BRINK HRV/ERV 3" Interior duct

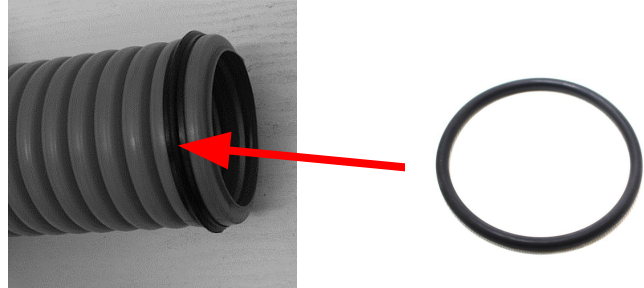


1- Trim to length



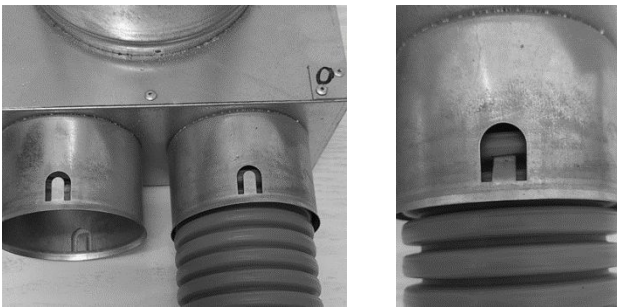
Cut duct to size cleanly with provided duct cutter or utility knife.

2- Install o-rings



Pull the o-ring over the duct to place it in the first corrugation of the semi rigid duct. Use soap or silicone spray, if needed, to make installation easier.

3- Connection to register boxes



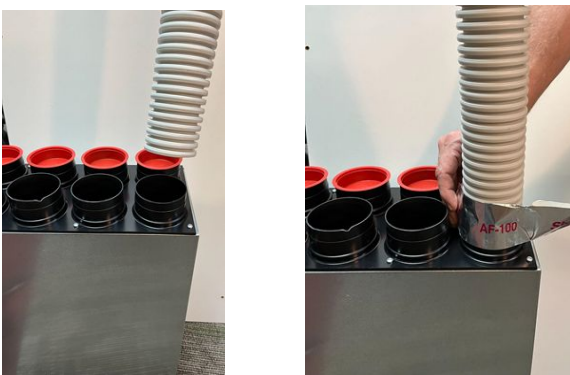
Insert the end of the duct into the collar of the register box. Bend the tabs of the collar carefully so the duct is secured - but not punctured. Use soap or silicone spray if necessary.

4- Seal connections



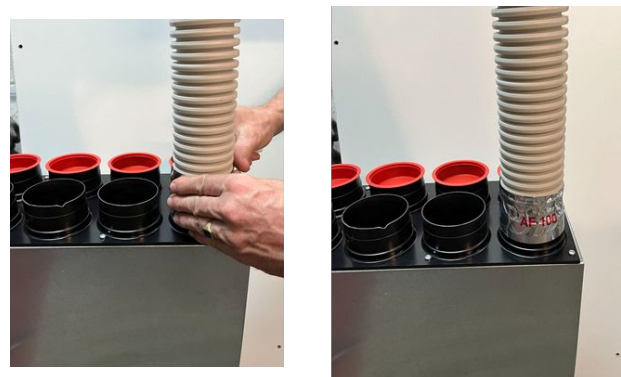
Clean the outside of sleeve and duct. Tape the duct to collar to create a secure airtight connection.

5- Connection to the manifolds



Insert the end of the duct into the collar of the manifold. No o-ring necessary.

6- Seal connections



Seal the collar to duct pipe with tape to create a secure airtight connection.