

475 Installation Instructions: ADHERO VISTO on CLT & Mass Timber Construction

Pro Clima ADHERO VISTO can provide temporary protection for CLT and mass timber panels or wood sheathing during construction. Timber elements can be protected from water and avoid staining when measures described in these instructions are followed.

ADHERO VISTO combines extremely high water resistance with the benefits of a fully adhered WRB/air barrier. It offers the ultimate weathertightness during construction to flat mass timber panels.

Substrate:

To install Pro Clima ADHERO VISTO, ensure that the printed side is facing up and adhere it firmly to a solid, structurally stable, and clean substrate. After applying the membrane, use a broom, roller, or PRESSFIX XL to pressurize it, achieving watertight and airtight seals. It's essential to lay the membranes without folds or creases and ensure correct pressurization on properly prepared substrates to achieve the desired results.

When connecting the membrane to CMU, masonry, or concrete, use TESCON PRIMER RP or VISCONN. In cases where you are uncertain about the stability of the substrate, perform an adhesion test to verify that the bonding is reliable. For rough substrates, consider using CONTEGA HF or MULTIBOND, as they offer the best airsealing and connections, ensuring a secure installation.

Application:

Overlaps of at least 6" (150mm) are recommended as well as additional sealing methods with CONTEGA HF at interrupting walls. Assure drainage from the ADHERO VISTO waterproofing floor is also executed before rain occurs and avoid standing water by removing it as soon as possible after a rain event.

ADHERO VISTO can be exposed for a period of **up to 3 months**.

Always follow site and construction safety procedures.



ADHERO VISTO

ADHERO VISTO is a transparent, self-adhering membrane that provides durable temporary weather protection during construction for Mass Timber assemblies.



PRESSFIX XL

Membrane application tool for use with ADHERO self-adhering WRB. PRESSFIX-XL is a necessity for all ADHERO applications - especially at overlaps - brooms and rollers can be used in "the field".



TESCON VANA 100

All-around airtight, vapor-open, SOLID acrylic adhesive tape. For interior or exterior air-sealing and waterproofing of membrane overlaps and sheathing joints.



CONTEGA HF

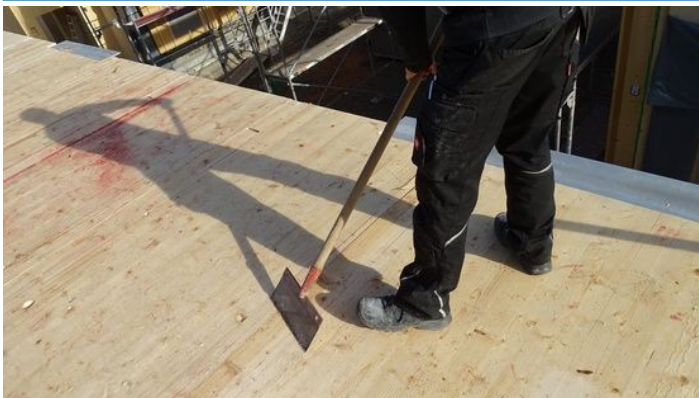
Acrylic adhesive for sealing and waterproofing difficult seams at vertical walls that interrupt the CLT floor plane.



TESCON PRIMER RP

TESCON PRIMER RP prepares substrates for greater adhesion. Used to prepare substrates such as CMU, concrete and brick for the adhesion of Pro Clima tapes and adhesives.

1 - INSPECT SUBSTRATE



Clean dirt, debris and remove any protruding elements (splinters, nails, screws, etc) that can damage the membrane during installation.

2 - REMOVE DUST AND DIRT



Make sure the substrate is clean. Use compressed air or a blower to clear dirt and debris. Remove any oil, silicone or grease that would prevent proper adhesion of the membrane.

3A - CREATE A GUIDE



Mark a line on the CLT to position the first ADHERO VISTO edge to be applied.

3B - CREATE A GUIDE



Align ADHERO VISTO with the marking. Plan the installation such that there is continuous adhesion with a flat surface.

4 - POSITION THE MEMBRANE



Roll out the membrane along the guideline and gradually adhere it to the substrate.

5 - REMOVE ADHESION STRIP



Remove the 10" (250mm) adhesive strip. Pressure apply the membrane firmly into place using the PRESSFIX XL application tool, broom, or roller.

6 - INSTALL REMAINING MEMBRANES



Remove the remaining release paper. Press the membrane firmly into place using a PRESSFIX XL application tool, broom, or roller.

7 - PRESSURE APPLY THE MEMBRANE



Press the membrane firmly into place using a PRESSFIX XL application tool, broom, or roller.

8 - ALTERNATIVE ADHESION METHOD



As an alternative method, the membranes can be taped to one another using TESCO VANA 100. Position the tape centrally and gradually stick it in place with no folds or creases. Ensure a minimum of 2" (100mm) adhesion to both membrane substrates. Pressure apply using the PRESSFIX XL.

9- JOINTS TO CONCRETE WALLS



Pretreatment with TESCO PRIMER RP is necessary for CMU, masonry, and concrete. When in doubt, verify adhesion with an adhesion test. For very rough substrates and for joining vertical elements/shafts, it is recommended to use CONTEGA HF and TESCO VANA to ensure complete waterproof connections. For vertical interruptions (walls, elevator shafts), the minimum vertical height should be 4-6" (100-150 mm).

10 - PROTECTION AGAINST SEEPAGE



Any gaps or defects are to be covered with TESCO VANA in a waterproof manner or, filled with CONTEGA HF.

11 - AVOID STANDING WATER



Install a temporary floor drain system that prevents the build up of standing water or have other means to remove pooling water from the membrane (sweeping, mopping etc). The short-term accumulation height should not exceed 1 3/16" (30 mm). Standing water should be removed within 24 hours. Do not leave the membrane permanently wet/submerged.

12 - PROTECTION OF PROTECTION



Inform all jobsite subcontractors of VISTO's purpose. Instruct them to protect the membrane in high-use areas using plywood or mats. Replace the membrane for significant damage.