

G. F. Händel

Drei Märsche

Marsch aus Floridante

Marsch aus Rinaldo

Marsch aus Joshua

bearbeitet für Schulorchester

von

Christoph Heidsiek

Partituren und Einzelstimmen



Notenedition GanzOhr
Christoph Heidsiek
Postweg 9 D-28870 Ottersberg

www.ganzohr-musik.de

Marsch aus Fl oridante

Georg Friedrich Händel
arr. C. Heidsiek

Cembalo

C G C am C dm G C C

Sopranflöte 1

Sopranflöte 2

Querflöte

B-Klarinette 1

B-Klarinette 2

B-Trompete 1

B-Trompete 2

Tenorhorn in B

Metallophon

Violine 1

Violine 2

Viola

Violoncello 1

Violoncello 2

Bassxylophon

Marsch aus Flöridante

Georg Friedrich Händel
arr. C. Heidsiek

8 C G C am C dm G C C

Sopranflöte 1

Sopranflöte 2

Querflöte

⑤ 8 C am dm G7 C F G C G

Soprfl. 1

Soprfl. 2

Querfl.

⑨ 8 G G C G G C F C G7 C

Soprfl. 1

Soprfl. 2

Querfl.

⑬ 8 am C am F G7 C G C

Soprfl. 1

Soprfl. 2

Querfl.

Marsch aus Fl oridante

Georg Friedrich Händel
arr. C. Heidsiek

Altsax 1 in Es

Altsax in Es 2

Altsax in Es 3

5

Sax 1

Sax 2

Sax 3

9

Sax 1

Sax 2

Sax 3

13

Sax 1

Sax 2

Sax 3

Marsch aus Flöridante

Georg Friedrich Händel
arr. C. Heidsiek

B-Trompete 1

B-Trompete 2

Horn in F

This system contains the first four measures of the march. It features three staves: B-Trompete 1, B-Trompete 2, and Horn in F. The key signature is one sharp (F#) and the time signature is common time (C). The music consists of eighth and quarter notes.

⑤

Tromp. 1

Tromp. 2

Horn

This system contains measures 5 through 8. It features three staves: Tromp. 1, Tromp. 2, and Horn. The key signature is one sharp (F#) and the time signature is common time (C). The music consists of quarter and eighth notes.

⑨

Tromp. 1

Tromp. 2

Horn

This system contains measures 9 through 12. It features three staves: Tromp. 1, Tromp. 2, and Horn. The key signature is one sharp (F#) and the time signature is common time (C). The music consists of quarter and eighth notes.

⑬

Tromp. 1

Tromp. 2

Horn

This system contains measures 13 through 16. It features three staves: Tromp. 1, Tromp. 2, and Horn. The key signature is one sharp (F#) and the time signature is common time (C). The music consists of quarter and eighth notes.

Marsch aus Flöridante

Georg Friedrich Händel
arr. C. Heidsiek

Violine 1

Violine 2

Viola

This system contains the first four measures of the piece. Violine 1 and Violine 2 play a rhythmic pattern of eighth notes, while the Viola provides a bass line with quarter and eighth notes. A large grey watermark is visible across the right side of the system.

Viol. 1

Viol. 2

Vla.

⑤

This system contains measures 5 through 8. The Viol. 1 part features a melodic line with eighth notes, while Viol. 2 and Vla. continue the accompaniment. A circled measure number '5' is at the beginning. A large grey watermark is visible across the right side of the system.

Viol. 1

Viol. 2

Vla.

⑨

This system contains measures 9 through 12. The Viol. 1 part has a melodic line with eighth notes, while Viol. 2 and Vla. continue the accompaniment. A circled measure number '9' is at the beginning. A large grey watermark is visible across the right side of the system.

Viol. 1

Viol. 2

Vla.

⑬

This system contains measures 13 through 16. The Viol. 1 part has a melodic line with eighth notes, while Viol. 2 and Vla. continue the accompaniment. A circled measure number '13' is at the beginning. A large grey watermark is visible across the left side of the system.

Marsch aus Rinal do

Georg Friedrich Händel (1685-1759)
arr. C. Heidsiek

Cembalo

Sopranflöte 1

Sopranflöte 2

Querflöte

B-Klarinette 1

B-Klarinette 2

B-Trompete 1

B-Trompete 2

Tenorhorn in B

Metallophon

Violine 1

Violine 2

Viola

Violoncello 1

Violoncello 2

Bassxylophon

C C C C C C G

⑤ C am dm7 G C G C D7 G

Cemb.

Soprfl. 1

Soprfl. 2

Querfl.

B-Klar. 1

B-Klar. 2

Tromp. 1

Tromp. 2

Tenorh.

Metallo.

Viol. 1

Viol. 2

Vla.

Vcl. 1

Vcl. 2

Bass-X.

Marsch aus Rinal do

G. F. Händel
Arrangement: C. Heidsiek

Klavier

The first system of the piano arrangement, consisting of two staves (treble and bass clef). The music begins with a treble clef and a key signature of one flat. The melody in the treble clef starts with a quarter note G4, followed by eighth notes A4 and B4, then a quarter note C5. The bass clef accompaniment starts with a quarter note G3, followed by quarter notes F3 and E3, then a quarter note D3. The system concludes with a repeat sign.

⑤

The second system of the piano arrangement, starting at measure 5. The treble clef continues the melody with eighth notes C5, B4, A4, and G4. The bass clef accompaniment features a steady eighth-note pattern: G3, F3, E3, D3, C3, B2, A2, G2. The system ends with a repeat sign.

⑨

The third system of the piano arrangement, starting at measure 9. The treble clef melody includes a quarter note G4, followed by eighth notes A4 and B4, then a quarter note C5. The bass clef accompaniment continues with quarter notes G3, F3, E3, and D3. The system concludes with a repeat sign.

⑬

The fourth system of the piano arrangement, starting at measure 13. The treble clef melody consists of quarter notes G4, A4, B4, and C5. The bass clef accompaniment features a steady eighth-note pattern: G3, F3, E3, D3, C3, B2, A2, G2. The system ends with a repeat sign.

⑰

The fifth system of the piano arrangement, starting at measure 17. The treble clef melody includes a quarter note G4, followed by eighth notes A4 and B4, then a quarter note C5. The bass clef accompaniment continues with quarter notes G3, F3, E3, and D3. The system concludes with a repeat sign.

⑳

The sixth system of the piano arrangement, starting at measure 21. The treble clef melody consists of quarter notes G4, A4, B4, and C5. The bass clef accompaniment features a steady eighth-note pattern: G3, F3, E3, D3, C3, B2, A2, G2. The system ends with a repeat sign.

Marsch aus Rinal do

Georg Friedrich Händel (1685-1759)
arr. C. Heidsiek

B-Klarinette 1

B-Klarinette 2

5

B-Klar. 1

B-Klar. 2

9

B-Klar. 1

B-Klar. 2

14

B-Klar. 1

B-Klar. 2

19

B-Klar. 1

B-Klar. 2

Marsch aus Joshua

Georg Friedrich Händel (1685-1759)
arr. C. Heidsiek

F dm gm C F F gm C C

Cembalo

Sopranflöte 1

Sopranflöte 2

Querflöte

B-Klarinette 1

B-Klarinette 2

B-Trompete 1

B-Trompete 2

Tenorhorn in B

Glockensp.

Metallophon

Violine 1

Violine 2

Viola

Violoncello 1

Bassxylophon

⑤ C F dm G C dm G C C

Cemb.

Soprf. 1

Soprf. 2

Querfl.

B-Klar. 1

B-Klar. 2

Tromp. 1

Tromp. 2

Tenorh.

Glsp.

Metallo.

Viol. 1

Viol. 2

Vla.

Vcl. 1

Bass-X.

Marsch aus Joshua

Georg Friedrich Händel (1685-1759)
arr. C. Heidsiek

F dm gm C F F gm C C

⑤ C F dm G C dm G C C

⑩ C7 F gm C F C G C C

⑭ F F C C F gm C F B

⑱ F F B gm F gm F C F

Marsch aus Joshua

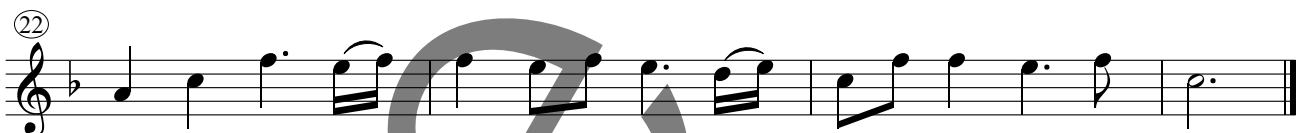
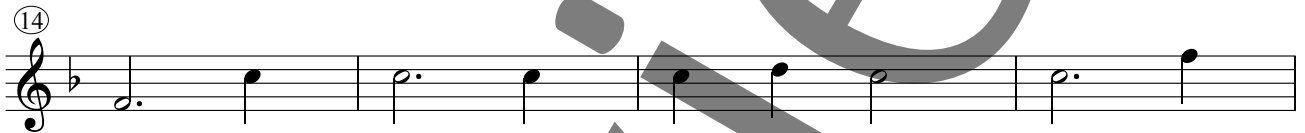
Georg Friedrich Händel (1685-1759)
arr. C. Heidsiek

The image displays a musical score for Soprano Flute 1 and 2, covering measures 8 through 22. The score is organized into six systems, each with two staves. The key signature is one flat (B-flat), and the time signature is 8/8. A large, semi-transparent watermark reading 'PREVIEW' is overlaid diagonally across the entire page. Measure numbers 8, 10, 14, 18, and 22 are indicated at the beginning of their respective systems. The notation includes various rhythmic values such as eighth and sixteenth notes, rests, and dynamic markings like 'p' (piano).

Marsch aus Joshua

Georg Friedrich Händel (1685-1759)
arr. C. Heidsiek

Querflöte



Marsch aus Joshua

Georg Friedrich Händel (1685-1759)
arr. C. Heidsiek

B-Klarinette 1

B-Klarinette 2

This system contains the first four measures of the piece. The B-Cornet 1 part (top staff) begins with a quarter note G4, followed by quarter notes A4, B4, and C5. The B-Cornet 2 part (bottom staff) starts with a quarter rest, followed by quarter notes G3, A3, B3, and C4. Both parts continue with eighth-note patterns.

B-Klar. 1

B-Klar. 2

5

This system contains measures 5 through 8. Measure 5 is marked with a circled '5'. The B-Cornet 1 part features a melodic line with eighth notes and quarter notes. The B-Cornet 2 part provides a rhythmic accompaniment with quarter notes and eighth notes.

B-Klar. 1

B-Klar. 2

10

This system contains measures 9 through 13. Measure 9 is marked with a circled '10'. The B-Cornet 1 part continues its melodic development, while the B-Cornet 2 part maintains the accompaniment.

B-Klar. 1

B-Klar. 2

14

This system contains measures 14 through 17. Measure 14 is marked with a circled '14'. The B-Cornet 1 part has a more active melodic line with eighth notes. The B-Cornet 2 part continues with a steady accompaniment.

B-Klar. 1

B-Klar. 2

18

This system contains measures 18 through 21. Measure 18 is marked with a circled '18'. The B-Cornet 1 part features a melodic line with quarter and eighth notes. The B-Cornet 2 part continues with a rhythmic accompaniment.

B-Klar. 1

B-Klar. 2

22

This system contains measures 22 through 25. Measure 22 is marked with a circled '22'. The B-Cornet 1 part has a melodic line with quarter notes and eighth notes. The B-Cornet 2 part continues with a rhythmic accompaniment.

Marsch aus Joshua

Georg Friedrich Händel (1685-1759)
arr. C. Heidsiek

Tromp. 1

Tromp. 2

Tenorh.

5

Tromp. 1

Tromp. 2

Tenorh.

10

Tromp. 1

Tromp. 2

Tenorh.

14

Tromp. 1

Tromp. 2

Tenorh.

Marsch aus Joshua

Georg Friedrich Händel (1685-1759)
arr. C. Heidsiek

Glockensp.

C' — F B — E F — C' D' E'

⑤ G' — C' F' — H' C — G A H C'

⑩ E' — A D' — G F — G'

⑭ A — G' F' — A

⑱ F A C' D' B G C — G

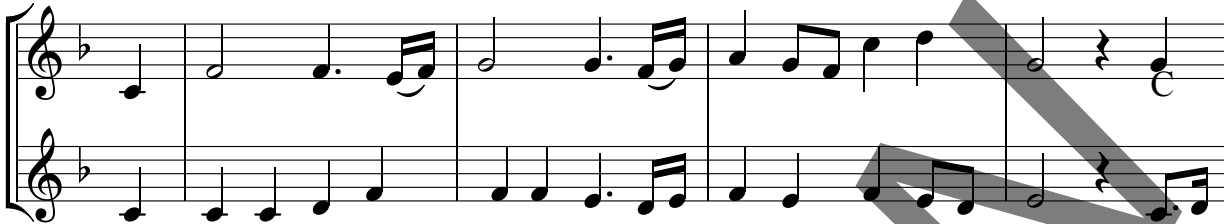
⑳ D E F G A B A — F'

Marsch aus Joshua

Georg Friedrich Händel (1685-1759)
arr. C. Heidsiek

Violine 1

Violine 2



Violine 1 and Violine 2 staves showing the first four measures of the march. The music is in G minor (one flat) and 2/4 time. The Violine 1 part features a melodic line with eighth and sixteenth notes, while the Violine 2 part provides a rhythmic accompaniment with eighth notes.

Viol. 1

Viol. 2

5



Viol. 1 and Viol. 2 staves showing measures 5-8. Measure 5 is marked with a circled '5'. The Violine 1 part continues with a melodic line, and the Violine 2 part continues with a rhythmic accompaniment. A repeat sign is present at the end of measure 8.

Viol. 1

Viol. 2

10



Viol. 1 and Viol. 2 staves showing measures 9-13. Measure 9 is marked with a circled '10'. The Violine 1 part continues with a melodic line, and the Violine 2 part continues with a rhythmic accompaniment.

Viol. 1

Viol. 2

14



Viol. 1 and Viol. 2 staves showing measures 14-17. Measure 14 is marked with a circled '14'. The Violine 1 part continues with a melodic line, and the Violine 2 part continues with a rhythmic accompaniment.

Viol. 1

Viol. 2

18

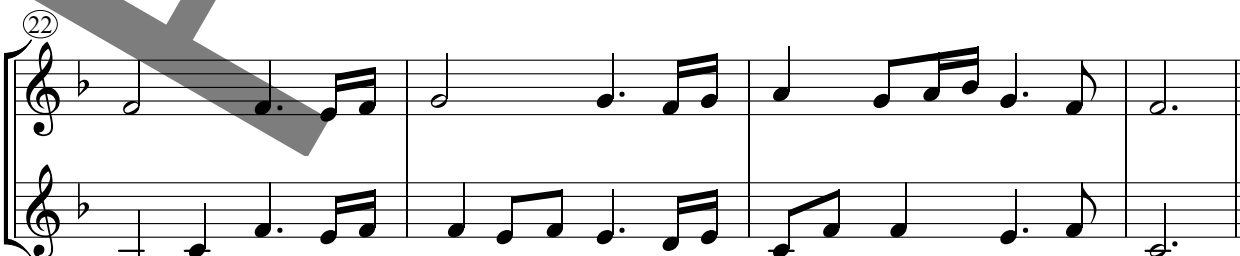


Viol. 1 and Viol. 2 staves showing measures 18-21. Measure 18 is marked with a circled '18'. The Violine 1 part continues with a melodic line, and the Violine 2 part continues with a rhythmic accompaniment.

Viol. 1

Viol. 2

22



Viol. 1 and Viol. 2 staves showing measures 22-25. Measure 22 is marked with a circled '22'. The Violine 1 part continues with a melodic line, and the Violine 2 part continues with a rhythmic accompaniment. The piece concludes with a double bar line at the end of measure 25.

Marsch aus Joshua

Georg Friedrich Händel (1685-1759)
arr. C. Heidsiek

Viola



⑤



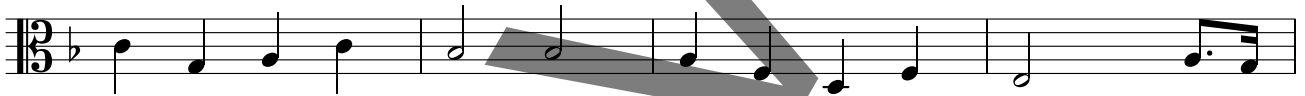
⑩



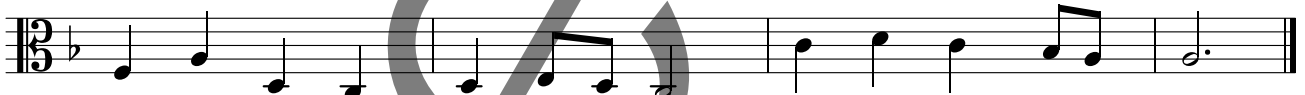
⑭



⑱



⑳



PREVIEW