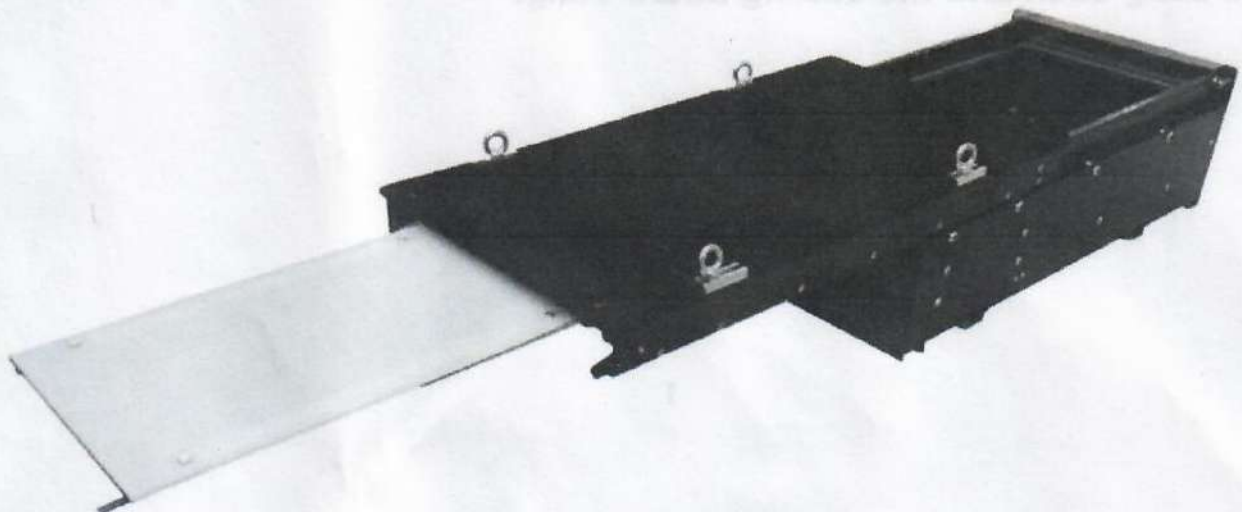




## **Overland Vehicle Systems Cargo Box Installation Instructions**

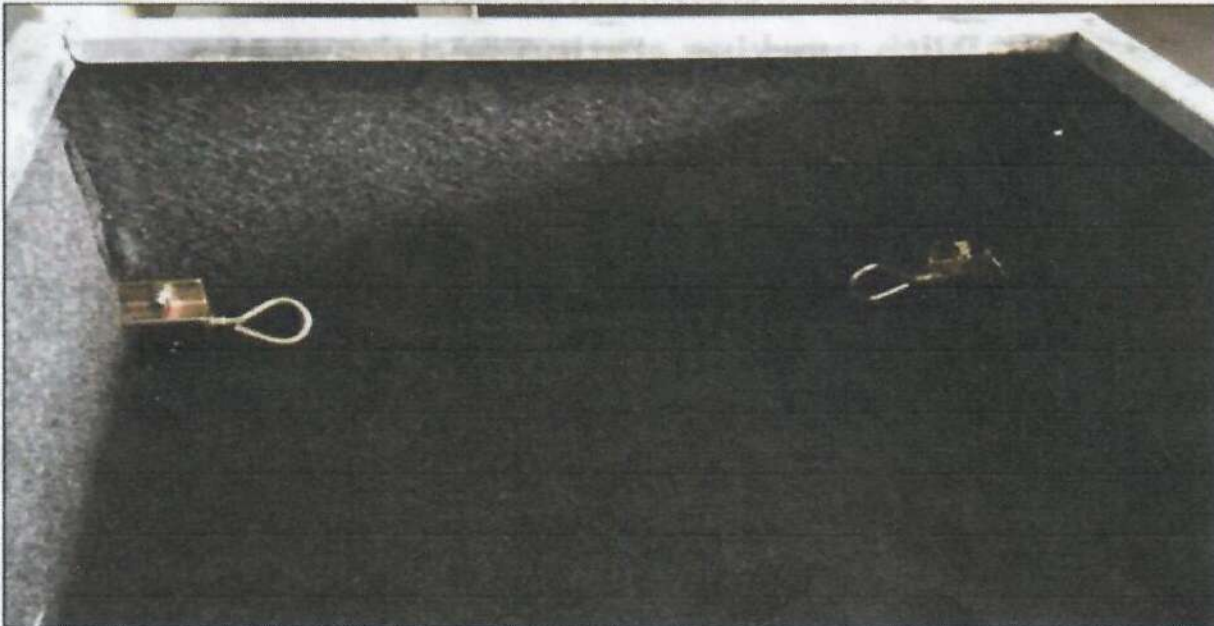
- **With working station and drawer**
- **With slide out drawer**

# **Instruction Manual**



Thank you for purchasing the 4WD Single Drawer With Slide. Before use please ensure that the bolts inside the drawer are screwed out to ensure that your drawer will stop on the bumpers in the casing.

Below is an image of the bolts in the drawer. You will need to pull the bolt back to be able to turn it anti-clockwise for it to move.



Also a reminder that the weight ratings for the drawer tub and slide are 60kg each and the cutting board 15kg.

## Part List



### Drawer Specifications

External Size: L88 x W47 x H26.5cm  
Net Weight: 30.7kg  
Top Slide Out: 55cm  
Cutting Board Slide Out: 49cm  
Drawer Pull Out: 55cm



### Mounting Kit

4 x M10 x 55mm bolts  
4 x M10 washers  
4 x M10 nylon nuts  
4 x M10 spring washers



### Tie Down Kit

4 x M8 x 12mm bolts  
(For stacking two drawers together)  
4 x tie down rings  
4 x M8 nylon washers  
4 x M8 washers

## Locating Mounting Space in Car

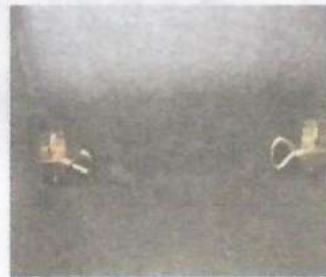
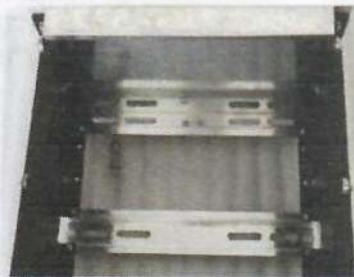
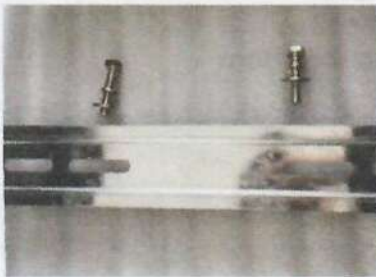


### IMPORTANT

Before installing the drawer, please check the car owner's handbook or the rear base of your vehicle for anchor point location.

If available, use the chair anchor points to bolt the drawer onto your car.

Check carefully the size between the chair mounting points and compare with the mounting rail at the bottom of the drawer. Move mounting rail to desired right position.



Use the M10 bolts, nuts and washers from mounting kit to bolt drawer. Some vehicles may require longer or shorter bolts. Please check your owner's handbook or contact your local vehicle dealer if unable to locate or no anchor points available.

To access the bottom mounting rail easily, slide out the top panel and carefully pull out the drawer tub.

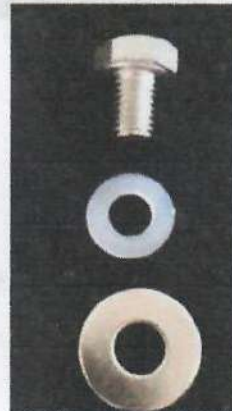
Release the two latches at rear of drawer for ease of removal. They need to be tightened if the draw comes loose or out of the casing.

### WARNING

CHECK ANCHOR POINTS REGULARLY TO ENSURE DRAWER IS SECURELY ATTACHED. DO NOT ANCHOR CHILD RESTRAINTS TO THE DRAWER.

## ***Stackable Vertical Drawer Option***

The universal design allows drawers to be stacked on top of one another. Use the M8 bolts and washers/nuts provided and follow the steps below:



## **Configurations**



5

**For any further questions, please contact  
Overland Vehicle Systems at 833.226.4863 or  
visit [www.overlandvehiclesystems.com](http://www.overlandvehiclesystems.com)**