



FRAG0711

RECIPE - 9CL

BLACK PLUM & RHUBARB IN RS1

CANDLE SHACK

DESCRIPTION

BLACK PLUM AND RHUBARB

FRAG0711

TOP NOTES - RHUBARB
HEART NOTES - PEAR, PEACH
BASE NOTES - PLUM, BLACKBERRY

INGREDIENTS FOR EACH CANDLE

1x 9cl glass jar
7.5g of Black Plum & Rhubarb Fragrance Oil
67.5g of Candle Shack Ecosystem RS1 Wax
1x CL4
1x 15mm Adhesive Wick Pad
1x WickClaw Tool for 9cl Glass

WAX

Our RS1 is a 100% natural wax blend made with rapeseed and soy oils. Developed exclusively for Candle Shack, this wax is a truly professional grade wax having been used for years by our luxury brand clients, but is easy to use by novices and seasoned chandlers alike!

VESSEL

Our Lauren 9cl Votive glass is manufactured in Italy and meets the highest standards of clarity and tolerance.

Height: 67mm

Diameter: 56mm

Internal height: 57mm

WICK

Our innovative unbleached cotton and linen blend CL Series wick. Flat wick designed to minimise afterglow and smoking while maintaining rigidity. All wicks are 110mm long with a thin paraffin wax coating for stability.

USAGE RECOMMENDATIONS

- We recommend heating RS1 to a maximum of 75°C (slowly to prevent damaging the wax).
- Add fragrance at 63°C and stir for 60 seconds.
- The mixture is ready to pour at 60°C into warmed glasses.
- If the top is uneven once set, you can flash the surface with a heat gun, or do a top up pour to get a clean finish.
- Leave the candle to cure for 2+ days for best results.

DISCLAIMER

Each report shows test results for a set of candles made by Candle Shack's R&D team for that particular recipe. The test reports are not a guarantee that all candles made to the recipe will burn in exactly the same way. Variables such as ambient temperature, air flow, or the manufacturing process can affect the burning profile of a candle, so it is recommended that candle makers conduct their own testing to ensure that they are satisfied with the performance of their product

Technical report on a test set of candles made in Candle Shack R&D department for sooting behaviour testing and fire safety testing

Date of Report: 20/09/21

Testing Period: 02/09/21 to 07/09/21

Sample Ref	CS0302C-1	No. of Samples	3
Candle Name	9cl Black Plum & Rhubarb Candle, 10% in RS1		
Description	75g Rapeseed Container Blend Fragranced Candle		
Fragrance	Black Plum & Rhubarb	Weight per candle	7.5g
Wax	Candle Shack Ecosystem RS1	Weight per candle	67.5g
Colour	White	Height	67mm
Wick Type	CL4	Top Diameter (ext)	56mm
Wick Positioning	Centred	Top Diameter (int)	51mm
Surface Defects	None	Base Diameter	50mm

TECHNICAL REPORT

Part 1: SPECIFICATION FOR SOOTING BEHAVIOUR

To evaluate the performance of a test set of candles in a controlled environment against the requirements of **BS EN 15426:2018** (Candles. Specification for sooting behaviour)

Part 2: SPECIFICATION FOR FIRE SAFETY

To evaluate the performance of a test set of candles in a controlled environment against the requirements of **BS EN 15493:2019** (Candles. Specification for fire safety)

Part 1: SPECIFICATION FOR SOOTING BEHAVIOUR

Requirement

When tested in accordance with clause 9 of EN 15426:2018, the average soot index per hour from three tests (samples) shall be less than 1.0/h

The room temperature during testing was 20±5°C

Wicks were trimmed to 5mm before lighting.

Cycles: 2 x 240 ± 5 min cycles with >60min pause between cycles)

Soot testing was performed in wire mesh cylinder Type 1 (Diameter: 230 ± 10 mm)

Sample Ref.	Total burn time t_m (h)	Hourly soot index S_{i_h}	Average soot index per hour S_{i_h}	Result
CS0302C-1.1	7.75	0.18	0.10	PASS
CS0302C-1.2	7.75	0.09		
CS0302C-1.3	7.75	0.03		

CANDLE SHACK

Candle Shack Ltd
 Unit A, West Carron Works
 Stenhouse Rd
 Carron
 Stirlingshire
 FK2 8DR

Part 2: SPECIFICATION FOR FIRE SAFETY

Test Property	Test Method	Requirements	Result
Stability	EN 15493:2019 4.1 (Visual Check)	Candle should not tip over when placed on a 10° incline plane	PASS
Secondary Ignition	EN 15493:2019 4.2 (Visual Check)	No secondary ignition shall occur for more than 10 s	PASS
Flame Height	EN 15493:2019 4.3 (Measurement)	The flame height for all candle types, except for tea lights, shall not exceed 75mm. The flame height for tea lights shall not exceed 30mm	PASS Maximum: 10 mm
Behaviour after extinguishing	EN 15493:2019 4.5.1 (Visual Check)	After extinguishing the candle shall not spontaneously re-light	PASS
	EN 15493:2019 4.5.2 (Measurement)	The wick shall not continue to glow or smoke for an average time of more than 30 s after extinguishing	PASS Average: 4 s
Container Candles	EN 15493:2019 4.6 (Visual Check)	The container shall not crack or break at any time throughout the burning test	PASS

The room temperature during testing was 20±5°C
 Wicks were trimmed to 5mm before lighting.

Candle Performance (240 ± 5 min cycles with >60min pause between cycles)

Sample Ref.	Gross Weight (g)	Total Wax Consumed (g)	*Total Burning Time (h)	Wax Consumption Rate (g/h)
CS0302C-1.1	198.1	71.0	32.4	2.19
CS0302C-1.2	198.1	70.8	32.4	2.18
CS0302C-1.3	200.1	72.1	32.4	2.22

*If a candle self-extinguishes during the final burn cycle, the time of self-extinguishing is estimated

Notes and Discussion:

CANDLE SHACK

Candle Shack Ltd
 Unit A, West Carron Works
 Stenhouse Rd
 Carron
 Stirlingshire
 FK2 8DR

CHARTS

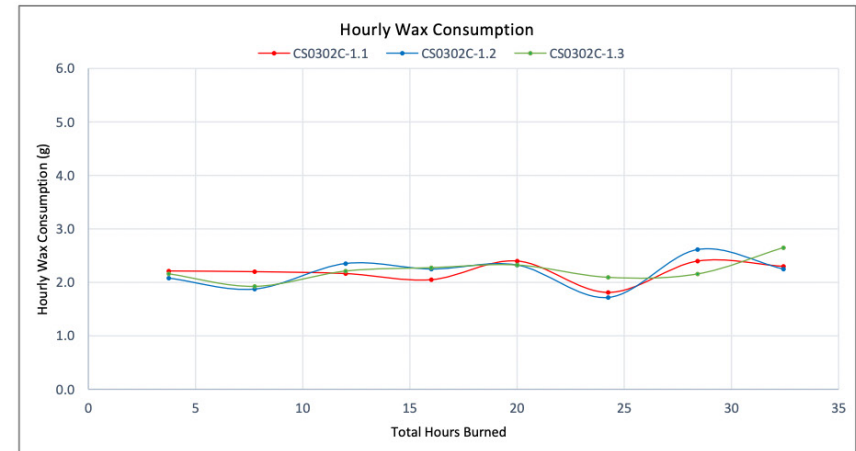
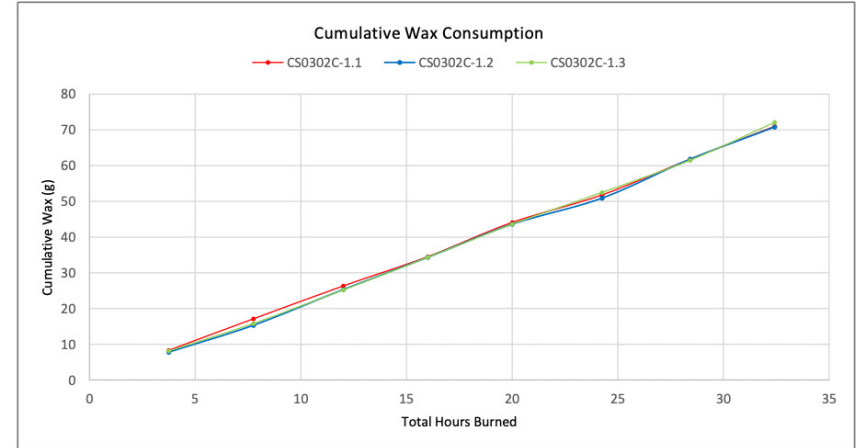
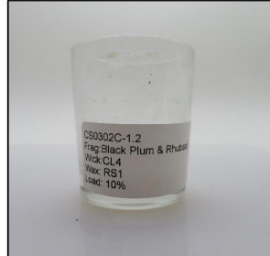


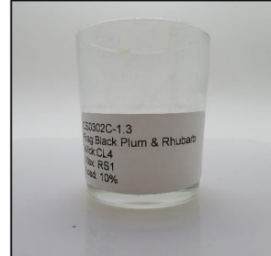
IMAGE GALLERY



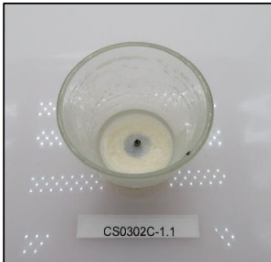
End of Burn Front- Sample 1



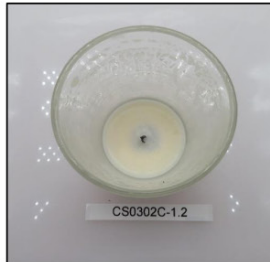
End of Burn Front- Sample 2



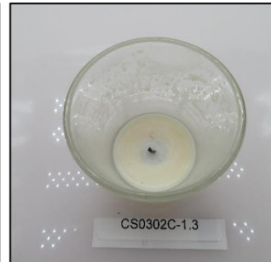
End of Burn Front- Sample 3



End of Burn Top - Sample 1



End of Burn Top - Sample 2



End of Burn Top - Sample 3

END OF REPORT

David Barn
Head of R&D