



FRAG1661

CANDLE SHACK

PEAR AND FREESIA



THIS RECIPE IS DESIGNED FOR THE NEW MOD. THE FIRST BATCH NUMBER FOR THE NEW MOD IS 176850

RECIPE - 9CL

PEAR AND FREESIA IN S41

CANDLE SHACK

DESCRIPTION

PEAR AND FREESIA

TOP NOTES - BERGAMOT,
LEMON AND PEAR

HEART NOTES - MAGNOLIA,
ORCHID, ROSE, MUGUET

BASE NOTES - MUSK, DRY
AMBER, PATCHOULI

FRAG1661

INGREDIENTS FOR EACH CANDLE

1x 9cl glass jar
5.25g of Pear and Freesia Fragrance Oil
69.75g of Golden Wax S41
1x Stabilo5
1x 15mm Adhesive Wick Pad
1x Three Jar Wick Centering Tool

WAX

Golden Wax S41 is a super soft soybean wax that retains fragrance beautifully and burns incredibly cleanly. This plant wax has a beautiful hot throw and stability while offering excellent ease of wicking. Suitable for vegans, S41 is completely devoid of GMO and synthetic additives.

VESSEL

Our Lauren 9cl Votive glass is manufactured in Italy and meets the highest standards of clarity and tolerance.

Height: 67mm

Diameter: 56mm

Internal height: 57mm

WICK

Stabilo candle wicks are one of the best and brightest wicks for home and professional scented candles alike. They are coreless, non-directional flat-braided wicks with a special paper filament woven around them. With their unique configuration, they enable consistent capillary action while ensuring a wick-trimming flame posture. All wicks are 110mm long with a thin paraffin coating for stability.

USAGE RECOMMENDATIONS

- We recommend heating S41 to 60°C to melt.
- Add the fragrance at 60°C and stir until the oil has dissolved.
- The mixture is ready to pour at around 31°C when it starts to look cloudy.
- Leave the candle to cure for at least 2 days at 20°C for the best results.

DISCLAIMER

Each report shows test results for a set of candles made by Candle Shack's R&D team for that particular recipe. The test reports are not a guarantee that all candles made to the recipe will burn in exactly the same way. Variables such as ambient temperature, air flow, or the manufacturing process can affect the burning profile of a candle, so it is recommended that candle makers conduct their own testing to ensure that they are satisfied with the performance of their product.

CANDLE SHACK

Candleshack Ltd, Unit A, West Carron Works,
Stenhouse Road, Carron, Stirlingshire, FK2 8DR

Technical report on a test set of candles made in Candle Shack R&D department for sooting
behaviour testing and fire safety testing

Date of Report: 29/03/23

Testing Period: 22/03/2023 - 29/03/2023

Sample Ref	RCP0095F-2	No. of Samples	3
Candle Name	9cl Pear & Freesia Candle, 7% in S41		
Description	75g Soy Wax Fragranced Candle		
Fragrance	Pear & Freesia Fragrance Oil	Weight per candle	5.25g
Wax	Golden Wax S41	Weight per candle	69.75g
Colour	Off White	Height	67mm
Wick Type	Stabilo5	Top Diameter (ext)	56mm
Wick Positioning	Centred	Top Diameter (int)	51mm
Surface Defects	None	Base Diameter	50mm

TECHNICAL REPORT

Part 1: SPECIFICATION FOR SOOTING BEHAVIOUR

To evaluate the performance of a test set of candles in a controlled environment against the requirements of BS EN 15426:2018 (Candles. Specification for sooting behaviour)

Part 2: SPECIFICATION FOR FIRE SAFETY

To evaluate the performance of a test set of candles in a controlled environment against the requirements of BS EN 15493:2019 (Candles. Specification for fire safety)



CANDLE SHACK

Part 1: SPECIFICATION FOR SOOTING BEHAVIOUR

Requirement

When tested in accordance with clause 9 of EN 15426:2018, the average soot index per hour from three tests (samples) shall be less than 1.0/h

The room temperature during testing was 20±5°C

Wicks were trimmed to 5mm before lighting.

Cycles: 3 x 240 ± 5 min cycles with >60min pause between cycles)

Soot testing was performed in wire mesh cylinder Type 2 (Diameter: 300 ± 10 mm)

Sample Ref.	Total burn time t_m (h)	Hourly soot index Si_h	Average soot index per hour Si_h	Result
RCP0095F-2.1	8.00	0.06	0.05	PASS
RCP0095F-2.2	8.00	0.06		
RCP0095F-2.3	8.00	0.03		



CANDLE SHACK

Part 2: SPECIFICATION FOR FIRE SAFETY

Test Property	Test Method	Test Requirements	Result
Stability	EN 15493:2019 4.1 (Visual Check)	Candle should not tip over when placed on a 10° incline plane	PASS
Secondary Ignition	EN 15493:2019 4.2 (Visual Check)	No secondary ignition shall occur for more than 10 s	PASS
Flame Height	EN 15493:2019 4.3 (Measurement)	The flame height for all candle types, except for tea lights, shall not exceed 75mm. The flame height for tea lights shall not exceed 30mm Maximum: 25 mm	PASS
Behaviour after extinguishing	EN 15493:2019 4.5.1 (Visual Check)	After extinguishing the candle shall not spontaneously re-light	PASS
	EN 15493:2019 4.5.2 (Measurement)	The wick shall not continue to glow or smoke for an average time of more than 30 s after extinguishing Average: 16 s	PASS
Container Candles	EN 15493:2019 4.6 (Visual Check)	The container shall not crack or break at any time throughout the burning test	PASS

The room temperature during testing was 20±5°C

Wicks were trimmed to 5mm before lighting.

Candle Performance (240 ± 5 min cycles with >60min pause between cycles)

Sample Ref.	Gross Weight (g)	Total Wax Consumed (g)	*Total Burning Time (h)	Wax Consumption Rate (g/h)
RCP0095F-2.1	199.3	67.0	20.0	3.35
RCP0095F-2.2	201.5	70.7	24.0	2.95
RCP0095F-2.3	200.3	66.0	20.0	3.30

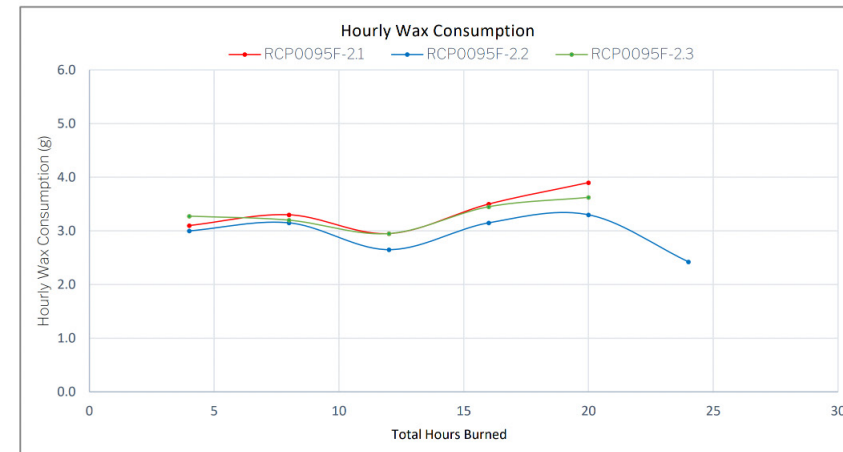
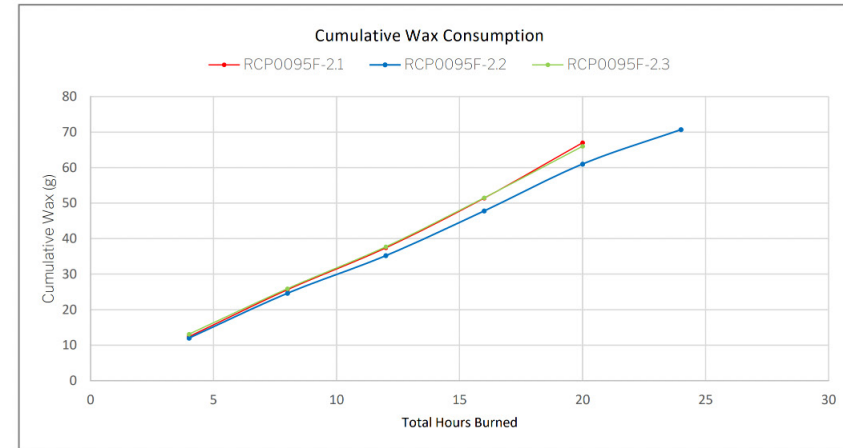
*If a candle self-extinguishes during the final burn cycle, the time of self-extinguishing is estimated.

Notes and Discussion:



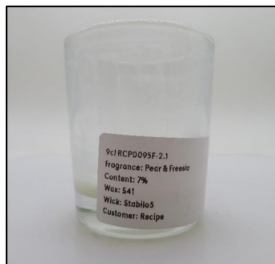
CANDLE SHACK

CHARTS

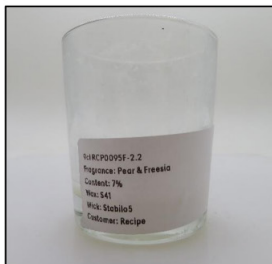


CANDLE SHACK

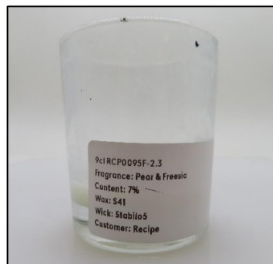
IMAGE GALLERY



End of Burn Front - Sample 1



End of Burn Front - Sample 2



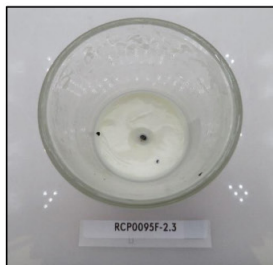
End of Burn Front - Sample 3



End of Burn Top - Sample 1



End of Burn Top - Sample 2



End of Burn Top - Sample 3

END OF REPORT

Patrycja Krajewska

Patrycja Krajewska
Laboratory Technician

