



ANCASTER
FOOD EQUIPMENT

MODEL GDM-49

REFURBISHED TRUE® GLASS DOOR MERCHANDISER

CABINET DIMENSIONS (IN):

W 54¹/₈ x D 29⁷/₈ x H 78⁵/₈

CRATED WEIGHT: 470 LBS

SHELVES: 8 Adjustable

AMPS: 10.6 HP: 1/2

NEMA CONFIG. 5-15P



CORD LENGTH: 9FT

VOLTAGE: 115/60/1

TEMP RANGE: 33°F TO 35°F
or .5°C TO 1.5°C

CERTIFICATION: NSF-7

ENERGY STAR RATED



CONTACT US FOR MORE DETAILS:

TOLL FREE 1-855-888-9644

WWW.ANCASTERFOODEQUIPMENT.COM

SALES@ANCASTERFOODEQUIPMENT.COM



ON THE

PARTS & SERVICE

FINANCING & LEASING OPTIONS AVAILABLE, ASK FOR DETAILS!



ON THE

COMPRESSOR



ANCASTER
FOOD EQUIPMENT

MODEL GDM-49

REFURBISHED TRUE® GLASS DOOR MERCHANDISER



NEW COMPRESSOR



**NEW ACRYLIC
SIGNAGE**



**NEW COSMETIC
PAINT & VINYL**



**NEW SOLENOID
VALVE &
DRIER FILTER**



VIRGIN FREON



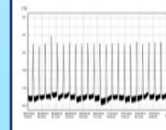
NEW LED LIGHTS



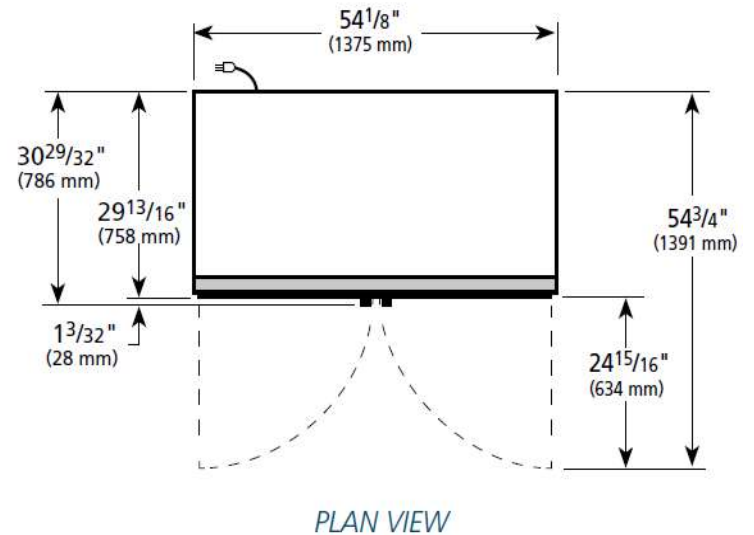
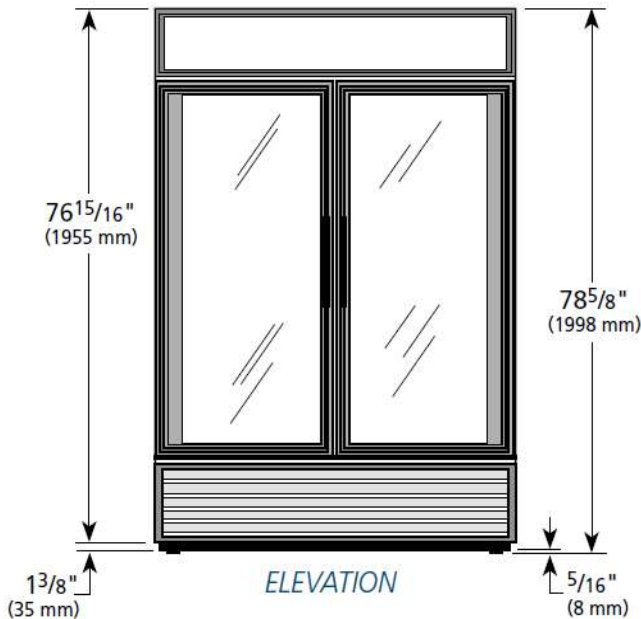
NEW CONTROLLER



**NEW TEMPERATURE
PROBES**



**EXTENSIVE
TESTING**



CONTACT US FOR MORE DETAILS:

TOLL FREE 1-855-888-9644

WWW.ANCASTERFOODEQUIPMENT.COM

SALES@ANCASTERFOODEQUIPMENT.COM



ON THE

PARTS & SERVICE

FINANCING & LEASING OPTIONS AVAILABLE, ASK FOR DETAILS!



ON THE

COMPRESSOR