

VIEW ON WEBSITE



SCAN HERE ↑

TOPAZ 4

CARPET TILES



Elegance & Comfort in Modern Living

- 4400 SHADY GREY
- 4401 FREEZER RED
- 4402 JELLO BLUE
- 4405 APPLE GREEN
- 4406 ROYAL GOLD
- 4409 ORANGE SUN





4499 MIDDLE GREY



Herringbone



4400 SHADY GREY 4405 APPLE GREEN
4401 FREEZER RED 4406 ROYAL GOLD
4402 JELLO BLUE 4409 ORANGE SUN

Herringbone





4400 SHADY GREY
4401 FREEZER RED



Ashlar



TOPAZ 4

4400 SHADY GREY
4401 FREEZER RED
4402 JELLO BLUE

4405 APPLE GREEN
4406 ROYAL GOLD
4409 ORANGE SUN

TRAFFIC 2

2405 APPLE GREEN
2409 ORANGE SUN



4402 JELLO BLUE

Ashlar 



4402 JELLO BLUE
4405 APPLES GREEN
4499 MIDDLE GREY



4400 SHADY GREY
4406 ROYAL GOLD



- 100% Souldion Dyed Nylon •
- Stain-Resistant •
- Anti-Static •
- Flame-Retardant •

In plank size 25cm x 100cm

TOPAZ 4

SWATCHES

4400 SHADY GREY



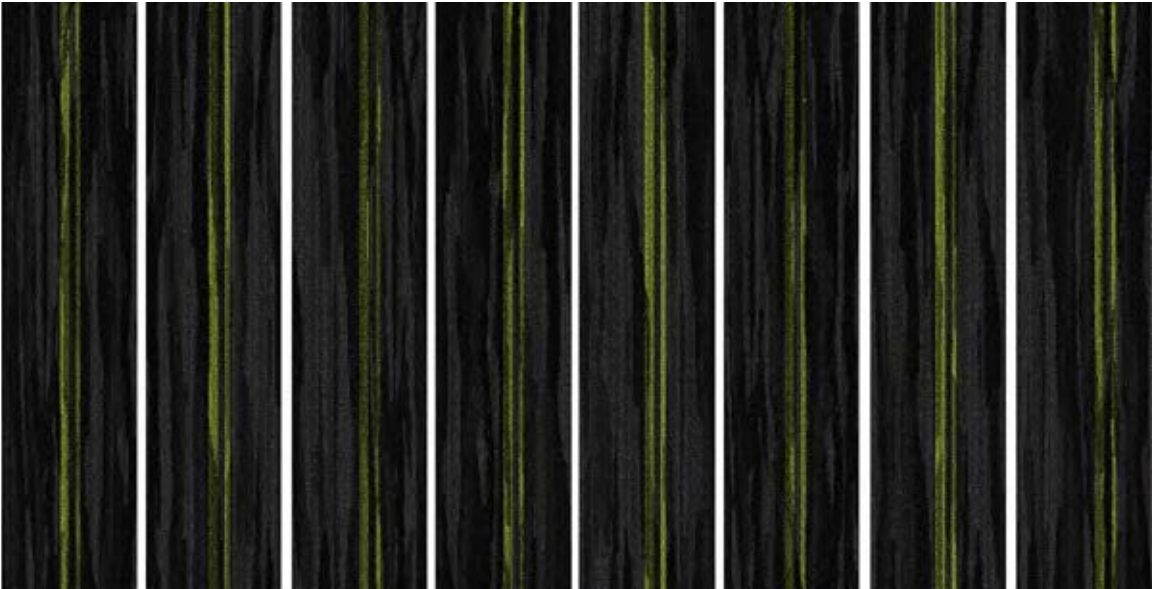
4401 FREEZER RED



4402 JELLO BLUE



4405 APPLE GREEN



TOPAZ 4

SWATCHES

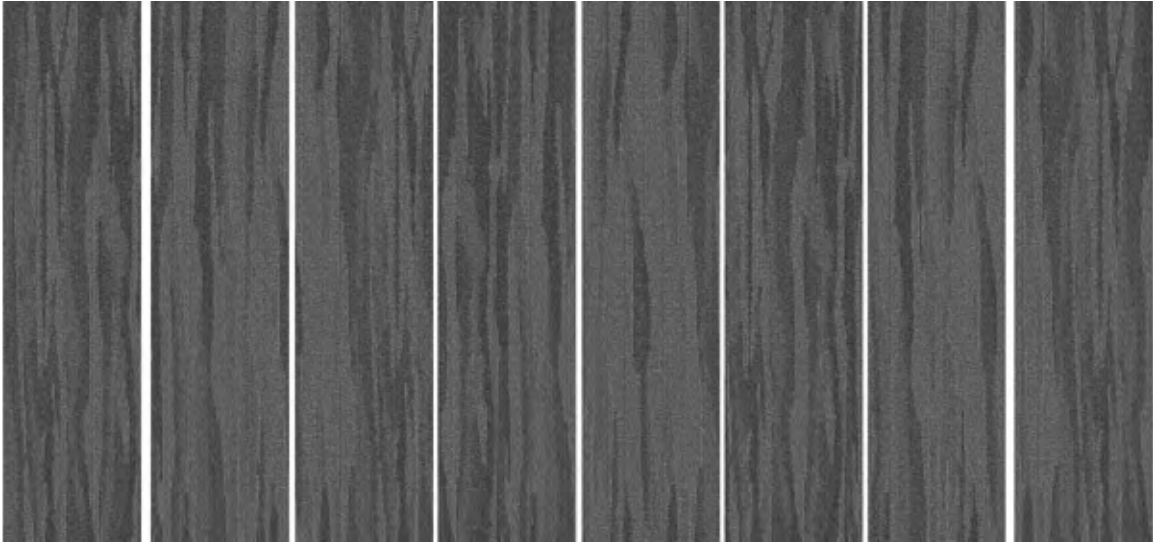
4406 ROYAL GOLD



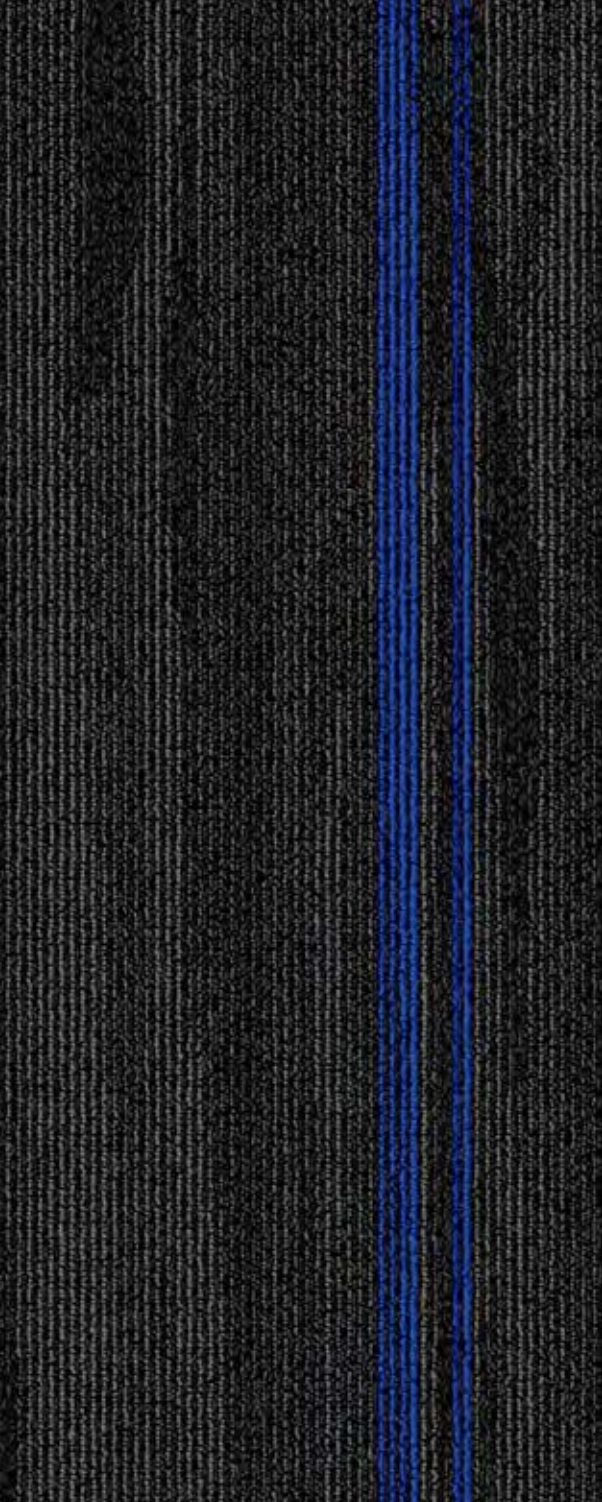
4409 ORANGE SUN



4499 MIDDLE GREY



4400 SHADY GREY
4499 MIDDLE GREY



TOPAZ 4 Specifications

Construction	1/12" Multi-Level Loop Pattern
Yarn Composition	100% Solution Dyed Nylon
Tufted Pile Weight	Ca. 678 g/m ² (20 oz/yd ²) (+/- 10%)
Total Weight	Ca. 3500 g/m ² (103 oz/yd ²) (+/- 10%)
Pile Height	Ca. 3 mm (+/- 0.5 mm)
Total Height	Ca. 5 mm (+/- 0.5 mm)
Density (APYD)	4,572 ozs/yd ³
Tuft Density	204,600 stitches/m ²
Stitch Rate	11 per inch
Backing	EcoAce Backing
Plank Size	25 cm x 100 cm
Packing	20 pcs per box (5 m ²)

Performance (as tested by ITTS Inc. USA)

Stain Resistance	9 (AATCC-175-2003)
Static Control	Pass - Max. 4 kV (AATCC-134-1996)
Tuft Bind	Pass - 6.8 lbs (ASTM-D-1335)
Dimensional Stability	Pass - Max. 2% change (AACHEN)
Indoor Air Quality (V.O.C.)	Pass - No VOC Detected (ASTM-D5116-10)
Impact Sound Insulation	ΔLw: 28 dB (ISO 10140)
Sound Absorption	αw = 0,25 (H) (ISO 354) αs 0.00 0.05 0.30 0.20 2.00 4.00
Flammability	
- Radiant Panel	Pass - Class I (ASTM-E-648-06)
- Pill Test	Pass - 8 (ASTM-D-2859-96)
- Smoke Density	Pass - Max. 450 (ASTM-E-662-06)
Colourfastness	
- to light	Excellent - 5 (AATCC-16E)
- to wet & dry crocking	Excellent - 5 (AATCC-165)
- to ozone	3 (AATCC-129)

Warranties

15 Year Carpet Wear Warranty
Lifetime Anti-shock Carpet Warranty

Ideal for Heavy Commercial Use.

The subfloor should be dry, smooth, flat, dust-free and resistant to compression and load-bearing. The seams may remain visible to the eye and this should be accepted as an inherent characteristic of carpet tiles. Due to dye lot variations, actual colour may vary slightly from the samples. Chair pads are recommended to prevent premature wear of carpet.

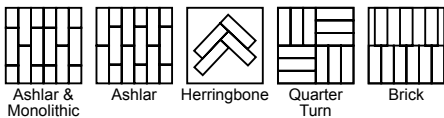
Environment

The design and production of Topaz 4 Tile conforms to the ISO 14001:2004 Environmental Management System and complies with environmental regulations.

As a responsible manufacturer and to minimize our carbon footprint, a majority of our excess production materials are recycled in-house resulting in a minimum of 10% recycled content in our tile backing. Topaz 4 Tile does not contain any PVC in its manufactured materials and packaging.

Topaz 4 Tile is an environmentally friendly "green" carpet.

Installation Method



Ashlar & Monolithic Ashlar Herringbone Quarter Turn Brick

