

First-Lines*

CARPET TILES

VIEW ON WEBSITE



SCAN HERE ↑

**modu
lyss®**



971 BLACK

Brick

Please note: There may be slight color difference between the picture and actual carpet. Slight color variation may occur from dye lot to dye lot.



***541 IMPERIAL BLUE**
***Discontinued Design**



***546 CRIMSON BLUE**
***Discontinued Design**



***856 NUTMEG**
***Discontinued Design**



***916 GRAFLET**
***Discontinued Design**



***966 CRIMSON BLACK**
***Discontinued Design**



***971 BLACK**
***Discontinued Design**



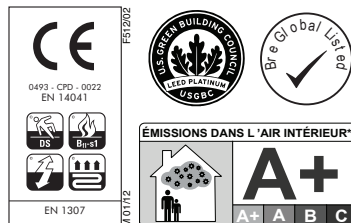
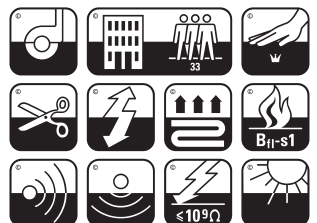
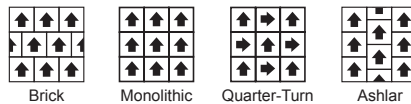
FIRST-LINES Specifications

Construction	Tufted 1/10" Loop
Yarn Composition	92% PA6 Solution Dyed Aqualon + 8% PA6 Space Dyed
Secondary Backing	Back2Back: Modified bitumen enhanced with a thermoplastic elastomer, reinforced with a glass fibre fleece covered with 100% PES fleece 10% recycled content included.
Tufted Pile Weight	Ca. 540 g/m ² (+/- 10%)
Total Weight	Ca. 4300 g/m ² (+/- 10%)
Pile Above Backing	Ca. 330 g/m ²
Pile Height	Ca. 2.9 mm
Total Height	Ca. 6.4 mm
Pile Density	Ca. 0.114 g/m ³
Tuft Density	Ca. 156,000 g/m ²
Tile Size	50 cm x 50 cm
Packing	20 pcs per box (5 m ²)

Performance

Indoor Air Quality (V.O.C.)	Pass - No V.O.C Detected (ASTM-D5116-10)
Fire Resistance	Bfl-s1 (EN 13501-1)
Fastness To Light	> 5-6 (ISO 105-B02)
Rubbing Fastness	≥ 4 (EN ISO 105-X12)
Colour Fastness To Water	≥ 4 (EN ISO 105-E01)
Thermal Resistance	0.047 m ² K/W (ISO 8302)
Impact Noise Rating	ΔL: 37 dB (ISO 10140)
Sound Absorption	αw 0.20 (ISO 354)
	Hz 125 250 500 1000 2000 4000
	αs 0.01 0.04 0.07 0.19 0.29 0.34
	≤ 2 kV (ISO 6356)
Permanent Anti-static	≤ 10 ⁹ Ohm (ISO/DIS 10965)
Transversal Resistance	Max. 0.2 % (EN 986)
Dimensional Stability	A : continuous use (EN 985)
Castor Chair Suitability	33 - LC1 (EN 1307)
Classification	EFEBD30E
GUT-NR	ENP 428
BRE	Démarche HQE® : cf. FDES suivant NF P01-010 Déclaration du 30/07/2003
Données Environnementales	Product contributes toward satisfying Credits 4.3 under LEED®. Products are not reviewed under LEED®, LEED® credit requirements cover the performance of materials in aggregate, not the performance of individual products of brands. For more information on LEED®, visit www.usgbc.org/contact
LEED®	

Installation Method



MADE IN BELGIUM

Kindly check stock availability with us before confirming the order. *Discontinued design.

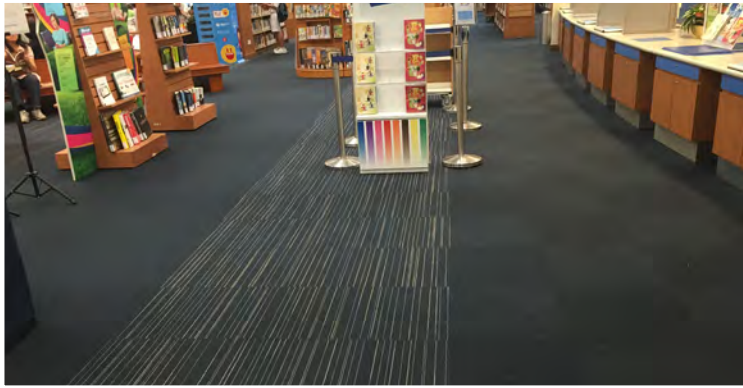
Warranties

- 15 Year Carpet Wear Warranty
- Lifetime Anti-Static Shock Warranty
- Ideal for Heavy Contract Use.

The subfloor should be dry, smooth, flat, dust-free and resistant to compression and load-bearing. Where seaming is necessary, a seam sealant must be used for all such installations. Due to dye lot variations, actual colour may vary slightly from the samples. Chair pads are recommended to prevent premature wear of carpet.

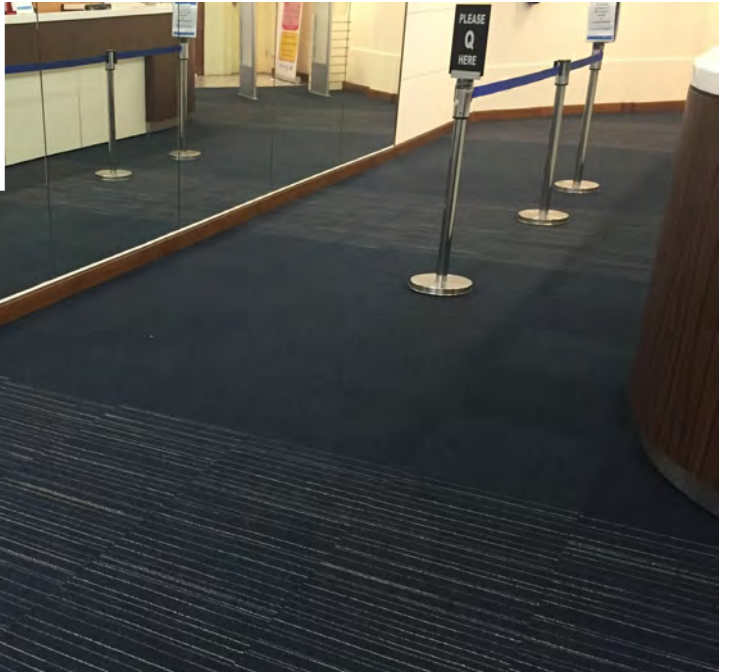


First & First Line Project



Bukit Batok Library

First 990 Black & First Line 971 Black



Monnypenny

First 990 Black



Please note: There may be slight color difference between the picture and actual carpet. Slight color variation may occur from dye lot to dye lot.

SK Jewellery
First Lines 823 Nutmeg



Katowickie Centrum Biznesu
First 990 Black & First Lines 971 Black

