

VIEW ON WEBSITE



SCAN HERE ↑



Elegance & Comfort in Modern Living

# MANDATE 11

CARPET TILES

100% SOLUTION DYED OLEFIN



1152 MERRY GREEN      1156 CHROME YELLOW  
1192 M.GREEN / C.GREY      1159 CLOUDY GREY  
1196 C.YELLOW / C.GREY

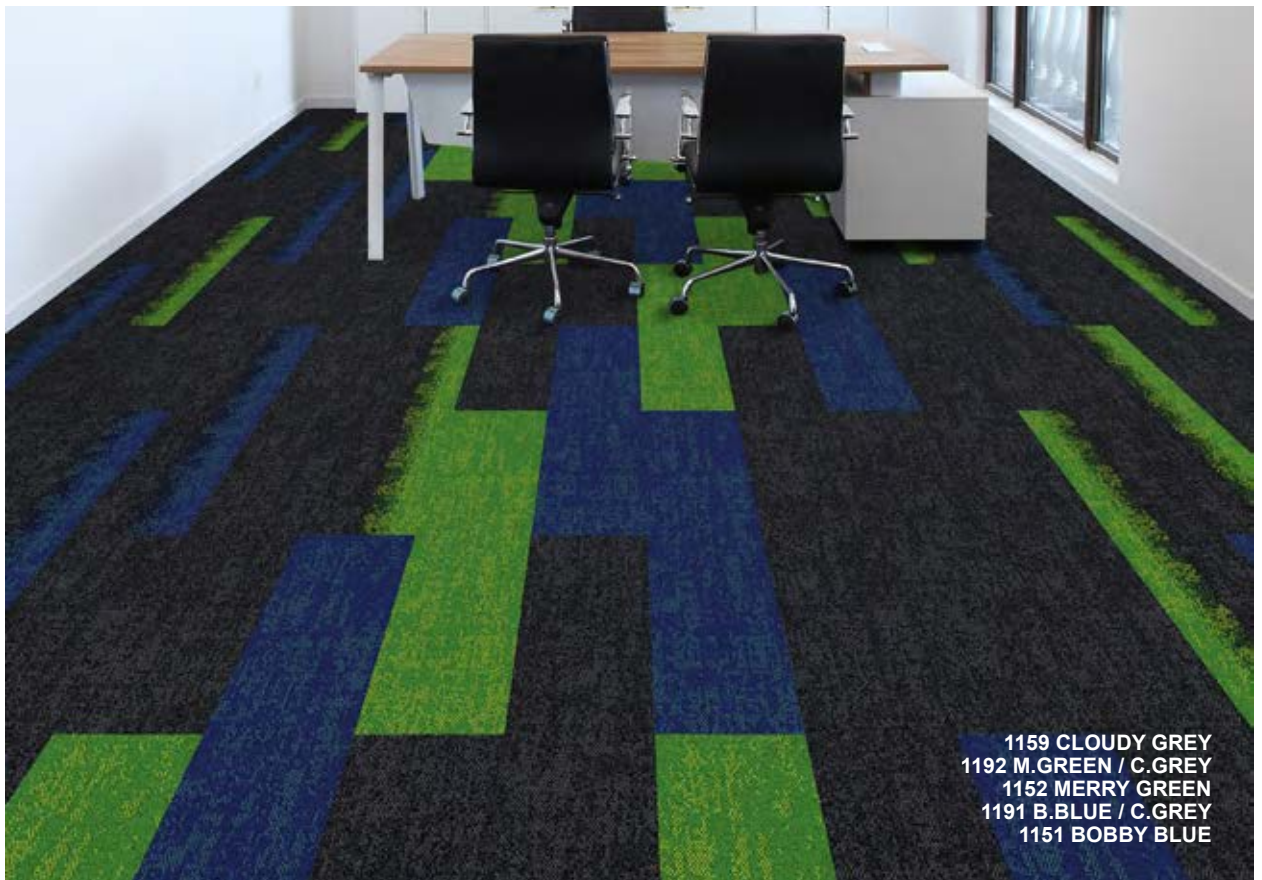
# Mix & Match

1159 CLOUDY GREY  
1191 B.BLUE / C.GREY  
1151 BOBBY BLUE  
1192 M.GREEN / C.GREY  
1152 MERRY GREEN  
1194 D.ORANGE / C.GREY  
1154 DEEP ORANGE  
1196 C.YELLOW / C.GREY  
1156 CHROME YELLOW





1159 CLOUDY GREY  
1191 B.BLUE / C.GREY  
1151 BOBBY BLUE  
1194 D.ORANGE / C.GREY  
1154 DEEP ORANGE  
1196 C.YELLOW / C.GREY  
1156 CHROME YELLOW



1159 CLOUDY GREY  
1192 M.GREEN / C.GREY  
1152 MERRY GREEN  
1191 B.BLUE / C.GREY  
1151 BOBBY BLUE



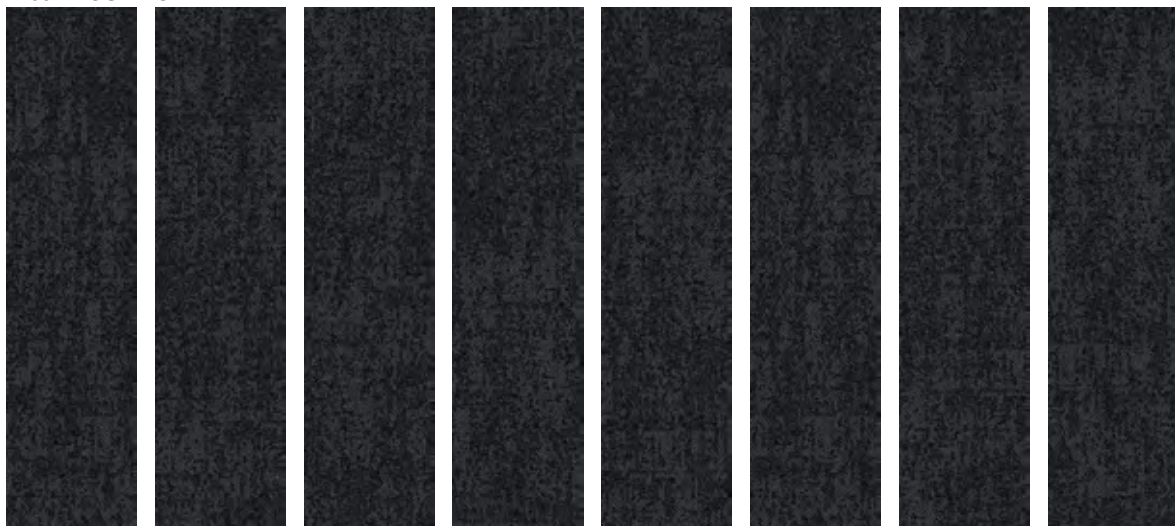
**1159 CLOUDY GREY**  
**1194 D.ORANGE/C.GREY**  
**1154 DEEP ORANGE**  
**1196 C.YELLOW/C.GREY**  
**1156 CHROME YELLOW**



# MANDATE 11

## SWATCHES

1159 CLOUDY GREY

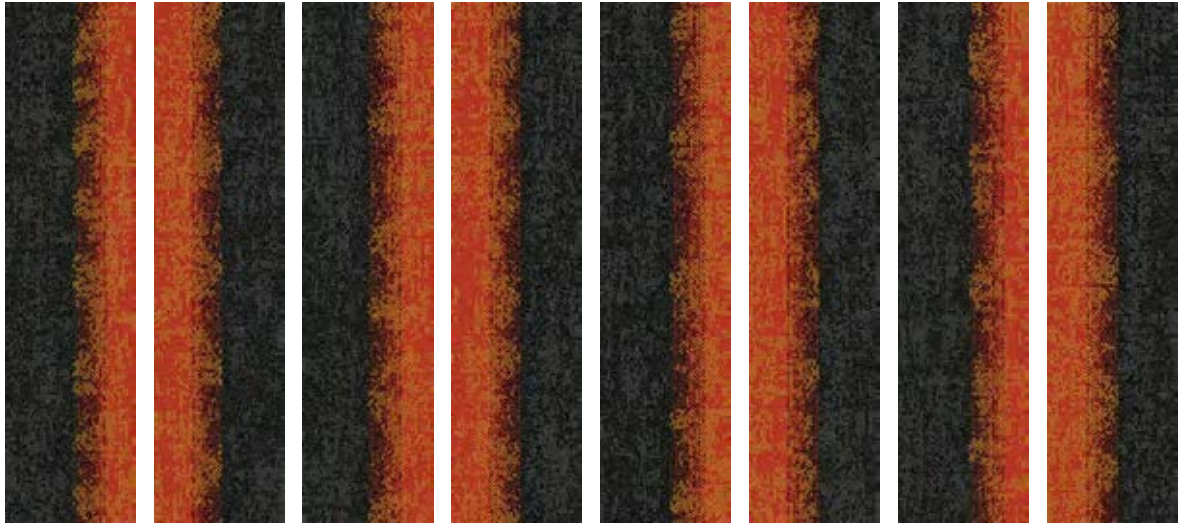


1151 BOBBY BLUE  
1154 DEEP ORANGE  
1156 CHROME YELLOW  
1159 CLOUDY GREY

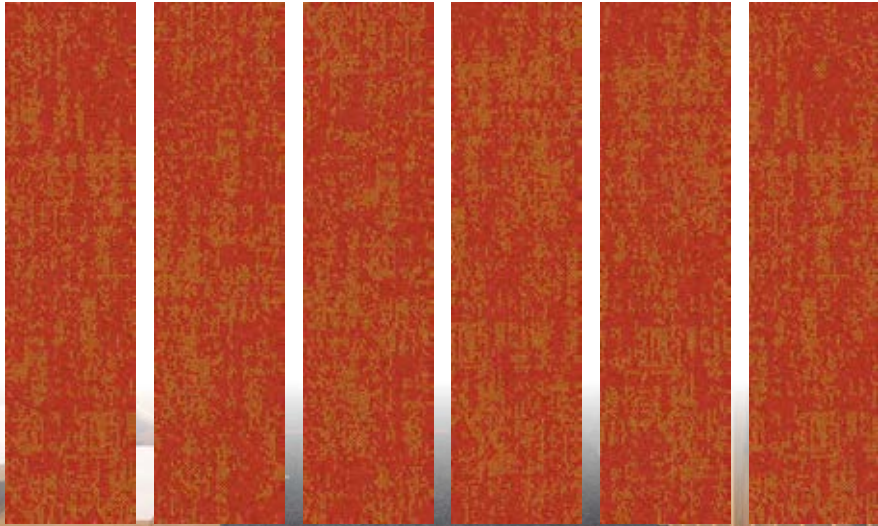
**1159 CLOUDY GREY**  
**1194 D.ORANGE/C.GREY**  
**1154 DEEP ORANGE**



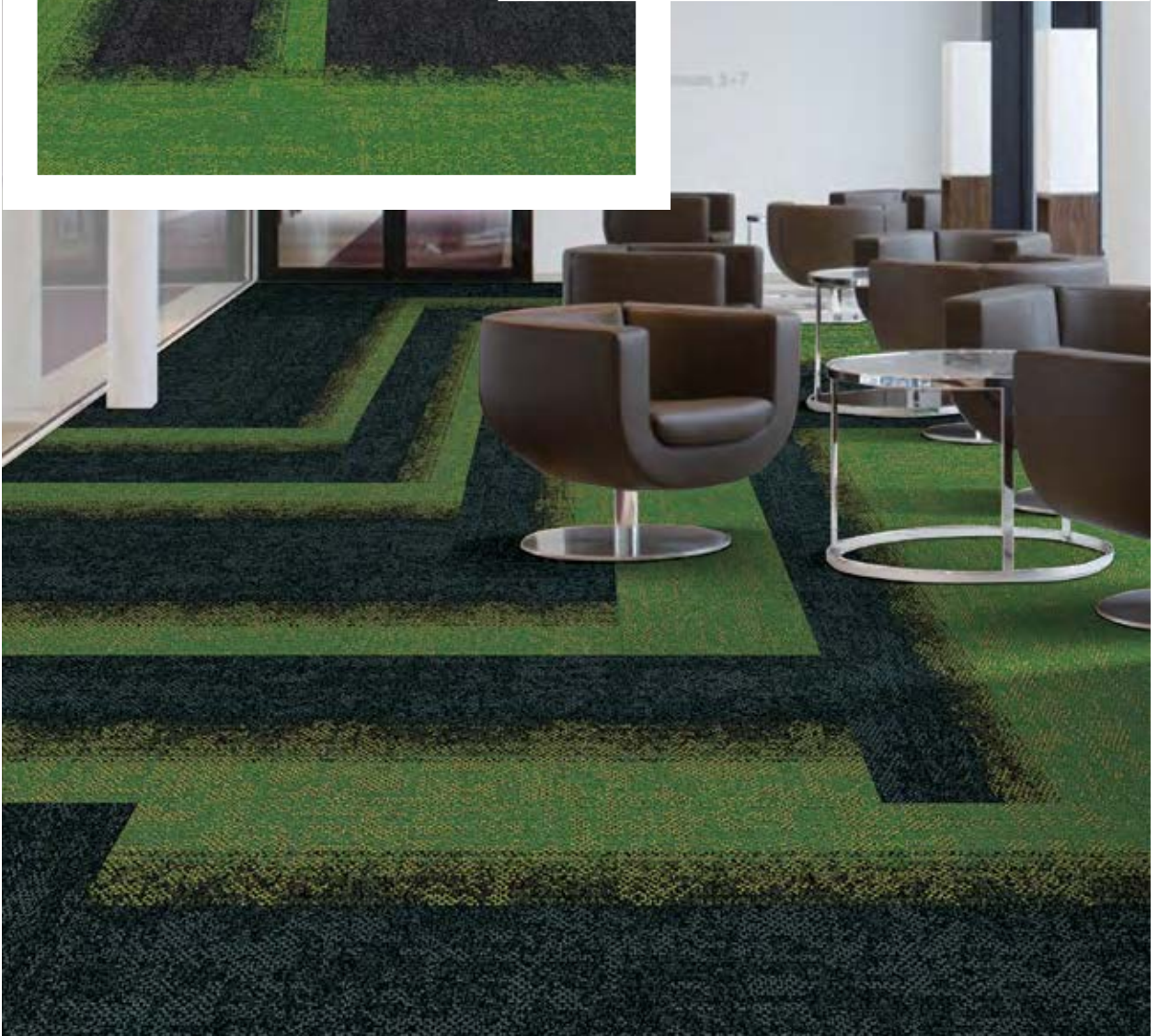
1194 D.ORANGE / C.GREY



1154 DEEP ORANGE

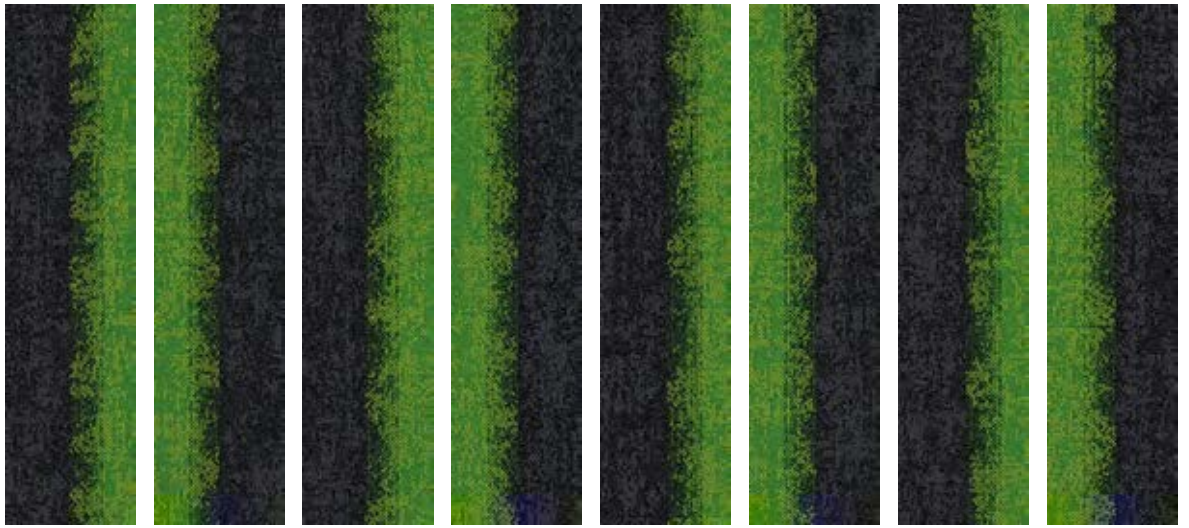


**1159 CLOUDY GREY**  
**1192 M.GREEN/C.GREY**  
**1152 MERRY GREEN**

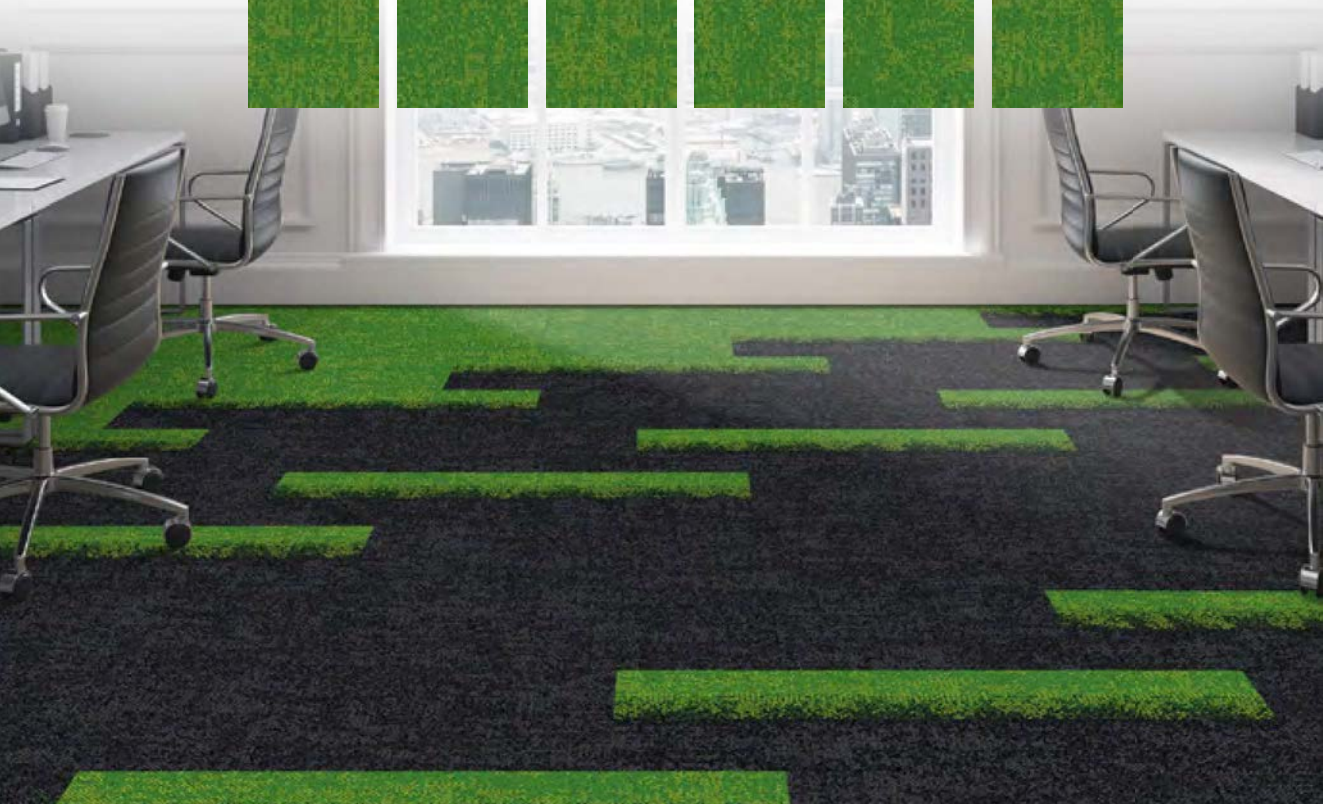
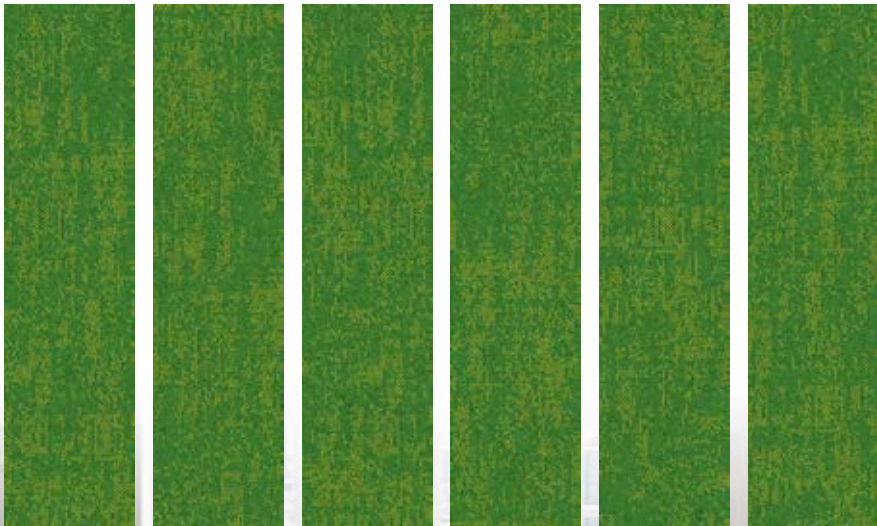




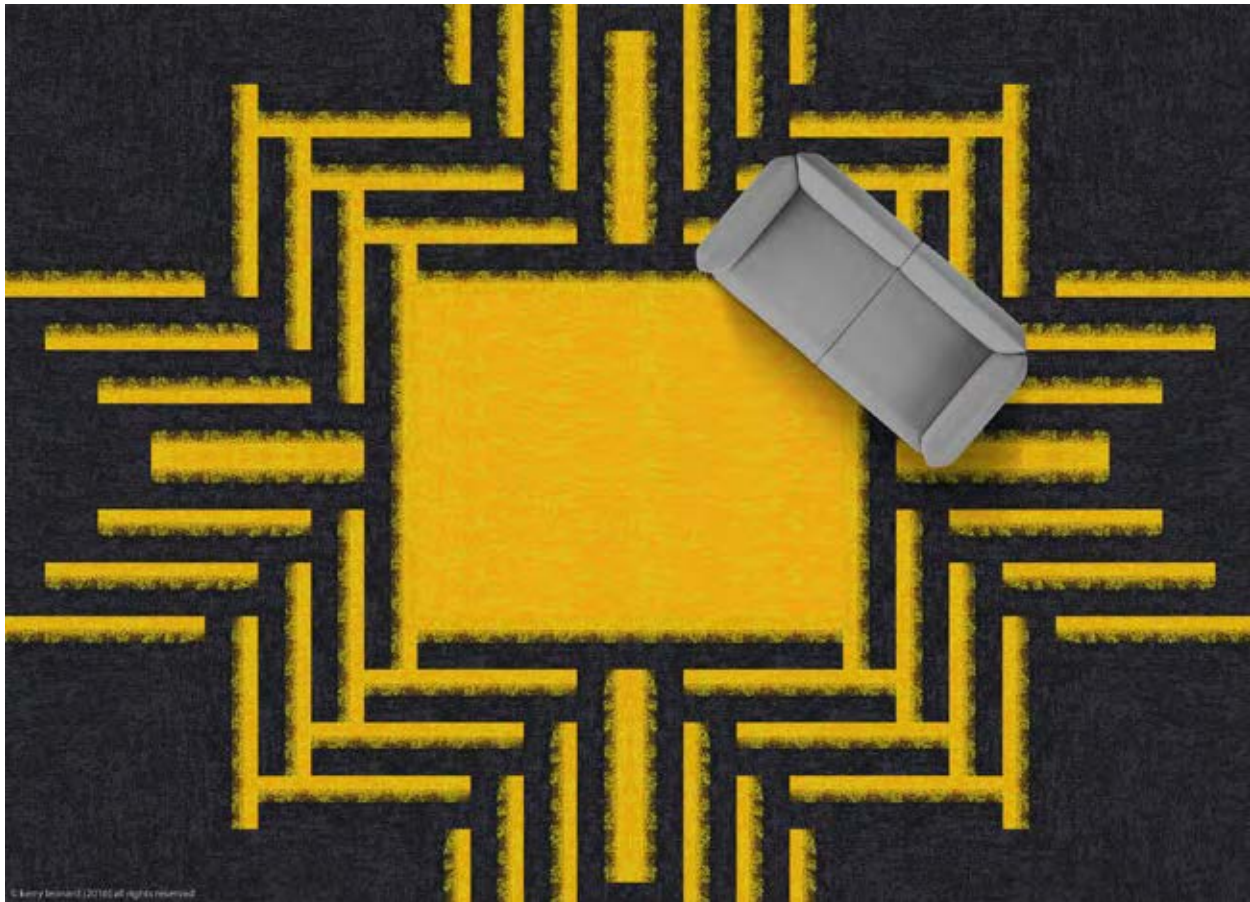
**1192 M.GREEN / C.GREY**



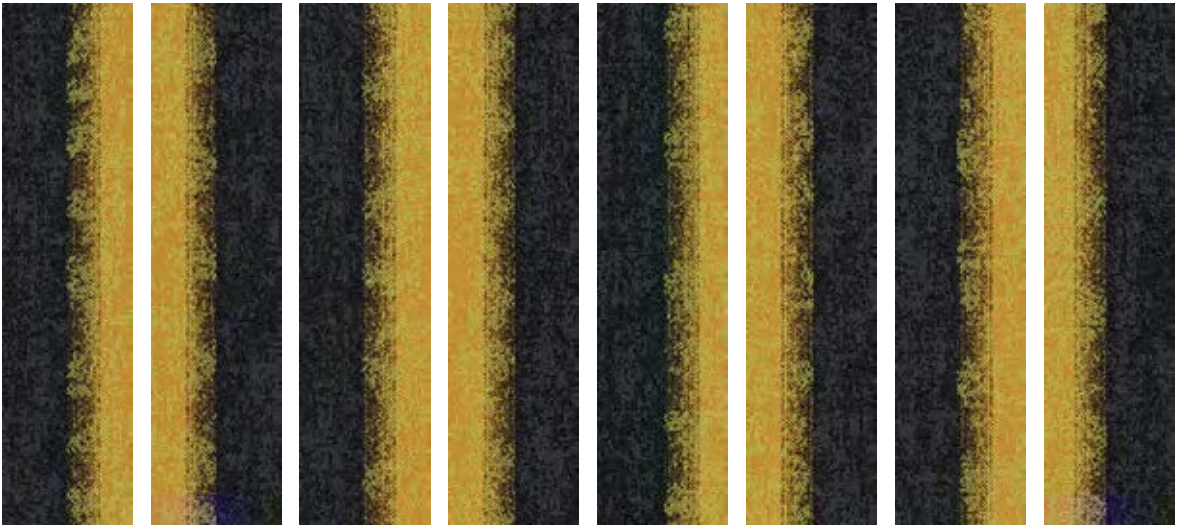
**1152 MERRY GREEN**



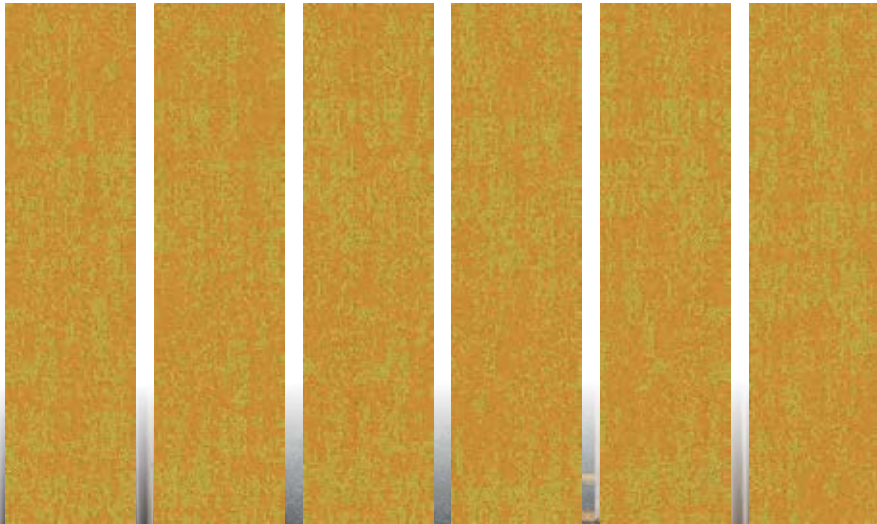
**1159 CLOUDY GREY**  
**1196 C.YELLOW/C.GREY**  
**1156 CHROME YELLOW**



**1196 C.YELLOW / C.GREY**



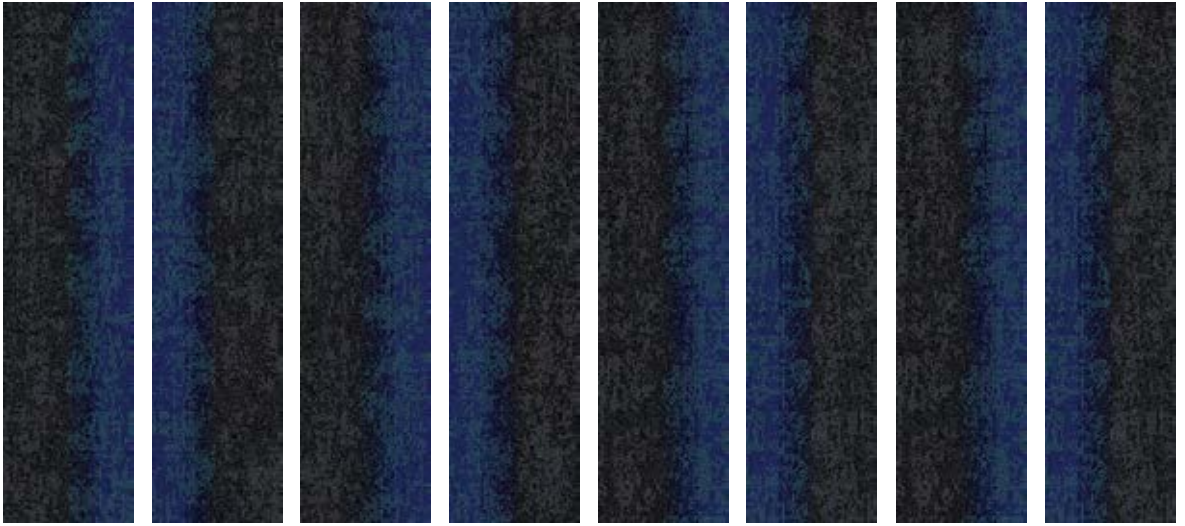
**1156 CHROME YELLOW**



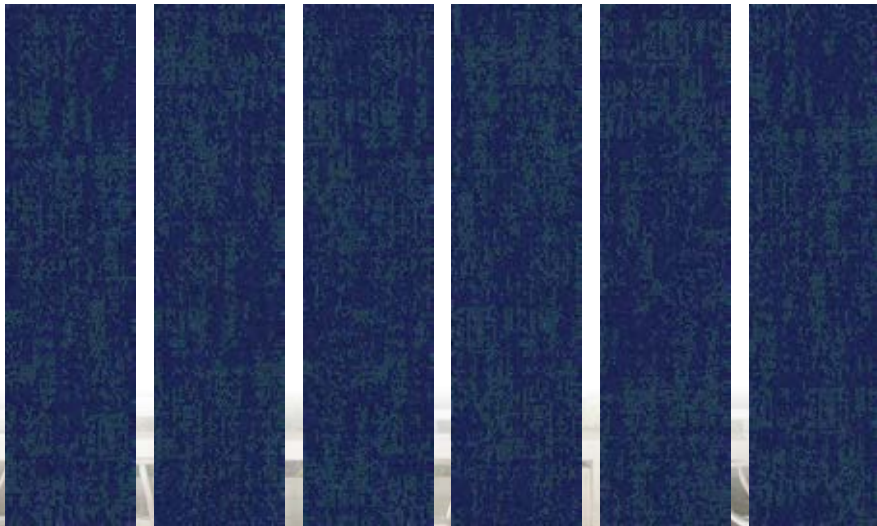
**1159 CLOUDY GREY**  
**1191 B.BLUE/C.GREY**  
**1151 BOBBY BLUE**



**1191 B.BLUE / C.GREY**



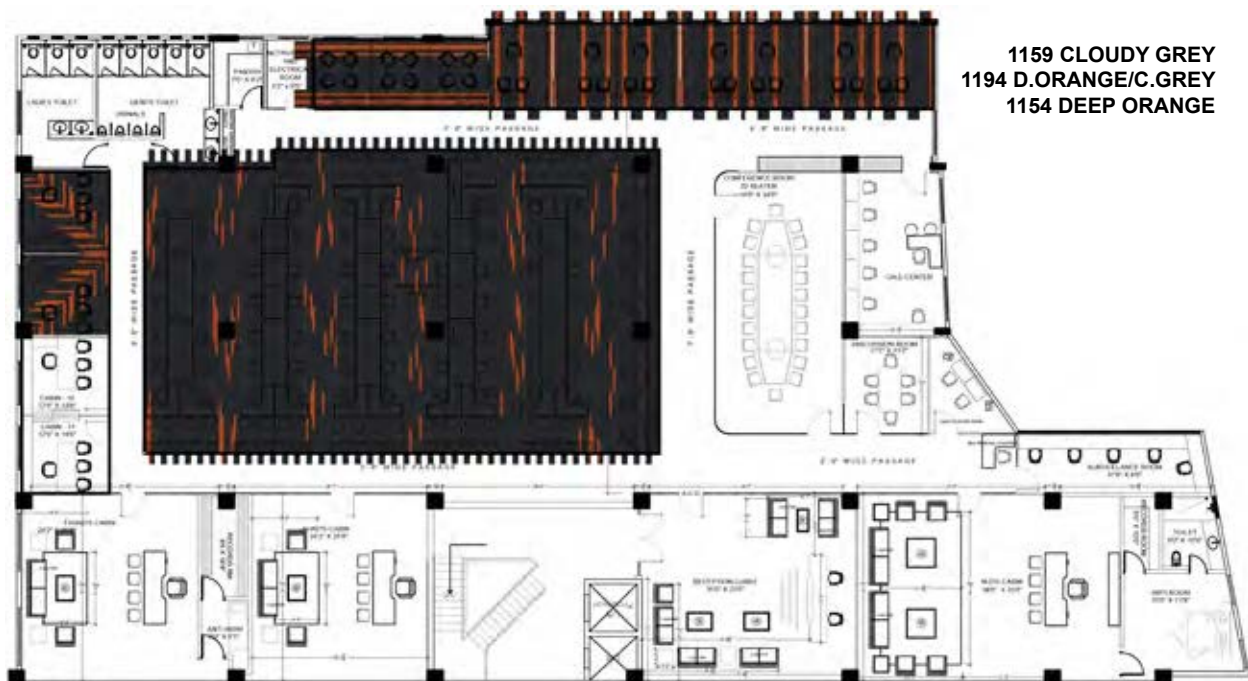
**1151 BOBBY BLUE**



# PROJECT

- 1159 CLOUDY GREY
- 1191 B.BLUE/C.GREY
- 1151 BOBBY BLUE
- 1194 D.ORANGE/C.GREY
- 1154 DEEP ORANGE







1151 BOBBY BLUE



1191 B.BLUE / C.GREY



1152 MERRY GREEN



1192 M.GREEN / C.GREY



1154 DEEP ORANGE



1194 D.ORANGE / C.GREY



1156 CHROME YELLOW



1196 C.YELLOW / C.GREY



1159 CLOUDY GREY

## MANDATE 11 Specifications

Construction	1/12" Loop Pile Graphics
Yarn Composition	100% Solution Dyed Polypropylene
Tufted Pile Weight	Ca. 610 g/m <sup>2</sup> (18 oz/yd <sup>2</sup> ) (+/- 10%)
Total Weight	Ca. 3400 g/m <sup>2</sup> (100 oz/yd <sup>2</sup> ) (+/- 10%)
Pile Height	Ca. 4 mm (+/- 0.5 mm)
Total Height	Ca. 6 mm (+/- 0.5 mm)
Density (APYD)	4,112 ozs/yd <sup>3</sup>
Tuft Density	120,091 stitches/m <sup>2</sup>
Stitch Rate	39.4 per 10cm
Backing	eBac+
Plank Size	25 cm x 100 cm
Packing	20 pcs per box (5 m <sup>2</sup> )

## Performance

(as tested by ITTS Inc. USA)

Stain Resistance	9 (AATCC-175-2003)
Static Control	Pass - Max. 4 kV (AATCC-134-1996)
Tuft Bind	Pass - 8 lbs (ASTM-D-1335)
Dimensional Stability	Pass - Max. 0.1% change (AACHEN)
Indoor Air Quality (V.O.C.)	Pass - No VOC Detected (ASTM-D5116-10)
Impact Noise Rating	ΔL: 26 dB (ISO 10140)
Sound Absorption	αw 0.20 (ISO 354) Hz 125 250 500 1000 2000 4000 αs 0.01 0.03 0.08 0.28 0.35 0.43
Flammability	
- Radiant Panel	Pass - Class II (ASTM-E-648-06)
- Pill Test	Pass - 8 (ASTM-D-2859-06)
- Smoke Density	Pass - Max. 450 (ASTM-E-662-06)
Colourfastness	
- to light	Excellent - 5 (AATCC-16E)
- to wet & dry crocking	Excellent - 5 (AATCC-165)
- to ozone	Excellent - 5 (AATCC-129)

## Warranties

- 10 Year Carpet Wear Warranty
- Lifetime Anti-shock Carpet Warranty
- Ideal for Medium Contract Use.

The subfloor should be dry, smooth, flat, dust-free and resistant to compression and load-bearing. Where seaming is necessary, a seam sealant must be used for all such installations. Due to dye lot variations, actual color may vary slightly from the samples. Chair pads are recommended to prevent premature wear of carpet.

## Environment

The design and production of Mandate 11 Tile conforms to the ISO 14001:2004 Environmental Management System and complies with environmental regulations.

As a responsible manufacturer and to minimize our carbon footprint, a majority of our excess production materials are recycled in-house resulting in a minimum of 10% recycled content in our tile backing. Mandate 11 Tile does not contain any PVC in its manufactured materials and packaging.

Mandate 11 Tile is an environmentally friendly "green" carpet.

## Installation Method

