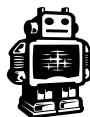
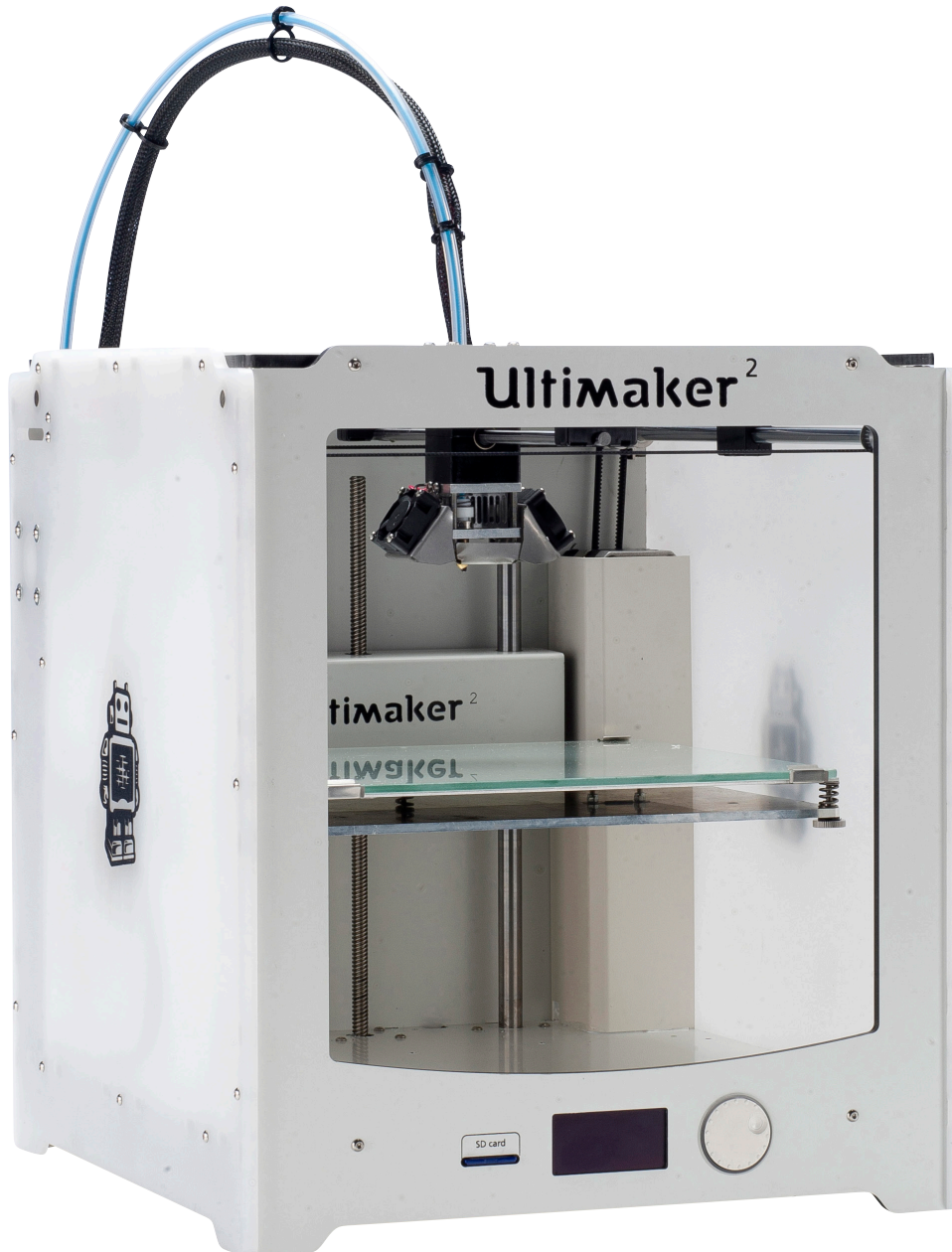


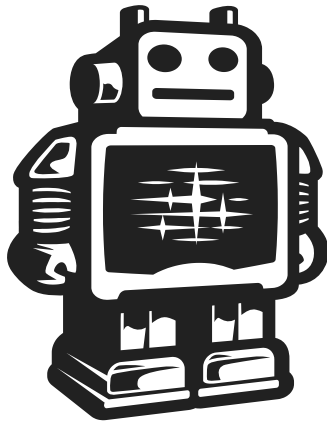
Ultimaker²

The fast, easy to use, Open-source 3D printer

User manual



English Version 1.05



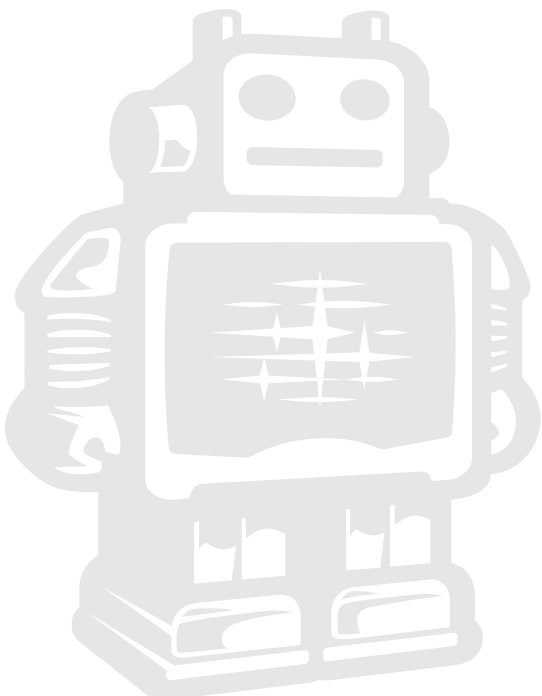
Ultimaker

Table of Contents

A.	Welcome to the ultimaker 2	4
A1.	The Ultimaker experience	5
A2.	Specifications of the Ultimaker 2	6
B.	Get started and unpack your Ultimaker 2	7
B1.	Unboxing your Ultimaker 2	8
B2.	What's in the box	10
B3.	Ultimaker 2 at a Glance	11
C.	Installing parts on your Ultimaker 2	12
C1.	Installing power supply	13
C2.	Installing filament: spool holder and guide	14
C3.	Switch on/off the Ultimaker 2	15
D.	First use of your Ultimaker 2	16
D1.	First time startup	17
D2.	Leveling the build plate	18
D3.	Loading filament material	20
D4.	Make your first 3D print	22
D5.	3D Printing and print removal	23
E.	Make a print file with Cura software	24
E1.	Downloading and installing Cura	25
E2.	Cura software interface	26
E3.	From YouMagine.com to load file in Cura	28
E4.	Preparing a 3D model	29
E5.	From SD-card to print your file	30
F.	Maintenance for your Ultimaker 2	31
F1.	In General	32
F2.	The glass plate	33
F3.	Removing and cleaning the material feeder	34
F4.	Lubricating the axes	35
G.	Troubleshooting and support for the Ultimaker 2	36
G1.	Simple Troubleshooting tips	37
G2.	Contact support	39
G3.	Terminology	40
G4.	Safety and Compliance	41
	Terms of service	42



WELCOME
TO THE
ULTIMAKER 2



A1. The Ultimaker Experience

This User manual is designed to help you start your experience with Ultimaker 2. Within these pages, we want to show you how simple and easy it is to produce great prints.

You might be familiar with earlier types of Ultimakers or other 3D-printers. It is essential that you read this manual carefully as there are a lot of new procedures with Ultimaker 2.



A2. Specification of the Ultimaker 2

Printing

Print technology	Fused filament fabrication (FFF)
Build volume	23 x 22,5 x 20,5 cm
Layer resolution	Ultra high High Medium 20 micron Low 60 micron 100 micron
Position precision	X 12,5 micron Y 12,5 micron Z 5 micron 200 micron
Filament diameter	2.85 mm (generally known as 3 mm filament)
Nozzle diameter	0.4 mm
Print speed	30 mm/1 - 300 mm/s
Travel speed	30 mm/1 - 350 mm/s

Software

Software package	Cura - Official Ultimaker
File types	STL / OBJ / DAE / AMF
Supports	Windows (XP 32 bit/7+) Ubuntu Linux (12.04+) Mac OS X (10.6 64bit +)

Electrical

AC INPUT	100 – 240 V, ~4 AMPS, 50 – 60 HZ 221 watt max.
Power Requirements	24 V DC @ 9.2 AMPS
Connectivity	Stand-alone printing from SD-card USB (firmware) WIFI ready

Physical dimensions

Frame Dimension	X 35.7 cm Y 34.2 cm Z 38.8 cm
With all parts attached and the max height filament guide tube	X 49.2 cm Y 34.2 cm Z 55.8 cm
Shipping box	X 42.0 cm Y 42.0 cm Z 57.8 cm
Weight	11.2 kg
Total Shipping weight	15.6 kg

Temperature

Ambient Operating Temperature	15° - 32° C
Storage Temperature	0° - 32° C
Operating nozzle temperature	180° - 260°
Operating heated build plate temperature	50° - 100°

Sound

Average operational noise	49 dBA.
---------------------------	---------

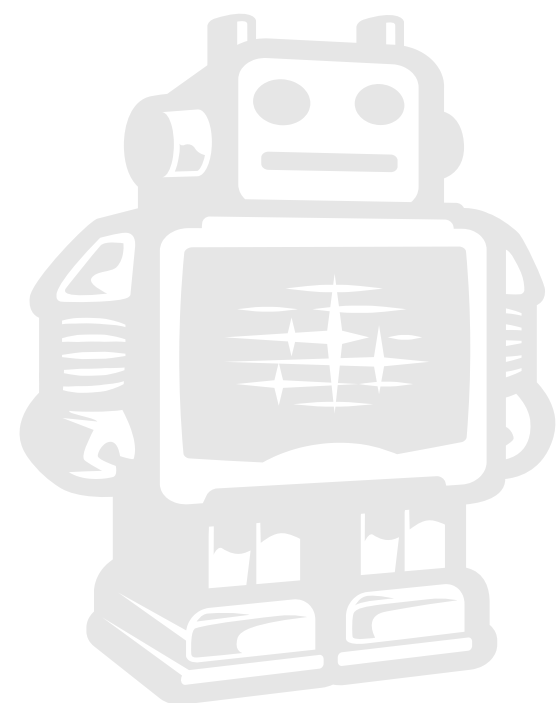
WARNING: The Ultimaker 2 generates high temperatures and has hot moving parts that can cause injury. Never reach inside of the Ultimaker 2 while it is in operation. Always control the Ultimaker 2 from the push wheel on the front or with the power-switch on the back. Allow the Ultimaker 2 to cool down for 5 minutes before reaching inside.

CAUTION: When opening the Ultimaker 2 for service, ensure that the power supply is turned off and the cord is disconnected from the wall socket.

CAUTION: Only use power supply provided with your Ultimaker 2.



GET STARTED & UNPACK YOUR **ULTIMAKER 2**



B1. Unboxing your Ultimaker 2

1. Place the Ultimaker 2 box on a **stable surface**, Placing it centrally on the floor will provide the best accessible position for unpacking.

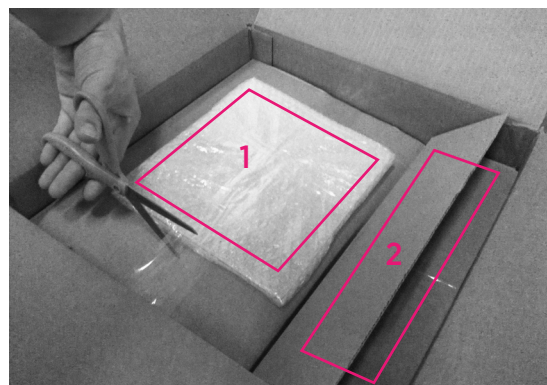
2. Open the box. Here you will see the first cardboard layer with the **User**

manual, Quick use instruction sheet and a **spool with PLA filament material**. We recommend that you use the User manual to guide you through the setup process first.

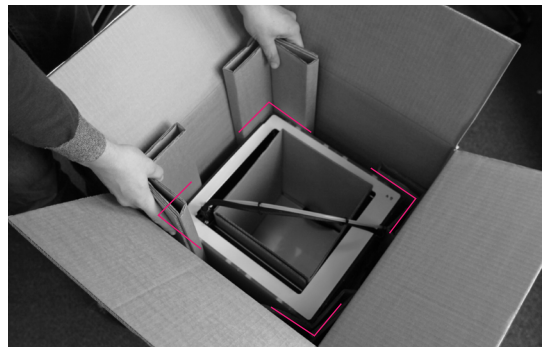
NOTE: You can download a PDF copy of this User manual under manual at the support page: <https://ultimaker.com/pages/support>

3. Remove the first cardboard layer.

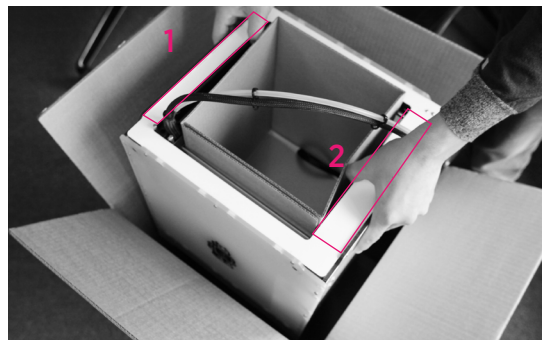
4. Carefully remove & unpack the **glassplate** [1], packed in foil, from the cardboard layer, now you should see a glimpse of your Ultimaker 2. Now also remove the **box** [2] with the Ultimaker 2 accessories.



5. Now remove the **four cardboard corner pieces**.

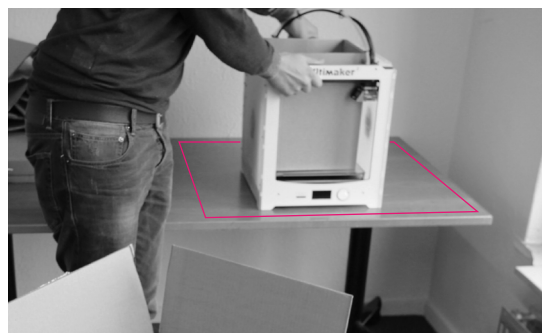


6. Now its time to take out the Ultimaker 2 from the box. Lift it out by pulling it up gently at the **front [1]** and **back [2]** of the Ultimaker 2.



Caution: Make sure you lift **ONLY** by the frame **DO NOT TOUCH** any internal parts of ultimaker 2

7. Position it on a **sturdy table** to optimise the approach and with plenty of space surrounding it.

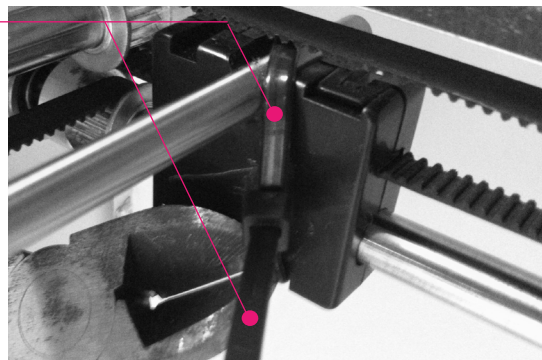


NOTE: Please do not use excessive force when unpacking your Ultimaker 2. Excessive force may lead to damage to the Ultimaker 2 and its components.

8. Remove the **packing cardboard** from inside the Ultimaker 2.



9. At last **uncut & remove the 4 plastic tiewraps** that strap the **XY axis** and **sliderblock** together in the corners of the frame.



B2. What's in the box

Besides your Ultimaker 2 supplied with SD card in the machine, there are a lot of essential accessories that come with this 3D printer. All the following parts should be in the box, please check contents.



Filament spool

1 x



Spool holder & filament guide

1 x



Glue stick

1 x



Power supply and cable

1 x



USB cable (only for firmware update)

1 x



Test print done by this Ultimaker 2

1 x



Hex wrenches

1 x



Grease

1 x



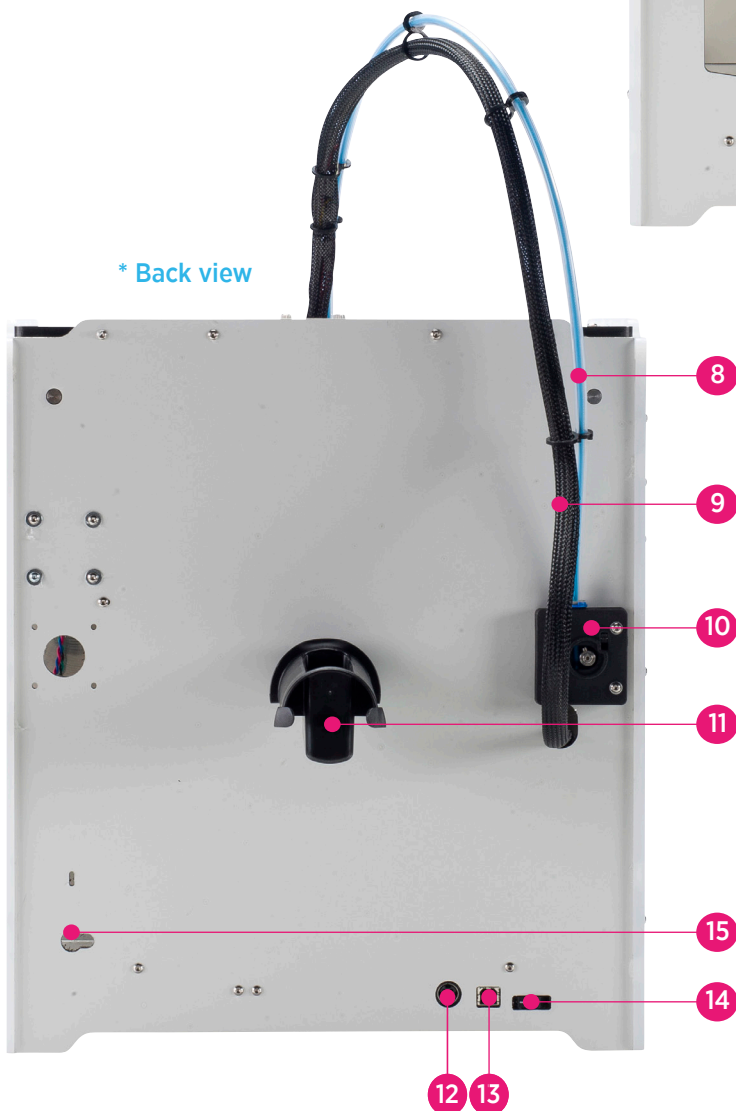
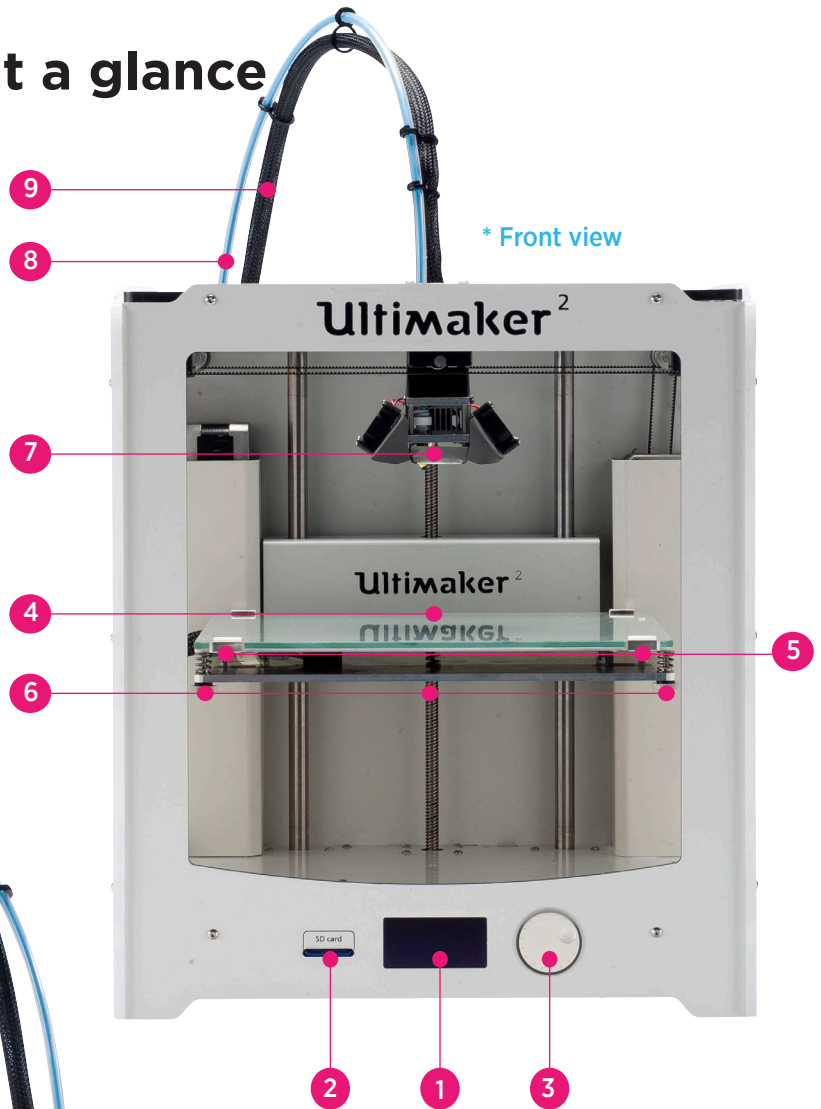
User manual

1 x



B3. Ultimaker 2 at a glance

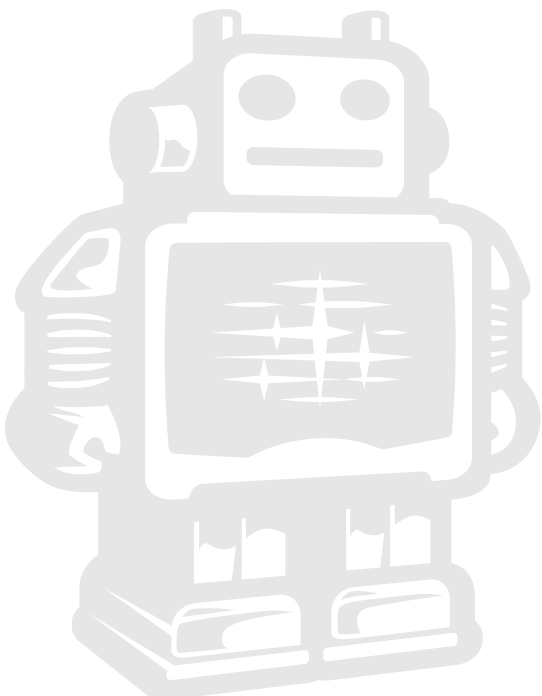
1. Display
2. SD-card slot
3. Push and rotate button
4. Build plate
5. Glass clamps
6. Build plate screws
7. Print head
8. Filament guide tube



9. Print head cable
10. Material feeder
11. Spool holder
12. Power Socket
13. USB Socket
14. Power switch
15. Filament guide hole



INSTALLING PARTS ON YOUR **ULTIMAKER 2**

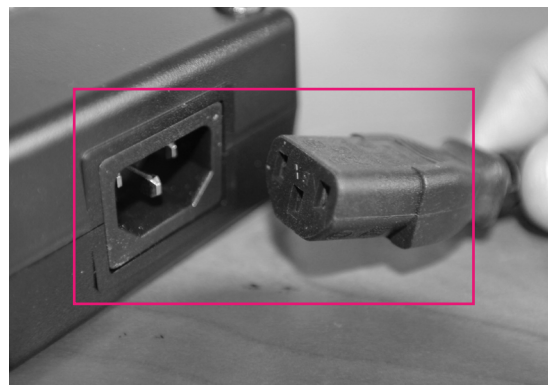


C1. Installing power supply

Attaching power supply

Now the next step is to give the Ultimaker 2 power. This is done by attaching the external power supply.

- 1. First make sure the power switch is in the OFF position**, this is when the button at the back is **pressed to [0]**.
- The corresponding power cable (for your country) has to be **inserted in the power brick** of the power supply.
- The connector has to be inserted at the back of the Ultimaker 2, in the round hole next to the on/off switch and USB slot. The flat side of the power plug has to **face towards the top** of the Ultimaker 2.
- Now plug the external power supply into the wall socket.

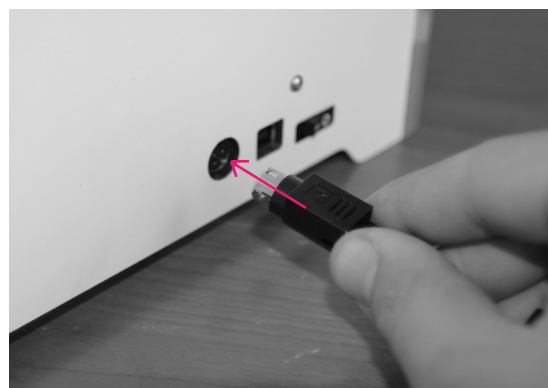


Detaching the power supply

- If the power supply has to be detached, the first step is to **make sure the Ultimaker 2 turned off**. This is done by pressing the power switch to 0.
- Next take the power plug out of the wall socket.
- The plug has a sliding collar. When removing the plug from the machine, gently slide the collar outwards which will release the plug and allow it to come out with ease.

CAUTION: Please make sure not to pull the cable. Excessive force may result in breaking this component.

- The main cable in the power brick can be detached by pulling it out gently.



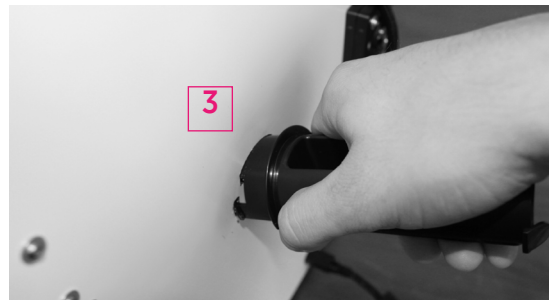
C2. Installing filament: spool holder and Guide

Attaching the spool holder

1. The spool holder attaches to the back of the Ultimaker 2.

2. Take the spool holder and **insert the top through the hole [2]** in the middle of the back.

3. Now **press it further down [3]** until it snaps into place. The filament can now be added. When facing towards the back of the Ultimaker 2 the filament has to turn counter-clockwise around the spool. The filament spool can now be pushed over the spool holder until it “clicks”. This means that the filament spool is fitted. To detaching the spool holder the filament has to be removed

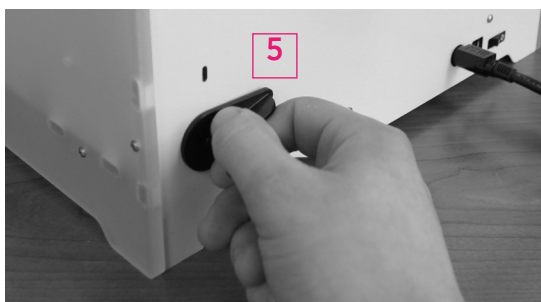
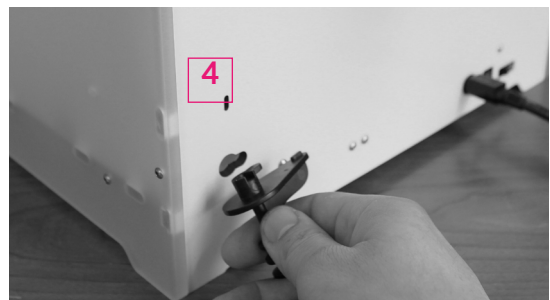


Detaching the spool holder

4. Take the spool holder and **squeeze it at both sides [3]**, now you can easily swivel it up. Now **reverse** steps [3] and [2] The top side of the spool holder is the pivot point. The spool holder should detach easily. Now it can be taken away completely.

Attaching filament guide

5. It works like a key. Orientate it so that it will fit in the hole [4], put it in [5] and rotate counter-clockwise 90 degree's so that the little pin clicks into the tiny hole above [6].

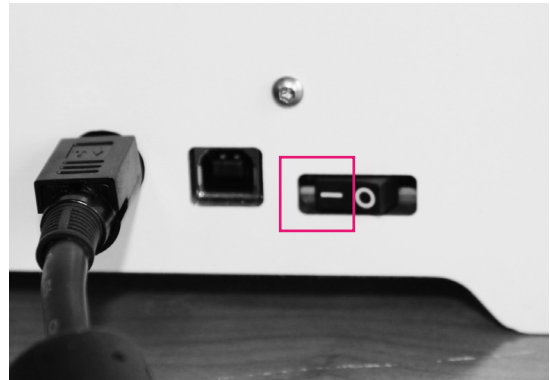


C3. Switch on/off the Ultimaker 2

Switch on the Ultimaker 2

The on/off button (a.k.a. ‘ - | O ’) of the Ultimaker 2 is located at the back. The ‘ O ’ represents off and the ‘ - ’ represents on. When it’s switched to the ‘ - ’ the Ultimaker 2 is turned on and should start up.

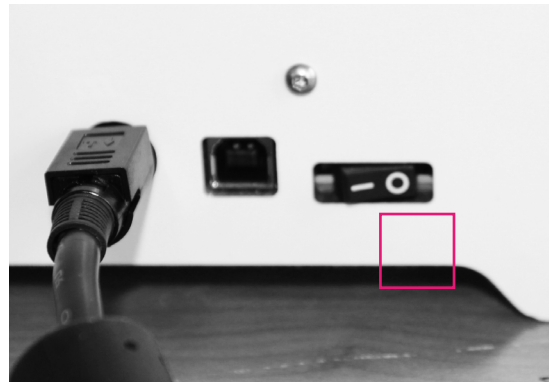
After the Ultimaker 2 has been turned on, the front LED display should light up and the sides should glow.



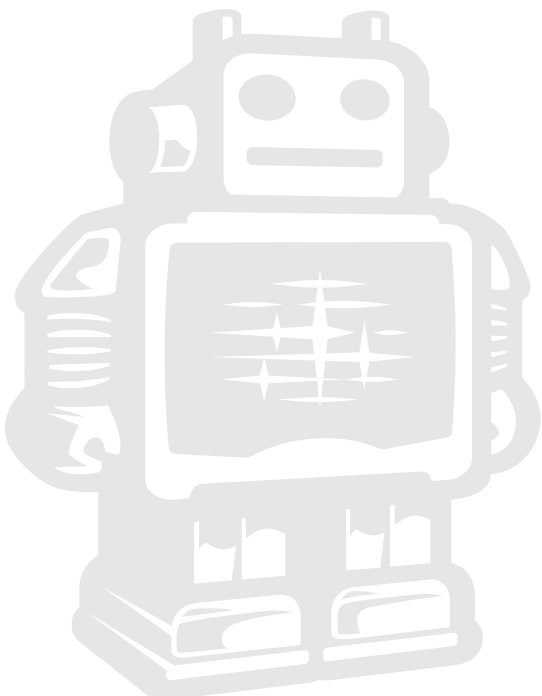
Switch off the Ultimaker 2

The Ultimaker 2 can be turned off by pressing the power switch to ‘ O ’ at any time, it is recommended to only turn off the Ultimaker 2 when it is NOT in use.

When the Ultimaker 2 is switched off, the display and lights will automatically turn themselves off.

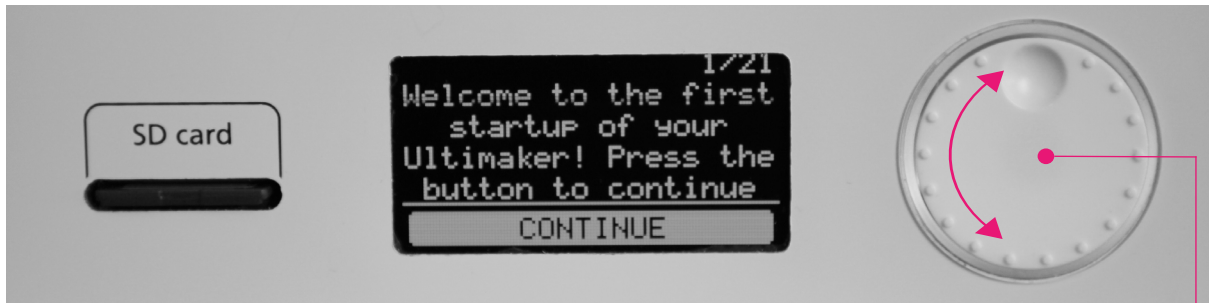


FIRST USE OF YOUR **ULTIMAKER 2**



D1. First time startup

This chapter guides you through the steps and the first run of the Ultimaker 2. After you switch on your Ultimaker 2, the display will light up and guide you through “The First Run Wizard”.



Use of the display

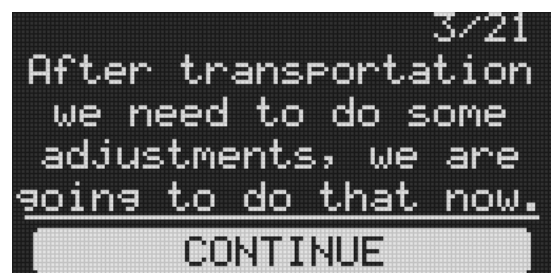
1/21. You can navigate through the display by using the button. This button can be **pushed and rotated**. By **rotating** you can **select** or **control** an action. By **pushing** you can **confirm** an action. When pushing the button you hear a “beep” sound to confirm your chosen action. A blinking button means the Ultimaker 2 is waiting for user input.

2/21. After the Welcome Notification on the LCD screen, click **[CONTINUE]** to go to the next step.



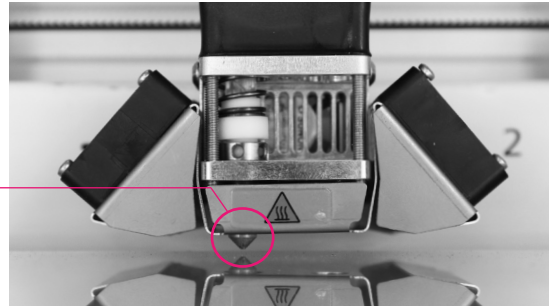
NOTE: If you don't see the first run wizard, navigate to **[MAINTENANCE]**, **[ADVANCED]** and confirm for a **[Factory reset]** You can use this function for the first run wizard at any time

3/21. When you read this step confirm the **[CONTINUE]** to go the next step: Leveling the build plate



D2. Leveling the build plate

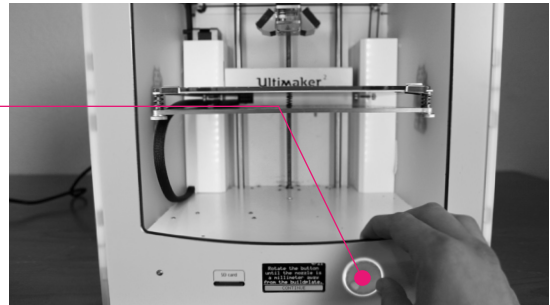
If the build plate is too far away from the **nozzle** your 3D-print might not stick to the build plate. Equally, if you adjust the build plate too close to the **nozzle**, the build plate can block the filament from extruding from the **nozzle**. It can also scratch the build plate.



NOTE: After transportation you might want to level your build plate to ensure your 3D prints stick well to the build plate

How to level the build plate

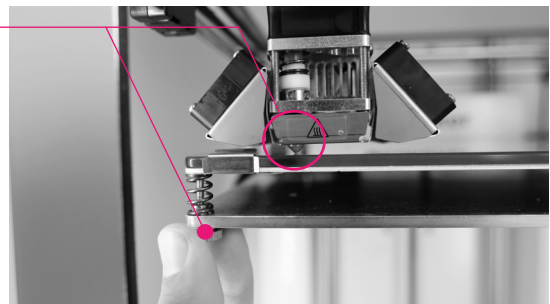
When leveling the build plate you must follow the step 4/21 until 10/21 on the display where the first step **4/21 control the height by rotating this button.**



In the step **5/21** you rotate **this left build plate screw** under the build plate to **control the height between the nozzle and the build plate.**

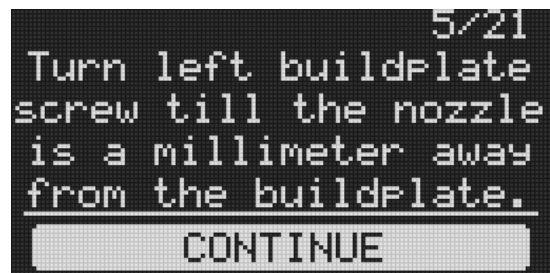
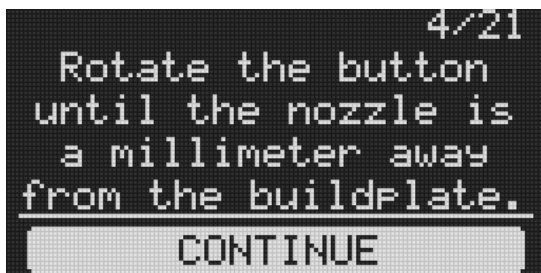
In **6/21** you adjust a similar build plate screw on the right hand side.

Rotating left means closer to the nozzle.



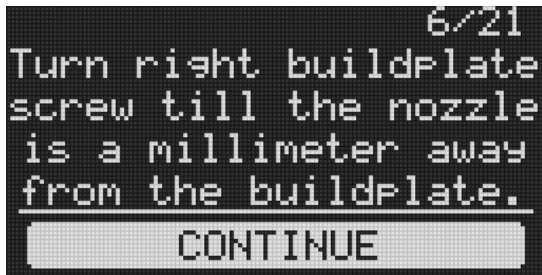
CAUTION: In these steps the print head will automatically move through the Ultimaker 2. Also the Build plate will determine its destination by going up and down again.

Now, follow the display instruction **4/21** and, **5/21**, **[CONTINUE]** when finished.



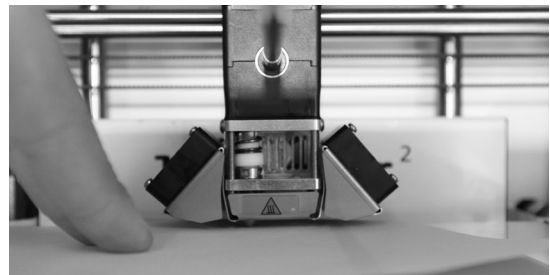
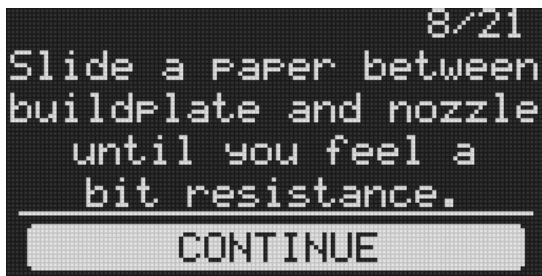
D2. Leveling the build plate (continued)

Follow the display instruction **6/21** and **7/21**, [CONTINUE] when finished.

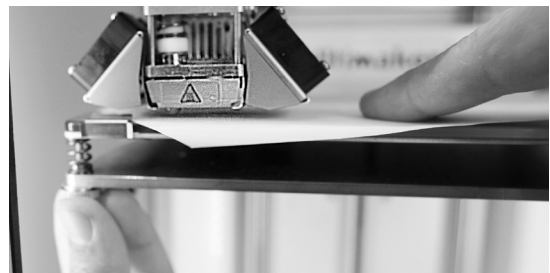


We are going to do this again to **fine tune** the build plate. Please, make sure you have a piece of paper within reach and press [CONTINUE] to go to the next step. Make sure you turn the build plate screw to finetune this step if necessary.

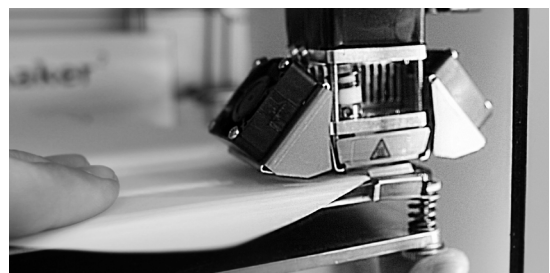
8/21. Follow display instruction as demonstrated in the supporting image and press [CONTINUE] when finished.



9/21. Follow display instruction as demonstrated in the supporting image and press [CONTINUE] when finished.



10/21. Follow display instruction as demonstrated in the supporting image and press [CONTINUE] when finished.



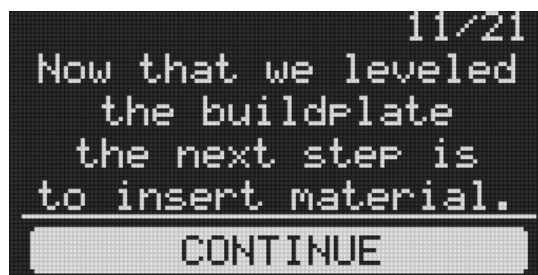
NOTE: If you have problems, or if you need to level your build plate again, you can use the [BUILD PLATE] function under [MAINTENANCE] through the standard menu.



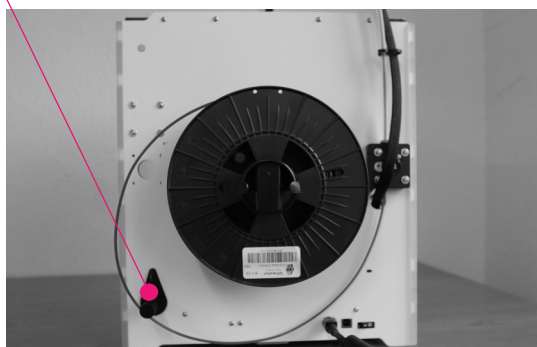
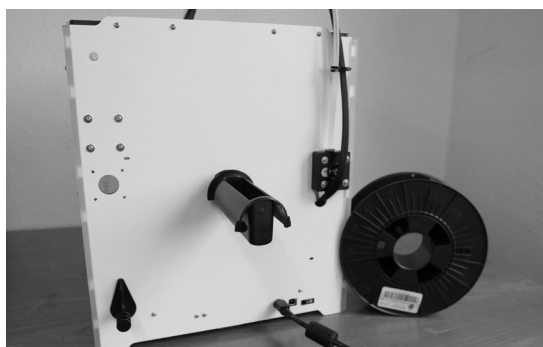
D3. Loading filament material

11/21.

Now that we have completed the initial leveling tasks we [CONTINUE] and go to the step where we are going to insert filament material in the material feeder.



Please make sure you have a **filament spool positioned over the spool holder, guided along the filament guide**, with the filament in counter clockwise direction.



12/21.

In this step, you need to wait a minute while the printhead heats up. Wait for the onscreen progress bar to reach 100%

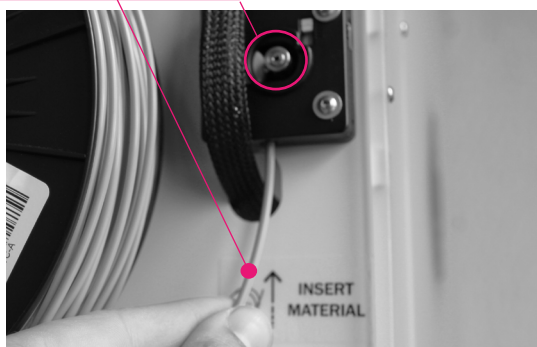


NOTE: The printhead will now move itself to the front automatically.

13/21. This step needs some extra focus.

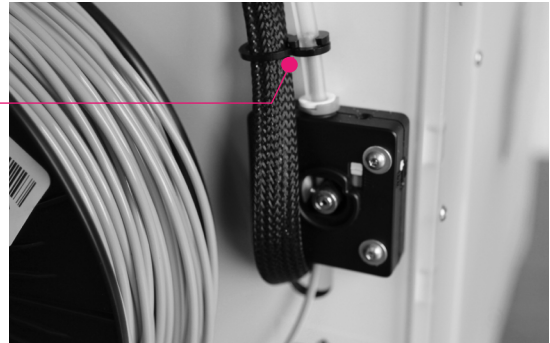
The wheel in the material feeder will start rotating slowly. Take the material and put it in the hole at the bottom of the material feeder. There is a hole where it should go into right above the sticker. Follow the display instruction with the supporting images below but **WAIT!** before pushing [CONTINUE] and check the next page for more instructions.

Push the filament in the material feeder until the filament is being grabbed by the knurled wheel. This takes some force.



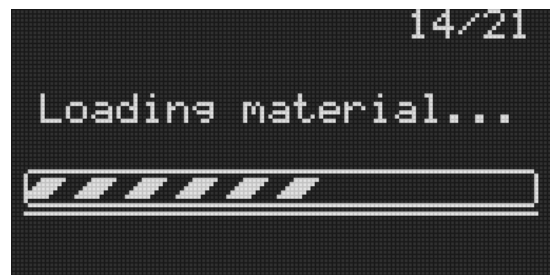
D3. Loading filament material (continued)

You can [CONTINUE] this step, 13/21, when the material is loaded until it reaches **the first bowden tube clip**.



14/21.

The filament is being pulled through the transparent bowden-tube more quickly. Wait until the progress bar is full.



15/21.

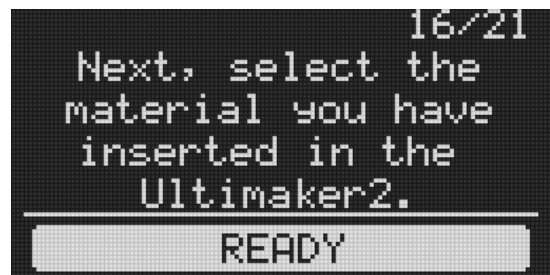
Follow the instruction on the display. When the filament material exits from the nozzle, click the button to [CONTINUE].



WARNING: Do not touch the extruder while it is heating, it is heating up to 220° C

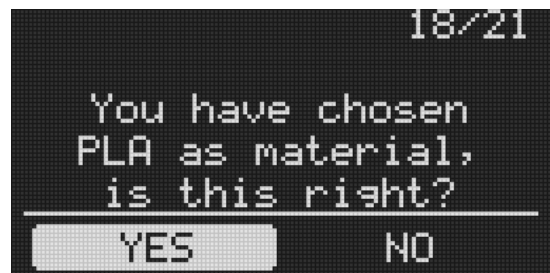
NOTE: Don't be surprised if the material that initially comes out of the nozzle is not the color you expected. There's probably some filament left inside the nozzle. This is caused by testing the Ultimaker 2 before packing. Wait until you see the color that you loaded comes out of the nozzle before you [CONTINUE].

Follow the display instruction 16/21 and 17/21. Make sure you choose the right material, this material type is usually indicated on the filament spool.



Press the [READY] to choose the material.

18/21. Confirm the selection by choosing [YES] or [NO]

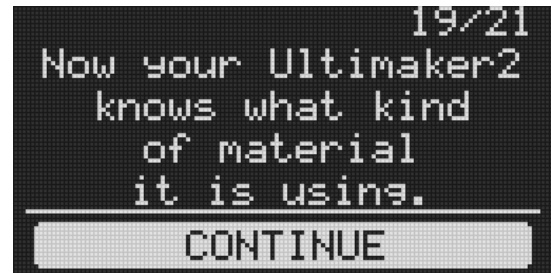


D4. Make your first 3D print

19/21.

It is important to tell your Ultimaker 2 which type of material it will be using. Ultimaker 2 will adjust its settings to match with specific materials.

[CONTINUE] to go to the next step



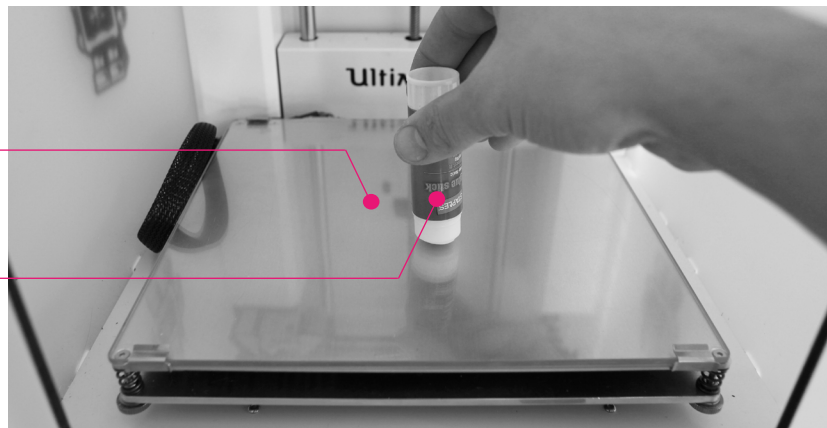
20/21. Now that the Ultimaker 2 has leveled its build plate and has material filament loaded, it can now begin to 3D print.

[ARE YOU READY] to go to the next step!



IMPORTANT.

Before you continue onto the next step, make sure that you add **a thin layer of glue** on the middle of the glass print plate. Use **the provided gluestick** that came with your Ultimaker 2.

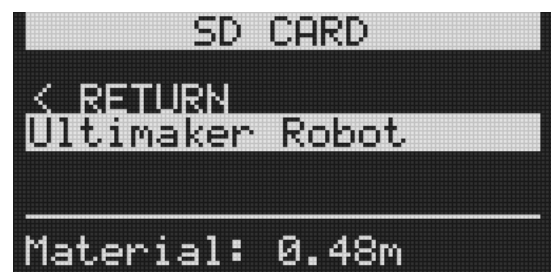


21/21. Make sure you have the SD-card inserted that came with your Ultimaker 2, If not, the SD-card can be inserted at the front of the Ultimaker 2 on the right side of the display in the SD-card slot.

[LET'S PRINT] to start 3D printing!



Your SD-card comes with the file [Ultimaker Robot] click the button if you would like to print this file.



D5. 3D printing and print removal

After you have chosen your [Ultimaker Robot] to print your Ultimaker 2 will prepare itself and heat its print head nozzle and build plate. (This can take up to 5 minutes)



WARNING: Do not touch the extruder while it is heating and in use. Temperatures can vary between 220° C and 260° C

While printing, the LCD display will indicate the progress of your print and the remaining time to completion. There is also on screen, the options [TUNE] and [ABORT].



When your 3D print is finished, the display will indicate that the Ultimaker 2 is cooling down. The progress bar indicates when it is safe to take out your print.

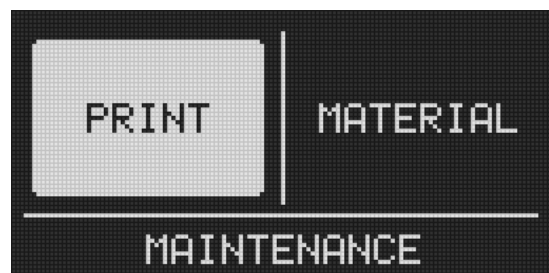


WARNING: Do not touch the print inside the Ultimaker 2 while it is still cooling down. Wait until the display tells you "Print Finished. You can remove the print". Some parts are cooling down from a temperature of max. 260° C and might be still very hot.

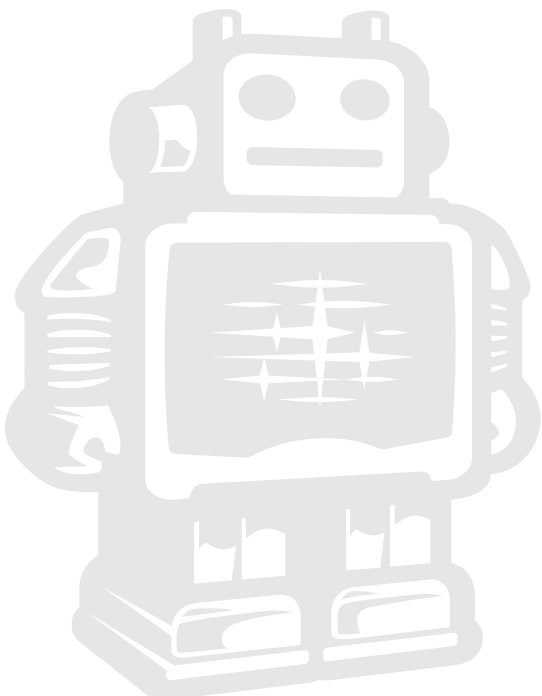
Now your print and your Ultimaker 2 is at a safe temperature. You can remove the print. Select the [BACK TO MENU] to start the next print. Also on this screen, you have the options to [CHANGE MATERIAL] and [MAINTENANCE].



Because you have completed the "First run wizard" this is now your home menu every time you start up your Ultimaker 2. Under [MAINTENANCE] and the [ADVANCED] you can choose [Factory reset] if you want to do the "First run wizard" again.



MAKE A PRINTFILE WITH **CURA SOFTWARE**



E1. Downloading and installing Cura

The preferred software for your Ultimaker 2 is **Cura** from Ultimaker. This software package prepares your 3D model into instructions that your Ultimaker 2 uses to produce an object.



1. The Cura software package can be downloaded from the “**Our software**” section on our website: www.ultimaker.com/pages/our-software

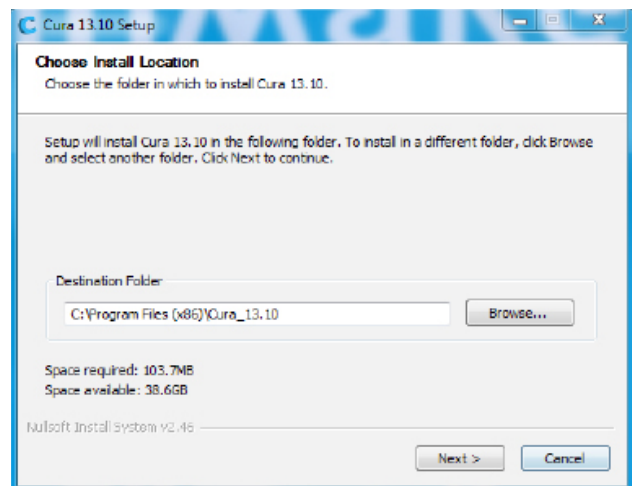
2. Download the latest version of Cura for your operating system. Our software is available for, WindowsXP or newer, MacOS 10.6 or newer and Ubuntu Linux 12.10 or newer.



3. Open the installer and follow the directions to install the software.

4. After installing Cura, Cura will ask what kind of 3D printer you have. Select the **Ultimaker 2**. No other configuration will be required, and Cura will be ready to use.

5. After the installation you will see the Ultimaker-robot positioned in the Cura interface.

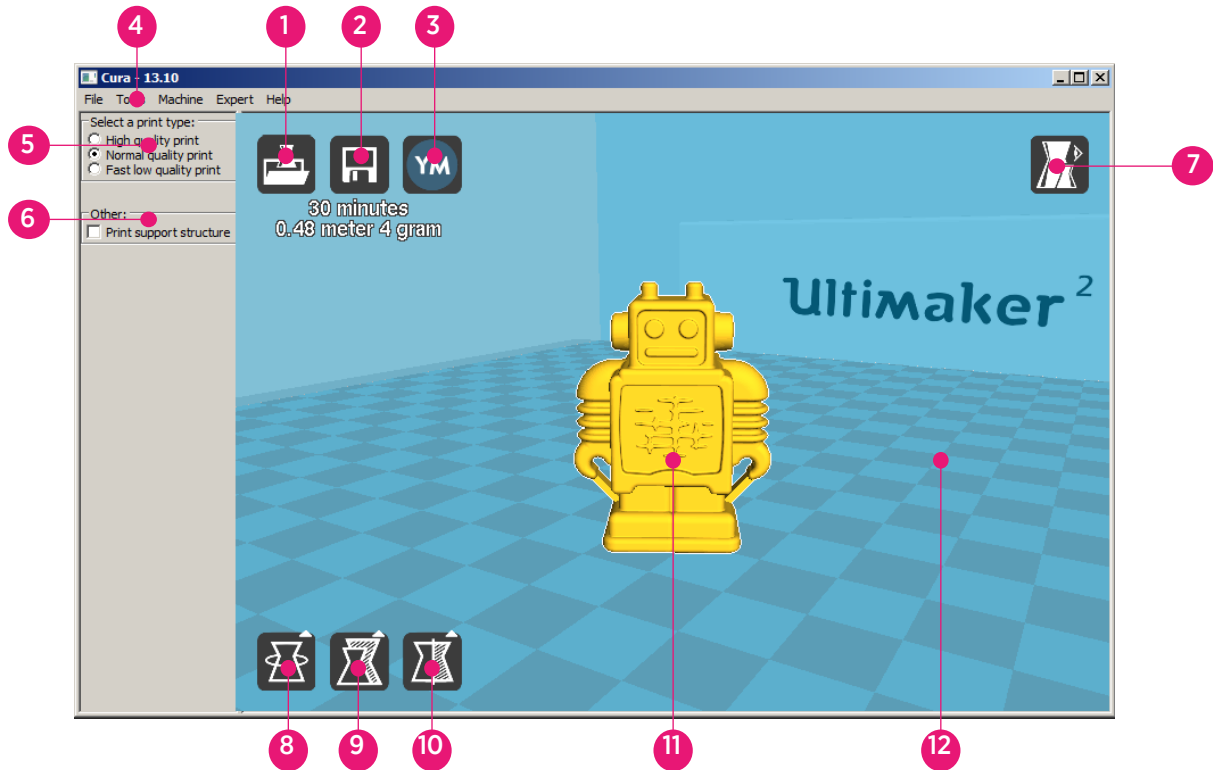


NOTE: We keep on updating our software, so the latest version that you have downloaded might be a newer version than the one in this manual.



E2. Cura software interface

This is the main screen of Cura. Here you can choose which object or objects to print. And how you want them to be printed.



1. Load file

Click this button to load an object to your print area. You can add as many objects as you can fit on the plate.

2. Save toolpath (SD)

When you press this button the prepared toolpath will be saved on the SD card.

3. Share on YouMagine.com

Through this button you can share your 3D files on YouMagine.

4. Menu bar

In this bar you can change to Full settings, preferences and more expert settings.

5. Print type profiles

3 options to choose a print profile.

6. Print with support structure

The option to give your model some support material to make the print more successful.

7. View modes

After your model has been prepared for printing, you can use different view modes to analyse your design.

8. Rotate model options

Option to change the rotation of the object you like to print.

9. Scale model options

Option to change the scale of the object you like to print.

10. Mirror model options

Options to mirror the object you'd like to print.

11. Loaded 3D model

This is the object you have loaded through the load file button.

12. 3D print volume

This is a visualisation of the print area of your Ultimaker.



E2. Cura software interface (continued)

The following mouse actions are used to work, navigate and view the 3D model:



Leftmouse button

Select objects. Hold and move the mouse to drag object on the 3D print area.



Scrollwheel button

Use the scroll wheel to zoom in or out.



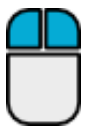
Rightmouse button

Hold and move the mouse to rotate the viewpoint around the 3D model.



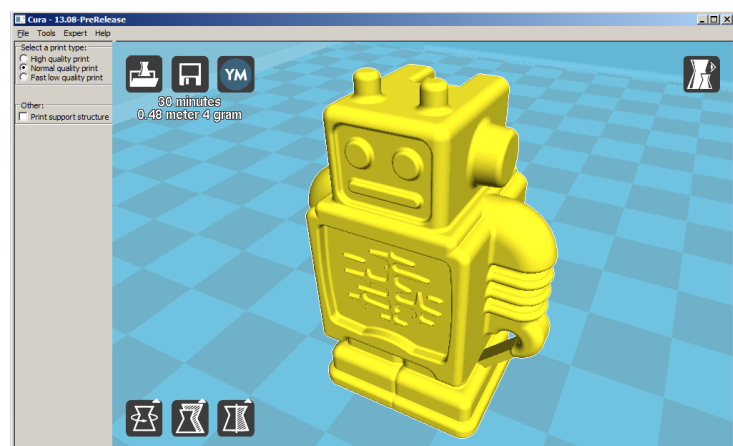
Rightmouse button + Shift

Hold and move the mouse to pan the 3D view.



Right and left mouse button

Hold and move the mouse to zoom.



E3. From YouMagine.com to load file in Cura

Now that you are familiar with Cura we continue to explain how you can download a 3D file from **YouMagine.com** and load this into Cura.

YouMagine.com is an online community for 3D printing.

1. Open your browser and go to **www.youmagine.com**

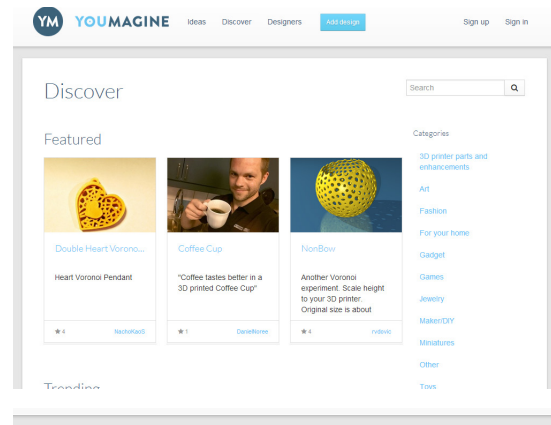
2. Use the search field at the menu bar next to the magnifying glass to find a model of your interest. Let's search for example "coffee cup" and 'Enter'.

3. Choose a design you like.

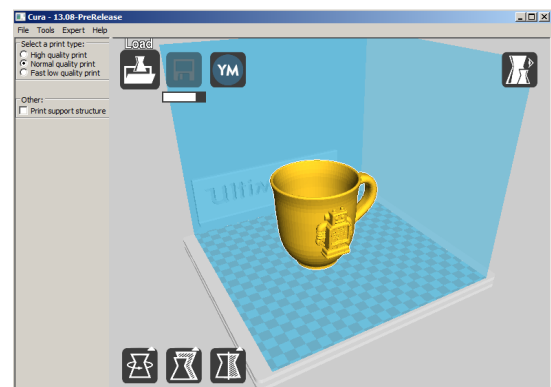
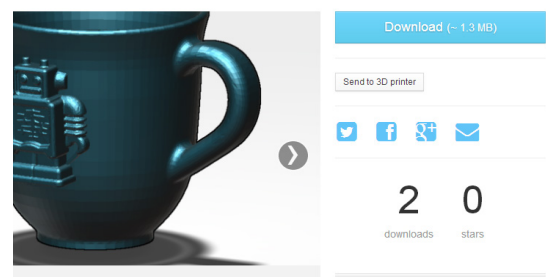
4. The following page will provide you a 'Download' button where you can get your .stl file which is needed to print a 3D model.

5. The .stl file can be loaded into the Cura software, explained more fully in the next chapter.

Tip: If you've made a 3D design yourself, you can contribute back to the YouMagine community!



Coffee Cup by NachoKaoS



NOTE: The screenshots may not look and work exactly the same because this platform is in continuous development.



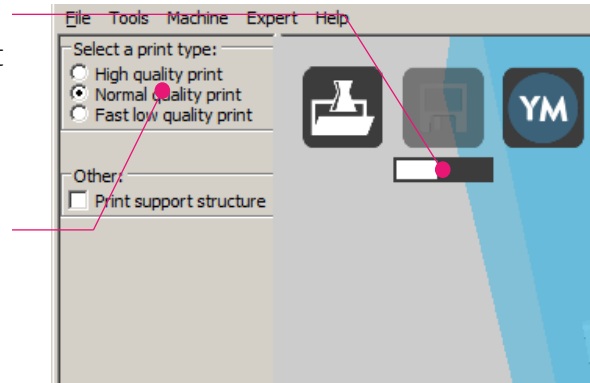
E4. Preparing a 3D model

1. Most 3D printable files that you will find on YouMagine.com are in the STL format. Let's start by clicking on the **Load** button in Cura.



2. When you have loaded a file into Cura you might notice the **progress bar**. Cura is automatically making the 3D model print ready for you.

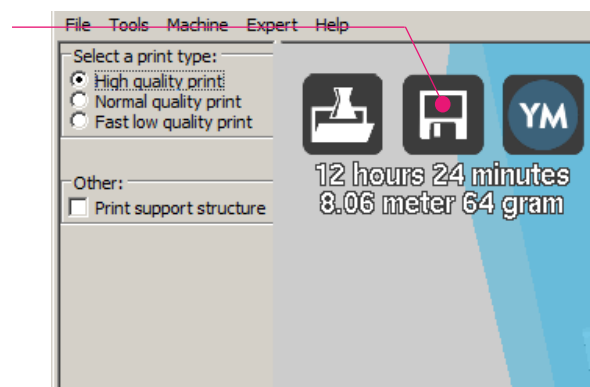
3. In the meantime you can adjust settings and **select a print type**.



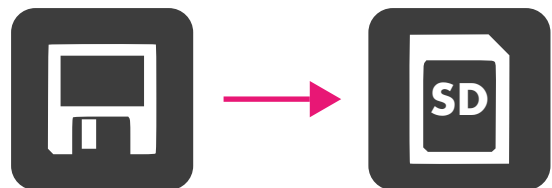
4. When the 3D model is prepared, the **Save toolpath button shows up and gives you the option to** save the prepared model in a directory.

Underneath the button Cura gives you an indication about your print on

- Estimated Print Time
- Amount of material required
- And the weight of your 3D print



5. After you inserted the included SD-card into your computer, Cura changes the **Save toolpath** Button into the **Toolpath to SD** Button.



6. Just after you choose for the **Toolpath to SD** button you will see the same progress bar but now it saves the file on the SD card.

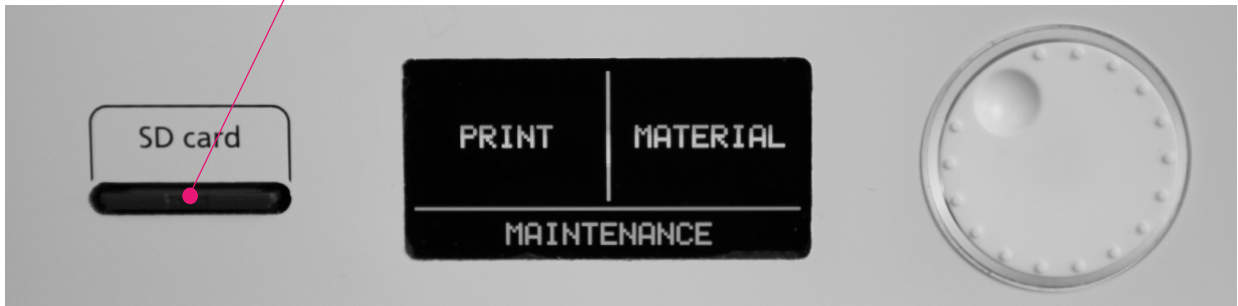
7. When finished saving It will give you the notification that **your file has been saved**.

8. Before taking out the SD-card make sure you always choose the **safely eject** button in Cura.

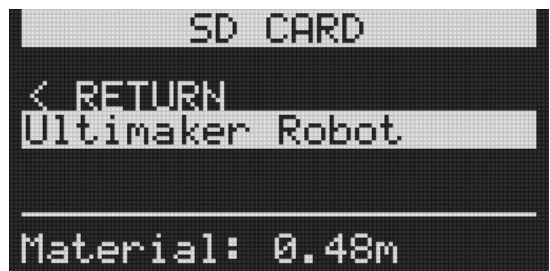


E5. From SD-card to print your file

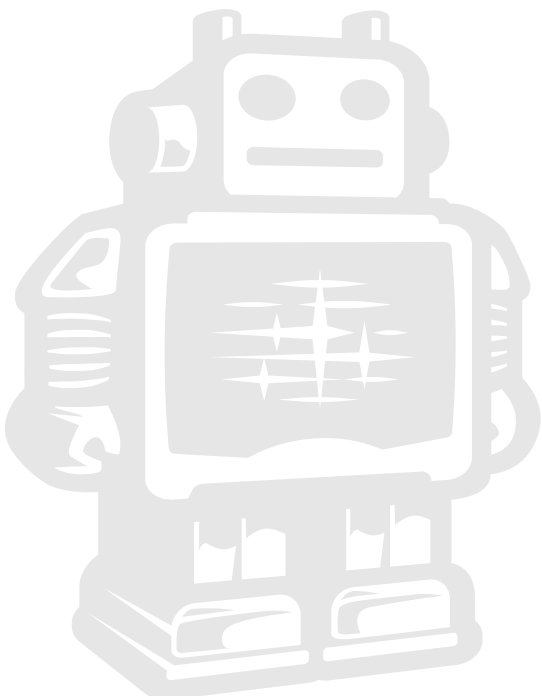
1. After saving the file and safely ejecting your SD-card from your computer, it is time to insert it in the **SD-card Slot** at the front of your Ultimaker 2.



2. By rotating the button and selecting **[PRINT]**, you can now choose your desired print model from the SD-card.



MAINTENANCE FOR YOUR **ULTIMAKER 2**



F1. In General

To achieve the best possible results from your Ultimaker 2, some basic annual **maintenance** is recommended. This chapter contains tips which helps you to keep the Ultimaker 2 running at it's best.

Before you make a print a quick check is advised. A visual check is recommended to see if there is not any:

- old prints/objects on the build plate.
- make sure no one can possibly walk over, damage or pull out the power supply cable.

Updating firmware with USB cable

Once a while Cura will give you a mention that new firmware available. New firm-ware means that we have optimize the control of the electronics which will gives better print results and user experience. If you see this mention, connect the USB cable between your computer and your Ultimaker 2 and follow the instructions in Cura.

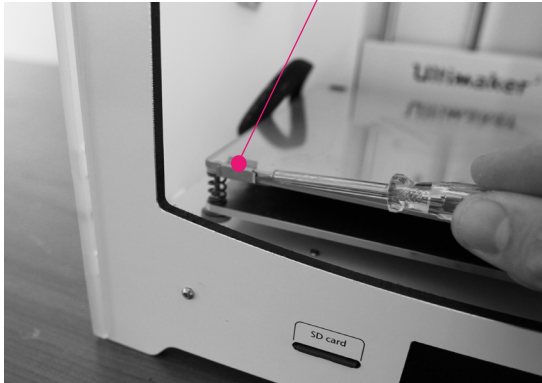


F2. The glass plate

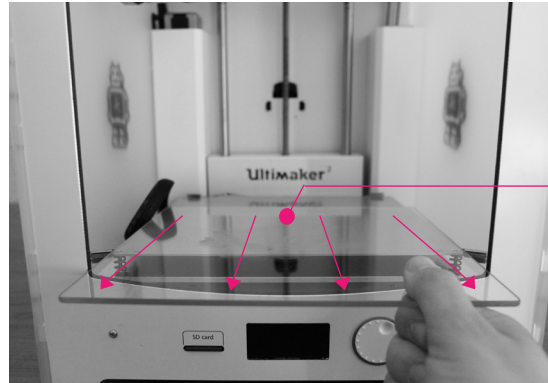
Cleaning the glass plate

After a lot of printing, there sometimes can be a little excess glue stuck to the glass build plate. This can cause an uneven print surface and it is recommended to clean it once in a while.

1. Make sure Ultimaker 2 power is powered off.
2. Carefully slide the front **glass clamps** and click them off carefully.



WARNING. Use a screwdriver for this step because the clamps can be sharp.



WARNING. Make sure you only take out the glass plate when it is cooled down.

3. Make sure the building plate is at the bottom of your Ultimaker 2, this is to prevent you not damage you printhead or Z- axis.
4. Now you continue to **slide the glass plate of the build plate to the front** and take it out.
5. To dissolve and clean off the excess glue, place the glass plate carefully under normal tap water and brush off the material.

WARNING. The glass plate is positioned on top of an electrical heating area so make sure it's dry.

6. Put it back in and slide the glass clamps back in the original position.

Note. To be sure that your next print will be succesfull you might want to level your build plate. You can do this under [maintenance].



F3. Cleaning the material feeder

Removing filament

In the Ultimaker 2 the filament material can be changed. As you have learned in previous steps there is no need to do this all by yourself because the Ultimaker 2 helps you with that.

1. Go to the [MATERIAL] tab on the main menu of the display. Press the button: next go to [CHANGE], this can be done by turning the wheel next to the screen. Press the button.

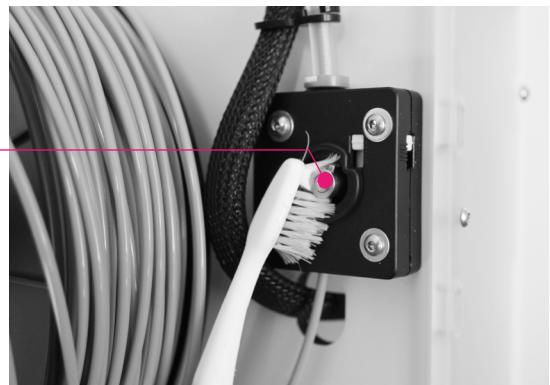
Note: firmware updates in the future may use a different terminology.

2. Your Ultimaker 2 will heat up so the material can be removed later. When the required temperature is met, the feeder will turn by itself and retract the filament.

3. Rewind the filament on the filament spool and make sure it cannot uncoil at a later moment (secure with hole in spool, tape or anything that works).

Clean material feeder

After a lot of printing, the wheel in the material feeder can accumulate small plastic particles. You can clean this by blowing air on the wheel or using **a simple brush**.



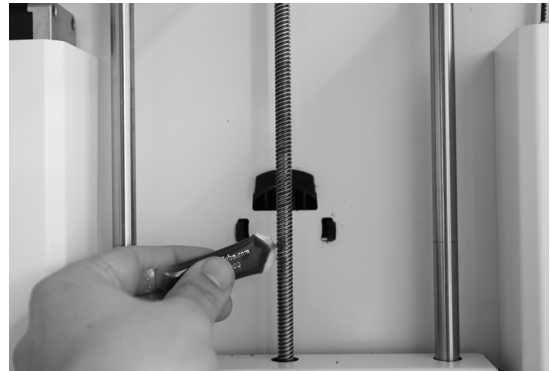
F4. Lubricating the axes

Z-Axes

After approximately every half year the threaded rod on the z-stage has to be lubricated. A green grease (Magnalube-G) is included with the Ultimaker 2. This grease is the lubrication which has to be used on the threaded Z-stage rod.

Note: the green grease should be applied as is shown in the photograph.

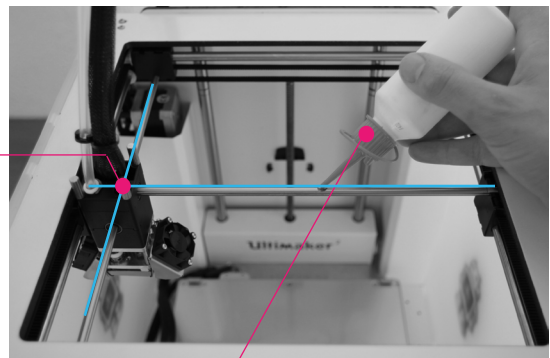
Make sure you spread 10 drops of grease over the entire exposed threaded rod. With your next print on the Ultimaker 2 the Thread will grease itself by moving up and down.



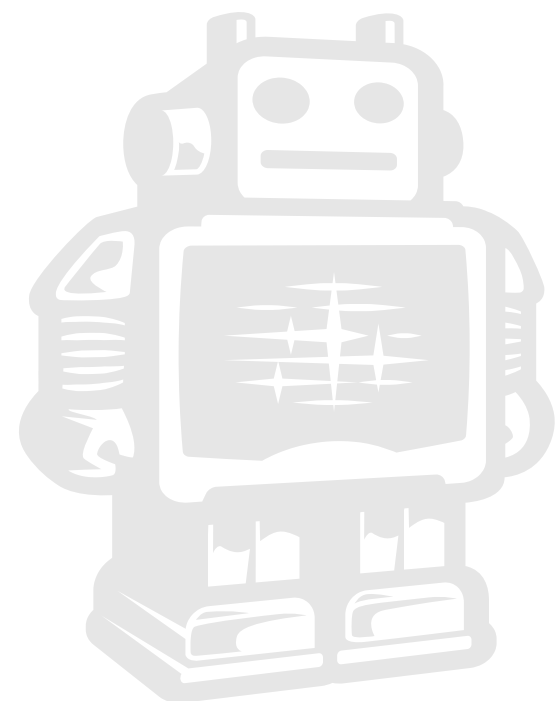
X-Y-Axes

If you notice small wavers in the outside surfaces of your 3D printed objects. It is recommended to add a single drop of sewing machine oil onto the **X and Y steel axes bars**. This will improve the smooth movement of your Ultimaker 2. This lubrication is **not included** in the Ultimaker 2 package.

If you choose to lubricate the X- and Y-axes you **MUST use sewing machine oil**. Apply a maximum of one droplet oil on the axis. Remove any excess oil.



TROUBLEHOOTING AND SUPPORT FOR THE **ULTIMAKER 2**



G1. Simple Troubleshooting tips

In case something goes wrong with your Ultimaker 2, the following chapter will help you. From diagnosing and fixing the problem yourself to contacting support.

Print detaches during printing or print does not stick at all.

Cause

Build plate is not properly leveled.

Solution

Follow the instructions under [MAINTENANCE] and then [BUILD-PLATE]

Second cause

Material is not adhering to the build plate.

Solution

Using a thin layer of the supplied glue-stick as discussed in chapter D4.



Print is stuck on the build plate.

Cause

Object is stuck on the build plate, even after soaking in water. PLA or ABS has bonded with the glass.

Solution

Use a spatula or another thin object such as a wedge between the glass and the object. Slowly push the wedge under the object from different directions. If the object will not release from the build plate try slightly tapping the wedge.



Caution: be very careful when using a sharp tool to remove objects.

Material feeder ticks when loading new material.

Cause

Material has reached the nozzle and is exiting the nozzle, the feeder cannot keep up with the flow.

Solution

While loading new material it is normal for the feeder to tick, the feeder is designed to tick backwards instead of grinding the material.



G1. Simple Troubleshooting tips (continued)

Not enough material is released from the nozzle.

Cause

Material feeder on the back of the Ultimaker 2 is ticking while printing. Nozzle is blocked or partially blocked by dirt or burned material.

Solution

Increasing the print temperature to 260C while printing in an attempt to clear the blockage. If the blockage is removed keep printing at 260C for at least 10 minutes to clean out any residue.

Second cause

Printing at 260C does not solve the blockage.

Solution

Something larger than 0.4mm could be blocking the nozzle. Cleaning the nozzle or replacing it is recommended. Contact support: support@ultimaker.com who will assist in fixing your Ultimaker 2.

Material flow stops and material is ground down by the feeder.

Cause

Nozzle could be blocked or partially blocked.

Solution

See “Not enough material is released from the nozzle.” for causes and solutions.

Second cause

Too much pressure is put on the material by the feeder.

Solution

Release the pressure on the feeder a bit by adjusting the build plate screw clockwise.

Third cause

Too little pressure is put on the material by the feeder, causing the material to slip.

Solution

Put more pressure on the feeder a bit by adjusting the pressure screw counter clockwise.

Ultimaker 2 display only shows “ERROR - STOPPED”, “Temp Sensor”

Cause

A problem with the temperature measurement has been detected, the printer has been switched off for safety reasons.

Solution

It indicates an electronics problem. Contact support: support@ultimaker.com who will assist in fixing your Ultimaker 2.



G2. Contact support

In case you run into difficulty not addressed in this manual, please feel free to contact our support staff through email, phone and of course our support ticket system.

See www.ultimaker.com/pages/support for details.

There is also a wealth of information, tips and amazing Ultimaker printed objects on our busy online forum community. These forums can be reached online at

<http://umforum.ultimaker.com/>

Drop by and say hello !

If you need any help resolving an issue you can always email our support department at:

support@ultimaker.com



G3. Terminology

ABS filament: This is a well-known plastic known for its strength and industrial properties.

Active cooling fan: The fan that cools the print head as it is printing.

Build plate: The frame that supports the glass print plate.

Cura: Open Source Software that allows you to turn your 3D model into a printable file.

Display: The OLED display provides the menu for controlling the Ultimaker 2.

Filament guide tube: The plastic tube that guides the filament from the material feeder to the print head.

Firmware: The software that runs on the electronic board.

Gantry: The construction of metal rods that allow movements on the x- y- and z-axis.

G-code: The code that comes out of the slicing process of a 3D model in Cura. It describes the movements of your print head.

Glue: The glue can be used as an adhesive between your build plate and your model.

Knurled wheel: Gives grip to push the filament in the filament guide tube.

LED strip: It is a strip which contains several small lights (Light Emitting Diodes) to light the Ultimaker 2.

Material feeder: The feeder that drives the filament through the filament guide tube into the heater.

Material feeder tensioner: The tension with which the filament is pushed through material feeder can be adjusted by tuning this tensioner.

Nozzle: The opening at the end of the print head. The filament is being pushed through the opening and will put down on your build plate.

PLA filament: This is a hard bioplastic that has a low environmental impact. It is derived from renewable, starch-based resources. It has a very low shrinkage which is helpful for great prints.

Build plate screws: These screws can adjust the leveling of the build plate.

Power supply: The A/C power supply. It consists of a block and a power cable. The cable can have different power plugs (US, EU,AU,UK). It depends on what kind of electric outlet is used in a country.

Power switch: Turns the Ultimaker on or off.

Print head: The assembly that melts the filament and pushes it through the nozzle onto the build plate.

Print head fans: The fans which cool the filament as soon as it is put onto the build plate.

Push button: By rotating and pushing the button in front of the Ultimaker 2, you can access the control panel.

SD-card: Secure Digital memory card that can store digital data. The card that can be used with the Ultimaker has to be an SD-card and not an SDHC card. It has to be formatted with FAT16 or FAT32 with a maximum capacity of 2GB.

Slicing: The process that turns a 3D model into code that can be used with 3D printers.

Slider blocks: The slider blocks maintain the connection between the gantry axes.

Spool holder: The plastic piece attached to the back of the Ultimaker 2. It can hold different kinds of filament spools.

.stl: A widely used file format for 3D models.

Threaded rod: The long rod behind the build plate which is threaded. This rod makes the build move up and down.

USB cable: The cable that allows direct communication between the Ultimaker and a computer, using the USB interface on the computer.

YouMagine.com: A website where you can share your models and download (3D) models from the people within the youmagine community.



G4. Safety and Compliance

Warning

This is a class A product. In a domestic environment this product may cause radio interference in which case the user may be required to take adequate measures.



TERMS OF SERVICE 1/2

Returning Purchased Items. ** LIMITED **

Ultimaker accepts returns on a very limited basis: for any electronic items, the Company accepts returns only on unaffected devices within **14** calendar days from the date of receipt of merchandise. “Unaffected” means a device has never been assembled, powered up, programmed, or otherwise changed. Similarly, for non-electronic items, the Company accepts returns only on unopened items within 14 calendar days from the date of receipt of merchandise. After 14 days, all sales are considered final.

WarrantyLIMITED****

Ultimaker products are warranted only to the original purchaser for a period of **three months** from the original purchase date, under normal use and service, against defective workmanship and material.

This warranty is void if the product has been damaged by accident or unreasonable use, immersion in water, neglect, abuse, battery leakage or improper installation, improper service, or other causes not arising out of defects in workmanship or materials of the product. All warranty claims are subject to:

Ultimaker being notified of the warranty claim within the warranty period
Ultimaker verifying the existence of a defect in the product
Receipt of valid proof of your purchase date.

Note: Please make sure that you have a valid proof of purchase (Receipt) before contacting Customer Service.

In the event that you experience any problems with your Ultimaker product and before returning a product for any reason, it is necessary to contact the Ultimaker Support team to determine and diagnose the issues you are experiencing prior to taking any other course of action. To communicate with Ultimaker Support, you can open a support ticket at: <https://www.ultimaker.com/pages/support> or email support@ultimaker.com. If the service representative is unable to solve the problem, you will be provided with instructions as to how to go about having the unit repaired or replaced if it is under warranty. Return of a product under warranty is governed by the following rules -- you must return your product, shipping prepaid and with proof of purchase date, as instructed by a Ultimaker service representative.



TERMS OF SERVICE 2/2

In the event that a product under warranty is repaired or replaced, the replacement will be covered under the original warranty or for 30 days, whichever is longer. Repair or replacement is your exclusive remedy, and Ultimaker's exclusive liability, under this warranty.

Replacement may consist of replacing the product with the same product or with a different product of the same value. Ultimaker shall not be liable for any incidental or consequential damages for the breach of any warranty on this product. Any implied warranty of merchantability or fitness for a particular purpose on this product is limited to the duration of this warranty.



