



ZERODE



Taniwha

**USER
MANUAL**

Congratulations!

On purchasing your own Taniwha and joining the shift to a better riding experience. We have no doubt this bike will give you as much fun and enjoyment as it has given us.

We have had a vision for what we wanted this bike to be since first throwing a leg over a MTB in 1992. Advances in materials and manufacturing have finally allowed us to fully deliver on this vision and present to you, the Taniwha.

Building on early DH race origins and adding modern carbon fabrication, it is a quiet, low-maintenance Enduro or Trail bike that in essence just makes the riding experience better. The Taniwha is ready to race at the highest level, to take on epic back country adventures or just to put a smile on your face on the long way home from work. Just make sure you get out and ride it.

FRAME SPECIFICATIONS

Frame material: Carbon Fibre
Wheel size: 27.5"
Internal cable routing for dropper post & Pinion gearbox

COMPONENT SPECIFICATIONS

Seatpost: 31.6mm
Seatpost clamp: 34.9mm
Headset: 44mm top/56mm bottom
Brake mount: 160mm IS
Drive train: Pinion gearbox
Rear hub: 142mm x 12mm [single speed]

WARRANTY

The Zerode Taniwha frames are warranted against manufacturing defects in materials and/or workmanship for three years from the date of original purchase. This limited warranty applies only to the original owner of a Zerode Taniwha and is not transferable to subsequent owners. This limited warranty is void if the bicycle is subjected to abuse, neglect, improper repair, improper maintenance, alteration, modification, an accident or other abnormal, excessive, or improper use.

MAINTENANCE & INSPECTION

It is important to properly maintain and inspect your ZERODE Taniwha.

Before any ride you should inspect the entire frame for cracks, loose pivots or bolts, and properly functioning bearings. In addition to your pre ride frame check your entire bike should be checked prior to each ride.

Always inspect your frame in full after a crash. If you discover damage to any degree have your frame inspected by a qualified ZERODE dealer.

SUSPENSION

TANIWHA

Travel: 160mm
Rear shock: 216mm eye to eye x 63mm stroke
Hardware: 22.2mm x 8mm reducers

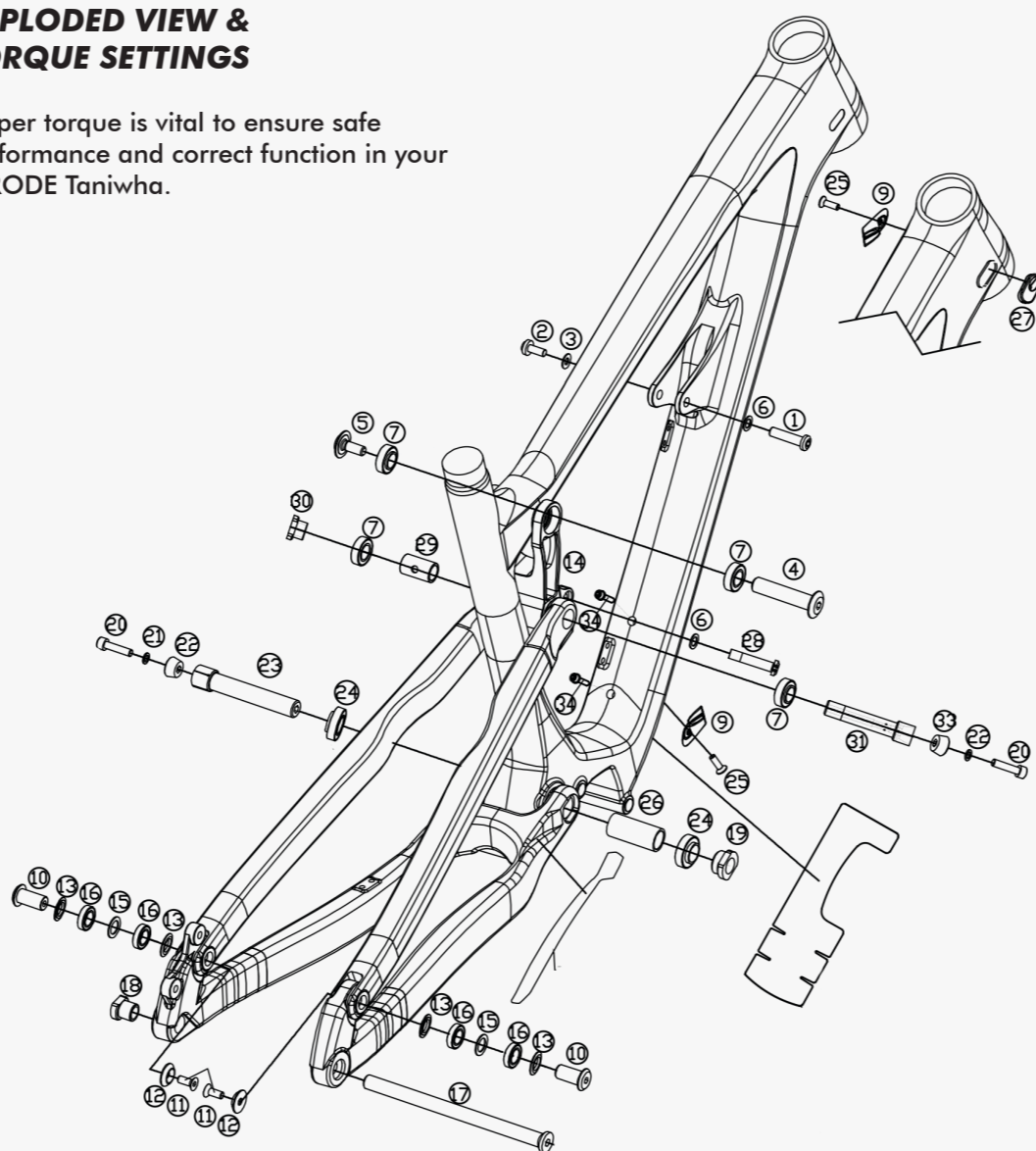
TANIWHA TRAIL

Travel: 140mm
Rear shock: 210mm eye to eye x 55mm stroke
Hardware: 22.2mm x 8mm reducers



EXPLODED VIEW & TORQUE SETTINGS

Proper torque is vital to ensure safe performance and correct function in your ZERODE Taniwha.



Item #	Description	QTY	Torque	Item #	Description	QTY	Torque
1	Shock eye shaft front triangle	1		16	Pivot bearing rear triangle	4	
2	Shock eye bolt front triangle	1	8.5	17	Wheel axle	1	
3	Shock eye washer bolt front triangle	1		18	Wheel axle nut	1	
4	Link pivot shaft front triangle	1		19	Main pivot shaft nut	1	
4	Link pivot bolt front triangle	1	11.5	20	Wedge bolt	2	8.5
6	Shock eye shaft washer	2		21	Main pivot wedge washer	1	
7	Link bearing	4		22	Wedge	2	
9	Internal routing cap	2		23	Main pivot shaft	1	25
10	Pivot shaft rear triangle	2		24	Main pivot bearing	2	
11	Pivot bolt rear triangle	2	8.5	25	Internal routing cap bolt	2	
12	Pivot washer rear triangle	2		26	Main pivot bearing spacer	1	
13	Pivot inner washer rear triangle	4		27	Grommet	1	
14	Link	1		28	Shock eye bolt link	1	11.5
15	Pivot spacer rear triangle	2		29	Link bearing spacer	1	
				30	Link pivot shaft nut	1	
				31	Link pivot shaft	1	22
				33	Link pivot shaft wedge	1	
				34	Drink bottle cage bolt	2	

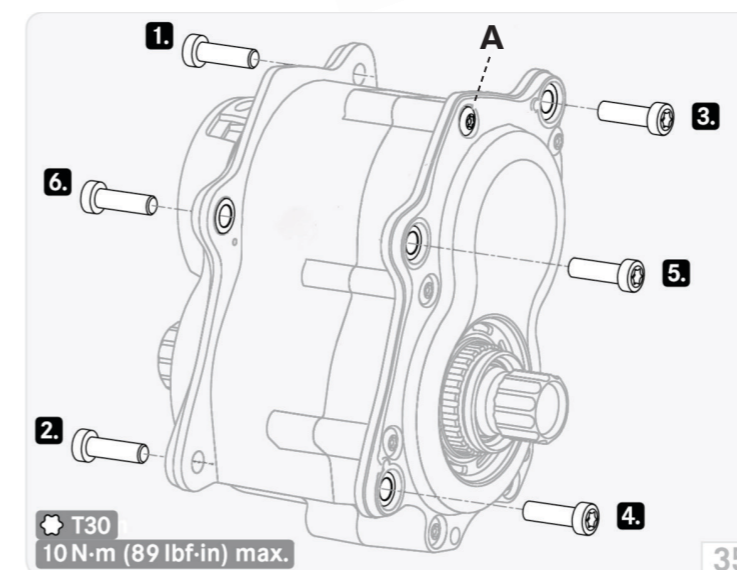
PINION GEARBOX

Complete service and setup videos for the Pinion gearbox are provided at <http://pinion.eu/en/service-videos/>

We strongly recommend that you consult these videos when setting up and maintaining your Pinion Gearbox.

Gearboxes offer many advantages over traditional drive trains - less wear and tear, less maintenance and better suspension performance - however, you will need to make some small adjustments to get the best of what the Pinion gearbox has to offer. The most important difference is that you cannot shift under load. For first-time users this may feel a little unusual however the shift is almost instantaneous and pedaling is not required to change gear. With a little practice eliminating load from the pedals will become second nature allowing seamless shifting through the gear range in situations not possible with a derailleur.

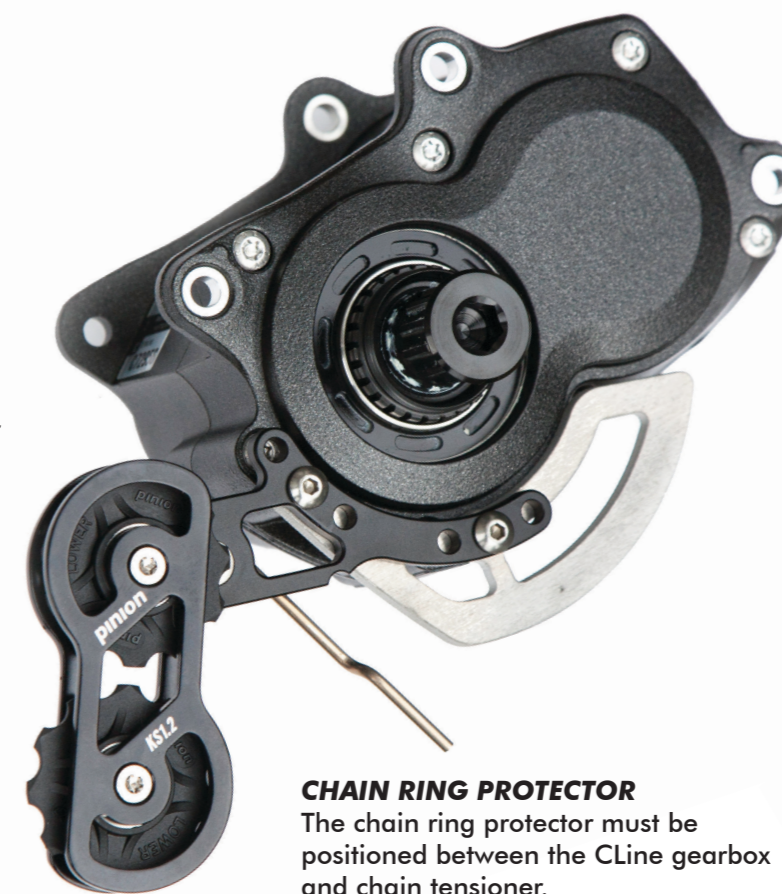
There is no going back once you are familiar with the Pinion.



SHOCK SET UP

Your ZERODE Taniwha suspension should be set up to maximise small bump sensitivity while providing adequate bottom out resistance for big hits. A starting point to achieve this should be 30 - 35% sag.

Rebound and compression settings should be adjusted to suit your personal riding style, terrain and preferences. Consult your shock manual about how to make these adjustments.



CHAIN RING PROTECTOR

The chain ring protector must be positioned between the CLine gearbox and chain tensioner.

GEARBOX INSTALLATION

Make sure that all contact points between the gearbox and gearbox interface of the bicycle frame are clean and coated with carbon assembly paste.

The gearbox retaining screws are allowed to be reused - providing they have been cleaned and have fresh screw lock (medium-strength) applied to them.

Position gearbox in the gearbox interface of the bicycle frame. Install all retaining screws. Tighten retaining screws in the specified sequence in the diagram right. Tighten with a torque of 10 N•m. The installation of the gearbox is complete.

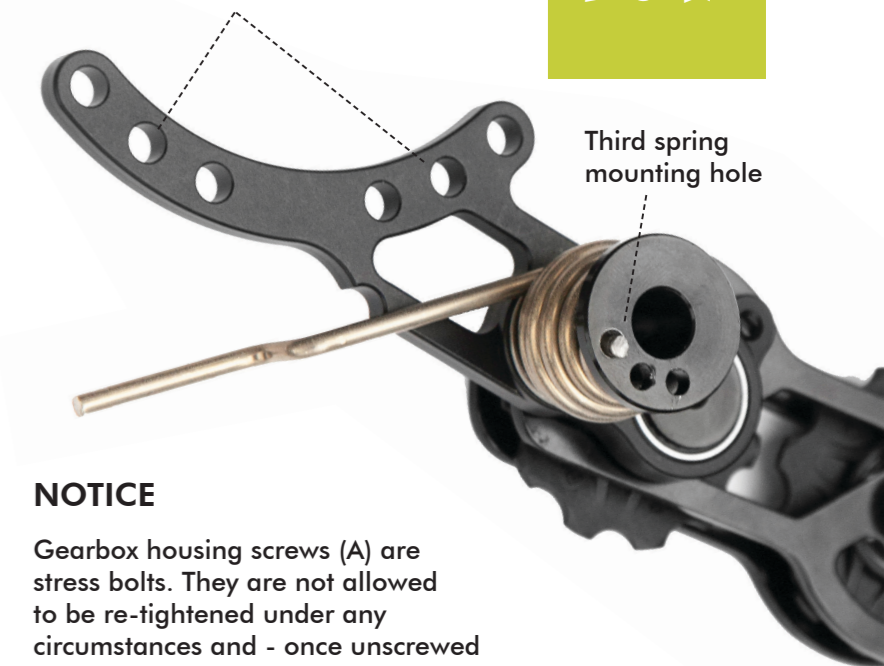
CHAIN LINKS

To function properly, the Taniwha must have a chain with 104 links.

CHAIN TENSIONER

The Pinion chain tensioner requires a small modification from factory because of the gearbox orientation in the Taniwha frame. A third spring mounting hole is drilled into the spring mount and must be used for correct chain tension and retention.

Mount the chain tensioner to the gearbox using the middle mounting holes on the tensioner.



NOTICE

Gearbox housing screws (A) are stress bolts. They are not allowed to be re-tightened under any circumstances and - once unscrewed - must be replaced by new ones! (fig. 35) Stainless steel screws will cause corrosion on the gearbox housing.

Thank you

We are a small team that loves what we do and buy purchasing this bike it means we can keep doing just that. So we would like to say thanks to you!

That's enough reading, now it's time to get out there and ride your Taniwha! We hope it puts a smile of your face everytime you ride. Happy trails!

From the small team at

ZERODE

DON'T FORGET TO HAVE FUN !



WARNING
Once you use the Pinion gearbox, you will never go back.