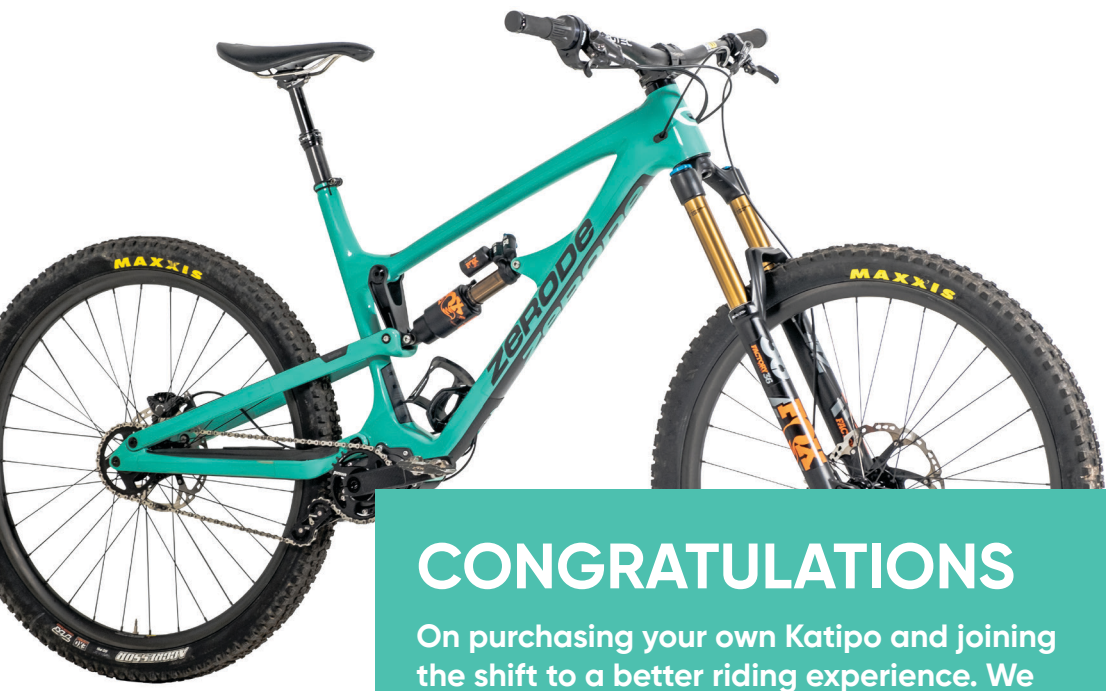


**Katipo** 



**ZERODE**





## USER MANUAL



# Katipo

## CONGRATULATIONS

On purchasing your own Katipo and joining the shift to a better riding experience. We have no doubt this bike will give you as much fun and enjoyment as it has given us.

We have had a vision for what we wanted a mountain bike to be since first throwing a leg over a one in 1992. After advances in materials and manufacturing allowed us to deliver the Taniwha, we have now expanded our line up with the ultra capable Katipo.

Like all Zerode bikes, we designed the Katipo with the best possible riding experience in mind. It's made to inspire you with confidence and have you ride your absolute best. Whether you race at the highest level, search out the most epic back country adventures or just blast the local trails, the Katipo has your back and will leave you with a smile after every ride.

Just make sure you get out and ride it.

### FRAME SPECIFICATIONS

Frame material: Carbon Fibre  
 Wheel size: 29"  
 Internal cable routing for dropper post & Pinion gearbox

### COMPONENT SPECIFICATIONS

Seatpost: 31.6mm  
 Seatpost clamp: 34.9mm  
 Headset: 44mm top/56mm bottom  
 Brake mount: 160mm Post  
 Drive train: Pinion gearbox  
 Rear hub: 142mm x 12mm [single speed]

### WARRANTY

The Zerode Katipo frames are warranted against manufacturing defects in materials and/or workmanship for three years from the date of original purchase. This limited warranty applies only to the original owner of a Zerode Katipo and is not transferable to subsequent owners. This limited warranty is void if the bicycle is subjected to abuse, neglect, improper repair, improper maintenance, alteration, modification, an accident or other abnormal, excessive, or improper use.

### MAINTENANCE & INSPECTION

It is important to properly maintain and inspect your ZERODE Katipo.

Before any ride you should inspect the entire frame for cracks, loose pivots or bolts, and properly functioning bearings. In addition to your pre ride frame check your entire bike should be checked prior to each ride.

Always inspect your frame in full after a crash. If you discover damage to any degree have your frame inspected by a qualified ZERODE dealer.

### SUSPENSION

#### KATIPO

Travel: 160mm  
 Rear shock: 230mm eye to eye x 65mm stroke  
 Hardware: 22.2mm x 8mm reducers

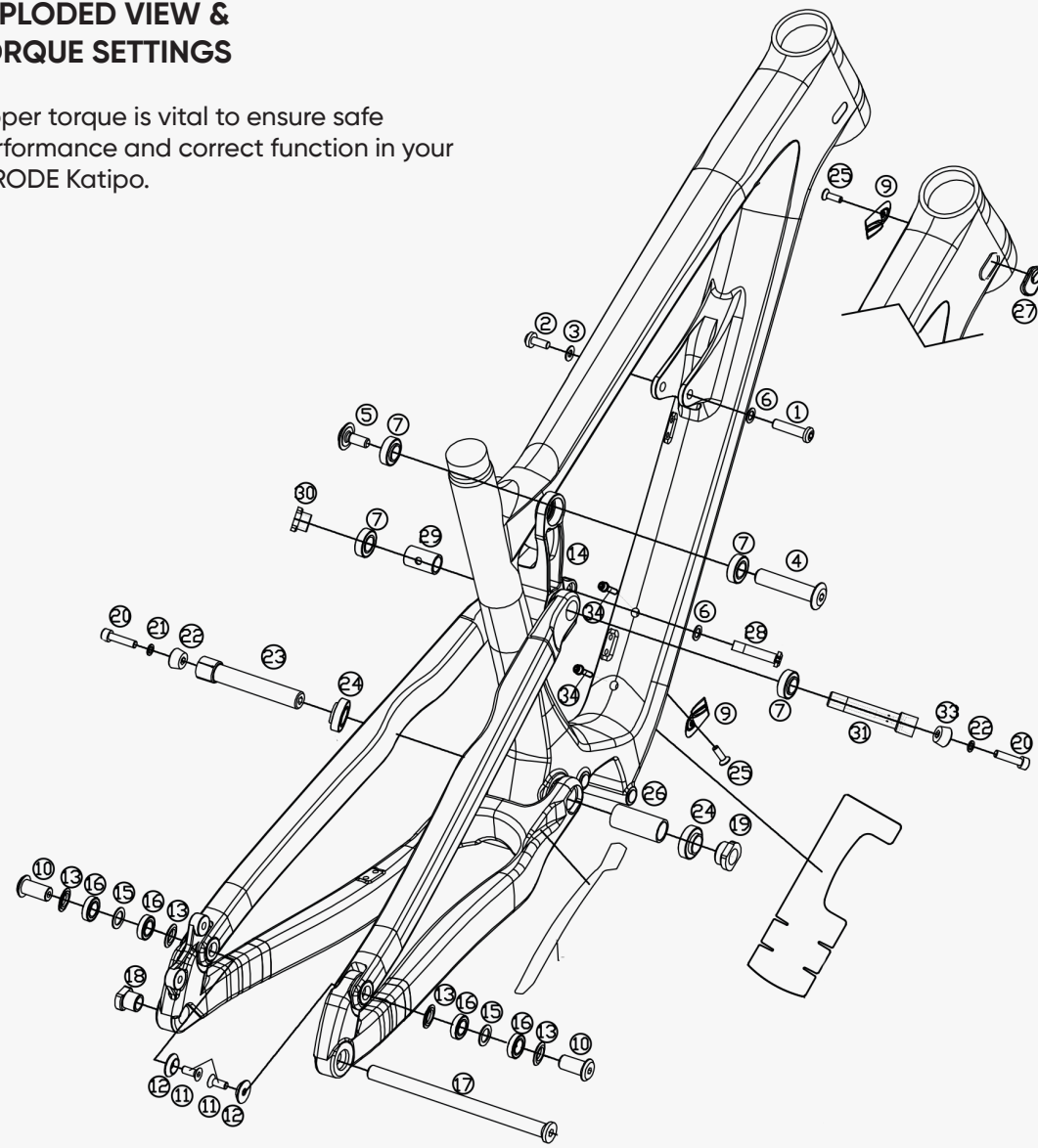
#### KATIPO TRAIL

Travel: 140mm  
 Rear shock: 230mm eye to eye x 60mm stroke  
 Hardware: 22.2mm x 8mm reducers



### EXPLODED VIEW & TORQUE SETTINGS

Proper torque is vital to ensure safe performance and correct function in your ZERODE Katipo.



Item #	Description	QTY	Torque	Item #	Description	QTY	Torque
1	Shock eye shaft front triangle	1		16	Pivot bearing rear triangle	4	
2	Shock eye bolt front triangle	1	8.5	17	Wheel axle	1	
3	Shock eye washer bolt front triangle	1		18	Wheel axle nut	1	
4	Link pivot shaft front triangle	1		19	Main pivot shaft nut	1	
4	Link pivot bolt front triangle	1	11.5	20	Wedge bolt	2	8.5
6	Shock eye shaft washer	2		21	Main pivot wedge washer	1	
7	Link bearing	4		22	Wedge	2	
9	Internal routing cap	2		23	Main pivot shaft	1	25
10	Pivot shaft rear triangle	2		24	Main pivot bearing	2	
11	Pivot bolt rear triangle	2	8.5	25	Internal routing cap bolt	2	
12	Pivot washer rear triangle	2		26	Main pivot bearing spacer	1	
13	Pivot inner washer rear triangle	4		27	Grommet	1	
14	Link	1		28	Shock eye bolt link	1	11.5
15	Pivot spacer rear triangle	2		29	Link bearing spacer	1	
				30	Link pivot shaft nut	1	
				31	Link pivot shaft	1	22
				33	Link pivot shaft wedge	1	
				34	Drink bottle cage bolt	2	

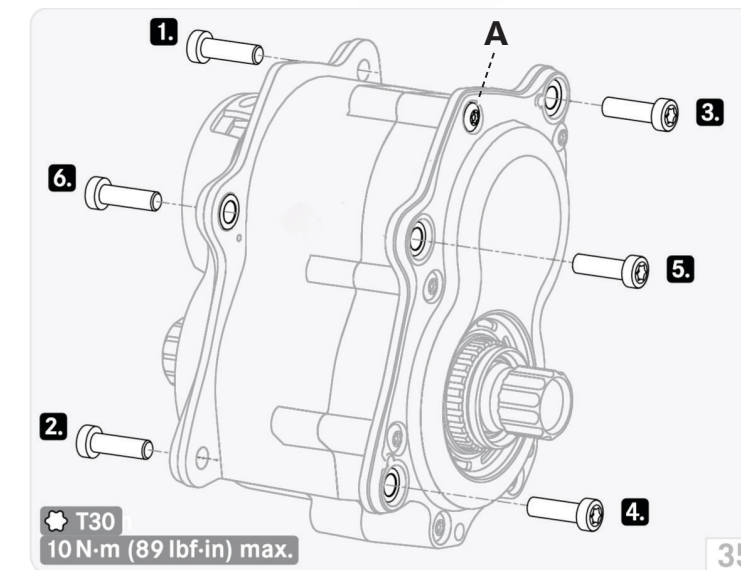
### PINION GEARBOX

Complete service and setup videos for the Pinion gearbox are provided at <http://pinion.eu/en/service-videos/>

We strongly recommend that you consult these videos when setting up and maintaining your Pinion Gearbox.

Gearboxes offer many advantages over traditional drive trains - less wear and tear, less maintenance and better suspension performance - however, you will need to make some small adjustments to get the best of what the Pinion gearbox has to offer. The most important difference is that you cannot shift under load. For first-time users this may feel a little unusual however the shift is almost instantaneous and pedaling is not required to change gear. With a little practice eliminating load from the pedals will become second nature allowing seamless shifting through the gear range in situations not possible with a derailleur.

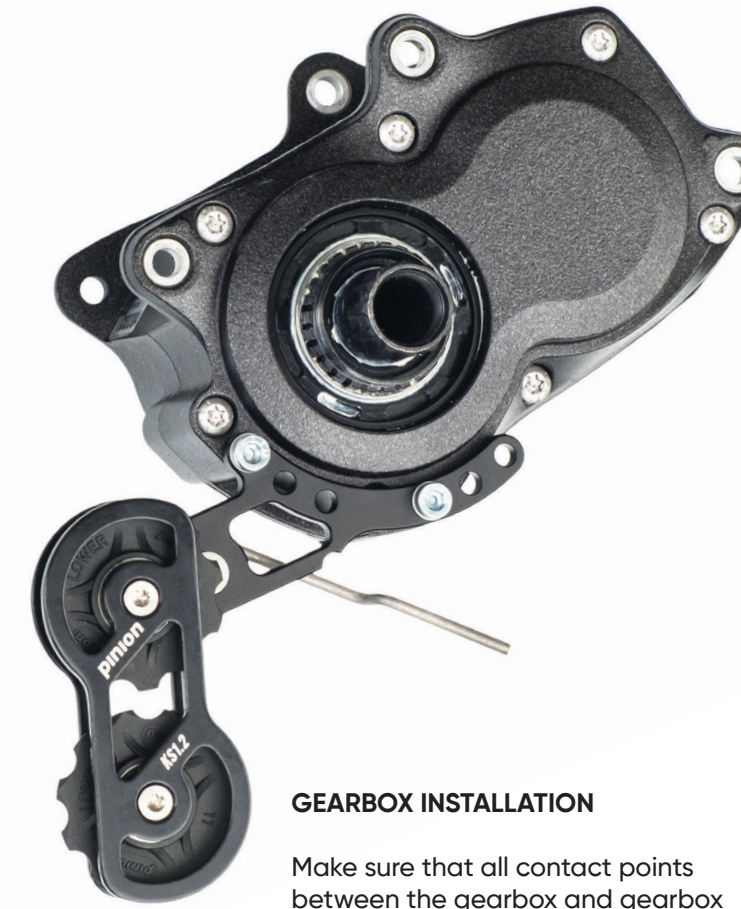
There is no going back once you are familiar with the Pinion.



### SHOCK SET UP

Your ZERODE Katipo suspension should be set up to maximise small bump sensitivity while providing adequate bottom out resistance for big hits. A starting point to achieve this should be 30 - 35% sag.

Rebound and compression settings should be adjusted to suit your personal riding style, terrain and preferences. Consult your shock manual about how to make these adjustments.



### GEARBOX INSTALLATION

Make sure that all contact points between the gearbox and gearbox interface of the bicycle frame are clean and coated with carbon assembly paste.

The gearbox retaining screws are allowed to be reused - providing they have been cleaned and have fresh screw lock (medium-strength) applied to them.

Position gearbox in the gearbox interface of the bicycle frame. Install all retaining screws. Tighten retaining screws in the specified sequence in the diagram left. Tighten with a torque of 10 N·m. The installation of the gearbox is complete.

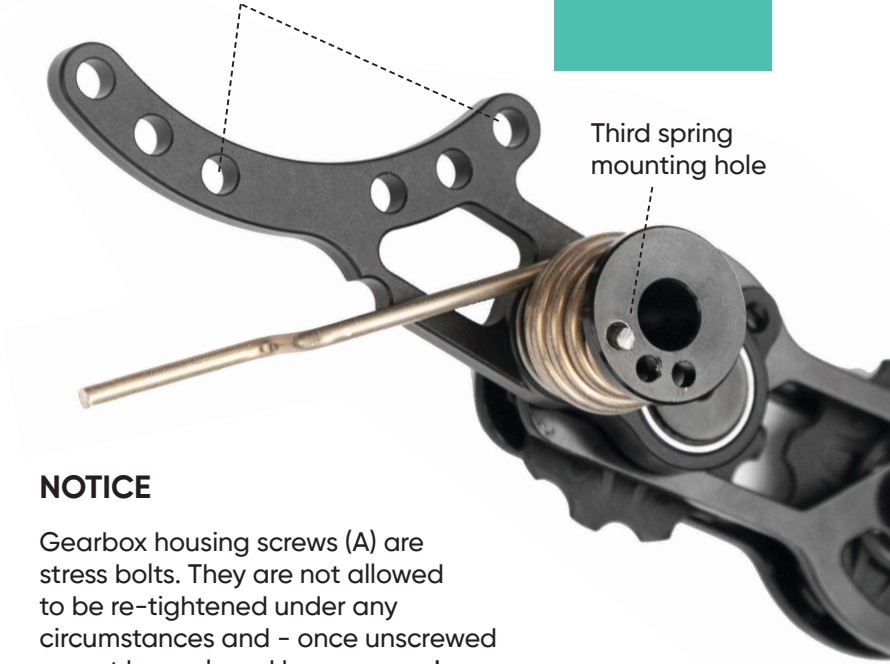
### CHAIN LINKS

To function properly, the Katipo must have a chain with 106 links.

### CHAIN TENSIONER

The Pinion chain tensioner requires a small modification from factory because of the gearbox orientation in the Katipo frame. A third spring mounting hole is drilled into the spring mount and must be used for correct chain tension and retention.

Mount the chain tensioner to the gearbox using the last mounting holes on the tensioner.



### NOTICE

Gearbox housing screws (A) are stress bolts. They are not allowed to be re-tightened under any circumstances and - once unscrewed - must be replaced by new ones! (fig. 35) Stainless steel screws will cause corrosion on the gearbox housing.

### Thank you

We are a small team that loves what we do and buy purchasing this bike it means we can keep doing just that. So we would like to say thanks to you!

That's enough reading, now it's time to get out there and ride your Katipo! We hope you love it as much as we do, happy trails!

From the small team at



DON'T FORGET TO HAVE FUN!



WARNING  
Once you use the Pinion gearbox, you will never go back.