



SCABAL

AW23 COLLECTION



SCABAL



AUTUMN / WINTER 2023

Jacket

Model – Kenton

AUTUMN
LEAVES
853389



Jacket

Model – Kenton

Casual Woven
Trousers

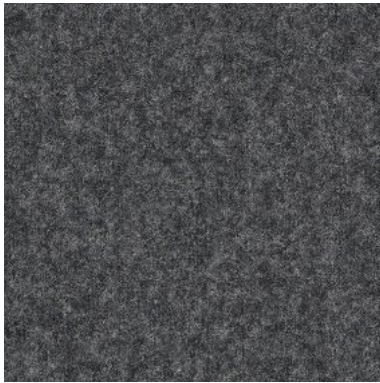
MAGUS
501722



Trousers

Model – W700

FLANNEL
& SAXONY
705885



AUTUMN LEAVES

As its name suggests, Autumn leaves is designed with the colours of fall in mind. Divided into two chapters the first is a soft wool with added cashmere and the second is 100% extra fine Merino wool, both qualities are woven in a seasonal 320gm weight to give the additional warmth needed in the colder months.

The collection opens with a selection of bold checks with a bright red leading the way, it moves through a range of fancy checks each one with an individual feel and closes with a dramatic selection of plains with a distinctive light and dark twisted yarn effect which adds depth and character.

Colour are wide and varied, reds, browns, greens, burgundy, rust, a selection of blues, greys and winter whites all feature with many designs including multiple colour combinations.

MAGUS

The new Magus collection builds on the success of its predecessor Wizard, to present a winter selection of luxury suiting fabrics combining Super 160's wool with a natural stretch created purely by the skill of the weavers at the mill.

This considered collection of 14 articles has a soft milled finish and is perfect to add warmth and softness during the colder months. When combined with the superior wool, the stretch characteristics create fabrics that are ideal for the daily requirements of contemporary garments.

The fabrics colours are plain but essential, ranging from a light cream through soft greys, warm camels, a selection of blues and even a pure black.

PRODUCT DETAILS

Knitwear:

- Drumberg – 001_810
Light Camel

Knitwear:

- Telford – 006_001
Off White



SCABAL



AUTUMN / WINTER 2023

Jacket

Model – Chelsea

Trouser

Model – V710

MAGUS

501721



Outerwear

Model – Overcoat

ZEUS

853351

Trouser

Model – W725

FLANNEL

& SAXONY

705882



CHELSEA

Scabal continues to evolve its tailoring collections with the introduction of the Chelsea shirt jacket. Designed to be a hybrid with the look of a jacket but with the lightness and comfort of wearing a shirt. It gives the wearer the opportunity to create different looks by changing, how it is worn and what it is worn with. It is also available as made to measure in a wide selection of Scabal fabrics.

The design is simple and elegant with the sartorial features that you expect from Scabal, unlined to add to the soft feel, stylish patch pockets on the front but the clever construction allows for a useful hidden pocket on the inside as well.

This is a truly versatile garment, wear it open with a lightweight knit or t shirt underneath for a casual look or worn closed with a tonal turtle neck and matching trousers to project a more considered style.

PRODUCT DETAILS

Knitwear:

- Telford – 006_001
Off White

Knitwear:

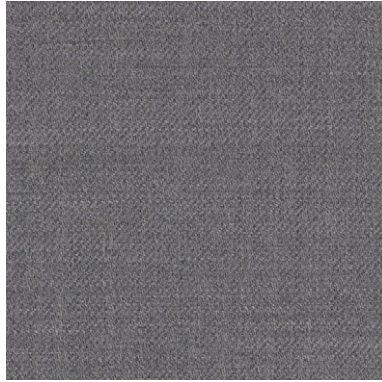
- Banbury-128-001
Off White



Suit

Model – Kenton
Light

CHAMPION
754811



Outerwear

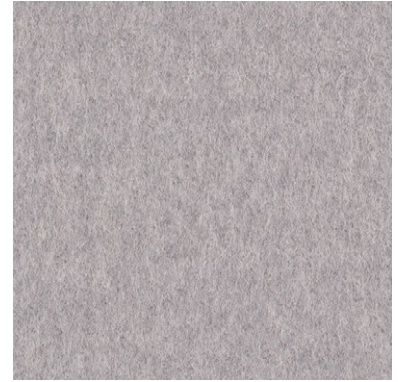
Model – Nelson 3

ZEUS
853352

Casual Woven
Trousers

Model – Perth

FLANNEL
& SAXONY
705884



KENTON LIGHT

The Kenton model was always designed to be lightweight and comfortable with its unconstructed and unlined characteristics but now it has evolved even further with the introduction of the new Kenton Light. This jacket takes comfort to the next level.

Our design team studied the Kenton in detail trying to find ways to reduce the weight and thickness of the garment with the objective of creating a jacket that feels like you are not wearing it. The original interlining was removed along with the distinctive butterfly shoulder lining. In its place expert craftsmanship has produced a jacket with a superior internal construction which itself acts as the frame of the jacket. External Patch pockets are cleverly designed to host internal pockets eliminating the need for the traditional chest pockets and adding a pocket that won't hang or drag down the line of the jacket.

NELSON 3

A traditional peacoat ideal for relaxed casual wear, unconstructed and unlined it is designed for city life to fulfil the constant need for adaptable clothes, a simple top layer that can be combined with warm knits or gilets to create a more robust winter outfit or worn with a light jersey or shirt in the transitional months.

PRODUCT DETAILS

Knitwear:

- Telford – 006_134
Mid Grey Melange

Knitwear:

- Banbury – 145_136
Light Grey Mouline



Jacket

Model – Kenton
Light

AUTUMN
LEAVES
853384



Casual Woven
Trousers

Model – Perth

FLANNEL
& SAXONY
705883

Jacket

Model – Soho

AUTUMN
LEAVES
853385



Casual Woven
Trousers

Model – V700

FLANNEL
& SAXONY
705883

KENTON LIGHT

The Kenton model was always designed to be lightweight and comfortable with its unconstructed and unlined characteristics but now it has evolved even further with the introduction of the new Kenton Light. This jacket takes comfort to the next level.

Our design team studied the Kenton in detail trying to find ways to reduce the weight and thickness of the garment with the objective of creating a jacket that feels like you are not wearing it. The original interlining was removed along with the distinctive butterfly shoulder lining. In its place expert craftsmanship has produced a jacket with a superior internal construction which itself acts as the frame of the jacket. External Patch pockets are cleverly designed to host internal pockets eliminating the need for the traditional chest pockets and adding a pocket that won't hang or drag down the line of the jacket.

PRODUCT DETAILS

Knitwear:

- Drumberg – 001_001
Off White

Knitwear:

- Drumberg – 001_001
Off White



SCABAL



AUTUMN / WINTER 2023

Jacket

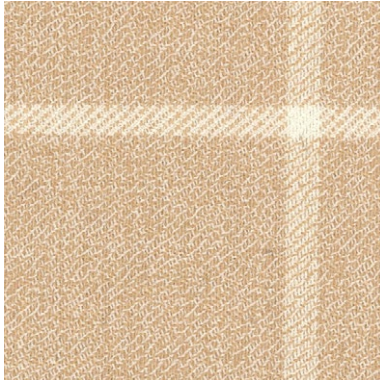
Model – Soho Blue
Line

AUTUMN
LEAVES
853392

Trouser

Model – G725

CORDUROY
501651



Outerwear

Model – Plymouth 1

Trouser

Model – V700

FLANNEL
& SAXONY
705897



PLYMOUTH 1

The Plymouth is an unlined overshirt. Designed as a fashion piece to be worn as an over layer combined with jersey or knitwear. It has a button front closure with two large flap pockets and 2 concealed side pockets. Create a more casual look by selecting a soft fabric from the Cashmere cotton collection or for a more luxurious summer feel select something from Nobility with its wool and silk combination. For season long winter elegance, choose from Sonata's soft herringbones or from a large choice in the Flannel & Saxony collection

AUTUMN LEAVES

As its name suggests, Autumn leaves is designed with the colours of fall in mind. Divided into two chapters the first is a soft wool with added cashmere and the second is 100% extra fine Merino wool, both qualities are woven in a seasonal 320gm weight to give the additional warmth needed in the colder months.

The collection opens with a selection of bold checks with a bright red leading the way, it moves through a range of fancy checks each one with an individual feel and closes with a dramatic selection of plains with a distinctive light and dark twisted yarn effect which adds depth and character.

Colour are wide and varied, reds, browns, greens, burgundy, rust, a selection of blues, greys and winter whites all feature with many designs including multiple colour combinations.

PRODUCT DETAILS

Formal Shirt:

· 300359

Knitwear:

· Telford – 006_803
Camel



SCABAL



AUTUMN / WINTER 2023

Outerwear

Model – Penrith 1

ZEUS
853352



Outerwear

Model – Bedford 1

ZEUS
853351



Trouser

Model – W710

FLANNEL
& SAXONY
705882

PENRITH 1

The perfect transeasonal piece, designed as an overcoat and styled as a jacket. The Penrith is a tailored silhouette available in a choice of heavier weight fabrics to give additional warmth in the winter months, it also has a collar that can be left open or closed giving the jacket 2 different looks and also added protection against the cold when needed.

BEDFORD 1

For the ultimate in winter wear Scabal have created this padded parka coat. It has a fur trim on the hood which can be removed, a hidden two way zip closure and a soft rib on the inside cuffs all designed to help keep the winter cold out. It is available in a wide choice of fabrics including some options that are exclusive to the Scabal Trend capsules and not available in any bunches.

PRODUCT DETAILS

Knitwear:

- Bakewell – 001_001
Off White

Knitted Trousers:

- Eton – 001_001
Off White

Knitwear:

- Crewe – 006_134
Mid Grey Melange



Outerwear

Model – Dartmoor 3

ZEUS
853361

Trouser

Model – W700

FLANNEL
& SAXONY
705898



Leather

Model – Truro –
142_032
Curly Shearling
Almond

Trouser

Denim

DARTMOOR 3

The Dartmoor jacket has a utility feel to it but with unmistakable Scabal touches that make it a wardrobe essential. Functionality is key, with 4 large front pockets, a detachable, hidden hood and a collar strap with snap button. For added comfort it has an inner drawstring waist and a shoulder pleat with an internal elastic band which provides flexible movement and ensures the jacket always keeps its shape. Now available in a selection of Scabal fabrics designed to give it a more sartorial look than the original Dartmoor.

ZEUS

This iconic overcoat collection returns this season refreshed with a wide selection of new colours, designs and patterns.

The collection opens with a selection of statement checks in a wool and cashmere combination, the designs are enhanced by the colour choices of winter white, soft brown and classic navy. Within the 100% wool selection there is a wide choice of more traditional overcoating patterns before the collection moves into an essential selection of plain colours in the heavier weight of 520gm.

The pinnacle of the collection is a large selection of luxury cashmere articles. Select a traditional finish or for the ultimate in luxury the fabrics with a stunning ripple finish.

PRODUCT DETAILS

Knitwear:

- Totnes – 145_022
Beige Melange

Casual Shirt:

- Casual Shirt – 117_027
Baby Corduroy

Knitwear:

- Harrow – 002_001
Off White



Leather

Model – Havant –
141_030 Shearling
Warm Beige

PRODUCT DETAILS

Knitwear:

· Bakewell – 003_146
Smoke Melange

Knitted Trousers:

· Eton – 003_146
Smoke Melange



SCABAL



AUTUMN / WINTER 2023

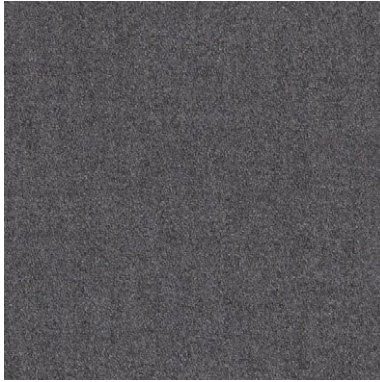
Jacket

Model – Soho
Blue Line

Trouser

Model – W700

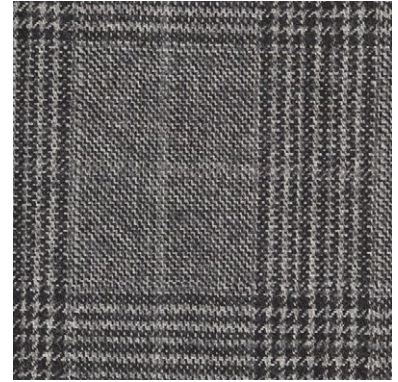
MIRACLE
754769



Jacket

Model – Soho
Blue Line With
Handmade Options

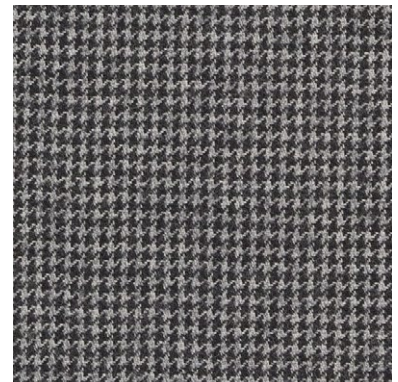
HYBRID
754823



Trouser

Model – V725

HYBRID
754824



MIRACLE

The Miracle collection is renewed this season with a new selection of fresh colours and designs.

This exquisite collection is made from a superior 100% Super 180's wool, and is hand-crafted in England using a 4ply, twill-based construction at a seasonal 300gm. The result is a beautifully soft cloth which is surprisingly robust, practical and easy to tailor.

Patterns are considered and subtle, soft checks, shadow stripes and pinstripes all feature in the traditional suiting shades of blues, greys and blacks.

HYBRID

The Hybrid concept continues to evolve this season becoming one of the most popular Scabal fabric concepts. Each design is created as a pair, the first a fancy design and its partner sharing the same colour base but with a more understated complementary look.

Create a suit from any fabric or a combination jacket and trouser for a more adaptable look. For the perfect working capsule, select 2 suits and then mix and match them to create endless different outfits.

PRODUCT DETAILS

Knitwear:

- Telford – 006_322
Carmine

Knitwear:

- Telford – 006_999
Black



SCABAL



AUTUMN / WINTER 2023

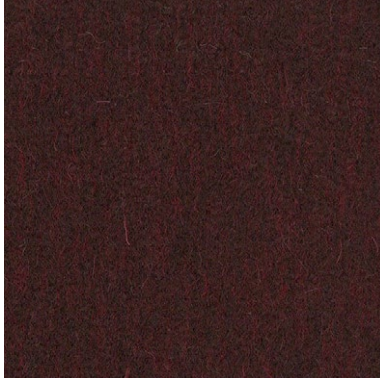
Outerwear

Model – Winchester

ZEUS
853369

Trouser

Black Denim



WINCHESTER

The Winchester overcoat has been designed to be worn over a suit but its contemporary styling means that it will work equally well over a casual look. The oversized patch pockets have a distinctive outline stitching which gives a modern feel to a classic wardrobe piece. The details continue at the back of the coat with a relaxed adjustable back belt and a lower back split with matching buttons. Presented in 100% wool Zeus overcoat fabric this is a versatile investment coat that will provide style and warmth for the winter months.

ZEUS

This iconic overcoat collection returns this season refreshed with a wide selection of new colours, designs and patterns.

The collection opens with a selection of statement checks in a wool and cashmere combination, the designs are enhanced by the colour choices of winter white, soft brown and classic navy. Within the 100% wool selection there is a wide choice of more traditional overcoating patterns before the collection moves into an essential selection of plain colours in the heavier weight of 520gm.

The pinnacle of the collection is a large selection of luxury cashmere articles. Select a traditional finish or for the ultimate in luxury the fabrics with a stunning ripple finish.

PRODUCT DETAILS

Knitwear:

- Rochester – 002_318
Dark Burgundy



SCABAL



AUTUMN / WINTER 2023

Outerwear

Model – Nelson 3

ZEUS
853362



Casual Woven
Trouser

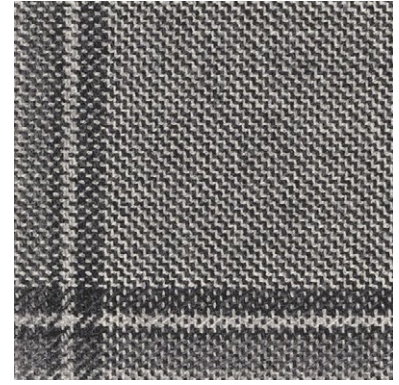
Model – Perth

FLANNEL
& SAXONY
705883

Jacket

Model – Chelsea

AUTUMN
LEAVES
853396



Casual Woven
Trouser

Model – Lurgan

FLANNEL
& SAXONY
705903

NELSON 3

A traditional peacoat ideal for relaxed casual wear, unconstructed and unlined it is designed for city life to fulfil the constant need for adaptable clothes, a simple top layer that can be combined with warm knits or gilets to create a more robust winter outfit or worn with a light jersey or shirt in the transitional months.

CHELSEA

Scabal continues to evolve its tailoring collections with the introduction of the Chelsea shirt jacket. Designed to be a hybrid with the look of a jacket but with the lightness and comfort of wearing a shirt. It gives the wearer the opportunity to create different looks by changing, how it is worn and what it is worn with. It is also available as made to measure in a wide selection of Scabal fabrics.

The design is simple and elegant with the sartorial features that you expect from Scabal, unlined to add to the soft feel, stylish patch pockets on the front but the clever construction allows for a useful hidden pocket on the inside as well.

This is a truly versatile garment, wear it open with a lightweight knit or t shirt underneath for a casual look or worn closed with a tonal turtle neck and matching trousers to project a more considered style.

PRODUCT DETAILS

Knitwear:

· Banbury – 144_139
Anthrasite

Knitwear:

· Drumberg – 001_136
Light Grey Melange



Jacket

Model – Kenton

AUTUMN
LEAVES
853395

Trouser

Denim



AUTUMN LEAVES

As its name suggests, Autumn leaves is designed with the colours of fall in mind. Divided into two chapters the first is a soft wool with added cashmere and the second is 100% extra fine Merino wool, both qualities are woven in a seasonal 320gm weight to give the additional warmth needed in the colder months.

The collection opens with a selection of bold checks with a bright red leading the way, it moves through a range of fancy checks each one with an individual feel and closes with a dramatic selection of plains with a distinctive light and dark twisted yarn effect which adds depth and character.

Colour are wide and varied, reds, browns, greens, burgundy, rust, a selection of blues, greys and winter whites all feature with many designs including multiple colour combinations.

PRODUCT DETAILS

Knitwear:

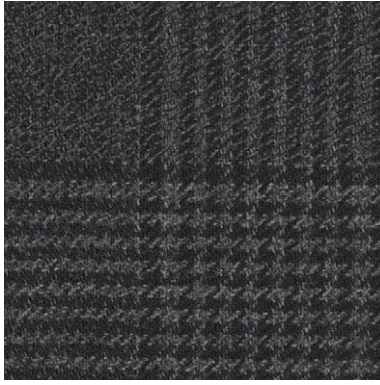
- Telford – 006_319
Dark Red



Jacket

Model – Kenton

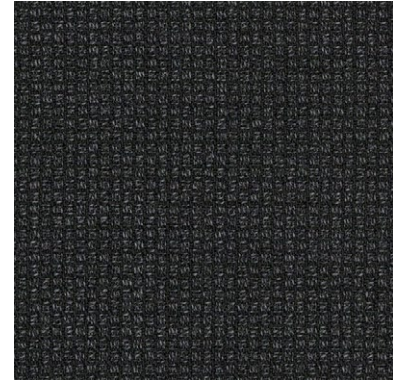
AUTUMN
LEAVES
853401



Jacket

Model – Kenton
Light

CONNECT
706058



Trouser

Model – W710

FLANNEL
& SAXONY
705895

Trouser

Model – V715

FLANNEL
& SAXONY
705905

KENTON LIGHT

The Kenton model was always designed to be lightweight and comfortable with its unconstructed and unlined characteristics but now it has evolved even further with the introduction of the new Kenton Light. This jacket takes comfort to the next level.

Our design team studied the Kenton in detail trying to find ways to reduce the weight and thickness of the garment with the objective of creating a jacket that feels like you are not wearing it. The original interlining was removed along with the distinctive butterfly shoulder lining. In its place expert craftsmanship has produced a jacket with a superior internal construction which itself acts as the frame of the jacket. External Patch pockets are cleverly designed to host internal pockets eliminating the need for the traditional chest pockets and adding a pocket that won't hang or drag down the line of the jacket.

PRODUCT DETAILS

Knitwear:

- Telford – 006_999
Black

Knitwear:

- Telford – 006_999
Black



Outerwear

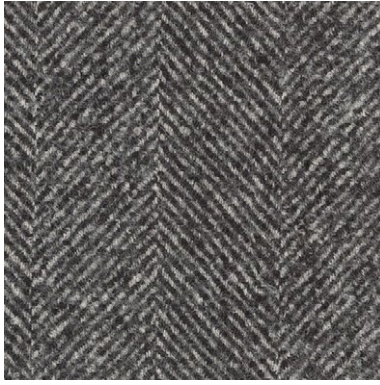
Model – Leeds 1

ZEUS
853350

Trouser

Model – W700

FLANNEL
& SAXONY
705903



Outerwear

Model – Lynmouth 1

FINP EXCLUSIVE
FABRIC
602294



LEEDS

Depending on the fabric choice, the Leeds coat can be worn as a smart business overcoat or as a stylish casual piece. It is unconstructed and unlined making it an adaptable top layer that will work well in the transitional weather months.

LYNMOUTH I

As the need for adaptable clothing continues, Scabal introduce the ultimate in sartorial layering. The Lynmouth has been designed to be worn both underneath another jacket to add warmth and adaptability or on its own to give a technical sporty look. This padded down jacket is designed to give the ultimate in warmth without adding any bulk through the use of the patented Thindown filling. The outer fabric is a robust nylon with the Thindown – a globally patented concept – bringing a lightweight, breathable, sustainable and natural down element to the jacket. It has the performance capability to keep you warm on the coldest of winter days through its innovative continuous sheet design, eliminating the need for stitching and thereby keeping warmth constant through the jacket.

PRODUCT DETAILS

Knitwear:

- Evanton – 001_999
Black

Hat:

- Beanie
Carmin Red



SCABAL



AUTUMN / WINTER 2023

Outerwear

Model – Stanfield 1

AUTUMN
LEAVES
853381

Trouser

Model – G710

FLANNEL
& SAXONY
705903



Outerwear

Model – Oxford 7

FINP EXCLUSIVE
FABRIC
602210

Trouser

Model – Lurgan

FLANNEL
& SAXONY
705883



STANFIELD

A casual jacket with a twist. The addition of a detachable internal waistcoat adds interest and style. The front zip gives the impression of a gilet but can be quickly removed to revert to a regular jacket. The option of a hooded waistcoat has been introduced to give a more sportswear feel. Choose from a selection of technical fabrics to protect against the cooler seasonality or keep it more sartorial with a large selection from Scabal Jacket collections. adding any bulk so your sartorial style is also protected.

OXFORD 7

This elegant field jacket is now available in a padded, non-quilted version, the Oxford 7. It has the same casual look but the use of the patented Thindown filling gives it a more modern appearance and it feels more like a utility jacket.

The thindown also elevates the performance attributes of this jacket to a new level for Scabal. The jacket is available with the outer fabric in a internally laminated wool which adds some weatherproof characteristics but it is the Thindown – a globally patented concept – bringing a lightweight, breathable, sustainable and natural down element to the jacket that really makes the difference.

PRODUCT DETAILS

Knitwear:

- Contin – 001_322
Carmine

Knitwear:

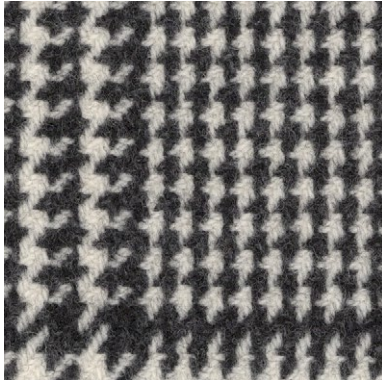
- Crawley –001_143
Dark Grey



Outerwear

Model – Overcoat

ZEUS
853331



Trouser

Black Denim

ZEUS

This iconic overcoat collection returns this season refreshed with a wide selection of new colours, designs and patterns.

The collection opens with a selection of statement checks in a wool and cashmere combination, the designs are enhanced by the colour choices of winter white, soft brown and classic navy. Within the 100% wool selection there is a wide choice of more traditional overcoating patterns before the collection moves into an essential selection of plain colours in the heavier weight of 520gm.

The pinnacle of the collection is a large selection of luxury cashmere articles. Select a traditional finish or for the ultimate in luxury the fabrics with a stunning ripple finish.

PRODUCT DETAILS

Knitwear:

- Telford – 006_999
Black

Scarf:

- Newry – 143_999
Black


SCABAL



AUTUMN / WINTER 2023

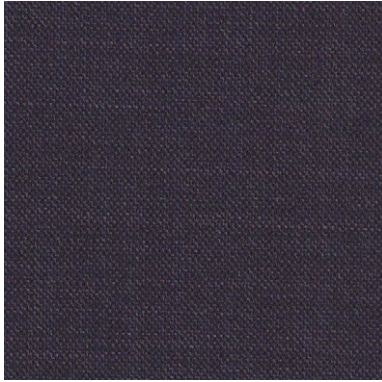
Jacket

Model – Soho
Blue Line

CHAMPION
754807

Trouser

Model – G710



CHAMPION

A new innovation from Scabal, the Champion collection has the feel of traditional British suiting but with the added element of stretch to create a cloth that fits the needs of modern suiting. The colours and designs are classic Scabal and there is a lot of choice, pick & picks, semi-classic checks and subtle shadow stripes all feature alongside a colour palette that includes some surprises, bright shades of blue, soft greens and a subtle autumnal browns and purple.

With its soft Super 120's wool, Champion is destined to become the go-to bunch for a classic suiting style with the added stretch bringing a contemporary attitude and functionality.

PRODUCT DETAILS

Knitwear:

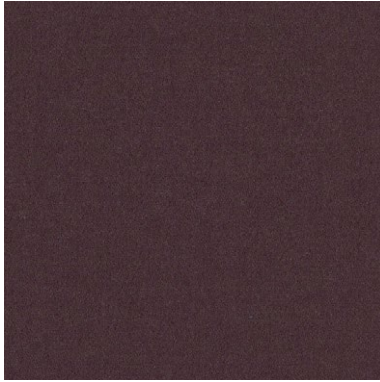
- Telford – 006_318
Dark Burgundy



Jacket

Model – Kenton

MAGUS
501727



Trouser

Model – V700

Jacket

Model – Soho

AUTUMN
LEAVES
853390



Trouser

Model – V700

CORDUROY
501662



MAGUS

The new Magus collection builds on the success of its predecessor Wizard, to present a winter selection of luxury suiting fabrics combining Super 160's wool with a natural stretch created purely by the skill of the weavers at the mill.

This considered collection of 14 articles has a soft milled finish and is perfect to add warmth and softness during the colder months. When combined with the superior wool, the stretch characteristics create fabrics that are ideal for the daily requirements of contemporary garments.

The fabrics colours are plain but essential, ranging from a light cream through soft greys, warm camels, a selection of blues and even a pure black.

AUTUMN LEAVES

As its name suggests, Autumn leaves is designed with the colours of fall in mind. Divided into two chapters the first is a soft wool with added cashmere and the second is 100% extra fine Merino wool, both qualities are woven in a seasonal 320gm weight to give the additional warmth needed in the colder months.

The collection opens with a selection of bold checks with a bright red leading the way, it moves through a range of fancy checks each one with an individual feel and closes with a dramatic selection of plains with a distinctive light and dark twisted yarn effect which adds depth and character.

Colour are wide and varied, reds, browns, greens, burgundy, rust, a selection of blues, greys and winter whites all feature with many designs including multiple colour combinations.

PRODUCT DETAILS

Knitwear:

- Telford – 006_318
Dark Burgundy

Knitwear:

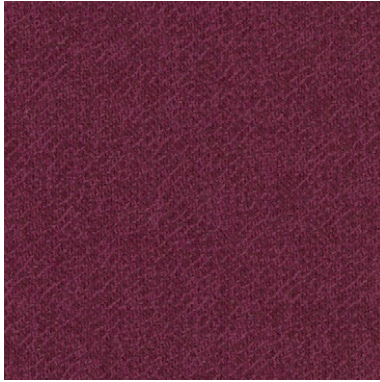
- Telford – 006_318
Dark Burgundy



Jacket

Model – Kenton
Light

AUTUMN
LEAVES
853404



Casual Woven

Trouser

Model – Lurgan

CORDUROY
501662



KENTON LIGHT

The Kenton model was always designed to be lightweight and comfortable with its unconstructed and unlined characteristics but now it has evolved even further with the introduction of the new Kenton Light. This jacket takes comfort to the next level.

Our design team studied the Kenton in detail trying to find ways to reduce the weight and thickness of the garment with the objective of creating a jacket that feels like you are not wearing it. The original interlining was removed along with the distinctive butterfly shoulder lining. In its place expert craftsmanship has produced a jacket with a superior internal construction which itself acts as the frame of the jacket. External Patch pockets are cleverly designed to host internal pockets eliminating the need for the traditional chest pockets and adding a pocket that won't hang or drag down the line of the jacket.

PRODUCT DETAILS

Knitwear:

- Telford – 006_318
Dark Burgundy



THE NATURE LOVER

Jacket

Model – Soho

AUTUMN
LEAVES
853387



Jacket

Model – Soho Blue
Line

AUTUMN
LEAVES
853406



Trouser

Model – W700

FLANNEL &
SAXONY
705898



Trouser

Model – W700

FLANNEL
& SAXONY
705898

AUTUMN LEAVES

As its name suggests, Autumn leaves is designed with the colours of fall in mind. Divided into two chapters the first is a soft wool with added cashmere and the second is 100% extra fine Merino wool, both qualities are woven in a seasonal 320gm weight to give the additional warmth needed in the colder months.

The collection opens with a selection of bold checks with a bright red leading the way, it moves through a range of fancy checks each one with an individual feel and closes with a dramatic selection of plains with a distinctive light and dark twisted yarn effect which adds depth and character.

Colour are wide and varied, reds, browns, greens, burgundy, rust, a selection of blues, greys and winter whites all feature with many designs including multiple colour combinations.

PRODUCT DETAILS

Knitwear:

- Telford – 006_811
Dark Brown Melange

Knitwear:

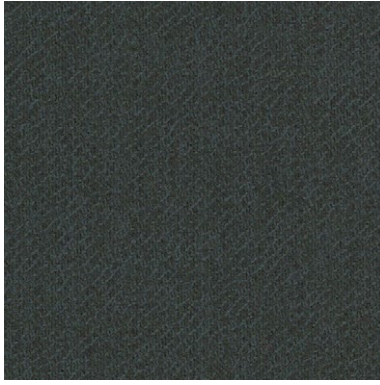
- Telford – 007_798
Brown



Jacket

Model – Kenton

AUTUMN
LEAVES
853405



Jacket

Model – Kenton

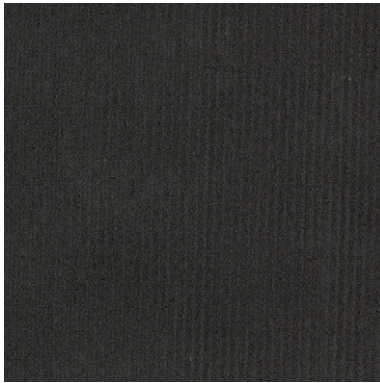
AUTUMN
LEAVES
853388



Trouser

Model – W700

CORDUROY
501661



Trouser

Model –VS50

CORDUROY
501661

AUTUMN LEAVES

As its name suggests, Autumn leaves is designed with the colours of fall in mind. Divided into two chapters the first is a soft wool with added cashmere and the second is 100% extra fine Merino wool, both qualities are woven in a seasonal 320gm weight to give the additional warmth needed in the colder months.

The collection opens with a selection of bold checks with a bright red leading the way, it moves through a range of fancy checks each one with an individual feel and closes with a dramatic selection of plains with a distinctive light and dark twisted yarn effect which adds depth and character.

Colour are wide and varied, reds, browns, greens, burgundy, rust, a selection of blues, greys and winter whites all feature with many designs including multiple colour combinations.

PRODUCT DETAILS

Knitwear:

- Drumberg – 001_684
Dark Green

Knitwear:

- Drumberg – 001_452
Cardinal Purple



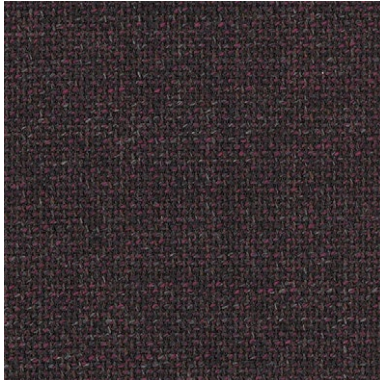
Outerwear

Model – Plymouth 1

CONNECT
706062

Trouser

Black Denim



PLYMOUTH 1

The Plymouth is an unlined overshirt. Designed as a fashion piece to be worn as an over layer combined with jersey or knitwear. It has a button front closure with two large flap pockets and 2 concealed side pockets. Create a more casual look by selecting a soft fabric from the Cashmere cotton collection or for a more luxurious summer feel select something from Nobility with its wool and silk combination. For season long winter elegance, choose from Sonata's soft herringbones or from a large choice in the Flannel & Saxony collection

CONNECT

A new innovation from Scabal, Connect is a contemporary range of fabrics designed with comfort and softness at its heart. The collection opens with a selection of textured fabrics, all with a knitted appearance and a soft feel, ideal to create, the relaxed garments required for a busy modern life. Although they appear knitted, these fabrics are all traditionally woven. It is the skills of the weavers that create this alternative look and finish.

The superior stretch throughout the entire collection ensures that the fabrics are equally suitable for a soft unconstructed jacket as a robust and hard-working pair of trousers. The added stretch brings some crease resistance but more importantly ensures that garments return to their original shape each time they are worn.

The collection closes with a small range of plain fabrics which have a deliberately overconstructed robust finish, and when combined with the colour palette of browns, greens, camel, blues and greys gives them a very modern look.

PRODUCT DETAILS

Knitwear:

- Telford – 006_318
Dark Burgundy



Jacket

Model – Soho Blue
Line

HYBRID
754825

Trouser

Model – V700

HYBRID
754826



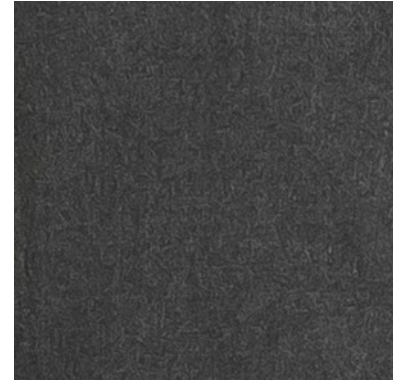
Outerwear

Model – Oxford 7

TECHNICAL
EXCLUSIVE
COLLECTION
602207

Trouser

Denim



OXFORD 7

Continuously evolving, the Oxford family of jackets has a new introduction this season. This elegant field jacket is now available in a padded, non-quilted version, the Oxford 7. It has the same casual look but the use of the patented Thindown filling gives it a more modern appearance and it feels more like a utility jacket.

The thindown also elevates the performance attributes of this jacket to a new level for Scabal. The jacket is available with the outer fabric in a internally laminated wool which adds some weatherproof characteristics but it is the Thindown – a globally patented concept – bringing a lightweight, breathable, sustainable and natural down element to the jacket that really makes the difference. It has the performance capability to keep you warm on the coldest of winter days through its innovative continuous sheet design eliminating the need for stitching and thereby keeping warmth constant through the jacket without adding any bulk so your sartorial style is also protected.

PRODUCT DETAILS

Knitwear:

- Telford – 006_811
Dark Brown Melange

Knitwear:

- Banbury – 128_001
Off White



Outerwear

Model – York

ZEUS
853355

Trouser

Denim



Outerwear

Model – Dartmoor 3

ZEUS
853355

Trouser

Denim



YORK

The York jacket is a new introduction this season. It takes its inspiration from a field jacket but as you would expect, it has some unmistakable Scabal touches to ensure it's a sartorial essential.

Functionality is key, it has 2 front pockets featuring a double entrance to enhance their practicality, there is a hidden hood within the collar and a detachable faux fur collar.

The coat is lined with soft fabric and there is an internal drawstring waist to keep the jacket in place on colder days. Leather trims on the collar and pockets add a touch of luxury.

Choose from a selection of overcoat weight fabrics to add warmth and comfort for the winter months.

DARTMOOR 2

The Dartmoor jacket has a utility feel to it but with unmistakable Scabal touches that make it a wardrobe essential. Functionality is key, with 4 large front pockets, a detachable, hidden hood and a collar strap with snap button. It has a light construction and is half lined in a soft Silver Ghost fabric. For added comfort it has an inner drawstring waist and a shoulder pleat with an internal elastic band which provides flexible movement and ensures the jacket always keeps its shape. Now available in a selection of Scabal fabrics designed to give it a more sartorial look than the original Dartmoor.

PRODUCT DETAILS

Knitwear:

- Telford – 006_318
Dark Burgundy

Knitwear:

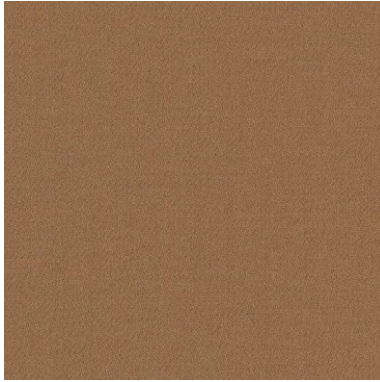
- Banbury – 128_001
Off White



Jacket

Model – Curzon
Blue Line

MAGUS
501723



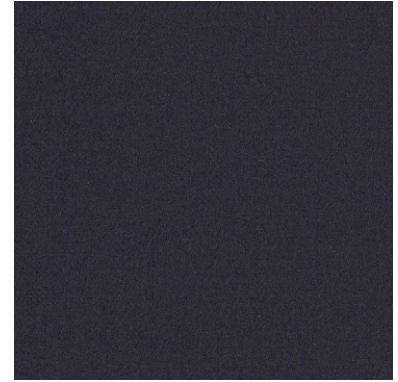
Trouser

Model – V715

Jacket

Model – Soho
Blue Line

MAGUS
501732



Trouser

Model – V700

MAGUS

The new Magus collection builds on the success of its predecessor Wizard, to present a winter selection of luxury suiting fabrics combining Super 160's wool with a natural stretch created purely by the skill of the weavers at the mill.

This considered collection of 14 articles has a soft milled finish and is perfect to add warmth and softness during the colder months. When combined with the superior wool, the stretch characteristics create fabrics that are ideal for the daily requirements of contemporary garments.

The fabrics colours are plain but essential, ranging from a light cream through soft greys, warm camels, a selection of blues and even a pure black.

PRODUCT DETAILS

Knitwear:

- Drumberg – 001_810
Light Camel

Casual Shirt:

- Casual Shirt –107_509
Denim



Overcoat

ZEUS
853366



ZEUS

This iconic overcoat collection returns this season refreshed with a wide selection of new colours, designs and patterns.

The collection opens with a selection of statement checks in a wool and cashmere combination, the designs are enhanced by the colour choices of winter white, soft brown and classic navy. Within the 100% wool selection there is a wide choice of more traditional overcoating patterns before the collection moves into an essential selection of plain colours in the heavier weight of 520gm.

The pinnacle of the collection is a large selection of luxury cashmere articles. Select a traditional finish or for the ultimate in luxury the fabrics with a stunning ripple finish.

PRODUCT DETAILS

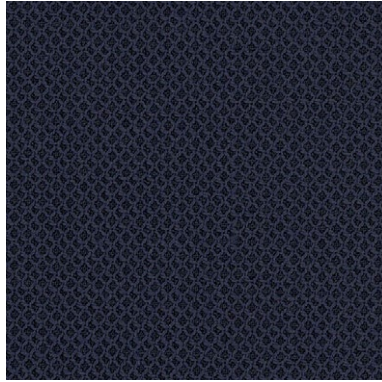
Photographed over
Magus Suit – 501723



Jacket

Model – Kenton
Light

CONNECT
706055



Trouser

Model – G700

FLANNEL
& SAXONY
705901

Jacket

Model – Soho

AUTUMN
LEAVES
853402



Trouser

Model – G700

FLANNEL
& SAXONY
705901

KENTON LIGHT

The Kenton model was always designed to be lightweight and comfortable with its unconstructed and unlined characteristics but now it has evolved even further with the introduction of the new Kenton Light. This jacket takes comfort to the next level.

Our design team studied the Kenton in detail trying to find ways to reduce the weight and thickness of the garment with the objective of creating a jacket that feels like you are not wearing it. The original interlining was removed along with the distinctive butterfly shoulder lining. In its place expert craftsmanship has produced a jacket with a superior internal construction which itself acts as the frame of the jacket. External Patch pockets are cleverly designed to host internal pockets eliminating the need for the traditional chest pockets and adding a pocket that won't hang or drag down the line of the jacket.

PRODUCT DETAILS

Knitwear:

- Telford – 004_480
Navy

Knitwear:

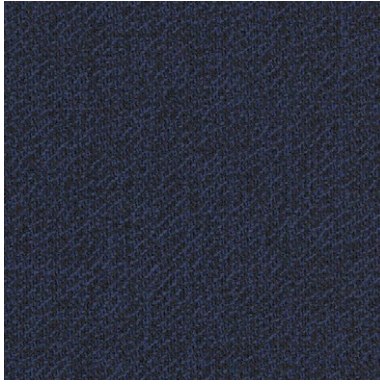
- Crewe – 006_480
Navy



Jacket

Model – Curzon

AUTUMN
LEAVES
853407



Jacket

Model – Curzon

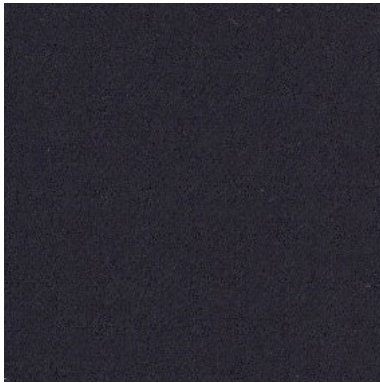
AUTUMN
LEAVES
853391



Trouser

Model – G700

FLANNEL
& SAXONY
705907



Trouser

Model – W700

CORDUROY
501675



AUTUMN LEAVES

As its name suggests, Autumn leaves is designed with the colours of fall in mind. Divided into two chapters the first is a soft wool with added cashmere and the second is 100% extra fine Merino wool, both qualities are woven in a seasonal 320gm weight to give the additional warmth needed in the colder months.

The collection opens with a selection of bold checks with a bright red leading the way, it moves through a range of fancy checks each one with an individual feel and closes with a dramatic selection of plains with a distinctive light and dark twisted yarn effect which adds depth and character.

Colour are wide and varied, reds, browns, greens, burgundy, rust, a selection of blues, greys and winter whites all feature with many designs including multiple colour combinations.

PRODUCT DETAILS

Knitwear:

- Telford – 006_480
Navy

Knitwear:

- Drumberg – 001_802
Tobacco



Jacket

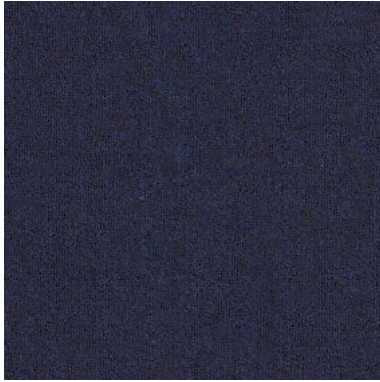
Model – Chelsea

Casual Woven

Trouser

Model – Perth

FLANNEL
& SAXONY
705901



Jacket

Model – Kenton

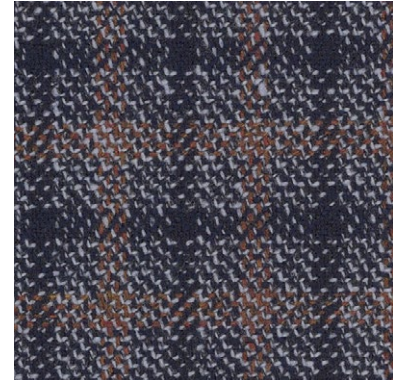
AUTUMN
LEAVES
853386

Casual Woven

Trouser

Model – Perth

FLANNEL
& SAXONY
705888



CHELSEA

Scabal continues to evolve its tailoring collections with the introduction of the Chelsea shirt jacket. Designed to be a hybrid with the look of a jacket but with the lightness and comfort of wearing a shirt. It gives the wearer the opportunity to create different looks by changing, how it is worn and what it is worn with. It is also available as made to measure in a wide selection of Scabal fabrics.

The design is simple and elegant with the sartorial features that you expect from Scabal, unlined to add to the soft feel, stylish patch pockets on the front but the clever construction allows for a useful hidden pocket on the inside as well.

This is a truly versatile garment, wear it open with a lightweight knit or t shirt underneath for a casual look or worn closed with a tonal turtle neck and matching trousers to project a more considered style.

PRODUCT DETAILS

Knitwear:

- Telford – 006_480
- Navy

Knitwear:

- Telford – 006_480
- Navy



SCABAL



AUTUMN / WINTER 2023

Overcoat

Model – Overcoat

ZEUS
853332

Trouser

Denim



Leather

Model – Montrose –
141_480 Shearling

Casual Woven

Trouser

Model – Perth

FLANNEL
& SAXONY
705908



ZEUS

This iconic overcoat collection returns this season refreshed with a wide selection of new colours, designs and patterns.

The collection opens with a selection of statement checks in a wool and cashmere combination, the designs are enhanced by the colour choices of winter white, soft brown and classic navy. Within the 100% wool selection there is a wide choice of more traditional overcoating patterns before the collection moves into an essential selection of plain colours in the heavier weight of 520gm.

The pinnacle of the collection is a large selection of luxury cashmere articles. Select a traditional finish or for the ultimate in luxury the fabrics with a stunning ripple finish.

PRODUCT DETAILS

Knitwear:

- Banbury – 144_480
Navy

Knitwear:

- Drumberg – 001_802
Tobacco



Outerwear

Model – Warwick 1

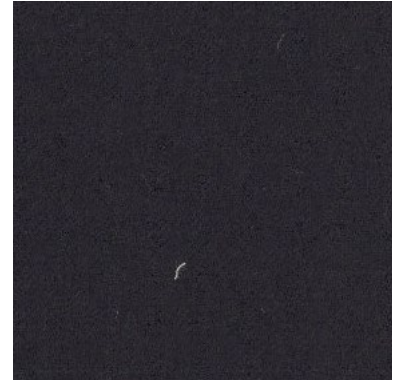
ZEUS
853357



Casual Woven
Trousers

Model – Perth

FLANNEL
& SAXONY
705908



WARWICK 1

Taking inspiration from a classic Harrington jacket this bomber jacket is designed with a Scabal twist. It is padded for warmth and can be made in a selection of overcoating fabrics including some exclusive to the Scabal trend stories and not available in any bunches. The Warwick is finished with a soft rib on the hem and sleeves to add comfort and has two large patch pockets with both top and side entry to make it practical as well as stylish.

ZEUS

This iconic overcoat collection returns this season refreshed with a wide selection of new colours, designs and patterns.

The collection opens with a selection of statement checks in a wool and cashmere combination, the designs are enhanced by the colour choices of winter white, soft brown and classic navy. Within the 100% wool selection there is a wide choice of more traditional overcoating patterns before the collection moves into an essential selection of plain colours in the heavier weight of 520gm.

The pinnacle of the collection is a large selection of luxury cashmere articles. Select a traditional finish or for the ultimate in luxury the fabrics with a stunning ripple finish.

PRODUCT DETAILS

Knitwear:

- Drumberg – 001_802
Tobacco