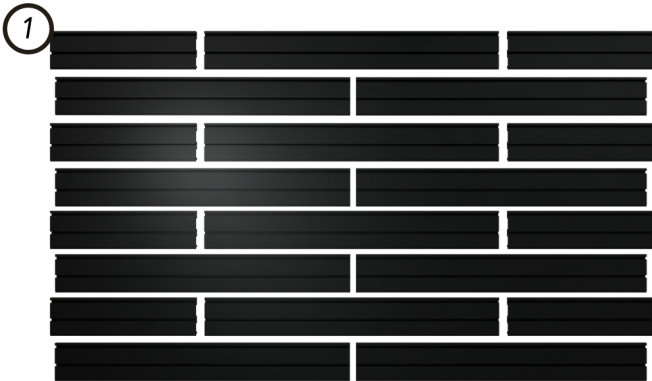


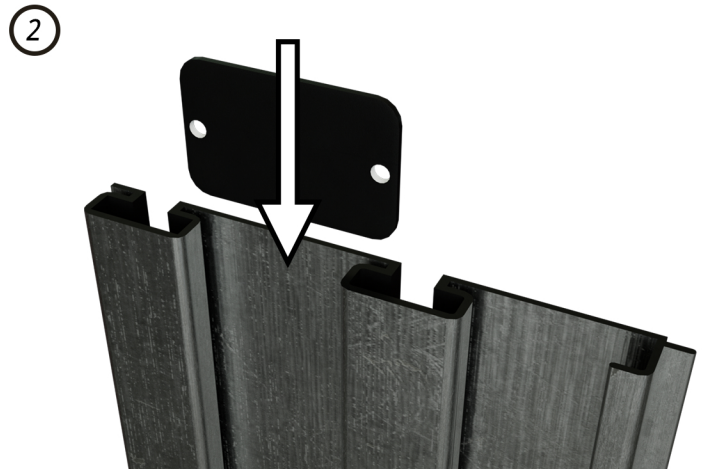
HOLDUP DISPLAYS

1-866-443-6623
www.holdupdisplays.com

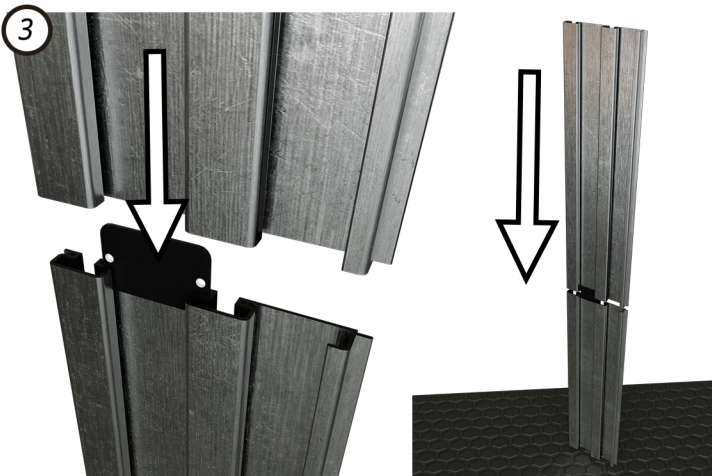
HD107
Tactical Wall Display Package



Choose a location and height for your rack taking into consideration clearance required to add and remove firearms from racks. Begin installation with the lowest row of rails



Insert joiner piece into back of slatwall



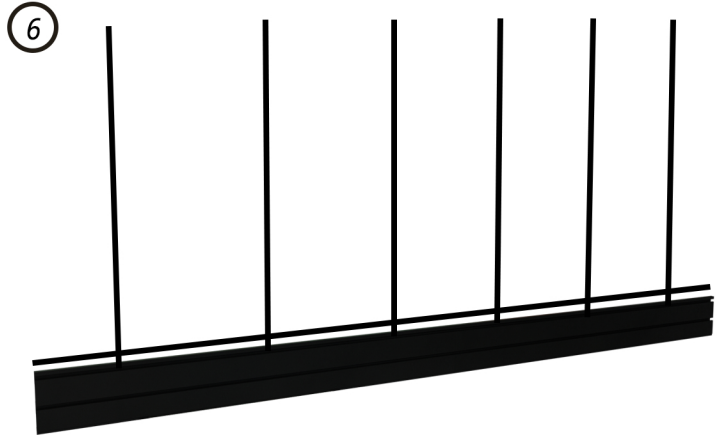
Press rails together. Grasping the top rail, tap rails on a rug or a non-marring surface to close gap



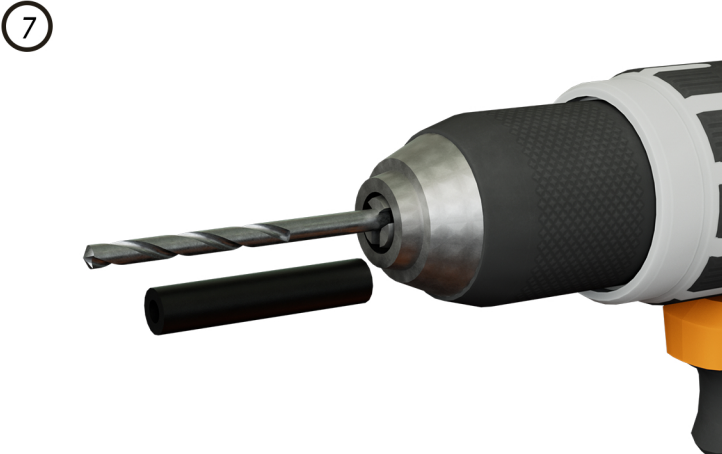
Hold rail against wall, check level, Draw a line along the top of the rail



5
Using your preferred method, locate and mark every stud along the line. Extend lines vertically to the full height of display and recheck stud alignment



6
Transfer Stud marks to top and bottom channels
NOTE: Studs must be within 7" of the end of the rail.
If a stud aligns with joint of the two rails, move display 1" left or right



7
Insert 3/16" drill bit into drill leaving 2 & 1/2" inches exposed.



8
Place drill guide into slatwall channel on stud marks. Drill holes in the center of top and bottom channels at all marked stud locations



9
Check level and drive the screws into every available mounting location



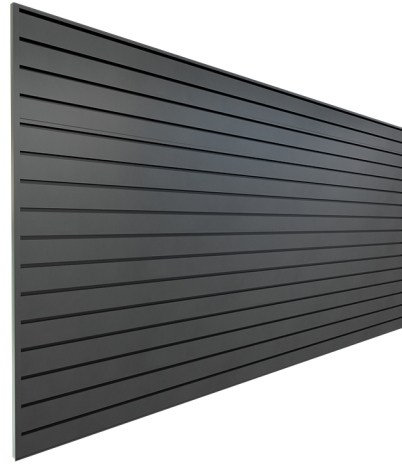
10
Join, mark, drill, and attach with screws each additional row to complete wall

11



Remove paper backing from 3M VHB™ adhesive strip and apply to end cap. Remove red backing

12



Apply end caps to both edges of wall

13



Tilt fixtures to insert into slatwall rail

14



Tilt and hook slatwall safety clip into bottom track of rail on the left side of the hanger

15



Slide clip to the right

| <i>What's in the box:</i> | <i>SKU:</i> | <i>Description:</i> | <i>Quantity:</i> |
|---|--------------------------|------------------------------|------------------|
|  | <i>HDSW22-B</i> | <i>24" Slatwall Panels</i> | <i>8</i> |
|  | <i>HDSW24-B</i> | <i>48" Slatwall Panels</i> | <i>12</i> |
|  | <i>HD04-3SW</i> | <i>Horizontal Rifle Rack</i> | <i>2</i> |
|  | <i>HD09-3SW</i> | <i>Pistol Holder</i> | <i>12</i> |
|  | <i>HD53-3SW</i> | <i>Vertical 6 Rifle Rack</i> | <i>2</i> |
|  | <i>HD94-3SW</i> | <i>Magazine Rack</i> | <i>6</i> |
|  | <i>HD75-SW</i> | <i>Heavy Duty Shelf</i> | <i>2</i> |
|  | <i>HDSW2EC-B48.25</i> | <i>End Cap</i> | <i>2</i> |
|  | <i>#10 x 2 in. Screw</i> | <i>Mounting Screw</i> | <i>138</i> |
|  | <i>Joiner</i> | <i>Joiner Plate</i> | <i>12</i> |
|  | <i>HD46</i> | <i>Slatwall Clip</i> | <i>16</i> |