

#BeAChangeMaker

**BREYTING
IS CHANGE**

MEET 811 WOODLAND | BP-37

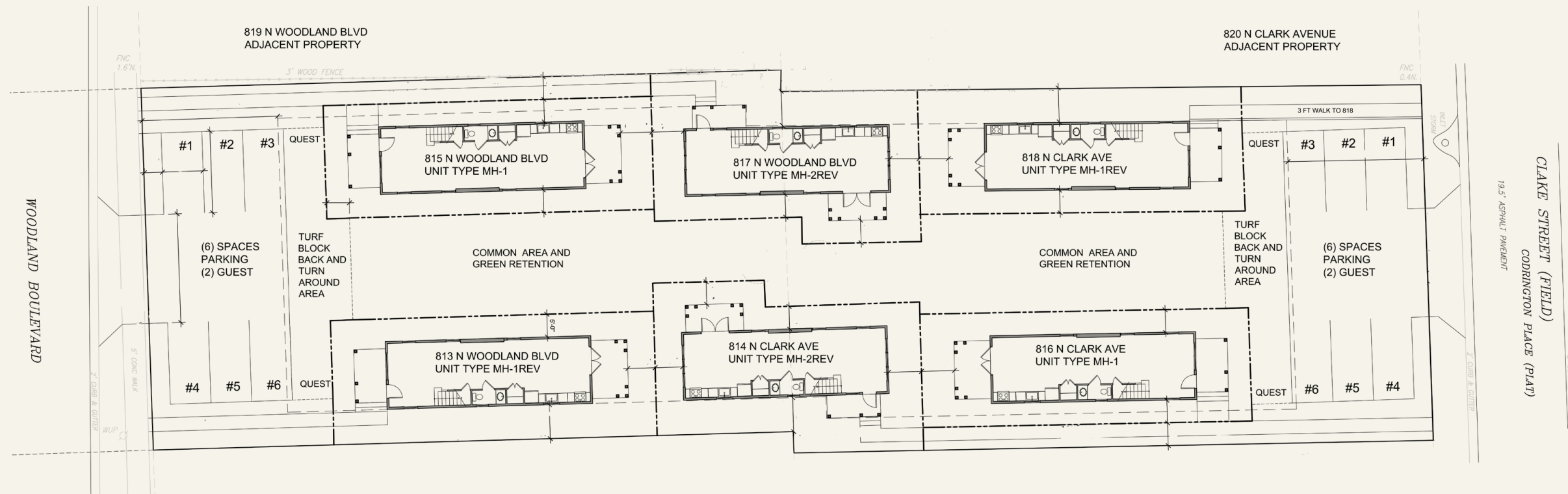
MINA HOUSE

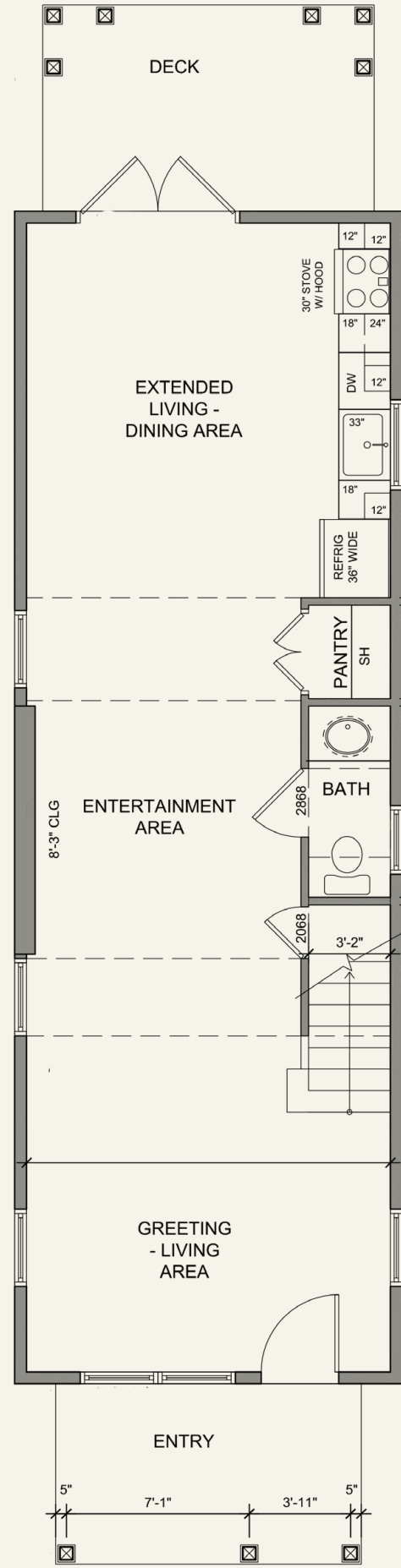
Meet 811 Woodland, a cozy garden community that holds six of Breyting's Mina houses next to Florida's oldest university, Stetson.



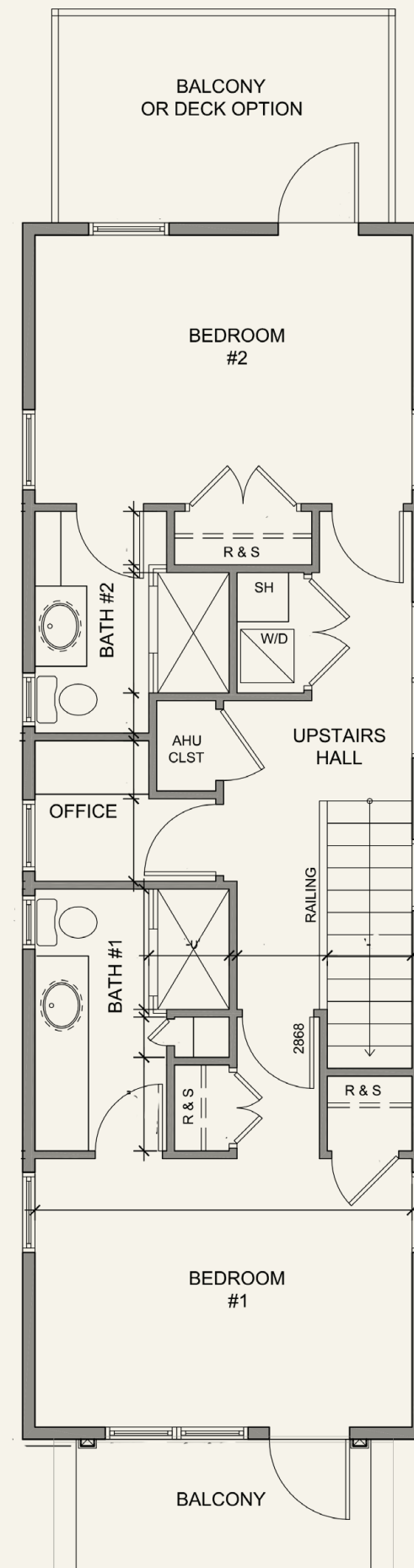
P.3 Meet Mina House

- + Our Mina house is a small cozy 2 story, 2 bedroom, 2.5 bath, home with a small office totaling 1,300 sq. ft.
- + There are three different architecture styles that share the same footprint and floorplan.
- + 1,300 square feet of thoughtful design offers a large open room on the first floor, intended to be as flexible as you need, and has a utility room, 1/2 bath, and pantry tucked under the stairs.
- + The back doors open the kitchen to a deck so container gardening will be easy.
- + Two bedrooms, two full baths, and a home office make up the second floor.
- + The master is at the front with a vaulted white-beamed ceiling which gives the room a lofty feel.
- + The home office is centered between both bedrooms and has a large window which makes the room feel big and allows for work/live balance.
- + These homes appeal to the homeowner who wants to own less, and live more.

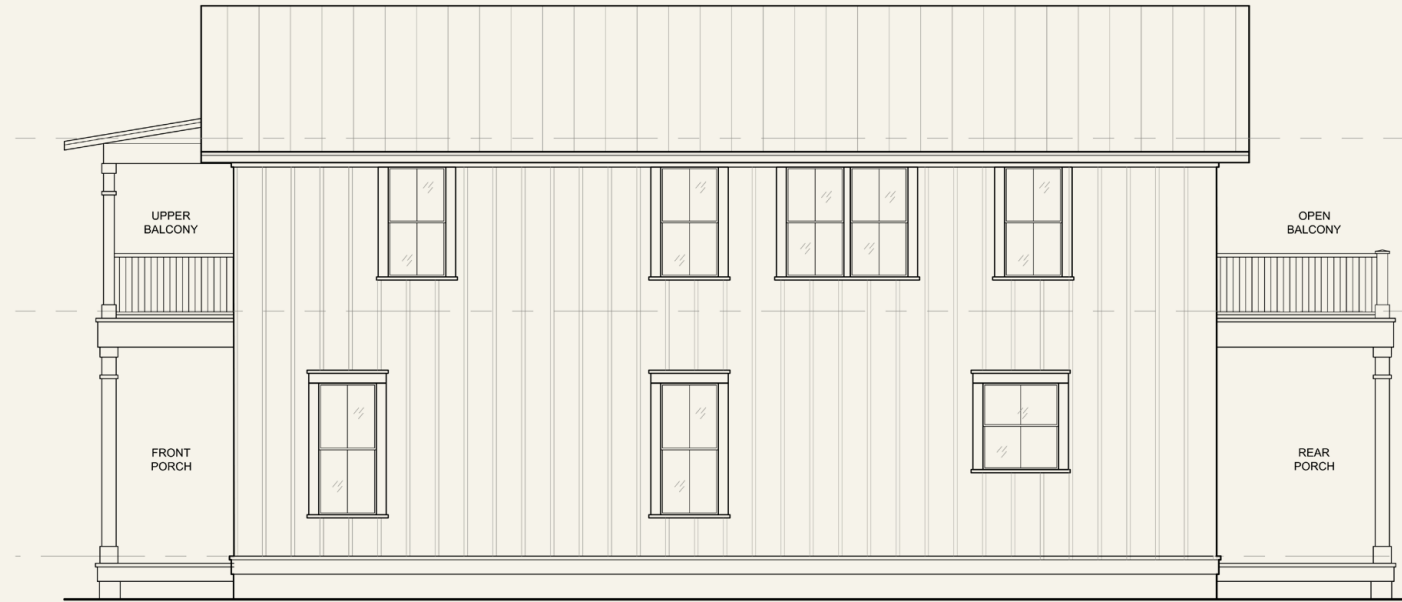




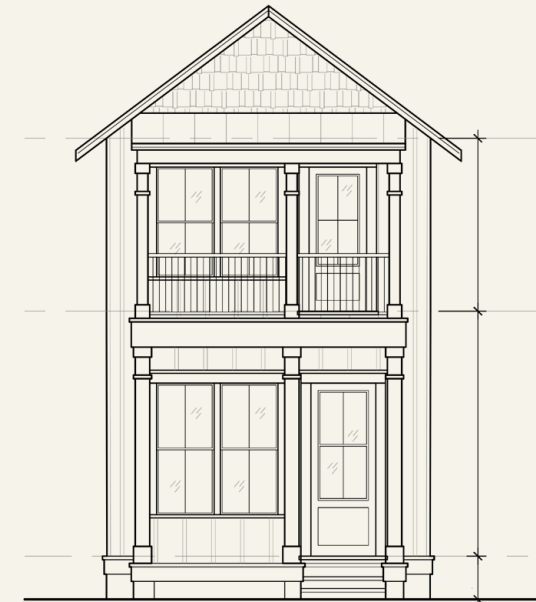
Mina First Floor



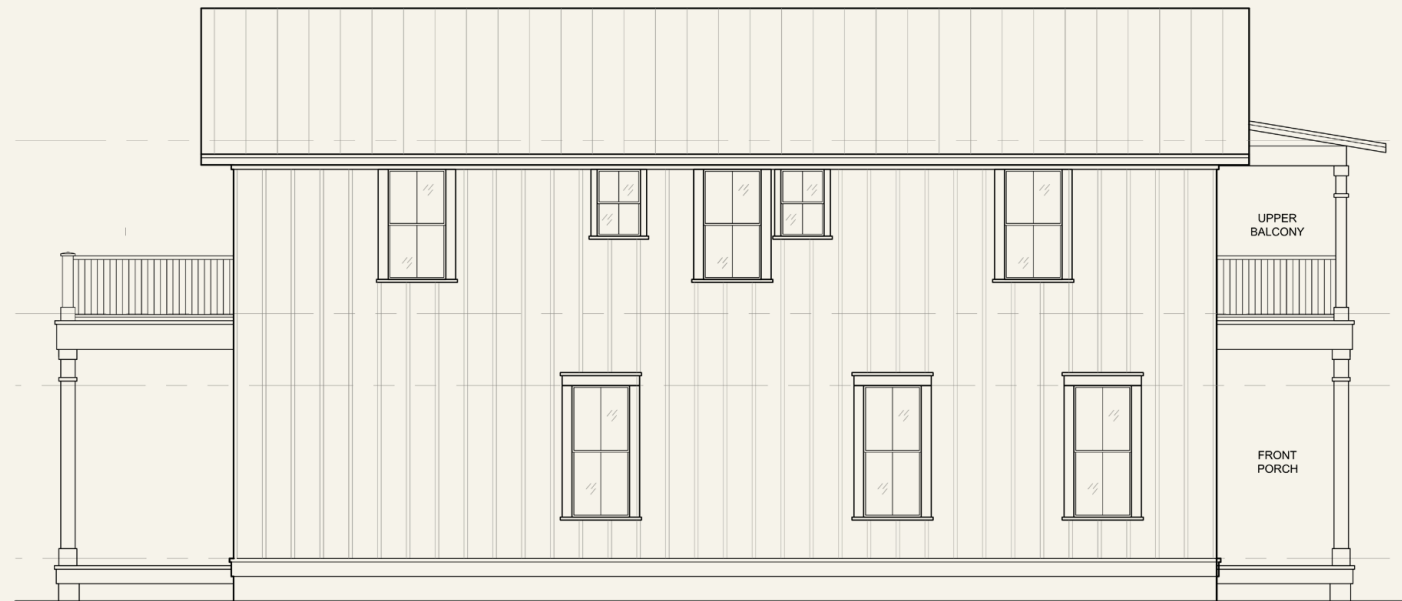
Mina Second Floor



Mina House #1 Side Elevation



Mina House #1 Front Elevation



Mina House #1 Side Elevation



Mina House #1 Rear Elevation



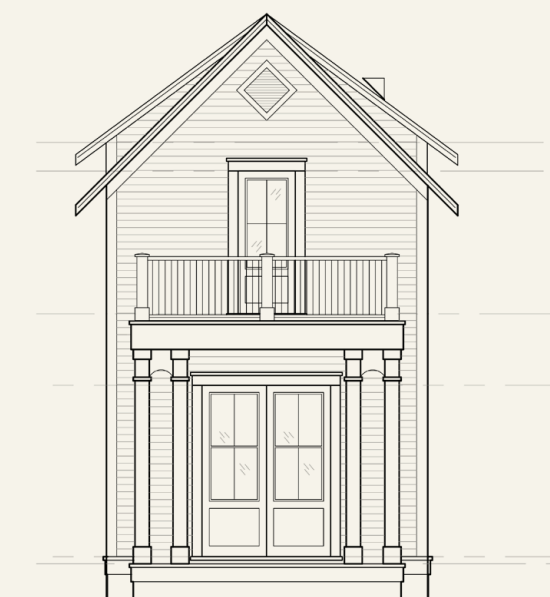
Mina House #2 Side Elevation



Mina House #2 Front Elevation



Mina House #2 Side Elevation



Mina House #2 Rear Elevation



Mina House #3 Side Elevation



Mina House #3 Front Elevation



Mina House #3 Side Elevation



Mina House #3 Rear Elevation

LOCATION

811 Woodland is an EXTRAORDINARY LOCATION next to Stetson University that holds six of Breyting's Mina Houses. From the property it is a pleasure to walk through the beautiful cascading oak trees when you head to historic downtown DeLand and its numerous shops and restaurants. This property has many advantages that will seduce you.

Address: 811 Woodland Blvd, DeLand, FL, 32724



COLLABORATE WITH US.

Buy the project from us

We welcome investors or builders to purchase the land and approved plans from us.

Email Von Coven at: von@breyting.com

Current Status

+ The city has informed us there is an impact fee credit for the home previously on this site.