



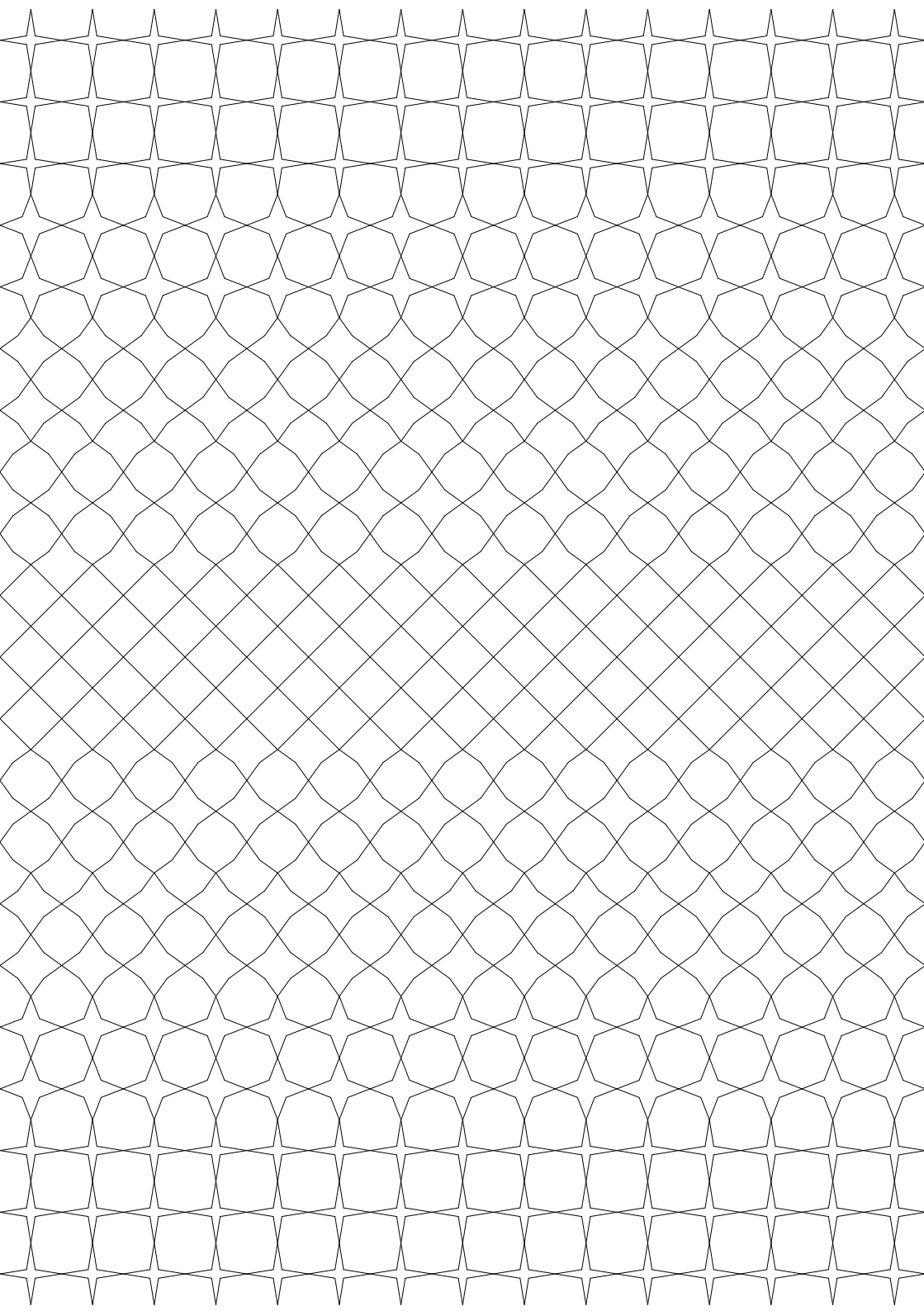
COCOON
FINE RUGS

Rooshad Shroff
R O O S H A D S H R O F F

TESSELLATIONS

Rooshad Shroff for Cocoon Fine Rugs

www.cocoonfinerugs.com



Rooshad Shroff morphs the modern and the traditional in his latest collection for Cocoon Fine Rugs

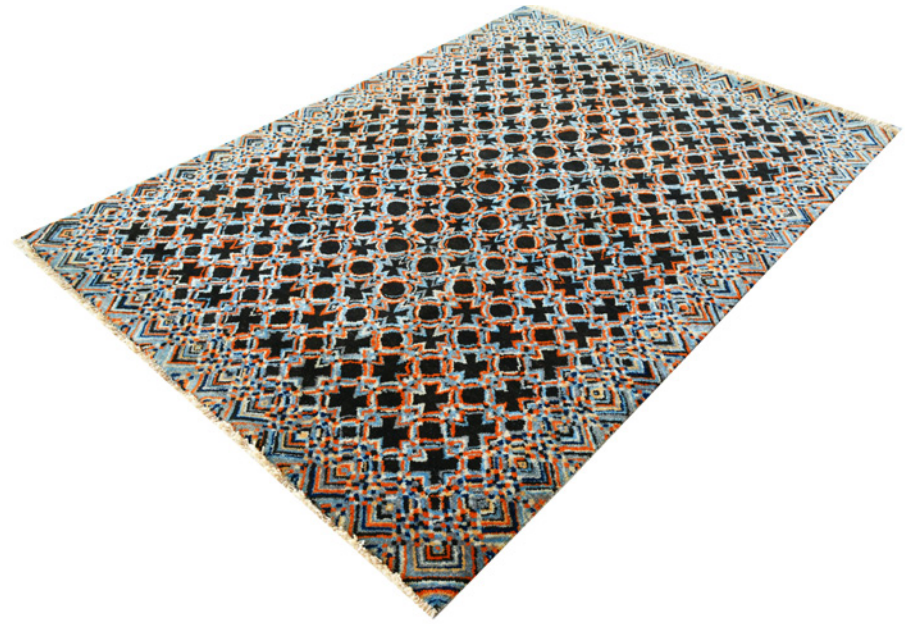
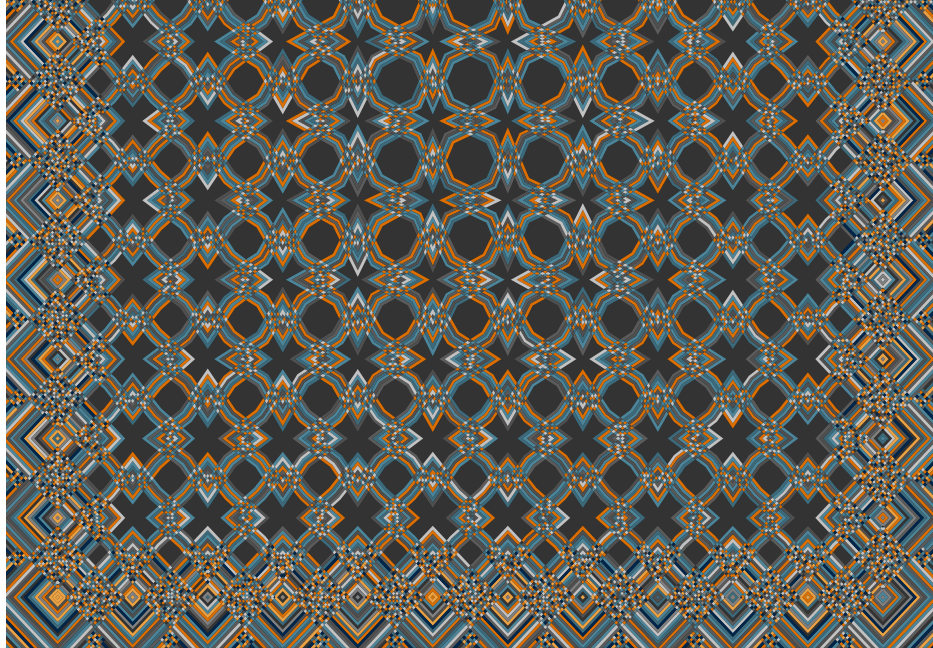
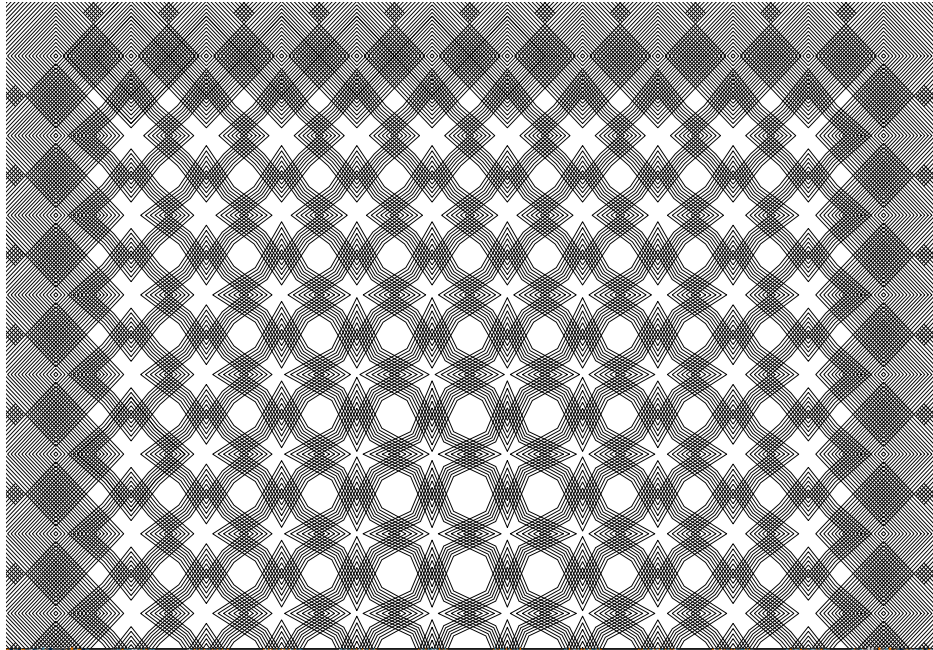


Ayush Choudhary,
MD & Creative Director,
Cocoon Fine Rugs

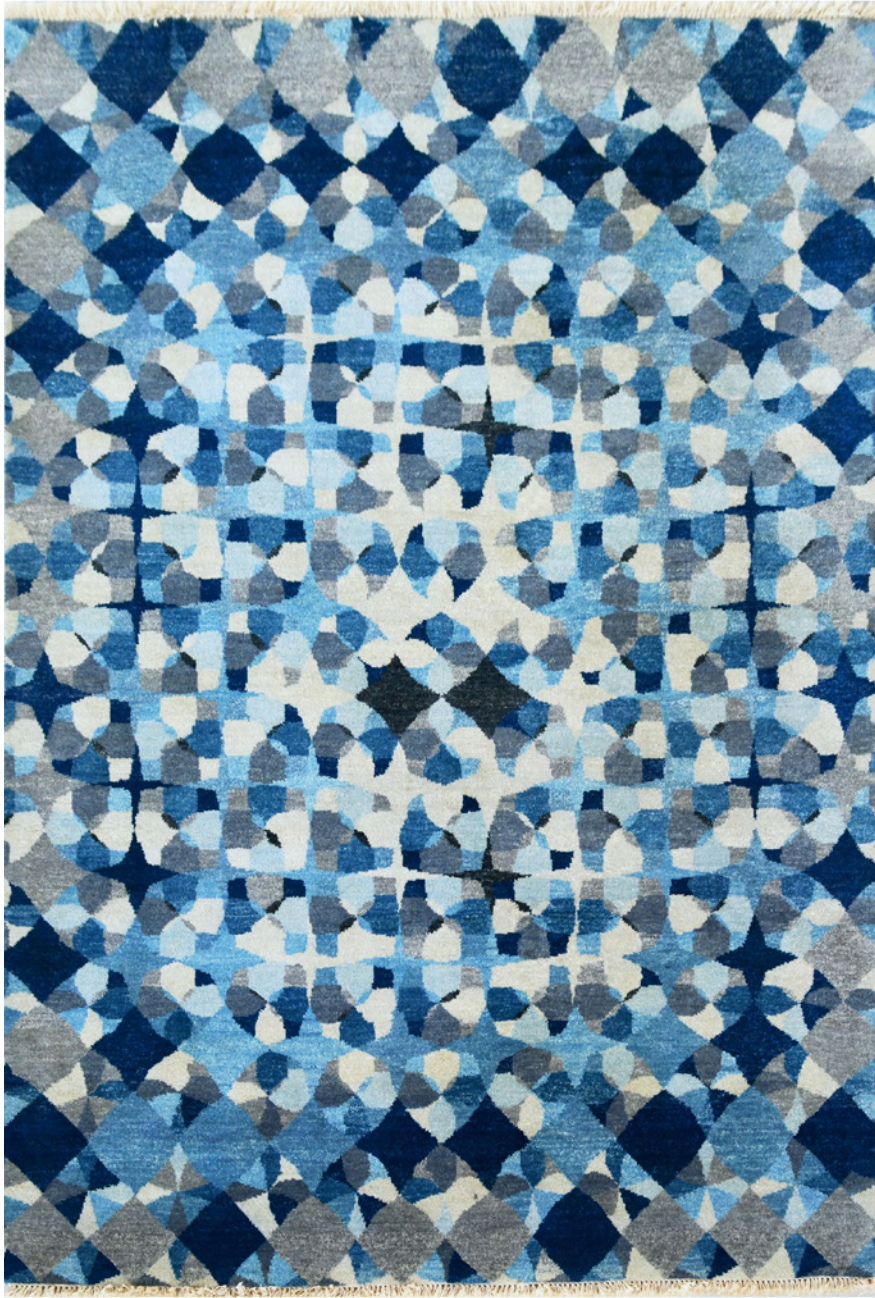
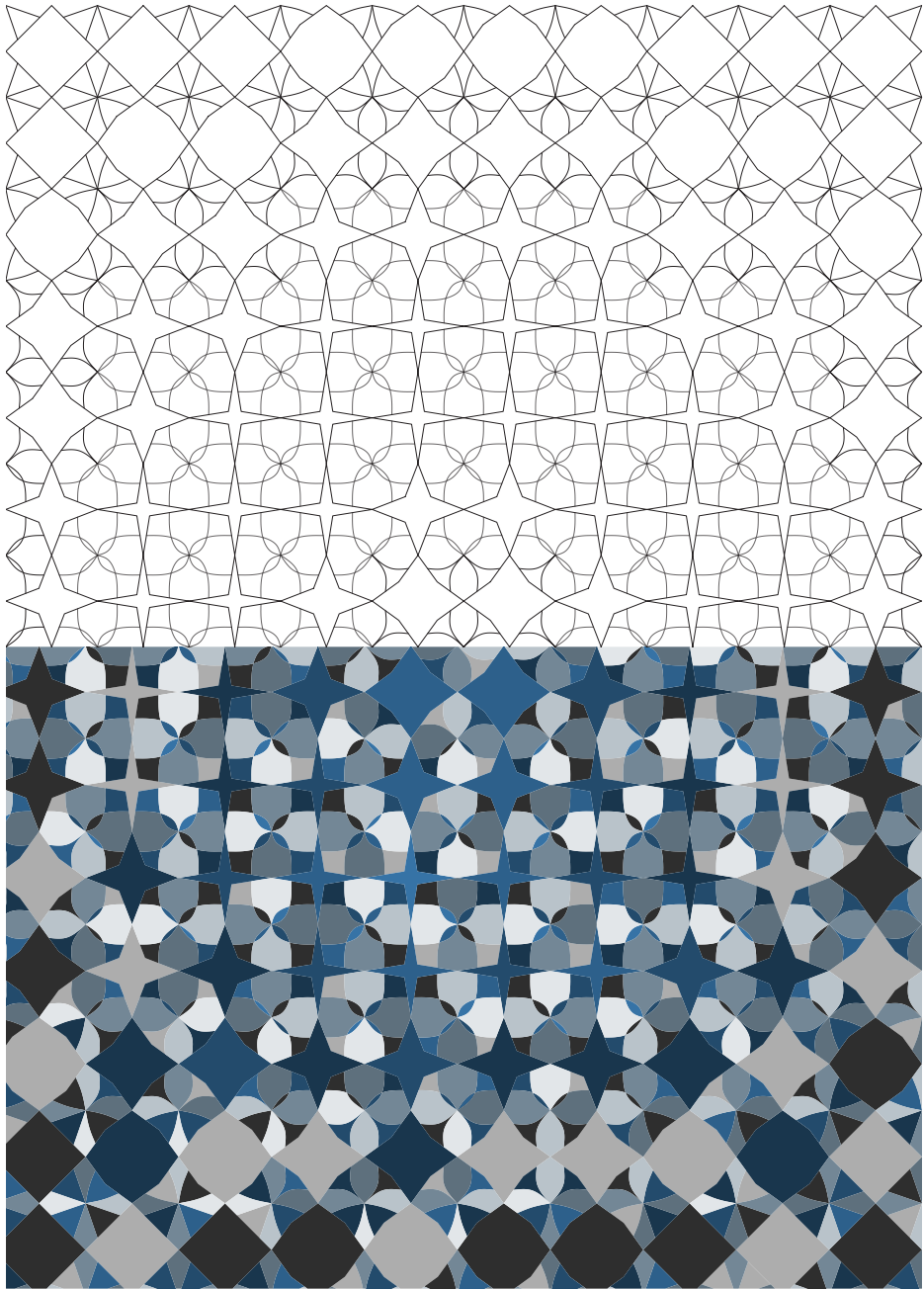


Rooshad Shroff,
Principal Designer,
Rooshad Shroff Architecture
& Design

The inspiration for 'Tessellations', Rooshad's collection for Cocoon Fine Rugs comes from traditional Indian flooring patterns of heritage bungalows, something that has always intrigues the young architect. Rooshad, a trend-setter in the industry, noticed that people are more open to having heavily patterned floorings which form the main focus within the interiors these days. This is what formed the basis for his collection for Cocoon Fine Rugs. Adding an interesting modern twist to it, Rooshad morphed these traditional patterns from one shape to another and infused the designs with a burst of bright colours making them ideal for adding additional colour within a space. The result of which is a range of unmatched rugs which would be a perfect fit for traditional and modern houses.

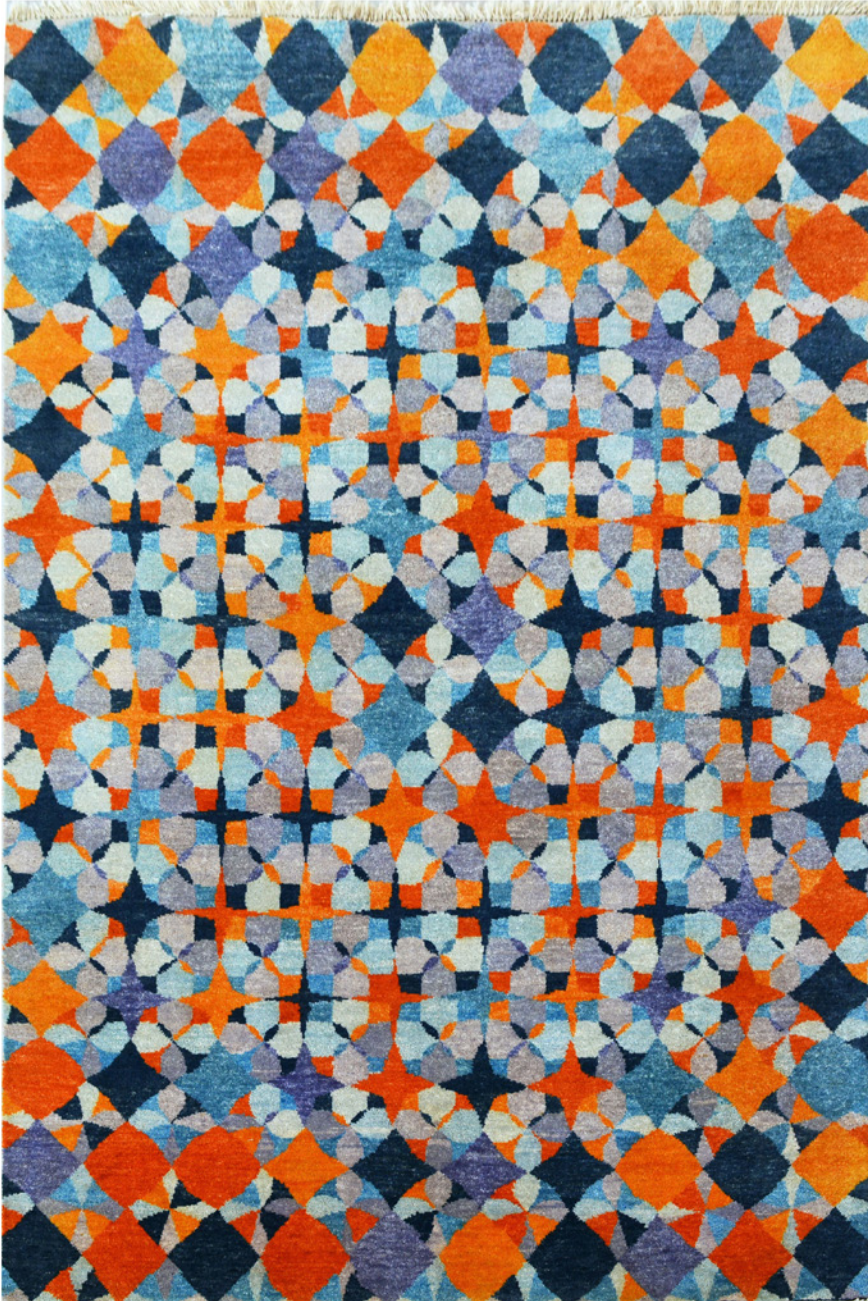
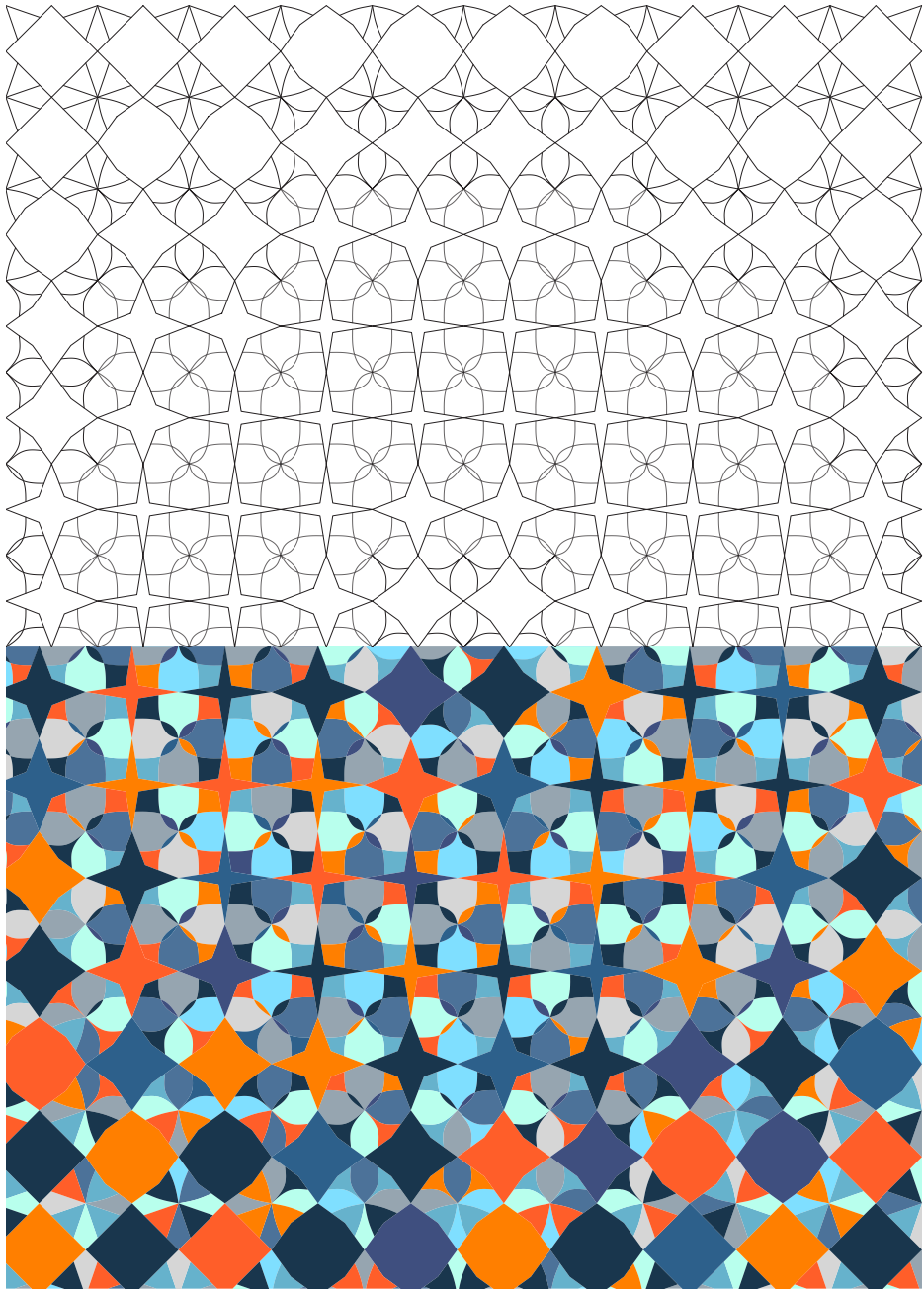


Arabesque

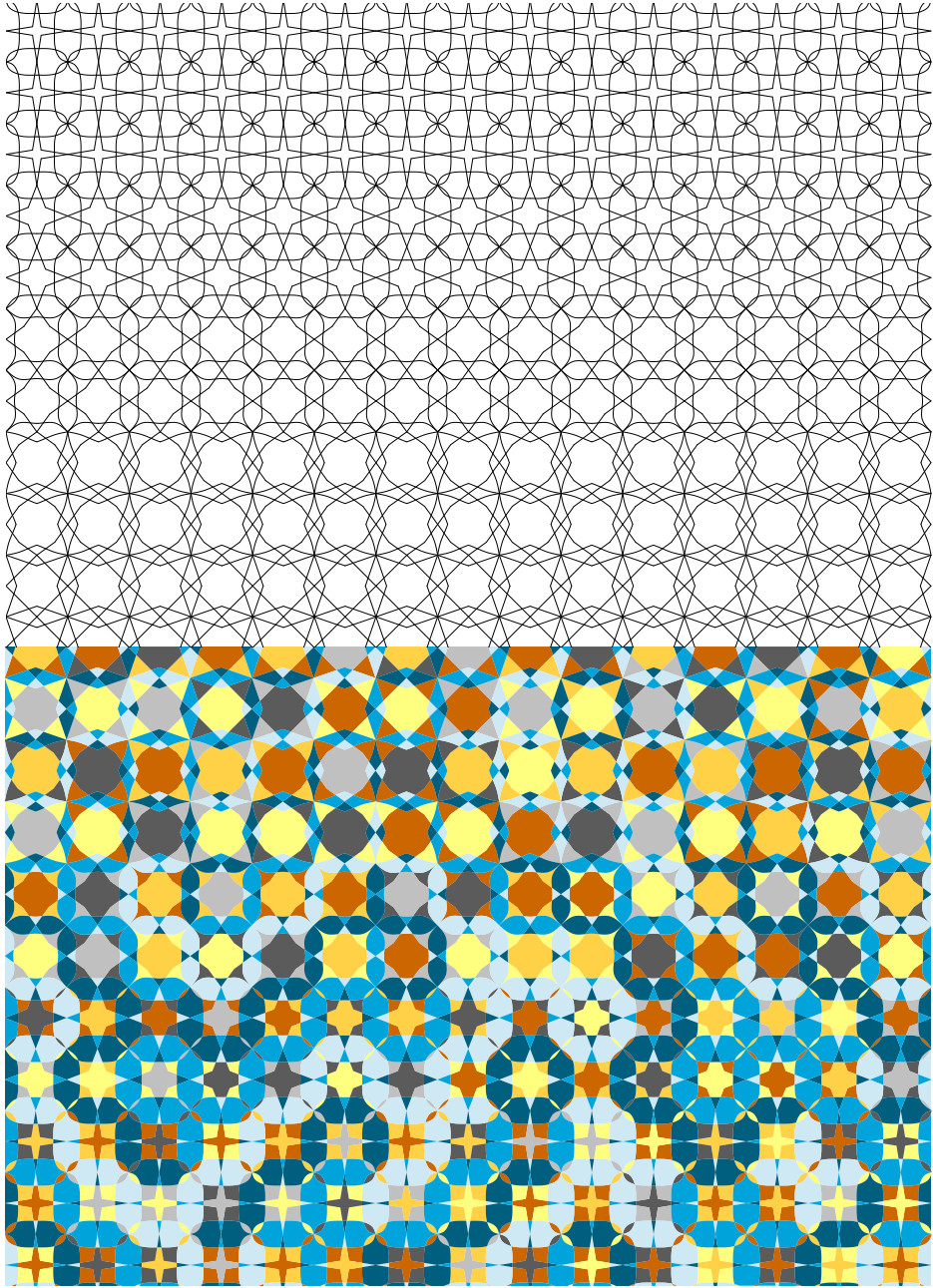


Croquis

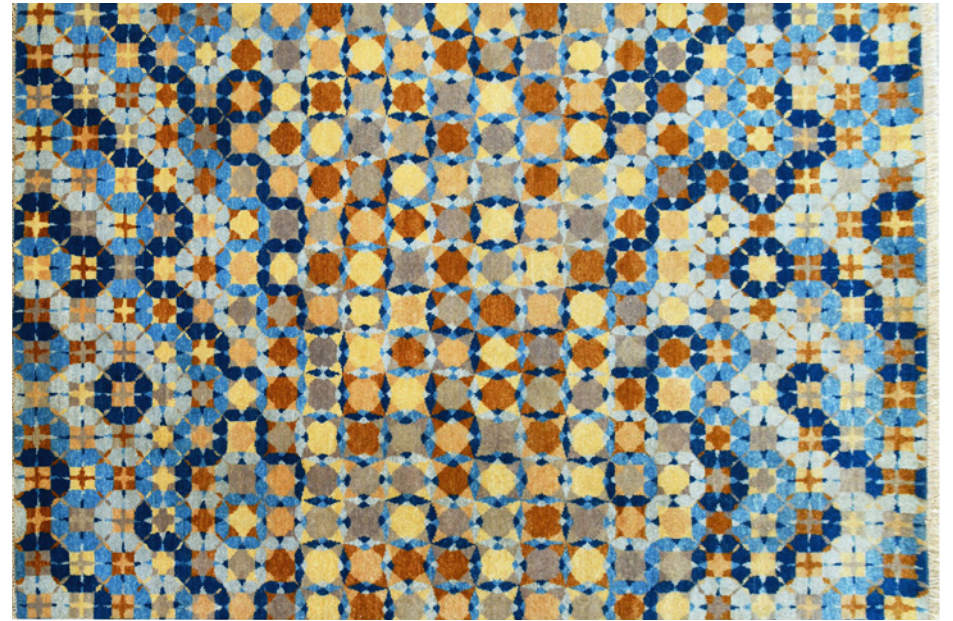




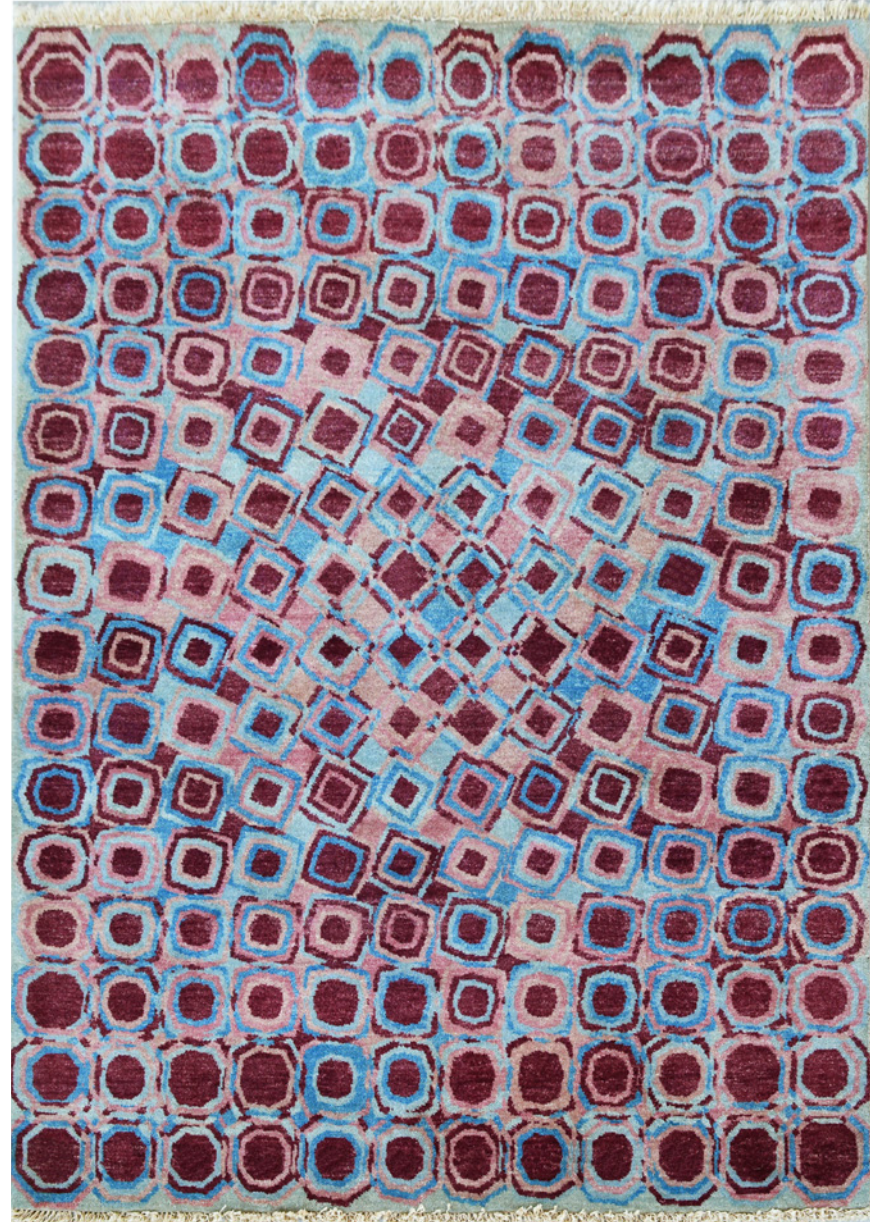
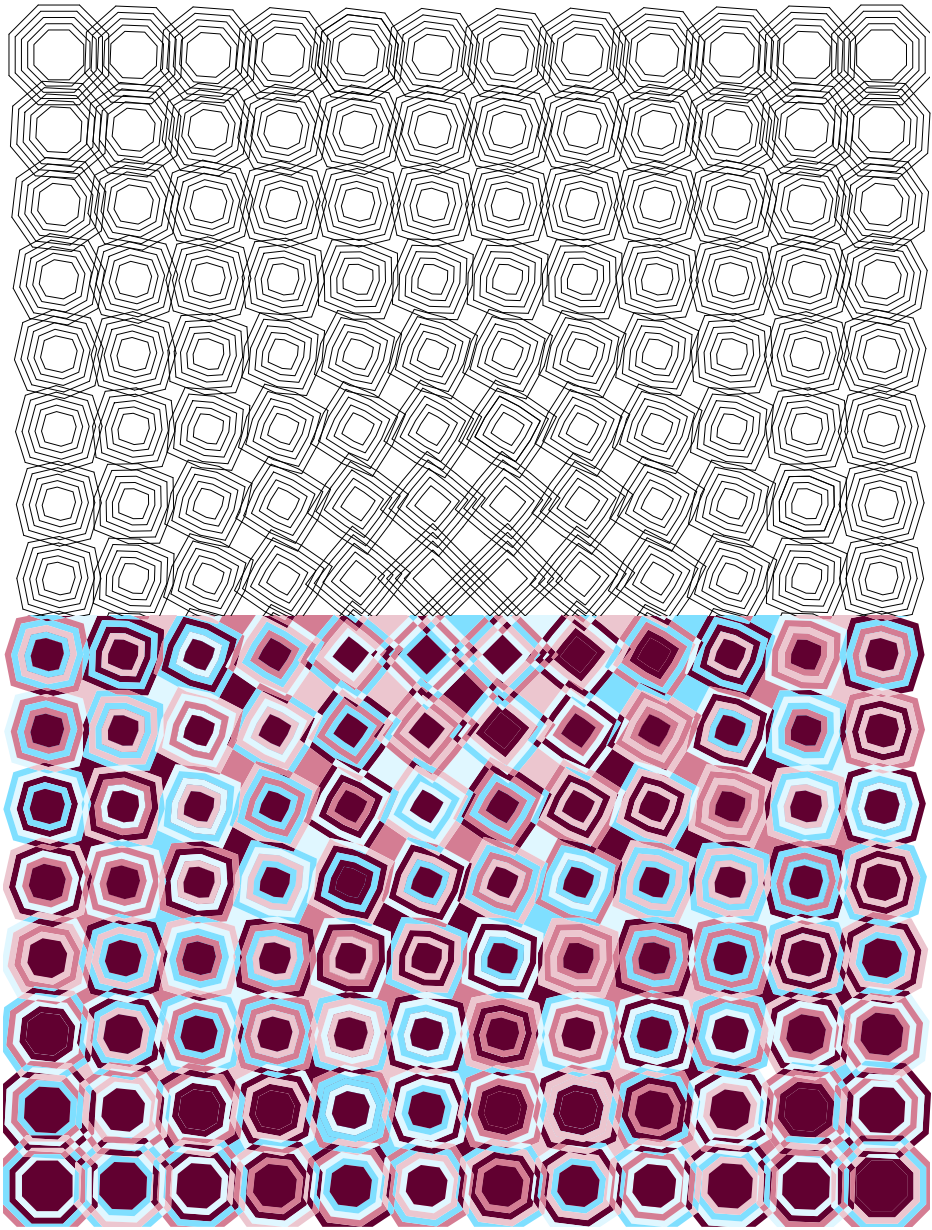
Foulard



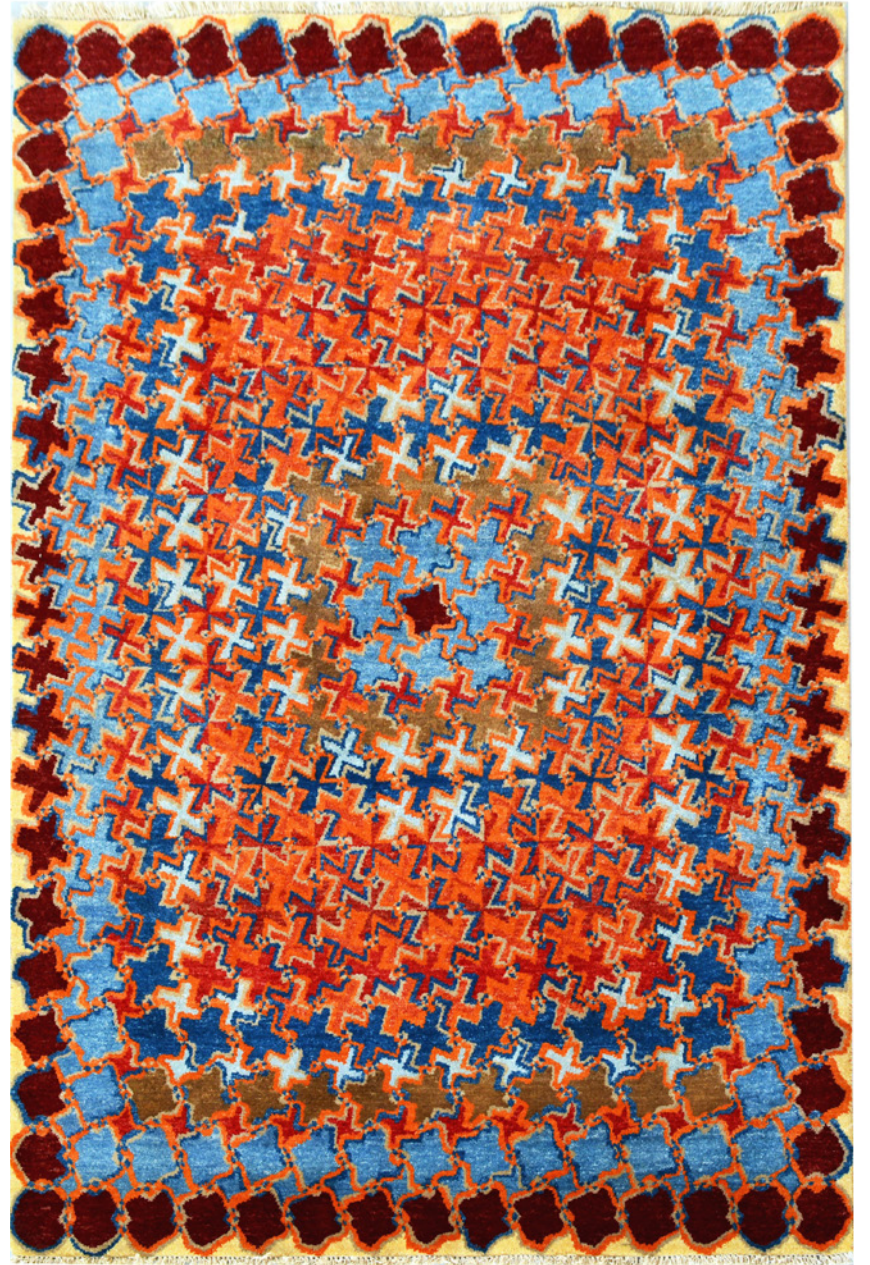
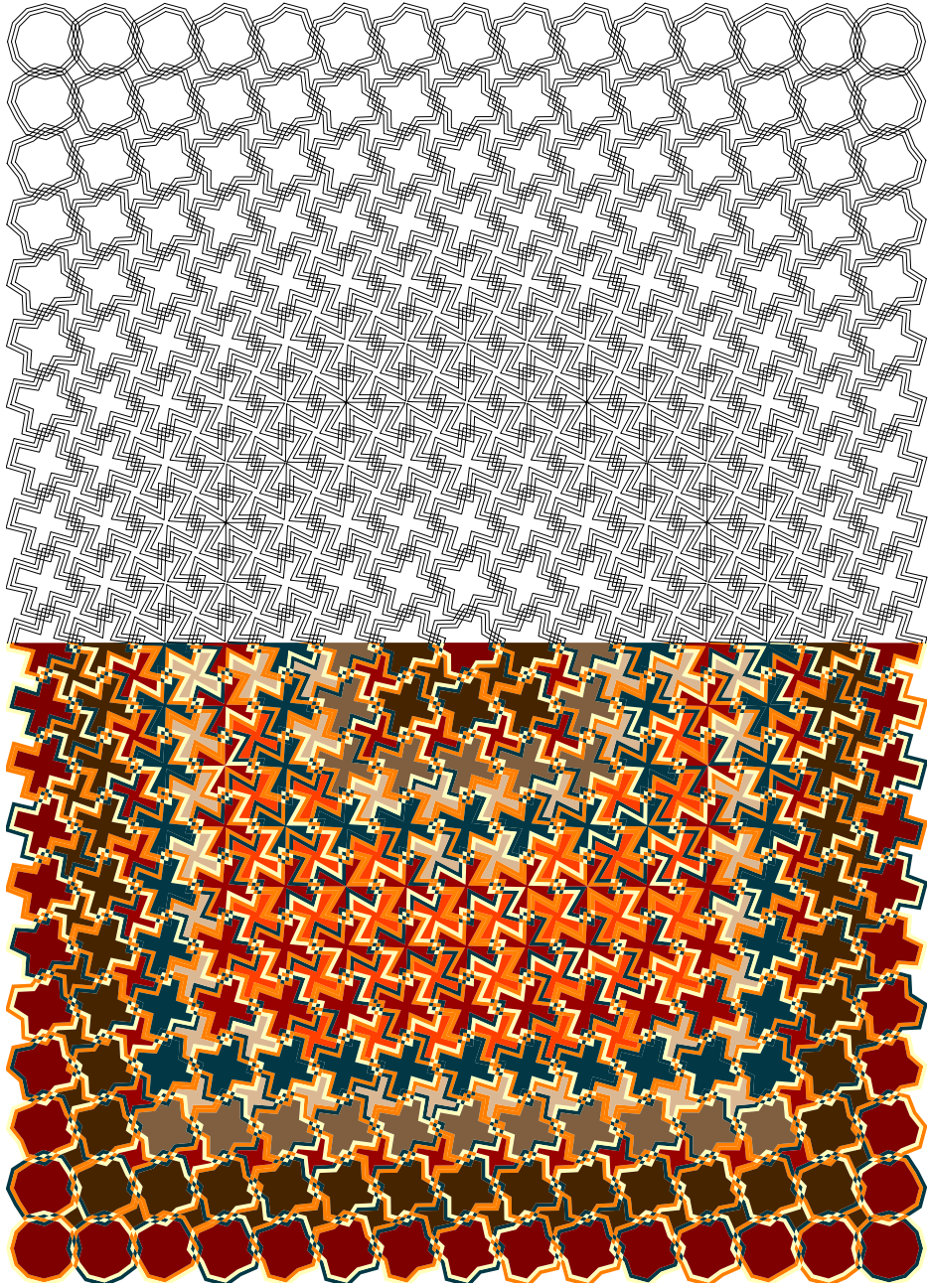
COCOON
The Art of
Living



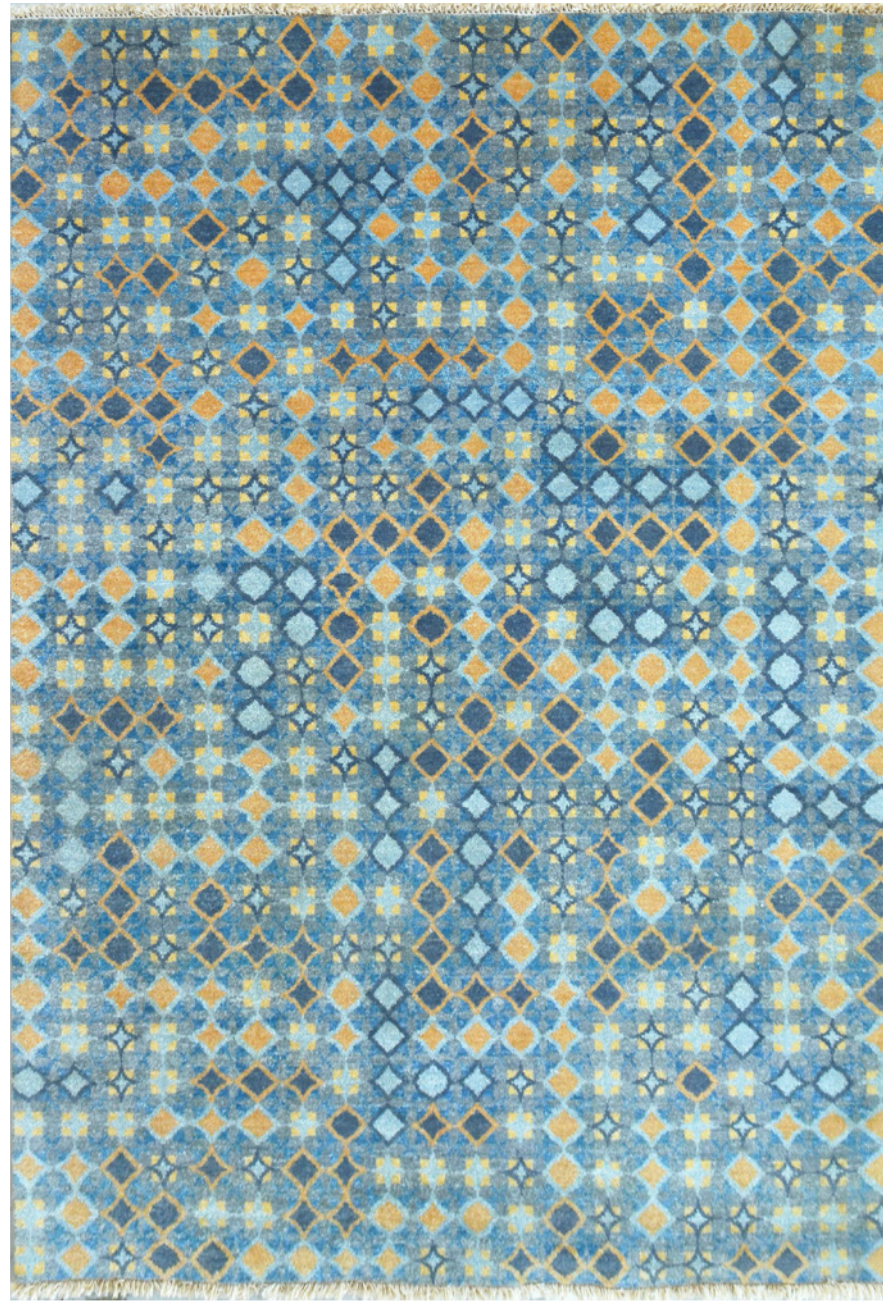
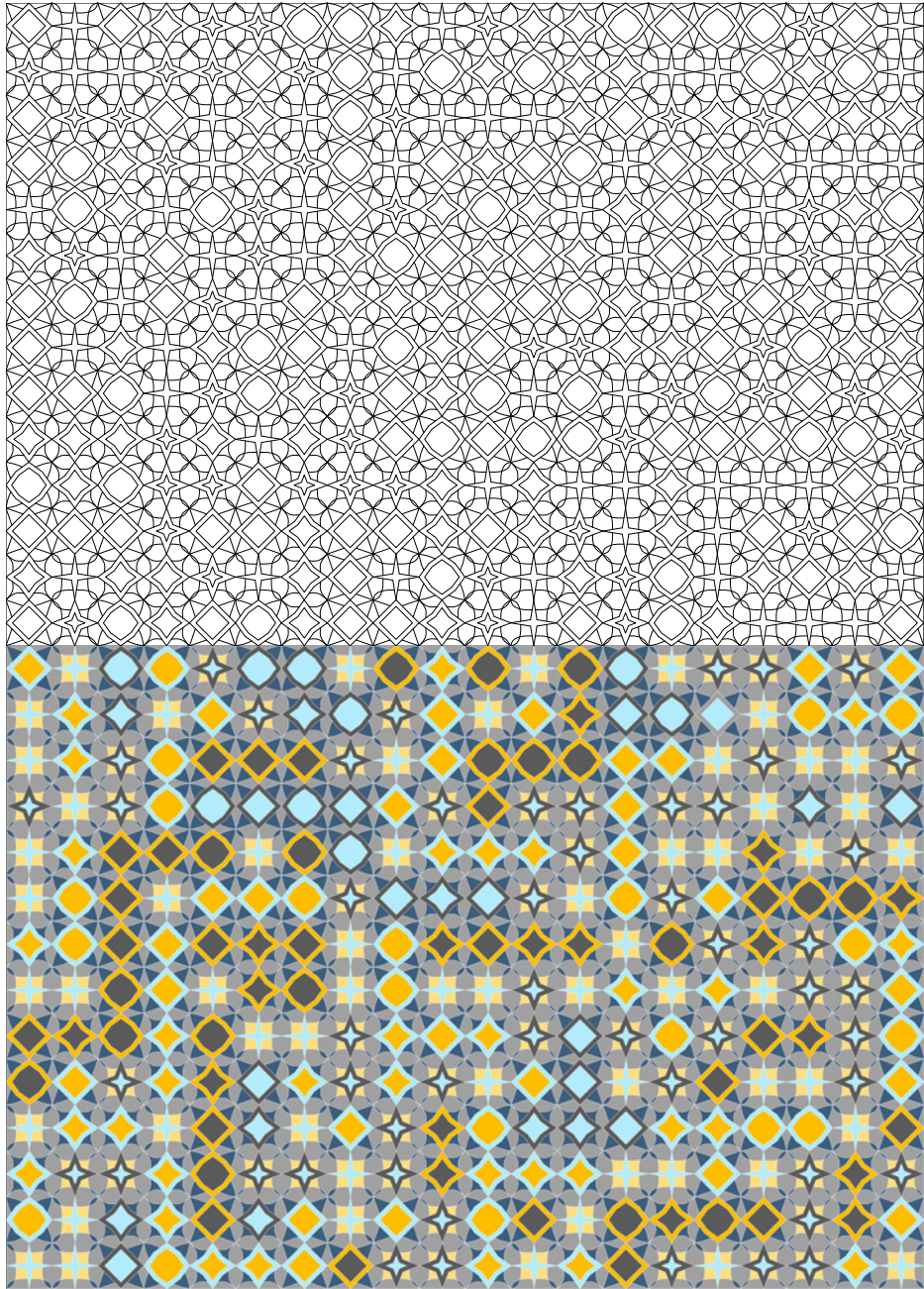
Frieze



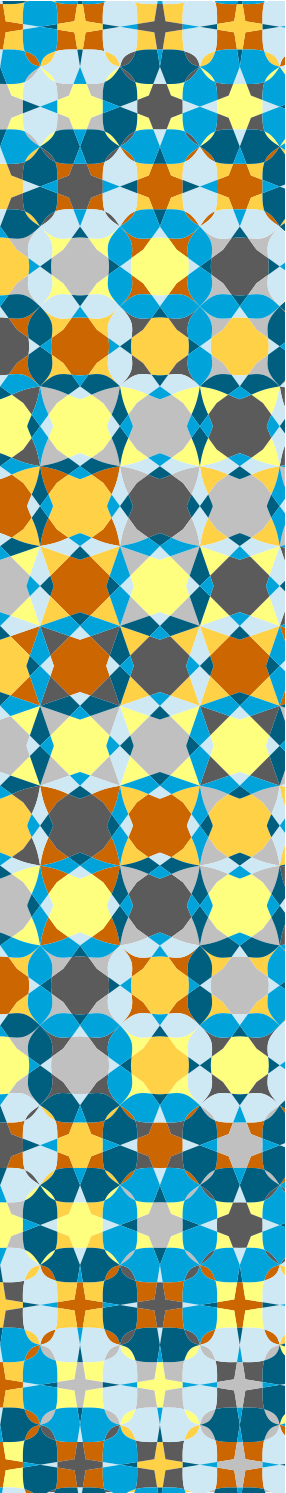
Lane's Net



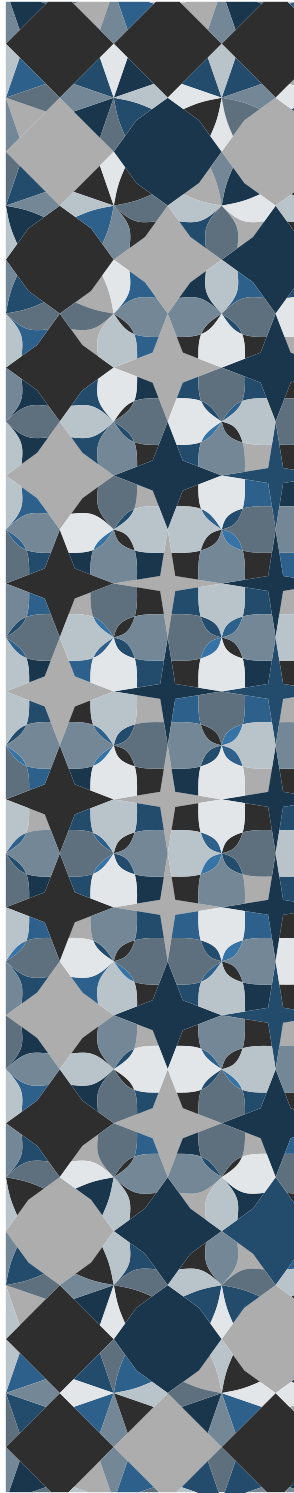
Hound's Tooth



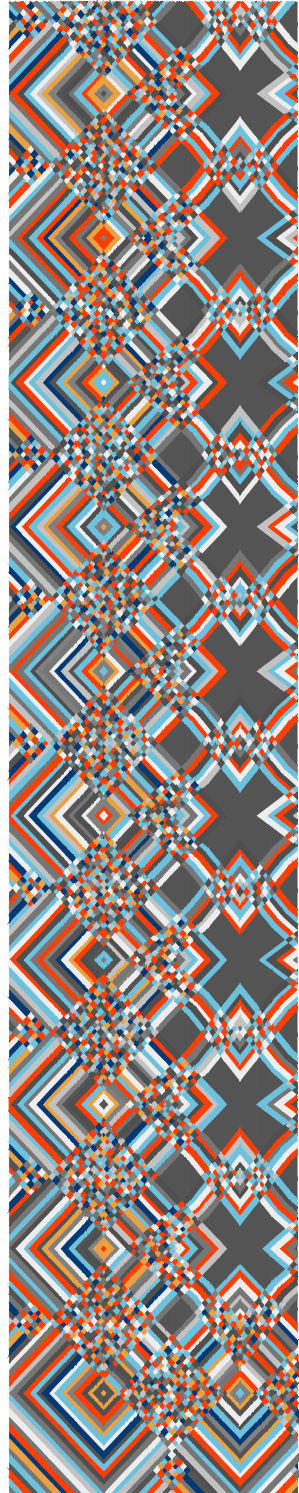
Argyle



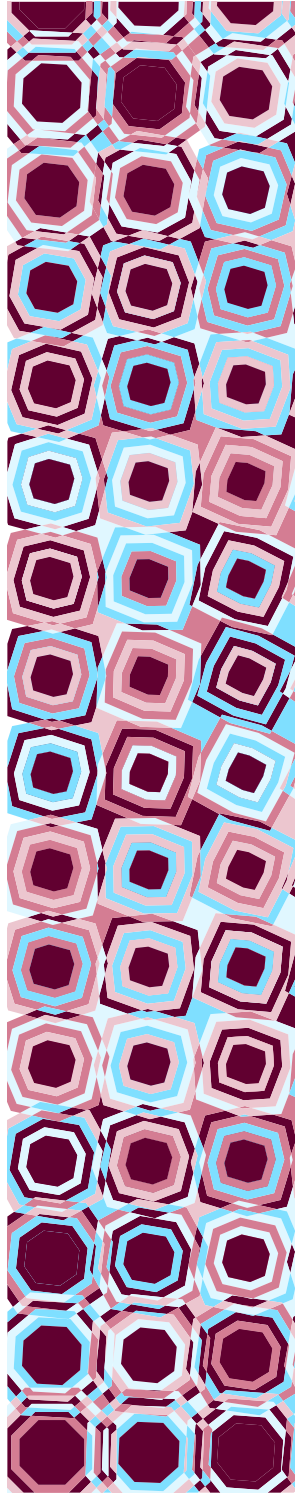
Frieze



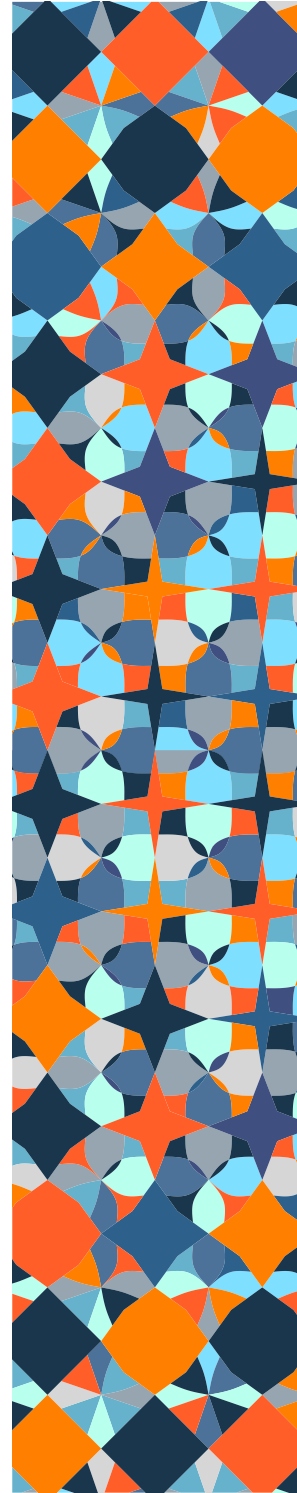
Croquis



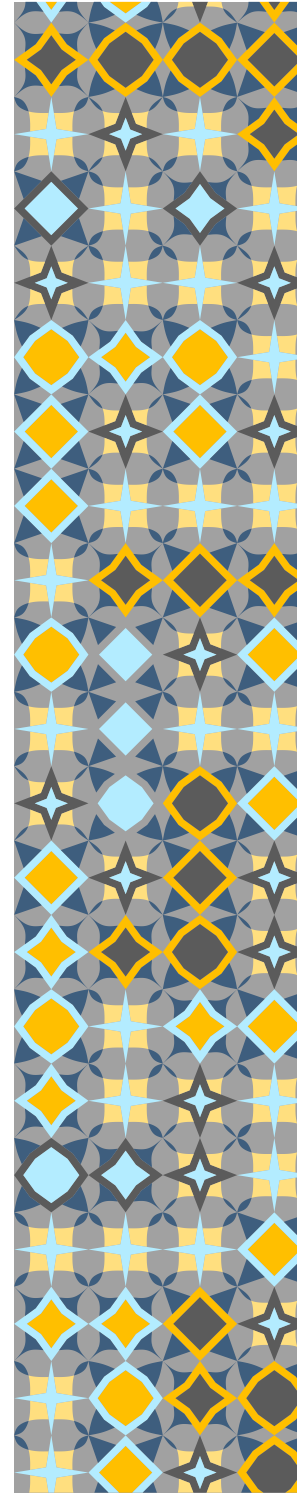
Arabesque



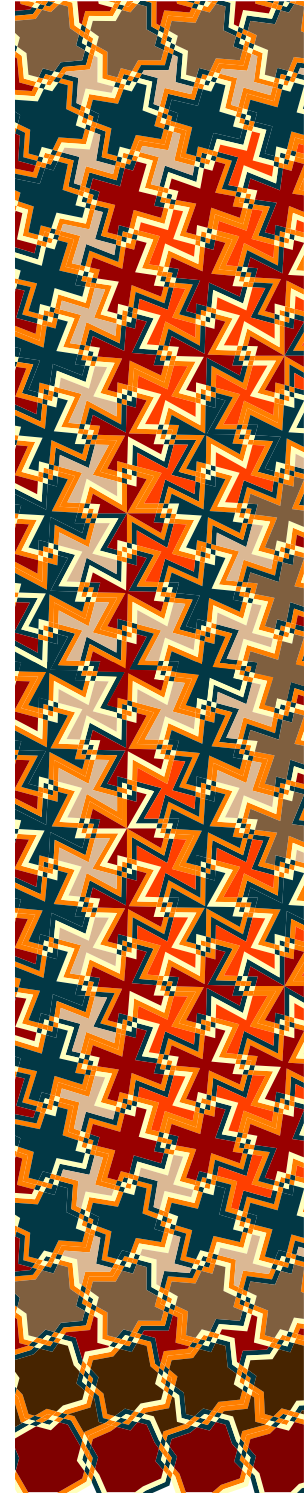
Lane's Net



Foulard



Argyle



Hound's Tooth