



CANDLE
SHACK

UPLIFTING



FRAG3421

RECIPE - 9CL

UPLIFTING IN GOLDEN WAX S41

CANDLE SHACK

DESCRIPTION

UPLIFTING

TOP NOTES - EUCALYPTUS,
LEMONGRASS

HEART NOTES - LEMONGRASS,
LEMON, GERANIUM

BASE NOTES - CITRUS PEEL

FRAG3421

INGREDIENTS FOR EACH CANDLE

1x 9cl Candle Jar
6g of Uplifting Essential Oil
69g of Golden Wax S41
1x LB1 Wick
1x 15mm Adhesive Wick Pad
1x Three Jar Wick Centering Tool

WAX

Golden Wax S41 is a super soft soybean wax that retains fragrance beautifully and burns incredibly cleanly. This plant wax has a beautiful hot throw and stability while offering excellent ease of wicking. Suitable for vegans, S41 is completely devoid of GMO and synthetic additives.

VESSEL

Our Lauren 9cl Votive glass is manufactured in Italy and meets the highest standards of clarity and tolerance.

Height: 67mm

Diameter: 56mm

Internal height: 57mm

WICK

The all-natural and premier Laminated Original Booster candle wicks are made from sappy fruit trees and responsibly sourced.

USAGE RECOMMENDATIONS

- We recommend heating S41 to 60°C to melt.
- Add the fragrance at 60°C and stir until the oil has dissolved.
- The mixture is ready to pour at around 31°C when it starts to look cloudy.
- Leave the candle to cure for at least 2 days at 20°C for the best results.

DISCLAIMER

Each report shows test results for a set of candles made by Candle Shack's R&D team for that particular recipe. The test reports are not a guarantee that all candles made to the recipe will burn in exactly the same way. Variables such as ambient temperature, air flow, or the manufacturing process can affect the burning profile of a candle, so it is recommended that candle makers conduct their own testing to ensure that they are satisfied with the performance of their product.

CANDLE SHACK

Candle Shack Ltd, Unit A, West Carron Works,
Stenhouse Road, Carron, Stirlingshire, FK2 8DR

Technical report on a test set of candles made in Candle Shack R&D department for sooting behaviour testing and fire safety testing

Date of Report: 20/03/23

Testing Period: 09/03/2023 - 17/03/2023

Sample Ref	RCP0104F-1	No. of Samples	3
Candle Name	9cl Uplifting Candle, 8% in S41		
Description	75g Soy Wax Fragranced Candle		
Fragrance	Uplifting Essential Oil	Weight per candle	6g
Wax	Golden Wax S41	Weight per candle	69g
Colour	White	Height	67mm
Wick Type	LB1	Top Diameter (ext)	56mm
Wick Positioning	Centred	Top Diameter (int)	51mm
Surface Defects	None	Base Diameter	50mm

TECHNICAL REPORT

Part 1: SPECIFICATION FOR SOOTING BEHAVIOUR

To evaluate the performance of a test set of candles in a controlled environment against the requirements of BS EN 15426:2018 (Candles. Specification for sooting behaviour)

Part 2: SPECIFICATION FOR FIRE SAFETY

To evaluate the performance of a test set of candles in a controlled environment against the requirements of BS EN 15493:2019 (Candles. Specification for fire safety)



CANDLE SHACK

Part 1: SPECIFICATION FOR SOOTING BEHAVIOUR

Requirement

When tested in accordance with clause 9 of EN 15426:2018, the average soot index per hour from three tests (samples) shall be less than 1.0/h

The room temperature during testing was 20±5°C

Wicks were trimmed to 5mm before lighting.

Cycles: 3 x 240 ± 5 min cycles with >60min pause between cycles)

Soot testing was performed in wire mesh cylinder Type 2 (Diameter: 300 ± 10 mm)

Sample Ref.	Total burn time t_m (h)	Hourly soot index S_h	Average soot index per hour S_i	Result
RCP0104F-1.1	8.00	0.00	0.05	PASS
RCP0104F-1.2	8.00	0.06		
RCP0104F-1.3	8.00	0.09		



CANDLE SHACK

Part 2: SPECIFICATION FOR FIRE SAFETY

Test Property	Test Method	Test Requirements	Result
Stability	EN 15493:2019 4.1 (Visual Check)	Candle should not tip over when placed on a 10° incline plane	PASS
Secondary Ignition	EN 15493:2019 4.2 (Visual Check)	No secondary ignition shall occur for more than 10 s	PASS
Flame Height	EN 15493:2019 4.3 (Measurement)	The flame height for all candle types, except for tea lights, shall not exceed 75mm. The flame height for tea lights shall not exceed 30mm	PASS Maximum: 20 mm
Behaviour after extinguishing	EN 15493:2019 4.5.1 (Visual Check)	After extinguishing the candle shall not spontaneously re-light	PASS
	EN 15493:2019 4.5.2 (Measurement)	The wick shall not continue to glow or smoke for an average time of more than 30 s after extinguishing	PASS Average: 2 s
Container Candles	EN 15493:2019 4.6 (Visual Check)	The container shall not crack or break at any time throughout the burning test	PASS

The room temperature during testing was 20±5°C
Wicks were trimmed to 5mm before lighting.

Candle Performance (240 ± 5 min cycles with >60min pause between cycles)

Sample Ref.	Gross Weight (g)	Total Wax Consumed (g)	*Total Burning Time (h)	Wax Consumption Rate (g/h)
RCP0104F-1.1	200.2	65.1	24.0	2.71
RCP0104F-1.2	202.4	63.0	28.0	2.25
RCP0104F-1.3	198.8	64.7	28.0	2.31

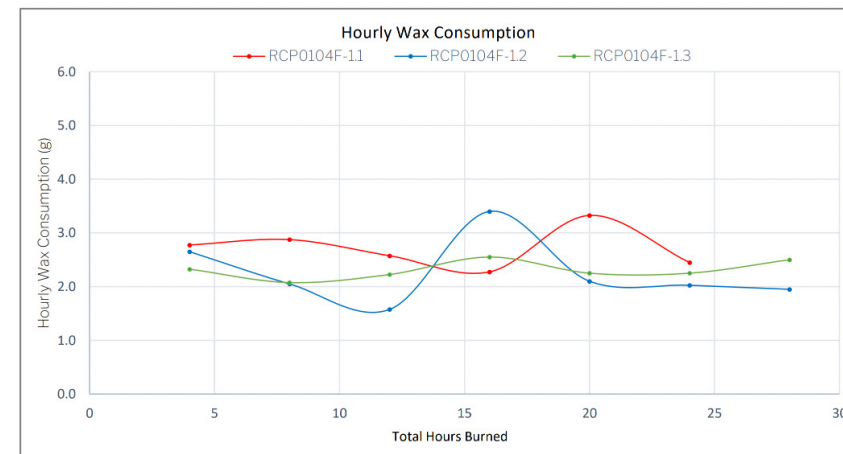
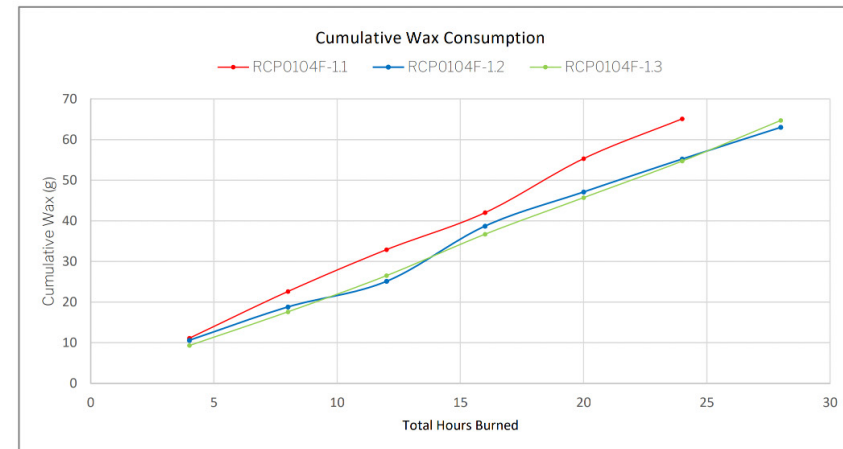
*If a candle self-extinguishes during the final burn cycle, the time of self-extinguishing is estimated.

Notes and Discussion:



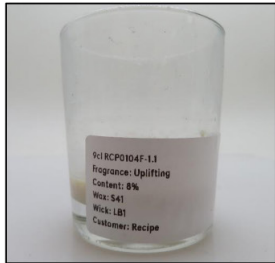
CANDLE SHACK

CHARTS



CANDLE SHACK

IMAGE GALLERY



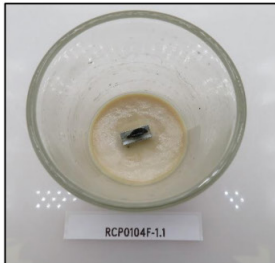
End of Burn Front - Sample 1



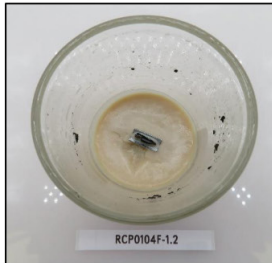
End of Burn Front - Sample 2



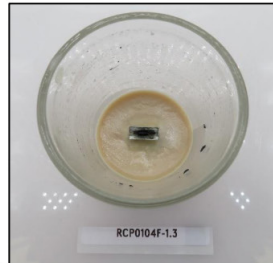
End of Burn Front - Sample 3



End of Burn Top - Sample 1



End of Burn Top - Sample 2



End of Burn Top - Sample 3

END OF REPORT

Patrycja Krajewska

Patrycja Krajewska
Candle Making Technician

