



# PMP + P6

Project Management Professional Exam  
Preparation + Primavera P6



3 Months



Instructor Led Training





# PMP CERTIFICATION

## Project Management Professional Exam Preparation Course

🕒 8 Weeks | 40 Hours 📅 Weekend or Weekdays





Click here for more details


Training Mode: 👤 Online Live Interactive | 👤🖥️ Face to Face

### Course Modules

- Module 1 : Introduction Session
- Module 2: Business Environment
- Module 3: Start the Project
- Module 4: Plan the Project
- Module 5: Lead the Project Team
- Module 6: Support Project Team Performance
- Module 7 : Close the Project





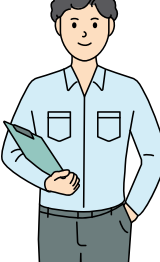
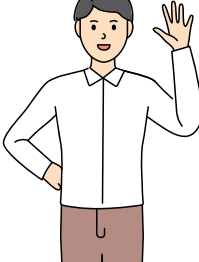



Click to View Upcoming Class Schedule



Click to Pay & Enroll Now

### Target Audience

✗	✗	✓	✓	✓	✓	✓
College Fresher	Junior Engineer, 1-4 Years Experience	Senior Engineer, 3-6 Years Experience	Team Lead 6-10 Years Experience	Manager 10-14 Years Experience	Senior Manager 15 Years above Experience	Senior Executive 16 Years above Experience
						



Team Academy Trainers have obtained the PMI- Authorized Training Partner-Instructor Badge which demonstrates the Quality and standards for training the students with the right approach and delivery methods.



# PRIMAVERA P6

## Certified Planning Engineer with Primavera P6

🕒 4 Weeks | 24 Hours 📅 Weekend or Weekdays

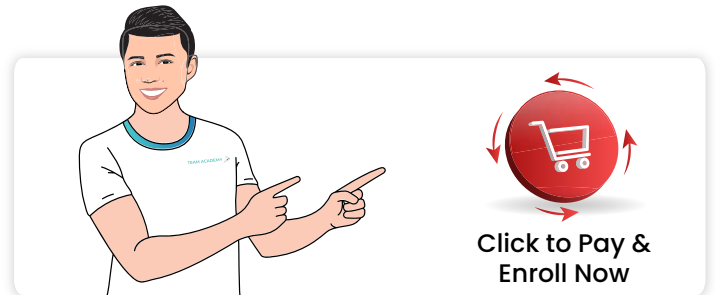
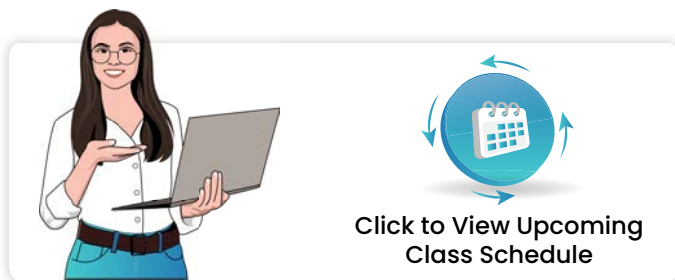


Click here for more details

Training Mode: 👥 Online Live Interactive | 🗺️ Face to Face

### Course Modules

- Module 1: Overview And Configuration
- Module 2: Structuring Projects
- Module 3: Developing the Projects
- Module 4: Managing Projects
- Module 5: Monitoring and Controlling
- Module 6: Customizing the Project Data



### Target Audience

✓	✓	✓	✓	✓	✗	✗
College Fresher	Junior Engineer, 1-4 Years Experience	Senior Engineer, 3-6 Years Experience	Team Lead 6-10 Years Experience	Manager 10-14 Years Experience	Senior Manager 15 Years above Experience	Senior Executive 16 Years above Experience



Team Academy is an ISO 21001:2018 Certified organization – Quality standard for Educational Management System. Team Academy leading to the delivery of high-quality education and continuous improvement in educational processes.

# Project Management Courses



**PMP - Project Mgmt Professional**

🕒 36 Hours 📅 Weekend or weekdays

**\$494.00**



**Certified Planning Engineer with Primavera P6**

🕒 30 Hours 📅 Weekend or weekdays

**\$398.00**



**PMI - CAPM Certification**

🕒 36 Hours 📅 Weekend or weekdays

**\$398.00**



**Project Management Fundamentals**

🕒 36 Hours 📅 Weekend or weekdays

**\$398.00**



**Microsoft Project Server**

🕒 24 Hours 📅 Weekend or weekdays

[Discuss with Course Counsellor](#)



**Microsoft Project certification - MCP**

🕒 24 Hours 📅 Weekend or weekdays

[Discuss with Course Counsellor](#)

**Discuss with our Course Counsellor**

[Schedule a Call](#)



# ICT Training Courses



## Chat GPT & AI

No Code AI Productivity upscale for Business & IT Users

🕒 2 Months 📅 Weekend or weekdays

**\$699.00**



## Microsoft Power BI Data Analytics

🕒 30 Hours 📅 Weekend or weekdays

**\$499.00**



## MS Office - Word, Excel, Power Point

🕒 30 Hours 📅 Weekend or weekdays

**\$205.00**



## Professional Business English Communication

🕒 30Hours 📅 Weekend or weekdays

**\$412.00**



## Data Science & Machine Learning

🕒 50 Hours 📅 Weekend or weekdays

**\$686.00**



## Programming for Beginners - C, C++ & Java

🕒 50 Hours 📅 Weekend or weekdays

**\$604.00**



## Python Programming Foundations

🕒 24 Hours 📅 Weekend or weekdays

**\$494.00**



## ITIL – Foundations & Practitioner

🕒 24 Hours 📅 Weekend or weekdays

**Discuss with Course Counsellor**

## Risk Management Courses



**ISO 31001**

🕒 30 Hours 📅 Weekend or weekdays

[Discuss with Course Counsellor](#)



**PMI- Risk Management Professional**

🕒 30 Hours 📅 Weekend or weekdays

**\$398.00**

## Quality Management Courses



**Certified Professional in Health Care Quality**

🕒 30 Hours 📅 Weekend or weekdays

**\$686.00**



**Lean Six Sigma - Green and Black Belt**

🕒 30 Hours 📅 Weekend or weekdays

[Discuss with Course Counsellor](#)

## Agile Courses



**PMI - Agile Certified Professional**

🕒 24 Hours 📅 Weekend or weekdays

[Discuss with Course Counsellor](#)



**Click to WhatsApp Now**

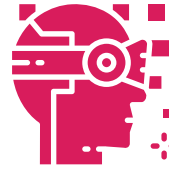
# Entrepreneurship & Business Management Courses



## Entrepreneurship & Business Management

🕒 90 Hours 📅 Weekends

[Discuss with Course Counsellor](#)



## AI for Entrepreneurship & Business Management

🕒 2 Months 📅 Weekends

[Discuss with Course Counsellor](#)



## Digital Media Marketing

🕒 20 Hours 📅 Weekends

[Discuss with Course Counsellor](#)



[Click to WhatsApp Now](#)

# Enterprise Governance Courses



## Program and Portfolio Management

🕒 24 Hours 📅 Custom Schedule

[Discuss with Course Counsellor](#)



## PMO Administration

🕒 24 Hours 📅 Custom Schedule

[Discuss with Course Counsellor](#)

To Download

All Program Catalogue

[Click Here](#)





# Artificial Intelligence - Advanced Training Program



## AI For Project Management & Planning

 2 Months  Weekend or weekdays

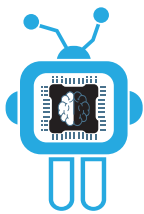
**\$699.00**



## AI For Finance & Portfolio Management

 2 Months  Weekend or weekdays

**\$699.00**

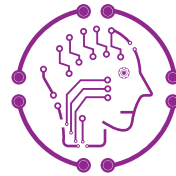


## AI For Operational Excellence

HR, Marketing, Sales & Risk Management

 2 Months  Weekend or weekdays

**\$699.00**



## AI For Entrepreneurs & SMEs

 2 Months  Weekend or weekdays

**\$699.00**



## AI For Digital Media Marketing

 2 Months  Weekend or weekdays

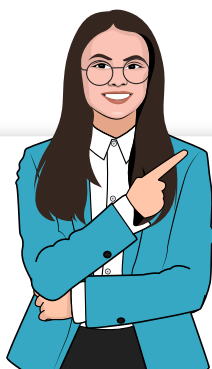
**\$699.00**



## AI For Academic Research, Educators & Trainers

 2 Months  Weekend or weekdays

**\$699.00**



[Click here for Quick Enrollment](#)







# OUR PARTNERS



# OUR CLIENTS



**1200+**  
Students  
Graduated so far



**500+**  
Jobs Fast  
Tracked



**25+**  
Years of IT  
experience

## About US

### Project Management



- ▶ Specialised in Planning, Integration, Analytics, Quantitative & Qualitative Project Management

### Program Management



- ▶ Managing Integration Complexities & Risks between large projects
- ▶ Enterprise Project Management System

### Analytics & Reporting



- ▶ Specialised in Data gathering, Analytics & Representation
- ▶ Excellent Communication & Leadership
- ▶ Present Ideas, conduct Conferences and Mentor sr. mgmt on projects & Program process



## PRINCIPAL COUNSELOR

### DINESH R M

MBA FINANCE, MCP, PMP



Experienced Portfolio Program & Project Manager



PMI Authorized Training Partner - Instructor



Mentor & Coach for Project Management, Risk Management, Data Science, Entrepreneurship & Business Management

# CONNECT WITH US

## TEAM ACADEMY

USA: +1 307 289 56564

Singapore: +65 3158 0540

Malaysia: +60 1546 000058

Turkey: +90 212 900 3578

Philippines: +63 2823 12761

Qatar: +974 7079 7089

Saudi Arabia: +966 800 8803036

Bahrain: +973 6500 9724

UAE: +971 800 06512056

 [info@teamacademy.net](mailto:info@teamacademy.net)

 [www.myteamacademy.com](http://www.myteamacademy.com)



Click to WhatsApp Now