



# Learning Management System Implementation



# Service Description

Our Learning Management System (LMS) Implementation service is tailored to educational institutions, corporations, and training organizations seeking to establish or enhance their online learning platforms. We specialize in custom LMS solutions that facilitate effective course delivery, learner engagement, and performance tracking.

65+ LMS  
Implementations

320+ Custom  
Features Integrated

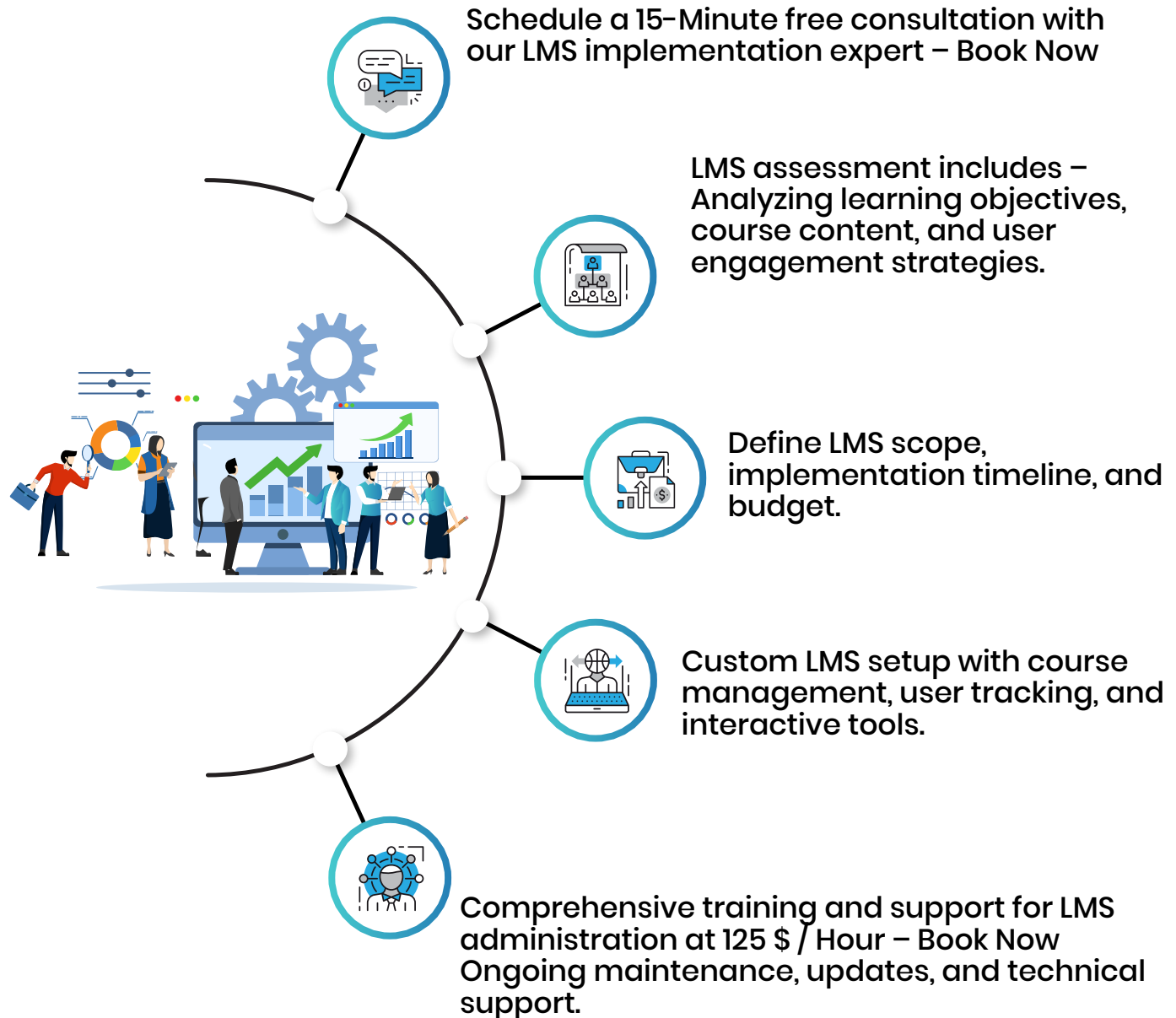
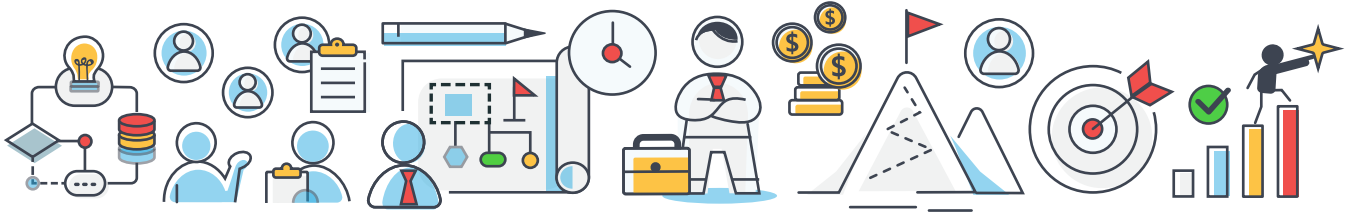
89% Improvement in  
Learning Outcomes



**BOOK FREE  
CONSULTATION**



# About Learning Management System



## LMS - Features & Benefits



Customized LMS setup to support diverse learning environments and instructional strategies.



Integration of interactive tools, multimedia content, and assessment features for an engaging learning experience.



Focus on user-friendly interfaces for learners and educators, with robust data tracking and reporting capabilities.



Streamlines the delivery and management of educational content.



Facilitates flexible and accessible learning opportunities for a diverse audience.



Enhances learner engagement and retention through interactive tools and resources. Provides detailed analytics for tracking learner progress and course effectiveness.



# Our Implementation Approach

Conduct a thorough needs analysis to understand your educational goals and technical requirements.



Design a tailored LMS solution that aligns with your instructional approach and learner needs.



Implement the LMS with essential features such as course management, user enrollment, and assessment tools.



Test the LMS for usability, functionality, and compatibility with existing systems.



Provide ongoing support, maintenance, and updates to ensure the LMS remains effective and up-to-date.

Deploy the LMS and provide training for educators and administrators.



# About Us



## IT & Business Solutions

TEAM Solutions is a Leading Professional B2B service Provider in Qatar, we are Passionate about empowering business using cutting edge technology consulting and providing real time business solutions.



## Mentorship & Training

We are specialized B2B Offline / Online training provider on the technology, enterprise software's, analytics & Project management courses.

## PRINCIPAL COUNSELOR

### DINESH R M

MBA FINANCE, MCP, PMP



Experienced Portfolio Program & Project Manager



PMI Authorized Training Partner - Instructor



Mentor & Coach for Project Management, Risk Management, Data Science, Entrepreneurship & Business Management

## TRAINER CREDENTIALS >>>







**OUR ACHIEVEMENTS & ACCOLADES**



**OUR CLIENTS**



**1200+**  
Students  
Graduated so far










**500+**  
Jobs Fast  
Tracked



**25+**  
Years of IT  
experience

## FAQs:

-  **What roles do our LMS implementation specialists play?**  
Our specialists focus on LMS design, feature integration, content management, and providing training and support for system administrators.
-  **Engagement Type and Pricing?**  
Flexible engagement with a free 15-minute consultation, followed by services at 125\$/hour or a fixed-price contract based on the implementation scope.
-  **Why invest in a professional LMS?**  
A professional LMS offers a structured, efficient platform for delivering education and training, enhancing learning experiences, and tracking performance.
-  **What is the role of an LMS implementation specialist?**  
An LMS implementation specialist is responsible for setting up an LMS that meets educational objectives, is user-friendly, and provides valuable data insights.
-  **How to book our service?**  
Easily book our services:  
Free initial consultation – [Click here](#).  
Detailed LMS implementation assessment (125\$ / Hour)
-  **Can we integrate the LMS with your existing systems?**  
Yes, we specialize in integrating LMS platforms with existing educational or corporate systems for seamless operation and data flow.
-  **Is LMS implementation complex?**  
Our team simplifies the complexity of LMS implementation, ensuring a smooth setup and an intuitive user experience.







## FAQs:

- **What scenarios are ideal for LMS implementation?**  
Ideal for educational institutions, corporate training programs, and any organization looking to deliver structured online learning.
- **How does an LMS enhance learning and training?**  
An LMS provides a centralized platform for course delivery, learner engagement, and performance tracking, improving the overall effectiveness of educational programs.
- **What are the capabilities of our LMS solutions?**  
Our solutions include course creation and management, user enrollment, interactive tools, multimedia integration, and detailed analytics.
- **Can Team Academy assist in all aspects of LMS implementation?**  
Yes, our team's expertise in educational technology ensures a comprehensive approach from design to deployment and ongoing support.
- **How to ensure the success of an LMS?**
  - Align the LMS with your educational goals and learner needs.
  - Ensure the platform is user-friendly and accessible.
  - Provide comprehensive training and resources for educators and learners.
  - Continuously evaluate and update the LMS to meet evolving educational requirements.



# CONNECT WITH US

TEAM ACADEMY



Contact Us

USA: [+1 307 289 56564](tel:+130728956564)

Saudi Arabia: [+966 800 8803036](tel:+9668008803036)

Singapore: [+65 3158 0540](tel:+6531580540)

Turkey: [+90 212 900 3578](tel:+902129003578)

Malaysia: [+60 1546 000058](tel:+601546000058)

Philippines: [+63 2823 12761](tel:+63282312761)

Qatar: [+974 7079 7089](tel:+97470797089)

UAE: [+971 800 06512056](tel:+97180006512056)

Bahrain: [+973 6500 9724](tel:+97365009724)



[info@teamacademy.net](mailto:info@teamacademy.net)



[www.myteamacademy.com](http://www.myteamacademy.com)

Click below for Whatsapp

