



CSTAR

23
24

CSTAR INTERNATIONAL INC

2023//////////2024

PROFESSIONAL HOT FIX TRANSFER
MANUFACTURER

CSTAR

CSTAR INTERNATIONAL INC

CHINA
ADDRESS: Room 203, 2nd Floor, Building 1, NO.301
Binxing Road, Binjiang District, Hangzhou, China
TEL: 86-571-85333051

U.S.A
ADDRESS: 1520 South Mary Ave Sunnyvale, CA, 94087, USA
TEL: (408)705-4409
EMAIL: info@cstarintl.com

Heat transfer materials: /Rhinestone
/ Stud
/ Nailhead
/ Glitter
/ PU
/ Flock
/ Fabric
/ TPU

WE SPECIALIZE IN MANUFACTURE

Customized motifs service
Hot fix transfer



ABOUT US



CSTAR is a leading provider of heat transfer products such as rhinestones, glitter, foil, and much more! With over 10 years of manufacturing experience, our company offers knowledgeable and competitive services to customers worldwide with our design team and our California based office.

We provide a range of services from custom design to final product. Our professional design team can recreate custom designs into a digital layout and quotation within 24 hours, with no set-up fees. Our custom minimum starts as low as 24 pieces per design for most materials. After layout approval, the final product will be delivered within 3-5 business days.

As a member of PPAI and ASI, we follow PPAI's Code of Conduct in our standards of safety, quality, and integrity. If necessary, we are happy to provide a copy of the code and/or U.S. CPSIA testing report. Our China facilities are open for inspections, and we warmly welcome you to visit!



CSTARINTL.COM

CSTAR

CSTAR has been in the heat transfer industry for over 10 years providing custom heat transfer products and services.

We are an approved vendor for several major companies like Universal Studios...with more than thousands of satisfied customers around the world.



FREE DESIGN



Our professional design team provides fast design services within 24 hours with no set-up fee.

FREE SAMPLE



A pre-selected sample set can be provided to you upon request.

FAST PROCESSING



After payment, most orders can be shipped out in 2-3 business days.

Easy 1-2-3 step process

Step 1



Submit artwork in any format

Step 2



Approve digital layout

Step 3



Confirm invoice and submit payment

FAST SHIPPING



3-5 day shipping through UPS, DHL, or FedEx.

CUSTOMERS



US office based in California available on call during normal business hours.

5A WASHING TEST



We have a industrial washing test equipment and can provide wash test per customer specifications.

01 ABOUT CSTAR

03 CSTAR SERVICE

NEW PRODUCTS 07

09 HOT FIX MATERIALS

BEADS

- 11 RHINESTONE
- 13 ALUMINUM STUDS
- 17 SEQUIN



VINYLS

- 19 HOT FIX GLITTER
- 21 HOT FIX TPU GLITTER
- 22 THERMOCHROMIC MATERIALS
- 23 HOT FIX FOIL
- 25 STRETCHABLE FOIL

- 27 HOT FIX PU
 - Glow in the Dark PU
 - Iridescent Luminous PU
 - Patterned Reflective PU
 - Sand & Brush PU

FABRICS

- 31 HOT FIX FLOCK
- 33 HOT FIX FABRIC A
- 35 HOT FIX FABRIC B & LACE
- 37 HOT FIX FABRIC C

PRINTING CRAFTS

- 39 HEAT TRANSFER PRINT
- 41 PRINTING PU
- 43 SUPER SOFT PRINTABLE FLOCK
- 44 OTHER PRINTABLE FABRICS
- 45 PRINTABLE GOLD & SILVER
- STRETCHABLE FOIL
- 46 PRINTABLE GLITTER

PATCHES

- 47 EMBROIDERY PATCH
- 48 SPECIAL PATCH
- 49 SILICONE TRANSFER

HEAT PRESS SERVICE

NEW

CUSTOM TRANSFER
DIRECT TO FILM (DTF)

PRODUCTS



DIRECT TO FILM(DTF)

A great alternative to screen printing!

- ◆ Transfers are made using a new technology that prints images and designs on a specialized film material.
- ◆ Priced by design size instead of the number of colors so we can provide full color heat transfers with lower minimums compared to screen printing.

CUSTOM DECALS

Sticker decals for everyday things!

- ◆ Apply on any smooth surface such as paper, plastic, wood, glass, metal, and ceramics.
- ◆ Easy to apply and durable for daily use indoors and outdoors.
- ◆ Great for simple and complex designs like logos, gradients, patterns, quotes, etc.

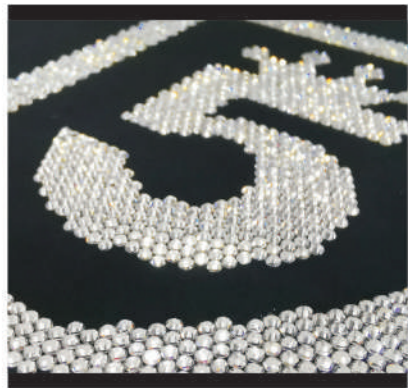


How to apply:

- Make sure the smooth surface is clean and dry before application.
 - Slowly peel the white paper backing away and the sticker will stay adhered to the clear transfer tape.
 - Place the sticker on the surface and run a squeegee or credit card over it.
 - Peel the clear transfer tape away starting from the corner and discard. Enjoy!
- Note: Cannot be washed by dish-washing machine.**



Hot Fix Materials



RHINESTONE

We carry two types of rhinestones. Classic lead free is our most popular and economical choice. Low lead MC, or machine cut, rhinestones are shinier with more facets. We also carry resin rhinestones.



STUDS

Made out of aluminum, we offer rhinestuds, domestuds, and nailheads. These come in a wide selection of colors and shapes. These are lighter in weight and cost less than rhinestones.



PU

A classic vinyl material, soft to the touch with some stretch. Choose from styles such as flat, neon, glow-in-the-dark, iridescent, sand/brush, and the newest addition, pearl effect. We have more than 100 colors available.



FOIL

There are 2 types of foil: regular and stretchable. Regular has a mirror finish using a thicker material, while stretchable has a metallic finish in a thin, soft material. We have different patterns available like hologram, iridescent, brush, and transparent.



GLITTER

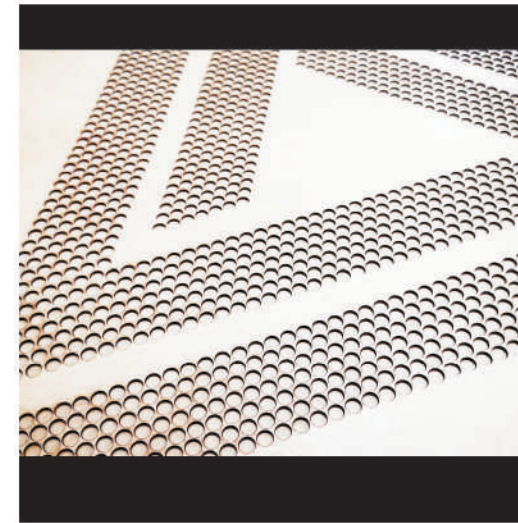
Glitter is another classic vinyl heat transfer. One of our most popular materials, it is often used in a glitter and rhinestone combination. We also have patterned glitter such as rainbow, camouflage, and animal print.



FLOCK

Soft fuzzy fabric with a 3D appearance. There are 3 types of flock: regular, medium, and long hair. The difference is the height and texture of the fuzziness.

Special Process

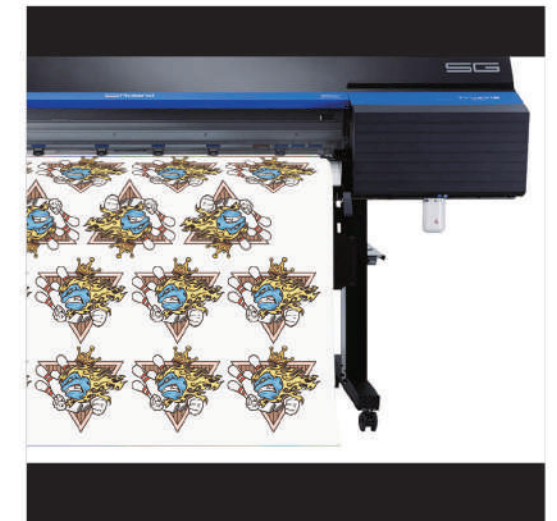


TEMPLATE MAKING

Templates are made for designs using rhinestones and studs. For every different size and color, a separate template must be made.

PRINTING TRANSFER SERIES

We can print designs and images on PU, foil, flock, fabric, and glitter. Recommended for very detailed designs with small lines or lettering. We can also add a 3D embossed effect on top. For more details, please see page 39-44.



SILICONE LABEL

Commonly used for brand labels, we have: flat, bump, hollow, toothbrush, and silicone film. These are waterproof and durable, so they are great for outdoor apparel, backpacks, and bags. For more information, please see page 49-50.

Classic Lead Free Rhinestone

- Our most popular and economical choice!
- Korean quality rhinestones made in China.
- Low lead content as required by U.S. CPSIA standards.
- Passes the standard Oeko-Tex test.

SIZE:MM							
SS4 1.5-1.6	SS6 1.9-2.0	SS8 2.3-2.4	SS10 2.7-2.8	SS12 3.0-3.2	SS16 3.8-4.0	SS20 4.6-4.8	SS30 6.4-6.6
CRYSTAL DLR001	AQUAMARINE DLR202	LT. SAPPHIRE DLR211	SAPPHIRE DLR206	COBALT DLR369	SKY. BLUE DLR210		
MONTANA DLR207	TEAL BLUE DLR236	JONQUIL DLR213	LT. TOPAZ DLR226	TOPAZ DLR203	LT. SMOKY TOPAZ DLR272		
SMOKY TOPAZ DLR220	PERIDOT DLR214	EMERALD DLR205	OLIVINE DLR228	LT. PEACH DLR362	ORANGE DLR248		
CITRINE DLR249	LT. ROSE DLR223	ROSE DLR209	LT. AMETHYST DLR212	AMETHYST DLR204	TANZANITE DLR539		
DK.SIAM DLR227	SIAM DLR208	BLACK DIAMOND DLR215	JET DLR280	JET HEMATITE DLR280HEM	AB CRYSTAL DLR001AB		
CHALKWHITE DLR279	OPAL DLR234						

⚠ Please note SS8 and SS12 only have CRYSTAL and CRYSTAL AB two colors.

INSTRUCTIONS

- 160°C-180°C or 320°F-355°F
- Medium Pressure
- 10S-15S
- Peel warm
- Wash inside out, wash warm, cool dry

IDEAL FOR FABRICS

Cotton, Polyester, Cotton/Poly Blends.

Low Lead MC Rhinestone

- Premium rhinestones that are brighter with more facets.
- Low lead content as required by U.S. CPSIA standards.
- Glue backing imported from Europe.

SIZE:MM							
Ss4 1.6-1.7	Ss6 2.0-2.1	Ss8 2.4-2.5	Ss10 2.8-2.9	Ss12 3.1-3.3	Ss16 3.8-4.1	Ss20 4.7-4.9	Ss30 6.5-6.7
CRYSTAL LDM001	AQUAMARINE LDM202	LT. SAPPHIRE LDM211	BLUE ZIRCON LDM229	MONTANA LDM207	COBALT LDM369		
JONQUIL LDM213	LT. PEACH LDM232	LT. CO. TOPAZ LDM246	CITRINE LDM249	TOPAZ LDM203	HYACINTH LDM236		
PERIDOT LDM214	OLIVINE LDM228	EMERALD LDM205	LT. ROSE LDM223	ROSE LDM209	FUCHSIA LDM502		
SIAM LDM208	TANZANITE LDM539	LT. AMETHYST LDM212	AMETHYST LDM204	BLACK DIAMOND LDM215	SMOKY TOPAZ LDM220		
JET LDM280	AB CRYSTAL LDM001AB	AB BLUE LDM369AB	AB JET LDM280AB	METALLIC BLUE LDM001METBL	AB EMERALD LDM205AB		
AB SIAM LDM208AB	AB TOPAZ LDM203AB	CRYSTAL DORADO LDM001DOR	JET HEMATITE LDM280HEM				

⚠ Please note SS4,SS8 and SS12 only have CRYSTAL and CRYSTAL AB two colors.

INSTRUCTIONS

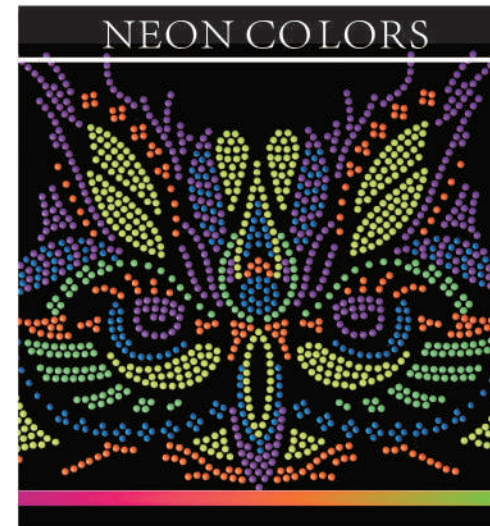
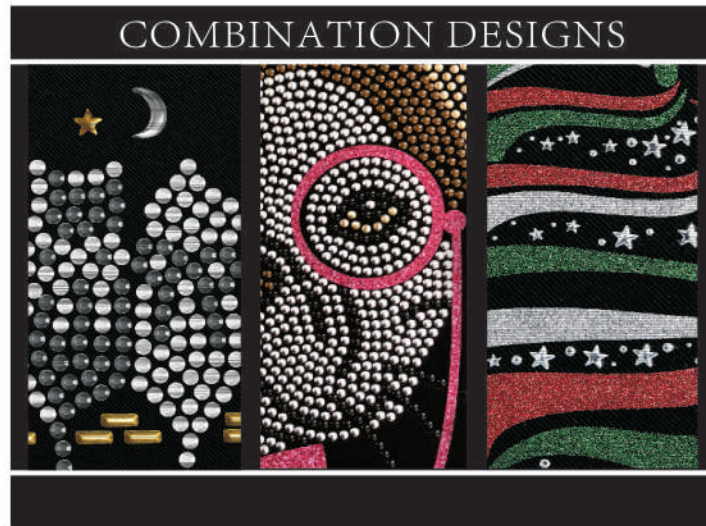
- 160°C-180°C or 320°F-355°F
- Medium Pressure
- 10S-15S
- Peel warm
- Wash inside out, wash warm, cool dry

IDEAL FOR FABRICS

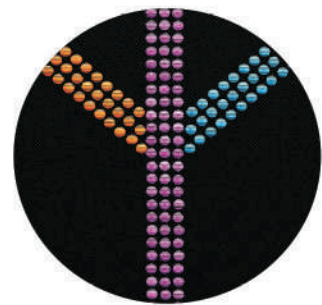
Cotton, Polyester, Cotton/Poly Blends.

Aluminum Studs Series

We offer 3 kinds of aluminum studs: rhinestuds, domestuds, and nailheads. Each type is available in a variety of colors and sizes, including neon colors! Nailheads also have a wide selection of shapes like stars, hearts, diamonds, and more.

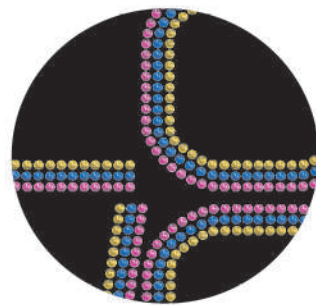


RHINESTUD



Rhinestuds are faceted like rhinestones and have a metallic shine.

DOMESTUD



Like rhinestuds but without the facets, these are rounded with a smooth surface.

NAILHEAD



Flat instead of domed, these are available in 200 colors, including special colors like neon and matte. These also come in different shapes like crescent, stars, hearts, etc.

Hot Fix Rhinestud

- Made with aluminum and faceted like rhinestones but with a metallic shine.
- Lightweight and more economical compared to rhinestones.
- Made in Korea and contains no lead content as required by U.S. CPSIA standards.

										SIZE:MM	
1.5MM	2MM	3MM	4MM	5MM	6MM						
ARD001 SILVER	ARD002 GOLD	ARD004 LT.PINK	ARD005 RED	ARD007 GREEN	ARD008 PERIDOT	ARD009 LT.PURPLE	ARD010 PURPLE	ARD011 SKY BLUE	ARD012 BLUE		
ARD014 DK.BLUE	ARD015 DK.SKY.BLUE	ARD016 YELLOW	ARD017 ORANGE	ARD019 PINK	ARD020 ROSE PINK	ARD021 BLACK	ARD022 BROWN	ARD023 GRAY	ARD024 COPPER		
ARD031 MATT SILVER	ARD032 MATT GOLD	ARD033 BRONZE	ARD034 WHITE	ARD025 NEON	ARD026 NEON	ARD027 NEON	ARD028 NEON	ARD029 NEON	ARD030 NEON		

Hot Fix Domestud

- Made with aluminum for a metallic shine. Rounded rather than faceted to create a dome-like appearance.
- Choose from a variety of colors and sizes, including neon!
- Made in Korea and is lead-free as required by U.S. CPSIA standards

											SIZE:MM
1.5MM	2MM	3MM	4MM	5MM	6MM						
ADS001 SILVER	ADS002 LT.GOLD	ADS003 GOLD	ADS004 BLACK	ADS005 ORANGE	ADS006 PERIDOT	ADS007 GREEN	ADS008 PINK	ADS009 LT.PINK	ADS010 DK.PINK	ADS011 SKY BLUE	
ADS012 BLUE	ADS013 TURQUOISE	ADS014 LT.BROWN	ADS015 BROWN	ADS016 GRAY	ADS017 DK.GRAY	ADS018 RED	ADS019 PURPLE	ADS020 COPPER	ADS021 YELLOW	ADS022 LT.PURPLE	
ADS029 MATT SILVER	ADS030 MATT GOLD	ADS031 BRONZE	ADS032 WHITE	ADS033 PEARL	ADS023 NEON	ADS024 NEON	ADS025 NEON	ADS026 NEON	ADS027 NEON	ADS028 NEON	

INSTRUCTIONS

- 160-180°C or 320-355°F
- Medium Pressure
- 10-15S

Peel warm

Wash inside out, wash warm, cool dry

IDEAL FOR FABRICS

Cotton, Polyester, Cotton/Poly Blends

Hot Fix Nailhead

- Korean-made lead-free aluminum nailheads that comes in a wide range of colors and shapes.
- Similar to domestuds, these also have a round surface but are flat in comparison.
- Production time: 10-15 days.

1.5mm	2mm	2.5mm	3mm	3.5mm	4mm	5mm	6mm	7mm	8mm		
9mm	10mm	11mm	12mm	13mm	15mm	16mm	20mm	21mm	3X3mm		
4X4mm	5X5mm	6X6mm	8X8mm	10X10mm	13X13mm	20X20mm	2.5X2.5mm	3X3mm	3.5X3.5mm	4X4mm	
12X12mm	10X10mm	9X9mm	5X5mm	3X3mm	5X5mm	7X7mm	10X10mm	10X12mm	4X4mm	6X6mm	6X7mm
8X8mm	10X10mmA	10X10mmB	1.5X5mm	2X4mm	2.5X5mm	2.5X7mm	3X10mm	5X10mm	3X6mm	4X8mm	5X10mm
3X6mm	5X8mm	6X10mm	8X13mm	8X8mm	3X10mm	3X6mmA	3X6mmB	4X8mm	5X10mm	6X12mm	5X10mmA
5X10mmB	10X10mm	6X10mm	5X9mm	9X13mm	6X3mm	8X5mm	10X7mm	13X13mmA	13X13mmB	10X10mmA	10X10mmB
8X8mm	7X7mm	6X6mm	4X4mm	3X3mm	3X3mm	4X4mm	6X6mm	8X8mm	4X2mm	5X3mm	6X3mm
6X4mm	8X3mm	8X4mm	10X3mm	10X4mm	11X5.5mm	16X8mm	10X11mm	10X4mm	8X2.5mm	10X13mm	10X13mm
5X5mmA	5X5mmB	7X7mmA	7X7mmB	7X7mmC	10X10mmA	10X10mmB	10X10mmC	13X13mmA	13X13mmB	15X15mmA	15X15mmB
		1	2	3	4	5	6	7	8	9	

Hot Fix Nailhead Colours

001	002	003	004	005	006	007	008	009	010	011	012
013	014	015	016	017	018	019	020	021	022	023	024
025	026	027	028	029	030	031	032	033	034	035	036
037	038	039	040	041	042	043	044	045	046	047	048
049	050	051	052	053	054	055	056	057	058	059	060
061	062	063	064	065	066	067	068	069	070	071	072
073	074	075	076	077	078	079	080	081	082	083	084
157	158	159	160	161	162	163	164	165	166	167	168
169	170	171	172	173	174	175	176	177	178	179	180
181	182	183	184	185	186	187	188	189	190	191	192
201	200										

INSTRUCTIONS

- 160-180°C or 320-355°F
- Medium Pressure
- 10-15S
- Peel warm
- Wash inside out, wash warm, cool dry
- More colors available, welcome to contact us for special orders.

IDEAL FOR FABRICS

Cotton, Polyester, Cotton/Poly Blends

Sequin Series

HOT FIX SEQUIN

Has a lighter feel than thread sewn sequins, and tends to positioned tighter on fabric. They are machine washable and dryer friendly, and they will not lose their luster. Hot fix Sequins have a heat activated glue on the back and are applied as a transfer with a heat press.

MOQ:24 pieces



PRE STRUNG SEQUIN

Sequins add instant drama to almost anything, and pre-strung sequins are a great time saver.

MOQ: 200 pieces

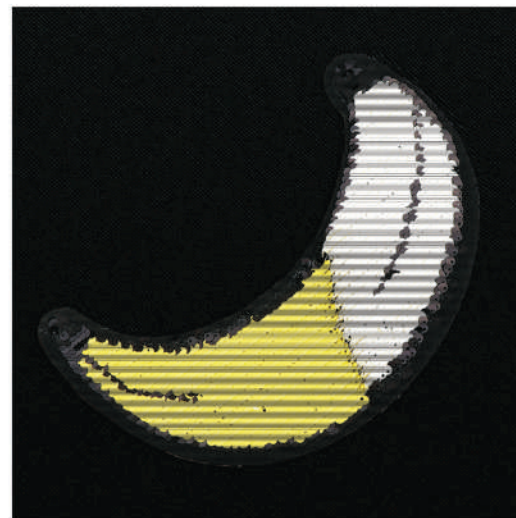
(complex patterns needed to be requested separately)



REVERSIBLE FLIP SEQUIN

In a reversible, overlapping arrangement, you can randomly stir the sequins according to the likes and dislikes to form different patterns by the sequin groups, so that clothes are bright, changeful, fashionable and attractive.

MOQ: 200 pieces and up.



Hot Fix Sequin

- Flat round PET material, made in Korea.
- Smooth to the touch, these are applied as easily as rhinestones.
- We offer a large variety of these foil-like colors.

SIZE:MM		
3MM	4MM	5MM

SILVER SPK-1	D/GOLD SPK-2	GREEN SPK-3	VIOLET SPK-4	RED SPK-5	PINK SPK-7
D/BLUE SPK-8	L/GOLD SPK-9	CHERRY PINK SPK-10	BLACK SPK-12	WHITE SPK-16	BROWN SPK-18
GRAY SPK-25	L/PINK SPK-27	SAPPHIRE BLUE SPK-33	H.L.T.PINK SPHR-30	H. SILVER SPHR-31	H. D/GOLD SPHR-32
H. GREEN SPHR-33	H. VIOLET SPHR-34	H. RED SPHR-35	H. BLUE SPHR-36	H. PINK SPHR-37	H. D/BLUE SPHR-38

INSTRUCTIONS

155-175°C or 310-350°F

Medium

10-15S

Peel warm

Wash inside out, wash warm, cool dry

IDEAL FOR FABRICS

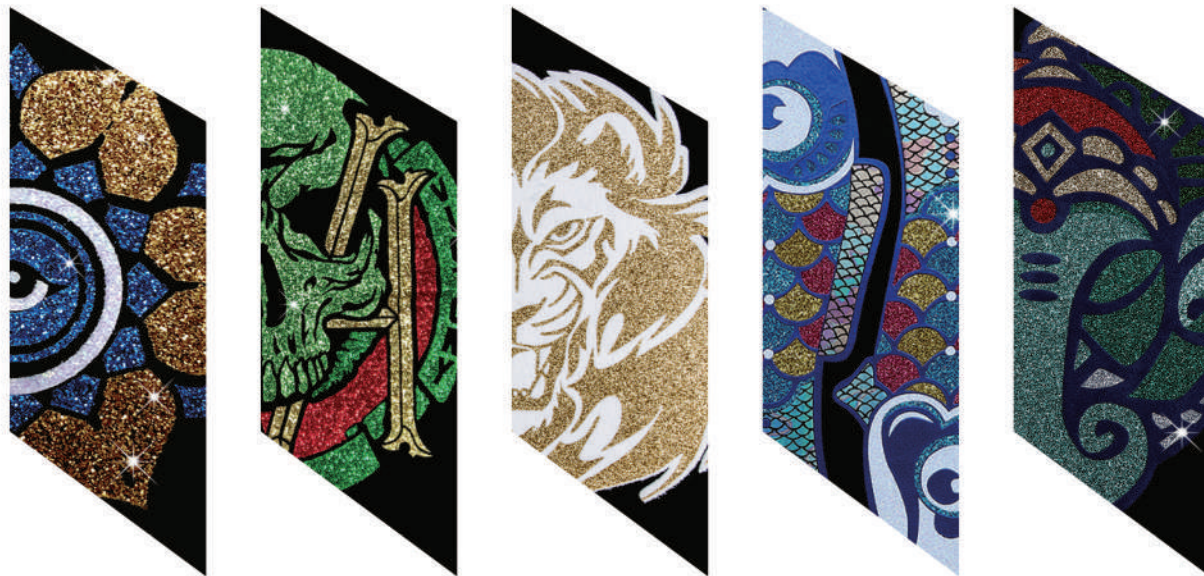
Cotton, Polyester, Cotton/Poly Blends

Hot Fix Glitter

For when you want your design to sparkle like your imagination! Shiny glitter products plus a crazy amount of colors equals endless possibilities! Browse our glitter products to find whafs right for your project!

APPLICATIONS

Garments, T-shirts, shoes and caps, bags, children's clothes, underwears, and other various textile products.

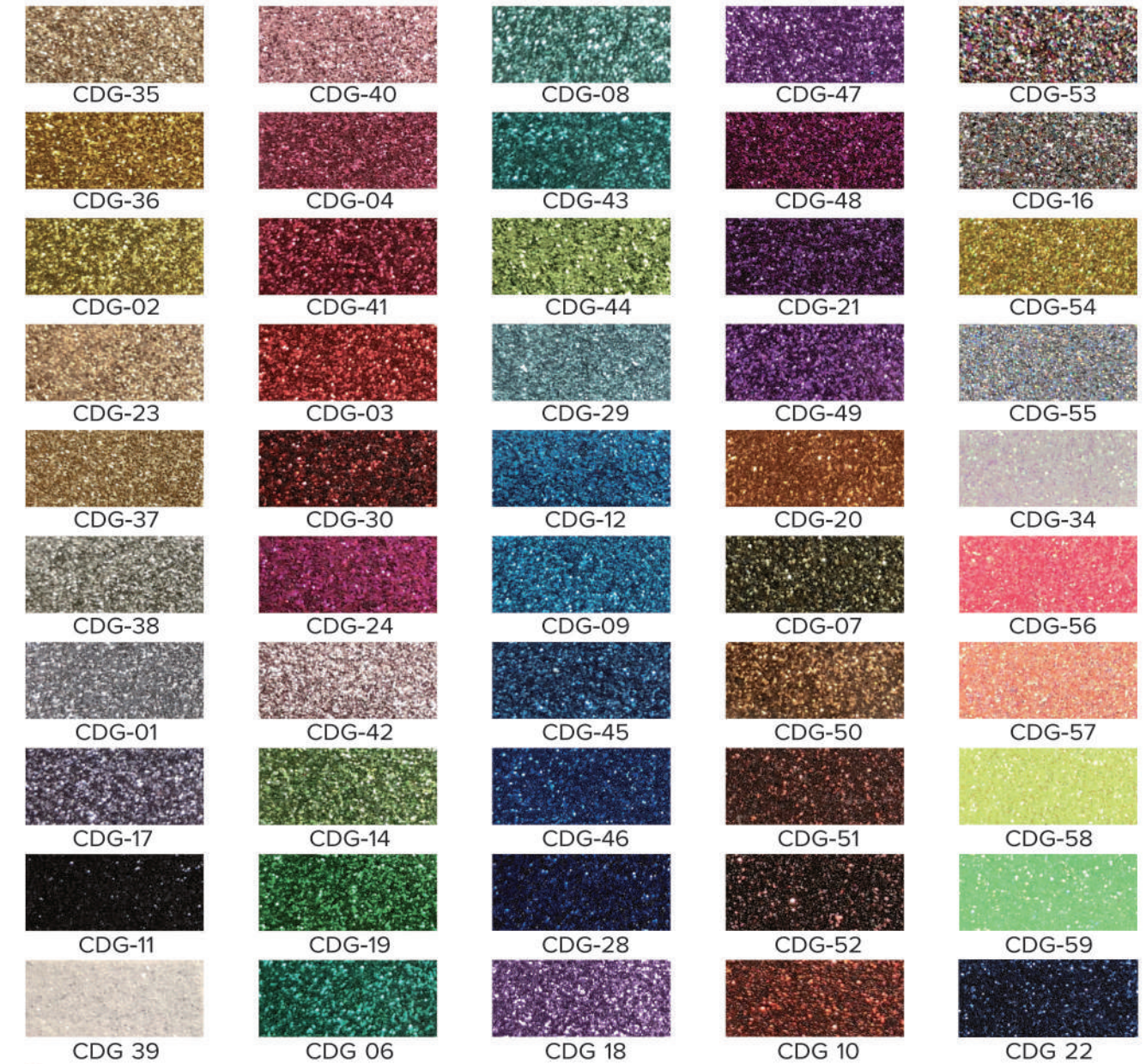


COMBINATION DESIGNS



Hot Fix Glitter

- Our most popular heat transfer material.
- Sparkly and colorful with a matte texture.
- Using a rhinestone and glitter combination makes your design unique.
- A square centimetre of light has a refractive index of 1:128, but is only 0.16mm thickness (Shiny and soft).



⚠ Not recommend as a bottom layer material.

INSTRUCTIONS

- 🔥 160°C-180°C or 320°F-355°F
- 👤 Medium Pressure
- 🕒 10S-15S

- 🧼 Peel warm
- 🧺 Wash inside out, wash warm, cool dry

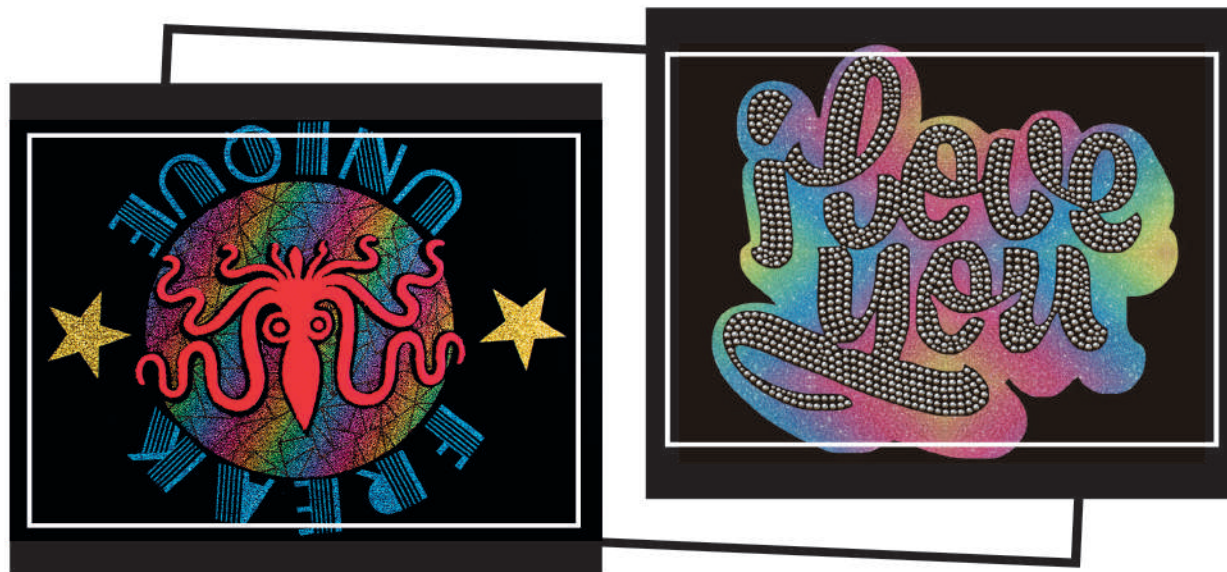
IDEAL FOR FABRICS

Cotton, Polyester, Cotton/Poly Blends.

Hot Fix TPU Glitter

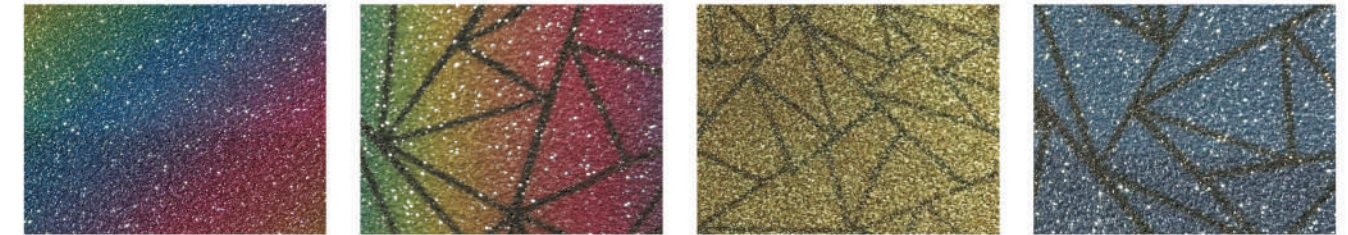
We can provide you with a combination designs of TPU GLITTER and other materials such as PU, RHINESTONE, FOIL, SEQUIN. The product only requires one-time press, which saves time and effort. Be flexible and combine with a variety of materials to enrich your design!

COMBINATION DESIGNS



Hot Fix TPU Glitter

- Thermoplastic polyurethanes component makes it great color fastness.
- Creates stunning results with 12 colors to choose from.
- Glitter appearance plus rich patterns create fun and pop to your designs.
- Lead time: 7-10 business days.
- More patterns available, please provide HD image if you need to customize.
- Thickness of material: 0.21MM.



TPU-01

TPU-02

TPU-03

TPU-04



TPU-05

TPU-06

TPU-07

TPU-08



TPU-09

TPU-10

TPU-11

TPU-12

160°C-180°C or 320°F-355°F

7S-15S

Peel warm

THERMOCHROMIC MATERIALS

Normally, a temperature difference of 20 C can cause color change.

THERMOCHROMIC MATERIALS

- Once the temperature raised, the material color turns to bright.
- The material's thickness is 1mm but it is soft.



WT-01 Blue

WT-02 Green

WT-03 Pink

WT-04 Orange

140°C-170°C or 285°F-340°F

10S-15S

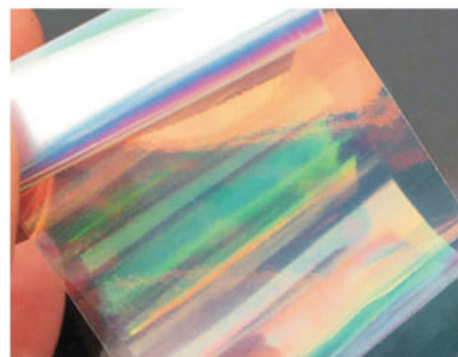
Peel warm

Hot Fix Foil

Foil-Like material with a smooth shiny surface which can be cut into shapes by yourself.
Available in 14 different solid colors and hologram patterns.
Iridescent colors are available, which can make the design more distinctive.
Different patterns can be printed by our special printing machine.

IRIDESCENT FOIL

- Iridescent foil is the new one we developed in 2019.
- The colors appear to be different in light-pink, blue and yellow when over white or light backgrounds, and beautiful blue and green over a black or dark background.



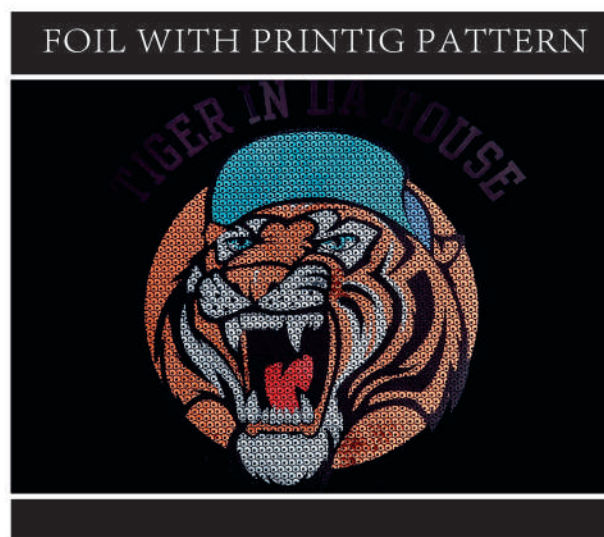
PRINTING FOIL

- Mirror finish, thick, heavy duty and hard surface.
- Available in solid colors and hologram patterns.
- There are 4 stock patterns available that can be printed by our special printing machine.
- The patterns can be customized according to

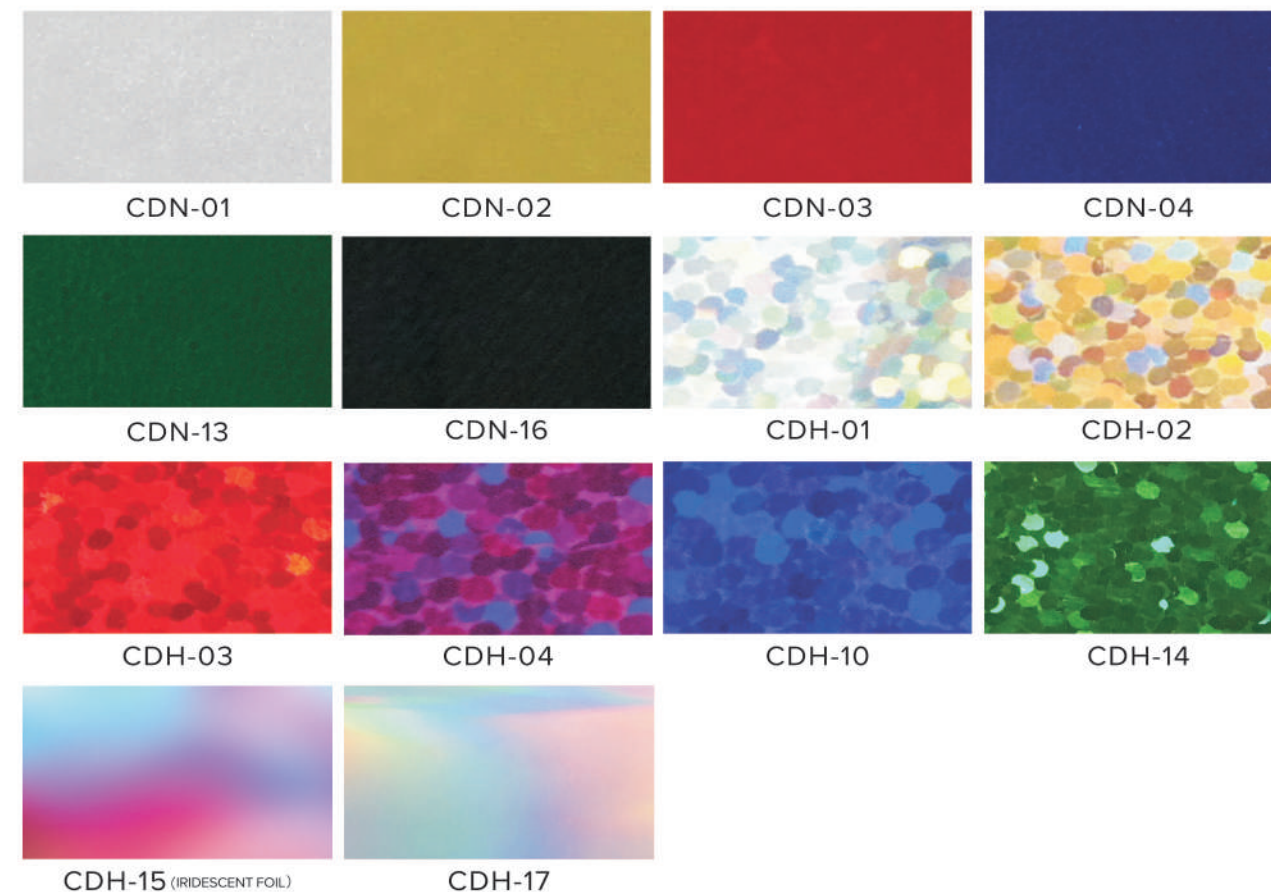


COMBINATION DESIGNS

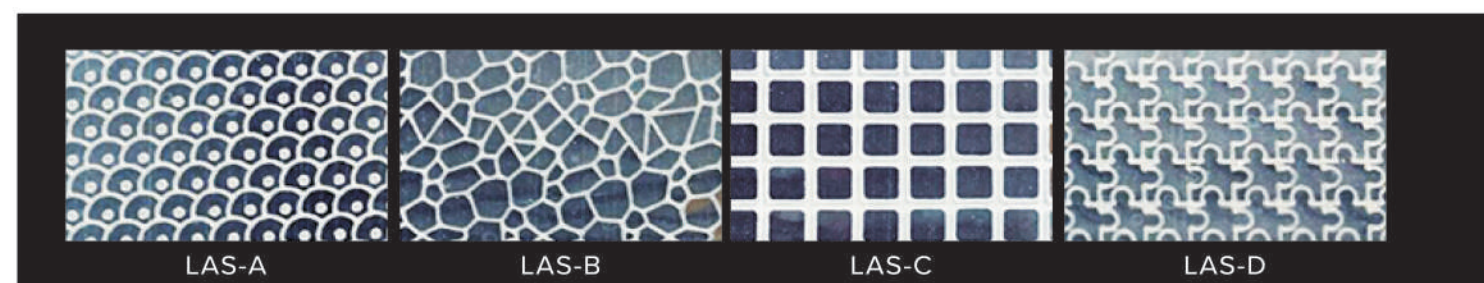
Can combined with other materials perfectly, such as rhinestones, glitter, fabric, and etc.



Hot Fix Foil



PRINTING FOIL PATTERN



INSTRUCTIONS

- 🔥 130°C-160°C or 265°F-320°F
- 👤 Medium Pressure
- 🕒 10S-15S
- 👉 Peel warm
- 🧺 Wash inside out, wash warm, cool dry

⚠️ Not recommend as a bottom layer material.

IDEAL FOR FABRICS

Cotton, Polyester, Cotton/Poly Blends.



- ⚠️ Not recommend for design with bold and large pieces of material details
- ⚠️ We do not provide the material for you to print, this needs special machine and ink.

Stretchable Foil

The thinnest material among all the heat transfer vinyl we own.
 Chrome-like surface as regular foil but it's thinner and does not crease easily.
 Smooth soft touch with strong stretchability.
 Add value to your fashion designs with the brilliant accent of reflective metals.
 Iridescent and Translucence foil patterns are available. Thickness of material: 0.21MM.
 Iridescent and Translucence foil patterns are available.

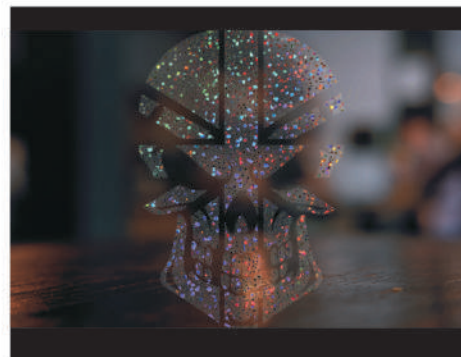
REGULAR STRETCHABLE FOIL

A material with metal appeal, strong stretchability and a smooth soft touch. Can be combined with other materials perfectly, such as rhinestone, stud, and etc.



TRANSLUCENCE STRETCHABLE FOIL

There are three different patterns of translucence foil available. After pressing, the color of fabric will maintain visible under the graphic patterns. Overlap on the printable diagram adds 3D effect to the design.

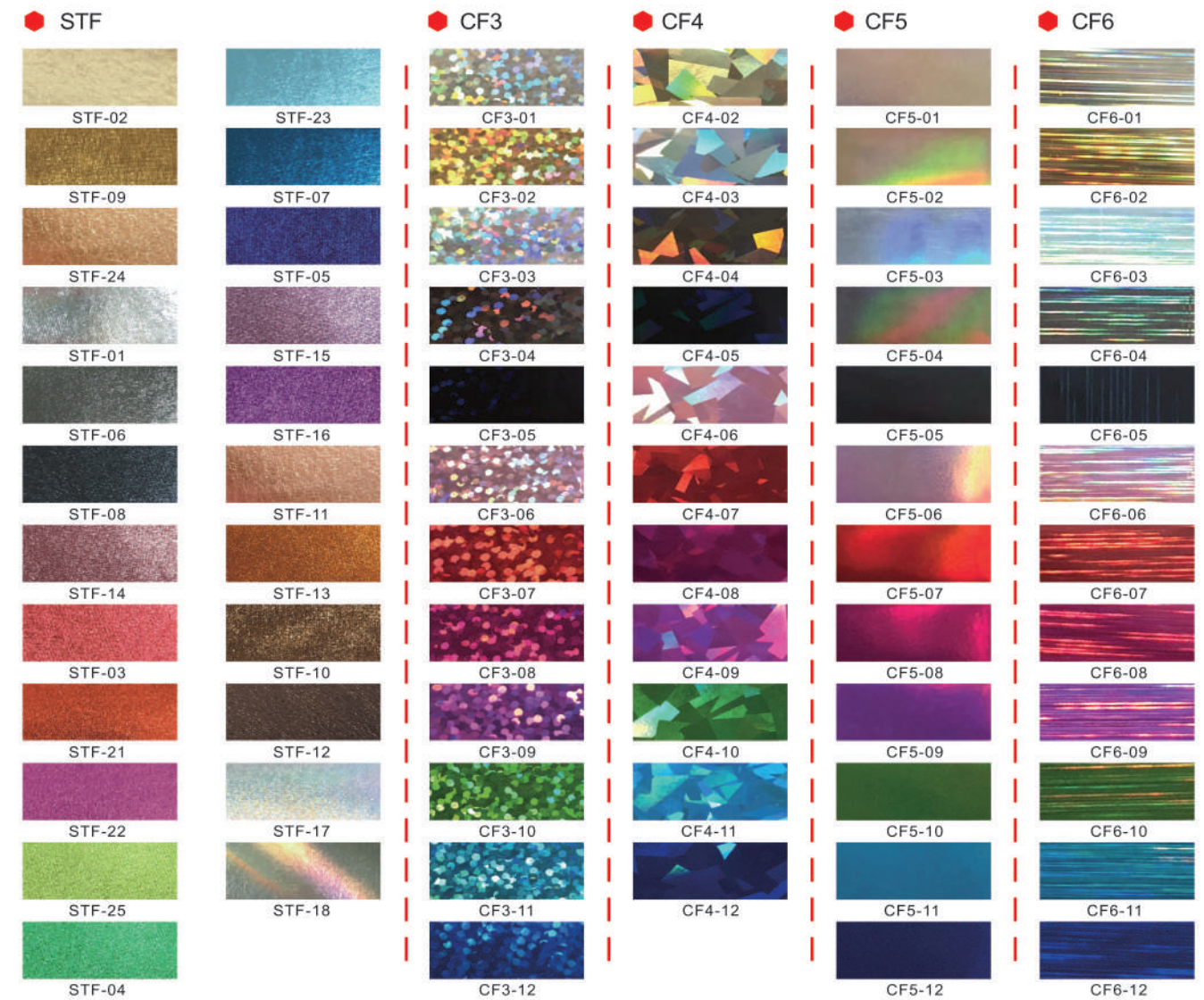


COMBINATION DESIGNS

Translucence stretch foil can be overlapped on the printing diagrams to make the design have a 3D effect. Most of our clients like to use regular stretchable foil to do the transfers alone, someone like to do combination with PU, enrich the whole design.

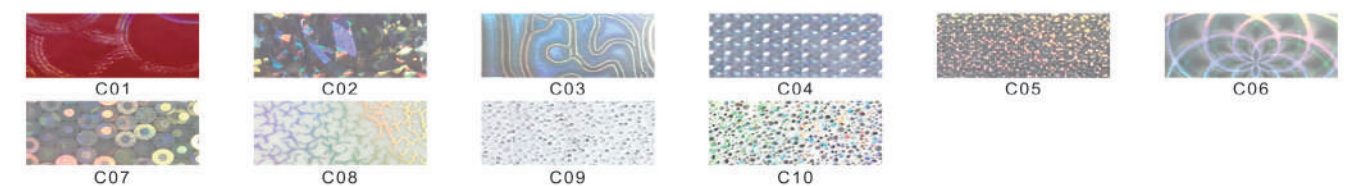


Stretchable Foil



NOTE: Stretchable foil can be pressed more than once. If needed, after the first press, please remove the protective film and put a kraft paper on top, use temperature 265°F to press a second time. Please note STF-17, STF-18 should be in temperature 265°F.

other optional foil with textures



⚠ Not recommend as a bottom layer material.

INSTRUCTIONS

- 🔥 130°C-160°C or 265°F-320°F
- 👤 Medium Pressure
- 🕒 7S-15S

IDEAL FOR FABRICS

Cotton, Polyester, Cotton/Poly Blends.

- 👉 Peel cold
- 👉 Wash inside out, wash warm, cool dry

Hot Fix PU

There are 7 types of PU vinyl for choices: Matte, Neon, Pearl-lustre, Glow in the dark, Reflective, Brush and Sand PU.

Soft and eco-friendly polyurethane made in Korea; Durable, thin and stretchy material in various colors.

Can be cut into 1mm thin lines that apply to all types of designs, especially great for team names or numbers.

We own the patent for the Brush PU and Sand PU.

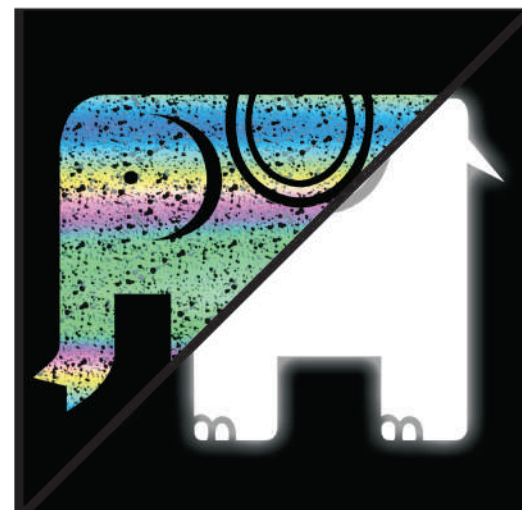
REGULAR PU

- Matte, neon and pearl-lustre colors are available.
- Matte PU is the one most common used among our clients.
- Pearl-lustre PU is the new one we developed in 2019, which with bright pearl gloss effect.
- Neon PU is more attractive with shining colors.



GLOW IN THE DARK & REFLECTIVE PU

- Luminous: Currently we have 2 different luminous PU- Normal one & IRIDESCENT effect. They are look glossy in daylight, the iridescent luminous will show iridescent effect specially, and shiny in the dark.
- Reflective: Appear black in daylight; While at night when illuminated by light, which is absolutely stunning and eye-catching, perfect for enhanced night time visibility and safety.



Hot Fix PU



BRUSH & SAND PU

- We own the patent of these 2 types PU.
- Both surface with sparkle shiny effect which similar to glitter, brighter than regular PU vinyl. Special brush and sand effect will give your design more texture.

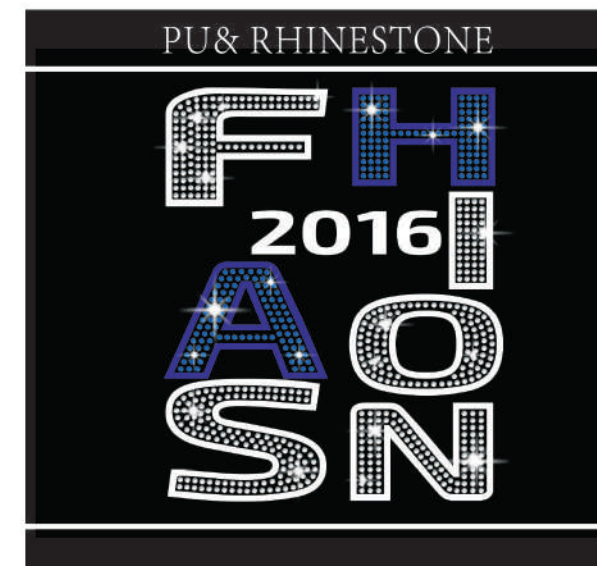
IRIDESCENT LUMINOUS PU

- Four new popular iridescent colors in day night and glow in dark with different color ways.
- Get more detail please refer to page 34.



COMBINATION DESIGNS

PU is great for doing team names or numbers; Also it's used to be combined with other materials widely among our clients, such as rhinestone, stretchable foil and etc.



Hot Fix PU

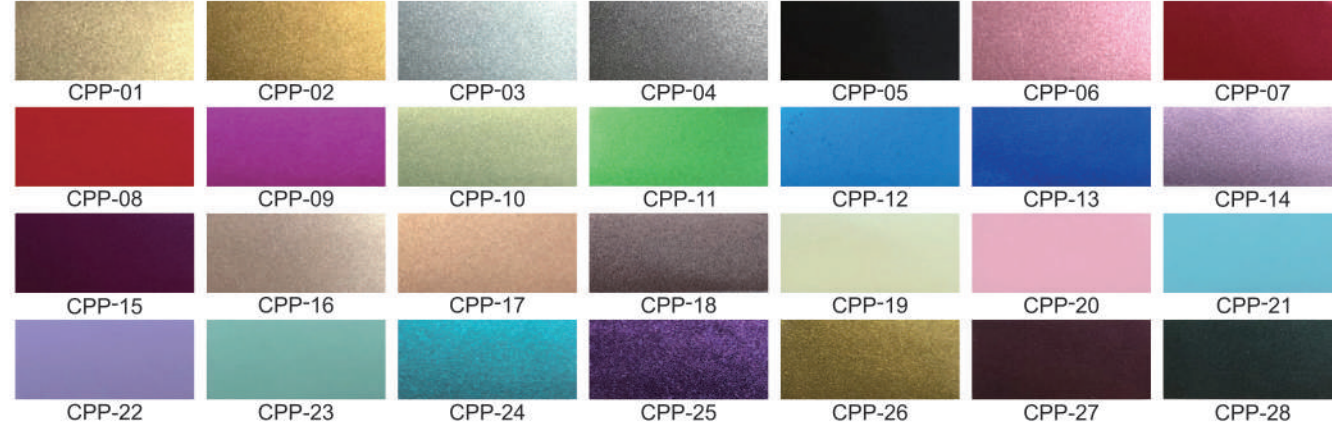
REGULAR



NEON



PEARL



INSTRUCTIONS

- 130°C-160°C or 265°F-320°F
- Medium Pressure
- 7S-15S

- Peel warm
- Wash inside out, wash warm, cool dry

IDEAL FOR FABRICS

Cotton, Polyester, Cotton/Poly Blends.

Hot Fix PU

GLOW IN THE DARK

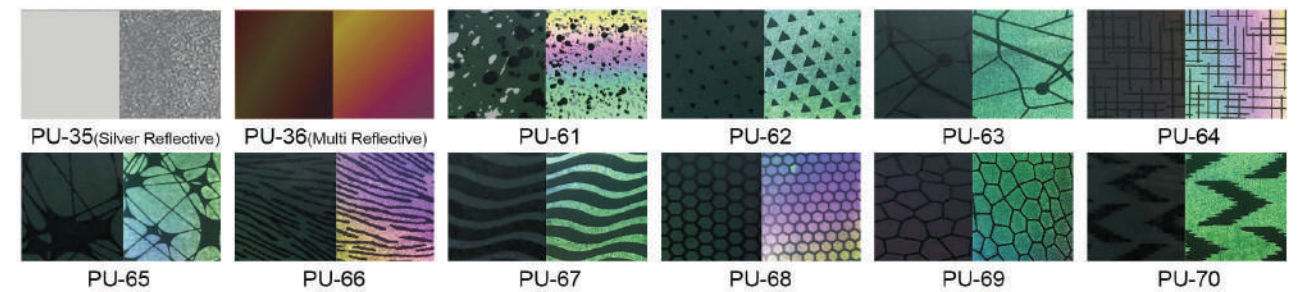
Normal → Lumious



IRIDESCENT LUMINOUS PU



REFLECTIVE PU



SAND PU



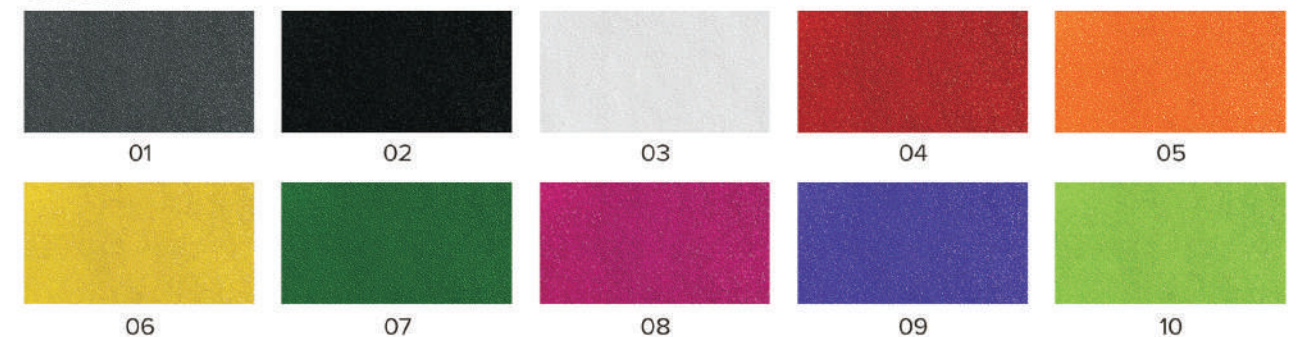
HM

BRUSH PU



HL

COLOR



Please provide us the color with type and color number, for example, if you want to use SAND PU black color, you can send us just like this or send me "HM-02".

INSTRUCTIONS

- 130°C-160°C or 265°F-320°F
- Medium Pressure
- 7S-15S

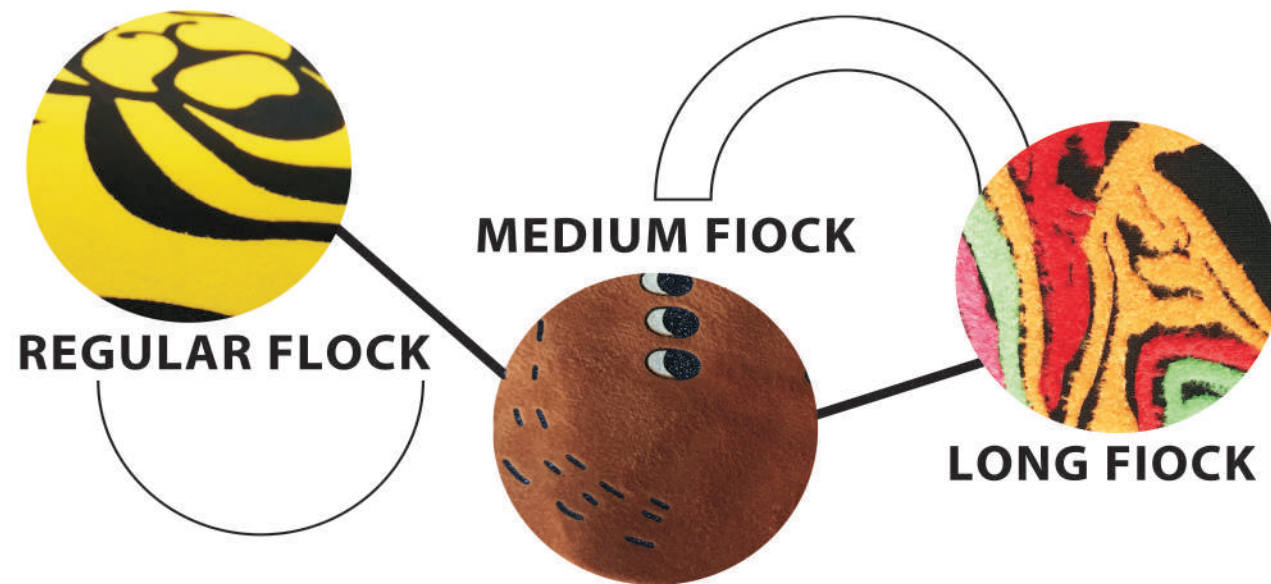
- Peel warm
- Wash inside out, wash warm, cool dry

IDEAL FOR FABRICS

Cotton, Polyester, Cotton/Poly Blends.

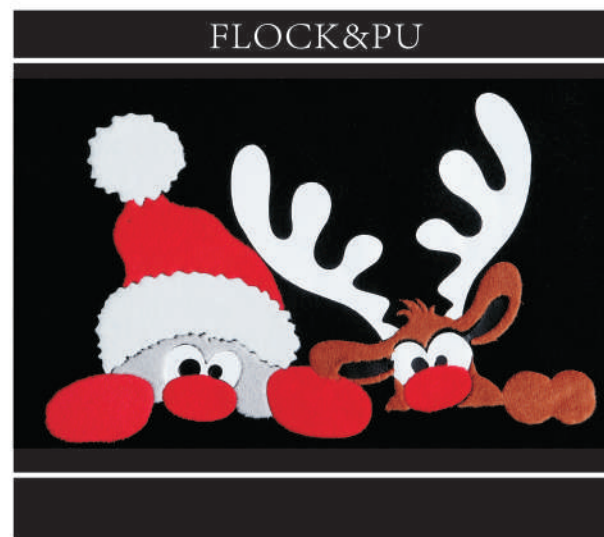
Hot Fix Flock

Low cost decoration as an alternative to embroidery.
3 thickness options available.



COMBINATION DESIGNS

Flock can be used as a bottom layer material for designs. The layering method adds a 3D effect for appearance and feel. It can also be combined with other materials like rhinestones and glitter. Despite being layered, the finished transfer will be on a single sheet for an easy one press application.



Hot Fix Flock

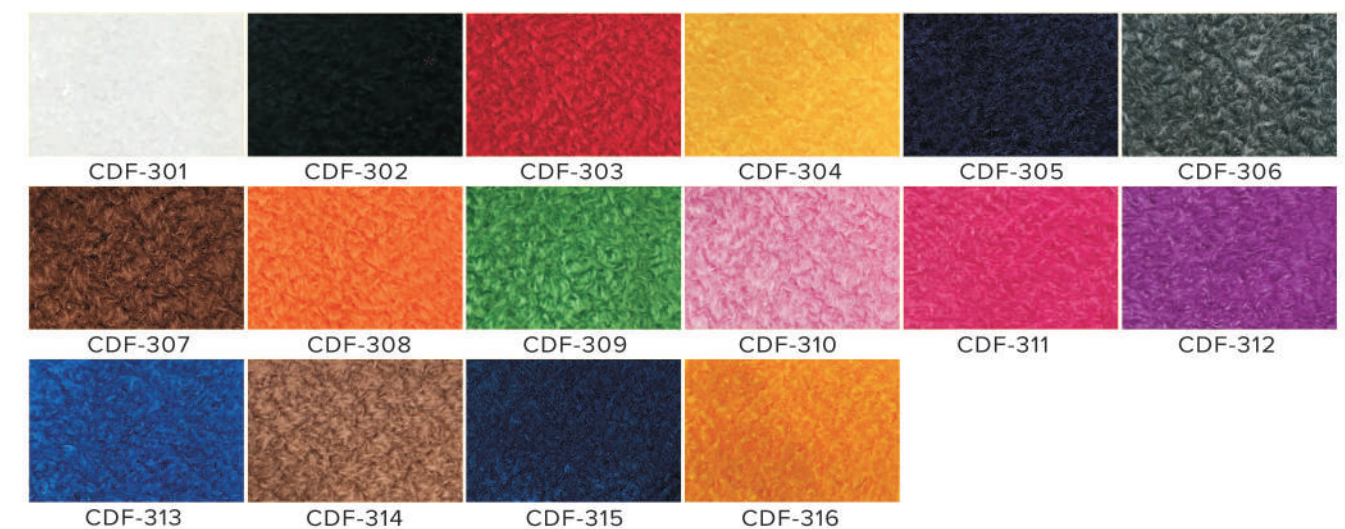
REGULAR FLOCK *Regular Flock#CDF-001 to #CDF-009 is 0.5mm;



MEDIUM FLOCK(VELVET) *Medium Flock#CDF-201 to #CDF-213 is 1.5mm;



LONG FLOCK(VELVET) Long Flock#CDF-301 to #CDF-316 is 2mm;



INSTRUCTIONS

- 165°C-170°C or 330°F-340°F
- Medium Pressure
- 10S-15S

- Peel warm
- Wash inside out, wash warm, cool dry

IDEAL FOR FABRICS

Cotton, Polyester, Cotton/Poly Blends.

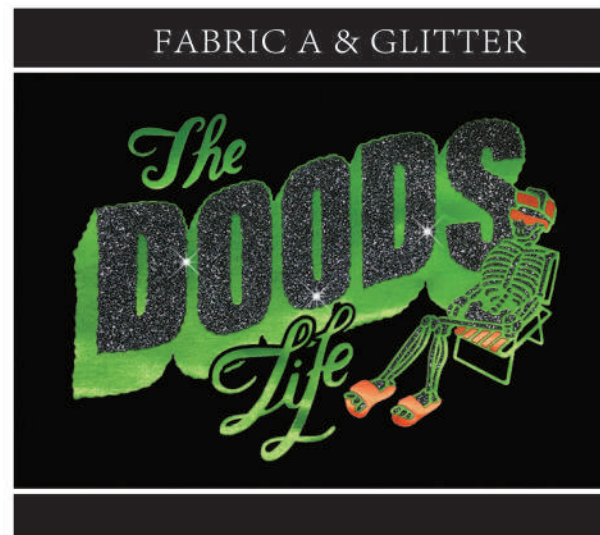
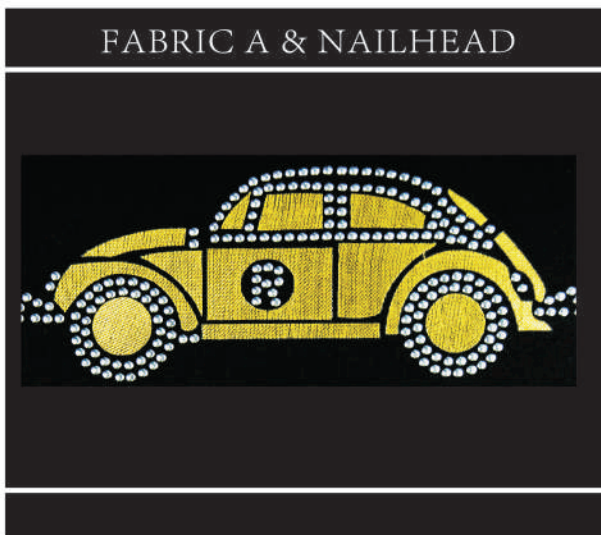
Hot Fix Fabric A

Fabric A comes in two styles: satin and cotton. Satin has a selection of solid colors that have a sheen or can be printed custom pattern/design (separate minimum quantity required). The cotton series is pre-selected patterns like floral and camoufla-ge.



COMBINATION DESIGNS

Fabric A can be combined with other materials, including being used as a layering base.

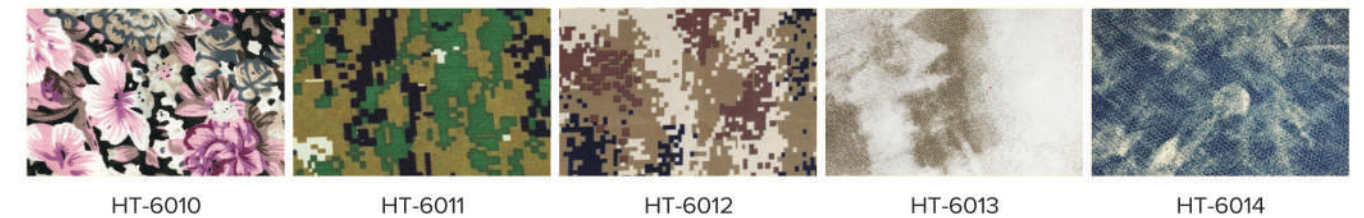


Hot Fix Fabric A

SATIN



COTTON



INSTRUCTIONS

- 150°C-165°C or 300°F-330°F
- Medium Pressure
- 10S-15S
- Peel warm
- Wash inside out, wash warm, cool dry

IDEAL FOR FABRICS

Cotton, Polyester, Cotton/Poly Blends.

Hot Fix Fabric B & Lace

FABRIC B

- Soft polyester material with a selection of solid colors.
- Use by itself, in a combination, or as a bottom layering material for a 3D appearance.
- Great for numbering and/or lettering designs.

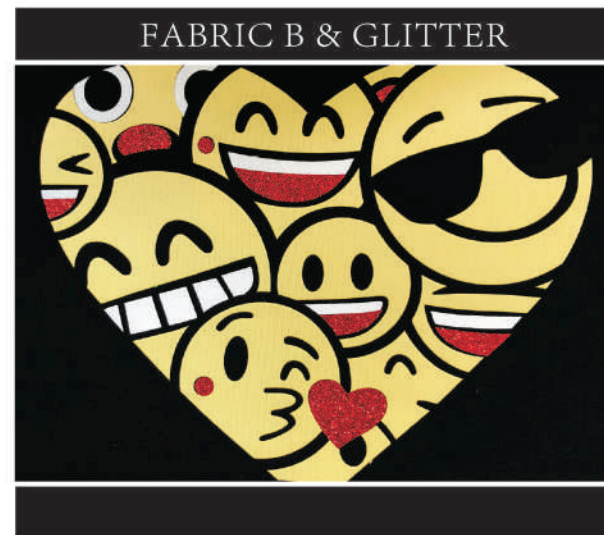


LACE

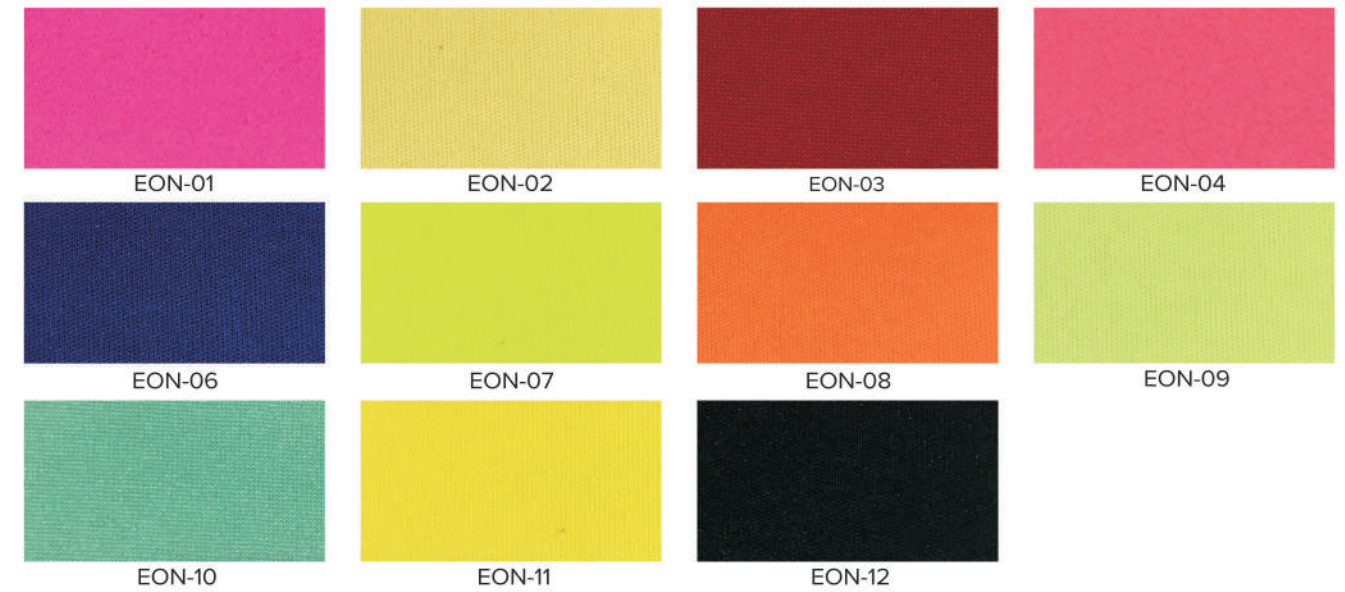
- A thin, delicate lace fabric in a floral pattern that can add elegance to any design.
- Combine with other materials, like rhinestones, or use as a layering material.

COMBINATION DESIGNS

Both Fabric B and Lace can be combined with most of our hot fix materials.



Hot Fix Fabric B



Hot Fix Lace



COLOR



INSTRUCTIONS

- 🔥 160°C-180°C or 320°F-355°F
- 👉 Medium Pressure (4-6kg)
- 🕒 10S-15S

- 🧼 Peel warm
- 🧺 Wash inside out, wash warm, cool dry

IDEAL FOR FABRICS

Cotton, Polyester, Cotton/Poly Blends.

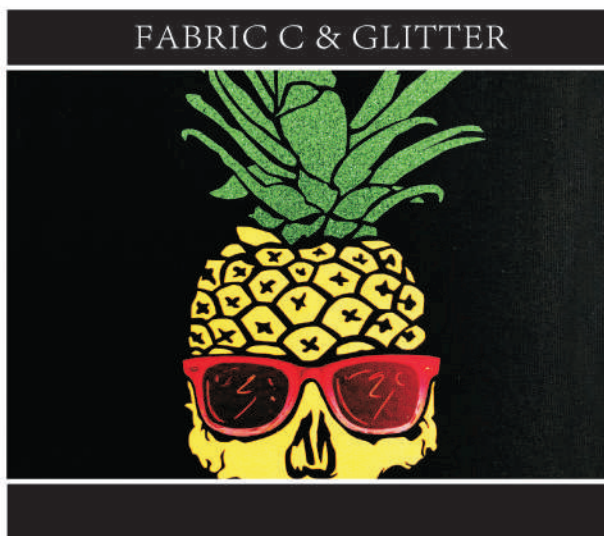
Hot Fix Fabric C

Select from deerskin or imitated leather fabrics. Deerskin is a suede texture and imitated leather has the appearance and feel of leather.
Great for creating a textured appearance with a 3D feel.



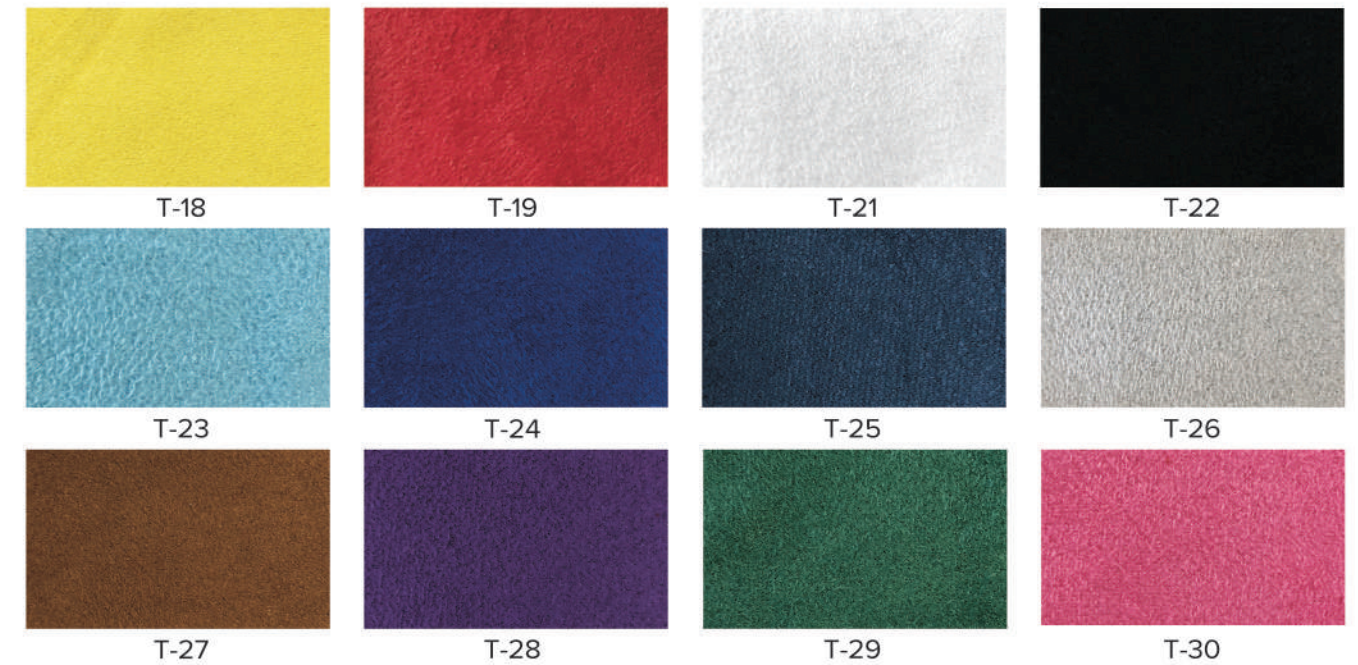
COMBINATION DESIGNS

Fabric C can be used together with other materials, like rhinestones and studs. It can also be used as a layering material.

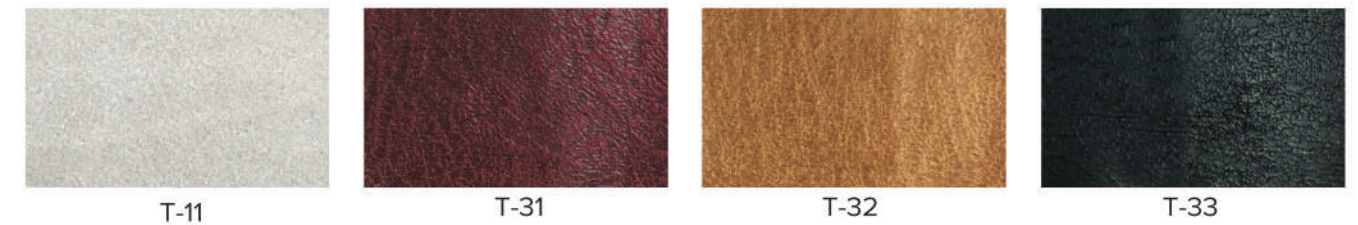


Hot Fix Fabric C

DEERSKIN FABRIC



IMITATED LEATHER FABRIC



INSTRUCTIONS

- 160°C-180°C or 320°F-355°F
- Medium Pressure
- 10S-15S
- Peel warm
- Wash inside out, wash warm, cool dry

IDEAL FOR FABRICS

Cotton, Polyester, Cotton/Poly Blends.

Heat Transfer Print

A GREAT ALTERNATIVE TO SCREEN PRINTING

Transfers are made using a new technology that prints images and designs on a specialized film material.

We offer 4 different types of transfer print: regular, glitter, 3D, and reflective.

REGULAR TRANSFER PRINT

A basic essential, the regular print is great for detailed and complex designs that have over 4 colors. Gradient colors can also be done.



GLITTER TRANSFER PRINT

Glitter appearance with smooth surface. It's usually done in one or two colors.



COMBINATION DESIGNS

Combine with rhinestones, glitter, foil and etc, on one sheet.

REGULAR TRANSFER PRINT & GLITTER



⌚ Normal production time is 10-15 business days.

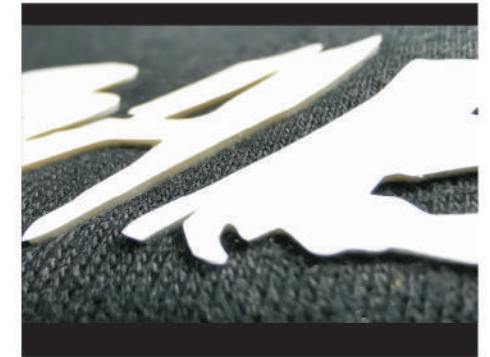
REGULAR TRANSFER PRINT & FOIL



Heat Transfer Print

3D TRANSFER PRINT

Silicone material for a raised 3D effect.



REFLECTIVE TRANSFER PRINT

Reflects when light shines upon it at different angles.



INSTRUCTIONS

🔥 150-160°C or 300-320°F

👤 Medium

🕒 8S-12S

👉 Peel warm/Cold

🧺 Wash inside out, wash warm, cool dry

IDEAL FOR FABRICS

Cotton, Polyester, Cotton/Poly Blends

COMBINATION DESIGNS

REGULAR TRANSFER PRINT & FABRIC



⌚ Normal production time is 10-15 business days.

REGULAR TRANSFER PRINT



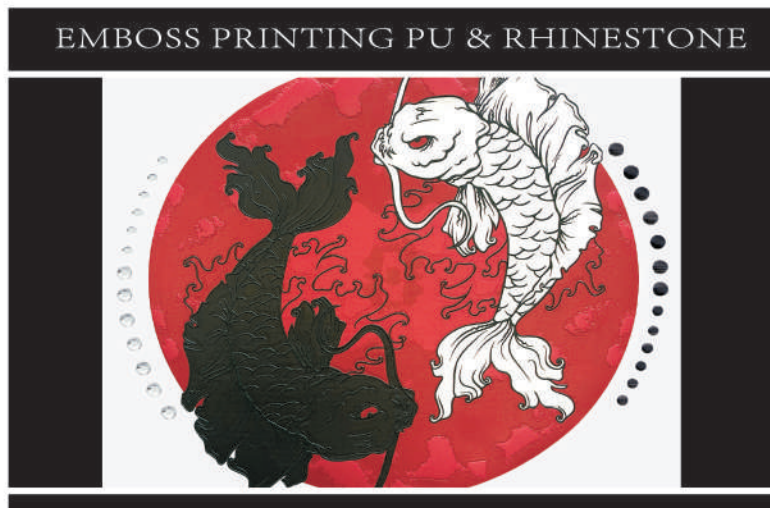
Printing PU

THE NEW TYPE OF DIGITAL PRINTING WITH LOW MINIMUM

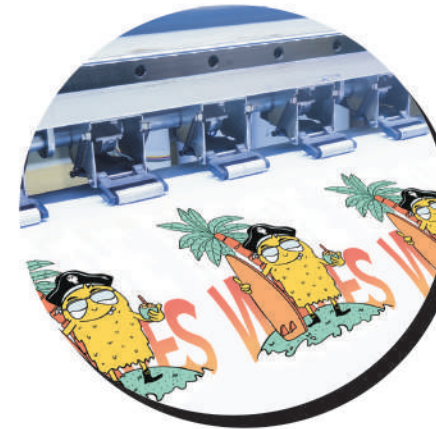
A new digital printable PU material made in Korea. It is the thinnest material out of all the printing materials we carry. The ink is eco-friendly and suitable for all types of fabrics. There are three types of printing PU: regular, reflective, and emboss printing PU.

COMBINATION DESIGNS

Can be combined with many other materials but cannot be the bottom layer.



Printing PU



REGULAR PRINTING PU

Colors can be matched to custom designs. Priced by size rather than number of colors so designs can have many colors with no upcharge.

REFLECTIVE PRINTING PU

Printing PU but with a reflective surface. It appears black during the day and can be illuminated by light when dark.



EMBOSSS PRINTING PU

Printing PU with 3D lines added on top to create a textured appearance and feel.

INSTRUCTIONS

- 160-180°C or 320-355°F
- Medium
- 10-15S

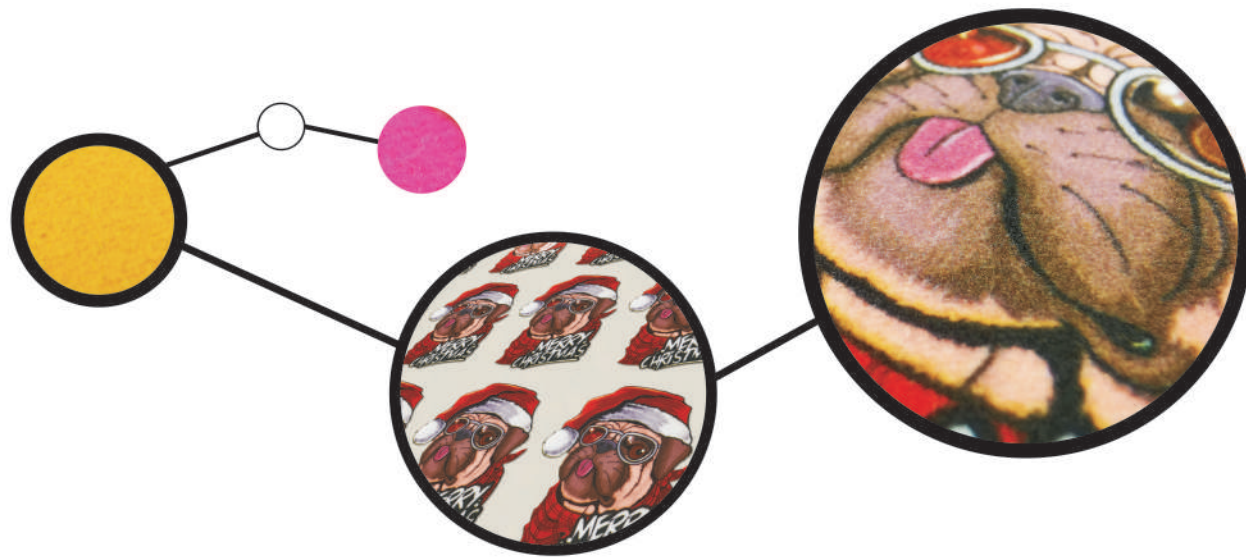
- Peel warm
- Wash inside out, wash warm, cool dry

IDEAL FOR FABRICS

Cotton, Polyester, Cotton/Poly Blends

Super Soft Printable Flock

Softer and better hand feel compared to regular flock.
Customize detailed and colorful designs to be printed as flock.
Combine with other materials or use as a bottom layer.



COMBINATION DESIGNS

Can be combined with most of our current materials, including being used as a layering material.

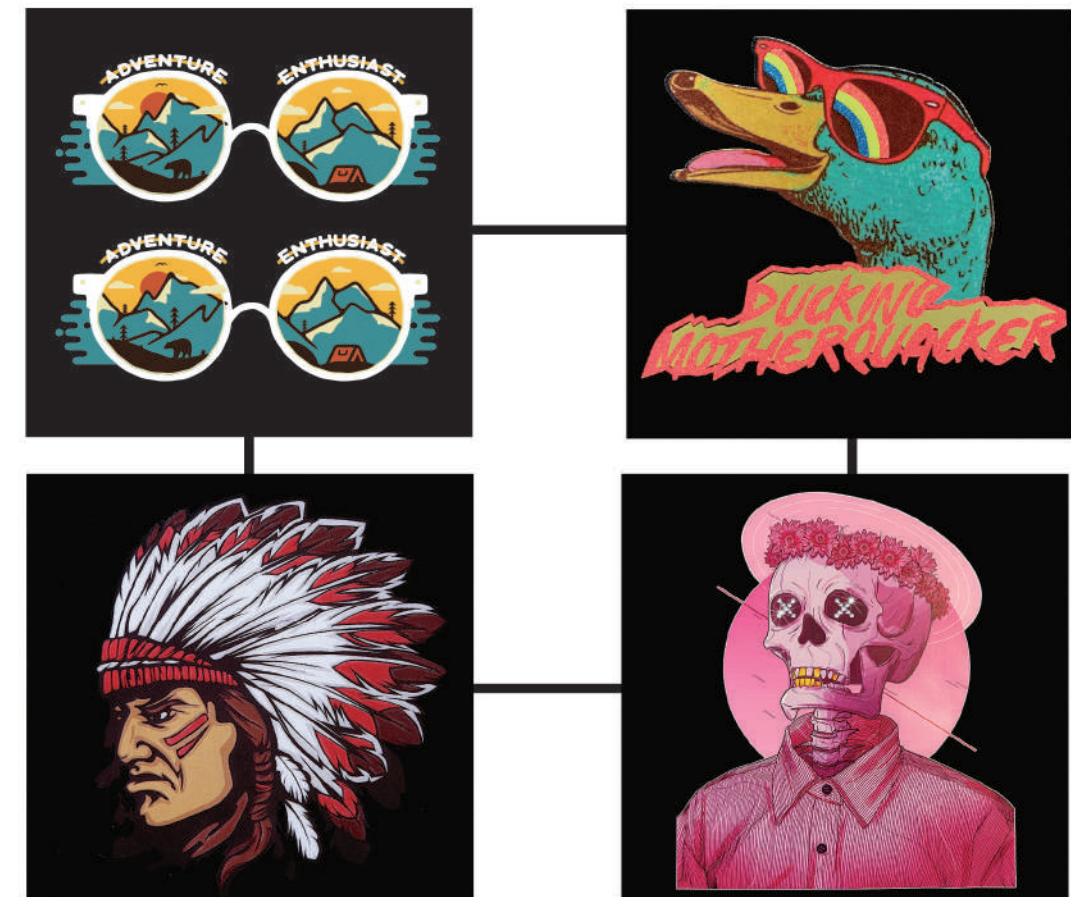


Other Printable Fabrics

Choose from different textured base fabrics: satin, twill, and coarse texture.



Other materials like rhinestones and vinyl can be layered on top of these printing fabrics for a unique 3D effect.



Printable Gold & Silver Stretchable Foil

- Print complicated multi-colored designs with a metallic effect.
- Choose from either gold or silver as the foundation material to be printed on.
- Thinner with more stretch than normal film material.
- Eco-friendly material and printing process!
- We can also create a slight raised effect by using ink UV printing.

COMBINATION DESIGNS

This printing technique can be combined with different materials.



NOTES: When choosing gold or silver as the foundation color, the final design color will be different than the original design due to the influence of the foundation color as seen below:



Printable Glitter

- Print your design with a glitter layer on top and like our regular glitter, the flakes will not come off. This allows for more detailed designs that you can't get with classic glitter vinyl.
- Designs of the same size are the same price regardless of the number of colors.
- Try using printable glitter in a combination with rhinestones, regular glitter, and more!



COMBINATION DESIGNS



Embroidery Patch

- A classic apparel decoration often used for hats, jackets, denim, and polos.
- Our most popular products are chenille and the combinations of using twill and embroidery, and rhinestones and embroidery.
- We can also incorporate other materials such as pearls and sequins.

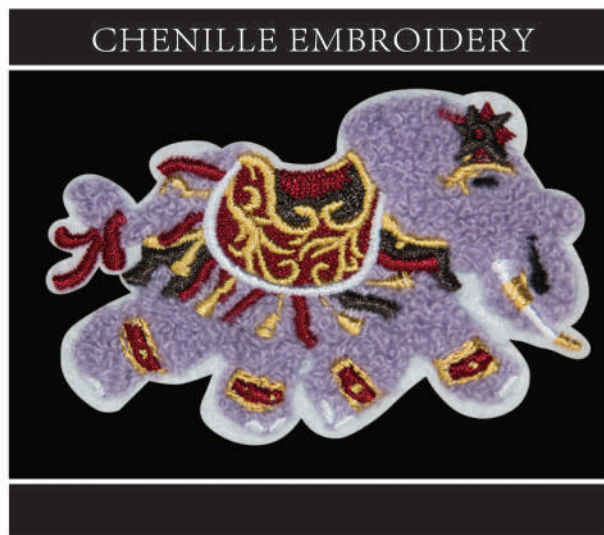


① MOQ 24 pieces, except the Chenille Embroidery MOQ 200 pieces.

INSTRUCTIONS

🔥 160-180°C or 320-355°F 🚶 Medium pressure ⌚ 8S-12S

COMBINATION DESIGNS



Special Patch

- Patches made using heat transfer materials. A fabric is used as the bottom layer with any material in our catalog on top.
- Choose the type of backing: iron on glue, sticker, or Velcro.

COMBINATION DESIGNS



① MOQ 24 pieces, except the printed patches MOQ 50 pieces.

INSTRUCTIONS

🔥 160-180°C or 320-355°F
 🚶 Medium pressure
 ⌚ 8S-12S
 🧻 Peel warm
 🧺 Wash inside out, wash warm, cool dry

IDEAL FOR FABRICS

Cotton, Polyester, Cotton/Poly Blends

Silicone Transfer

- We offer 5 different kinds of silicone transfers: flat, bump, hollow, toothbrush, and silicone roll.
- Each type has a selection of 5 colors, and can either be made as a heat transfer or as a sewn on.
- Skin-friendly and eco-friendly, these are great for sportswear, outdoor clothing, hats, and bags.



FLAT SILICONE

- Perfect for small logos and labels on sportswear and hats!
- We offer two different thicknesses: 0.5 mm and 0.8 mm.
- Choose transparent or non-transparent for the bottom layer.

BUMP SILICONE

A silicone label with two levels, a base layer and a raised layer. The bottom thickness is 0.5 mm with an overall thickness of 0.8 mm.



HOLLOW SILICONE

We offer two different thicknesses: 0.5mm and 0.8mm. Custom thickness available upon request.



Silicone Craft Series



TOOTH BRUSH SILICONE

A silicone base layer with soft silicone bristles on top for a unique touch texture.

SILICONE ROLL

A thin silicone material with three thicknesses: 0.2mm, 0.3mm, and 0.5mm. Great for making lettering or lines with a more subtle 3D style.



CUSTOM-SEWN SILICONE LOGOS

Any of the listed silicone series material with an added bottom layer to create an edge that allows for sewing.

INSTRUCTIONS

160-180°C or 320-355°F

Peel warm

Press twice: 8s on the front and 20s on the back

IDEAL FOR FABRICS

Cotton, Polyester, Cotton/Poly Blends

HEAT PRESS SERVICE

Besides the hot fix transfer, we also provide t-shirt and hoodie heat press service. You can receive the complete T-shirt or Hoodie with logo on it.



In addition, we provide GILDAN and PRINTSTAR t-shirt and hoodie, Please email us for more information.



TERMAND CONDITIONS

COPYRIGHT	INDEMNIFY	CUSTOMER WARRANTS	PERMISSION
The unauthorized use of registered trademarks and copyrighted logos or designs is illegal. When manufacturing product which incorporate such logos, we assume that you have obtained permission. We do, however, reserve the right to ask for written confirmation of this permission.	CSTAR accepts no liability for any unauthorized use of such material. You agree to indemnify the company for any loss due to the unauthorized use of such logos or designs. We reserve the right to refuse to manufacture any design considered to be in poor taste or offensive.	Customer warrants CSTAR against copyright liability on their submitted artwork. A Hold Harmless may also be required prior to production.	Unless we are given permission to use or display the customers' designs on our website, we have no right on the usage of any customers' designs. Meanwhile, we reserve the copyright on all of our stock designs. Customers are also responsible for having any and all commercial licenses for copyrighted materials (ie. Disney, NFL, etc.)
REQUIREMENTS	CONFIRMATION	PAYMENT	MOQ
Please confirm the virtual layout meeting your requirements, such as size and color(s). After receiving your verification and quantity needed, an invoice will be emailed to you for final	We will not accept any changes or cancellations on orders already in production.	After receiving payment, we will begin production. We accept Paypal, all major credit cards, and company checks (check payment may cause possible delay of production). Production usually requires 2-3 business days for regular orders.	Minimum order for a new custom design is 24 pieces. For orders less than 24 pcs, an additional \$3 per template fee (number of templates vary depending on design) will be applied to the total cost. We will not accept any order less than \$15 per design or layout number, this template fee will be credited back once your orders reach the minimum of 24pcs.
	SUPPLY DESIGN		

CSTAR GUARANTEE

- Please inspect the items carefully. Test the product before running the production. Contact us immediately if problem exists.
- CSTAR's responsibility is limited to reproduction of transfers only.
- CSTAR is not responsible for improper applications.
- CSTAR transfers are not warranted if applied to nylon or weather-proofed fabric.

DELIVERIES, CANCELLED ORDERS AND RETURN AUTHORIZATION

► SHIPPING

All orders are shipped from China facility by UPS, DHL, or FedEx, either using your shipping account or ours. Delivery normally takes 2 to 3 business days. All quoted delivery times are based on delivery of the common carrier. We assume no responsibility for the failure of any carrier to fulfill a promised delivery time. We are not responsible for carrier or shipment delays, customs clearance, border delays, and other hazards (strikes, weather, etc.)

► CANCELLED ORDERS

Cancelled orders in production will be billed as complete.

► RETURN POLICY

Please send the items back to us within 30 days of receiving the product(s). Please explain how and where the transfers are defective, damaged, or incorrectly shipped. Upon return of the item, we will issue a refund for the defect order.