



Certificate of Analysis

CANNABUSINESS LABORATORIES, LLC

Customer:

OP Innovates, LLC
938 Manchester St
Lexington, KY 40508

Sample ID **231215004**
Order Number **CB231215002**
Sample Name **MNGPCH-325C-13T-N**

External Sample ID

Batch Number **PL120523A2 108**

Received Date **12/15/2023**

COA Released **12/19/2023**

Product Type **Edible**

Sample Type **Edible**

Comments

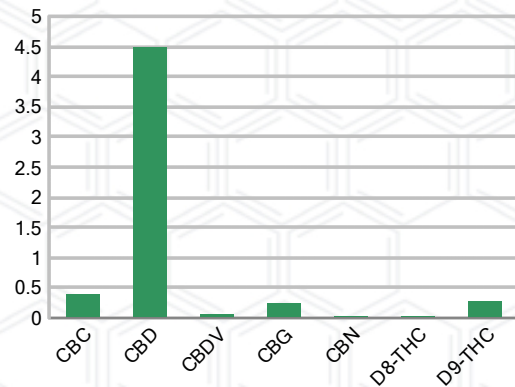
CANNABINOID PROFILE

Analyte	LOQ (%)	% Weight	mg/g
CBC	0.01	0.392	3.919
CBD	0.01	4.477	44.77
CBDa	0.01	ND	ND
CBDV	0.01	0.058	0.579
CBG	0.01	0.245	2.452
CBGa	0.01	ND	ND
CBN	0.01	0.028	0.280
d8-THC	0.01	0.017	0.172
d9-THC	0.01	0.268	2.681
THCa	0.01	ND	ND
Total Cannabinoids		5.485	54.85
Total Potential THC		0.268	2.681
Total Potential CBD		4.477	44.77
Total Potential CBG		0.245	2.452
Ratio of Total Potential CBD to Total Potential THC			26.71 : 1
Ratio of Total Potential CBG to Total Potential THC			0.91 : 1

SAMPLE IMAGE



CANNABINOIDS % Weight



*Total Cannabinoids refers to the sum of all cannabinoids detected.

*Total Potential CBD = (0.877 x CBDa) + CBD. *Total Potential THC = (0.877 x THCa) + THC. *Total Potential CBG = (0.877 x CBGa) + CBG.

*Total Potential THC/CBD are calculated to take into account the loss of an acid group during decarboxylation.



J. Hobgood
Laboratory Manager
SIGNATURE

Jamie Hobgood
LABORATORY MANAGER

12/19/2023 9:57 AM
DATE

This product has been tested by Cannabusiness Laboratories using validated testing methodologies and a quality system. Values reported relate only to the product tested. Cannabusiness Laboratories makes no claims as to the efficacy, safety, or other risks associated with any detected or non-detected levels of any compounds reported herein. This Certificate shall not be reproduced except in full, without the written permission of Cannabusiness Laboratories. Photo is of sample received by the lab and may vary from final packaging. The results apply to the sample as received.



Certificate of Analysis



Certificate of Analysis

CANNABUSINESS LABORATORIES, LLC

Customer

OP Innovates, LLC
 938 Manchester St
 Lexington, KY 40508



Sample Name: MNGPCH-325C-13T-N

Sample ID: 231215004

Order Number: CB231215002

Product Type: Edible

Sample Type: Edible

Received Date: 12/15/2023

Batch Number: PL120523A2 108

COA released: 12/19/2023 9:57 AM

Potency (mg/g)

Date Tested: 12/15/2023

Method: CB-SOP-028

Instrument:

0.268 % Total THC	4.477 % Total CBD	5.485 % Total Cannabinoids	54.85 mg/g Total Cannabinoids
-----------------------------	-----------------------------	--------------------------------------	---

Analyte	Result	Units	LOQ	Result	Units
CBC (Cannabichromene)	0.392	%	0.010	3.919	mg/g
CBD (Cannabidiol)	4.477	%	0.010	44.77	mg/g
CBDa (Cannabidiolic Acid)	ND	%	0.010	ND	mg/g
CBDV (Cannabidivarin)	0.058	%	0.010	0.579	mg/g
CBG (Cannabigerol)	0.245	%	0.010	2.452	mg/g
CBGa (Cannabigerolic Acid)	ND	%	0.010	ND	mg/g
CBN (Cannabinol)	0.028	%	0.010	0.280	mg/g
D8-THC (D8-Tetrahydrocannabinol)	0.017	%	0.010	0.172	mg/g
D9-THC (D9-Tetrahydrocannabinol)	0.268	%	0.010	2.681	mg/g
THCa (Tetrahydrocannabinolic Acid)	ND	%	0.010	ND	mg/g



J. Hobgood
 Laboratory Manager

Jamie Hobgood

12/19/2023 9:57 AM

SIGNATURE

DATE

NT = Not tested, ND = Not detected; LOQ = Limit of Quantitation; <LOQ = Detected; >ULOL = Above upper limit of linearity; CFU/g = Colony forming units per 1 gram; TNTC = Too numerous to count

This product has been tested by CannaBusiness Laboratories using validated testing methodologies and a quality system. Values reported relate only to the product tested. CannaBusiness Laboratories makes no claims as to the efficacy, safety, or other risks associated with any detected or non-detected levels of any compounds reported herein. This Certificate shall not be reproduced except in full, without the written permission of CannaBusiness Laboratories. Photo is of sample received by the lab and may vary from final packaging. The results apply to the sample as received.