



Certificate of Analysis

CANNABUSINESS LABORATORIES, LLC

Customer:

OP Innovates, LLC
938 Manchester St
Lexington, KY 40508

Sample ID **240205027**
Order Number **CB240205006**
Sample Name **MNGPCH-325C-13T-N**

Received Date **2/5/2024**
COA Released **2/9/2024**

External Sample ID
Batch Number **PL012324B2**

Product Type **Edible**
Sample Type **Edible**

Comments

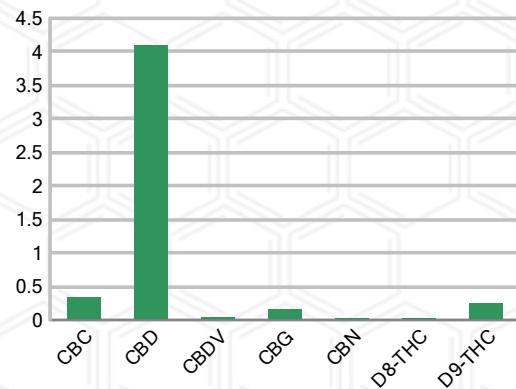
CANNABINOID PROFILE (Product Size = 6.07 g)

Analyte	LOQ (%)	% Weight	mg/g	mg/unit
CBC	0.01	0.331	3.314	20.12
CBD	0.01	4.098	40.98	248.70
CBDa	0.01	ND	ND	ND
CBDV	0.01	0.037	0.374	2.27
CBG	0.01	0.159	1.586	9.63
CBGa	0.01	ND	ND	ND
CBN	0.01	0.019	0.188	1.14
d8-THC	0.01	0.021	0.208	1.26
d9-THC	0.01	0.247	2.471	15.00
THCa	0.01	ND	ND	ND
Total Cannabinoids		4.912	49.12	298.20
Total Potential THC		0.247	2.471	15.00
Total Potential CBD		4.098	40.98	248.70
Total Potential CBG		0.159	1.586	9.63
Ratio of Total Potential CBD to Total Potential THC				26.59 : 1
Ratio of Total Potential CBG to Total Potential THC				0.64 : 1

SAMPLE IMAGE



CANNABINOIDS % Weight



*Total Cannabinoids refers to the sum of all cannabinoids detected.

*Total Potential CBD = (0.877 x CBDa) + CBD. *Total Potential THC = (0.877 x THCa) + THC. *Total Potential CBG = (0.877 x CBGa) + CBG.

*Total Potential THC/CBD are calculated to take into account the loss of an acid group during decarboxylation.



J. Hobgood
Laboratory Manager
SIGNATURE

Jamie Hobgood
LABORATORY MANAGER

02/09/2024 10:56 AM
DATE

This product has been tested by CannaBusiness Laboratories using validated testing methodologies and a quality system. Values reported relate only to the product tested. CannaBusiness Laboratories makes no claims as to the efficacy, safety, or other risks associated with any detected or non-detected levels of any compounds reported herein. This Certificate shall not be reproduced except in full, without the written permission of CannaBusiness Laboratories. Photo is of sample received by the lab and may vary from final packaging. The results apply to the sample as received.



Certificate of Analysis



Certificate of Analysis

CANNABUSINESS LABORATORIES, LLC

Customer

OP Innovates, LLC
938 Manchester St
Lexington, KY 40508



Sample Name: MNGPCH-325C-13T-N

Sample ID: 240205027

Order Number: CB240205006

Product Type: Edible

Sample Type: Edible

Received Date: 02/05/2024

Batch Number: PL012324B2

COA released: 02/09/2024 10:56 AM

Potency (mg/g)

Date Tested: 02/06/2024

Method: CB-SOP-028

Instrument:

0.247 % Total THC	4.098 % Total CBD	4.912 % Total Cannabinoids	49.12 mg/g Total Cannabinoids
-----------------------------	-----------------------------	--------------------------------------	---

Analyte	Result	Units	LOQ	Result	Units
CBC (Cannabichromene)	0.331	%	0.010	3.314	mg/g
CBD (Cannabidiol)	4.098	%	0.010	40.98	mg/g
CBDa (Cannabidiolic Acid)	ND	%	0.010	ND	mg/g
CBDV (Cannabidivarin)	0.037	%	0.010	0.374	mg/g
CBG (Cannabigerol)	0.159	%	0.010	1.586	mg/g
CBGa (Cannabigerolic Acid)	ND	%	0.010	ND	mg/g
CBN (Cannabinol)	0.019	%	0.010	0.188	mg/g
D8-THC (D8-Tetrahydrocannabinol)	0.021	%	0.010	0.208	mg/g
D9-THC (D9-Tetrahydrocannabinol)	0.247	%	0.010	2.471	mg/g
THCa (Tetrahydrocannabinolic Acid)	ND	%	0.010	ND	mg/g

Mycotoxins

Date Tested: 02/08/2024

Method: CB-SOP-025

Instrument:

Analyte	Result	Units	LOQ	Result	Analyte	Result	Units	LOQ	Result
Ochratoxin A	ND	ppm	0.010		Aflatoxin B1	ND	ppm	0.010	
Aflatoxin G2	ND	ppm	0.010		Aflatoxin B2	ND	ppm	0.010	
Aflatoxin G1	ND	ppm	0.010						

Microbial

Date Tested: 02/08/2024

Method:

Instrument:

Analyte	Result	Units	LOQ	Result	Analyte	Result	Units	LOQ	Result
STEC (E. coli)	Negative				Salmonella	Negative			
L. monocytogenes	Negative				Yeast/Mold (qPCR)	Absence			



J. Hobgood
Laboratory Manager

Jamie Hobgood

02/09/2024 10:56 AM

SIGNATURE

DATE

NT = Not tested, ND = Not detected, LOQ = Limit of Quantitation; <LOQ = Detected; >ULOL = Above upper limit of linearity; CFU/g = Colony forming units per 1 gram; TNTC = Too numerous to count

This product has been tested by CannaBusiness Laboratories using validated testing methodologies and a quality system. Values reported relate only to the product tested. CannaBusiness Laboratories makes no claims as to the efficacy, safety, or other risks associated with any detected or non-detected levels of any compounds reported herein. This Certificate shall not be reproduced except in full, without the written permission of CannaBusiness Laboratories. Photo is of sample received by the lab and may vary from final packaging. The results apply to the sample as received.