



# Certificate of Analysis

CANNABUSINESS LABORATORIES, LLC

### Customer:

OP Innovates, LLC  
938 Manchester St  
Lexington, KY 40508

Sample ID **231215003**  
Order Number **CB231215002**  
Sample Name **BRAZ-325C-13T-N**

External Sample ID

Batch Number **PL1012524B4**

Received Date **01/25/2024**

COA Released **01/29/2024**

Product Type **Edible**

Sample Type **Edible**

Comments

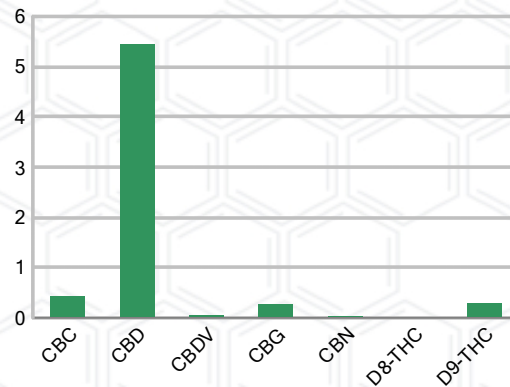
## CANNABINOID PROFILE (Product Size = 5.80 g)

Analyte	LOQ (%)	% Weight	mg/g	mg/unit
CBC	0.01	0.420	4.202	24.37
CBD	0.01	5.438	54.38	315.40
CBDa	0.01	ND	ND	ND
CBDV	0.01	0.051	0.515	2.99
CBG	0.01	0.259	2.592	15.03
CBGa	0.01	ND	ND	ND
CBN	0.01	0.028	0.276	1.60
d8-THC	0.01	0.017	0.173	1.00
d9-THC	0.01	0.279	2.793	16.20
THCa	0.01	ND	ND	ND
<b>Total Cannabinoids</b>		<b>6.493</b>	<b>64.93</b>	<b>376.60</b>
<b>Total Potential THC</b>		<b>0.279</b>	<b>2.793</b>	<b>16.20</b>
<b>Total Potential CBD</b>		<b>5.438</b>	<b>54.38</b>	<b>315.40</b>
<b>Total Potential CBG</b>		<b>0.259</b>	<b>2.592</b>	<b>15.03</b>
<b>Ratio of Total Potential CBD to Total Potential THC</b>				<b>25.49 : 1</b>
<b>Ratio of Total Potential CBG to Total Potential THC</b>				<b>0.93 : 1</b>

## SAMPLE IMAGE



## CANNABINOIDS % Weight



\*Total Cannabinoids refers to the sum of all cannabinoids detected.

\*Total Potential CBD = (0.877 x CBDa) + CBD. \*Total Potential THC = (0.877 x THCa) + THC. \*Total Potential CBG = (0.877 x CBGa) + CBG.

\*Total Potential THC/CBD are calculated to take into account the loss of an acid group during decarboxylation.



*J. Hobgood*  
Laboratory Manager  
SIGNATURE

Jamie Hobgood  
LABORATORY MANAGER

01/29/2024 11:32 AM  
DATE

This product has been tested by CannaBusiness Laboratories using validated testing methodologies and a quality system. Values reported relate only to the product tested. CannaBusiness Laboratories makes no claims as to the efficacy, safety, or other risks associated with any detected or non-detected levels of any compounds reported herein. This Certificate shall not be reproduced except in full, without the written permission of CannaBusiness Laboratories. Photo is of sample received by the lab and may vary from final packaging. The results apply to the sample as received.



# Certificate of Analysis



# Certificate of Analysis

## CANNABUSINESS LABORATORIES, LLC

### Customer

OP Innovates, LLC  
 938 Manchester St  
 Lexington, KY 40508



**Sample Name:** BRAZ-325C-13T-N

**Sample ID:** 231215003

**Order Number:** CB231215002

**Product Type:** Edible

**Sample Type:** Edible

**Received Date:** 01/25/2024

**Batch Number:** PL1012524B4

**COA released:** 01/29/2024 11:32 AM

### Potency (mg/g)

Date Tested: 12/18/2023

Method: CB-SOP-028

Instrument:

<b>0.279 %</b> Total THC	<b>5.438 %</b> Total CBD	<b>6.493 %</b> Total Cannabinoids	<b>64.93 mg/g</b> Total Cannabinoids
-----------------------------	-----------------------------	--------------------------------------	---

Analyte	Result	Units	LOQ	Result	Units
CBC (Cannabichromene)	0.420	%	0.010	4.202	mg/g
CBD (Cannabidiol)	5.438	%	0.010	54.38	mg/g
CBDa (Cannabidiolic Acid)	ND	%	0.010	ND	mg/g
CBDV (Cannabidivarin)	0.051	%	0.010	0.515	mg/g
CBG (Cannabigerol)	0.259	%	0.010	2.592	mg/g
CBGa (Cannabigerolic Acid)	ND	%	0.010	ND	mg/g
CBN (Cannabinol)	0.028	%	0.010	0.276	mg/g
D8-THC (D8-Tetrahydrocannabinol)	0.017	%	0.010	0.173	mg/g
D9-THC (D9-Tetrahydrocannabinol)	0.279	%	0.010	2.793	mg/g
THCa (Tetrahydrocannabinolic Acid)	ND	%	0.010	ND	mg/g



*J. Hobgood*  
 Laboratory Manager

Jamie Hobgood

01/1292024 11:32 AM

SIGNATURE

DATE

NT = Not tested, ND = Not detected; LOQ = Limit of Quantitation; <LOQ = Detected; >ULOL = Above upper limit of linearity; CFU/g = Colony forming units per 1 gram; TNTC = Too numerous to count

This product has been tested by CannaBusiness Laboratories using validated testing methodologies and a quality system. Values reported relate only to the product tested. CannaBusiness Laboratories makes no claims as to the efficacy, safety, or other risks associated with any detected or non-detected levels of any compounds reported herein. This Certificate shall not be reproduced except in full, without the written permission of CannaBusiness Laboratories. Photo is of sample received by the lab and may vary from final packaging. The results apply to the sample as received.