



Certificate of Analysis

CANNABUSINESS LABORATORIES, LLC

Customer:

OP Innovates, LLC
938 Manchester St
Lexington, KY 40508

Sample ID **231215001**
Order Number **CB231215003**
Sample Name **BRAZ-325C-13T-N**

External Sample ID

Batch Number **PL011424B3**

Received Date **01/15/2024**

COA Released **01/18/2024**

Product Type **Edible**

Sample Type **Edible**

Comments

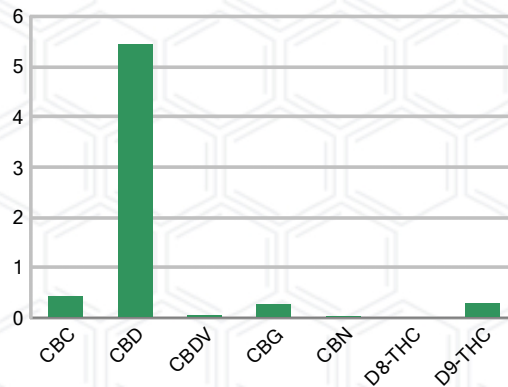
CANNABINOID PROFILE (Product Size = 5.80 g)

Analyte	LOQ (%)	% Weight	mg/g	mg/unit
CBC	0.01	0.420	4.202	24.37
CBD	0.01	5.438	54.38	315.40
CBDa	0.01	ND	ND	ND
CBDV	0.01	0.051	0.515	2.99
CBG	0.01	0.259	2.592	15.03
CBGa	0.01	ND	ND	ND
CBN	0.01	0.028	0.276	1.60
d8-THC	0.01	0.017	0.173	1.00
d9-THC	0.01	0.279	2.793	16.20
THCa	0.01	ND	ND	ND
Total Cannabinoids		6.493	64.93	376.60
Total Potential THC		0.279	2.793	16.20
Total Potential CBD		5.438	54.38	325.40
Total Potential CBG		0.259	2.592	15.03
Ratio of Total Potential CBD to Total Potential THC				25.76 : 1
Ratio of Total Potential CBG to Total Potential THC				0.93 : 1

SAMPLE IMAGE



CANNABINOIDS % Weight



*Total Cannabinoids refers to the sum of all cannabinoids detected.

*Total Potential CBD = (0.877 x CBDa) + CBD. *Total Potential THC = (0.877 x THCa) + THC. *Total Potential CBG = (0.877 x CBGa) + CBG.

*Total Potential THC/CBD are calculated to take into account the loss of an acid group during decarboxylation.



J. Hobgood
Laboratory Manager
SIGNATURE

Jamie Hobgood
LABORATORY MANAGER

01/18/2024 11:32 AM
DATE

This product has been tested by CannaBusiness Laboratories using validated testing methodologies and a quality system. Values reported relate only to the product tested. CannaBusiness Laboratories makes no claims as to the efficacy, safety, or other risks associated with any detected or non-detected levels of any compounds reported herein. This Certificate shall not be reproduced except in full, without the written permission of CannaBusiness Laboratories. Photo is of sample received by the lab and may vary from final packaging. The results apply to the sample as received.



Certificate of Analysis



Certificate of Analysis

CANNABUSINESS LABORATORIES, LLC

Customer

OP Innovates, LLC
 938 Manchester St
 Lexington, KY 40508



Sample Name: BRAZ-325C-13T-N

Sample ID: 231215001

Order Number: CB231215003

Product Type: Edible

Sample Type: Edible

Received Date: 01/15/2024

Batch Number: PL011424B3

COA released: 01/18/2024 11:32 AM

Potency (mg/g)	
Date Tested: 12/18/2023	Method: CB-SOP-028
Instrument:	

0.279 % Total THC	5.438 % Total CBD	6.493 % Total Cannabinoids	64.93 mg/g Total Cannabinoids
-----------------------------	-----------------------------	--------------------------------------	-----------------------------------------

Analyte	Result	Units	LOQ	Result	Units
CBC (Cannabichromene)	0.420	%	0.010	4.202	mg/g
CBD (Cannabidiol)	5.438	%	0.010	54.38	mg/g
CBDa (Cannabidiolic Acid)	ND	%	0.010	ND	mg/g
CBDV (Cannabidivarin)	0.051	%	0.010	0.515	mg/g
CBG (Cannabigerol)	0.259	%	0.010	2.592	mg/g
CBGa (Cannabigerolic Acid)	ND	%	0.010	ND	mg/g
CBN (Cannabinol)	0.028	%	0.010	0.276	mg/g
D8-THC (D8-Tetrahydrocannabinol)	0.017	%	0.010	0.173	mg/g
D9-THC (D9-Tetrahydrocannabinol)	0.279	%	0.010	2.793	mg/g
THCa (Tetrahydrocannabinolic Acid)	ND	%	0.010	ND	mg/g



J. Hobgood
 Laboratory Manager

Jamie Hobgood

101/18/2024 11:32 AM

SIGNATURE

DATE

NT = Not tested, ND = Not detected; LOQ = Limit of Quantitation; <LOQ = Detected; >ULOL = Above upper limit of linearity; CFU/g = Colony forming units per 1 gram; TNTC = Too numerous to count

This product has been tested by CannaBusiness Laboratories using validated testing methodologies and a quality system. Values reported relate only to the product tested. CannaBusiness Laboratories makes no claims as to the efficacy, safety, or other risks associated with any detected or non-detected levels of any compounds reported herein. This Certificate shall not be reproduced except in full, without the written permission of CannaBusiness Laboratories. Photo is of sample received by the lab and may vary from final packaging. The results apply to the sample as received.