



Certificate of Analysis

CANNABUSINESS LABORATORIES, LLC

Customer:

OP Innovates, LLC
938 Manchester St
Lexington, KY 40508

Sample ID **240320001**

Order Number **CB240320001**

Sample Name **BRAZ-325C-13T PL030424A4**

External Sample ID

Batch Number

Received Date **3/20/2024**

COA Released **3/21/2024**

Product Type **Edible**

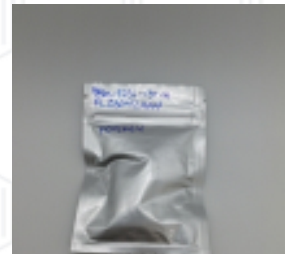
Sample Type **Edible**

Comments

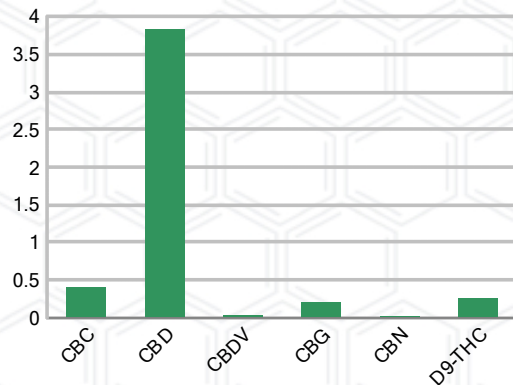
CANNABINOID PROFILE (Product Size = 5.43 g)

Analyte	LOQ (%)	% Weight	mg/g	mg/unit
CBC	0.01	0.411	4.112	22.33
CBD	0.01	3.826	38.26	207.80
CBDa	0.01	ND	ND	ND
CBDV	0.01	0.035	0.349	1.90
CBG	0.01	0.201	2.009	10.91
CBGa	0.01	ND	ND	ND
CBN	0.01	0.019	0.191	1.04
d8-THC	0.01	ND	ND	ND
d9-THC	0.01	0.254	2.540	13.79
THCa	0.01	ND	ND	ND
Total Cannabinoids		4.746	47.46	257.70
Total Potential THC		0.254	2.540	13.79
Total Potential CBD		3.826	38.26	207.80
Total Potential CBG		0.201	2.009	10.91
Ratio of Total Potential CBD to Total Potential THC				25.06 : 1
Ratio of Total Potential CBG to Total Potential THC				0.79 : 1

SAMPLE IMAGE



CANNABINOIDS % Weight



*Total Cannabinoids refers to the sum of all cannabinoids detected.

*Total Potential CBD = (0.877 x CBDa) + CBD. *Total Potential THC = (0.877 x THCa) + THC. *Total Potential CBG = (0.877 x CBGa) + CBG.

*Total Potential THC/CBD are calculated to take into account the loss of an acid group during decarboxylation.



J. Hobgood
Laboratory Manager
SIGNATURE

Jamie Hobgood
LABORATORY MANAGER

03/21/2024 9:47 AM
DATE

This product has been tested by CannaBusiness Laboratories using validated testing methodologies and a quality system. Values reported relate only to the product tested. CannaBusiness Laboratories makes no claims as to the efficacy, safety, or other risks associated with any detected or non-detected levels of any compounds reported herein. This Certificate shall not be reproduced except in full, without the written permission of CannaBusiness Laboratories. Photo is of sample received by the lab and may vary from final packaging. The results apply to the sample as received.



Certificate of Analysis

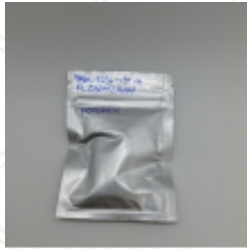


Certificate of Analysis

CANNABUSINESS LABORATORIES, LLC

Customer

OP Innovates, LLC
 938 Manchester St
 Lexington, KY 40508



Sample Name: BRAZ-325C-13T
 PL030424A4
Sample ID: 240320001
Order Number: CB240320001
Product Type: Edible
Sample Type: Edible
Received Date: 03/20/2024
Batch Number:
COA released: 03/21/2024 9:47 AM

Potency (mg/g)
 Date Tested: 03/21/2024 Method: CB-SOP-028
 Instrument:

0.254 % Total THC	3.826 % Total CBD	4.746 % Total Cannabinoids	47.46 mg/g Total Cannabinoids
-----------------------------	-----------------------------	--------------------------------------	---

Analyte	Result	Units	LOQ	Result	Units
CBC (Cannabichromene)	0.411	%	0.010	4.112	mg/g
CBD (Cannabidiol)	3.826	%	0.010	38.26	mg/g
CBDa (Cannabidiolic Acid)	ND	%	0.010	ND	mg/g
CBDV (Cannabidivarin)	0.035	%	0.010	0.349	mg/g
CBG (Cannabigerol)	0.201	%	0.010	2.009	mg/g
CBGa (Cannabigerolic Acid)	ND	%	0.010	ND	mg/g
CBN (Cannabinol)	0.019	%	0.010	0.191	mg/g
D8-THC (D8-Tetrahydrocannabinol)	ND	%	0.010	ND	mg/g
D9-THC (D9-Tetrahydrocannabinol)	0.254	%	0.010	2.540	mg/g
THCa (Tetrahydrocannabinolic Acid)	ND	%	0.010	ND	mg/g



J.Hobgood
 Laboratory Manager

Jamie Hobgood

03/21/2024 9:47 AM

SIGNATURE

DATE

NT = Not tested, ND = Not detected; LOQ = Limit of Quantitation; <LOQ = Detected; >ULOL = Above upper limit of linearity; CFU/g = Colony forming units per 1 gram; TNTC = Too numerous to count

This product has been tested by CannaBusiness Laboratories using validated testing methodologies and a quality system. Values reported relate only to the product tested. CannaBusiness Laboratories makes no claims as to the efficacy, safety, or other risks associated with any detected or non-detected levels of any compounds reported herein. This Certificate shall not be reproduced except in full, without the written permission of CannaBusiness Laboratories. Photo is of sample received by the lab and may vary from final packaging. The results apply to the sample as received.