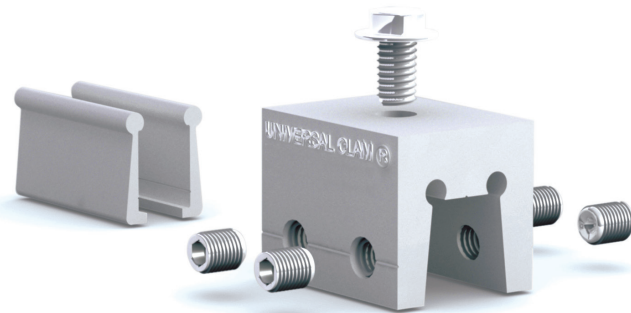


## About Universal® Clamps

The **Universal® Clamp** is designed to attach loads to flanged materials and standing seam roofing. The design allows continuous pressure against the surface resulting in a damage-free\* attachment. Universal® Clamps can be supplied with the necessary stainless steel installation and mounting hardware.



A startup company of Solar Innovations®, an industry leader in architectural glazing systems, Universal® Clamps offers an array of standard clamps that meet common mounting needs. However, if our standard stock of clamps doesn't meet the needs of your application, custom hammers and clamps can be machined, creating nearly limitless configurations. Universal® Clamp's in-house engineering team can assist in determining the correct specifications. Customers need only to provide their location, desired load, and seam profile to be provided with expert feedback and recommendations.

Perpendicular and parallel tests have been performed for all models of the Universal® Clamp.

Universal® Clamps are manufactured in the United States and will provide safe, secure attachment to your roof for years to come.

## Applications

**Universal® Clamps** offers a host of applications that provide safe and damage-free\* solutions for standing seam roof connections.

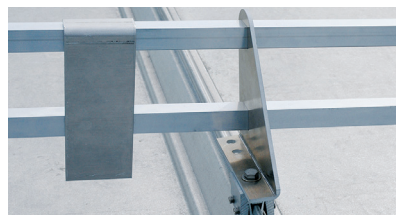
### SOLAR PHOTOVOLTAIC RACKING



### CONDUITS & PLUMBING



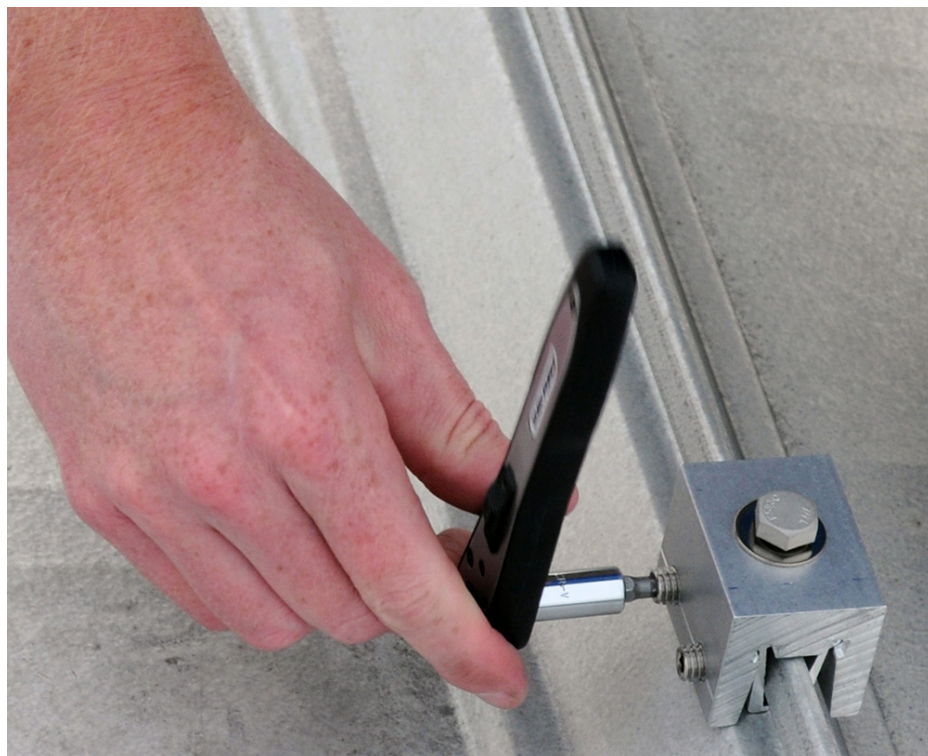
### SNOW GUARDS



### SIGN MOUNTING



\*Damage-free attachment dependent upon proper installation per Universal® Clamps' application and installation instructions.



## How to order

800 618 0669

[universalclamps.com](http://universalclamps.com)

Call to speak with our in-house Universal® Clamp engineers regarding our products or custom options. Quantity pricing is available.

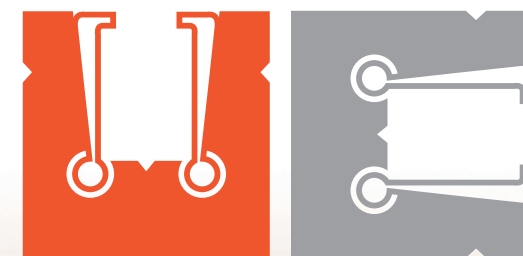
### CONTACT

31 Roberts Road,  
Pine Grove, PA 17963  
[info@universalclamps.com](mailto:info@universalclamps.com)  
Fax: 800 618 0743



**UNIVERSAL®**  
CLAMPS

Universal®  
Patent information: [www.siip.co](http://www.siip.co)  
©Copyright 2020 Universal® Clamps  
All Rights Reserved.



**UNIVERSAL®**



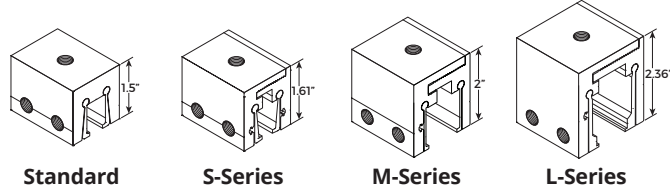
[universalclamps.com](http://universalclamps.com)



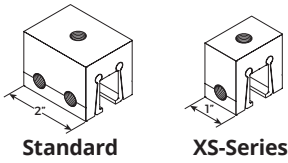
# Key clamp distinctions

If any of our stock clamps, shown in the table to the right, do not meet your needs, the body and hammers can be custom machined to fit any type of standing seam. Contact us for customizable options.

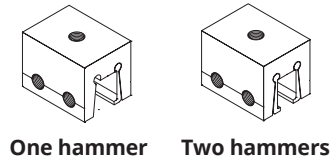
## HEIGHT



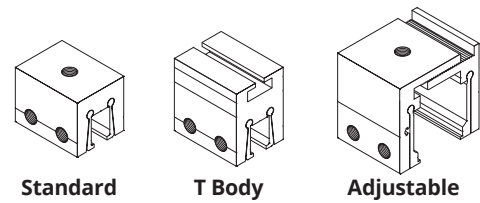
## LENGTH



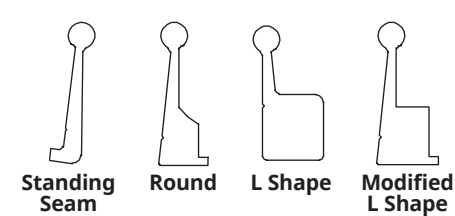
## NUMBER OF HAMMERS



## BODY TYPE



## HAMMER TYPE



MODEL	WIDTH	LENGTH	BODY	SCREW TENSION	PERPENDICULAR		PARALLEL	MODEL	WIDTH	LENGTH	BODY	SCREW TENSION	PERPENDICULAR		PARALLEL
					BOLT TEST (Average)	T-CHANNEL TEST (Averages)	BOLT TEST (Averages)						BOLT TEST (Average)	T-CHANNEL TEST (Averages)	BOLT TEST (Averages)
SI102	1.5"	2"	Standard	16-20 ft/lb	3,151 lbf.	NA	1,817 lbf.	SI132L	2.36"	2"	Adjustable	16-20 ft/lb	2,499 lbf.	NA	1,205 lbf.
SI102XS	1.5"	1"	Standard	16-20 ft/lb	2,016 lbf.	NA	975 lbf.	SI132LXS	2.36"	1"	Adjustable	16-20 ft/lb	2,146 lbf.	NA	588 lbf.
SI104	1.5"	2"	Standard	16-20 ft/lb	3,151 lbf.	NA	2,057 lbf.	SI132M	2"	2"	Adjustable	16-20 ft/lb	NA	3,272 lbf.	328 lbf.
SI104XS	1.5"	1"	Standard	16-20 ft/lb	2,001 lbf.	NA	1,584 lbf.	SI132MXS	2"	1"	Adjustable	16-20 ft/lb	NA	1,210 lbf.	296 lbf.
SI105	1.5"	2"	Standard	16-20 ft/lb	3,151 lbf.	NA	2,251 lbf.	SI132S	1.61"	2"	Adjustable	16-20 ft/lb	3,057 lbf.	NA	1,724 lbf.
SI105XS	1.5"	1"	Standard	16-20 ft/lb	2,024 lbf.	NA	1,067 lbf.	SI132SXS	1.61"	1"	Adjustable	16-20 ft/lb	2,548 lbf.	NA	1,000 lbf.
SI106	1.5"	2"	Standard	16-20 ft/lb	3,151 lbf.	NA	2,172 lbf.	SI134L	2.36"	2"	Adjustable	16-20 ft/lb	2,538 lbf.	NA	1,156 lbf.
SI106XS	1.5"	1"	Standard	16-20 ft/lb	2,007 lbf.	NA	1,049 lbf.	SI134LXS	2.36"	1"	Adjustable	16-20 ft/lb	1,098 lbf.	NA	784 lbf.
SI122	2"	2"	T Body	16-20 ft/lb	3,151 lbf.	2,084 lbf.	1,817 lbf.	SI134S	1.61"	2"	Adjustable	16-20 ft/lb	2,744 lbf.	NA	1,676 lbf.
SI122XS	2"	1"	T Body	16-20 ft/lb	3,151 lbf.	2,015 lbf.	975 lbf.	SI134SXS	1.61"	1"	Adjustable	16-20 ft/lb	2,058 lbf.	NA	1,352 lbf.
SI124	2"	2"	T Body	16-20 ft/lb	3,084 lbf.	2,049 lbf.	2,057 lbf.	SI135L	2.36"	2"	Adjustable	16-20 ft/lb	3,018 lbf.	NA	2,332 lbf.
SI124XS	2"	1"	T Body	16-20 ft/lb	3,151 lbf.	2,020 lbf.	1,584 lbf.	SI135LXS	2.36"	1"	Adjustable	16-20 ft/lb	2,372 lbf.	NA	1,539 lbf.
SI125	2"	2"	T Body	16-20 ft/lb	3,151 lbf.	1,989 lbf.	2,251 lbf.	SI135M	2"	2"	Adjustable	16-20 ft/lb	3,970 lbf.	NA	2,620 lbf.
SI125XS	2"	1"	T Body	16-20 ft/lb	3,151 lbf.	2,009 lbf.	Upon Request	SI135MXS	2"	1"	Adjustable	16-20 ft/lb	1,838 lbf.	NA	848 lbf.
SI126	2"	2"	T Body	16-20 ft/lb	3,151 lbf.	1,997 lbf.	2,172 lbf.	SI135S	1.61"	2"	Adjustable	16-20 ft/lb	2,705 lbf.	NA	2,117 lbf.
SI126XS	2"	1"	T Body	16-20 ft/lb	3,151 lbf.	2,037 lbf.	1,049 lbf.	SI135SXS	1.61"	1"	Adjustable	16-20 ft/lb	2,686 lbf.	NA	1,735 lbf.

Visit [universalclamps.com](http://universalclamps.com) for custom options and seam configurations.

ft/lb = Feet per pound | lbf. = Pounds of force applied