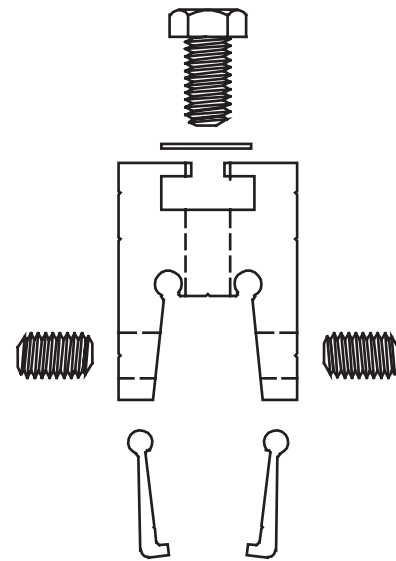
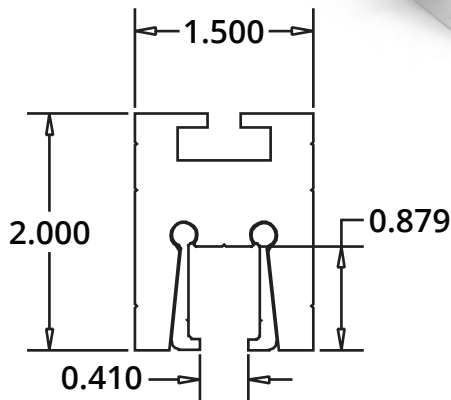
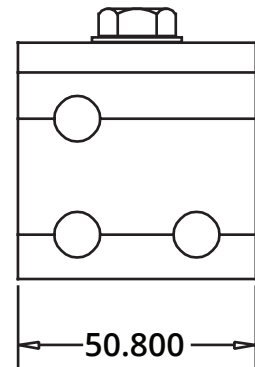
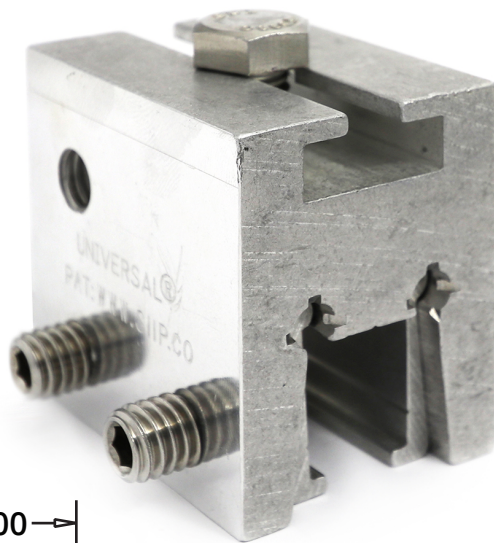
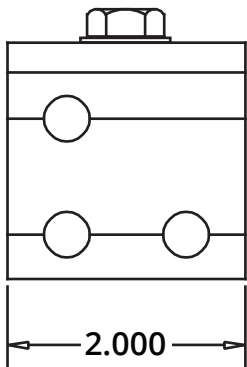


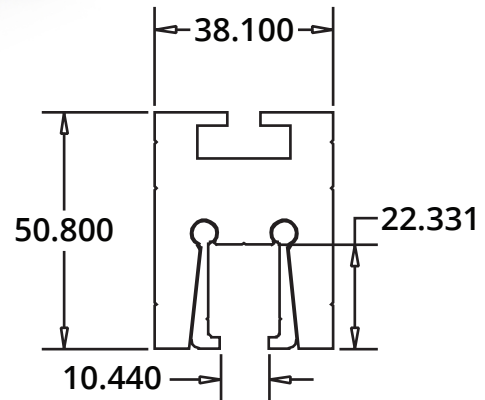
G2 Standing  
Seam Hammer



Exploded view



(Inches)



(Millimeters)



UNIVERSAL® CLAMP - 2-INCH T-BODY

PART NO. SI122

Recommended Screw Tension	Perpendicular Pull Test Results	Parallel Pull Test Results
16-20 ft/lb	3,151 lbf.	1,817 lbf.