
USER MANUAL

**MODEL NUMBER:
SP1.5L
SP1.5LBK
and related units**

1.5 Liter Pump-Up Spray Unit

English (Original Instructions)

READ ALL INSTRUCTIONS BEFORE OPERATING EQUIPMENT

WARNING



Read this manual completely and understand the machine before operating or servicing it.

- Read all instructions before installing or operating unit.
- Always wear appropriate personal protective equipment (PPE) when operating or servicing unit.
- Always follow all chemical safety precautions and handling instructions provided by the chemical manufacturer and Safety Data Sheet (SDS).
- If this unit is modified or serviced with parts not listed in this manual, the unit may not operate correctly.
- Never point the discharge wand at yourself, another person, or any object you do not want covered in chemical.
- Never leave unit unattended while pressurized.
- Always depressurize unit before attempting to remove the pump assembly.
- Always depressurize unit after use (as described in the After Use Instructions). Always store unit depressurized.
- Do not pressurize unit by any means other than the built-in pump assembly.
- Do not modify or remove pressure relief valve. Do not use unit if pressure relief valve is not operational.
- Always flush the unit with fresh water when switching from an alkaline to an acid or an acid to an alkaline.
- Always carry unit by the carrying handle. Never lift or carry the unit by the pump handle or the wand.
- Never use unit with hydrocarbons or flammable products.
- Do not exceed a fluid temperature of 100°F (37°C).

PROTECT THE ENVIRONMENT

Please dispose of packaging materials, old machine components, and hazardous fluids in an environmentally safe way according to local waste disposal regulations.



Always remember to recycle.

*Specifications and parts are subject to change without notice.

REQUIREMENTS	
Liquid temperature range	40-100°F (4.4-37°C)
Chemical compatibility	Chemical products used with this equipment must be formulated for this type of application and compatible with unit materials and pump seals. For more information on chemical compatibility, consult the manufacturer or SDS for your product or contact our customer service department.

SPECIFICATIONS	
Power type	Manual
Chemical pickup type	Draws from pre-mixed solution
Number of products unit can draw from	One product
Operating Capacity	0.3 gallon (1.1 liter)
Discharge wand/tip type	Adjustable cone nozzle that ranges from spray to stream
Output distance	1-8 ft (0.3-2.4 m)
Output volume	10-26 oz/min
Pump seals	Viton
Run time on full tank	30 seconds to 1 minute and 45 seconds, depending on nozzle setting

READ ALL INSTRUCTIONS BEFORE OPERATING EQUIPMENT

Operation Instructions:

1. Confirm air pressure is completely released from unit by activating the pressure relief valve (located on the side of the pump assembly (LC-PA-SP1.5L)).
2. Securely hold the unit and unscrew the pump assembly (LC-PA-SP1.5L) from the tank (TANK1.5L).
3. Follow all instructions from chemical manufacturer. Fill tank 3/4 full with pre-mixed solution.
Note: Do not overfill tank with solution.
4. Securely hold the tank (TANK1.5L) and screw the pump assembly (LC-PA-SP1.5L) on.
5. Pressurize the tank by pumping approximately 20 to 25 times, or until it becomes difficult to pump.
Note: Do not overfill tank with air. The pressure relief valve will leak if the air pressure is too high.
6. To start spraying, point the wand assembly at the area you wish to spray and press down on the On/Off control to discharge solution. Release On/Off control to stop spraying.
7. Spray nozzle can be adjusted by rotating it. Rotate clockwise to narrow pattern. Rotate counterclockwise for wider pattern

After Use Instructions:

1. Release air pressure from unit after each use by activating the pressure relief valve (located on the side of the pump assembly (LC-PA-SP1.5L)).
2. Empty all solution in tank and run fresh water through unit to rinse parts thoroughly.

Maintenance Instructions:

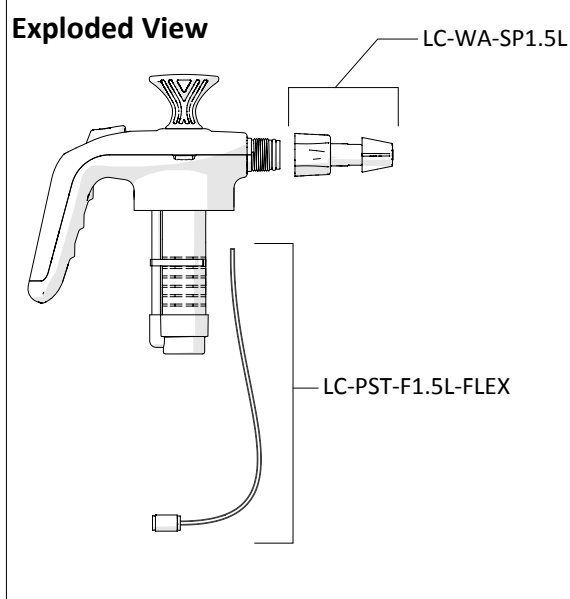
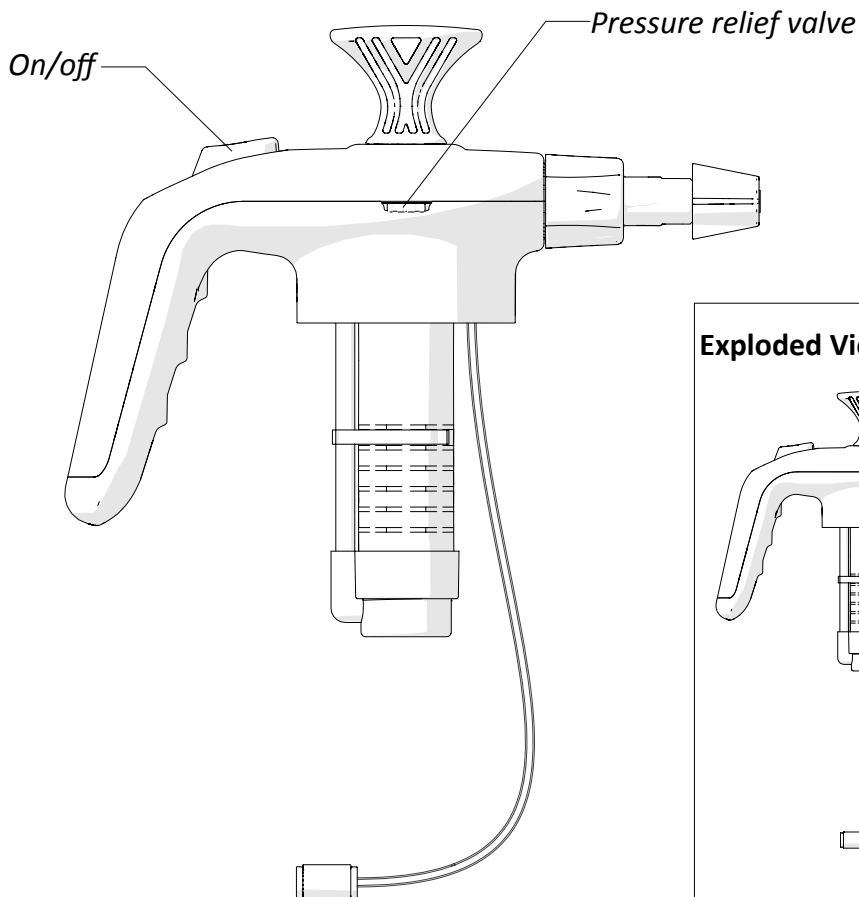
Warning: Always depressurize unit before performing maintenance.

To keep your unit operating properly, periodically perform the following maintenance procedures:

- Check the pump assembly for wear and leaks.
- Check the suction tube and screen for debris and clean as needed.
- Periodically lubricate the pump seal with a food safe lubricant. To lubricate the pump seal, raise pump handle and apply 5 to 10 drops of food safe lubricant between pump and pump sleeve.
Note: NEVER USE LUBRICANTS SUCH AS WD40.

READ ALL INSTRUCTIONS BEFORE OPERATING EQUIPMENT

**PUMP ASSEMBLY
ITEM NUMBER: LC-PA-SP1.5L**



ITEM NUMBER	DESCRIPTION
LC-PA-SP1.5L	PUMP ASSEMBLY FOR 1.5L SPRAY UNIT
LC-PST-1.5L-FLEX	FLEXIBLE POLY SUPPLY TUBE FOR 1.5L PUMP UP
TANK1.5L	1.5L TANK-WHITE
TANK1.5LBK	1.5L TANK-BLACK
LC-WA-SP1.5L	WAND ASSEMBLY FOR SP1.5L PUMP UP

**TANKS
ITEM NUMBERS: TANK1.5L, TANK1.5LBK**

