

Family
HIGH PERFORMANCE COOKING RANGE

Section
ELECTRIC SALAMANDER

Model
SDSM7E

Code
CR0957139

ELECTRONIC SALAMANDER M70

Electric salamander constructed in Aisi 304 stainless steel. Ideal for adding the finishing touch to dishes, making gratins or reheating food. Movable heating element with height from 115 to 220 mm. Tray with plate presence sensor mm. 700x365 GN4/3. Control panel for setting the using mode at cooking or holding, time and temperature adjustment with digital display. Storage of programs and cooking cycles. Heating system with 4 heating elements that can be fully or partially activated. Heating elements housed within a ceramic reflective dish, protected by a glass diffuser. Cooking temperature 230°C, holding temperature from 40°C.



Technical data

Width mm:	750	Internal dim. oven mm:	
Depth mm:	540	Oven capacity:	
Height mm:	500	Oven power kW:	
Weight kg.:	75.00	Qty heating zones:	6 kW
Volume m ³ :	0.33	Plate dim. mm:	1 x GN1/1 + 1/3
Power supply:	VAC400-3N 50/60Hz	Dim. heating zone mm:	
Gas power kW:		Qty tank:	
Electric power kW:	6.00	Tank dim. mm:	
		Tank capacity l:	

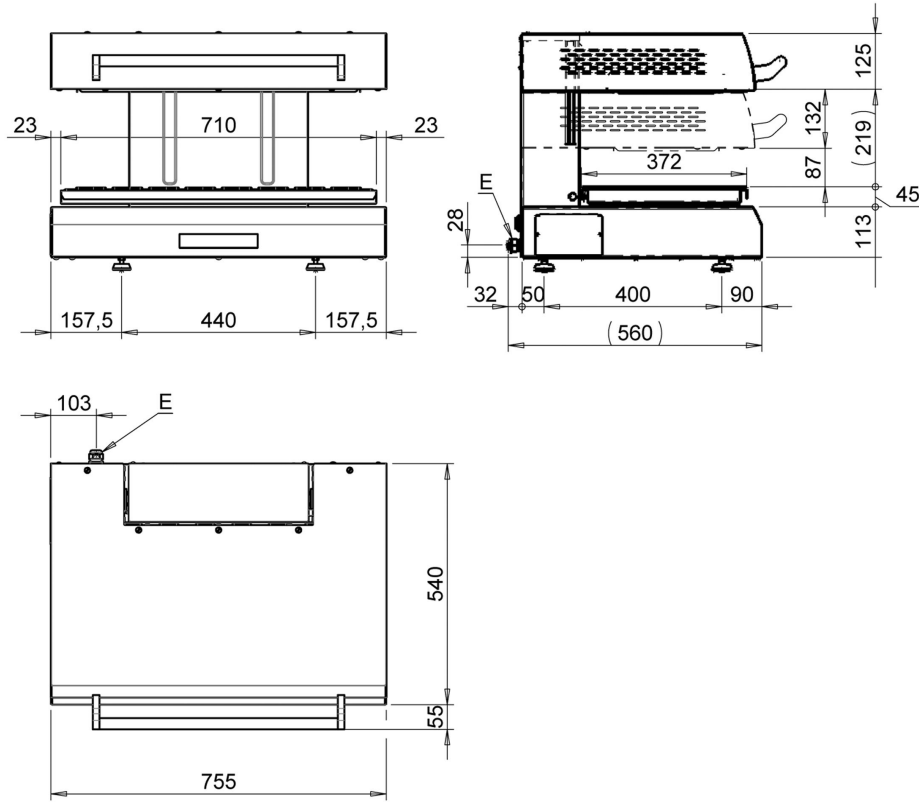
Family
HIGH PERFORMANCE COOKING RANGE

Section
ELECTRIC SALAMANDER

Model
SDSM7E

Code
CR0957139

ELECTRONIC SALAMANDER M70



Legend

(E) Socket 1:

(E) Socket 2:

(G) Gas:

(AD) Softened water:

(AF) Cold water:

(AC) Hot water:

(S) Draining 1:

(S) Draining 2:

(FR) In e out freon:

(V) Steam: