

# &K studio

EST 2024



## TWO NEW UNIQUE SPACES DESIGNED FOR YOUR CULINARY CREATIVE ADVENTURES.

Studio A has a bespoke kitchen with a movable island, it provides the perfect stage for a large range of different usages.

From large-scale culinary productions, collaborative cooking events to team building and workshops. Studio B has a bespoke kitchen to capture the smaller scale set ups. This studio complements the larger space seamlessly, it serves as the ideal add-on used as a prep kitchen or green room.

We also have a large prop selection that offers everything you may need to create your set design. Hand-picked from all over the world, browse our unique range of glassware, colourful crockery, vibrant textiles and styling backgrounds.

These studios are available for video or photography shoots, brand events, exhibitions, creative workshops and more. Our aim is to create a space with as much versatility as possible giving creative teams the freedom and space to bring their vision to life.

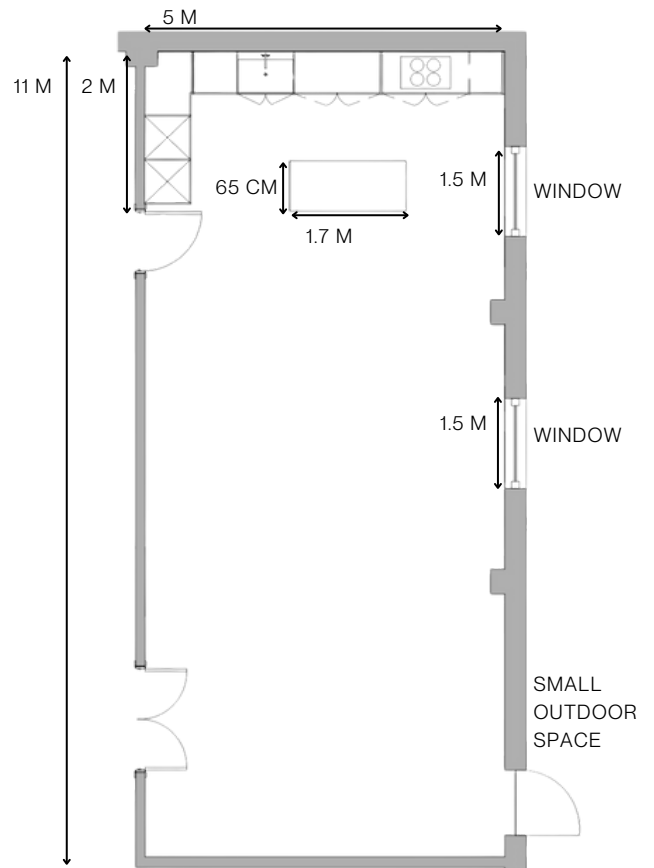
# Studio A

Room Area:  
60 sqm/645 sq ft

Ceiling Height:  
3.4m

Capacity:  
25 people - 1 long table  
12-15 people photography shoot

- Fully fitted kitchen with a large moveable island
- Integrated 70/30 fridge/freezer
- Induction 4 ring hob
- Bosch double oven
- Double butler sink
- Natural light (Two Windows) North Facing
- Industrial dishwasher on site with staff to clean all the dirty dishes as you go
- High speed Wifi
- Prop tables available



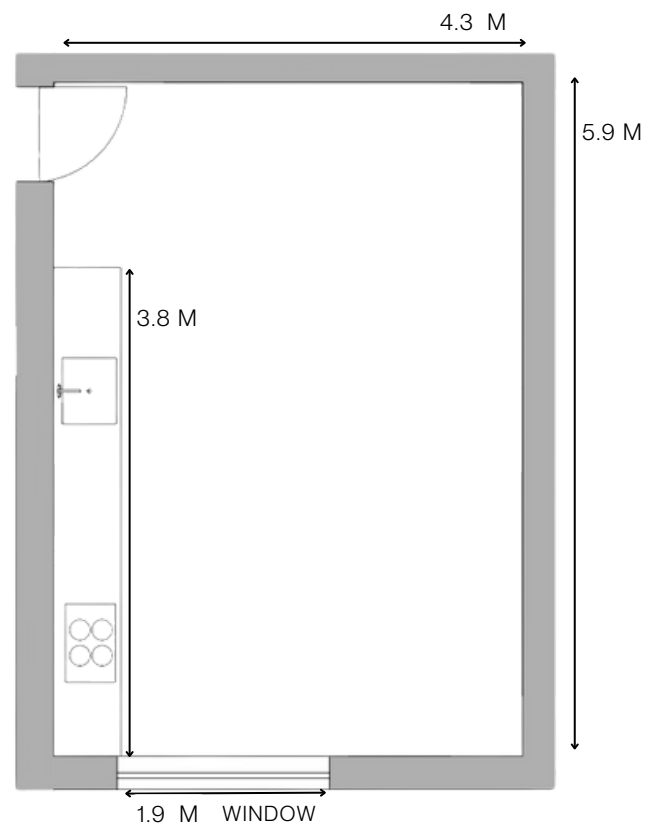
# Studio B

Room Area:  
25 sqm/269sq ft

Ceiling Height:  
2.7m  
Beam ceiling height:  
2.3m

Capacity:  
6-8 people

- Bespoke fully fitted kitchen
- Bosch single oven
- Induction 4 ring hob
- Large commercial fridge
- Microwave
- High speed Wifi
- Prop Shelving



# INFORMATION

## Photography

- 2 x Kino Flo 4 ft 4 Bulbs Daylight Tubes
- 2 x Godox P120L Parabolic Soft-box
- 2 x Godox SL300III Daylight Bowens Mount LED Photography Lighting
- Large Black or White Poly Boards with Stands
- Sandbags
- Selection of photography stands
- Selection of Colourama's 1.35m
- Wireless Microphone



## General

- Garment rail with hangers
- Washing machine & dryer
- Ironing board, iron & steamer
- Full length mirror
- 31" Make up chair
- Make up mirror and light

## Location

Unit 4a Atlas Business Centre  
Oxgate Lane  
NW2 7HJ  
[Google Map](#)



## Supermarkets Nearby

Waitrose & Partners - 1.4 miles 7 min drive  
Lidl - 1.1 Miles 5 Min Drive  
Tesco Superstore - 1.5 miles 7 min drive  
Convenience store - 3 min walk

## Studio Access

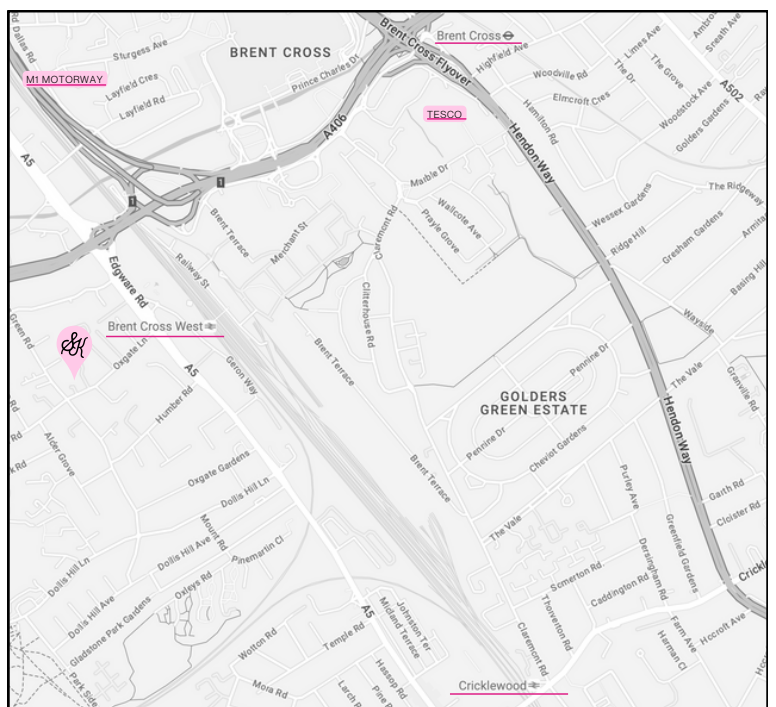
Off street direct loading bay- all one level

## Parking

One parking space included in studio fee  
More available on request

## Catering

TSK can provide if requested  
On site cafe



# RATES

STUDIO A	Day One - £545 Subsequent Days - £500 One Day With Props - £600
----------	---

STUDIO B	Day One - £245 Subsequent days - £200 One Day With Props - £300
----------	---

STUDIO A & B	Day One - £700 Subsequent Days - £670 One Day With Props - £780
--------------	---

## STUDIO WITH PROPS

For one day you get the same great studio, kitchen, equipment, facilities and on top of this £120 worth of props from our collection.

Pre-booked over time is £40ph and overtime is £65ph



## SUPPER CLUBS / EVENTS

£1400

Included:

Studio A & B hire

20 people Tablesetting - crockery, cutlery & glassware

Long table with brentwood chairs

Additional charge for wait staff

DISCOUNTS ARE AVAILABLE FOR WEEKLY OR REGULAR BOOKINGS  
PLEASE EMAIL TO DISCUSS

**All prices quoted are subject to VAT**

