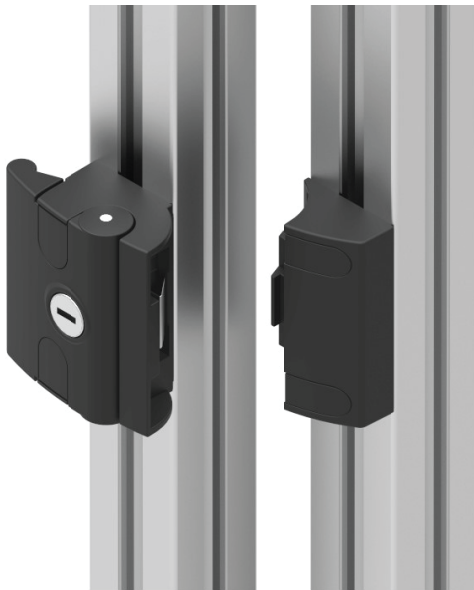




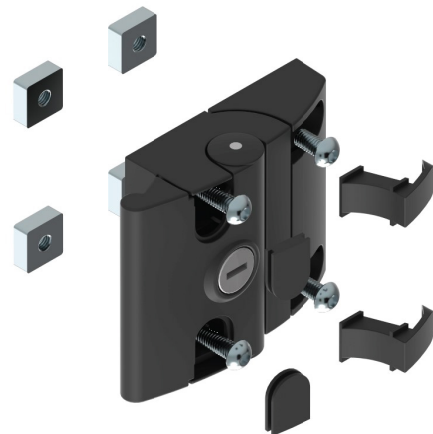
LOCKABLE SLAM LATCH FOR 40 SERIES PROFILES

The AME System **Lockable Slam Latch** is an ideal choice for securing hinged doors in industrial settings. Designed for versatile left or right-hand installation, it is perfect for machine enclosures, fencing, or cabinet doors.

This robust latch is specifically engineered for T-slot profile doors, offering a secure and reliable solution. Its lockable design, combined with a spring-loaded latch mechanism, ensures dependable closure and enhanced security. Made from durable die-cast black material, it is perfect for workstations, machinery enclosures, and equipment cabinets, providing long-lasting performance in demanding industrial environments.



Material: Zinc die-cast
Finish: Black powder coated
Key and bolt covers included



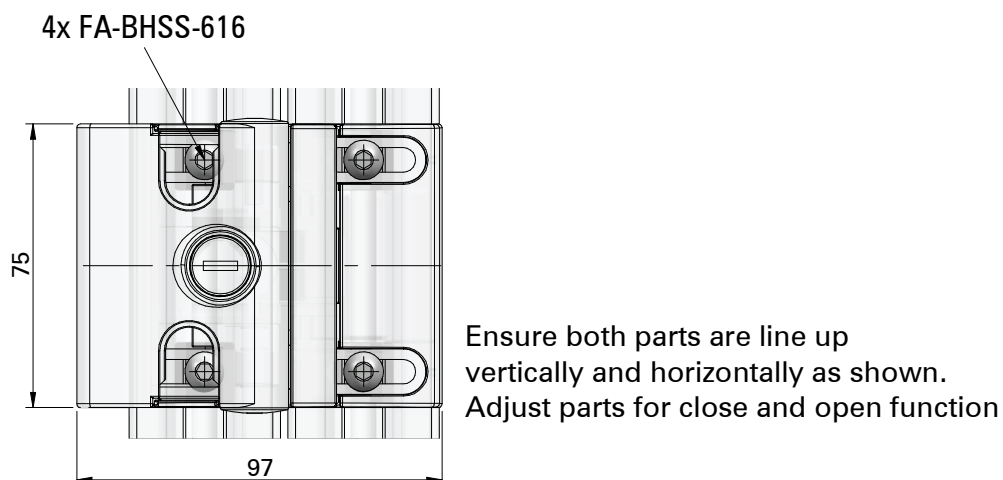
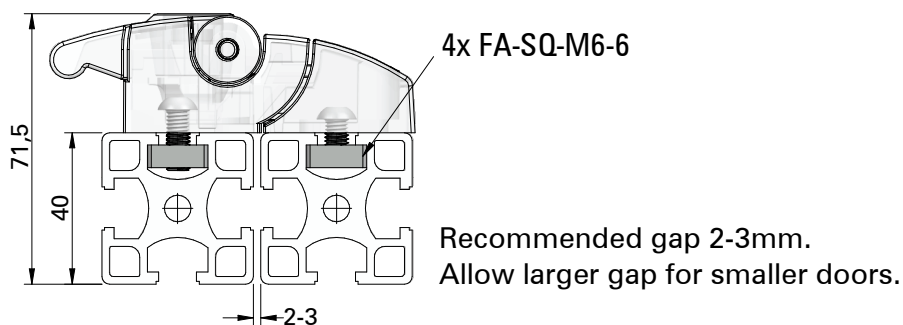


LOCKABLE SLAM LATCH FOR 40 SERIES PROFILES



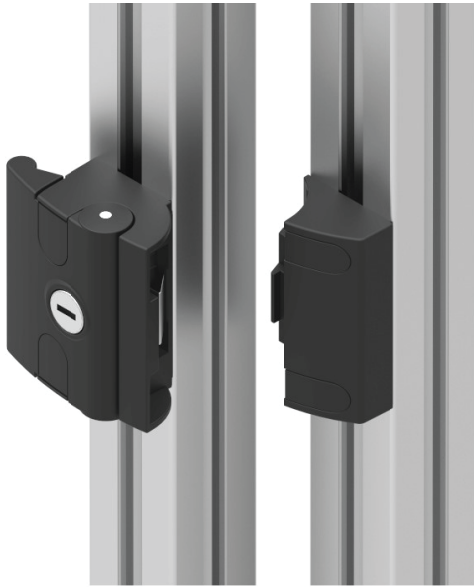
SKU: LL-SLAM

Material: Zinc die-cast
Finish: Black powder coated
Key and bolt covers included





LOCKABLE SLAM LATCH FOR 40 SERIES PROFILES



SKU: LL-SLAM-BUN

- 1x LL-SLAM
- 4x FA-BHSS-616
- 4x FA-SQ-M6-6

