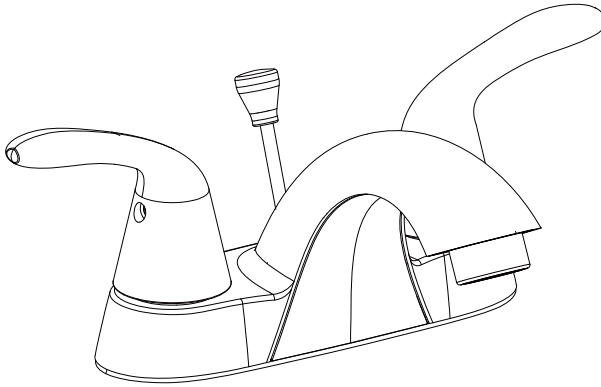




ALLORAUSA
INSTALLATION GUIDE



Dual Handle 4" Centerset Bathroom Faucet
B-4001

TOOLS YOU WILL NEED



Adjustable Wrench



Pipe Tape



Phillips Screwdriver



Silicone Sealant

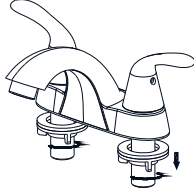
INSTALLATION TIPS

- Allora USA suggests using a locally licensed plumber for installation.
- Check if all the parts are present before beginning the installation.
- Cover your drain during the installation to avoid losing parts.

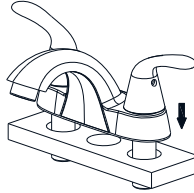
① Turn water off.



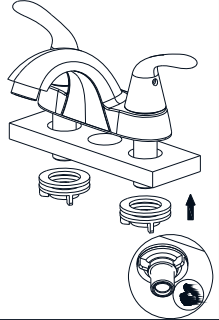
② Remove locking nuts (5).



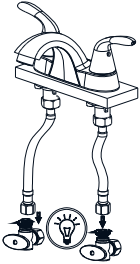
③ Insert faucet through holes.



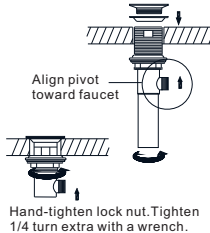
④ Reattach locking nuts (5). Tighten firmly by hand. Tighten an extra 1/4 turn.



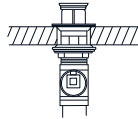
⑤ Connect hot & cold hoses to supply valves, tighten with adjustable wrench.



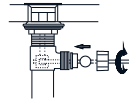
⑥ Remove stopper(15) and flange(14). Add a ring of silicone around underside of flange. Insert drain from underneath sink and tighten.



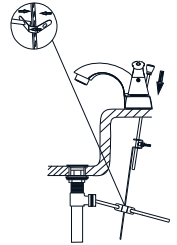
⑦ Align stopper(15) opening with pivot nut(11).



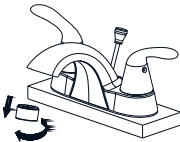
Remove pivot nut(11). Keep gasket in place and insert control rod(9) through stopper(15). Hand tighten pivot nut(11).



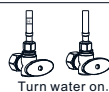
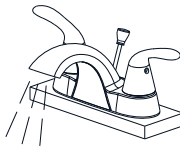
⑧ Insert one side of clip(10) on control rod(9). Insert control rod through strap(8) and then insert the other side of clip on rod(9).



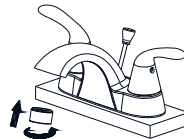
⑨A Remove aerator(4) from faucet.



⑨B Turn supply valves on. Flush water through faucet to clear any debris.



⑨C Reattach aerator(4) to faucet.



TROUBLESHOOTING

If you've followed the instructions carefully and your faucet still does not work properly, take these corrective steps.

PROBLEM	CAUSE	ACTION
Leaks underneath handle.	Retainer nut has come loose. O-ring is dirty or damaged.	Tighten the retainer nut. Clean or replace O-ring. If necessary, replace cartridge.
Aerator leaks or has an inconsistent water flow pattern.	Aerator is dirty or misfitted.	Unscrew aerator, remove any debris, check seating of rubber seal then re-assemble aerator. If necessary, replace aerator.

Need help? For technical assistance or replacement parts, please contact Allora USA Customer Service and one of our representatives will be happy to assist you:

Call 571-291-3484 or email Customerservice@allorausea.com

CARE & MAINTENANCE

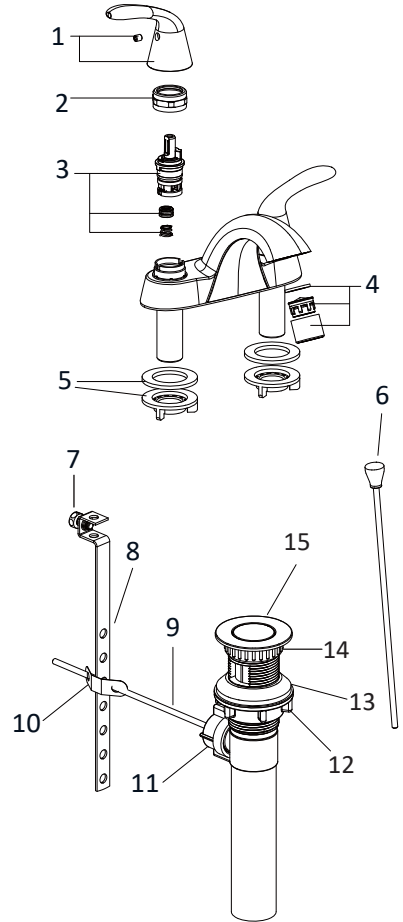
To keep the product clean & shining, follow the steps below:

1. Rinse with clean water & dry with a soft cloth
 2. Do not clean with soaps, acid, polish, abrasives or harsh cleaners
 3. Do not use cloth with a coarse surface
 4. Unscrew the aerator and clean when necessary
-



This product is engineered to meet the EPA WaterSense flow requirement. The flow rate is governed by the flow controller. If replacement is ever required, be sure to replace it with a WaterSense compliant flow controller to retain the water conserving flow rate of this product.

No.	Description	Part No.
1	Metal Handle	
2	Lock Nut	
3	Cartridge	AL1-07
4	Aerator	AL4-09
5	Locking Nuts	
6	Lift Rod	
7	Screw	
8	Strap	
9	Control Rod	
10	Spring Clip	
11	Pivot Nut	
12	Drain Lock Nut	
13	Washer Set	
14	Flange	
15	Stopper	AL5-02



Register Your Allora USA Product

<http://www.alloraus.com/registration>

Activate Your Warranty

Access Premium Customer Support

Get Product Information



REGISTER TODAY