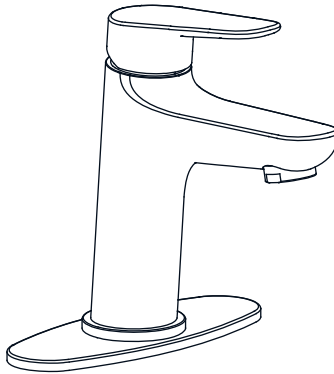




**ALLORAUSA**  
INSTALLATION GUIDE



## Single Handle Bathroom Faucet A-7001

### TOOLS YOU WILL NEED



Adjustable Wrench



Pipe Tape



Phillips Screwdriver

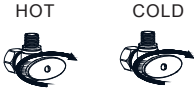


Silicone Sealant

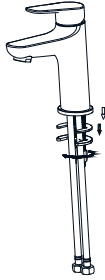
## INSTALLATION TIPS

- Allora USA suggests using a locally licensed plumber for installation.
- Check if all the parts are present before beginning the installation.
- Cover your drain during the installation to avoid losing parts.

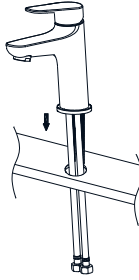
① Turn water off.



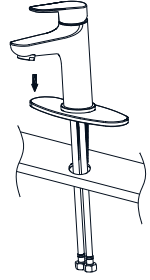
② Remove locking nut(8).



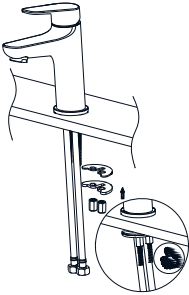
3A For single hole installation, insert faucet through hole.



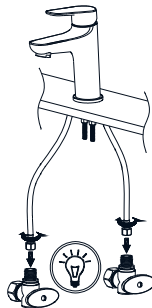
3B For deckplate in installation, insert faucet into deckplate (7), then through hole.



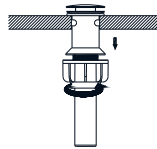
④ Reattach locking nut (8). Tighten with wrench.



⑤ Connect hot & cold hoses to supply valves, tighten with adjustable wrench.



⑥ Remove lock nut (12) and flange (11). Add a ring of silicone around underside of washer. Insert drain from top of sink. Push flange (11) up base of drain.

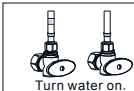


Hand-tighten lock nut. Tighten 1/4 turn extra with a wrench.

7A Remove aerator (5) from faucet.



7B Turn supply valves on. Flush water through faucet to clear any debris.



7C Reattach aerator (5) to faucet.



## TROUBLESHOOTING

If you've followed the instructions carefully and your faucet still does not work properly, take these corrective steps.

PROBLEM	CAUSE	ACTION
Leaks underneath handle.	Retainer nut has come loose. O-ring is dirty or damaged.	Tighten the retainer nut. Clean or replace O-ring. If necessary, replace cartridge.
Aerator leaks or has an inconsistent water flow pattern.	Aerator is dirty or misfitted.	Unscrew aerator, remove any debris, check seating of rubber seal then re-assemble aerator. If necessary, replace aerator.

**Need help?** For technical assistance or replacement parts, please contact Allora USA Customer Service and one of our representatives will be happy to assist you:

Call 571-291-3484 or email [Customerservice@allorausea.com](mailto:Customerservice@allorausea.com)

---

## CARE & MAINTENANCE

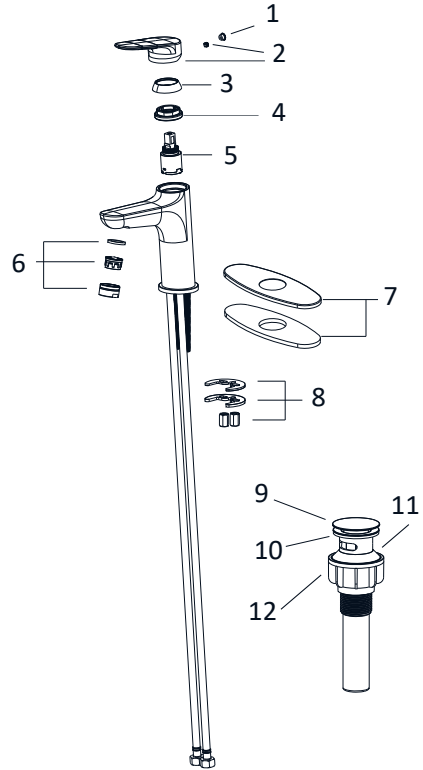
To keep the product clean & shining, follow the steps below:

1. Rinse with clean water & dry with a soft cloth
2. Do not clean with soaps, acid, polish, abrasives or harsh cleaners
3. Do not use cloth with a coarse surface
4. Unscrew the aerator and clean when necessary



**This product is engineered to meet the EPA WaterSense flow requirement.** The flow rate is governed by the flow controller. If replacement is ever required, be sure to replace it with a WaterSense compliant flow controller to retain the water conserving flow rate of this product.

No.	Description	Part No.
1	Hot/Cold Indicator	AL4-10
2	Metal Handle	
3	Trim Cap	
4	Lock Nut	
5	Ceramic Disc Cartridge (25mm)	AL1-04
6	Aerator	AL4-09
7	Deck Plate (Optional)	
8	Locking Nut	
9	Stopper	AL5-01
10	Washer	
11	Flange	
12	Drain Lock Nut	



## IMPORTANT

### Register Your Allora USA Product

<http://www.allorausacom/registration>

**Activate Your Warranty**

**Access Premium Customer Support**

**Get Product Information**



**REGISTER TODAY**