

# FITZPATRICK SKIN TYPES & Pigment Choice Chart



## FITZPATRICK SKIN TYPE 1

Fair skin with freckles, red/ginger or blonde eyelashes, brows and hair.

Pigments for Lips  
Ginger, Nude, Lollipop, Cranberry, Warm Caramel, Brownie Pink  
and all possible color combos with them

Colors for Brows  
Blonde hair: Rubia, Hazelnut, Native  
Ginger hair: Native, Hazelnut



## FITZPATRICK SKIN TYPE 4

Olive or tan brown skin tones. Hazel, brown and dark brown eyes.  
Dark brown hair.

Pigments for Lips  
Dark Strawberry, Cranberry, Marshmallow, Cherry Blossom,  
Raspberry, Lollipop

Colors for Brows  
for lighter skin/hair: Morena  
for darker brown skin tones/hair: Morena + Rubia, Morena, Cafe + Rubia.  
(or just a couple drops of yellow corrector)



## FITZPATRICK SKIN TYPE 2

Pale, fair skin tone. Blue or grey eyes, light or dark blonde hair.

Pigments for Lips  
Brownie Pink, Lollipop, Ginger, Marshmallow, Nude, Cherry Blossom,  
Cranberry, Raspberry, Warm Caramel

Colors for Brows  
warm toned hair: Native, Hazelnut, Coco  
neutral toned hair: Hazelnut, Coco, Rubia  
ashy hair: Rubia, Coco



## FITZPATRICK SKIN TYPE 5

Tan to dark brown skin tones. Dark brown to black eye and hair colors.

Pigment for Lips  
Cranberry, Cherry Blossom, Marshmallow, Lollipop, Raspberry

Colors for Brows  
for lighter skin/hair colors: Morena  
for darker skin/hair colors: Morena, Morena + Rubia, Morena + Native, Cafe

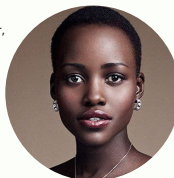


## FITZPATRICK SKIN TYPE 3

From fair to more tan, with yellow/golden undertones. Warm brown hair,  
dark blonde hair. Grey, green or brown eyes.

Pigments for Lips  
Cranberry, Brownie Pink, Warm Caramel, Nude, Cherry Blossom,  
Dark Strawberry, Raspberry, Lollipop, Marshmallow

Colors for Brows  
cool toned hair: Morena, Hazelnut, Coco  
warm toned hair: Morena, Native



## FITZPATRICK SKIN TYPE 6

Very dark skin, that naturally has big amount of pigment. Black eyes and hair  
color.

Pigments for Lips  
Lips are always cool & dark: if the case is workable, need to neutralize  
darkness as a first step, by using cherry blossom & cranberry.  
If darkness is covered after a couple of passes during the first session - use  
Cranberry, Cherry Blossom, Marshmallow, Raspberry

Colors for Brows  
Morena + Native, Morena + Rubia, Morena + Yellow corrector, Cafe + Morena

THE FASTEST COLOR  
DECISION TO YOU,  
FELLOW COSMETIC  
TATTOO ARTIST

*Anna Bokhan*

