

Core Counter Flex

Assembly Instructions

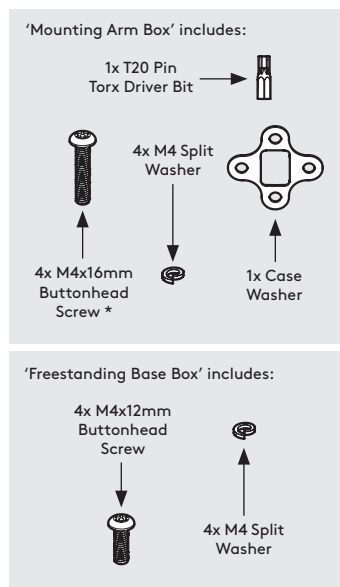
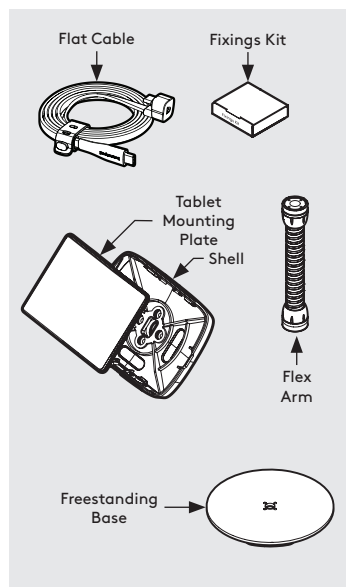
Tools Required:

- Socket Driver

Sheet Code: BP-IM-088_REV2

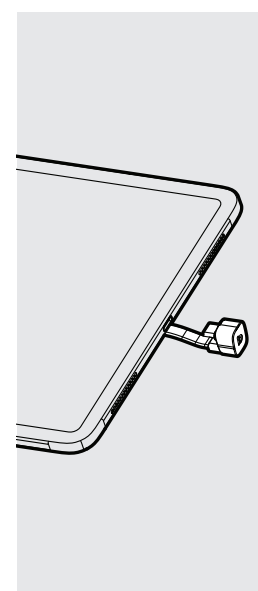
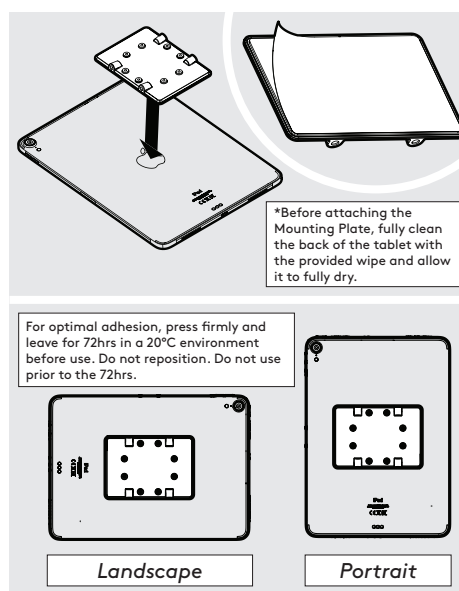
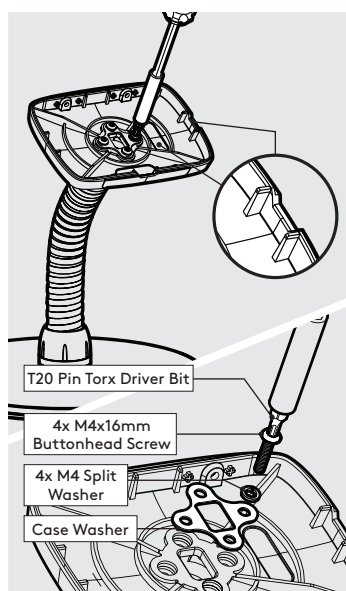
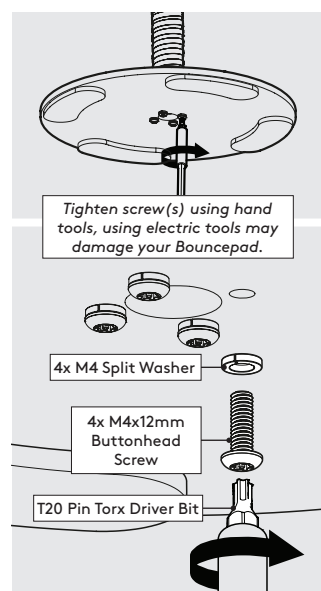
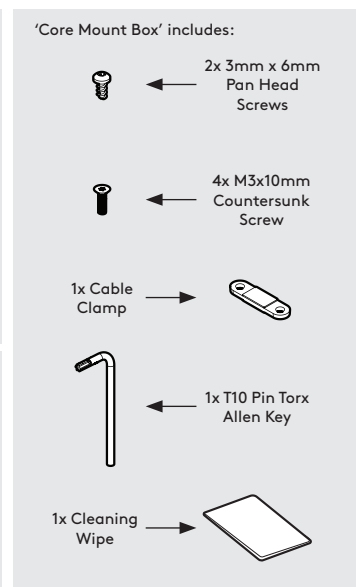
Release Date: 16/05/2025

Copyright 2025 SpotSpot Ltd. (T/A Bouncepad) all rights reserved. Confidential, no part of this publication may be reproduced or transmitted in any form without the written permission of the copyright holder.

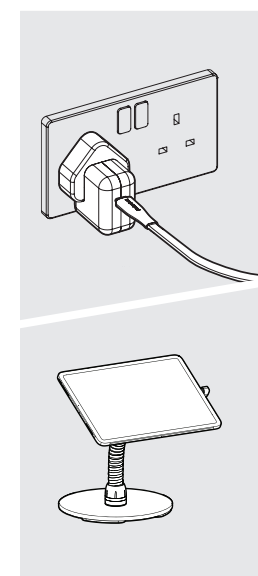
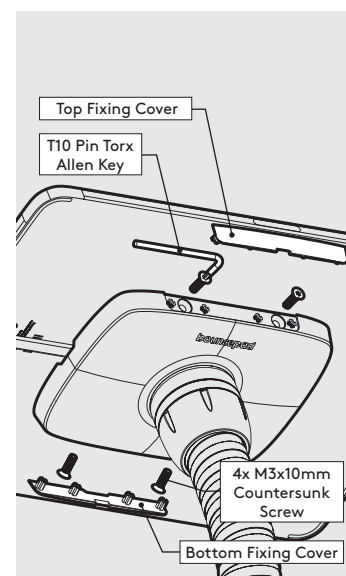
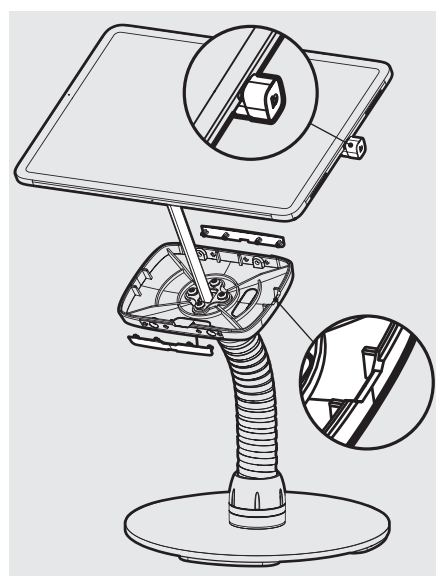
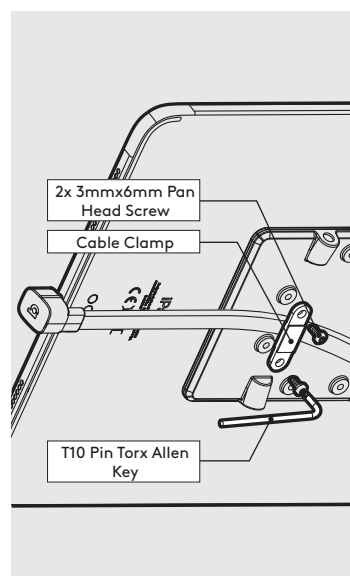


Fixings List

Due to the modular nature of our product range you may receive additional fixings in the fixings kit. * Previous models may have been supplied with 20mm.



- 1 Locate & secure the Flex to the Freestanding Base.
- 2 Locate & attach the Shell to the Flex in the correct orientation.
- 3 Remove the Mounting Plate adhesive backing. Attach level & centrally to the Tablet back as shown.
- 4 Attach the Flat Cable to the Tablet with the U-Bend Head.



- 5 Secure the Flat Cable to the Mounting Plate with the Cable Clamp as shown.
- 6 Remove the Fixing Covers. Feed the Flat Cable into the assembly & locate the Tablet in the chosen orientation.
- 7 Secure the Tablet to the Shell & attach the Fixing Covers as shown.
- 8 Connect Tablet to power & installation is now complete.