

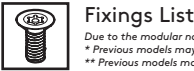
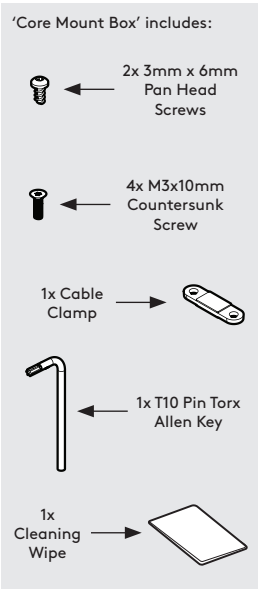
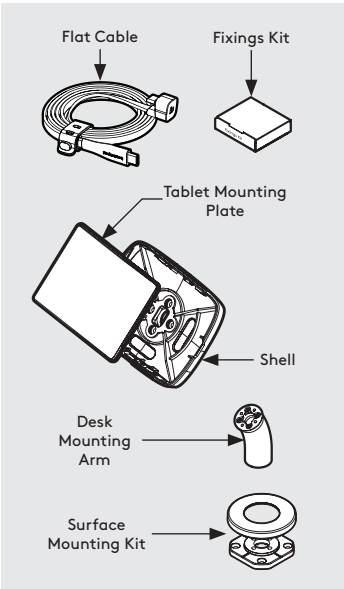
Core Desk  
Assembly Instructions

Tools Required:

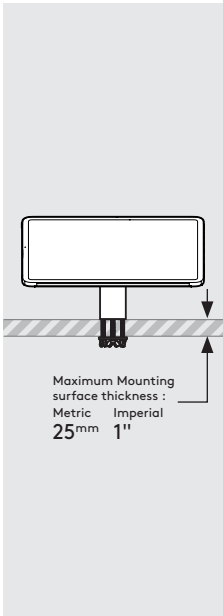
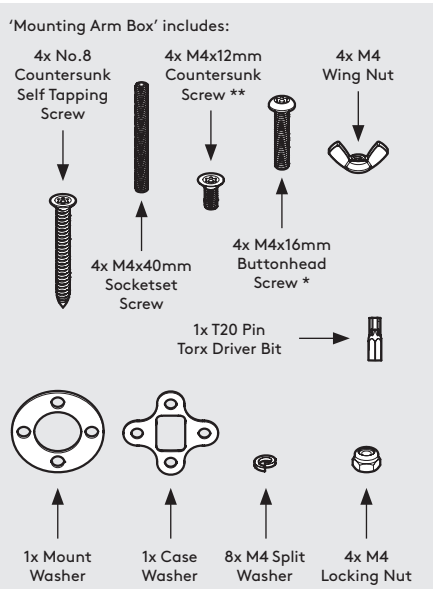
- Pencil
- Electric Drill
- 7mm Spanner *\*or adjustable spanner*
- 5.0mm Drillbit *\*if fixing from below*
- 2.5mm Drillbit *\*if fixing from above*
- 16mm Holesaw *\*if routing the tablet cable through your mounting surface*
- Socket Driver

Sheet Code: BP-IM-079\_REV4  
Release Date: 15/05/2025

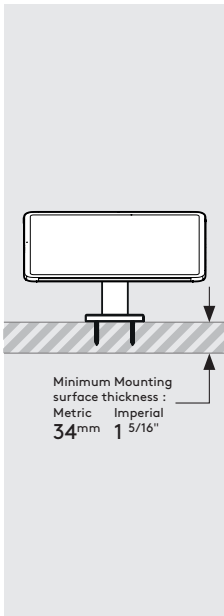
Copyright 2025 SpotSpot Ltd. (T/A Bouncepad) all rights reserved. Confidential, no part of this publication may be reproduced or transmitted in any form without the written permission of the copyright holder.



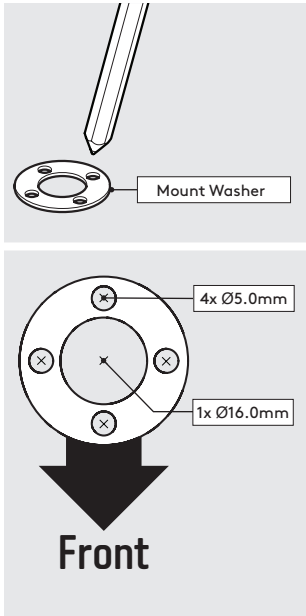
**Fixings List**  
Due to the modular nature of our product range you may receive additional fixings in the fixings kit.  
\* Previous models may have been supplied with 20mm.  
\*\* Previous models may have been supplied with 10mm.



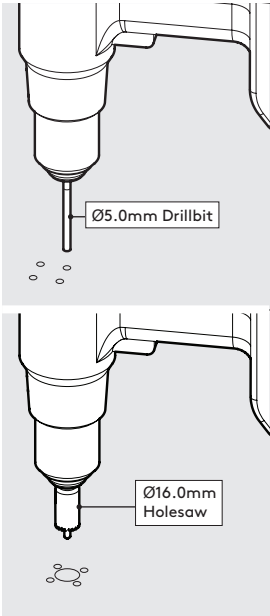
**A** Follow steps A if "Fixing from below".



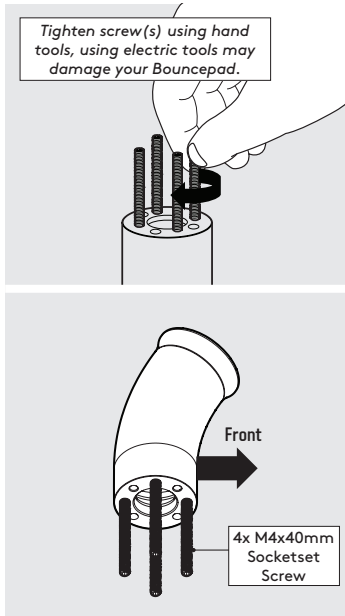
**B** Follow steps B if "Fixing from Above".



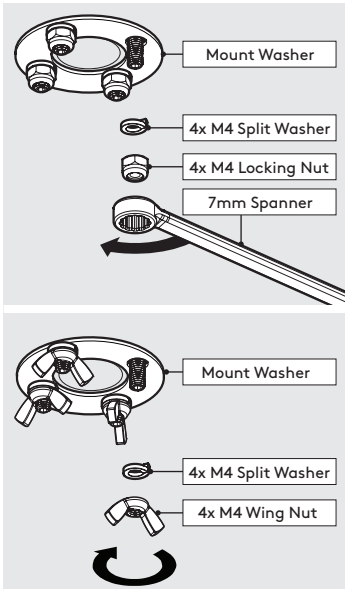
**A1** Using the Mount Washer, mark the drill hole locations.



**A2** Drill each hole - using the specified drill size.



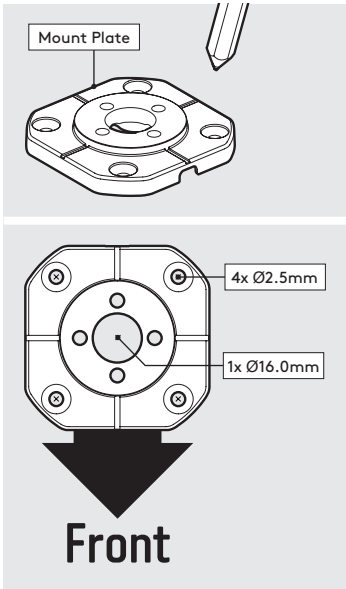
**A3** Locate & screw the Socket Screws into the Desk as shown



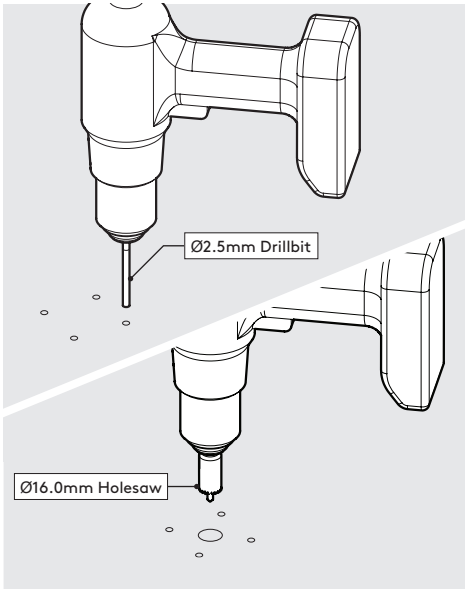
**A4** Secure the Desk to the surface. Locking Nuts offer higher security.



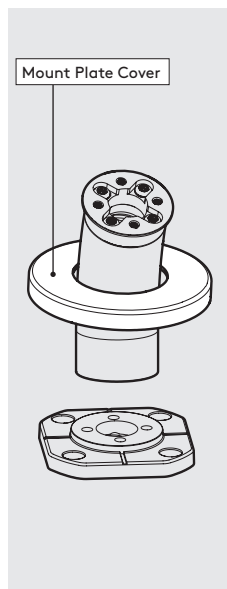
**A5** Go to step 1.



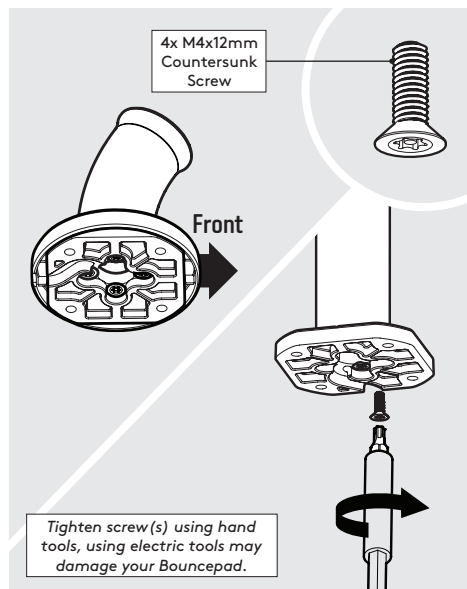
**B1** Using the Mount Plate, mark the drill hole locations as shown.



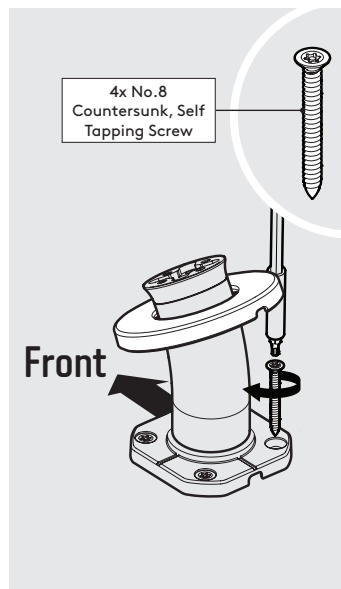
**B2** Drill each hole - using the specified drill sizes.



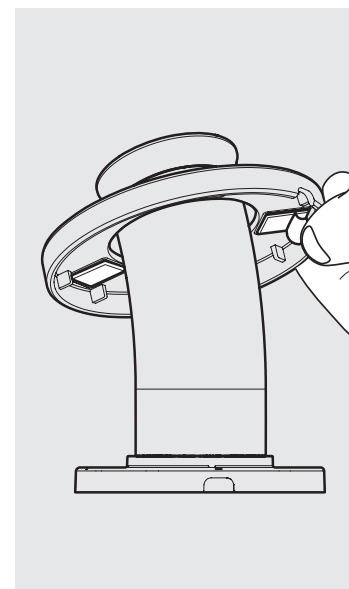
**B3** Locate the Cover onto the Desk.



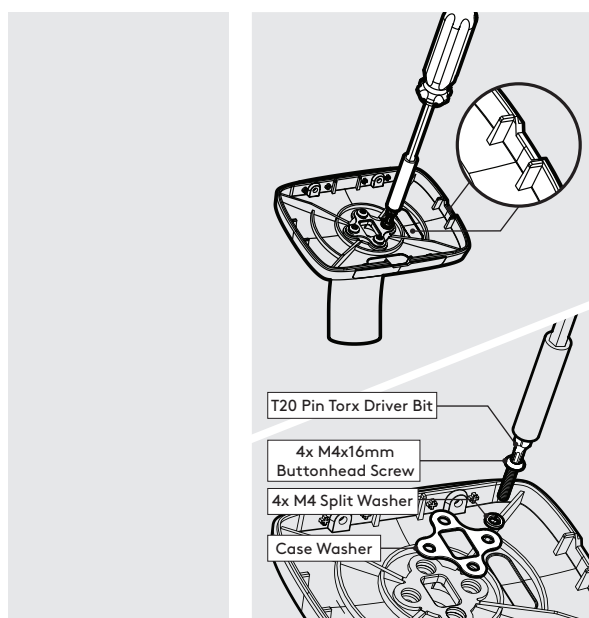
**B4** Join the Desk & Mount Plate in the orientation shown.



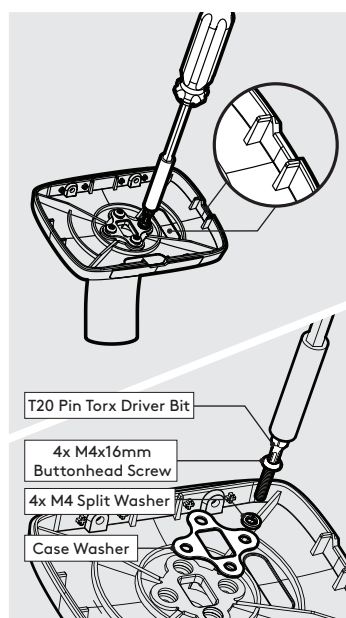
**B5** Secure the Desk to the surface with the 4x Countersunk Fixings.



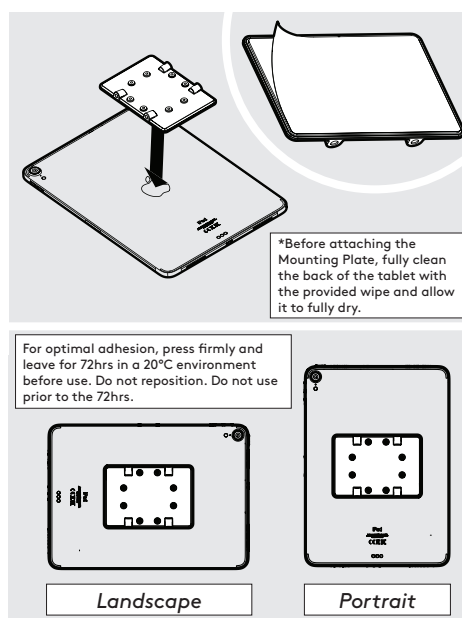
**B6** Adhere the Mount Cover onto the Mount Plate with the adhesive tabs.



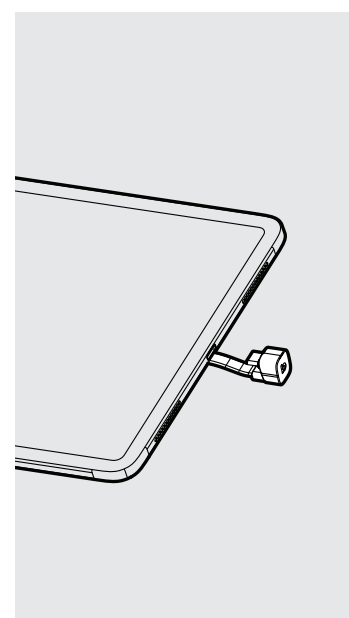
**B7** Go to step 1.



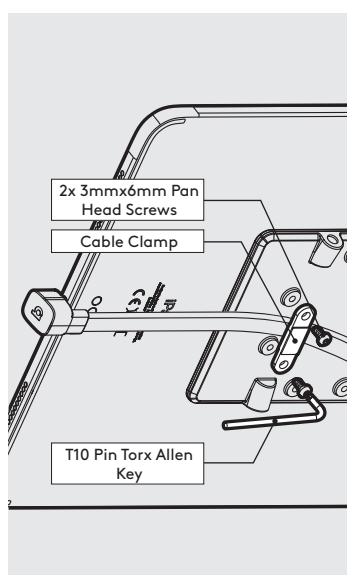
**1** Locate & attach the Shell to the Desk in the correct orientation.



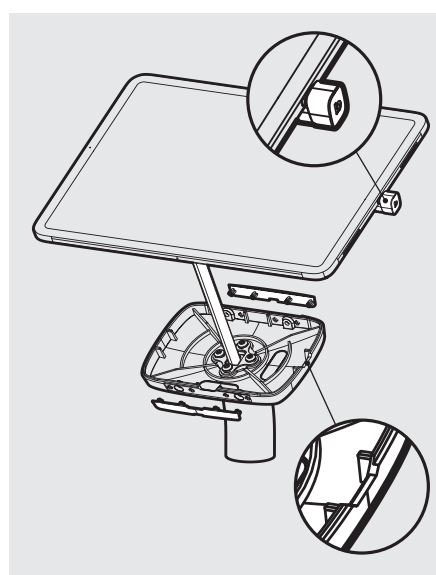
**2** Remove the Mounting Plate adhesive backing. Attach level & centrally to the Tablet back as shown.



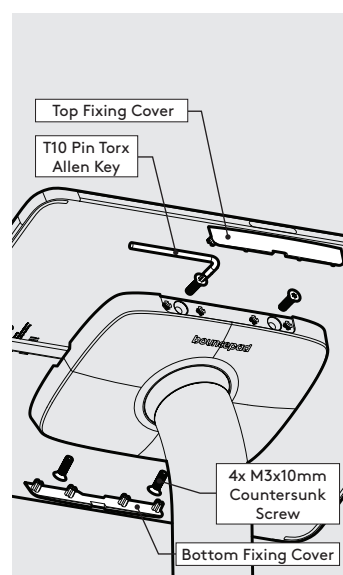
**3** Attach the Flat Cable to the Tablet with the U-Bend Head.



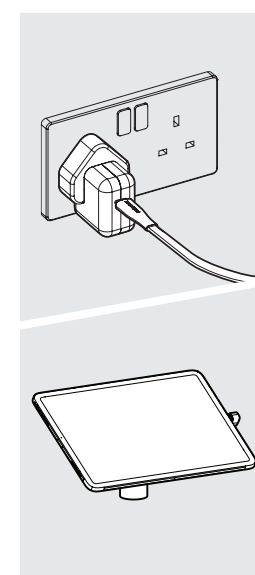
**4** Secure the Flat Cable to the Mounting Plate with the Cable Clamp as shown.



**5** Remove the Fixing Covers. Feed the Flat Cable into the assembly & locate the Tablet in the chosen orientation.



**6** Secure the Tablet to the Shell & attach the Fixing Covers as shown.



**7** Connect Tablet to power & installation is now complete.