

# Cuisinart®

## 2021



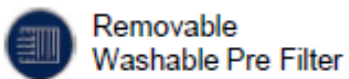
### H13 HIGH-GRADE HEPA FILTER

CAPTURES UP TO **99.9%**  
OF AIRBORNE PARTICLES  
**0.1 MICRON** or larger including bacteria  
and various contaminants



## Countertop Air Purifier

- **H13 High-Grade HEPA Filter (2)**
- (2) Active carbon filters for superior odor removal
- (2) Washable, removable metal pre-filters
- **Dual Sided Filter System**
- **2,500 hour runtime rated filter system**
- 250 CADR Rating (Clean Air Delivery Rate)
- **500 Sq. Ft.** of room coverage (2 air changes per hour)
- Illuminated Touch Controls
- Energy Star Approved
- Quiet & Powerful Brushless DC Brushless Motor
- 12 Hour Timer Mode & 3 Speed Settings
- Filter Replacement Indicator
- Child Safety Lock included
- Sleep Mode / Night Light
- Limited 3-Year Warranty



Removable  
Washable Pre Filter



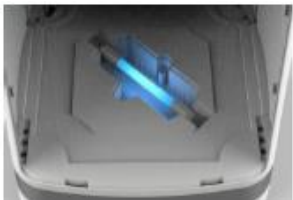
Active  
Carbon Filter

MODEL: CAP-500C

### H13 HIGH-GRADE HEPA FILTER

CAPTURES UP TO **99.9%**  
OF AIRBORNE PARTICLES

**0.1 MICRON** or larger including bacteria  
and various contaminants



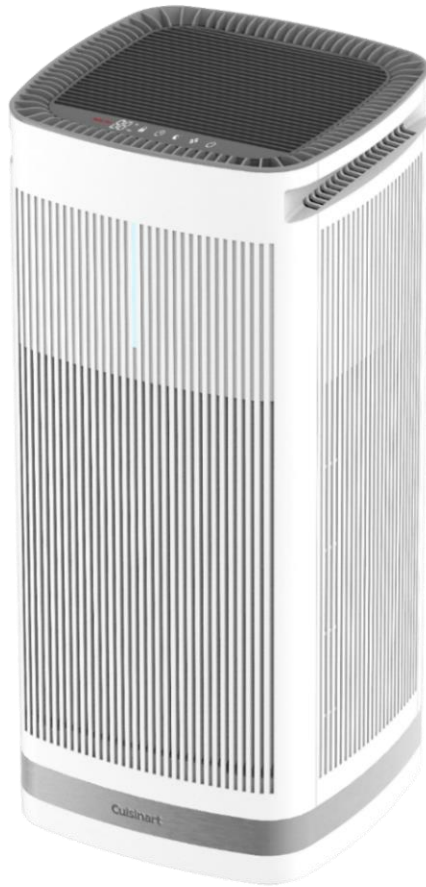
UV-C Light Tube



Removable  
Washable Pre Filter



Active  
Carbon Filter



## Free Standing Air Purifier

- **H13 High-Grade HEPA Filter (4)**
- (4) Active carbon filters for superior odor removal
- (4) Washable, removable metal pre-filters
- 4 Sided Filter System
- **UV-C Light Tube** Added Disinfection Protection
- **2,500 hour runtime rated filter system**
- 450 CADR Rating (Clean Air Delivery Rate)
- **1000 Sq. Ft.** of room coverage (2 air changes per hour)
- Illuminated Touch Controls
- Energy Star Approved
- Quiet & Powerful Brushless DC Motor
- 12 Hour Timer Mode & 4 Speed Settings
- Filter Replacement Indicator
- Child Safety Lock included
- Sleep Mode / Night Light
- Limited 3-Year Warranty

MODEL: CAP-1000C

## GENUINE CUISINART® PURX IUM™ REPLACEMENT FILTERS



MODEL: CAP-500FPKC

- H13 High-Grade HEPA Filter/Active Carbon Filter
- Captures up to **99.9%** of airborne particles **0.1 Micron** or larger including bacteria and various contaminants
- **ACTIVE CARBON FILTER** - Captures unwanted cooking odors, smoke, VOCs and more
- **2,500-HOUR RUNTIME** - Filters last up to 6 months, and last 3 months when purifier operates 24/7
- **ALL-DAY AIR PURIFIER** - Cuisinart Purxium™ filters purify up to 500 sq. ft.\*twice every hour for always-fresh, odor-free air



MODEL: CAP-1000FPKC

## GENUINE CUISINART® PURXIUM™ REPLACEMENT FILTERS

- Contains 4-Sided, Folding Combination
- H13 High-Grade HEPA Filter/Active Carbon Filter
- Captures up to **99.9%** of airborne particles **0.1 Micron** or larger including bacteria and various contaminants
- **ACTIVE CARBON FILTER** - Captures unwanted cooking odors, smoke, VOCs and more
- **2,500-HOUR RUNTIME** - Filters last up to 6 months, and last 3 months when purifier operates 24/7
- **ALL-DAY AIR PURIFIER** - Cuisinart Purxium™ filters purify up to 1,000 sq. ft.\*twice every hour for always-fresh, odor-free air



KITCHEN ELECTRICS

# BLENDERS

Cuisinart®



# Cuisinart®



## Velocity Blender

- 600-watt motor with overload protection
- 48-ounce (1.4 L) capacity bpa-free Tritan™ jar
- Speed control: low, high, pulse, for perfect smoothies
- Premium ultra-sharp stainless steel blade
- Limited 3-year warranty

**MODEL: CBT-600GMEC**

### MASTER CARTON

SIZE: 16.50 x 10.50 x 15.13 in.  
CUBE: 1.52 Ft. WT: 14.62 lbs. Quantity: 2 pcs.

### UNIT DIMENSIONS

SIZE: 8.00 x 9.75 x 14.25 in.  
CUBE: 0.64 Ft. WT: 6.54 lbs.

\*

# Cuisinart®



## Hurricane™ Blender

- Powerful 2.25 peak horsepower motor with overload protection
- 4-prong stainless steel heavy-duty blade assembly
- 60-ounce (1.8 L) capacity BPA-Free Tritan™ jar
- Blendlogix smart technology senses load and adjusts speed for even uninterrupted blending
- Electronic touchpad controls with LCD display and programmable countdown timer
- Limited 3-year warranty

**MODEL: CBT-1500C**

### MASTER CARTON

SIZE: 11.75 x 10.25 x 17.75 in.

CUBE: 1.24 Ft. WT: 11.06 lbs. Quantity: 1 pcs.

### UNIT DIMENSIONS

SIZE: 9.50 x 11.25 x 16.25 in.

CUBE: 1.01 Ft. WT: 9.98 lbs.



# Cuisinart®



## Hurricane™ Pro Blender

- Powerful commercial grade 3.5 peak horsepower motor with overload protection
- 6-prong stainless heavy-duty steel blade assembly
- 64-ounce (1.9 L) capacity BPA-Free Tritan™ jar
- Variable speed control – 1500 to 25000 RPM
- Turbo boost to 30000 RPM
- BlendLogix smart technology senses load and adjusts speed for even uninterrupted blending
- Electronic touchpad controls with LCD display
- Programmable memory control and countdown timer
- 10-year limited motor warranty
- Limited 3-year product warranty

**MODEL: CBT-2000C**

### MASTER CARTON

SIZE: 12.25 x 11.25 x 17.50 in.  
CUBE: 1.40 Ft. WT: 16.24 lbs. Quantity: 1 pcs.

### UNIT DIMENSIONS

SIZE: 10.75 x 11.75 x 16.75 in.  
CUBE: 1.22 Ft. WT: 15.10 lbs.

\*

# Cuisinart®

## Hurricane™ Compact Blender

- 1+ peak horsepower motor with overload protection
- 32 oz. (1 L) capacity BPA-Free Tritan™ jar
- Two 16 oz. (473 ml) travel cups: one single wall, one double wall
- 8 oz. (236 ml) chopper cup
- Four reusable to-go straws
- Limited 3-year warranty

**MODEL: CPB-380C**



### **MASTER CARTON**

SIZE: 21.00 x 12.50 x 10.50 in.

CUBE: 1.60 Ft. WT: 16.90 lbs. Quantity: 2 pcs.

### **UNIT DIMENSIONS**

SIZE: 12.00 x 10.25 x 9.50 in.

CUBE: 0.68 Ft. WT: 7.88 lbs.

# Cuisinart®



## Velocity Ultra™ Compact Blender

- 1 horsepower motor with overload protection
- 56-ounce (1.5 L) capacity bpa-free Tritan™ jar
- Premium ultra-sharp stainless steel blade
- Multiple blending options: high, low, pulse
- Pre-programmed smoothie and ice crush functions
- Electronic touchpad controls with LED indicators
- Limited 3-year warranty

**MODEL: SPB-650C**

### MASTER CARTON

SIZE: 16.75 x 11.25 x 15.75 in.

CUBE: 1.72 Ft. WT: 17.80 lbs. Quantity: 2 pcs.

### UNIT DIMENSIONS

SIZE: 8.25 x 10.25 x 14.50 in.

CUBE: 0.71 Ft. WT: 8.40 lbs.

# Cuisinart®

## 15-pc Compact Portable Blending/Chopping System

- 350-watt motor with overload protection
- 32 oz. (0.9 L) BPA-Free jar
- Four 16 oz. (473ml) travel cups with sipping lids
- High, low, and pulse controls
- Stainless steel front housing
- 8 oz. (236ml) chopping cup
- Limited 3-year warranty

**MODEL: CPB-300C**



### **MASTER CARTON**

SIZE: 21.00 x 16.50 x 10.75 in.  
CUBE: 2.16 Ft. WT: 15.90 lbs. Quantity: 2 pcs.

### **UNIT DIMENSIONS**

SIZE: 10.25 x 16.00 x 10.00 in.  
CUBE: 0.95 Ft. WT: 7.10 lbs.

\*

# Cuisinart®

## SMART STICK® VARIABLE SPEED HANI BLENDER WITH CHOPPER

- 300 Watts - Power to blend smooth and fast
- ★ Variable & Illuminated Speed Controls – Low to High
- Multifunctional accessories included:
  - 2-cup Chopper/grinder
  - Whisk attachment
  - ★ 3-cup Measuring beaker
  - ★ Canvas Storage Pouch
  - ★ Blade Storage Cover
- Easy to Use - Use High or Low speed - slim shaft reaches deep to blend right in pot or pitcher
- Premium Construction - Durable and elegant stainless steel housing and shaft
- Limited 3-Year Warranty

**MODEL: CSB-87C**



Variable & Illuminated Speed Controls

# Cuisinart®

## Smart Stick® Two-Speed Hand Blender

- Two-Speed Slide Control: Fingertip control lets you easily select high or low speed
- **300 Watts of power**
- Comfort Handle: The ergonomic handle allows you to maneuver the hand blender with ease
- 3-cup (24 oz.) mixing cup is use to blend drinks, shakes, salad dressings and more
- Designed for easy gripping and drip-free pouring

**MODEL: CSB-175C**



MBC:10068459192971  
CASE PACK: 2

# Cuisinart® EVOLUTION X™ C O R D L E S S

**SPECIAL OFFER**



Cuisinart®  
**EVOLUTION X™**  
C O R D L E S S

## 5-SPEED HAND MIXER



- Cordless, rechargeable hand mixer
- 5-speed control with digital display
- 7.4 Volts of Lithium Ion Power
- Quick Charge feature
- 20 minutes of continuous run time
- Intelligent battery life blue LED power indicator for level of charge
- Micro USB charging capability (39-inch cord) with charging adaptor
- Limited 3-Year Warranty

CASE PACK: 1

MODEL: RHM-100C



Cuisinart®  
**EVOLUTION X™**  
C O R D L E S S

## HAND BLENDER

- Cordless, rechargeable hand blender
- 7.4 Volts of Lithium Ion Power
- Quick Charge feature
- 20 minutes of continuous run time
- Stainless steel twisted lock blending shaft
- Stick design easily reaches into pots, pitchers & bowls
- • 30oz (800ml) measuring beaker & Chef's Whisk included
- Electronic control with unlock and power button
- Intelligent battery life blue LED power indicator for level of charge
- Micro USB charging capability (39-inch cord) with charging adaptor
- Limited 3-Year Warranty

CASE PACK: 1

MODEL: RHB-100C



**Cuisinart**  
**EVOLUTION X™**  
C O R D L E S S

## 4-CUP CHOPPER



- Cordless rechargeable 4-cup mini chopper
- 7.4V lithium ion batteries with Quick Charge feature
- 20 minute run time per charge
- Chop or grind at the touch of a button
- Stainless steel chopper blade for auto-reversing smart power blade functions
- Micro USB charging capability (39-inch cord) with charging adaptor
- Limited 3-Year Warranty



MODEL: RMC-100C

CASE PACK: 1

**Cuisinart**  
**EVOLUTION X**  
C O R D L E S S

## COMPACT BLENDER

- Cordless, rechargeable blender (reaches 15,000 RPM)
- 7.4 Volts of Lithium Ion Power
- Quick Charge feature
- 20 minutes of continuous run time
- 16oz (500ml) Portable to-go cup with travel lid
- One-touch operation
- Removable blade assembly
- Intelligent battery life blue LED power indicator for level of charge
- Micro USB charging capability (39-inch cord) with charging adaptor
- Limited 3-Year Warranty



MODEL: RPB-100C

CASE PACK: 1

**Cuisinart**  
**EVOLUTION X™**  
C O R D L E S S

## 4-IN-1 WINE CENTER

- Cordless rechargeable 4-in-1 Wine Opener
- 3.7V lithium ion batteries with Quick Charge feature
- 20 minutes of continuous run time
- Includes an automatic bottle opener, automatic wine preserver, removable foil cutter & wine aerator
- Opens up to 50 natural or synthetic corks on a full charge
- Intelligent battery life blue LED power indicator, to indicate the level of charge
- Micro USB charging capability (39-inch cord) with charging adaptor
- Limited 3-Year Warranty



MODEL: RWO-100C

CASE PACK: 1



# Cuisinart® EVOLUTION X™ CORDLESS



A glass of iced coffee with banana slices and a dollop of cream, with a Cuisinart blender in the background.

# BEVERAGE

Cuisinart®

# Cuisinart® **T** SERIES

INTUITIVE TOUCHSCREEN TECHNOLOGY



# Cuisinart® T SERIES

CHANGING THE DYNAMIC OF TODAY'S KITCHEN.

## IDLE / SLEEP MODE

Invisible Control Panel  
that can be activated  
by pressing the Power  
Icon, to display all  
functions and options.



## WAKE / SELECTION MODE

Interactive Controls  
With Reveal Screen  
Technology.





# 14-CUP TOUCHSCREEN COFFEEMAKER

MODEL: DCC-T20C



- Full touchscreen controls
- Hotter Coffee
- Brew Strength Control - Regular or Bold
- Fully Automatic with 24-hour programmability, self-clean, 1-4 cup setting, auto-off (0-4 hours), and optional ready alert tone
- 14-Cup Glass Carafe
- Easy-to-View Water Window
- Brew Pause™ feature
- Gold-Tone Coffee Filter
- Charcoal Water Filter
- Limited 3-Year Warranty

CASE PACK: 2

**Cuisinart®** **T** SERIES

# TOUCHSCREEN BURR MILL COFFEE GRINDER

MODEL: DBM-T10C



- Flat burr in stainless steel material
- Touch buttons: Power on/off, number of cups, manual, grind start/stop
- LCD Display shows number of cups and countdown timer
- 1-14 cup selection
- Bean hopper can hold 8oz light to medium roasted coffee bean, 7oz dark roast coffee bean
- Removable Ground container holds enough ground coffee for 32 cups
- 18-position Grind Selector - from ultra fine to extra course
- Convenient cord storage
- Scoop & cleaning brush included
- Limited 3-Year Warranty

CASE PACK 4

**Cuisinart**  **T SERIES**

# 2-SLICE TOUCHSCREEN TOASTER

MODEL: CPT-T20C



- Full touchpad controls
- 6 shade settings
- Bagel, Single Slice, Defrost and Cancel functions
- QuickView™ feature to check progress during the toasting process
- +30 seconds to add toasting time
- Extra-wide 1 ½" toast slots with high-lift lever
- Removable crumb tray(s)
- Limited 3-Year Warranty

; CASE PACK 4

**Cuisinart**® **T** SERIES

# 4-SLICE TOUCHSCREEN TOASTER

MODEL: CPT-T40C



- Full touchpad controls
- 6 shade settings
- Bagel, Single Slice, Defrost and Cancel functions
- QuickView™ feature to check progress during the toasting process
- +30 seconds to add toasting time
- Extra-wide 1 ½" toast slots with high-lift lever
- Removable crumb tray(s)
- Limited 3-Year Warranty

CASE PACK: 2

**Cuisinart**  **T SERIES**

# Cuisinart®



## Grind & Brew Coffeemaker with Single Serve

First to market  
combination  
coffeemaker

### Carafe:

- Grind & Brew with blade grinding system automatically grinds whole beans before brewing
- Separate 64oz water reservoir
- Fully Automatic with 24-hour programmability, auto-off (0–4 hours), brew strength control, self clean
- Permanent gold tone filter

### Single Serve:

- Brew Sizes: 8 oz., 10 oz. and 12 oz.
- K-cup and HomeBarista compatible (K-Cup holder same as SS-15)
- Separate 40oz water reservoir
- Removable Drip Tray
- Limited 3-year warranty

MODEL: SS-GB1C

CASE PACK: 1

# Cuisinart®

---



## 12-Cup Automatic Coffeemaker

---

- 12 cup carafe with ergonomic handle, drippless spout and knuckle guard
- Fully automatic with 24 hour programmability, self clean and 1 to 4 cup settings
- Easy to Read LCD Clock
- Brew Pause™ feature lets you enjoy a cup of coffee before brewing has finished
- 60 second reset "remembers" where it was in the brewing process and settings
- Gold tone commercial style permanent filter
- Charcoal water filter removes impurities
- Limited 3-year warranty

MODEL: DCC-1120BKC

# Cuisinart®

---

## Automatic Grind & Brew 12-Cup Coffeemaker

---



- Blade grinder automatically grinds whole beans before brewing for fresh ground flavor
- 12-cup glass carafe keeps coffee hot and fresh
- Simple controls for effortless operation
- Fully Automatic with 24-hour programmability, auto-off, 1-4 cup setting, self-clean-Brew Pause™ feature
- Grind-Off Feature Let's you brew pre-ground coffee
- Gold tone commercial style permanent filter
- Charcoal water filter removes impurities
- Limited 3-year warranty

MODEL: DGB-400C

# Cuisinart®

---



## Automatic Grind & Brew 10-Cup Thermal Coffeemaker

---

- Blade grinder automatically grinds whole beans before brewing for fresh ground flavor
- 10-cup double-wall insulated thermal carafe keeps coffee hot and fresh for hours at a time
- Simple controls for effortless operation
- Fully Automatic with 24-hour programmability, auto-off, 1-4 cup setting, self-clean-Brew Pause™ feature
- Grind-Off Feature Let's you brew pre-ground coffee
- Gold tone commercial style permanent filter
- Charcoal water filter removes impurities
- Limited 3-year warranty

MODEL: DGB-450C



# Cuisinart®

## Brew Central Thermal 10-Cup Programmable Coffeemaker



- A Thermal double-wall, insulated brushed stainless carafe keeps up to 10 cups (1.5 L) of coffee hot for hours
- A charcoal water filter helps produce great tasting coffee by removing impurities
- An indicator light signals when it's time to clean your coffeemaker
- The Brew Pause feature lets you pour a cup of coffee before brewing has finished
- 1-4 cup setting allows you to brew only a cup or two without altering the flavor of the brew
- The user-friendly digital clock offers freshly brewed coffee, day or night
- Brewing Complete audible beep
- Gold tone filter

**MODEL: DCC-1400C**

### **MASTER CARTON**

SIZE: 19.75 x 11.25 x 17.00 in.

CUBE: 2.186 Ft. WT: 19.40 lbs. Quantity: 2 pcs.

### **UNIT DIMENSIONS**

SIZE: 9.50 x 10.75 x 16.00 in.

CUBE: 0.946 Ft. WT: 9.00 lbs.

# Cuisinart®



## 4-Cup Coffeemaker with Stainless Steel Carafe

- Perfect size for small kitchens
- Brew Pause™ feature - pour a cup before brew cycle ends
- Machine shuts off automatically after 30 minutes
- Limited 3-year warranty

**MODEL: DCC-450BKC**

### **MASTER CARTON**

SIZE: 14.25 x 10.00 x 12.25 in.

CUBE: 1.01 Ft. WT: 17.00 lbs. Quantity: 4 pcs.

### **UNIT DIMENSIONS**

SIZE: 6.75 x 8.75 x 11.00 in.

CUBE: 0.38 Ft. WT: 4.00 lbs.

\*

# Cuisinart®



## **Brew Central® 12-Cup Programmable Coffeemaker**

- 24-hour programmability, self clean, 1-4 cup setting and auto-shutoff (0-4 hours)
- Adjustable keep warm temperature control
- Brushed metal housing and elegant tech-industrial design
- Brew Pause™ feature - pour a cup before brew cycle ends
- Includes a charcoal water filter and gold tone coffee filter
- Limited 3-year warranty

**MODEL: DCC-1200C**

### **MASTER CARTON**

SIZE: 19.80 x 11.30 x 17.00 in.  
CUBE: 2.20 Ft. WT: 17.90 lbs. Quantity: 2 pcs.

### **UNIT DIMENSIONS**

SIZE: 9.80 x 11.00 x 16.30 in.  
CUBE: 1.02 Ft. WT: 8.40 lbs.

# Cuisinart®

## Coffee Center™ 12-Cup Programmable Coffeemaker and Single-Serve Brewer

### CARAFE BREWER:

- 24-hour programmability, self-clean and auto-shutoff (0-4 hours)
- Brushed stainless steel front housing
- Brew strength control - choose regular or bold for the perfect cup of coffee
- Brew Pause™ feature – pour a cup before brew cycle ends
- Gold-tone coffee filter lets only pure coffee flavour flow through
- Charcoal water filter

### SINGLE-SERVE:

- K-cup pod compatible
- Includes cuisinart's Homebarista™ reusable filter cup which lets you use your own coffee
- Removable 40 oz. (1.1 L) reservoir
- Removable drip tray for travel mugs
- Charcoal water filter
- Limited 3-year warranty

**MODEL: SS-15C**



### MASTER CARTON

SIZE: 24.50 x 13.25 x 17.25 in.  
CUBE: 3.24 Ft. WT: 28.06 lbs. Quantity: 2 pcs.

### UNIT DIMENSIONS

SIZE: 12.75 x 12.00 x 16.75 in.  
CUBE: 1.48 Ft. WT: 12.86 lbs.

\*

# Cuisinart®



## Coffee On Demand™ 12-Cup Programmable Coffeemaker

- 24-hour programmability, self clean, 1-4 cup setting and auto-shutoff (0-4 hours)
- Coffee without the carafe; dispenses from the reservoir, one cup at a time
- Double-walled reservoir keeps up to 12 cups of coffee fresh and hot
- Brushed stainless steel front housing
- Easy to read coffee gauge displays the number of cups remaining
- Limited 3-year warranty

**MODEL: DCC-3000C**

### **MASTER CARTON**

SIZE: 22.50 x 14.25 x 17.25 in.  
CUBE: 3.20 Ft. WT: 22.80 lbs. Quantity: 2 pcs.

### **UNIT DIMENSIONS**

SIZE: 8.75 x 11.28 x 14.75 in.  
CUBE: 0.84 Ft. WT: 10.40 lbs.

# Cuisinart®

## Fully Automatic 12-Cup Burr Grind & Brew™ Coffeemaker



- Fully Automatic With 24-Hour Programmability
- Extra-large LCD display provides a clear view of programming and brew settings
- Vertical burr mill - Grinds beans just before brewing for the freshest flavour
- Auto rinse technology - Automatically self-cleans coffee ground outlet
- Customized flavour strength and grind control
- Sealed bean hopper stores a half-pound (225 g) of beans to be fresh and ready
- Brew Pause™ feature - pour a cup while coffee is still brewing
- Water Level Window
- Limited 3-year warranty

**MODEL: DGB-800C**

### **MASTER CARTON**

SIZE: 18.88 x 13.00 x 18.00 in.

CUBE: 2.56 Ft. WT: 31.00 lbs. Quantity: 2 pcs.

### **UNIT DIMENSIONS**

SIZE: 9.50 x 13.00 x 18.00 in.

CUBE: 1.27 Ft. WT: 15.00 lbs.

# Cuisinart®

## PerfectTemp™ 14-Cup Programmable Coffeemaker



- Hotter Coffee with expert coffee-making technology to ensure hotter coffee temperature without sacrificing flavor or quality
- Brew Strength Control allows you to select Regular or Bold coffee flavour
- Fully Automatic with 24-hour programmability, self-clean, 1-4 cup setting, auto-off (0-4 hours), and optional ready alert tone
- 14-Cup Glass Carafe with decorative stainless steel handle
- Easy-to-View Water Window for accurate filling
- Brew Pause™ feature lets you enjoy a cup of coffee before the brewing cycle has finished
- 60-Second Reset recalls settings and position in the brewing process in case of loss of power
- Gold-Tone Coffee Filter and Charcoal Water Filter

**MODEL: DCC-3200C**

### MASTER CARTON

SIZE: 22.25 x 11.25 x 17.33 in.  
CUBE: 2.51 Ft. WT: 18.62 lbs. Quantity: 2 pcs.

### UNIT DIMENSIONS

SIZE: 10.25 x 11.00 x 16.50 in.  
CUBE: 1.08 Ft. WT: 8.58 lbs.

# Cuisinart®



## Grind & Brew™ Thermal 12-Cup Automatic Coffeemaker

- 24-hour programmability
- Burr grinder automatically grinds beans before brewing
- Brew strength control - choose mild, medium or strong for the perfect cup of coffee
- Adjustable auto shutoff, and grind control from 2-12 cups
- Brushed stainless steel housing
- Double-walled insulated thermal stainless steel carafe
- Brew pause feature – pour a cup before brew cycle ends
- Freshly stores up to a ½ pound (225 g) of beans
- Limited 3-year warranty

**MODEL: DGB-900BCC**

### MASTER CARTON

SIZE: 20.50 x 14.00 x 19.00 in.  
CUBE: 3.16 Ft. WT: 30.10 lbs. Quantity: 2 pcs.

### UNIT DIMENSIONS

SIZE: 13.13 x 10.00 x 18.00 in.  
CUBE: 1.37 Ft. WT: 13.70 lbs.



# Cuisinart®



## Classic Cordless 12-Cup Percolator

- Convenient capacity of 4-12 cups
- Brushed stainless steel housing
- Transparent knob reveals the progress of the brew cycle
- Precision no-drip spout is long, tapered and pours without a spill
- Stay cool bottom sits safely on any surface, without scarring
- Detachable power base and cord wrap lets you remove percolator and return it for re-heating
- Limited 3-year warranty

**MODEL: PER-12BCC**

### MASTER CARTON

SIZE: 13.50 x 8.80 x 13.30 in.  
CUBE: 0.98 Ft. WT: 8.00 lbs. Quantity: 2 pcs.

### UNIT DIMENSIONS

SIZE: 6.50 x 8.30 x 12.50 in.  
CUBE: 0.39 Ft. WT: 3.60 lbs.

# Cuisinart®



## 12-Cup Programmable Coffeemaker with Hot Water System

- 2-in-1: 12-cup coffeemaker and hot water system
- Brushed stainless steel front housing
- Coffeemaker: 24-hour programmability, self clean, 1-4 cup setting and auto-shutoff (0-4 hours)
- Brew Pause™ feature – pour a cup before brew cycle ends
- Hot water on demand for tea, soup, hot cocoa and more
- Limited 3-year warranty

**MODEL: CHW-12C**

### MASTER CARTON

SIZE: 22.75 x 13.50 x 18.00 in.  
CUBE: 3.20 Ft. WT: 22.40 lbs. Quantity: 2 pcs.

### UNIT DIMENSIONS

SIZE: 11.25 x 12.50 x 17.00 in.  
CUBE: 1.38 Ft. WT: 10.00 lbs.

# Cuisinart®

## Premier Coffee Series 12-Cup Replacement Carafe

- Water level markings on side of carafe are easy to see
- Ergonomic handle makes it easy to lift and pour
- Dripless pour spout keeps counters and saucers clean
- Dishwasher safe
- For use with models DCC-1100C series, DCC-1200C series, CHW-12C series

**MODEL: DCC-1200PRCC**



### **MASTER CARTON**

SIZE: 25.80 x 17.00 x 8.30 in.

CUBE: 2.11 Ft. WT: 11.20 lbs. Quantity: 6 pcs.

### **UNIT DIMENSIONS**

SIZE: 8.30 x 8.30 x 7.50 in.

CUBE: 0.30 Ft. WT: 1.60 lbs.

# Cuisinart®



## Replacement Charcoal Water Filters (2 per package)

- For use with Cuisinart Coffeemakers that include a Water Filter Holder
- Charcoal Water Filter eliminates Calcium and Bad Tastes and Odours from Tap Water
- 2 Per Package

**MODEL: DCC-RWFC**

### **MASTER CARTON**

SIZE: 6.00 x 5.30 x 4.30 in.

CUBE: 0.08 Ft. WT: 0.40 lbs. Quantity: 6 pcs.

### **UNIT DIMENSIONS**

SIZE: 1.50 x 2.80 x 3.50 in.

CUBE: 0.01 Ft. WT: 0.07 lbs.

# Cuisinart®



## Gold Tone Coffee Filter

- Fits all Cuisinart 10, 12 and 14-cup cone filter coffeemakers

**MODEL: GTF-1C**

### **MASTER CARTON**

SIZE: 15.75 x 11.00 x 5.25 in.

CUBE: 0.53 Ft. WT: 1.56 lbs. Quantity: 6 pcs.

### **UNIT DIMENSIONS**

SIZE: 5.00 x 5.00 x 4.00 in.

CUBE: 0.06 Ft. WT: 0.16 lbs.

# Cuisinart®



## HomeBarista™ Reusable Filter Cup

- Brew a cup using your favourite ground coffee
- For use with Cuisinart single-serve brewers (models: SS-6C / SS-10C / SS-15C) and most K-cup® style brewers (not including Keurig® 2.0)
- Dishwasher safe
- 15 grams (2½ tablespoons)

**MODEL: SS-RFCC**

### MASTER CARTON

SIZE: 9.00 x 6.00 x 3.75 in.  
CUBE: 0.12 Ft. WT: 0.82 lbs. Quantity: 6 pcs.

### UNIT DIMENSIONS

SIZE: 2.88 x 2.88 x 3.50 in.  
CUBE: 0.02 Ft. WT: 0.12 lbs.

# Cuisinart®



## Premium Single-Serve Coffeemaker

- Brews in less than a minute
- 5 serving sizes and temperature control
- Homebarista™ reusable filter cup
- Hot water & rinse buttons
- Removable 72 oz. (2.1 L) water reservoir
- Programmable display
- Limited 3-year warranty

**MODEL: SS-10C**

### MASTER CARTON

SIZE: 14.75 x 12.25 x 14.25 in.  
CUBE: 1.49 Ft. WT: 20.86 lbs. Quantity: 2 pcs.

### UNIT DIMENSIONS

SIZE: 11.25 x 14.00 x 13.25 in.  
CUBE: 1.21 Ft. WT: 9.66 lbs.

# Cuisinart®



## Espresso Maker

- 15 bars of pressure with thermo-block heating mechanism
- 53-ounce removable reservoir
- Brews one or two cups - ground espresso or pod
- Stainless Steel steam nozzle for cappuccino and latte
- Warming tray on top
- Porta-filter holder with locking mechanism that makes it easier to pump out wet grounds after use
- Removable drip tray and cover for easy clean-up
- Includes: Tamping tool with measuring spoon and stainless frothing cup

**MODEL: EM-100NC**

### **MASTER CARTON**

SIZE: 26.50 x 10.50 x 15.75 in.

CUBE: 2.536 Ft. WT: 32.20 lbs. Quantity: 2 pcs.

### **UNIT DIMENSIONS**

SIZE: 9.75 x 12.75 x 15.00 in.

CUBE: 1.079 Ft. WT: 16.10 lbs.



# Cuisinart®



## Programmable Conical Burr Mill

- Conical stainless steel burr grinds beans for optimal flavour
- 18 grind settings from coarse for french press to ultra-fine for espresso
- Grinds beans for 1 to 14 cups
- Countdown timer with automatic shutoff
- Brushed stainless steel housing
- LCD displays countdown and settings
- Limited 3-year warranty

**MODEL: CBM-18C**

### MASTER CARTON

SIZE: 18.27 x 15.87 x 12.67 in.  
CUBE: 2.13 Ft. WT: 20.50 lbs. Quantity: 4 pcs.

### UNIT DIMENSIONS

SIZE: 7.78 x 8.95 x 12.13 in.  
CUBE: 0.49 Ft. WT: 4.90 lbs.

# Cuisinart®



## Supreme Grind™ Automatic Burr Mill

- Burr grinding provides uniform grind and optimum flavour
- Brushed stainless steel housing
- 18-position grind selector - from ultra-fine to extra-coarse
- 4 to 18-cup slide dial
- Removable 8 oz. bean hopper
- Removable grind chamber holds enough ground coffee for 32 cups
- Separate one-touch power bar
- Electric timer automatically shuts off unit when grind cycle is complete
- Limited 3-year warranty

**MODEL: DBM-8C**

### MASTER CARTON

SIZE: 15.80 x 9.50 x 13.00 in.  
CUBE: 1.13 Ft. WT: 11.00 lbs. Quantity: 2 pcs.

### UNIT DIMENSIONS

SIZE: 7.50 x 8.80 x 12.30 in.  
CUBE: 0.47 Ft. WT: 4.80 lbs.

# Cuisinart®



## Grind Central® Coffee Grinder

- Heavy-duty motor that grinds beans for up to 18 cups (2.6 L) of coffee
- Brushed stainless steel housing
- One-touch control and removable bowl with storage lid
- Cord fits inside the base for compact storage
- Limited 18-month warranty

**MODEL: DCG-12BCEC**

### MASTER CARTON

SIZE: 12.38 x 10.25 x 9.75 in.  
CUBE: 0.72 Ft. WT: 14.00 lbs. Quantity: 4 pcs.

### UNIT DIMENSIONS

SIZE: 5.00 x 6.00 x 9.00 in.  
CUBE: 0.16 Ft. WT: 3.20 lbs.

# Cuisinart®



## Coffee Bar™ Coffee Grinder

- Capacity allows you to grind enough coffee for 12 cups at a time
- Stainless steel bowl and blade assembly
- One touch operation
- Limited 18-month warranty

**MODEL: DCG-20BKNC**

### **MASTER CARTON**

SIZE: 13.00 x 8.80 x 8.00 in.  
CUBE: 0.53 Ft. WT: 11.20 lbs. Quantity: 6 pcs.

### **UNIT DIMENSIONS**

SIZE: 4.00 x 4.00 x 7.00 in.  
CUBE: 0.07 Ft. WT: 1.80 lbs.

# Cuisinart®



## Touchscreen burr mill coffee grinder

- Flat burr in stainless steel material
- Touch buttons: Power on/off, number of cups, manual, grid start / stop
- LCD Display shows number of cups and countdown timer
- 1-14 cup selection
- Bean hopper can hold 8oz light to medium roasted coffee bean, 7oz dark roast coffee bean
- Ground container holds enough coffee for 32 cups
- 1-18 grind setting by rotating hopper

**MODEL: DBM-T10C**

### **MASTER CARTON**

SIZE: 7.75 x 9 x 12.50 in.

CUBE: 0.504 Ft. WT: 5 lbs. Quantity: 1 pcs.

### **UNIT DIMENSIONS**

SIZE: 7.50 x 8.75 x 12.25 in.

CUBE: 0.465 Ft. WT: 5 lbs.



**Cuisinart®**

KITCHEN ELECTRICS

**KETTLES**

# Cuisinart®



## Digital Gooseneck Kettle

- 1.0-liter Electric Gooseneck Kettle
- Precision gooseneck spout designed for precise pour control
- Design gives complete control over water distribution leading to better extraction and better tasting coffee and tea
- 1200W for fast heat up
- Variable temperature control from 140°-212°F
- Base with touchpad control panel and with real-time temperature display
- 30-minute Keep Warm option
- Stainless-steel kettle body and lid with matte black finish

**MODEL: GK-1C**

### MASTER CARTON

SIZE: 10 x 11.125 x 9.125 in.  
CUBE: 0.587 Ft. WT: 4.5 lbs. Quantity: 1 pcs.

### UNIT DIMENSIONS

SIZE: 9.50 x 10.625 x 8.625 in.  
CUBE: 0.503 Ft. WT: 4.175 lbs.

# Cuisinart®



## PerfectTemp™ Cordless Programmable Kettle

- 1500 watts of power for quick heat up
- 1.7 L kettle capacity
- 6 preset temperature controls with blue LED indicators make it easy to select the right temperature
- Cordless convenience
- Overheat and boil dry protection
- 30-minute keep warm option
- Perfect memory – holds settings when removed from base
- Dripless pour spout, stay-cool handle, and quick lid-release button for easy filling
- Stainless steel housing
- Limited 3-year warranty

**MODEL: CPK-17C**

### MASTER CARTON

SIZE: 16.30 x 9.30 x 12.80 in.

CUBE: 1.12 Ft. WT: 9.00 lbs. Quantity: 2 pcs.

### UNIT DIMENSIONS

SIZE: 7.80 x 8.50 x 11.80 in.

CUBE: 0.45 Ft. WT: 3.80 lbs.



# Cuisinart®



## Cordless Electric Kettle

- 1500 watts of power for quick heat-up
- 1.7 L kettle capacity
- Simple on/off switch with blue LED indicator makes the kettle easy to use
- Cordless convenience
- Overheat and boil dry protection
- Water never touches the hidden heating element, reducing calcium buildup so there's less to alter the clean taste of water
- Stainless steel housing
- Limited 3-year warranty

**MODEL: DK-17C**

### MASTER CARTON

SIZE: 19.50 x 10.00 x 24.50 in.  
CUBE: 2.77 Ft. WT: 18.90 lbs. Quantity: 4 pcs.

### UNIT DIMENSIONS

SIZE: 9.50 x 9.25 x 11.75 in.  
CUBE: 0.60 Ft. WT: 4.30 lbs.

\*

# Cuisinart®



## ViewPro™ Glass Kettle

- 1500 watts of power for quick heat-up
- 1.7 L capacity with glass body
- Cordless convenience
- Overheat and boil dry protection
- Extra-large detachable lime scale filter
- Energy-efficient integrated steam tube
- Elegant stainless steel kettle base with cord wrap
- Limited 3-year warranty

**MODEL: GK-17C**

### MASTER CARTON

SIZE: 13.50 x 19.00 x 12.50 in.

CUBE: 1.85 Ft. WT: 17.00 lbs. Quantity: 4 pcs.

### UNIT DIMENSIONS

SIZE: 9.00 x 6.75 x 12.00 in.

CUBE: 0.42 Ft. WT: 4.00 lbs.

\*

# Cuisinart®

---

## Programmable Tea Steeper and Kettle

---



- 1.7L Capacity
- Automatic Up-Down brew basket
- 5 Preset Temperatures for Green, White, Oolong, Herbal, Black Tea or customize your own temperature
- Tea Strength settings – Strong / Medium / Mild and Custom
- Auto Start Feature
- Quick Boil Feature
- Keep warm Feature
- Limited 3-Year Warranty

MODEL: TEA-200C



**Cuisinart**<sup>®</sup>

KITCHEN ELECTRICS

**FOOD  
PROCESSORS**

Cuisinart  
14-CUP FOOD PROCESSOR

# Cuisinart®

---

## CompleteChef™ 18-Cup Cooking Food Processor

---



- Ultra-versatile cooking food processor excels at chopping, dicing, shredding, slow-cooking, steaming, simmering and baking.
- 550 Watt Motor / 1000 Watt Heater
- Extra-large 18-cup stainless steel work bowl/cooking vessel (with two handles)
- Features push-button pulse/on/off, digital TFT screen with programmed functions, 200 preprogrammed recipes
- Warms, steams, simmers, boils and cooks with temperature range from 85°F–285°F.
- Slicing disc cuts produce and meat into uniform slices with clean edges.
- Reversible shredding disc processes cheese, vegetables, nuts and chocolate to desired texture.
- Chopping blade processes food and thoroughly mixes ingredients.
- Adjustable dicing kit produces finely chopped produce, meat and cheese.
- Dough blade is ideal for making bread, focaccia and pizza dough.
- Whisk creates lofty whipped cream, egg whites, batters and more.
- Comes with steamer basket, stirring paddle, funnel and spatula.
- Extra-large feed tube accommodates whole ingredients with no pre-cutting.
- Inner feed tube and pusher help incorporate liquid and small ingredients.
- Touchscreen operates in English, French and Spanish with adjustable brightness and sound.
- Limited 3-Year Warranty

# Cuisinart®



## **Elemental™ 8-Cup (1.9 L) Food Processor**

- 350 watt motor
- 8-cup (1.9 L) capacity
- Two reversible stainless steel discs shred or slice  
-medium or fine
- Stainless steel mixing/chopping kneading blade
- Easy to use rubberized control panel with high, low, off and pulse
- Limited 2-year warranty

**MODEL: FP-8SVEC**

### **MASTER CARTON**

SIZE: 21.25 x 11.50 x 18.75 in.

CUBE: 2.65 Ft. WT: 21.20 lbs. Quantity: 2 pcs.

### **UNIT DIMENSIONS**

SIZE: 10.50 x 11.00 x 18.00 in.

CUBE: 1.20 Ft. WT: 9.80 lbs.

# Cuisinart®



## Elite Collection® 2.0 12-Cup (2.8 L) Food Processor

- 1000 watt peak power motor
- 12 cup (2.8 L) & 4 cup (1 L) nested work bowls
- Adjustable slicing disc/reversible shredding disc thick to thin-fine or coarse
- Large and small chopping/mixing blades and dough blade included
- Multiple food prep functions: chop, purée, emulsify, mix, knead, shred, and slice
- Sealtight® advantage system - seals bowls and locks blades
- 10-year motor warranty
- Limited 3-year product warranty

**MODEL: FP-12DCNC**

### **MASTER CARTON**

SIZE: 13.75 x 12.00 x 19.50 in.

CUBE: 1.86 Ft. WT: 22.32 lbs. Quantity: 1 pcs.

### **UNIT DIMENSIONS**

SIZE: 13.00 x 11.50 x 18.50 in.

CUBE: 1.60 Ft. WT: 21.02 lbs.

# Cuisinart®



## Elite Collection® 2.0 14-Cup (3.5 L) Food Processor

- 1300 watt peak power motor
- 14 cup (3.5 L) & 4.5 cup (1.1 L) nested work bowls
- Adjustable slicing disc/reversible shredding disc thick to thin-fine or coarse
- Large and small chopping/mixing blades and dough blade included
- Multiple food prep functions: chop, purée, emulsify, mix, knead, shred, and slice
- Sealtight® advantage system - seals bowls and locks blades
- Accessory storage case included
- 20-year motor warranty
- Limited 3-year product warranty

**MODEL: FP-14DCNC**

### MASTER CARTON

SIZE: 20.75 x 13.75 x 17.25 in.  
CUBE: 2.85 Ft. WT: 26.94 lbs. Quantity: 1 pcs.

### UNIT DIMENSIONS

SIZE: 13.25 x 20.75 x 16.25 in.  
CUBE: 2.59 Ft. WT: 25.24 lbs.

\*



# Cuisinart®



## **Elemental™ 11-Cup (2.6L) Food Processor**

- 550 watt motor
- 11-cup (2.6 L) work bowl
- Adjustable slicing disc/reversible shredding disc thick to thin – fine or coarse
- Chopping/mixing blades and dough blade included
- Supreme® wide-mouth feed tube accommodates whole fruits and vegetables
- Sealtight® advantage system - seals bowls and locks blades
- Accessory storage case included
- Limited 3-year warranty

**MODEL: FP-11SSVEC**

### **MASTER CARTON**

SIZE: 20.50 x 12.00 x 18.00 in.

CUBE: 2.53 Ft. WT: 15.40 lbs. Quantity: 1 pcs.

### **UNIT DIMENSIONS**

SIZE: 19.80 x 11.20 x 17.00 in.

CUBE: 2.26 Ft. WT: 16.76 lbs.

# Cuisinart®



## Classic 14-Cup (3.5 L) Food Processor

- 720 watt motor
- 14-cup work bowl
- Extra-large feed tube
- Stainless steel chopping/mixing blade included
- Medium shredding disc & 4mm slicing disc included
- Control paddles provide single-touch on, off and pulse
- Stainless steel construction
- 5-year motor warranty
- Limited 3-year product warranty

**MODEL: DFP-14BCNYC**

### MASTER CARTON

SIZE: 13.00 x 10.25 x 15.75 in.

CUBE: 1.21 Ft. WT: 18.80 lbs. Quantity: 1 pcs.

### UNIT DIMENSIONS

SIZE: 9.50 x 12.50 x 15.00 in.

CUBE: 1.03 Ft. WT: 17.80 lbs.

# Cuisinart®

## 3-in-1 Multifunctional Kitchen Centre™

- All-in one Versatility - Equipped with 3 attachments to easily convert from food processor to blender to juice extractor
- 8-cup (2 L) Food Processor to Mix, chop, purée, shred, slice, and more with ease
- 40 oz. (1.2 L) Blending Jar - Covers the full range of blending tasks, from smoothies to puréed soups
- Juice extractor - Effortlessly turn whole fruits and vegetables into delicious juice
- Single-dial control for food processing, blending, and juicing functions
- 500-watt motor to prep, blend, and juice to perfection

**MODEL: CFP-800C**



### **MASTER CARTON**

SIZE: 20.50 x 12 x 17.75 in.

CUBE: 2.526 Ft. WT: 17.5 lbs. Quantity: 1 pcs.

### **UNIT DIMENSIONS**

SIZE: 11 x 20 x 16.88 in.

CUBE: 2.149 Ft. WT: 16.3 lbs.



**Cuisinart**<sup>®</sup>

KITCHEN ELECTRICS

**PASTA &  
BREAD MAKERS**



# Cuisinart®



## **Pastafecto® Pasta/Bread Dough Maker**

- Mixes, kneads, and extrudes up to one pound of fresh pasta in 20 minutes
- Mix and knead up to one pound of bread dough
- Compact, space-saving design
- Includes Six pasta discs - spaghetti, rigatoni, fusilli, small macaroni, fettuccine, bucatini
- Flour and liquid measuring cups
- Storage drawer and bag
- Cleaning tool

**MODEL: PM-1C**

### **MASTER CARTON**

SIZE: 17.6 x 9.1 x 13.3 in.

CUBE: 1.232 Ft. WT: 12.2 lbs. Quantity: 1 pcs.

### **UNIT DIMENSIONS**

SIZE: 17.1 x 8.07 x 12.7 in.

CUBE: 1.014 Ft. WT: 11.9 lbs.

# Cuisinart®



## Convection Bread Maker

- 680 watts of power
- 16 preprogrammed menu options, 3 crust colours, and 3 loaf sizes
- Over 100 bread, dough/pizza dough, sweet cake and jam choices
- Brushed stainless steel housing
- Removable lid with viewing window
- Unique convection feature circulates air for superior crust colour and texture
- 15-minute pause and 12-hour-delay start
- Limited 3-year warranty

**MODEL: CBK-200C**

### MASTER CARTON

SIZE: 19.00 x 13.25 x 15.75 in.  
CUBE: 2.30 Ft. WT: 22.80 lbs. Quantity: 1 pcs.

### UNIT DIMENSIONS

SIZE: 12.25 x 18.00 x 14.75 in.  
CUBE: 1.88 Ft. WT: 20.60 lbs.

# Cuisinart®



## Compact Automatic Breadmaker

- 12 preprogrammed menu options – fully automatic, easy to use
- 3 crust shades – light, medium, or dark
- Bakes up to a 2-pound loaf
- Vertical baking pan for counter-friendly compact design
- Lid with viewing window to monitor the process
- Removable kneading paddle and bread pan
- Interior light to check bread as it bakes
- Easy-to-read led display
- Bake-only option
- 13-hour delay start – fresh bread, anytime!
- Power failure backup
- Limited 3-Year Warranty

**MODEL: CBK-110C**

### MASTER CARTON

SIZE: 12.00 x 10.00 x 13.00 in.

CUBE: 2.63 Ft. WT: 16.00 lbs. Quantity: 2 pcs.

### UNIT DIMENSIONS

SIZE: 10.50 x 13.50 x 13.75 in.

CUBE: 1.13 Ft. WT: 8.00 lbs.



**Cuisinart®**

KITCHEN ELECTRICS

**TOASTERS**



# Cuisinart®



## 2 Slice Digital Toaster

- MemorySet feature -easily save and select your favourite settings
- Large digital screen with countdown timer
- 7 bread types to toast your bread just right -White, Grain, Bagel, Sweet, Waffles, English Muffin & Gluten Free
- Shade selector from light to dark (1-7)
- Defrost and Single Slice options
- High-lift lever for easy bread removal
- Unique sleek aesthetic with full stainless steel housing

**MODEL: CPT-720C**

### MASTER CARTON

SIZE: 13 x 8.07 x 9.33 in.  
CUBE: 0.566 Ft. WT: 3.75 lbs. Quantity: 1 pcs.

### UNIT DIMENSIONS

SIZE: 11.34 x 6.86 x 7.19 in.  
CUBE: 0.323 Ft. WT: 3 lbs.

# Cuisinart®

## 4 Slice Digital Toaster

- MemorySet feature -easily save and select your favourite settings
- Large digital screen with countdown timer
- 7 bread types to toast your bread just right -White, Grain, Bagel, Sweet, Waffles, English Muffin & Gluten Free
- Shade selector from light to dark (1-7)
- Defrost and Single Slice options
- High-lift lever for easy bread removal
- Unique sleek aesthetic with full stainless steel housing

**MODEL: CPT-740C**



### MASTER CARTON

SIZE: 13.58 x 13.12 x 9.45 in.  
CUBE: 0.974 Ft. WT: 7 lbs. Quantity: 1 pcs.

### UNIT DIMENSIONS

SIZE: 11.73 x 11.44 x 7.29 in.  
CUBE: 0.566 Ft. WT: 6 lbs.

# Cuisinart®

---

## Long-Slot Toaster

---



- 7 shade settings-Cancel, Bagel, Reheat and Defrost buttons
- Large self-centering dual slots perfect for different types of breads
- High-lift lever for easy checking
- Stainless steel housing
- Classic retro aesthetic
- Chrome-ringed LED buttons
- Removable crumb tray
- Limited 3 year warranty

MODEL: CPT-2500C

# Cuisinart®



## 2-Slice Countdown Mechanical Toaster

- 7 precise shade settings
- 1.5 in. (3.75 cm) wide slots
- Large LCD countdown display
- Brushed stainless steel housing
- Extra-lift levers elevate the internal carriage to let you easily remove toast
- Bagel, defrost and reheat controls
- Slide out crumb tray for easy clean-up
- Limited 3-year warranty

**MODEL: CPT-415C**

### MASTER CARTON

SIZE: 17.25 x 13.00 x 19.00 in.  
CUBE: 2.47 Ft. WT: 19.80 lbs. Quantity: 4 pcs.

### UNIT DIMENSIONS

SIZE: 8.50 x 12.50 x 9.80 in.  
CUBE: 0.60 Ft. WT: 4.60 lbs.

# Cuisinart®

## 4-Slice Motorized Toaster



- Lever-less toaster
- 1.5 in. (3.75 cm) wide slots
- Brushed stainless steel housing
- 7 precise shade settings
- Blue LCD displays with countdown timers
- Perfect bagel toasting
- Defrost and reheat controls
- Slide out crumb tray for easy clean-up
- Limited 3-year warranty

**MODEL: CPT-440C**

### MASTER CARTON

SIZE: 14.00 x 13.25 x 19.75 in.  
CUBE: 2.12 Ft. WT: 17.50 lbs. Quantity: 2 pcs.

### UNIT DIMENSIONS

SIZE: 13.25 x 12.50 x 9.50 in.  
CUBE: 0.91 Ft. WT: 8.20 lbs.

# Cuisinart®



## 2-Slice Compact Toaster - Black

- Space-saving design
- 7 precise shade settings
- 1.5 in. (3.75 cm) wide slots
- Blue LED indicators
- Extra-lift levers elevate the internal carriage to let you easily remove toast
- Stainless steel accents
- Slide out crumb tray for easy clean-up
- Limited 3-year warranty

**MODEL: CPT-122BKC**

### MASTER CARTON

SIZE: 16.00 x 12.63 x 17.75 in.  
CUBE: 2.08 Ft. WT: 16.80 lbs. Quantity: 4 pcs.

### UNIT DIMENSIONS

SIZE: 12.25 x 7.75 x 8.50 in.  
CUBE: 0.47 Ft. WT: 3.86 lbs.

# Cuisinart®



## 2-Slice Compact Toaster - White

- Space-saving design
- 7 precise shade settings
- 1.5 in. (3.75 cm) wide slots
- Blue LED indicators
- Extra-lift levers elevate the internal carriage to let you easily remove toast
- Stainless steel accents
- Slide out crumb tray for easy clean-up
- Limited 3-year warranty

**MODEL: CPT-122C**

### **MASTER CARTON**

SIZE: 16.00 x 12.63 x 17.75 in.  
CUBE: 2.08 Ft. WT: 16.80 lbs. Quantity: 4 pcs.

### **UNIT DIMENSIONS**

SIZE: 12.25 x 7.75 x 8.50 in.  
CUBE: 0.47 Ft. WT: 3.86 lbs.

# Cuisinart®

## 4-Slice Compact Toaster - Black



- Dual control panels
- 7 precise shade settings
- 1.5 in. (3.75 cm) wide slots
- Blue LED indicators
- Extra-lift levers elevate the internal carriage to let you easily remove toast
- Stainless steel accents
- Slide out crumb tray for easy clean-up
- Limited 3-year warranty

**MODEL: CPT-142BKC**

### **MASTER CARTON**

SIZE: 12.75 x 12.50 x 18.00 in.  
CUBE: 1.66 Ft. WT: 13.42 lbs. Quantity: 2 pcs.

### **UNIT DIMENSIONS**

SIZE: 12.25 x 11.75 x 8.75 in.  
CUBE: 0.73 Ft. WT: 6.12 lbs.



# Cuisinart®

## 4-Slice Compact Toaster - White



- Dual control panels
- 7 precise shade settings
- 1.5 in. (3.75 cm) wide slots
- Blue LED indicators
- Extra-lift levers elevate the internal carriage to let you easily remove toast
- Stainless steel accents
- Slide out crumb tray for easy clean-up
- Limited 3-year warranty

**MODEL: CPT-142C**

### **MASTER CARTON**

SIZE: 12.75 x 12.50 x 18.00 in.  
CUBE: 1.66 Ft. WT: 13.42 lbs. Quantity: 2 pcs.

### **UNIT DIMENSIONS**

SIZE: 12.25 x 11.75 x 8.75 in.  
CUBE: 0.73 Ft. WT: 6.12 lbs.

# Cuisinart®



## 2-Slice Metal Classic Toaster

- 6 precise shade settings
- Brushed stainless steel housing
- 1.5 in. (3.75 cm) wide slots
- Extra-lift levers elevate the internal carriage to let you easily remove toast
- Dual reheat, defrost + bagel buttons with LED indicators
- Slide out crumb tray for easy clean-up
- Limited 3-year warranty

**MODEL: CPT-160C**

### **MASTER CARTON**

SIZE: 17.30 x 12.30 x 9.00 in.  
CUBE: 1.12 Ft. WT: 9.60 lbs. Quantity: 2 pcs.

### **UNIT DIMENSIONS**

SIZE: 8.30 x 11.50 x 8.00 in.  
CUBE: 0.44 Ft. WT: 4.40 lbs.

# Cuisinart®

## 4-Slice Metal Classic Toaster



- 6 precise shade settings
- Brushed stainless steel housing
- 1.5 in. (3.75 cm) wide slots
- Extra-lift levers elevate the internal carriage to let you easily remove toast
- Dual reheat, defrost + bagel buttons with LED indicators
- Slide out crumb tray for easy clean-up
- Limited 3-year warranty

**MODEL: CPT-180C**

### **MASTER CARTON**

SIZE: 13.00 x 12.00 x 16.80 in.  
CUBE: 1.52 Ft. WT: 13.60 lbs. Quantity: 2 pcs.

### **UNIT DIMENSIONS**

SIZE: 11.50 x 12.50 x 8.00 in.  
CUBE: 0.67 Ft. WT: 6.40 lbs.

# Cuisinart®



## 2-Slice Motorized Toaster

- Lever-less toaster
- 1.5 in. (3.75 cm) wide slots
- Brushed stainless steel housing
- 7 precise shade settings
- Blue LCD display with countdown timer
- Perfect bagel toasting
- Defrost and reheat controls
- Slide out crumb tray for easy clean-up
- Limited 3-year warranty

**MODEL: CPT-420C**

### MASTER CARTON

SIZE: 17.00 x 12.00 x 16.50 in.  
CUBE: 1.95 Ft. WT: 22.50 lbs. Quantity: 4 pcs.

### UNIT DIMENSIONS

SIZE: 8.50 x 11.50 x 8.00 in.  
CUBE: 0.45 Ft. WT: 5.20 lbs.

# Cuisinart®

## 4-Slice Countdown Mechanical Toaster



- Dual control panels
- 7 precise shade settings
- 1.5 in. (3.75 cm) wide slots
- Brushed stainless steel housing
- Extra lift levers elevate the internal carriage to let you easily remove toast
- Large LCD countdown display
- Bagel, defrost and reheat controls
- Slide out crumb tray for easy clean-up
- Limited 3-year warranty

**MODEL: CPT-435C**

### MASTER CARTON

SIZE: 13.00 x 13.00 x 19.00 in.  
CUBE: 1.90 Ft. WT: 15.50 lbs. Quantity: 2 pcs.

### UNIT DIMENSIONS

SIZE: 12.25 x 12.50 x 9.00 in.  
CUBE: 0.80 Ft. WT: 7.20 lbs.

# Cuisinart®

## 4-Slice Custom Select™ Toaster



- Toast options: Bread, Bagel, English Muffin, Frozen Waffle and Pastry
- Unique Single Slice Function allows for even toasting side to side
- 4-slot version
- 1 1/2 in. wide toasting slots
- Crisp modern design
- Slide-out crumb tray
- 7 Shade settings
- High lift carriage
- Defrost option
- Limited 3-year warranty

**MODEL: CPT-640C**

### MASTER CARTON

SIZE: 13.50 x 13.25 x 19.25 in.  
CUBE: 2.03 Ft. WT: 16.80 lbs. Quantity: 2 pcs.

### UNIT DIMENSIONS

SIZE: 13.00 x 13.00 x 9.25 in.  
CUBE: 0.91 Ft. WT: 8.40 lbs.

# Cuisinart®



## 2-Slice Custom Select™ Toaster

- Toast options: Bread, Bagel, English Muffin, Frozen Waffle and Pastry
- Unique Single Slice Function allows for even toasting side to side
- 2-slots
- Crisp modern design
- Wide slots
- 7 shade settings
- High lift carriage
- Defrost option
- 1 1/2 in. wide toasting slots
- Slide out crumb tray
- Limited 3-year warranty

**MODEL: CPT-620C**

### MASTER CARTON

SIZE: 17.00 x 13.75 x 20.00 in.  
CUBE: 2.71 Ft. WT: 20.50 lbs. Quantity: 4 pcs.

### UNIT DIMENSIONS

SIZE: 8.50 x 13.00 x 9.50 in.  
CUBE: 0.61 Ft. WT: 4.60 lbs.

# Cuisinart®



## 4-slice touchscreen toaster

- Full touchpad controls
- 6 shade settings
- Bagel, Single Slice, Defrost and Cancel functions
- QuickView feature to check progress during the toasting process
- +30 seconds to add toasting time
- Extra-wide 1 1/2" toast slots with high-lift lever
- Removable crumb tray(s)

**MODEL: CPT-T40C**

### **MASTER CARTON**

SIZE: 13.25 x 13.25 x 9.50 in.

CUBE: 0.965 Ft. WT: 8 lbs. Quantity: 1 pcs.

### **UNIT DIMENSIONS**

SIZE: 13 x 13 x 9.25 in.

CUBE: 0.904 Ft. WT: 8 lbs.



# Cuisinart®



## 2-slice touchscreen toaster

- Full touchpad controls
- 6 shade settings
- Bagel, Single Slice, Defrost and Cancel functions
- QuickView feature to check progress during the toasting process
- +30 seconds to add toasting time
- Extra-wide 1 1/2" toast slots with high-lift lever
- Removable crumb tray(s)

**MODEL: CPT-T20C**

### MASTER CARTON

SIZE: 8.50 x 13.25 x 9.50 in.  
CUBE: 0.619 Ft. WT: 5.05 lbs. Quantity: 1 pcs.

### UNIT DIMENSIONS

SIZE: 8.25 x 13 x 9.25 in.  
CUBE: 0.574 Ft. WT: 5.05 lbs.

\*



**alternative  
milks**

**pressed  
juices**

**refreshing  
tonics &  
spritzers**

**Cuisinart**

KITCHEN ELECTRICS

**JUICERS**

# Cuisinart®



## Juice Extractor

- 1000 watts of power
- Die-cast and stainless steel housing
- Exclusive easy unlock and lift system, foam management filter disk and anti-drip adjustable flow spout
- Quiet operation
- Large 3 inch feed tube for whole fruits and vegetables
- 5-speed dial control with blue LED light ring
- 2 L pulp container
- 1 L juice pitcher
- Easily juices hard and soft produce
- Limited 3-year warranty

**MODEL: CJE-1000C**

### **MASTER CARTON**

SIZE: 24.25 x 16.00 x 19.75 in.  
CUBE: 4.44 Ft. WT: 30.40 lbs. Quantity: 2 pcs.

### **UNIT DIMENSIONS**

SIZE: 11.75 x 15.50 x 19.00 in.  
CUBE: 2.00 Ft. WT: 13.90 lbs.

# Cuisinart®



## Cuisinart® Easy Clean Slow Juicer

- Masticating Slow Juicer
- Extracts the most juice for nutritious beverages
- Mesh-free easy clean filter
- Removable parts are top rack dishwasher safe
- Fresh produce, nuts, and greens are slow pressed for the most efficient extraction

**MODEL: CSJ-300C**

### **MASTER CARTON**

SIZE: 23 x 16.38 x 13.5 in.

CUBE: 2.943 Ft. WT: 25.2 lbs. Quantity: 1 pcs.

### **UNIT DIMENSIONS**

SIZE: 11.25 x 15.75 x 12.75 in.

CUBE: 1.307 Ft. WT: 12.6 lbs.

# Cuisinart®



## Citrus Juicer

- Adjustable reamer for pulp control
- Universal juicing cone
- Extra-long drip-proof spout
- Brushed stainless steel housing
- Limited 3-year warranty

**MODEL: CCJ-500C**

### **MASTER CARTON**

SIZE: 14.00 x 9.00 x 13.00 in.

CUBE: 0.95 Ft. WT: 8.20 lbs. Quantity: 2 pcs.

### **UNIT DIMENSIONS**

SIZE: 6.75 x 8.00 x 12.25 in.

CUBE: 0.38 Ft. WT: 3.40 lbs.



**Cuisinart®**

KITCHEN ELECTRICS

**STAND  
MIXERS**

# Cuisinart®



## **Fresh Fruit & Ice Cream Maker Attachment**

- Large 1½ qt. (1.4 L) capacity
- Mix right in the freezer bowl, ready in 18 to 25 minutes
- Two paddles; one to mash and process fresh fruit, one for ice cream and frozen yogurt
- Limited 1-year warranty

**MODEL: IC-50C**

### **MASTER CARTON**

SIZE: 20.50 x 10.50 x 12.00 in.

CUBE: 1.50 Ft. WT: 11.94 lbs. Quantity: 2 pcs.

### **UNIT DIMENSIONS**

SIZE: 9.75 x 9.75 x 11.25 in.

CUBE: 0.62 Ft. WT: 5.34 lbs.

# Cuisinart®



## **Meat Grinder Attachment with Sausage Stuffer Kit**

- Grinds any types of meat or poultry
- Grinding options include two grinding plates for burgers, stews, chili, spreads and more
- Make homemade sausage with large and small sausage nozzles
- Easy to attach: connects to front power port
- Limited 1-year warranty

**MODEL: MG-50C**

### **MASTER CARTON**

SIZE: 14.50 x 9.00 x 11.00 in.

CUBE: 0.83 Ft. WT: 6.00 lbs. Quantity: 2 pcs.

### **UNIT DIMENSIONS**

SIZE: 7.25 x 8.25 x 10.00 in.

CUBE: 0.35 Ft. WT: 2.70 lbs.



# Cuisinart®



## Pasta Extruder Attachment

- Six pasta plates: spaghetti, small or large macaroni, rigatoni, fusilli or bucatini
- Easy to attach: connects to front power port
- Storage case holds pasta plates when not in use
- Limited 1-year warranty

**MODEL: PE-50C**

### MASTER CARTON

SIZE: 11.00 x 10.00 x 9.25 in.  
CUBE: 0.59 Ft. WT: 6.90 lbs. Quantity: 2 pcs.

### UNIT DIMENSIONS

SIZE: 9.50 x 5.13 x 8.50 in.  
CUBE: 0.24 Ft. WT: 3.18 lbs.

# Cuisinart®

## Pasta Roller & Cutter Set Attachment (Set of 3)

- Stainless steel construction
- Roll out fresh, ready-to-cook pasta from homemade dough in minutes
- Pasta roller creates thin to thick pasta sheets for lasagna and more
- Fettuccine and spaghetti cutters cut pasta sheets into fettuccine or spaghetti
- Easy to attach: connects to front power port
- Limited 1-year warranty

**MODEL: PRS-50C**



### **MASTER CARTON**

SIZE: 11.25 x 10.00 x 9.50 in.

CUBE: 0.62 Ft. WT: 11.62 lbs. Quantity: 2 pcs.

### **UNIT DIMENSIONS**

SIZE: 4.75 x 10.75 x 8.50 in.

CUBE: 0.25 Ft. WT: 5.54 lbs.

# Cuisinart®

## Stainless Steel Stand Mixer Bowl

- 5.5 qt. (5.2 l) mixing bowl large capacity bowl
- Polished stainless steel won't absorb flavours or odours
- Dishwasher safe
- Wide, easy-to-grip handle
- Limited 1-year warranty

**MODEL: SM-50MBC**



### **MASTER CARTON**

SIZE: 18.50 x 9.75 x 9.00 in.  
CUBE: 0.94 Ft. WT: 4.48 lbs. Quantity: 2 pcs.

### **UNIT DIMENSIONS**

SIZE: 9.00 x 9.00 x 7.75 in.  
CUBE: 0.36 Ft. WT: 1.86 lbs.

# Cuisinart®



## Precision Master™ Spiralizer/Slicer Attachment

- Produces 8 different cuts of food
- 4 stainless steel cutting cones, each cone creates two different cuts:
  - 2.5mm: slice/ribbon
  - 3.0mm: crinkle cut/crinkle ribbon
  - 3.0mm: thin shred/spaghetti
  - 9.0mm: wide shred/spaghetti
- Slicer/shredder: angled feed tube and pusher
- Spiralizer: straight feed tube and pusher
- Cleaning brush included
- Limited 1 year warranty

**MODEL: SPI-50C**

### MASTER CARTON

SIZE: 17.25 x 12.63 x 13.00 in.  
CUBE: 1.50 Ft. WT: 8.00 lbs. Quantity: 2 pcs.

### UNIT DIMENSIONS

SIZE: 9.88 x 9.88 x 11.25 in.  
CUBE: 0.64 Ft. WT: 4.00 lbs.

# Cuisinart®



## **Precision Master™ 5.5 Qt (5.2 L) Stand Mixer - Silver**

- 500 watt motor
- 5.5 qt. (5.2 L) large capacity stainless steel bowl
- 59-point planetary mixing action
- 12 speeds let you go from ultra-gentle “fold” to powerfully fast whip in seconds
- Die cast metal construction
- Includes chef’s whisk, flat mixing paddle, dough hook and splashguard with pour spout
- Limited 3-year warranty

**MODEL: SM-50BCC**

### **MASTER CARTON**

SIZE: 17.25 x 12.00 x 17.13 in.  
CUBE: 2.05 Ft. WT: 22.22 lbs. Quantity: 1 pcs.

### **UNIT DIMENSIONS**

SIZE: 11.25 x 16.50 x 16.25 in.  
CUBE: 1.75 Ft. WT: 20.82 lbs.

# Cuisinart®



## Precision Master™ 5.5 Qt (5.2 L) Stand Mixer - Black

- 500 watt motor
- 5.5 qt. (5.2 L) large capacity stainless steel bowl
- 59-point planetary mixing action
- 12 speeds let you go from ultra-gentle “fold” to powerfully fast whip in seconds
- Die cast metal construction
- Includes chef’s whisk, flat mixing paddle, dough hook and splashguard with pour spout
- Limited 3-year warranty

**MODEL: SM-50BKC**

### MASTER CARTON

SIZE: 17.25 x 12.00 x 17.13 in.  
CUBE: 2.05 Ft. WT: 22.22 lbs. Quantity: 1 pcs.

### UNIT DIMENSIONS

SIZE: 11.25 x 16.50 x 16.25 in.  
CUBE: 1.75 Ft. WT: 20.82 lbs.

# Cuisinart®



## **Precision Master™ 5.5 Qt (5.2 L) Stand Mixer - White**

- 500 watt motor
- 5.5 qt. (5.2 L) large capacity stainless steel bowl
- 59-point planetary mixing action
- 12 speeds let you go from ultra-gentle “fold” to powerfully fast whip in seconds
- Die cast metal construction
- Includes chef’s whisk, flat mixing paddle, dough hook and splashguard with pour spout
- Limited 3-year warranty

**MODEL: SM-50C**

### **MASTER CARTON**

SIZE: 17.25 x 12.00 x 17.13 in.

CUBE: 2.05 Ft. WT: 22.22 lbs. Quantity: 1 pcs.

### **UNIT DIMENSIONS**

SIZE: 11.25 x 16.50 x 16.25 in.

CUBE: 1.75 Ft. WT: 20.82 lbs.

# Cuisinart®



## **Precision Master™ 5.5 Qt (5.2 L) Stand Mixer - Red**

- 500 watt motor
- 5.5 qt. (5.2 L) large capacity stainless steel bowl
- 59-point planetary mixing action
- 12 speeds let you go from ultra-gentle “fold” to powerfully fast whip in seconds
- Die cast metal construction
- Includes chef’s whisk, flat mixing paddle, dough hook and splashguard with pour spout
- Limited 3-year warranty

**MODEL: SM-50RC**

### **MASTER CARTON**

SIZE: 17.25 x 12.00 x 17.13 in.  
CUBE: 2.05 Ft. WT: 22.22 lbs. Quantity: 1 pcs.

### **UNIT DIMENSIONS**

SIZE: 11.25 x 16.50 x 16.25 in.  
CUBE: 1.75 Ft. WT: 20.82 lbs.



# Cuisinart®



## **Precision Master™ 3.5 Qt (3.3 L) Compact Stand Mixer**

- 350 watt motor
- 3.5 qt. (3.3L) capacity stainless steel bowl
- 12 speeds let you go from ultra gentle “fold” to powerfully fast whip in seconds
- Die cast metal construction
- Includes chef’s whisk, flat mixing paddle, dough hook and splashguard with pour spout
- Limited 3-year warranty

**MODEL: SM-35BCC**

### **MASTER CARTON**

SIZE: 15.90 x 10.51 x 15.75 in.  
CUBE: 0.70 Ft. WT: 15.00 lbs. Quantity: 1 pcs.

### **UNIT DIMENSIONS**

SIZE: 5.50 x 12.50 x 12.35 in.  
CUBE: 0.49 Ft. WT: 15.00 lbs.

# Cuisinart®



## **Precision Master™ 3.5 QT (3.3L) Stand Mixer - Red**

- 350 watt full mixing power in a compact!
- 3.5 qt. (3.3 l) capacity stainless steel bowl
- 12 speeds let you go from ultra-gentle “fold” to powerfully fast whip in seconds
- Die cast metal construction
- Tilt-back head makes it easy to scrape and remove bowl
- Includes chef’s whisk, flat mixing paddle, dough hook and splashguard with pour spout

**MODEL: SM-35RC**

### **MASTER CARTON**

SIZE: 16.00 x 10.75 x 16.00 in.

CUBE: 1.592 Ft. WT: 17.80 lbs. Quantity: 1 pcs.

### **UNIT DIMENSIONS**

SIZE: 15.50 x 10.00 x 15.25 in.

CUBE: 1.367 Ft. WT: 17.80 lbs.

# Cuisinart®



## **Precision Master™ 4.5 Qt (4.2 L) Stand Mixer – Silver**

- 300 watt motor
- 4.5 qt. (4.2 L) stainless steel bowl
- 59-point planetary mixing action
- 12 speeds let you go from ultra-gentle “fold” to powerfully fast whip in seconds
- Die cast metal construction
- Includes chef’s whisk, flat mixing paddle, dough hook and splashguard with pour spout
- Limited 3-year warranty

**MODEL: SM-48BCC**

### **MASTER CARTON**

SIZE: 20.50 x 13.50 x 18.50 in.

CUBE: 2.96 Ft. WT: 24.50 lbs. Quantity: 1 pcs.

### **UNIT DIMENSIONS**

SIZE: 20.00 x 12.75 x 17.50 in.

CUBE: 2.58 Ft. WT: 23.50 lbs.

# Cuisinart®



## **Precision Master™ 4.5 Qt (4.2 L) Stand Mixer – Red**

- 300 watt motor
- 4.5 qt. (4.2 L) stainless steel bowl
- 59-point planetary mixing action
- 12 speeds let you go from ultra-gentle “fold” to powerfully fast whip in seconds
- Die cast metal construction
- Includes chef’s whisk, flat mixing paddle, dough hook and splashguard with pour spout
- Limited 3-year warranty

**MODEL: SM-48RC**

### **MASTER CARTON**

SIZE: 20.50 x 13.50 x 18.50 in.  
CUBE: 2.96 Ft. WT: 24.50 lbs. Quantity: 1 pcs.

### **UNIT DIMENSIONS**

SIZE: 20.00 x 12.75 x 17.50 in.  
CUBE: 2.58 Ft. WT: 23.50 lbs.

# Cuisinart®

## Precision Master™ petite 4.5 qt stand mixer



- 300 Watt Motor Plenty of power for double recipes and heavy mixing tasks
- Tilt-Back Head Makes it easy to attach accessories and scrape sides and bottom of bowl
- Attachment Port Optional attachment (sold separately) connect to the port located behind the port cover on the front of the stand mixer head
- A locking screw makes attachments easy to put on, secure and take off
- Accessory Port Chef's whisk, flat mixing paddle and dough hook connect to this port
- 4.5 Quart (4.25 L) Stainless Steel Bowl with Handle Handle makes the bowl easy to lift, hold, scrape and remove
- Large capacity bowl lets you mix larger quantities
- Head-Lift Release Lever Securely locks stand mixer head into raised, tilt-back position. Used to return mixer head to mixing position.
- On/Off and Speed Control Dial 12 speeds for precision mixing
- Blue Light Ring Illuminates when mixer is operating. Turns off in OFF position.
- Comes with Chef's Whisk, Flat Mixing Paddle, and Dough Hook

**MODEL: SM-48BKC**

### MASTER CARTON

SIZE: 16.70 x 10.70 x 17.00 in.

CUBE: 1.757 Ft. WT: 18.58 lbs. Quantity: 1 pcs.

### UNIT DIMENSIONS

SIZE: 16.20 x 10.10 x 16.00 in.

CUBE: 1.515 Ft. WT: 17.24 lbs.

# Cuisinart®



## Precision Master(TM) Pro 6.5 Qt. Stand Mixer

- 6.5-quart capacity
- 600-watt powerful motor
- Die-cast metal construction
- 12 speeds for precision mixing
- 59-point planetary mixing action
- Tilt-back head
- One power outlet for optional attachments
- Includes chef's whisk, dough hook, flat mixing paddle, and ingredient funnel

**MODEL: SM-65BCC**

### **MASTER CARTON**

SIZE: 17 x 11.7 x 17.9 in.

CUBE: 2.060 Ft. WT: 22 lbs. Quantity: 1 pcs.

### **UNIT DIMENSIONS**

SIZE: 16.5 x 11.2 x 17.3 in.

CUBE: 1.850 Ft. WT: 18.1 lbs.



KITCHEN ELECTRICS

# COUNTERTOP COOKING

Cuisinart®



# Cuisinart®

## 6 qt. (5.7l) High-Pressure Multi-cooker



- 6 Qt. (5.7L) non-stick cooking pot
- 1000 Watts of Power
- Automatic pressure settings reaching up to 15 PSI for faster cooking. (Cooking with pressure is 70% faster than conventional methods.)
- Large LCD panel and intuitive digital controls let you effortlessly select and customize cooking.
- 3 Pressure Settings for superior speed: Low / High / High +
- 12 Pre-programmed multi-functional settings include: Meat, Stew/Chili, Soup, Stock, Beans, Rice/Grains, Risotto, Slow Cook, Custom, Steam, Reduce, Sauté /Brown
- Automatic pressure release releases steam at the push of a button
- Cooking pot is dishwasher safe
- Unique Shape with brushed Stainless Steel housing

**MODEL: CPC-900C**

### MASTER CARTON

SIZE: 14.63 x 14.88 x 15.88 in.

CUBE: 2.000 Ft. WT: 16 lbs. Quantity: 1 pcs.

### UNIT DIMENSIONS

SIZE: 14.0 x 14.25 x 15.13 in.

CUBE: 1.746 Ft. WT: 16 lbs.



# Cuisinart®



## Stack5™ Multifunctional Grill

- Removable non-stick grill plate for grilling
- Removable, 5 quart non-stick deep pan for slow cooking, baking, browning / sautéing, steaming and griddling
- Removable stainless steel rack for steaming
- Removable lid
- Dial temperature control with preset temperatures
- Removable parts are dishwasher safe
- 1400 Watts

**MODEL: GR-M3CBC**

### MASTER CARTON

SIZE: 11.4 x 17.2 x 9.40 in.

CUBE: 1.066 Ft. WT: 11.8 lbs. Quantity: 1 pcs.

### UNIT DIMENSIONS

SIZE: 11.25 x 17.0 x 9.25 in.

CUBE: 1.023 Ft. WT: 11.5 lbs.

# Cuisinart®



## Programmable 3.5 Qt.(3.3 L) Slow Cooker

- Digital 24-hour countdown timer choose high, low or simmer
- Brushed stainless steel housing
- Automatically switches to warm to keep meals at an ideal serving temperature
- Limited 3-year warranty

**MODEL: PSC-350C**

### MASTER CARTON

SIZE: 15.62 x 11.58 x 10.23 in.  
CUBE: 1.07 Ft. WT: 12.70 lbs. Quantity: 1 pcs.

### UNIT DIMENSIONS

SIZE: 11.06 x 15.11 x 9.46 in.  
CUBE: 0.92 Ft. WT: 11.60 lbs.

# Cuisinart®



## 4-Cup Rice Cooker & Steamer

- Elegant brushed stainless steel housing with embossed Cuisinart logo and chrome plated side handles
- Makes 4 cups of cooked rice
- Traditional lever control with Warm and Cook Settings
- Warm and Cook Indicator Lights
- Automatically switches to Warm when rice is cooked
- Glass cover features a stainless steel rim and chrome knob
- Stainless steel vegetable, fish or chicken Steaming Pot that can be stored inside of Cooking Pot
- All removable parts are dishwasher safe
- Includes Measuring Cup and Rice Spoon
- Limited 3-year warranty

**MODEL: CRC-400C**

### MASTER CARTON

SIZE: 21.00 x 11.50 x 10.80 in.

CUBE: 1.51 Ft. WT: 13.40 lbs. Quantity: 2 pcs.

### UNIT DIMENSIONS

SIZE: 10.00 x 10.80 x 10.00 in.

CUBE: 0.63 Ft. WT: 6.00 lbs.



# SPECIALTY

Cuisinart®

# Cuisinart®



## Cordless Electric Wine Opener

- Foil cutter included; stores in the charging base
- Compact, cordless, lightweight design
- Simple operation; remove and eject switches
- Rechargeable battery and charging base
- Brushed stainless steel housing
- Limited 3 year warranty

**MODEL: CWO-50C**

### MASTER CARTON

SIZE: 12.50 x 12.30 x 10.25 in.  
CUBE: 0.91 Ft. WT: 10.56 lbs. Quantity: 4 pcs.

### UNIT DIMENSIONS

SIZE: 4.50 x 6.00 x 12.30 in.  
CUBE: 0.19 Ft. WT: 2.42 lbs.

# Cuisinart®

---

## ELECTRIC KNIFE & CUTTING BOARD SET

- Universal stainless steel micro-serrated blade cuts bread and meat
- Comfortable ergonomic handle for right- or left-handed use
- Carving/serving fork with stainless steel tines
- Compact bamboo cutting board
- Blade release button for quick, dishwasher cleanup
- Safety lock button instantly locks knife when trigger is released
- Storage tray for power handle, blade, fork – cutting board sits under tray
- Limited 3-Year Warranty

**MODEL: CEK-41C**



# Cuisinart®



## Electric Knife

- One-touch on/off operation
- Ergonomic handle, comfortable for right and left-handers
- 7.5 in. (19 cm) stainless steel blade for meats, breads, vegetables and more
- Blade is removable and dishwasher safe
- Limited 18-month warranty

**MODEL: CEK-30C**

### **MASTER CARTON**

SIZE: 8.75 x 6.00 x 12.50 in.

CUBE: 0.38 Ft. WT: 6.88 lbs. Quantity: 4 pcs.

### **UNIT DIMENSIONS**

SIZE: 4.25 x 2.75 x 11.88 in.

CUBE: 0.08 Ft. WT: 1.62 lbs.

# Cuisinart®

## Compact Deep Fryer

- 1000 watts of power
- Fry basket holds up to ¾ pound (340 g)
- Fast heat-up and frying
- Maximum oil capacity is 4.6 cups (1.1 L)
- Nonstick die-cast bowl with attached heating element for superior heating
- Removable charcoal filter for odour removal
- Adjustable thermostat up to 375°F (190°C)
- Brushed stainless steel housing
- Limited 3-year warranty

**MODEL: CDF-100C**



### **MASTER CARTON**

SIZE: 18.50 x 13.00 x 17.50 in.  
CUBE: 2.44 Ft. WT: 25.20 lbs. Quantity: 4 pcs.

### **UNIT DIMENSIONS**

SIZE: 12.50 x 9.00 x 8.50 in.  
CUBE: 0.55 Ft. WT: 6.00 lbs.



# Cuisinart®



## Professional Deep Fryer

- 1800 watts of power
- Mechanical timer
- Immersion style heating element
- One gallon (3.8 L) oil container capacity
- Heavy mesh basket with cool-touch collapsible handle
- Brushed stainless steel housing
- Limited 3-year warranty

**MODEL: CDF-250C**

### MASTER CARTON

SIZE: 26.75 x 19.25 x 13.25 in.

CUBE: 3.95 Ft. WT: 26.20 lbs. Quantity: 2 pcs.

### UNIT DIMENSIONS

SIZE: 13.00 x 18.50 x 12.75 in.

CUBE: 1.77 Ft. WT: 12.00 lbs.

# Cuisinart®



## Salt, Pepper & Spice Mill

- 5 grind settings for grinding sea salt, peppercorns, and a variety of dried spices
- 2-in-1 mill, two containers on one unit save space and operate easily with the touch of a button
- Base plugs into outlet to recharge so mill is always ready to operate
- Brushed stainless steel housing
- Two interchangeable grinding containers hold larger portions and require fewer refills
- Limited 3-year warranty

**MODEL: SG-3C**

### **MASTER CARTON**

SIZE: 15.00 x 9.00 x 12.00 in.

CUBE: 0.94 Ft. WT: 9.00 lbs. Quantity: 4 pcs.

### **UNIT DIMENSIONS**

SIZE: 4.25 x 7.25 x 10.75 in.

CUBE: 0.19 Ft. WT: 2.10 lbs.

# Cuisinart®



## Spice and Nut Grinder

- Custom blade construction grinds flax seed, quinoa, kamut and more
- Powerful grind heavy-duty motor and stainless steel blades deliver the perfect grind
- One-touch operation simply push the lid to grind
- The stainless bowl holds up to 90 grams of spices
- Limited 18-month warranty

**MODEL: SG-10C**

### MASTER CARTON

SIZE: 11.02 x 10.96 x 9.52 in.  
CUBE: 0.67 Ft. WT: 10.80 lbs. Quantity: 4 pcs.

### UNIT DIMENSIONS

SIZE: 5.39 x 5.30 x 9.05 in.  
CUBE: 0.15 Ft. WT: 2.50 lbs.

# Cuisinart®



## Professional Electric Meat Grinder

- Heavy-duty 300-watt motor grinds up to 3 pounds (1.36 kg) per minute
- Brushed stainless steel housing
- Two metal cutting plates for medium and coarse grinds
- Two sausage attachments for 1/2-inch (1.27 cm) and 3/8 in. (0.95 cm) casings
- On/off switch with reverse feature releases clogged foods for smooth operation
- Limited 3-year warranty

**MODEL: MG-200C**

### MASTER CARTON

SIZE: 18.00 x 18.00 x 12.75 in.  
CUBE: 2.39 Ft. WT: 21.38 lbs. Quantity: 2 pcs.

### UNIT DIMENSIONS

SIZE: 9.00 x 17.25 x 11.75 in.  
CUBE: 1.06 Ft. WT: 9.94 lbs.

# Cuisinart®

## Professional Food Slicer

- Powerful 130-watt motor
- Premium coated steel and die-cast aluminum housing
- Adjustable 7.5 in. (18.75 cm) undulated stainless steel blade slices a variety of foods
- Safe, stable operation: non-slip feet and a food guide ensure safe and steady operation
- Slice control knob adjusts from 5 mm to 15 mm to slice
- Limited 3-year warranty

**MODEL: CFS-155C**



### **MASTER CARTON**

SIZE: 18.70 x 11.30 x 12.00 in.

CUBE: 1.47 Ft. WT: 11.00 lbs. Quantity: 1 pcs.

### **UNIT DIMENSIONS**

SIZE: 11.00 x 18.50 x 11.25 in.

CUBE: 1.33 Ft. WT: 10.00 lbs.

# Cuisinart®

## Electric Fondue Set

- 1000 watts of power
- 3-qt. (2.8 L) stainless steel bowl with nonstick interior
- Brushed stainless steel housing
- Adjustable electric thermostat offers a wide range of temperature settings
- Includes eight individual fondue forks and stainless steel fork ring
- Fondue set is dishwasher safe excluding adjustable temperature control probe
- Limited 3-year warranty

**MODEL: CFO-3SSC**



### MASTER CARTON

SIZE: 14.30 x 10.30 x 14.80 in.  
CUBE: 1.26 Ft. WT: 11.60 lbs. Quantity: 2 pcs.

### UNIT DIMENSIONS

SIZE: 9.50 x 13.80 x 7.30 in.  
CUBE: 0.55 Ft. WT: 5.00 lbs.

# Cuisinart®



## Deluxe Stainless Steel Can Opener

- Maximum stability, heavy construction and extrawide base
- Opens cans without tipping
- Brushed stainless steel housing
- Power Cut™ blade and magnetic lid holder on a removable arm for easy clean-up
- Limited 3-year warranty

**MODEL: SCO-60C**

### MASTER CARTON

SIZE: 11.75 x 6.50 x 11.75 in.  
CUBE: 0.52 Ft. WT: 9.60 lbs. Quantity: 2 pcs.

### UNIT DIMENSIONS

SIZE: 5.75 x 6.00 x 10.75 in.  
CUBE: 0.22 Ft. WT: 4.40 lbs.

# Cuisinart®



## Frozen Yogurt – Ice Cream & Sorbet Maker

- Makes up to 1-1/2 quarts (1.4 l)
- Frozen treats in as little as 20 minutes
- Double-insulated freezer bowl
- Limited 6 month warranty

**MODEL: ICE-21C**

### **MASTER CARTON**

SIZE: 21.75 x 16.00 x 11.25 in.  
CUBE: 2.30 Ft. WT: 21.30 lbs. Quantity: 2 pcs.

### **UNIT DIMENSIONS**

SIZE: 10.75 x 10.75 x 16.00 in.  
CUBE: 1.07 Ft. WT: 10.00 lbs.



# Cuisinart®



## Pure Indulgence™ Frozen Yogurt-Ice Cream & Sorbet Maker

- Makes up to 2 quarts (1.9 L)
- Frozen treats in as little as 20 minutes
- Brushed metal housing
- Double insulated freezer bowl
- Large ingredient spout for adding mix-ins
- Limited 3-year warranty

**MODEL: ICE-30WNC**

### MASTER CARTON

SIZE: 21.30 x 11.50 x 17.00 in.  
CUBE: 2.41 Ft. WT: 27.20 lbs. Quantity: 2 pcs.

### UNIT DIMENSIONS

SIZE: 10.50 x 11.00 x 16.00 in.  
CUBE: 1.07 Ft. WT: 12.80 lbs.

# Cuisinart®



## **Gelato, Frozen Yogurt, Ice Cream & Sorbet Maker**

- Makes up to 2 quarts (1.9 L)
- Electronic touchpad controls
- Brushed metal housing
- Three pre-programmed settings and LCD display with auto-shutoff
- Double insulated freezer bowl
- Ingredient spout with integrated measuring cup
- Limited 3-year warranty

**MODEL: ICE-70C**

### **MASTER CARTON**

SIZE: 22.50 x 12.75 x 18.25 in.  
CUBE: 3.00 Ft. WT: 29.00 lbs. Quantity: 2 pcs.

### **UNIT DIMENSIONS**

SIZE: 10.75 x 12.00 x 17.00 in.  
CUBE: 1.27 Ft. WT: 13.60 lbs.

Total Vacuum Sealer category  
is reported at **\$8.7M**

Trending up **59%** YTD

Factors that are likely contributing to  
the category growth:

- . Increase need for **food preservation**
- . **Stocking up** on essentials / kitchen favourites
- . Rise in **meal preparation** and **at-home cooking**



**Cuisinart®**

KITCHEN ELECTRICS

**VACUUM SEALER**

\*Source: NPD Market Data

# Cuisinart®

## One-Touch Vacuum Food Sealer



- Simple one-touch operation automatically vacuums out air and seals bag
- Dry & Moist Food Function to choose the best bag seal time for the specific type of food you are sealing
- Delicate food sealing functionality
- Sleek and compact design
- Easy to use and store
- Includes two bonus vacuum seal rolls: One 8.6 in. x 20' roll (22 cm x 6 m) & One 11 in. x 20' roll (28 cm x 6 m)

**MODEL: VS-200C**

### **MASTER CARTON**

SIZE: 17.9 x 4.5 x 9.4 in.

CUBE: 0.438 Ft. WT: 5.7 lbs. Quantity: 1 pcs.

### **UNIT DIMENSIONS**

SIZE: 17.7 x 3.9 x 8.6 in.

CUBE: 0.343 Ft. WT: 4.6 lbs.

# Cuisinart®

---

## Professional Vacuum Food Sealer

---



*Repetitive use for more than 100 seals!*

- Functions: Vacuum Seal, Seal, Pulse
- Food settings: Dry / Moist
- Commercial-style design
- Easy lock lever for convenient operation
- LED progress indicator
- Canister feature for use with 0.7L (24 oz) canister included
- Marinade feature
- Integrated drip tray
- Convenient Roll storage & Built-in bag cutter
- (2) Vacuum Seal Rolls included
- Compatible with existing Vacuum Seal rolls: (VS-112C & VS-82C)
- Limited 3 year warranty

MODEL: VS-300C

# Cuisinart®



## **Vacuum Bag Rolls (28cm x 6.1m)**

- Two 11 in. x 20' rolls (28cm x 6.1m) seal to make bags any size you want

**MODEL: VSB-112C**

### **MASTER CARTON**

SIZE: 11.024 x 8.858 x 12.008 in.

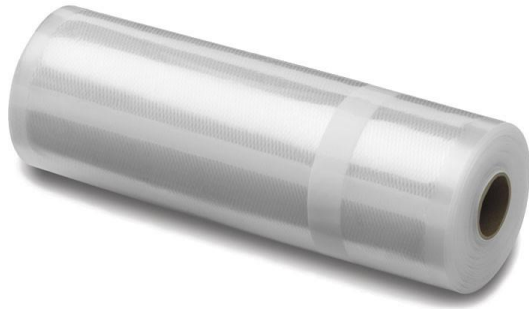
CUBE: 0.678 Ft. WT: 10.86 lbs. Quantity: 6 pcs.

### **UNIT DIMENSIONS**

SIZE: 2.75 x 5.25 x 11.375 in.

CUBE: 0.095 Ft. WT: 2.03 lbs.

# Cuisinart®



## **Vacuum Bag Rolls (20cm x 6.1m)**

- Two 8 in. x 20' rolls (20cm x 6.1m) seal to make bags any size you want

**MODEL: VSB-82C**

### **MASTER CARTON**

SIZE: 11.024 x 8.661 x 9.055 in.  
CUBE: 0.500 Ft. WT: 9.00 lbs. Quantity: 6 pcs.

### **UNIT DIMENSIONS**

SIZE: 2.75 x 5.25 x 8.375 in.  
CUBE: 0.069 Ft. WT: 1.20 lbs.

# Cuisinart®



## EasyPop® Popcorn Maker

- Pops up to 16 cups (4 L) of popcorn
- The motorized stirring arm makes sure that just one tablespoon of oil evenly coats all the kernels
- Enjoy popcorn with less fat
- The nonstick popping plate is removable
- Popping plate, bowl cap, and popping/serving bowl are dishwasher safe
- Limited 3-year warranty

**MODEL: CPM-700C**

### MASTER CARTON

SIZE: 22.50 x 22.75 x 15.50 in.

CUBE: 4.59 Ft. WT: 27.60 lbs. Quantity: 4 pcs.

### UNIT DIMENSIONS

SIZE: 11.25 x 10.75 x 14.50 in.

CUBE: 1.02 Ft. WT: 6.20 lbs.



# Cuisinart®



## Classic-Style Popcorn Maker

- 500 watts of power
- Holds 4 oz. (113 g) of kernels – pops up to 10 cups (2.36 L) of popcorn
- Nonstick kettle and door are removable for quick cleanup
- Automatic stirrer keeps kernels moving for perfectly popped popcorn
- Limited 3-year warranty

**MODEL: CPM-28C**

### **MASTER CARTON**

SIZE: 24.50 x 12.25 x 22.50 in.  
CUBE: 3.91 Ft. WT: 22.40 lbs. Quantity: 2 pcs.

### **UNIT DIMENSIONS**

SIZE: 11.75 x 11.75 x 21.88 in.  
CUBE: 1.75 Ft. WT: 10.10 lbs.

# Cuisinart®



## EasyPop® Hot Air Popcorn Maker

- Makes up to 15 cups (3.5 L) of popcorn in under 3 minutes
- Simply add kernels to popping chamber. Hot air pops crisp, fluffy, oil-free popcorn
- Convenient measuring/butter cup sits in top of the popping chute; use to measure kernels for popping and to melt butter for topping
- Easy on/off control
- Limited 3-year warranty

**MODEL: CPM-100EC**

### MASTER CARTON

SIZE: 24.50 x 15.25 x 12.50 in.  
CUBE: 2.70 Ft. WT: 15.10 lbs. Quantity: 4 pcs.

### UNIT DIMENSIONS

SIZE: 7.25 x 12.00 x 11.75 in.

CUBE: 0.59 Ft. WT: 3.30 lbs.



**Cuisinart®**

KITCHEN ELECTRICS

**HAND MIXERS**

# Cuisinart®

---



## Power Advantage™ 3-Speed Hand Mixer

---

- 200-Watt DC Motor
- 3 mixing speeds
- SmoothStart® feature eliminates splattering
- Easy-to-use speed control and beater eject lever
- Unique center cord rotates for right or left-handed use
- Heel rest allows mixer to rest upright on countertop
- Easy-Clean beaters: designed with no center post to prevent ingredients from clogging up beaters
- Limited 3 year warranty

MODEL: HM-3MTC

CASE PACK: 4

# Cuisinart®

---



## QuickPrep® Hand Blender

---

- Powerful motor blends, mixes, whisks, and purées quickly and quietly
- 250 Watts of Power
- Includes 3-Cup Measuring Cup & Whisk
- Single-Hand Use
- Easy On/Off and Lock/Unlock functions
- Ultra-Durable Stainless Steel Shaft
- Ergonomic Design: Contoured for easy handling and control
- Safety Feature: Convenient safety lock on handle
- Limited 3 year warranty

MODEL: CHB-60MTC

CASE PACK: 2

# Cuisinart®

---



## 3-Cup Mini Chopper

---

- Powerful chopper & grinder
- 3-Cup (750 ml) transparent bowl with handle
- Chop or grind at the touch of a button
- Exclusive auto-reversing SmartPower™ Blade feature
- Touchpad controls are easy to use and easy to clean
- Dishwasher-safe parts
- Limited 3 year warranty

MODEL: DLC-2AMTC  
CASE PACK: 2

# Cuisinart®



## Elite Collection® 4-Cup (1 L) Chopper/Grinder - Black

- 250 watts powers through small food prep tasks
- Auto-reversing Smartpower® blade
- Bladelock system locks in place for easy pouring after processing
- Limited 18-month warranty

**MODEL: CH-4BKC**

### **MASTER CARTON**

SIZE: 17.25 x 11.75 x 10.50 in.

CUBE: 1.23 Ft. WT: 16.80 lbs. Quantity: 4 pcs.

### **UNIT DIMENSIONS**

SIZE: 5.75 x 8.50 x 10.00 in.

CUBE: 0.28 Ft. WT: 3.30 lbs.

# Cuisinart®



## Elite Collection® 4-Cup (1 L) Chopper/Grinder - Die Cast

- 250 watts powers through small food prep tasks
- Auto-reversing Smartpower® blade
- Bladelock system locks in place for easy pouring after processing
- Limited 18-month warranty

**MODEL: CH-4DCC**

### **MASTER CARTON**

SIZE: 17.25 x 11.75 x 10.50 in.  
CUBE: 1.23 Ft. WT: 16.80 lbs. Quantity: 4 pcs.

### **UNIT DIMENSIONS**

SIZE: 5.75 x 8.50 x 10.00 in.  
CUBE: 0.28 Ft. WT: 4.00 lbs.



# Cuisinart®



## **Mini-Prep® Plus 3-Cup (0.7 L) Chopper/Grinder - White**

- Exclusive Smartpower® blade to purée baby food, chop herbs and grind spices
- 3-cup (750 ml) work bowl - ideal for many tasks, and small enough to keep on the counter
- Handle makes it easy to manage
- Limited 18-month warranty

**MODEL: DLC-2AC**

### **MASTER CARTON**

SIZE: 11.50 x 8.80 x 10.30 in.

CUBE: 0.60 Ft. WT: 7.00 lbs. Quantity: 2 pcs.

### **UNIT DIMENSIONS**

SIZE: 5.50 x 8.30 x 9.80 in.

CUBE: 0.26 Ft. WT: 3.00 lbs.

# Cuisinart®

---

## Power Advantage® Deluxe 8-Speed Hand Mixer with Blending Attachment

---



- Extra outlet for blending and chopping attachments – blending shaft attachment included
- 250 watts of power with automatic feedback / DC motor
- SmoothStart® feature eliminates splattering
- One-step power switch with LED speed display
- Easy-to-use speed control and beater eject lever
- Soft grip handle for maximum comfort
- Unique center cord – freely rotates for right or left-handed use
- Easy-Clean Beaters: designed with no center post to prevent ingredients from clogging up beaters
- **Includes balloon whisk and dough hooks**
- **Includes Bonus Canvas storage pouch**
- Limited 3 year warranty

MODEL: HM-8GRC

# Cuisinart®

---

## Power Advantage™ 6-Speed Hand Mixer

---



- 250-Watt DC Motor
- 6 mixing speeds
- Easy-to-use speed control and beater eject lever
- Unique center cord rotates for right or left-handed use
- Soft grip handle for maximum comfort
- Heel rest allows mixer to rest upright on countertop
- Easy-Clean beaters are designed with no center post to prevent ingredients from clogging up beaters
- Limited 3 year warranty

MODEL: HM-6C

# Cuisinart®



## **Power Advantage® 5-Speed Hand Mixer**

- 220 watts of power
- 5 mixing speeds
- A balanced handle and rotating swivel cord makes mixing comfortable for right or left-handed users
- Limited 3-year warranty

**MODEL: HM-50C**

### **MASTER CARTON**

SIZE: 8.92 x 8.93 x 9.87 in.  
CUBE: 0.46 Ft. WT: 6.90 lbs. Quantity: 2 pcs.

### **UNIT DIMENSIONS**

SIZE: 4.32 x 8.34 x 9.20 in.  
CUBE: 0.19 Ft. WT: 3.20 lbs.

# Cuisinart®



## **Power Advantage® 7-Speed Hand Mixer - Black**

- 220 watts of power
- 7 mixing speeds
- Digital touchpad & LED display
- Smoothstart® feature ultra-slow speed option eliminates splatters
- Includes: chef's whisk
- Limited 3-year warranty

**MODEL: HM-70BKC**

### **MASTER CARTON**

SIZE: 9.00 x 8.60 x 9.40 in.  
CUBE: 0.42 Ft. WT: 6.90 lbs. Quantity: 2 pcs.

### **UNIT DIMENSIONS**

SIZE: 4.25 x 8.25 x 9.00 in.  
CUBE: 0.18 Ft. WT: 3.30 lbs.

# Cuisinart®



## **Power Advantage® 7-Speed Hand Mixer - White**

- 220 watts of power
- 7 mixing speeds
- Digital touchpad & LED display
- Smoothstart® feature ultra-slow speed option eliminates splatters
- Includes: chef's whisk
- Limited 3-year warranty

**MODEL: HM-70C**

### **MASTER CARTON**

SIZE: 9.00 x 8.60 x 9.40 in.  
CUBE: 0.42 Ft. WT: 6.90 lbs. Quantity: 2 pcs.

### **UNIT DIMENSIONS**

SIZE: 4.25 x 8.25 x 9.00 in.  
CUBE: 0.18 Ft. WT: 3.30 lbs.

# Cuisinart®



## **Power Advantage® 5-Speed Hand Mixer - Black**

- 220 watts of power
- 5 mixing speeds
- A balanced handle and rotating swivel cord makes mixing comfortable for right or left-handed users
- Limited 3 year warranty

**MODEL: HM-50BKC**

### **MASTER CARTON**

SIZE: 8.92 x 8.93 x 9.87 in.  
CUBE: 0.46 Ft. WT: 6.90 lbs. Quantity: 2 pcs.

### **UNIT DIMENSIONS**

SIZE: 4.32 x 8.34 x 9.20 in.  
CUBE: 0.19 Ft. WT: 3.20 lbs.



# COUNTERTOP COOKING

Cuisinart®



# Cuisinart®

## Griddler®

- Five cooking options in one: contact grill, panini press, full grill, full griddle, and half grill/half griddle
- Removable, reversible and non-stick plates are dishwasher safe
- Hinged floating cover adjusts to thickness of food
- Sturdy panini-style handle with hinged floating cover adjusts to thickness of food
- Selector knob to choose grill or griddle function
- Adjustable temperature controls for grill or griddle
- Brushed stainless steel housing
- Integrated drip tray
- Limited 3-year warranty

**MODEL: CGR-4NEC**



### MASTER CARTON

SIZE: 18.50 x 17.00 x 14.50 in.

CUBE: 2.64 Ft. WT: 27.00 lbs. Quantity: 2 pcs.

### UNIT DIMENSIONS

SIZE: 9.00 x 16.00 x 13.75 in.

CUBE: 1.15 Ft. WT: 12.60 lbs.

# Cuisinart®

## Griddler® Deluxe



- Six cooking options in one: contact grill, panini press, full griddle, full grill, half grill/half griddle, top melt
- Removable, reversible and non-stick plates are dishwasher safe
- Dual-zone temperature control
- Sear function - can sear at 500°F for up to two minutes at a time
- Adjustable top cover with 6 presets to top melt and lock for storage
- Large grilling surface: 240 square inches open
- Brushed stainless steel housing
- Integrated drip tray
- Limited 3-year warranty

**MODEL: GR-150C**

### MASTER CARTON

SIZE: 20.50 x 19.00 x 18.50 in.  
CUBE: 4.17 Ft. WT: 35.70 lbs. Quantity: 2 pcs.

### UNIT DIMENSIONS

SIZE: 10.00 x 18.25 x 16.75 in.  
CUBE: 1.77 Ft. WT: 16.50 lbs.

# Cuisinart®

## Griddler® Five

- Five cooking options in one: contact grill, panini press, full grill, full griddle, and half grill/half griddle
- Sleek and contemporary design
- LCD display
- Removable, reversible and non-stick plates are dishwasher safe
- User-friendly digital controls
- Brushed stainless steel housing
- Stainless steel control panel
- Limited 3-year warranty

**MODEL: GR-5BC**



### MASTER CARTON

SIZE: 18.25 x 17.00 x 14.50 in.  
CUBE: 2.60 Ft. WT: 27.00 lbs. Quantity: 2 pcs.

### UNIT DIMENSIONS

SIZE: 8.50 x 16.00 x 13.75 in.  
CUBE: 1.08 Ft. WT: 12.60 lbs.

# Cuisinart®

## Smokeless Contact Griddler



- Smoke-less Mode features include: • Preset for food groups include beef, poultry, fish and pork • Fold out front foot extension and additional top plate position for grease drainage • Newly designed plates for improved grease management
- LCD Display and Digital Controls
- Adjustable temperatures from 175-425°F plus a Sear Function
- DuoControl™ Heating Advantage- provides independent temperature control for upper and lower plates
- Smoke-Less grill, contact grill, panini press, full grill, full griddle, and half grill/half griddle
- Removable and reversible dishwasher-safe nonstick cooking plates

**MODEL: GR-6SC**

### **MASTER CARTON**

SIZE: 9.5 x 15 x 14.6 in.

CUBE: 1.203 Ft. WT: 14.5 lbs. Quantity: 1 pcs.

### **UNIT DIMENSIONS**

SIZE: 9.25 x 14.5 x 14 in.

CUBE: 1.086 Ft. WT: 13.95 lbs.



# Cuisinart®



## Griddler® Waffle Plates

- Bakes 4 authentic belgian waffles with deep pockets
- Plates fit Griddler® models: for use with CGR-4NC series and GR-5C series
- Non-stick coating for quick waffle release
- Dishwasher safe
- Limited 1-year warranty

**MODEL: CGR-WAFPC**

### MASTER CARTON

SIZE: 13.25 x 10.25 x 11.50 in.  
CUBE: 0.90 Ft. WT: 12.20 lbs. Quantity: 4 pcs.

### UNIT DIMENSIONS

SIZE: 2.50 x 11.50 x 10.75 in.  
CUBE: 0.18 Ft. WT: 2.90 lbs.

# Cuisinart®



## Classic Round Waffle Maker

- Brushed stainless steel cover
- 5 setting browning control
- Non-stick baking plates wipe clean with a damp cloth
- The cord wraps under the base side
- Limited 3-year warranty

**MODEL: WMR-CAC**

### **MASTER CARTON**

SIZE: 17.50 x 9.25 x 11.50 in.  
CUBE: 1.08 Ft. WT: 19.40 lbs. Quantity: 4 pcs.

### **UNIT DIMENSIONS**

SIZE: 4.25 x 8.50 x 10.75 in.  
CUBE: 0.23 Ft. WT: 4.60 lbs.

# Cuisinart®

## Vertical Waffle Maker

- Unique design ensures no batter leakage
- Vertical advantage requires less counter space, easy to store
- Uniform waffle thickness and colour
- Brushed stainless steel cover
- Ready to bake/ready to eat indicator light
- Heats fast and cooks fast, for perfect results
- Bonus measuring cup included ensures a perfect fill
- Limited 3-year warranty

**MODEL: WAF-V100C**



### **MASTER CARTON**

SIZE: 16.50 x 12.25 x 14.50 in.

CUBE: 1.70 Ft. WT: 17.22 lbs. Quantity: 2 pcs.

### **UNIT DIMENSIONS**

SIZE: 8.00 x 11.75 x 13.50 in.

CUBE: 0.73 Ft. WT: 7.90 lbs.



# Cuisinart®



## 4-Slice Belgian Waffle Maker - Square

- Bakes 4 belgian waffles at a time
- Non-stick plates deliver even heat and easily wipe clean after use
- Brushed stainless steel cover
- Five-setting browning control
- Indicator lights
- Cool touch handle makes baking safe and easy
- Limited 3-year warranty

**MODEL: WAF-150EC**

### **MASTER CARTON**

SIZE: 14.75 x 13.25 x 17.50 in.

CUBE: 1.98 Ft. WT: 21.10 lbs. Quantity: 2 pcs.

### **UNIT DIMENSIONS**

SIZE: 7.00 x 12.75 x 16.25 in.

CUBE: 0.84 Ft. WT: 9.58 lbs.

# Cuisinart®

## 4-Slice Belgian Waffle Maker - Round

- Non-stick baking plates have deep pockets for belgian-style waffles
- Brushed stainless steel cover
- Temperature dial offers six browning levels so every waffle is baked to your liking
- Indicator lights
- Audible ready tone
- Limited 3-year warranty

**MODEL: WAF-200C**



### **MASTER CARTON**

SIZE: 15.00 x 11.25 x 14.50 in.  
CUBE: 1.42 Ft. WT: 14.08 lbs. Quantity: 2 pcs.

### **UNIT DIMENSIONS**

SIZE: 7.25 x 10.50 x 13.75 in.  
CUBE: 0.61 Ft. WT: 6.42 lbs.

# Cuisinart®



## 4-Slice Belgian Waffle Maker with Pancake Plate

- Four belgian waffles with deep pockets
- Brushed stainless steel cover
- Four pancake moulds ensure that your pancakes are perfect. Also makes eggs, sausage and more
- Six browning levels
- Indicator lights
- Limited 3-year warranty

**MODEL: WAF-350C**

### MASTER CARTON

SIZE: 20.50 x 11.75 x 14.25 in.

CUBE: 1.99 Ft. WT: 22.00 lbs. Quantity: 2 pcs.

### UNIT DIMENSIONS

SIZE: 10.00 x 10.75 x 13.50 in.

CUBE: 0.84 Ft. WT: 10.20 lbs.

# Cuisinart®

## Breakfast Central™ Belgian Waffle/Omelette Maker

- Bakes an extra-thick 1 in. (25 mm) belgian waffle and an omelette or frittata at the same time
- Two LED lights and 3 audio beep tones signal that food is ready to serve
- Brushed stainless steel covers
- Rotates 180° to ensure evenly cooked omelettes and waffles
- Limited 3-year warranty

**MODEL: WAF-600C**



### MASTER CARTON

SIZE: 22.00 x 17.25 x 11.25 in.  
CUBE: 2.47 Ft. WT: 24.50 lbs. Quantity: 2 pcs.

### UNIT DIMENSIONS

SIZE: 10.75 x 16.75 x 10.38 in.  
CUBE: 1.08 Ft. WT: 11.00 lbs.

Total Microwave category is reported at **\$58M**

Trending **up 9%** YTD  
Cuisinart is coming out with a full range assortment which includes

**NEW INNOVATION:**

3 in 1 Microwave Air fryer Oven



**MICROWAVE & BAKE**  
three-cheese mac & cheese



**AIRFRY & MICROWAVE**  
chicken wings with buffalo sauce



**AIRFRY & MICROWAVE**  
cinnamon sugar burritos with rich, hot chocolate



**Cuisinart**<sup>®</sup>

KITCHEN ELECTRICS

**MICROWAVES**

\*Source: NPD Market Data

# Cuisinart®

---

## DIGITAL AIR FRYER OVEN

- 1800 watts of power
- Wide range of toaster oven functions: Bake, Broil, Pizza, Roast, Toast, Bagel, **Reheat, Warm, Dual Cook**
- **Low temperature setting to slow cook, braise and more**
- **Dedicated functions for Dehydrating and Proofing**
- AirFry function **and presets** take the guesswork out of frying wings, fries, nuggets, snacks and veggies
- More options to customize your cooking:
  - Wide temperature range: 80°F to 450°F
  - Adjustable time with preset ranges for each function
- 0.6 cu. ft. capacity – airfry up to 3 lb., toast 6 bagel halves, roast a 4 lb. chicken, or bake a 12" pizza
- Limited 3-Year Warranty

**MODEL: TOA-65C**

**COMPLETE VERSATILITY WITH  
13 BUILT-IN FUNCTIONS!**



# Cuisinart®

## Air Fryer Convection Oven



- 1800 watts of power
- Airfry right in oven, for “deep-fry” results with little or no oil
- 7 cooking functions include airfry, convection bake, convection broil, bake, broil, warm, toast
- Large 0.6 cubic foot capacity
- Adjustable thermostat, 60-minute timer, toast shade control, auto shutoff
- Easy clean non-stick interior
- Brushed stainless steel housing
- Limited 3-year warranty

**MODEL: TOA-60C**

### **MASTER CARTON**

SIZE: 21.13 x 20.13 x 19.00 in.  
CUBE: 4.68 Ft. WT: 28.58 lbs. Quantity: 1 pcs.

### **UNIT DIMENSIONS**

SIZE: 20.75 x 19.75 x 17.75 in.  
CUBE: 4.21 Ft. WT: 25.82 lbs.

# Cuisinart®

## Cuisinart Air Fryer



- Specially engineered motor fan and heater deliver powerful airflow and high heat for perfectly fried results
- Compact design, large capacity - fits easily on any kitchen countertop and airfries up to 2.5lbs of food
- Adjustable time ( 0 to 60 minutes ) and temperature ( warm up to 450°F ) guarantee endless meal possibilities
- Quiet operation - optimal performance with minimal noise
- Brushed stainless steel enhances any kitchen decor
- Viewing window to monitor progress as food cooks
- Nonstick interior and stainless steel wipe clean in seconds
- Includes: AirFry Basket and Baking Pan / Drip Tray

**MODEL: AFR-25C**

### **MASTER CARTON**

SIZE: 19.00 x 15.50 x 14.00 in.

CUBE: 2.385 Ft. WT: 16.00 lbs. Quantity: 1 pcs.

### **UNIT DIMENSIONS**

SIZE: 18.11 x 14.75 x 13.39 in.

CUBE: 2.069 Ft. WT: 15.40 lbs.



# Cuisinart®

## Toaster Oven Broiler

- Oven ON Indicator light will remain lit when oven is in use
- START/STOP Button Push the button to start function. Push again stop function in mid-cycle and shut off oven
- Oven Rack Oven rack slides out automatically when the door is opened, (When the rack is in the upper position)
- Slide-Out Crumb Tray the slide-out crumb tray comes already positioned in your oven. The crumb tray slides out from the bottom front of the Toaster Oven Broiler for easy cleaning
- Easy-Clean Interior the sides of the oven are coated, providing an easy-to-clean surface
- Baking Pan/Drip Pan Slides directly into the upper or lower positions
- Cord Storage takes up excess cord and keeps countertop neat

**MODEL: TOB-1010C**



### **MASTER CARTON**

SIZE: 19.10 x 17.10 x 12.00 in.

CUBE: 2.268 Ft. WT: 12.10 lbs. Quantity: 1 pcs.

### **UNIT DIMENSIONS**

SIZE: 16.80 x 15.20 x 9.00 in.

CUBE: 1.33 Ft. WT: 9.30 lbs.

# Cuisinart®

## Deluxe Convection Toaster Oven Broiler



- 1800 watts of power
- Large 0.6-cubic-foot capacity
- 9 cooking functions including convection and broil
- Blue backlit LCD digital display
- Easy-clean interior
- Brushed stainless steel housing
- Limited 3-year warranty

**MODEL: TOB-135NC**

### **MASTER CARTON**

SIZE: 20.25 x 17.25 x 11.75 in.  
CUBE: 2.38 Ft. WT: 19.60 lbs. Quantity: 1 pcs.

### **UNIT DIMENSIONS**

SIZE: 15.00 x 17.00 x 10.00 in.  
CUBE: 1.48 Ft. WT: 17.60 lbs.

# Cuisinart®

## Toaster Oven Broiler with Convection



- 1800 watts of power
- 0.6-cubic-foot capacity
- Convection technology
- 7 cooking functions
- Easy clean non-stick interior
- Brushed stainless steel housing
- Limited 2-year warranty

**MODEL: TOB-60N1EC**

### **MASTER CARTON**

SIZE: 20.25 x 17.25 x 11.75 in.  
CUBE: 2.38 Ft. WT: 16.90 lbs. Quantity: 1 pcs.

### **UNIT DIMENSIONS**

SIZE: 16.75 x 19.75 x 11.00 in.  
CUBE: 2.11 Ft. WT: 14.40 lbs.

# Cuisinart®

## Combo Steam + Convection Oven



- 1800 watts of power
- Unique steam bake and steam broil function
- Cooks up to 40% quicker than conventional ovens
- Specialized bread proofing technology
- Large 0.6 cubic foot capacity
- 9 cooking functions, including steam
- Steam clean feature
- Blue backlit LCD digital display
- Brushed stainless steel housing
- Limited 3-year warranty

**MODEL: CSO-300N1C**

### MASTER CARTON

SIZE: 22.75 x 18.25 x 14.50 in.

CUBE: 3.48 Ft. WT: 27.14 lbs. Quantity: 1 pcs.

### UNIT DIMENSIONS

SIZE: 17.50 x 22.25 x 13.50 in.

CUBE: 3.04 Ft. WT: 24.28 lbs.

# Cuisinart®

---

## 3 in 1 Microwave Airfryer Oven

---



- 3-in-1 -Microwave, AirFryer, Convection Oven with specially engineered heater/fan configuration for optimal results
- AirFry & Oven Functions: Adjustable Time and Temperature, Preset Options
- Microwave Functions: Preset Microwave Options, 11 Power Levels (0-10), Auto-Cook, Defrost by Time or Weight
- Sleek Touchpad controls with white LED Display
- Stainless steel interior will not absorb odors and is easy to clean
- Includes: Rotating Glass Tray, Airfry Basket & Bake/Drip Pan
- Convenient Child Lock Option
- Digital Oven Light to view your progress
- 0.6 cubic foot Capacity
- 1500 Watt AirFryer/Oven; 700 Watt Microwave Oven

MODEL: AMW-60C

# Cuisinart®



## Stainless Steel Microwave

- 1000 watts of power
- 1.0-cubic-foot capacity
- Stainless steel interior is odour-resistant and easy to clean
- Preset timing for 25 microwave and 5 reheat settings
- Limited 3-year warranty

**MODEL: CMW-100C**

### MASTER CARTON

SIZE: 26.00 x 21.00 x 18.00 in.  
CUBE: 5.70 Ft. WT: 40.80 lbs. Quantity: 1 pcs.

### UNIT DIMENSIONS

SIZE: 18.00 x 23.00 x 14.75 in.  
CUBE: 3.53 Ft. WT: 40.80 lbs.

# Cuisinart®

## Stainless Steel Microwave



- 700 watts of power
- 0,7 cubic-foot capacity
- Modern design with stainless steel accents, sleek touchpad control panel, and dark tinted glass window
- Easy auto-cook functions: Popcorn, Potato, Pizza, Frozen Veggie, Beverage, Reheat
- Defrost food by weight or time
- Memory function to save your favourite cooking options
- Limited 3 year Warranty

**MODEL: CMW-70C**

### **MASTER CARTON**

SIZE: 19.75 x 14.88 x 12.63 in.  
CUBE: 2.15 Ft. WT: 25.80 lbs. Quantity: 1 pcs.

### **UNIT DIMENSIONS**

SIZE: 14.25 x 19.38 x 11.38 in.  
CUBE: 2.15 Ft. WT: 25.80 lbs.