

ADULT ASSEMBLY REQUIRED



WARNING: Small Parts

Product contains small parts with potentially hazardous sharp points and sharp edges in the unassembled state. Keep unassembled parts away from children.



WARNING: Tipping Hazard

This product has been rigorously tested to meet all tipping safety standards; however, this product is **not meant** to be climbed on. Serious injury can occur with improper use.

- We recommend installing an anti-tip restraint
- Do not allow children to climb on or hang from this product
- Place product on flat, level surface only
- Do not place heavy objects on top of this product
- Follow age guidelines for this product



Assembly Instructions

1. Upon opening package, please inspect contents to make sure all parts and components are accounted for.
2. Place contents on padded or carpeted surface to avoid damage.
3. Please read assembly instructions carefully.

Use and Care

Use on level surfaces only, and routinely check hardware and tighten as necessary. Failure to maintain your new product may result in unsafe conditions for children.

We build our products with years of future play in mind, so to ensure a long lifespan for your product, surface clean only with a dry soft cloth. To clean small stains, use a slightly damp cloth and if necessary, a mild detergent. Wipe all spills immediately and avoid using any abrasive cleaning agents or scrubs, including ammonia or alcohol based formulas.

For more information on how to care for your new product, please visit www.miltonandgoose.com.

 MILTON & GOOSE

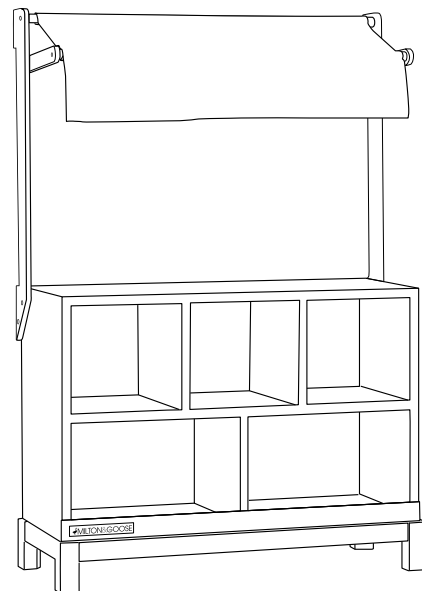
Market Stand with Canopy

Tools Required

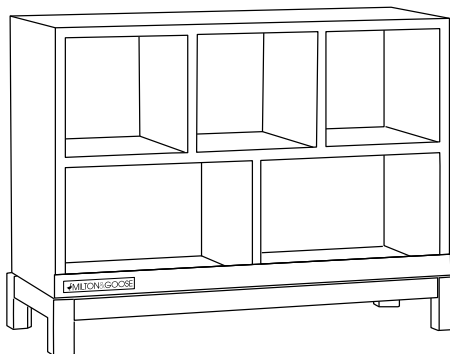
Screwdriver

Parts

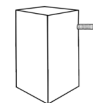
- 1 market stand (A)
- 4 legs (B)
- 4 wingnuts (C)
- 1 canopy (D)
- 1 short dowel (E)
- 1 long dowel (F)
- 2 arms (G)
- 2 braces (H)
- 4 hex screw (I)
- 6 washer head screw (J)
- 1 hex key (K)



A



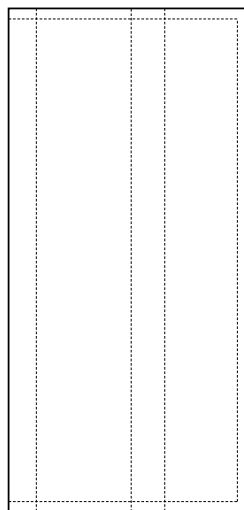
B
Qty 4



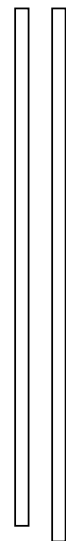
C
Qty 4



D



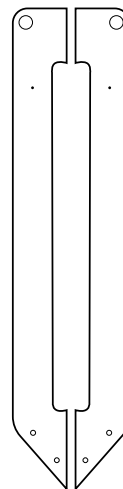
E F



G



H



I
Qty 4



J
Qty 6

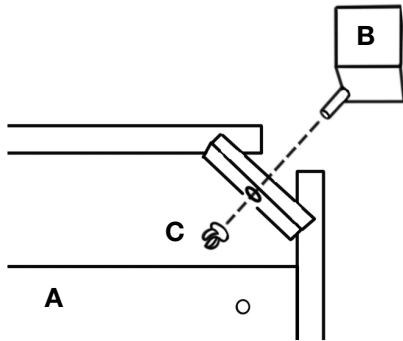


K
Qty 1



Step 1

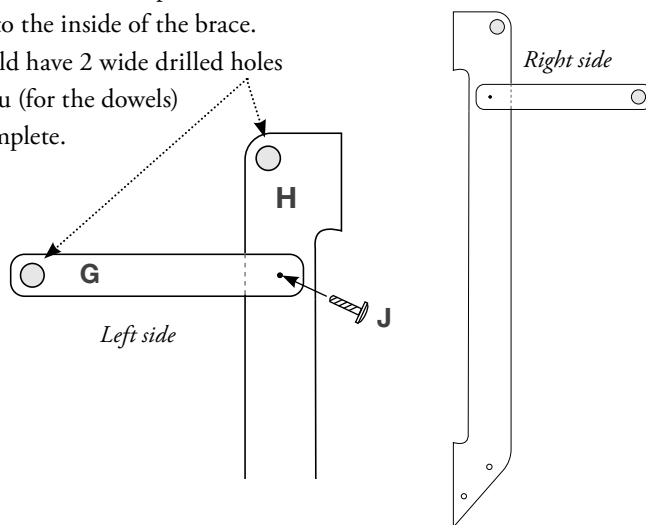
Attach 4 legs (B) to market stand (A) with wing nuts (C).
Turn wing nuts clockwise until tight and securely attached.



Step 2

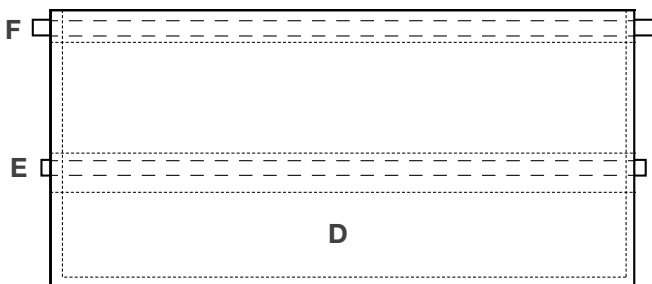
Attach arms (G) to braces (H) with washer head screws (J).

The braces are mirrored parts. The arm attaches to the inside of the brace.
You should have 2 wide drilled holes facing you (for the dowels) when complete.



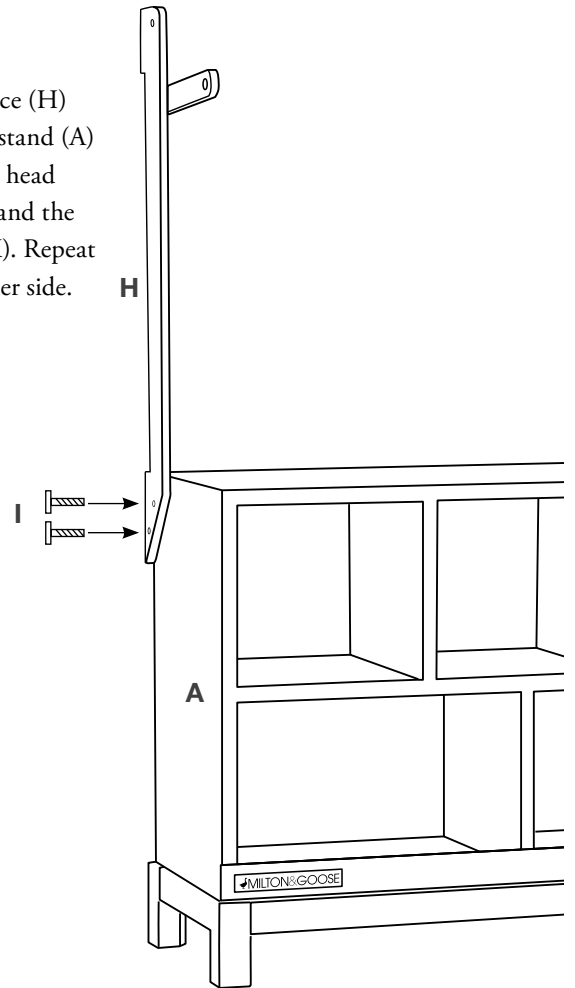
Step 3

Prepare the canopy: Place long dowel (F) through top pocket of the canopy and short dowel (E) through the lower pocket.



Step 4

Attach brace (H) to market stand (A) with 2 hex head screws (I) and the hex key (K). Repeat for the other side.



Step 5

Slip the long dowel (with canopy) into the drilled holes on each brace and the short dowel into the drilled holes on each arm. Secure with washer head screws.

