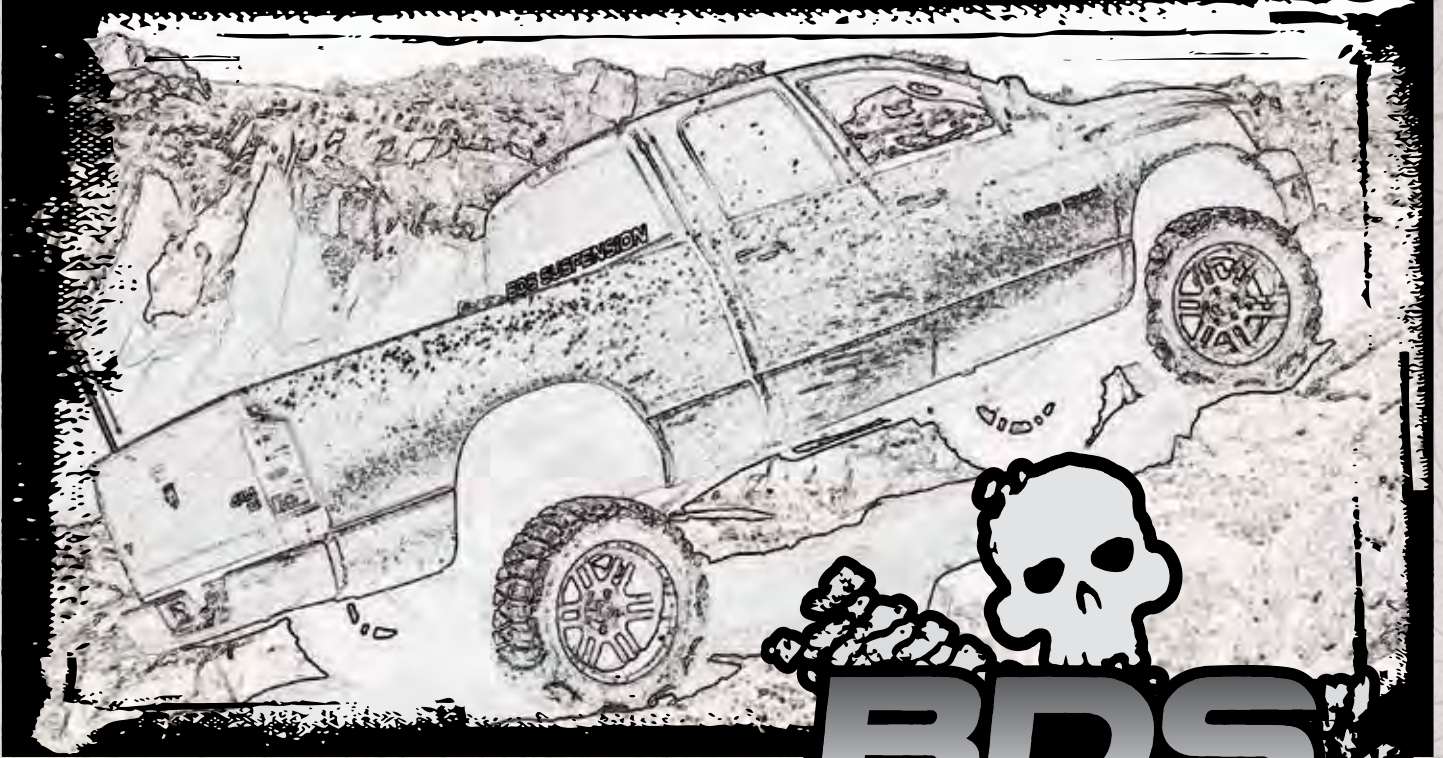
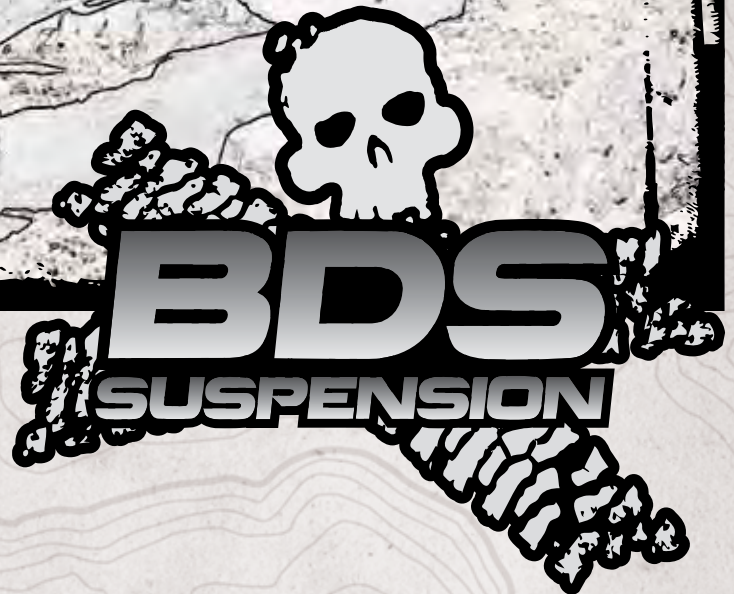


INSTALLATION GUIDE



Part#: 022624, 022402



HARDCORE LIMITED LIFETIME WARRANTY

4" & 6" High Clearance Suspension System

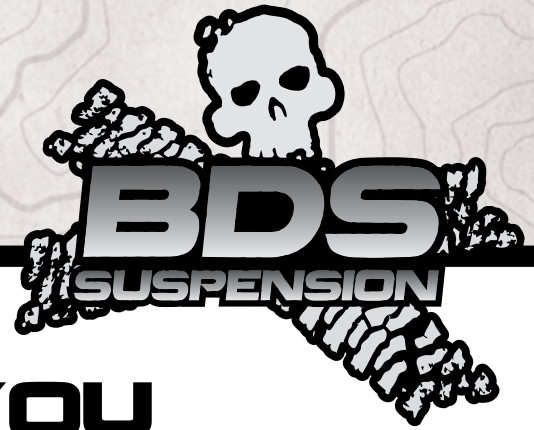
Dodge Ram 1500 4WD | 2012-2017

Rev. 020918

491 W. Garfield Ave., Coldwater, MI 49036 • Phone: 517-279-2135

E-mail: tech-bds@sporttruckusainc.com

Read And Understand All Instructions And Warnings Prior To Installation Of System And Operation Of Vehicle.



THANK YOU

Your truck is about to be fitted with the best suspension system on the market today. That means you will be driving the baddest looking truck in the neighborhood, and you'll have the warranty to ensure that it stays that way for years to come. Thank you for choosing BDS Suspension!

BEFORE YOU START

BDS Suspension Co. recommends this system be installed by a professional technician. In addition to these instructions, professional knowledge of disassembly/ reassembly procedures and post installation checks must be known.

FOR YOUR SAFETY

Certain BDS Suspension products are intended to improve off-road performance. Modifying your vehicle for off-road use may result in the vehicle handling differently than a factory equipped vehicle. Extreme care must be used to prevent loss of control or vehicle rollover. Failure to drive your modified vehicle safely may result in serious injury or death. BDS Suspension Co. does not recommend the combined use of suspension lifts, body lifts, or other lifting devices. You should never operate your modified vehicle under the influence of alcohol or drugs. Always drive your modified vehicle at reduced speeds to ensure your ability to control your vehicle under all driving conditions. Always wear your seat belt.

BEFORE INSTALLATION

- Special literature required: OE Service Manual for model/year of vehicle. Refer to manual for proper disassembly/reassembly procedures of OE and related components.
- Adhere to recommendations when replacement fasteners, retainers and keepers are called out in the OE manual.
- Larger rim and tire combinations may increase leverage on suspension, steering, and related components. When selecting combinations larger than OE, consider the additional stress you could be inducing on the OE and related components.
- Post suspension system vehicles may experience drive line vibrations. Angles may require tuning, slider on shaft may require replacement, shafts may need to be lengthened or trued, and U-joints may need to be replaced.
- Secure and properly block vehicle prior to installation of BDS Suspension components. Always wear safety glasses when using power tools.
- If installation is to be performed without a hoist, BDS Suspension Co. recommends rear alterations first.
- Due to payload options and initial ride height variances, the amount of lift is a base figure. Final ride height dimensions may vary in accordance to original vehicle attitude. Always measure the attitude prior to beginning installation.



Visit 560plus.com for more information.

TIRES AND WHEELS

<i>Tires</i>	<i>Wheel Size</i>	<i>Backspacing</i>
37" x12.50"	17x8	4.5"
37" x12.50"	18x9	5"
37" x12.50"	20x9	5"

Stock 17" wheels cannot be re-installed. Stock 20" can only be re-installed with the factory tire.

BEFORE YOU DRIVE

Check all fasteners for proper torque. Check to ensure for adequate clearance between all rotating, mobile, fixed, and heated members. Verify clearance between exhaust and brake lines, fuel lines, fuel tank, floor boards and wiring harness. Check steering gear for clearance. Test and inspect brake system.

Perform steering sweep to ensure front brake hoses have adequate slack and do not contact any rotating, mobile or heated members. Inspect rear brake hoses at full extension for adequate slack. Failure to perform hose check/ replacement may result in component failure. Longer replacement hoses, if needed can be purchased from a local parts supplier.

Perform head light check and adjustment.

Re-torque all fasteners after 500 miles. Always inspect fasteners and components during routine servicing.

CONTENTS OF YOUR KIT



022402 & 022624 Box Kit

Part #	Qty	Description
02242	1	Front Drive Shaft Spacer
01298B	1	HC Diff Skid Plate
02002ZP	4	M18-2.5 x 150 Class 10.9 Bolt
N18MPT	4	M18 x 2.5 Prevailing Torque Nut
01264	8	Square Washer
01296B	1	HC Rear Crossmember
02281	1	Front Brake Bracket (022402 only)
02282	1	Front Brake Bracket (022402 only)
768	1	Bolt Pack (022402 only)
099000	4	11.5in Nylon Cable Tie
02267B	2	4in Strut Spacer (022402 only)
911114	2	Sway Bar Link Extension
117300006	4	Large Stem Washer
01499	2	1/4in Spacer
342701	1	Loctite - 1ml
22531	2	Front Brake Line (022624 only)
5188	2	Snap In Brake Line Clip (022624 only)
CCW-03-050	4	Crush Washer (022624 only)
01274	2	Brake Line Bracket (022624 only)
01267B	2	6in Strut Spacer (022624 only)

022625 Box Kit

Part #	Qty	Description
01295B	1	HC Front Crossmember
02389B	1	Diff.Drop Bracket - PS
02278B	1	Diff. Drop Bracket - DS Front
02277B	1	Diff. Drop Bracket - DS Rear
01236B	1	Diff. Drop Bracket - DS Outer Front
6865833	1	CV Boot Clamp

022630 & 022631 Box Kit (13-17 models only)

Part #	Qty	Description
02230	1	Steering Knuckle - DS
02231	1	Steering Knuckle - PS
20277	2	Tie Rod End

022402 & 022624 Box Kit

660	1	Bolt Pack - Diff Hardware
	3	12mm-1.75 x 30mm bolt
	2	12mm-1.75 x 40mm bolt
	4	12mm-1.75 x 55mm bolt
	2	12mm-1.75 x 60mm bolt
	13	12mm flat washer
	4	12mm-1.75 prevailing torque nut
	3	1/2"-13 x 1-1/2" bolt
	4	1/2"-13 X 1-1/4" bolt
	3	1/2"-13 prevailing torque nut
	10	1/2" SAE thru-hardened washer
662	1	Bolt Pack- Main Hardware
	2	1/4"-20 x 1/2" bolt
	2	1/4"-20 prevailing torque nut
	4	1/4" SAE washer
	2	Wire Clip
	6	10mm-1.50 Prevailing torque nut
	6	10mm flat washer
	2	1/2"-13 x 1-1/4" bolt
	2	1/2"-13 prevailing torque nut
	4	1/2" SAE flat washer
	2	7/16"-14 Nylock nut
663	1	Bolt Pack - Driveshaft Spacer
	2	12mm-1.75mm x 45mm bolt
	2	12mm flat washer

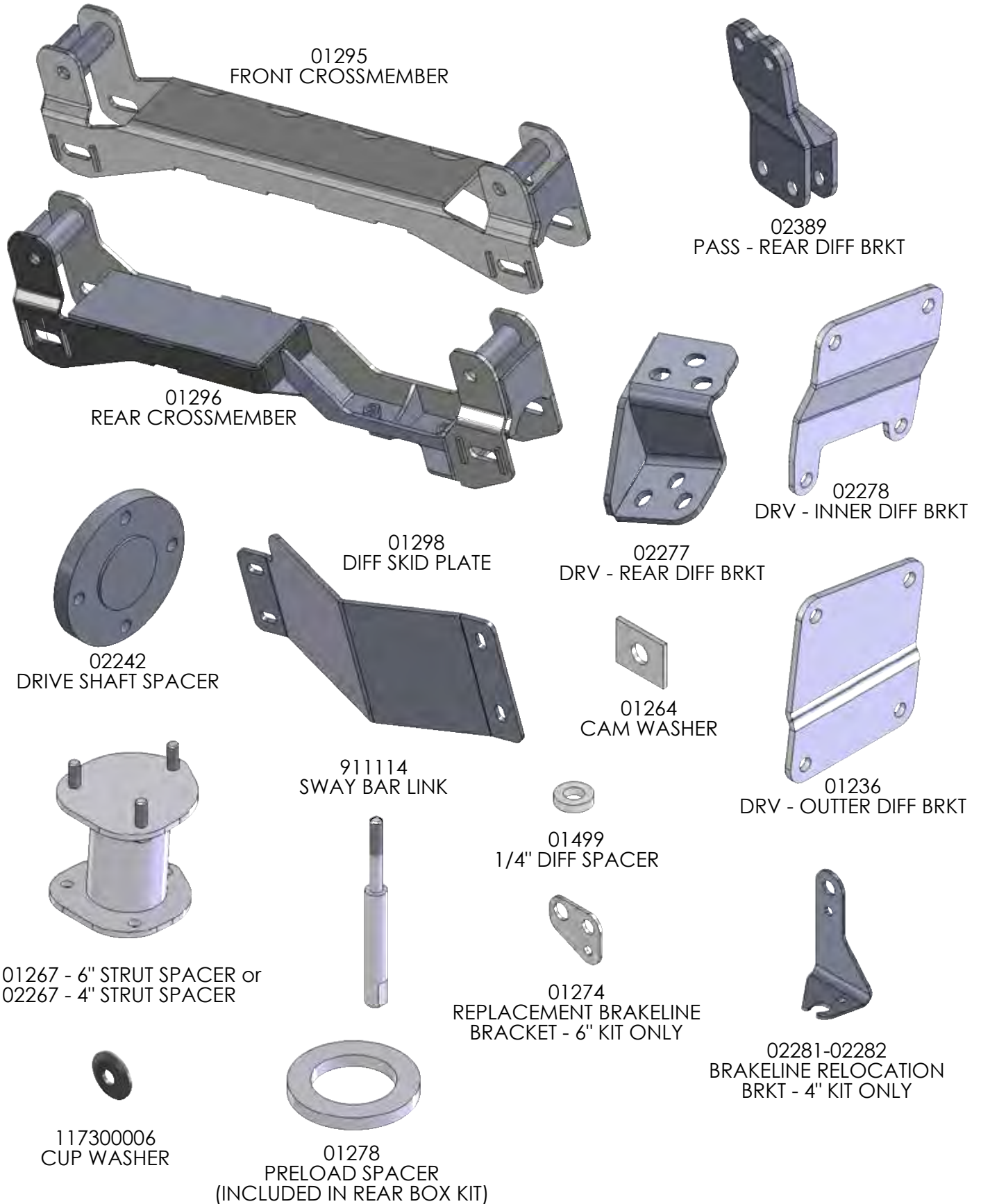
022620 & 022621 Box Kit (2012 models only)

Part #	Qty	Description
02230	1	Steering Knuckle - DS
02231	1	Steering Knuckle - PS
44066	2	Tie Rod End

022309/022509 Box Kit (09-12 Models Only)

Part #	Qty	Description
See instructions located in box kit		

RAM 1500 FRONT BOX KIT COMPONENTS



TROUBLESHOOTING INFORMATION FOR YOUR VEHICLE

1. These trucks vary from 1"-3" tail high from the factory. Measure your vehicle and install the correct rear box kit for your desired stance.
2. The rack and pinion steering system is extremely sensitive to an out of round or out of balance tire/wheel. The larger the tire and the less backsparing, the more sensitive the system becomes, causing minor steering wheel shimmy.
3. On some vehicles an exhaust modification will be required to clear the front driveshaft in its new, lower position.
4. Not recommended for AWD models
5. Will not fit adjustable air suspension equipped models.
6. 6" systems not recommend for TRX models due to additional lift height produced.

INSTALLATION INSTRUCTIONS

PRE-INSTALLATION MEASUREMENTS

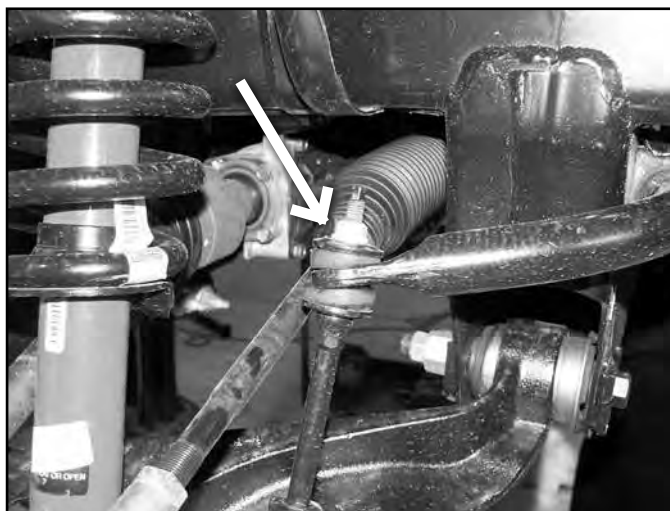
Measure from the center of the wheel up to the bottom edge of the wheel opening

LF _____ RF _____ LR _____ RR _____

FRONT INSTALLATION

1. Park the vehicle on a clean, flat surface and block the rear wheels for safety.
2. Raise the front of the vehicle and support with jack stands under the frame rails.
3. Remove the wheels.
4. Disconnect the sway bar links from the sway bar. Leave them attached to the lower control arm. (Fig 1).

FIGURE 1



5. Remove and discard the OE front skid plate, if equipped.
6. Disconnect the tie rod ends from the steering knuckles. Remove and retain the mounting nuts. Use the appropriate puller to separate the tie rod end from the steering knuckle. Take care not to damage the tie rod end.
7. Disconnect the ABS brake line at the frame. Remove it from any retaining clips.

8. Steps 9-14 are for 6 inch kit with replacement brakelines only: Steps 15-18 are for 4 inch kit, which includes brakeline drop brackets. If installing optional brakelines - follow steps 9-14.
9. Disconnect the driver's side front brake hose from the caliper. Retain the banjo bolt and discard the crush washers.
10. **6 inch kit only:** Disconnect the hard line from the brake hose fitting at the frame. Remove the hose fitting retaining bolt and remove the hose from the vehicle. Retain the hose fitting mounting bolt.
11. **6 inch kit only:** Attach the provided brake line relocation bracket (01274) to the frame where the original line mounted. Fasten the bracket with the OE fitting bolt through the original threaded hole and the corresponding small hole in the new bracket (Fig 2a). Align the other mounting hole in the bracket with the brake line hole in the frame and fasten with a 1/2" x 1-1/4" bolt, nut and 1/2" SAE washers (BP #662). Torque the OE bolt to 10 ft-lbs and the 1/2" bolt to 50 ft-lbs. Note: The third hole in the bracket should be hanging out past the edge of the frame.

FIGURE 2A



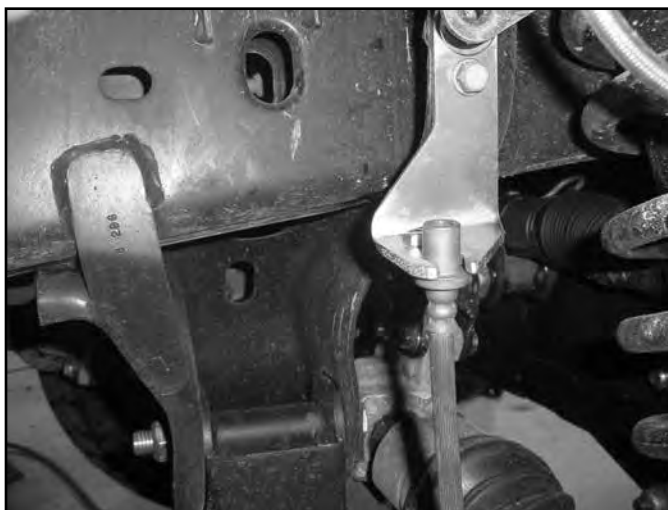
12. **6 inch kit only:** Route the new stainless steel brake line through the relocation bracket and attach it to the hard line. Tighten the fitting securely. Fasten the line to the bracket with the provided retaining clip.
13. **6 inch kit only:** Attach the opposite end of the new brake line to the caliper with the OE banjo bolt and one new crush washer on each side of the fitting. Torque the banjo bolt to 18 ft-lbs.
14. **6 inch kit only:** Repeat brake line installation on the passenger's side of the vehicle.
15. **4 inch kit only:** Disconnect the brakeline hardware from the strut tower and pull the brakeline through the mount. Cut a slot to allow the brakeline to be removed from the frame. If you do not wish to cut on the coil bucket, the line can be disconnected and reconnected after it is removed from the frame. If the line is disconnected the brakes must be bled at the end of the installation. (Fig 2b)

FIGURE 2B



16. **4 inch kit only:** Attach the provided brake line relocation bracket to the frame where the original line mounted. The brakeline bracket will offset towards the rear of the vehicle. Torque the factory bolt to 10 ft-lbs and the 1/2" bolt to 50 ft-lbs.
17. **4 inch kit only:** Carefully reform the hardline to gain additional length. Attach to the relocation bracket with 1/4" hardware (bolt pack #768). (Fig 2c)

FIGURE 2C



18. **4 inch kit only:** Repeat brake line relocation bracket installation on the passenger's side of the vehicle
19. Remove the brake caliper anchor bracket bolts and pull the caliper free from the steering knuckle and rotor. Hang the caliper securely out of the way. Retain caliper mounting hardware. Remove the brake rotor from the hub.



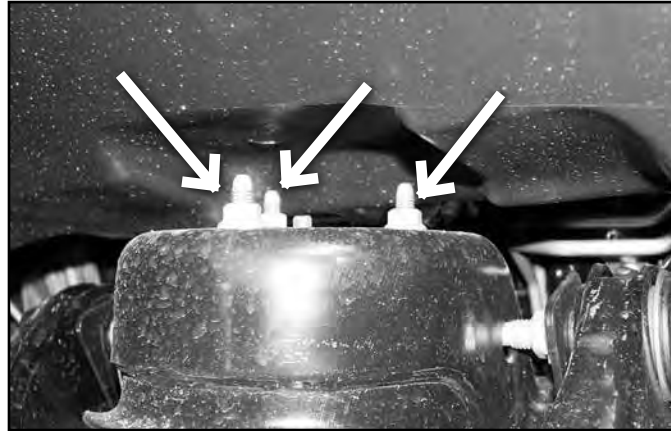
Tip Do not allow the brake caliper to hang from the brake hose.

20. Remove the hub axle nut. Retain nut.
21. Loosen but do not remove the lower control arm bolts.

22. Disconnect the CV axles from the differential by carefully prying CV out at the differential to disengage the internal retaining clip. Pry the shaft out just enough to release the clip and leave the axle on the differential at this time.
23. Support the lower control arm with a hydraulic jack. Remove the three strut-to-frame mounting nuts (Fig 3).

! Caution *DO NOT loosen the middle strut nut.*

FIGURE 3



24. Loosen the strut-to-lower control arm hardware (Fig 4). Remove the nut from the bolt and leave the bolt in place to temporarily retain the strut to the lower control arm. Retain the nut.

FIGURE 4



25. Remove the upper and lower ball joint nuts. Reinstall the nuts a few turns by hand. Separate the upper and lower ball joints from the steering knuckle using the appropriate puller. Take care not to damage the ball joint.
26. Remove the upper ball joint nut. Lower the jack enough to allow removal of the strut. Remove the lower strut bolt and remove the strut from the vehicle. Mark the strut from the appropriate side (driver's or passenger's). Retain mounting bolt and upper ball joint nuts.
27. Continue to lower the jack allowing the knuckle/CV axle and lower control arm to swing down. Slide the CV axle off of the differential. Remove the CV axle from hub.
28. Remove the lower ball joint nut and remove the knuckle from the lower control arm. Retain the lower ball joint nut.
29. Remove the three bolts mounting the hub bearing assembly to the OE steering knuckle. Retain the mounting bolts. Remove the hub assembly and dust shield from the knuckle. Note: It may be necessary to press the hub out of the knuckle as a result of excessive corrosion on some vehicles.
30. Install the hubs in the corresponding new knuckles (01230, 01231) and fasten with the stock mounting bolts (Fig 5). Index the hub so that the ABS line runs out the front side of the knuckle toward the steering arm. Use Loctite on the bolt threads and torque to 125 ft-lbs.

FIGURE 5



31. Remove the lower control arms from the frame. Retain hardware.
32. Make indexing marks on the front drive shaft and differential input flange for realignment later. Remove the four bolts and disconnect the drive shaft from the differential. Support the driveshaft to keep the CV boot from binding. Discard mounting bolts.



Tip Failure to support the driveshaft can lead to pinching the rubber boot at the CV joint which can damage the seal causing a leak and premature wear on the joint.

33. Remove the four bolts mounting the OE rear crossmember to the frame rails and remove the crossmember from the vehicle. Discard the crossmember and the hardware.
34. Using a jack, support the differential. Loosen and remove the two forward-most differential mounting bolts on the driver's side (Fig 6A). Loosen but do not remove the three rear driver's side bolts (Fig 7) and the two passenger's side bolts (Fig 8A). On the passenger's side, if equipped, remove the differential actuator cable bracket. It will not be reused. DIESEL MODELS - DRV Side: Diesel model vehicles have tighter clearance between the motor and front driver's side differential mount. It may be easier to remove the entire mount with the differential. If so, support the motor and remove the 2 motor mount bracket to differential bracket bolts as well as the main motor mount bolt (Fig 6B). Once the differential is removed, remove the bracket from the differential (Fig 6C) and reinstall in the vehicle and tighten hardware. DIESEL MODELS - PASS Side: There is a harmonic dampener attached to the passenger's side differential mount. Remove with the differential and save (Fig 8B).

FIGURE 6A

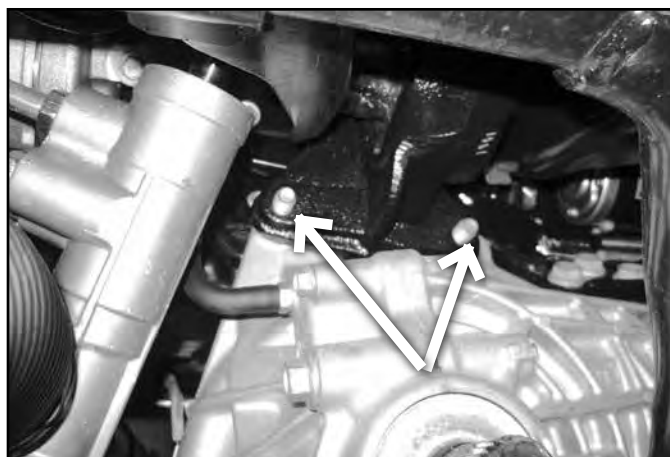


FIGURE 6B

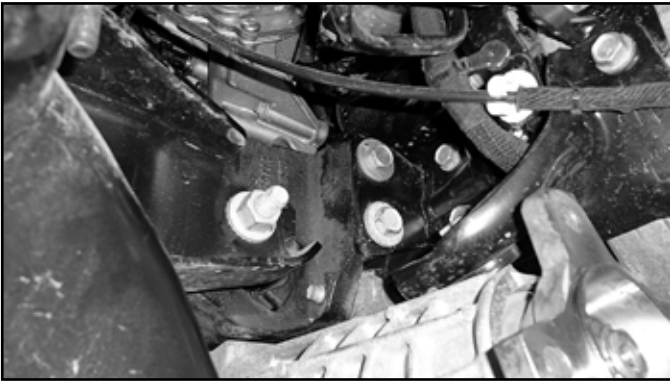


FIGURE 6C

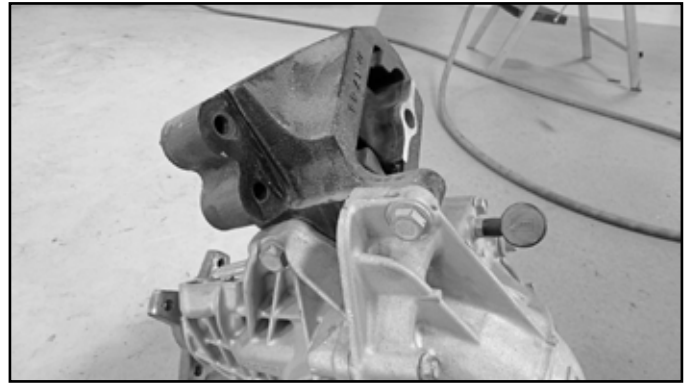


FIGURE 7

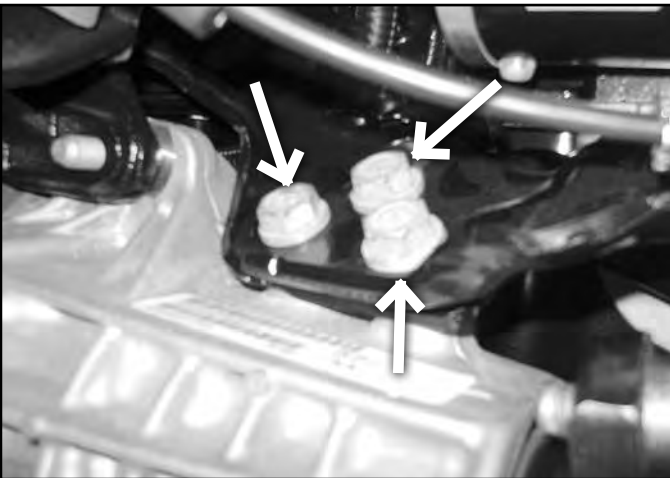


FIGURE 8A

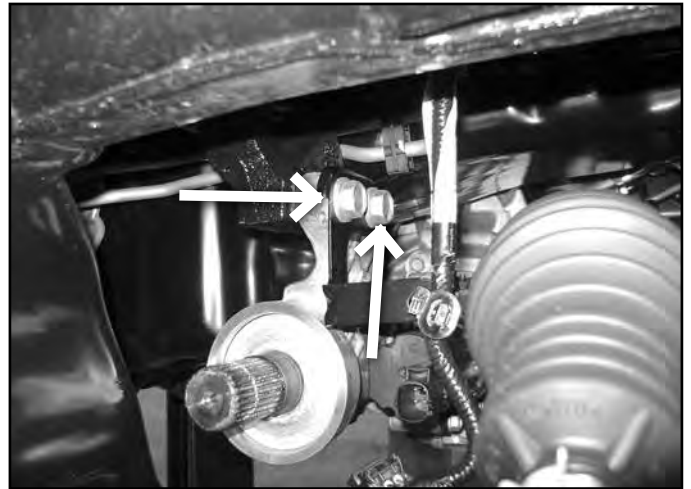


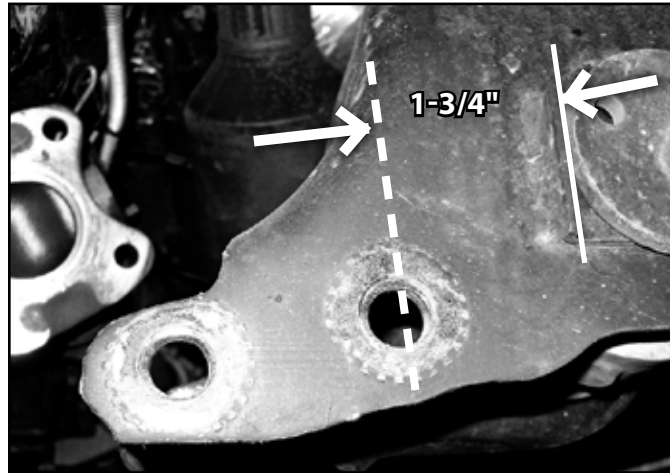
FIGURE 8B



35. With the differential securely supported, remove the remaining bolts and lower the differential from the vehicle.

36. The driver's side rear lower control arm pocket must be trimmed to provide clearance for the differential in its lowered position. Measure inward from the inside edge of the alignment cam slot 1-3/4" and mark. Repeat on the opposite side of the pocket. Make a continuous line connecting the two marks over the top edge of the pocket. Trim the pocket on the line with a sawzall or cut off wheel. Paint any exposed metal to prevent corrosion (Fig 9).

FIGURE 9



37. Install the provided passenger's side differential drop bracket (02389B) to the original frame mount with OE hardware. The brackets should be installed offset forward as shown (Fig 10). Leave hardware loose.

FIGURE 10



38. Install the two front driver's side differential drop brackets so that the bracket with the small offset (01236) is toward the outside of the vehicle (offsetting out) and the one with the bigger offset (02278) is on the inside (offsetting in). The brackets should taper down in height as they go toward the rear of the vehicle (for correction of the pinion angle). Fasten the brackets to the frame with two 12mm x 40mm bolts and washers into the factory threaded holes (BP #660). Leave hardware loose. (Fig. 11a / b)

FIGURE 11B



FIGURE 11A



39. Install the driver's side rear differential drop bracket (01238) to the frame with three 1/2" x 1-1/2" bolts and 1/2" SAE washers (BP #660). (Fig. 12) The bracket will have the gusset plate towards the front of the vehicle. Leave hardware loose.

FIGURE 12A

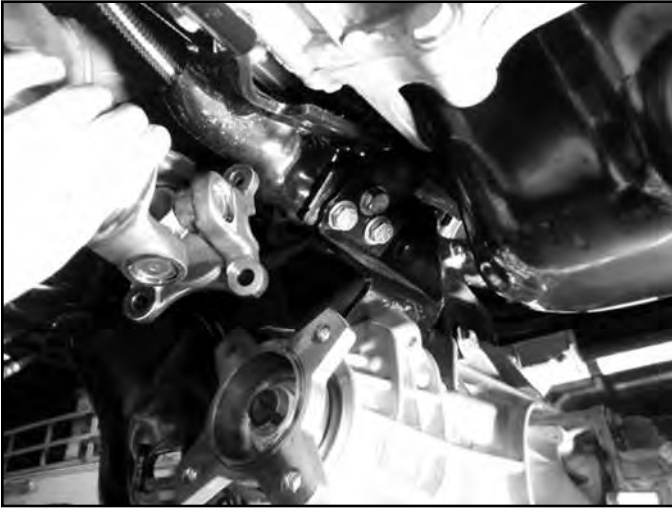
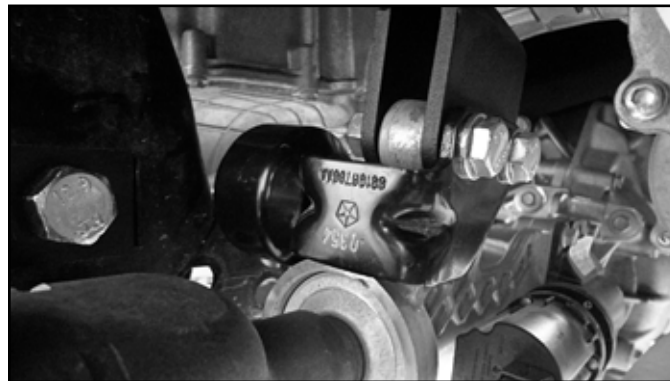


FIGURE 12B



FIGURE 12C



40. Using a jack (and an assistant to aid in balancing) raise the differential up to the new brackets.
41. Attach the differential to the driver's side front bracket and Passenger's side bracket with 12mm x 55mm bolts, nuts and washers (BP #660), the drivers side brackets shown in figure 11 will require 1/4" spacers. Attach the drivers side rear bracket to the differential with 12mm x 30mm bolts and washers (BP #660). Leave all differential hardware loose. DIESEL MODELS: When attaching the differential to the passenger's side drop bracket, reinstall the harmonic dampener and use the (2) 12mm x 60mm bolts provided (BP 660) in place of the 12mm x 55mm bolts (Fig 12C).
42. Torque all 14 differential mounting bolts. Torque the 1/2" hardware to 65 ft-lbs and the 12mm hardware to 50 ft-lbs.
43. Locate the front differential wiring harness. Remove from factory clips to give enough slack to reach the differential. Reattach to differential and tie up extra slack with provided zip ties.
44. Install the new front crossmember (01295) in the OE front lower control arm pockets (Fig 24A) and loosely fasten with the provided 18mm x 150mm bolts, nuts in conjunction with the provided rectangle cam slot washers (01264). On newer models check for clearance between the new front crossmember (01295) and the OE front lower control arm pockets, trim the control arm pockets (Fig 24B and Fig 24C) if

necessary using a grinder along with ensuring there are no burrs between the OE crossmember and the new front crossmember (Fig 24D).
Note: The offset in the crossmember goes to the front, bolts run from front to rear. on newer models it might be nessassary to place a jack under the new front crossmember to help line up the bolt holes.

FIGURE 13



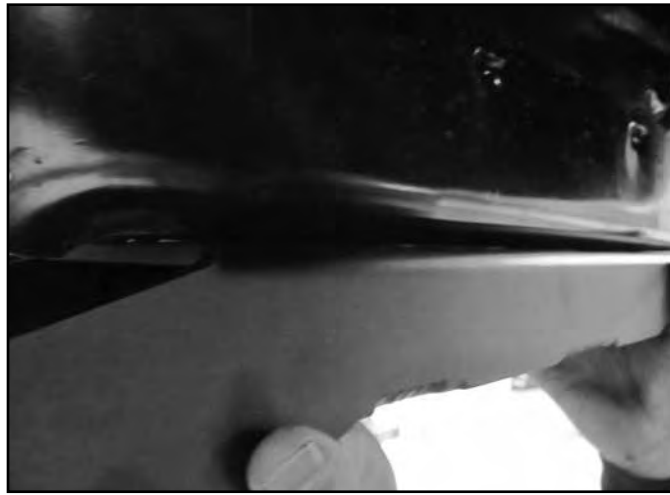
FIGURE 13 B



FIGURE 13 C



FIGURE 13 D



45. Install the new rear crossmember (01296) in the OE rear lower control arm pockets and loosely fasten with the provided 18mm x 150mm bolts, nuts in conjunction with the provided rectangle cam slot washers (01264). Run the bolts from front to rear and leave loose at this time. (Fig. 14)

FIGURE 14

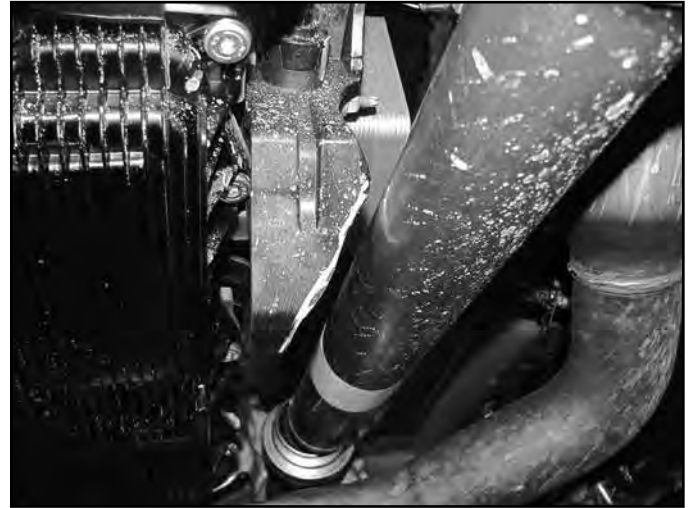


46. Install the new differential skid plate to the front crossmember with $\frac{1}{2}$ " x 1-1/4" bolts and $\frac{1}{2}$ " SAE washers (BP #660) into the welded nuts in the crossmember. Install the back of the skid plate to the rear crossmember with $\frac{1}{2}$ " x 1-1/4" bolts and $\frac{1}{2}$ " SAE washers (BP #660) into the welded nuts in the crossmember. Leave hardware loose.
47. Install the lower control arms in the front and rear crossmembers. Attach the control arms to the crossmembers with the OE cam bolts, washers and nuts running from front to rear. Leave hardware loose.
48. With the lower control arms installed, torque the 18mm crossmember mounting bolts to 220 ft-lbs. Torque the $\frac{1}{2}$ " differential skid plate hardware to 65 ft-lbs.
49. Install the provided drive shaft spacer (02242) on the differential input flange. Attach the front driveshaft to the differential by aligning the marks made earlier. Fasten the driveshaft and spacer to the differential flange with 12mm x 45mm bolts and 12mm washers (BP #663). Use loctite on the bolt threads and torque to 55 ft-lbs. (Fig 15A) On some new vehicles it is necessary to trim a splash guard located on the transmission shift linkage to clear the drive shaft. (Fig 15B)

FIGURE 15A



FIGURE 15B



50. Steps 51-54. In order to give a close to level stance after installation, preload spacers are included in these systems. Install the preload spacers if a more level stance is desired. The preload spacer will reduce the rake by an additional 5/8". Place indexing marks on the strut body, strut cap and upper coil seat (Fig 16A, 16B) for realignment of the components when the strut is reassembled.

FIGURE 16A

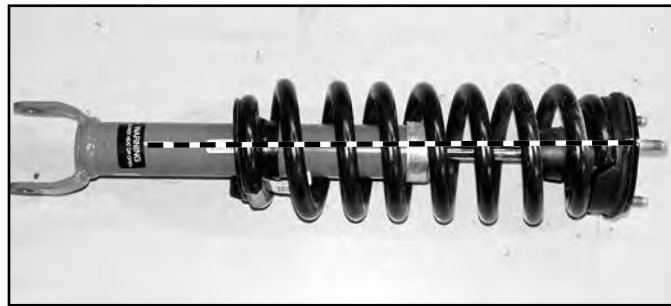


FIGURE 16B



! Caution *Coil spring is under extreme pressure. Improper removal/installation of coil spring could result in serious injury or death. Use only a high-quality spring compressor and carefully read and follow the manufacturer's instructions.*

51. Using an appropriate strut compressor, compress the coil spring and remove the upper strut nut (Fig 17). Remove the strut, strut cap and upper coil seat from the coil spring.

FIGURE 17



52. Place the provided preload spacer (01278) between the plastic coil seat and the rubber isolator (Fig 18).

FIGURE 18



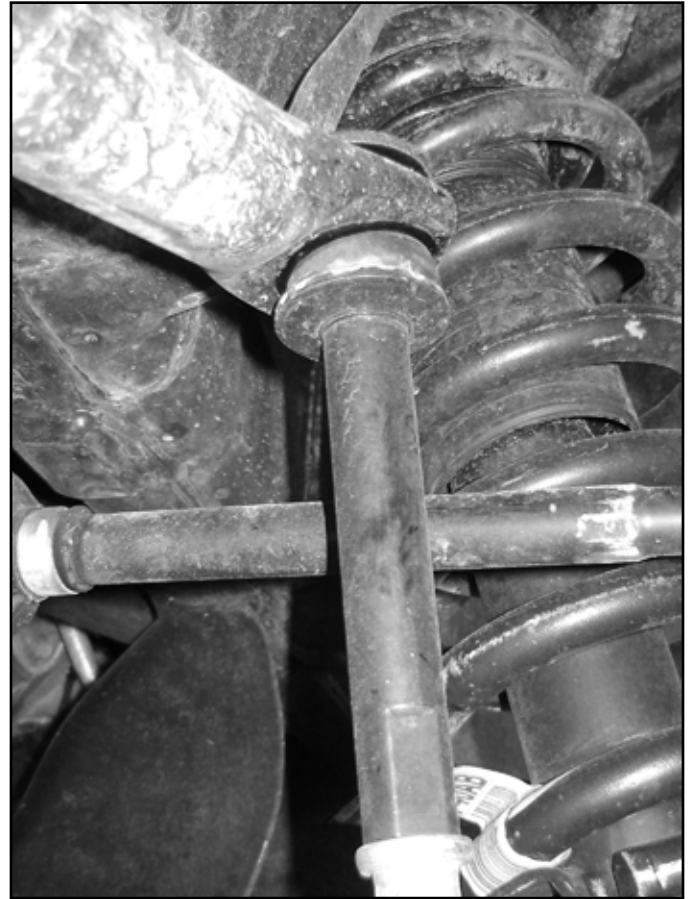
53. Reassemble the strut as it was taken apart by aligning the index marks made earlier. Fasten the assembly with the OE strut nut. Torque nut to 50 ft-lbs.
54. 4 inch kit only: Rotate the top of the strut 180 degrees. This will change the position of the coil bow to give enough clearance to the frame rail. Compress the coil slightly to allow the top plate, and only the top plate to rotate around 1/2 turn. This must be done for both strut assemblies.
55. Install the provided strut spacers (01267 - 6in kit or 02267 - 4in kit) on the struts with the original strut mounting hardware. Torque nuts to 30 ft-lbs.
56. Loosely install the strut assemblies on the appropriate sides of the truck with the provided 10mm nuts and washers (BP #662) on the strut spacer studs.
57. Install the new driver's side steering knuckle to the driver's side lower control arm ball joint and loosely attach with the original nut. Install the driver's side CV axle in the hub and loosely fasten with the original axle nut. Swing the knuckle/CV assembly up while aligning the axle with the differential output shaft. Loosely attach the strut to the lower control arm with the original hardware. Push the CV axle all the way onto the differential output to seat the internal retaining clip.
58. Support the lower control arm with a hydraulic jack and attach the knuckle to the upper ball joint with the OE nut.
59. Torque the upper ball joint nut to 55 ft-lbs and the lower ball joint nut to 60 ft-lbs. Torque the axle nut to 185 ft-lbs. Torque the upper strut-to-frame nuts to 30 ft-lbs.
60. Repeat knuckle/CV installation on passenger's side.
61. Install the brake rotor and caliper on the knuckle/hub. Torque the OE caliper bolts to 130 ft-lbs. Use loctite on the caliper bolts.
62. Trim 5/8" from the male thread on the inner tie rod. Take care not to trim too much off from the male threads to ensure adequate tie rod thread engagement.
63. Locate the provided tie rod ends and OE jam nuts and install them on the inner tie rod. Attach the tie rod ends to the new steering knuckles with the included nut. Torque to 55 ft-lbs. Securely lock off the jam nut. It is recommended to have approximately 2 threads left exposed past the jam nut for ease of alignment adjustment.

64. Reconnect the ABS wires at the frame.
65. Route the brake and ABS lines around the back side of the knuckle. Attach the brake line and ABS wire with 1/4" hardware and clamps bolt pack #823 / 662 to the threaded hole in the backside of the steering knuckle. There is an included large diameter clamp that is not used with this kit. Secure the ABS wire with zip ties at other locations to prevent any contact with rotating / moving parts. Ensure there is adequate slack and clearance between the brake line and suspension components. (Fig 19a)
66. Install the sway bar link extension onto the factory sway bar link. Attach the assembly to the sway bar with the factory bushing, new cup washers, and 7/16" nylock nuts (#662) and Loc-tite on threads to attach to the factory sway bar link.. Tighten bolt until bushings begin to deform. It is NOT necessary to over tighten the bolt. Over tightening will cause premature bushing wear. (Fig 19b)

FIGURE 19A



FIGURE 19A



67. Remove the stock CV boot clamp on the front driveshaft at the transfer case. Slide the boot rearward approximately 1/4" and install the new boot clamp, rotate the driveshaft to ensure that the clamp does not interfere with the lip on the front driveshaft. (Fig 20a, 20b)

FIGURE 20A

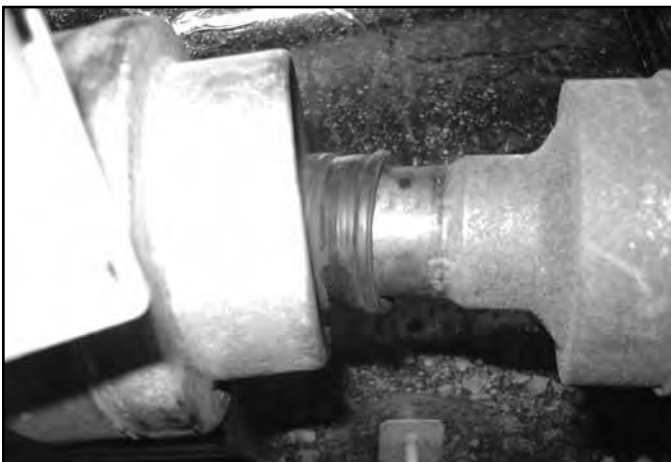


FIGURE 20B



68. Reinstall front wheels. Torque to OE specifications, see owner's manual.
69. Lower the vehicle to the ground and bounce the front to settle the suspension.
70. Center the lower cams and torque lower control arm hardware to 125 ft-lbs. Torque the strut-to-lower control arm bolt to 125 ft-lbs.
71. If the front brakelines were disconnected or replaced, the front brakes must be bled before driving vehicle. Also do a final check to ensure the brake lines will not contact the tire or other moving components.
72. Check all fasteners for proper torque. Recheck all fasteners after 500 miles and at regularly scheduled maintenance intervals.
73. A complete front end alignment is required. Do not drive the vehicle with the steering wheel off center. This can cause unsafe driving conditions.



WE WANT TO SEE YOUR RIDE!

Grab photos of your BDS-equipped truck in action and send them in for a chance to be featured. Send it in to our Bad Ass Rides customer gallery at bds-suspension.com/bar and post them on the BDS Fan Page on Facebook at facebook.com/BDSSuspensions. Don't forget about your BDS swag! BDS offers t-shirts, hoodies, decals and more available on the BDS website or through your local BDS distributor.

TIME TO HAVE SOME FUN

Thank you for choosing BDS Suspension.

For questions, technical support and warranty issues relating to this BDS Suspension product, please contact your distributor/installer before contacting BDS Suspension directly.

INSTALLATION GUIDE



Part#: 022309, 022509, 022209



HARDCORE LIMITED LIFETIME WARRANTY

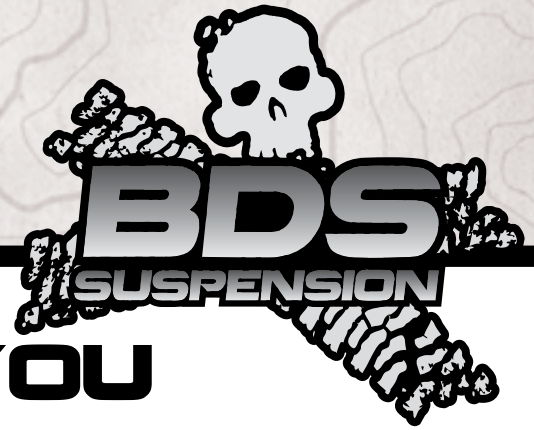
Rear High Clearance Suspension System

Dodge 1500 4WD | 2009-2018

Rev. 092519

491 W. Garfield Ave., Coldwater, MI 49036 • Phone: 517-279-2135
E-mail: tech@ridefox.com

Read And Understand All Instructions And Warnings Prior To Installation Of System And Operation Of Vehicle.



THANK YOU

Your truck is about to be fitted with the best suspension system on the market today. That means you will be driving the baddest looking truck in the neighborhood, and you'll have the warranty to ensure that it stays that way for years to come. Thank you for choosing BDS Suspension!

BEFORE YOU START

BDS Suspension Co. recommends this system be installed by a professional technician. In addition to these instructions, professional knowledge of disassembly/ reassembly procedures and post installation checks must be known.

FOR YOUR SAFETY

Certain BDS Suspension products are intended to improve off-road performance. Modifying your vehicle for off-road use may result in the vehicle handling differently than a factory equipped vehicle. Extreme care must be used to prevent loss of control or vehicle rollover. Failure to drive your modified vehicle safely may result in serious injury or death. BDS Suspension Co. does not recommend the combined use of suspension lifts, body lifts, or other lifting devices. You should never operate your modified vehicle under the influence of alcohol or drugs. Always drive your modified vehicle at reduced speeds to ensure your ability to control your vehicle under all driving conditions. Always wear your seat belt.

BEFORE INSTALLATION

Special literature required: OE Service Manual for model/year of vehicle. Refer to manual for proper disassembly/reassembly procedures of OE and related components.

Adhere to recommendations when replacement fasteners, retainers and keepers are called out in the OE manual.

Larger rim and tire combinations may increase leverage on suspension, steering, and related components. When selecting combinations larger than OE, consider the additional stress you could be inducing on the OE and related components.

Post suspension system vehicles may experience drive line vibrations. Angles may require tuning, slider on shaft may require replacement, shafts may need to be lengthened or trued, and U-joints may need to be replaced.

Secure and properly block vehicle prior to installation of BDS Suspension components. Always wear safety glasses when using power tools.

If installation is to be performed without a hoist, BDS Suspension Co. recommends rear alterations first.

Due to payload options and initial ride height variances, the amount of lift is a base figure. Final ride height dimensions may vary in accordance to original vehicle attitude. Always measure the attitude prior to beginning installation.



Visit 560plus.com for more information.

TRACTION CONTROL

In an effort to reduce the risk of rollover crashes the National Highway Traffic Safety Administration (NHTSA) established the Federal Motor Vehicle Safety Standard (FMVSS) No. 126 requiring all new passenger vehicles under 10,000 lbs GVWR include an electronic stability control (ESC) system as standard equipment. Effective August 2012 this law requires after-market products to be compliant with these same standards.



BEFORE YOU DRIVE

Check all fasteners for proper torque. Check to ensure for adequate clearance between all rotating, mobile, fixed, and heated members. Verify clearance between exhaust and brake lines, fuel lines, fuel tank, floor boards and wiring harness. Check steering gear for clearance. Test and inspect brake system.

Perform steering sweep to ensure front brake hoses have adequate slack and do not contact any rotating, mobile or heated members. Inspect rear brake hoses at full extension for adequate slack. Failure to perform hose check/ replacement may result in component failure. Longer replacement hoses, if needed can be purchased from a local parts supplier.

Perform head light check and adjustment.

Re-torque all fasteners after 500 miles. Always inspect fasteners and components during routine servicing.

CONTENTS OF YOUR KIT

BDS022209, BDS022309, & BDS022509 Box Kits		
<i>Part #</i>	<i>Qty</i>	<i>Description</i>
01278	2	Preload Spacer
02280B	1	Rear Track Bar Bracket
03574	1	Driver Rear Bump Spacer
03575	1	Passenger Rear Bump Spacer
01292	1	Driver Side Relocation Bracket
01293	1	Passenger Side Relocation Bracket
911112	2	Sway bar links (022509 Only)
911103	2	Sway bar link (022309 & 022209 Only)
01290	2	Shock Nut Tab
01294	2	Nut Plate
01894	2	Upper Coil Retainer (022309 Only)
109	1	1.00 x .125 x 1.360 DOM Sleeve
110	2	1.00 x .125 x 2.375 DOM Sleeve
62147	4	.625 x .075 x 1.375 Sleeve
SB58BK	4	5/8 ID Hourglass Bushing - black
SBLA	2	Brake Adapters
01999B	2	Rear Bump Stop (022509 Only)
03574	1	Driver Rear Bump Spacer (022309 Only)
03575	1	Passenger Rear Bump Spacer (022309 Only)
032509R	2	5" Rear Coil (022509 Only)
032309R	2	3" Rear Coil (022309 Only)
02533BK	2	2" Rear Coil Spacer (022209 Only)

Bolt Packs		
<i>Part #</i>	<i>Qty</i>	<i>Description</i>
807	1	Bolt Pack - Sway Bar Links
	4	12mm x 60mm bolt
	8	7/16" USS washer
	4	12mm Prevailing torque nut
477	1	Bolt Pack - Rear Bump Stops (022309 Only)
	4	3/8-16 X 3/4" SHCS, Clear Zinc
813	1	Bolt pack - Main Rear Kit
	3	9/16" x 3" bolt
	1	9/16" Prevailing torque nut
	4	9/16" SAE washer
	2	5/8" x 4-1/2" bolt
	2	5/8" Prevailing torque nut
	4	5/8" SAE washer
	9	3/8" x 1-1/4" Bolt
	9	3/8" Prevailing torque nut
	18	3/8" SAE T washer
	1	8mm x 30mm bolt
	1	5/16" USS washer
	2	1/4" x 3/4" bolt
	2	1/4" nylock nut
	4	1/4" SAE washer
599	1	Bolt Pack - Coil Spring Retainer (022309 Only)
	2	3/8"-16 x 1-1/4" Bolt - type 23 Self threading
	2	3/8"-16 x 2" Bolt, Grade 5, Clear Zinc
	2	3/8"-16 x 1" Bolt, Grade 5, Clear Zinc
	2	3/8"-16 Serrated Edge Flanged Nut, Clear Zinc
	4	3/8" USS Washer, Clear Zinc
808	1	Bolt Pack - Rear Bump Stops (022509 Only)
	4	3/8"-16 x 7/8" Bolt, Grade 8, Yellow Zinc
	4	3/8" SAE Washer, Yellow Zinc

TECH TIPS

TROUBLESHOOTING INFORMATION FOR YOUR VEHICLE

1. These trucks vary from 1-3" tail high from the factory. Measure your vehicle before installing. The 022209, 022309, and 022509 can all be substituted to achieve the desired stance.
2. Will not fit adjustable air suspension equipped models.

INSTALLATION INSTRUCTIONS

PRE-INSTALLATION MEASUREMENTS

Measure from the center of the wheel up to the bottom edge of the wheel opening

LF _____ RF _____ LR _____ RR _____

INSTALLATION INSTRUCTIONS

1. Park the vehicle on clean, flat, and level surface. Block the front wheels for safety.
2. Disconnect the rear trackbar from the axle, retain hardware.
3. Raise the rear of the vehicle and support the frame rails with jackstands.
4. Remove the wheels.
5. Support the axle with a hydraulic jack.
6. Remove the OE shocks. Retain the mounting hardware.
7. Remove the parking brake cable retaining the ring from the driver's side frame rail (Fig 1). Remove the driver's side parking brake cable from the ring and reinstall the ring on the frame with the passenger's side cable still in it.



Tip *Newer models this step is not necessary because the cable bracket is connected to the control arm instead of the frame.*

FIGURE 1



8. Disconnect brake line brackets from the outside of the frame rails. Remove the ABS wires from the retaining clips. (Fig. 2)

FIGURE 2



9. Remove rear sway bar links, retain hardware.
10. Lower the rear axle and remove the coils, retain the rubber isolators.
11. Disconnect the upper control arm from the axle. Loosen the upper control arm bolt at the frame rail, but do not remove. Retain hardware.
12. Place the upper control arm relocation bracket over the pocket. The plate will be offset towards the inside of the vehicle. The upper plate will only use 2 of the 4 holes that go from the top down. Mark the center of the holes and drill to 7/16". (Fig 3 - pass side, Fig. 4a, b – drv side)

FIGURE 3

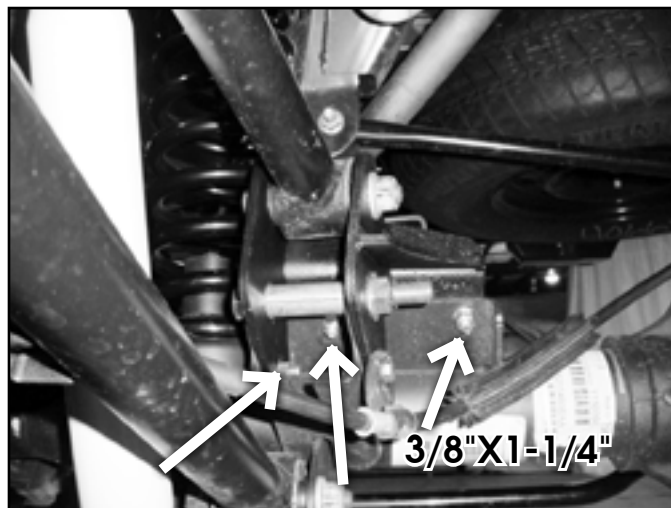


FIGURE 4A

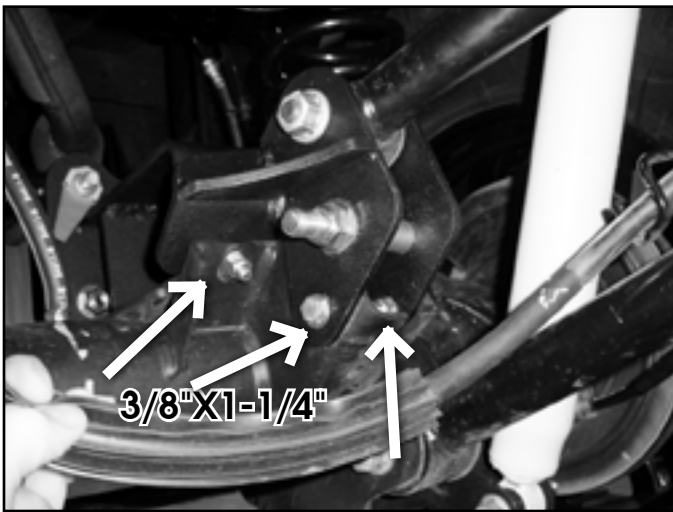
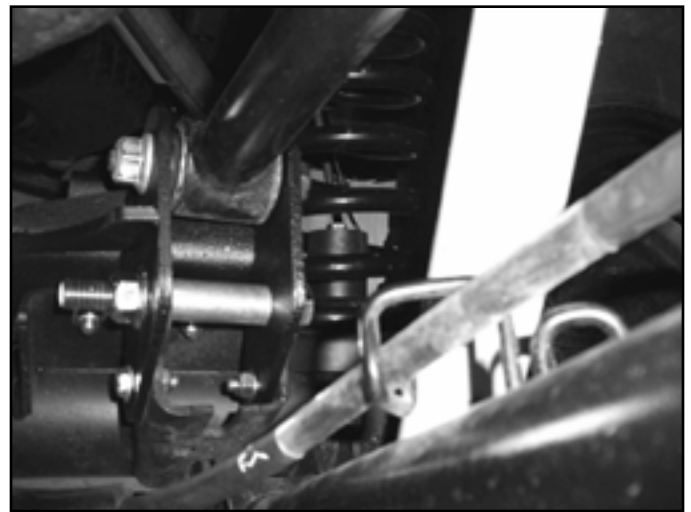


FIGURE 4B



13. The lower holes can be marked by offsetting the plate to the opposite side of the control arm pocket, or cutting out the template at the end of the instruction sheet, aligning it with the bracket profile, and translating the hole onto the frame bracket. Mark the lower hole centers and drill out to 3/8 to 7/16".
14. Attach relocation brackets with 3/8" x 1-1/4" bolts, washers, and nuts. The inside passenger hole will require the 8mm bolt and the tab on the e-brake cable bracket to be formed slightly for clearance. Use 5/8" x 4-1/2" bolt with crush sleeve through the original upper arm mounting hole. Hardware is located in bolt pack 813.
15. Install the upper arm with the OE bolt. Leave control arm hardware loose at this time. Tighten 8mm bolt to 25 ft-lbs, 3/8" hardware to 35 ft-lbs, and 5/8" hardware to 95 ft-lbs.
16. 3" rear coil kit only: Drill the center of the lower coil mounting seat to 5/16" ~ 21/64" and tap the hole to 3/8" with the included self threading bolt (#599).
17. Lower the axle and install the new coil springs with OE rubber isolator. If installing optional kit with 2" spacers, place spacers against the frame with the OE isolator below (Fig 5a). Reinstall the coil assembly with spacer as shown (either new coil or coil and spacer). 3" rear kit only: Attach the coil to the upper frame mount with the provided coil retaining clip (#01894) through the factory hole and through the coil to keep it secured to frame. The hole is located towards the rear of the vehicle. Attach upper mount with 3/8" x 1-1/4" hardware (Fig 5b), attach lower coil centering block to the axle with 3/8" x 2" bolt with washer (Bolt Pack #599). (Fig 5c)

FIGURE 5A



18. Install the new rear shocks. Use new 9/16" x 3" bolts at the top mount with the new nut tabs (01290). Tighten shock hardware to 75 ft-lbs.
19. Place rear track bar bracket (02280B) over original mount. Mark hole center to be drilled. Remove bracket and drill hole to 7/16".
20. Install the track bar bracket back on the factory mount. Fasten with the provided 9/16" hardware through the original track bar hole. Place the provided crush sleeve (109) in the factory bracket when installing the hardware (Fig 6a). Attach bracket with 3/8" x 1-1/4" bolt, nuts and washers through the hole drilled in the previous step. Tighten 3/8" hardware to 35 ft-lbs and 9/16" to 95 ft-lbs. (Fig 6b)

FIGURE 5B

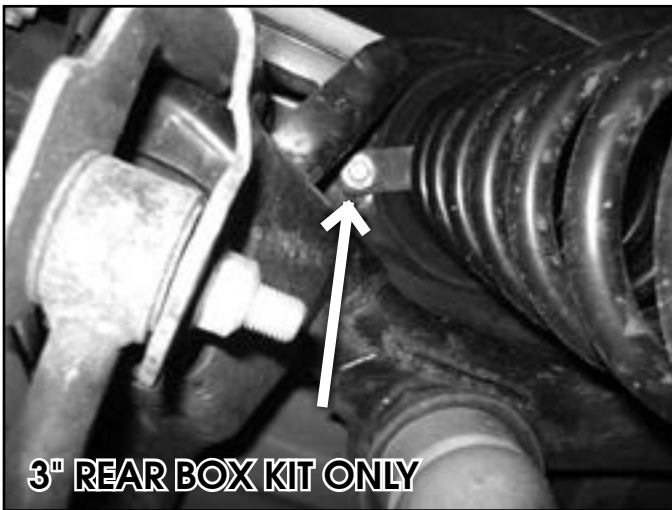


FIGURE 5C

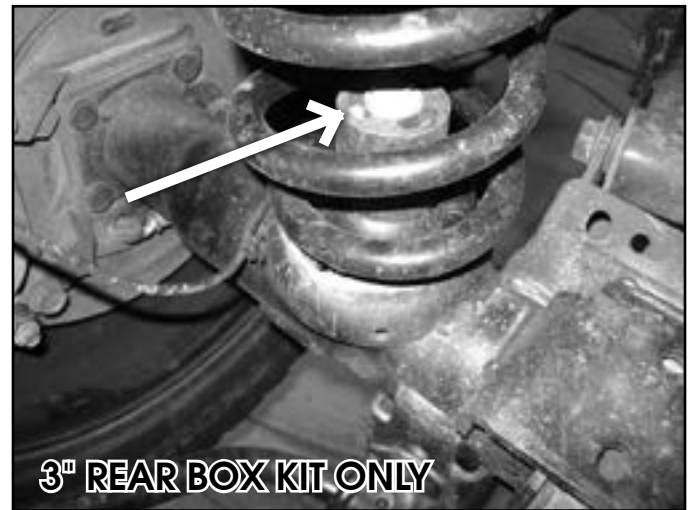


FIGURE 6A

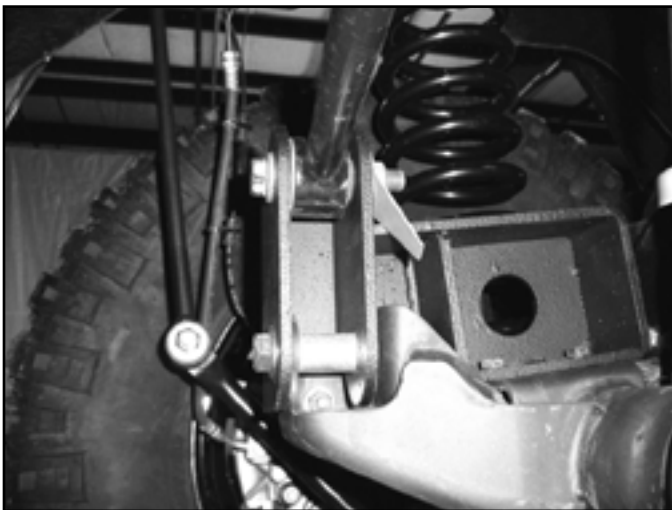
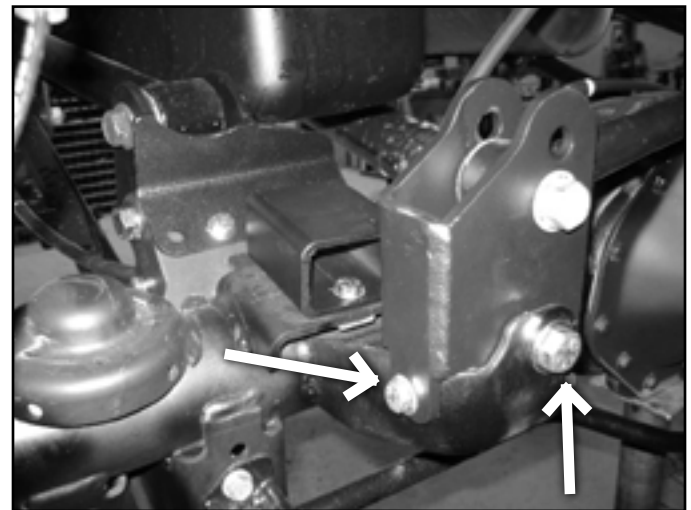
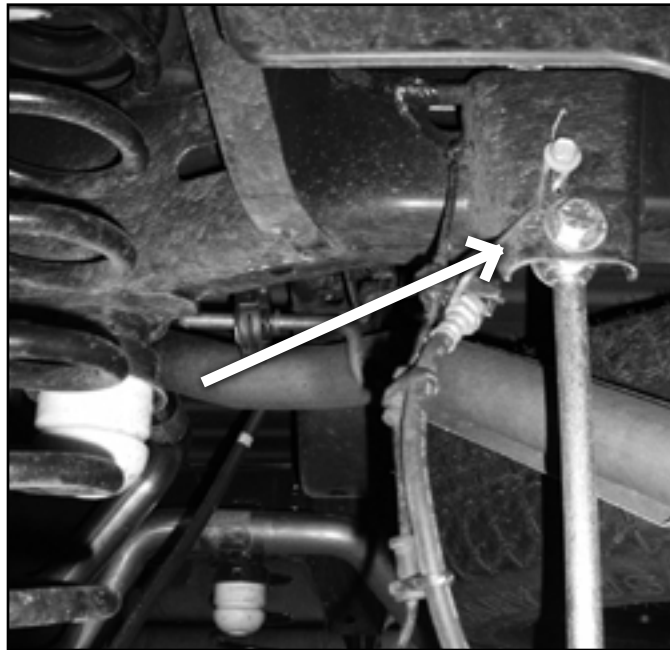


FIGURE 6B



21. Attach bump stop extensions (01999 - 5in kit / 03574, 03575 2-3in kit) to driver's and passengers's side with 3/8" x 7/8" bolts with washers (BP 808) into the provided threaded plates (01294). Tighten to 35 ft-lbs. 2-3" rear kits orientate the block so that it is the short (2") setup (Fig 6b). When installing the 5in system, install the extension with the offset going forward.
22. Install hourglass bushings into sway bar links. Install sleeves into bushings.
23. Install sway bar links (15" long - #91112 - 5 inch kit / 13" long - #911103 - 3 inch kit) on vehicle with 12mm x 60mm bolts, washers and nuts. (#807) Tighten to 55 ft-lbs. (Fig 8). Sway bar links mount to the inside of the bracket, same as the factory sway bar links.

FIGURE 7



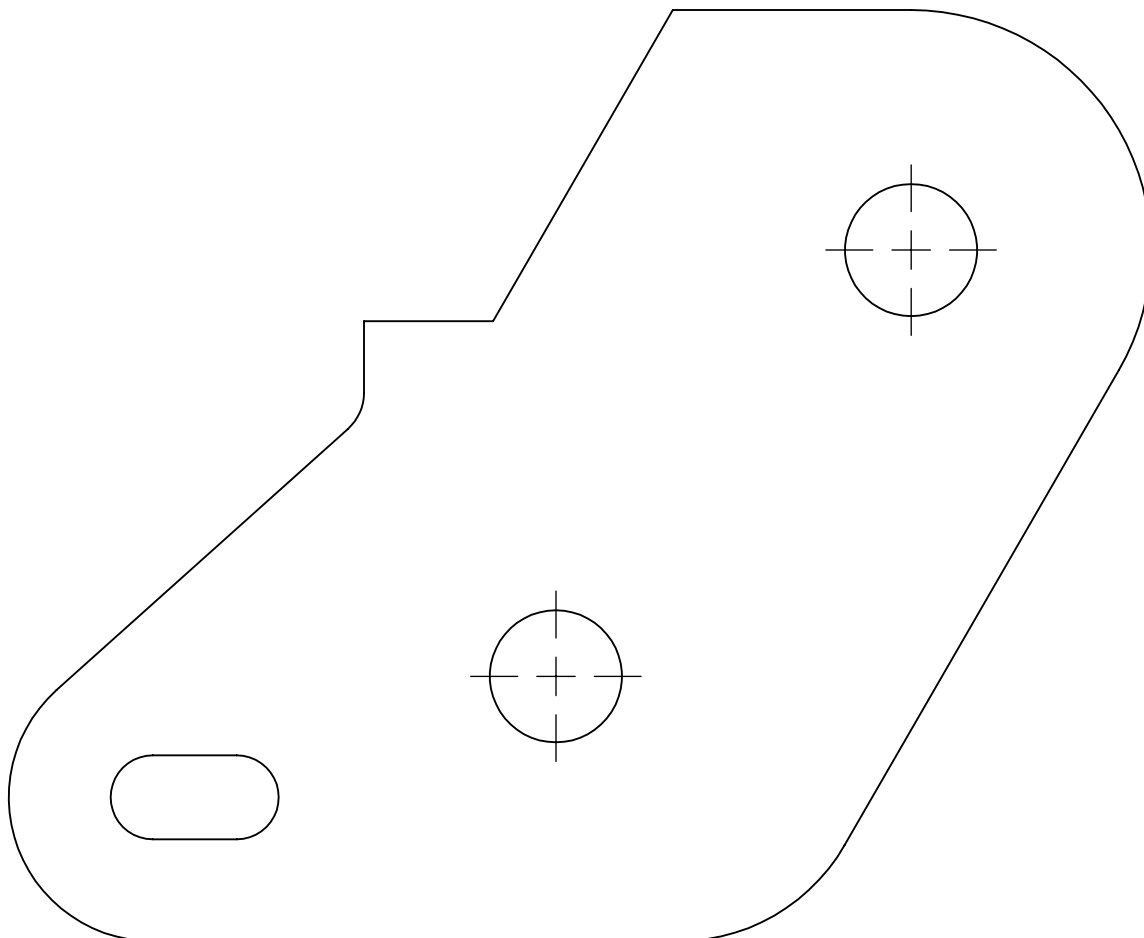
24. Install brakeline drop brackets on the side of the frame rail. Attach brakeline to bracket with $\frac{1}{4}$ " x $\frac{3}{4}$ " bolt, washers, and nut. Tighten to 20 ft-lbs. (Fig 9)

FIGURE 8



25. Reattach ABS wire to clips on brakeline.
26. Install wheels and lower vehicle to the ground.
27. Tighten upper control arm hardware to 120 ft-lbs.
28. Install rear trackbar into relocation bracket with OE bolt and nut. Tighten to 95 ft-lbs.
 - 5 inch rear lifts (022509) use the upper hole.
 - 2-3 inch rear lifts (022209/022309) use the lower hole.
29. Recheck all fasteners for proper torque. Check again after 500 miles and at regularly scheduled intervals.

Rear Template 09+ Dodge 1500



WE WANT TO SEE YOUR RIDE!

Grab photos of your BDS-equipped truck in action and send them in for a chance to be featured. Send it in to our Bad Ass Rides customer gallery at bds-suspension.com/bar and post them on the BDS Fan Page on Facebook at facebook.com/BDSSuspensions. Don't forget about your BDS swag! BDS offers t-shirts, hoodies, decals and more available on the BDS website or through your local BDS distributor.

TIME TO HAVE SOME FUN

Thank you for choosing BDS Suspension.

For questions, technical support and warranty issues relating to this BDS Suspension product, please contact your distributor/installer before contacting BDS Suspension directly.