

INSTALLATION INSTRUCTIONS

Ram 2500 Battery Box Installation Procedure

NOTE: FAILURE TO INSTALL THIS PRODUCT AS SPECIFIED IN THE INSTALLATION PROCEDURE WILL VOID ALL WARRANTY. IF ANY PARTS HAVE ARRIVED DAMAGED OR WERE NOT SUPPLIED IN THE KIT, PLEASE TAKE PHOTOS AND THEN PROCEED TO CONTACT YOUR SUPPLIER.

IN THE BOX

- 1x Battery Box
- 1x Bolt kit
- 1x Battery securing bracket (flat)
- 1x Battery securing bracket (bent)

TOOLS REQUIRED

- Ratchet/electric ratchet
- Breaker bar/rattle gun
- Various sized sockets
- 5mm allen key
- Various sized spanners
- Jack + jack stands/hoist
- Loctite



OVERLANDING
THE AUSSIE WAY



NOTE: FAILURE TO INSTALL THIS PRODUCT AS SPECIFIED IN THE INSTALLATION PROCEDURE WILL VOID ALL WARRANTY. IF ANY PARTS HAVE ARRIVED DAMAGED OR WERE NOT SUPPLIED IN THE KIT, PLEASE TAKE PHOTOS AND THEN PROCEED TO CONTACT YOUR SUPPLIER.

NOTES: FOR EASE OF INSTALLATION, WE RECOMMEND USING A HOIST OR AT LEAST A JACK WITH JACK STANDS.

1

1.1

Start by raising the car up and removing the LHR inner plastic wheel guard, retain all hardware for later fitment. *Refer Image 1.*



Image 1

1.2

Next, remove the secondary plastic guard situated behind the one removed in step 1-A), retain all hardware for later fitment.

Refer Image 2.



Image 2

2

2.1

Locate the 2 OEM bolts in the chassis above the sway bar link, remove and discard them.

Refer Image 3 and 4.



Image 3



Image 4

NOTE: FAILURE TO INSTALL THIS PRODUCT AS SPECIFIED IN THE INSTALLATION PROCEDURE WILL VOID ALL WARRANTY. IF ANY PARTS HAVE ARRIVED DAMAGED OR WERE NOT SUPPLIED IN THE KIT, PLEASE TAKE PHOTOS AND THEN PROCEED TO CONTACT YOUR SUPPLIER.

2.2

Locate the 2 OEM bolts in the chassis securing the towbar, remove and retain them for later fitment.

Refer Image 5 and 6.

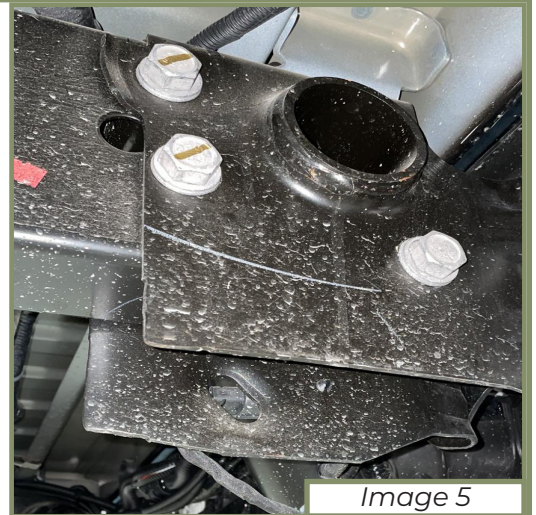


Image 5

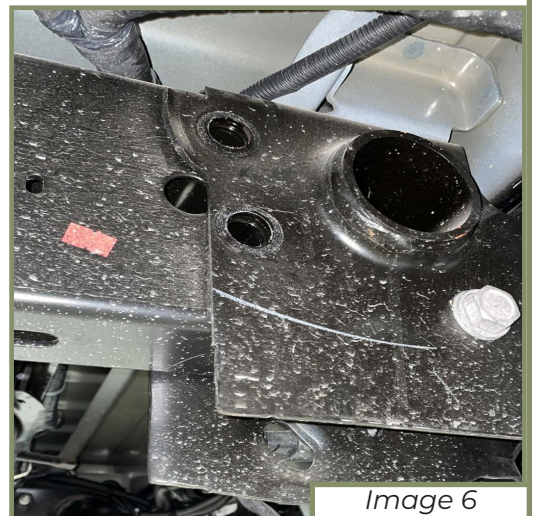


Image 6

3.1

Using the OEM bolts removed in step 2-B), lift the battery box up into place and loosely install the OEM bolts with loctite in the rear mounting holes.

Refer Image 7.

3.2

Using the 2 supplied M12 Hex head bolts and washers with loctite, loosely install bolts into the front mounting holes.

Refer Image 8.

3.3

With all 4 bolts now loosely installed, tighten all 4 bolts.



Image 7



Image 8

NOTE: FAILURE TO INSTALL THIS PRODUCT AS SPECIFIED IN THE INSTALLATION PROCEDURE WILL VOID ALL WARRANTY. IF ANY PARTS HAVE ARRIVED DAMAGED OR WERE NOT SUPPLIED IN THE KIT, PLEASE TAKE PHOTOS AND THEN PROCEED TO CONTACT YOUR SUPPLIER.

3

4

Slide the battery into the battery box on its side with the terminals facing up.

Refer Image 9.



Image 10

5

5.1

Loosely bolt the angled battery securing bracket to the battery box using 3 M8 hex head bolts, spring washers and washers.

Refer Image 10.

5.2

Loosely bolt the flat battery securing bracket to the battery box using 3 M8 allen key head bolts, spring washers and washer.

Refer Image 11.

5.3

Tighten all 6 bolts securing the battery box brackets.

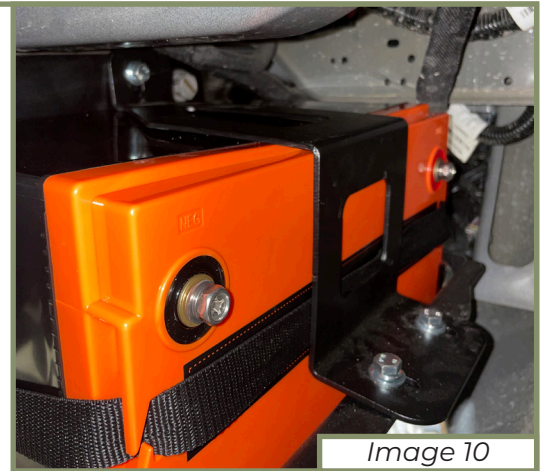


Image 10



Image 11

6

Reinstall the secondary inner plastic guard removed in step 1-B) using the OEM fasteners and tighten.

7

Reinstall the inner plastic guard removed in step 1-A) using the OEM fasteners and tighten.

8

Once you are satisfied with everything and you have checked all fasteners, drop the vehicle back down onto the ground.

Installation of the Ram 2500 Battery Box is now complete

NOTE: FAILURE TO INSTALL THIS PRODUCT AS SPECIFIED IN THE INSTALLATION PROCEDURE WILL VOID ALL WARRANTY. IF ANY PARTS HAVE ARRIVED DAMAGED OR WERE NOT SUPPLIED IN THE KIT, PLEASE TAKE PHOTOS AND THEN PROCEED TO CONTACT YOUR SUPPLIER.