

INSTALLATION INSTRUCTIONS

Ram 2500/3500 CREW CAB ADVENTURE RAILS INSTALLATION PROCEDURE

NOTE: FAILURE TO INSTALL THIS PRODUCT AS SPECIFIED IN THE INSTALLATION PROCEDURE WILL VOID ALL WARRANTY. IF ANY PARTS HAVE ARRIVED DAMAGED OR WERE NOT SUPPLIED IN THE KIT, PLEASE TAKE PHOTOS AND THEN PROCEED TO CONTACT YOUR SUPPLIER.

IN THE BOX

- 6 x Roof mounting brackets
- 1 x LHS adventure rail backbone
- 1 x RHS adventure rail backbone
- 8 x Cross rails
- 1 x Wind deflector
- 1 x Wind deflector bolt kit
- 1 x Adventure rail bolt kit

TOOLS REQUIRED

- Drill
- Drill bits
- Drill stop
- Step drill
- Nutsert tool
- Air blower
- Caramel wheel
- Tape measure
- Ratchet or battery ratchet
- Various sized sockets
- Allen key set
- 13mm spanner
- Sikaflex or waterproof sealant
- Sharp scissors or snips
- Paint/rust preventative spray
- Plastic trim tool



**OVERLANDING
THE AUSSIE WAY**



NOTE: FAILURE TO INSTALL THIS PRODUCT AS SPECIFIED IN THE INSTALLATION PROCEDURE WILL VOID ALL WARRANTY. IF ANY PARTS HAVE ARRIVED DAMAGED OR WERE NOT SUPPLIED IN THE KIT, PLEASE TAKE PHOTOS AND THEN PROCEED TO CONTACT YOUR SUPPLIER.

IMPORTANT NOTES

- **Roof Max Weight:** 100kg
 - **On-Road Max Weight:** 77kg
 - **Off-Road Max Weight:** 57kg
 - Load must be evenly distributed over the entire rack. Failure to load the weight evenly and exceeding the weight limits may result in damage to the Adventure Rail system.
 - Drilling into the vehicle is required to fit the Outback Kitters Adventure Rails. Please make sure you read and understand the instructions before commencing the installation.
 - Vehicle handling may be impacted when adding load to the roof. Due care must be taken when loaded to ensure safe driving, especially when braking and cornering.
 - **Offroad Driving:** When driving off-road with a load attached to your roof, the various, rigorous conditions can loosen bolts over time. Periodically check the roof racks to ensure all bolts are tight. Failure to properly maintain the Adventure Rails may result in damage and/or injury.
 - Additional wind noise may be apparent once installing these Adventure Rails. The wind deflector has been designed to reduce the wind noise, but will not eliminate it. Noise may be variable based on travel speeds and wind direction.
- Note to OK Installers:** You must provide these fitting instructions to your customer for reference.

NOTE: FAILURE TO INSTALL THIS PRODUCT AS SPECIFIED IN THE INSTALLATION PROCEDURE WILL VOID ALL WARRANTY. IF ANY PARTS HAVE ARRIVED DAMAGED OR WERE NOT SUPPLIED IN THE KIT, PLEASE TAKE PHOTOS AND THEN PROCEED TO CONTACT YOUR SUPPLIER.

1

Start by using a plastic trim tool to remove the roof channel trim on both sides.

Note: these will need to be set aside for later fitment.

Refer Image 1.



Image 1

2.2

Using a caramel wheel with a drill, remove the excess double sided tape left within the channel on both sides of the car. Refer to figures 2 and 3.

Refer Image 2 and 3.

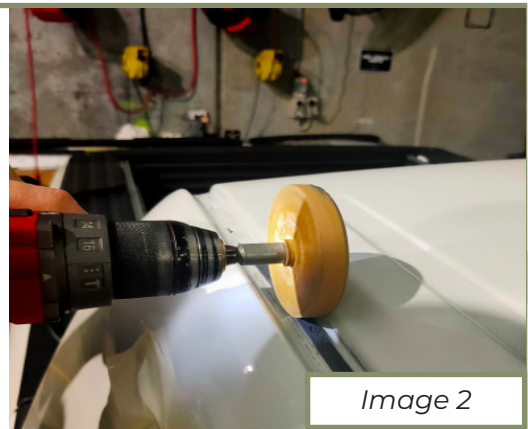


Image 2

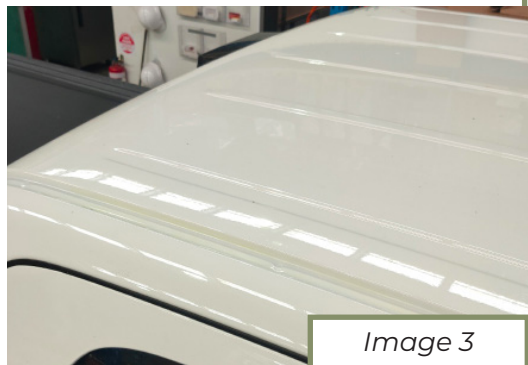


Image 3

NOTE: FAILURE TO INSTALL THIS PRODUCT AS SPECIFIED IN THE INSTALLATION PROCEDURE WILL VOID ALL WARRANTY. IF ANY PARTS HAVE ARRIVED DAMAGED OR WERE NOT SUPPLIED IN THE KIT, PLEASE TAKE PHOTOS AND THEN PROCEED TO CONTACT YOUR SUPPLIER.

2

2.1

Start on any side of the car, measure 280mm back from the edge of the rubber windscreen trim and mark a line inside the roof channel.

Refer Image 4 and 5.



Image 4

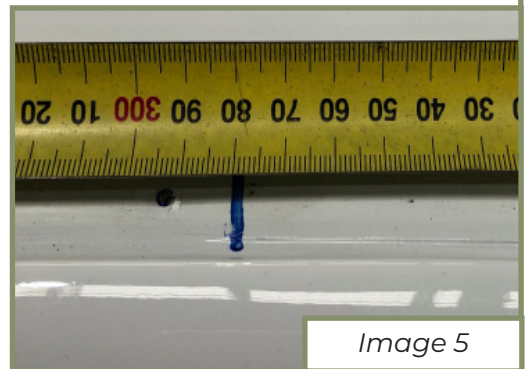


Image 5

2.2

Place one of the roof rail brackets supplied in the kit against this line and then mark the drill holes as well as another line rearwards edge of the bracket to measure the distance for the next bracket.

Refer Image 6.



Image 6

NOTE: FAILURE TO INSTALL THIS PRODUCT AS SPECIFIED IN THE INSTALLATION PROCEDURE WILL VOID ALL WARRANTY. IF ANY PARTS HAVE ARRIVED DAMAGED OR WERE NOT SUPPLIED IN THE KIT, PLEASE TAKE PHOTOS AND THEN PROCEED TO CONTACT YOUR SUPPLIER.

3

3.1

Measure 445mm back from the rearward bracket line previously marked in step 2 - B) and mark another line in the channel.

Refer Image 7 and 8.

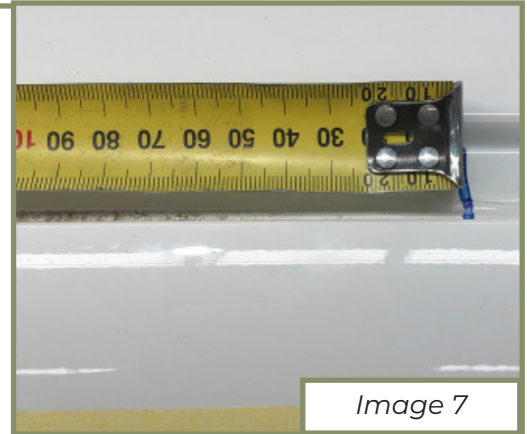


Image 7

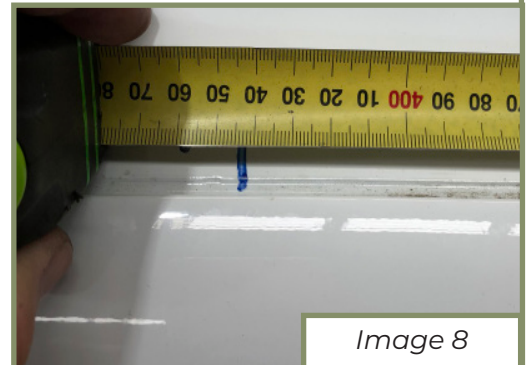


Image 8

3.2

Using the process from step 2 - B), proceed to mark out the drill holes and another line on the rearwards edge of the bracket.

Refer Image 9.



Image 6

NOTE: FAILURE TO INSTALL THIS PRODUCT AS SPECIFIED IN THE INSTALLATION PROCEDURE WILL VOID ALL WARRANTY. IF ANY PARTS HAVE ARRIVED DAMAGED OR WERE NOT SUPPLIED IN THE KIT, PLEASE TAKE PHOTOS AND THEN PROCEED TO CONTACT YOUR SUPPLIER.

4

4.1

Measure 460mm back from the rearwards bracket line previously marked in step 3 - B).

Refer Image 10 and 11.

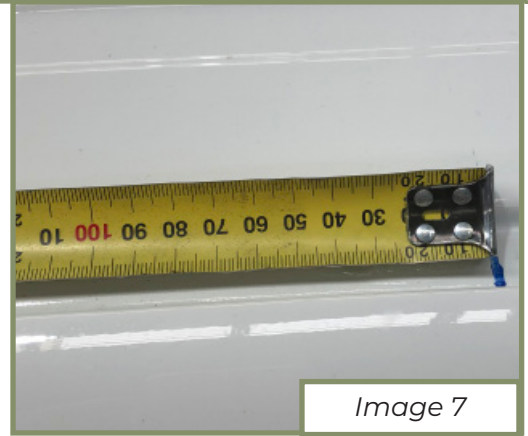


Image 7

4.2

Repeat the previous process to mark out the drill holes for the last bracket. Once this has been done, repeat this whole process from step 2 to 4 on the other side of the car.



Image 8

5

5.1

Once both sides of the car have been marked, using a small sharp pilot hole drill bit, drill all the holes marked with the brackets in the previous steps.

NOTE: Be sure to use a drill stop with drill bits so as to not drill too far down into the channel and hit the wiring/airbag.



Image 12

5.2

Once the pilot holes have been drilled, drill all holes out to 10mm.

Refer to Image 13.



Image 13

NOTE: FAILURE TO INSTALL THIS PRODUCT AS SPECIFIED IN THE INSTALLATION PROCEDURE WILL VOID ALL WARRANTY. IF ANY PARTS HAVE ARRIVED DAMAGED OR WERE NOT SUPPLIED IN THE KIT, PLEASE TAKE PHOTOS AND THEN PROCEED TO CONTACT YOUR SUPPLIER.

6

6.1

Once all holes have been drilled, blow off any excess metal from the roof.

6.2

Next use a rust preventative spray or paint the hole to prevent rust, be sure to wipe off any excess spray.

Refer to Image 14.



Image 14

7

Once all holes are dry, using a nutsert tool, proceed to install all 12 6mm thread nutserts which are provided in the kit on both sides of the vehicle.

Refer to Image 15 and 16.

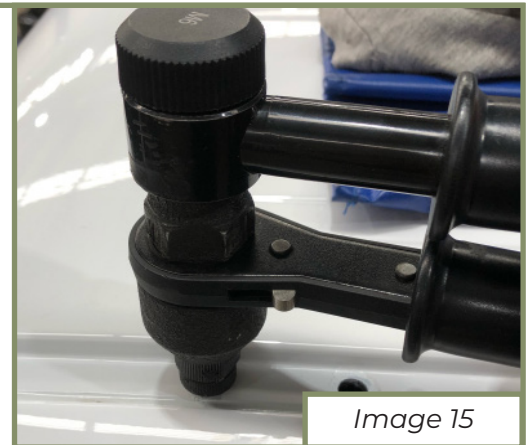


Image 15



Image 16

8

8.1

Once all nutserts have been installed, apply a small ring of silicone or sikaflex around each nutsert.

Refer to Image 17.

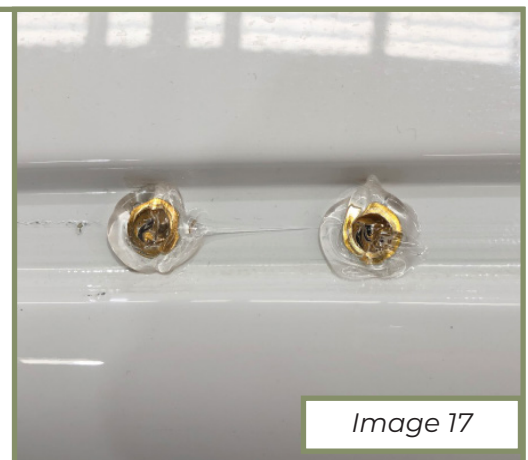


Image 17

NOTE: FAILURE TO INSTALL THIS PRODUCT AS SPECIFIED IN THE INSTALLATION PROCEDURE WILL VOID ALL WARRANTY. IF ANY PARTS HAVE ARRIVED DAMAGED OR WERE NOT SUPPLIED IN THE KIT, PLEASE TAKE PHOTOS AND THEN PROCEED TO CONTACT YOUR SUPPLIER.

8.2

Proceed to install each roof mount bracket with supplied M6 bolts, M6 spring washers and M6 washers and tighten all bolts.

Refer to Image 18.



Image 17

9

For each side, place the trim inwards against the mounting brackets and mark a line of where to cut each section. Cut each section of the trim out, clean up all edges and then re-install trim pieces using double sided tape or sikaflex.

Refer to Image 19 and 20.



Image 19

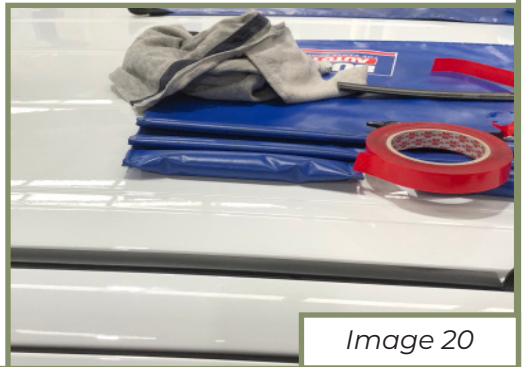


Image 20

10

10.1

Use a folding stand or some cardboard/blanket on the ground to begin the pre-assembling of the roof rack.

NOTE: FAILURE TO INSTALL THIS PRODUCT AS SPECIFIED IN THE INSTALLATION PROCEDURE WILL VOID ALL WARRANTY. IF ANY PARTS HAVE ARRIVED DAMAGED OR WERE NOT SUPPLIED IN THE KIT, PLEASE TAKE PHOTOS AND THEN PROCEED TO CONTACT YOUR SUPPLIER.

10.2

Using the spring nuts, M8 allen key head bolts, M8 spring washers and M8 washers supplied in the bolt kit, proceed to loosely install the provided cross strengthening rails to the Adventure Rail Backbones.

NOTE: if installing a wind deflector shield then this will need to be done at the same time and mounts directly to the top.

Refer to Image 21.



Image 21

11

11.1

With the help of a second person, proceed to lift the assembly onto the roof and secure the backbones to the roof channel brackets using M8 allen key head bolts, M8 washers and M8 lock nuts supplied in the kit.

11.2

Once all bolts are in, begin to tighten all roof rack bolts starting with the backbone mounting brackets first on each side and then tighten all the cross rail bolts.



Image 19

12

Once all bolts are tight, wipe down the roof and roof rails to remove all marks and handprints.

Installation of the Outback Kitters Adventure rails is now complete.

NOTE: FAILURE TO INSTALL THIS PRODUCT AS SPECIFIED IN THE INSTALLATION PROCEDURE WILL VOID ALL WARRANTY. IF ANY PARTS HAVE ARRIVED DAMAGED OR WERE NOT SUPPLIED IN THE KIT, PLEASE TAKE PHOTOS AND THEN PROCEED TO CONTACT YOUR SUPPLIER.