

INSTALLATION INSTRUCTIONS

RAM 1500 DT ADVENTURE RAILS

NOTE: FAILURE TO INSTALL THIS PRODUCT AS SPECIFIED IN THE INSTALLATION PROCEDURE WILL VOID ALL WARRANTY. IF ANY PARTS HAVE ARRIVED DAMAGED OR WERE NOT SUPPLIED IN THE KIT, PLEASE TAKE PHOTOS AND THEN PROCEED TO CONTACT YOUR SUPPLIER.

IN THE BOX

- 6 x Roof mounting brackets
- 1 x LHS adventure rail backbone
- 1 x RHS adventure rail backbone
- 8 x Cross rails
- 1 x Wind deflector
- 1 x Wind deflector bolt kit
- 1 x Adventure rail bolt kit

TOOLS REQUIRED

- Drill, drill bits
- Drill stop
- Step drill
- Nutsert tool
- Air blower
- Tape measure
- Ratchet or battery ratchet
- Various sized sockets
- Allen key set
- 13mm spanner
- Sikaflex or waterproof sealant
- Air Saw or Hacksaw
- Paint/rust preventative spray
- Plastic trim tool



IMPORTANT NOTES

- **Roof Max Weight:** 100kg
- **On-Road Max Weight:** 77kg
- **Off-Road Max Weight:** 57kg
- Load must be evenly distributed over the entire rack. Failure to load the weight evenly and exceeding the weight limits may result in damage to the Adventure Rail system.
- Drilling into the vehicle is required to fit the Outback Kitters Adventure Rails. Please make sure you read and understand the instructions before commencing the installation.
- Vehicle handling may be impacted when adding load to the roof. Due care must be taken when loaded to ensure safe driving, especially when braking and cornering.
- **Offroad Driving:** When driving off-road with a load attached to your roof, the various, rigorous conditions can loosen bolts over time. Periodically check the roof racks to ensure all bolts are tight. Failure to properly maintain the Adventure Rails may result in damage and/or injury.
- Additional wind noise may be apparent once installing these Adventure Rails. The wind deflector has been designed to reduce the wind noise, but will not eliminate it. Noise may be variable based on travel speeds and wind direction.

Note to OK Installers: You must provide these fitting instructions to your customer for reference.

NOTE: FAILURE TO INSTALL THIS PRODUCT AS SPECIFIED IN THE INSTALLATION PROCEDURE WILL VOID ALL WARRANTY. IF ANY PARTS HAVE ARRIVED DAMAGED OR WERE NOT SUPPLIED IN THE KIT, PLEASE TAKE PHOTOS AND THEN PROCEED TO CONTACT YOUR SUPPLIER.

1

Start by removing the roof channel trim on both sides using a plastic trim tool to gently pry up the clips. Refer Image 1 and 2.

NOTE: These will need to be set aside for later fitment.

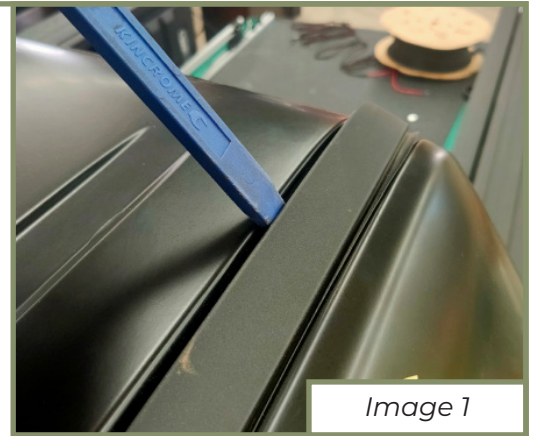


Image 1

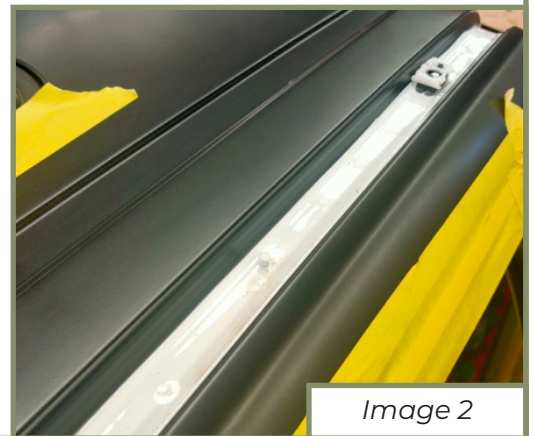


Image 2

2

2.1
Choose any side of the vehicle and measure 350mm back from the edge of the windscreen and mark a line inside the roof channel.

Refer Image 3.

2.2
Place one of the roof rail brackets supplied in the kit against this line and then mark the drill holes as well as another line rearwards edge of the bracket to measure the distance for the next bracket. Refer Image 4.



Image 3

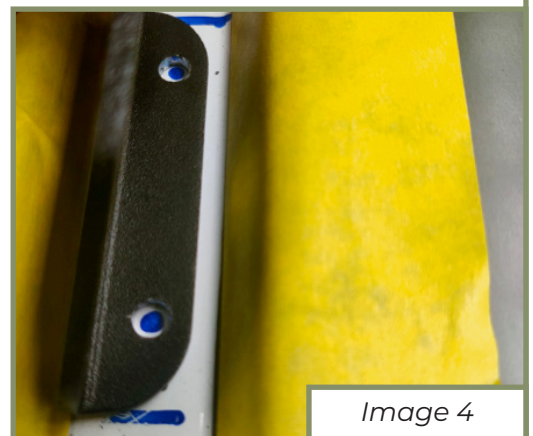


Image 4

NOTE: FAILURE TO INSTALL THIS PRODUCT AS SPECIFIED IN THE INSTALLATION PROCEDURE WILL VOID ALL WARRANTY. IF ANY PARTS HAVE ARRIVED DAMAGED OR WERE NOT SUPPLIED IN THE KIT, PLEASE TAKE PHOTOS AND THEN PROCEED TO CONTACT YOUR SUPPLIER.

3

3.1

Measure 440mm back from the rearward bracket line previously marked in step 2 and mark another line in the channel. *Refer Image 5.*



Image 5

3.2

Using the process from step 2, proceed to mark out the drill holes and another line on the rearwards edge of the bracket. *Refer Image 6.*



Image 6

4

4.1

Measure 465mm back from the rearwards bracket line previously marked in step 3. *Refer Image 7.*

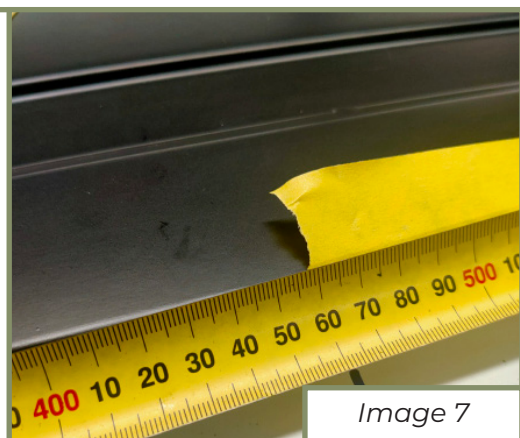


Image 7

4.2

Measure 465mm back from the rearwards bracket line previously marked in step 3.

4.3

Once this has been done, repeat this whole process from step 2 to 4 on the other side of the vehicle.

NOTE: FAILURE TO INSTALL THIS PRODUCT AS SPECIFIED IN THE INSTALLATION PROCEDURE WILL VOID ALL WARRANTY. IF ANY PARTS HAVE ARRIVED DAMAGED OR WERE NOT SUPPLIED IN THE KIT, PLEASE TAKE PHOTOS AND THEN PROCEED TO CONTACT YOUR SUPPLIER.

5

5.1

Once both sides of the car have been marked, it's time to begin the drilling process.

NOTE: The roof of a 1500 DT has heat treated steel, you CANNOT drill on high speed as you will not get through the metal.

5.2

Center punch all marked holes and then using a small sharp pilot hole drill bit with a drill stop, drill all the holes marked in the previous steps. Refer Image 8.

5.3

Once the pilot holes have been drilled, use a step drill on slow speed and drill all holes out to 10mm. Refer Image 9.

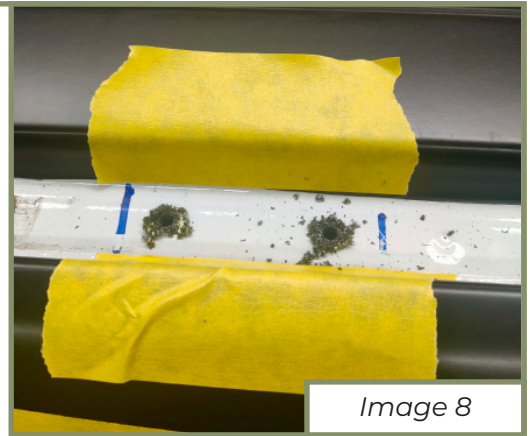


Image 8

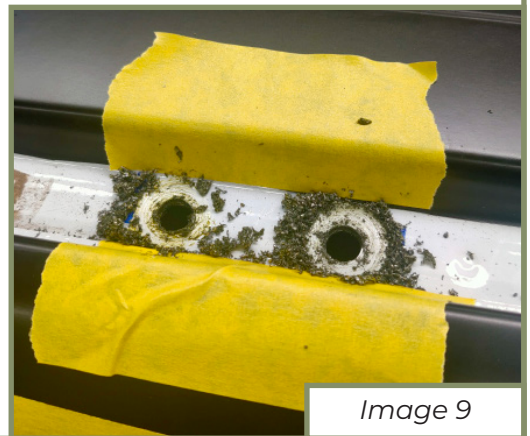


Image 9

6

6.1

Once all holes have been drilled blow off any excess metal from the roof.

6.2

Next use a rust preventative spray or paint all holes to prevent rust. Refer Image 10.



Image 10

7

Using a nutsert tool, proceed to install all 12 x 6mm thread nutserts which are provided in the kit. Refer Image 11.

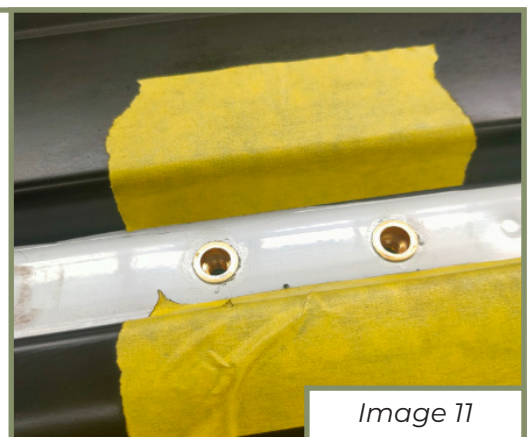


Image 11

NOTE: FAILURE TO INSTALL THIS PRODUCT AS SPECIFIED IN THE INSTALLATION PROCEDURE WILL VOID ALL WARRANTY. IF ANY PARTS HAVE ARRIVED DAMAGED OR WERE NOT SUPPLIED IN THE KIT, PLEASE TAKE PHOTOS AND THEN PROCEED TO CONTACT YOUR SUPPLIER.

8

8.1

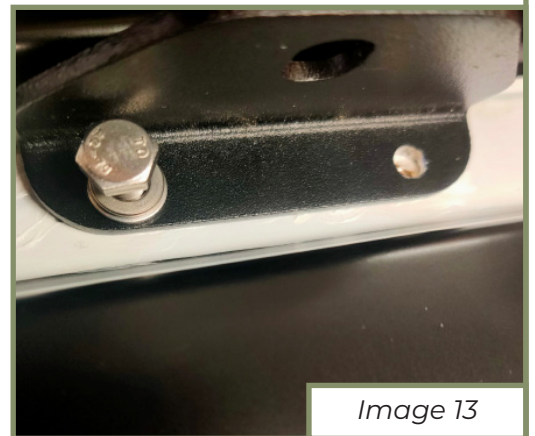
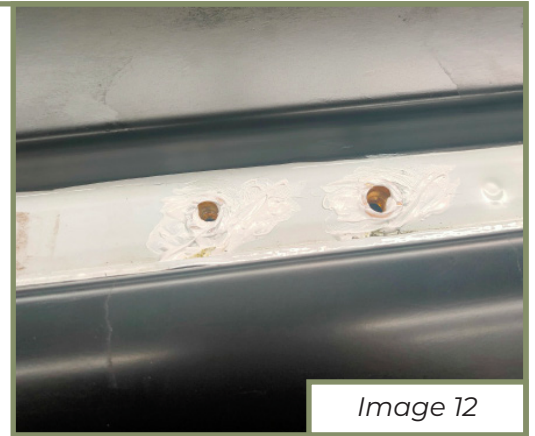
Using a nutsert tool, proceed to install all 12 x 6mm thread nutserts which are provided in the kit.

Refer Image 12.

8.2

Measure 465mm back from the rearwards bracket line previously marked in step 3.

Refer Image 13 & 14.



NOTE: FAILURE TO INSTALL THIS PRODUCT AS SPECIFIED IN THE INSTALLATION PROCEDURE WILL VOID ALL WARRANTY. IF ANY PARTS HAVE ARRIVED DAMAGED OR WERE NOT SUPPLIED IN THE KIT, PLEASE TAKE PHOTOS AND THEN PROCEED TO CONTACT YOUR SUPPLIER.

9

9.1

Locate the roof channel trim inwards against the mounting brackets and mark a line of where to cut each section of the trim to fit around the brackets. *Refer Image 15.*

9.2

Using a nutsert tool, proceed to install all 12 x 6mm thread nutserts which are provided in the kit. *Refer Image 16 & 17.*

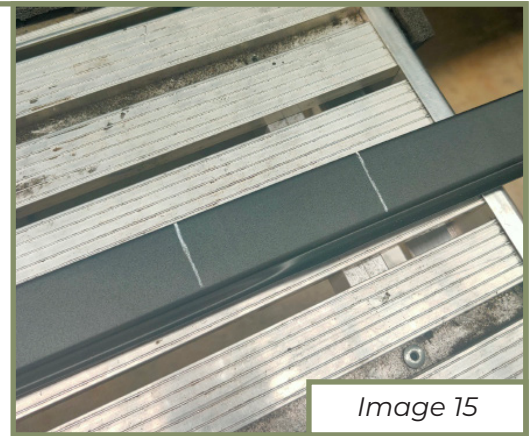


Image 15



Image 16

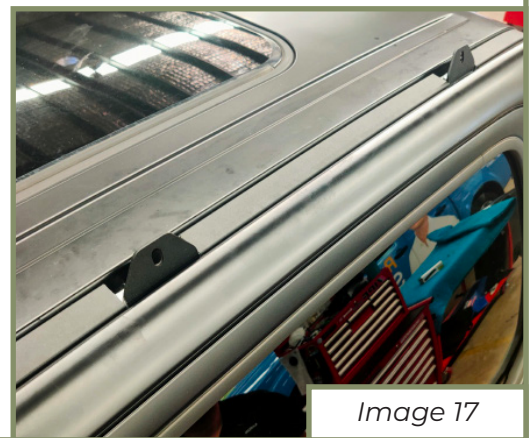


Image 17

NOTE: FAILURE TO INSTALL THIS PRODUCT AS SPECIFIED IN THE INSTALLATION PROCEDURE WILL VOID ALL WARRANTY. IF ANY PARTS HAVE ARRIVED DAMAGED OR WERE NOT SUPPLIED IN THE KIT, PLEASE TAKE PHOTOS AND THEN PROCEED TO CONTACT YOUR SUPPLIER.

10

10.1

Place some cardboard or a blanket on the ground and begin to pre-assemble the roof rack.

10.2

Using the M8 spring nuts, M8 Allen key head bolts, M8 spring washers and M8 washers supplied in the kit, proceed to install the provided cross rails to the Adventure Rail Backbones. Leaving all of these bolts loose at this stage. Refer Image 18.

NOTE: Place some cardboard or a blanket on the ground and begin to pre-assemble the roof rack.



Image 18

11

11.1

With the help of a second person, proceed to lift the assembly onto the roof and secure the backbones to the roof channel brackets using M8 allen key head bolts, M8 washers and M8 lock nuts supplied in the kit.

Refer Image 19.

11.2

Once all bolts are in, begin to tighten all roof rack bolts starting with the backbone mounting brackets first on each side and then tighten all the cross rail bolts.

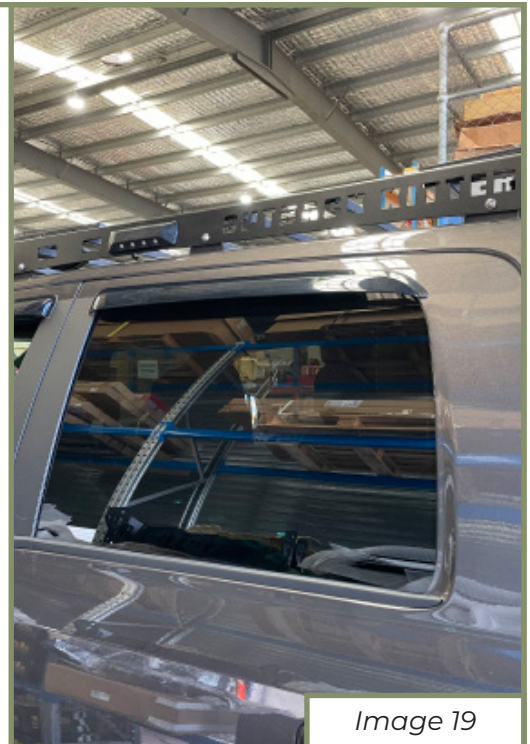


Image 19

12

Once all bolts are tight, clean the roof and roof rails to remove all marks and handprints.

INSTALLATION COMPLETE!

NOTE: FAILURE TO INSTALL THIS PRODUCT AS SPECIFIED IN THE INSTALLATION PROCEDURE WILL VOID ALL WARRANTY. IF ANY PARTS HAVE ARRIVED DAMAGED OR WERE NOT SUPPLIED IN THE KIT, PLEASE TAKE PHOTOS AND THEN PROCEED TO CONTACT YOUR SUPPLIER.