

## INSTALLATION INSTRUCTIONS

### RAM 1500 DS ADVENTURE RAILS

NOTE: FAILURE TO INSTALL THIS PRODUCT AS SPECIFIED IN THE INSTALLATION PROCEDURE WILL VOID ALL WARRANTY. IF ANY PARTS HAVE ARRIVED DAMAGED OR WERE NOT SUPPLIED IN THE KIT, PLEASE TAKE PHOTOS AND THEN PROCEED TO CONTACT YOUR SUPPLIER.

#### IN THE BOX

- 6 x Roof mounting brackets
- 1 x LHS adventure rail backbone
- 1 x RHS adventure rail backbone
- 8 x Cross rails
- 1 x Wind deflector
- 1 x Wind deflector bolt kit
- 1 x Adventure rail bolt kit

#### TOOLS REQUIRED

- Drill, drill bits
- Drill stop
- Step drill
- Nutsert tool
- Air blower
- Tape measure
- Ratchet or battery ratchet
- Various sized sockets
- Allen key set
- 13mm spanner
- Sikaflex or waterproof sealant
- Air Saw or Hacksaw
- Paint/rust preventative spray
- Plastic trim tool



1

**1.1**

Start by using a plastic trim tool to remove the roof channel trim on both sides.

*Refer Image 1*

**NOTE:** These will need to be set aside for later fitment.



**1.2**

Using a caramel wheel with a drill, remove the excess double sided tape left

within the channel on both sides of the car. *Refer Image 2 and 3.*



*Image 3*



*Image 4*

NOTE: FAILURE TO INSTALL THIS PRODUCT AS SPECIFIED IN THE INSTALLATION PROCEDURE WILL VOID ALL WARRANTY. IF ANY PARTS HAVE ARRIVED DAMAGED OR WERE NOT SUPPLIED IN THE KIT, PLEASE TAKE PHOTOS AND THEN PROCEED TO CONTACT YOUR SUPPLIER.

2

**2.1**

Start on any side of the car, measure 280mm back from the edge of the rubber

windscreen trim and mark a line inside the roof channel. Refer Image 4 and 5.

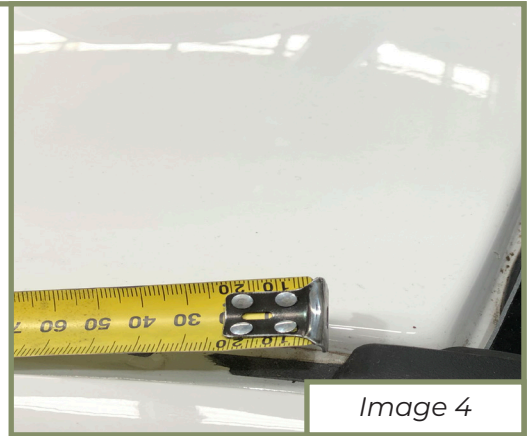


Image 4

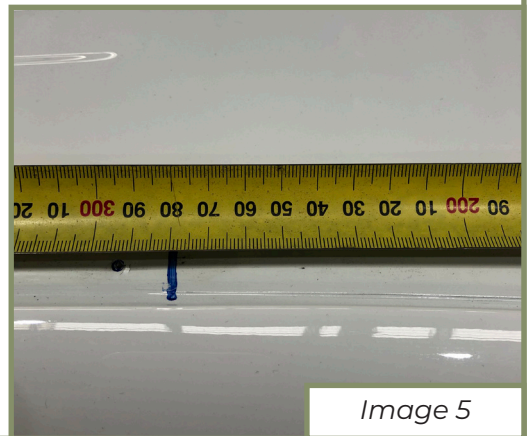


Image 5

**2.2**

Place one of the roof rail brackets supplied in the kit against this line and then

mark the drill holes as well as another line rearwards edge of the bracket to measure

the distance for the next bracket.

Refer Image 6 and 5.



Image 7

NOTE: FAILURE TO INSTALL THIS PRODUCT AS SPECIFIED IN THE INSTALLATION PROCEDURE WILL VOID ALL WARRANTY. IF ANY PARTS HAVE ARRIVED DAMAGED OR WERE NOT SUPPLIED IN THE KIT, PLEASE TAKE PHOTOS AND THEN PROCEED TO CONTACT YOUR SUPPLIER.

3

**3.1**

Measure 445mm back from the rearward bracket line previously marked in step 2- B) and mark another line in the channel.

*Refer to figures 7 and 8.*

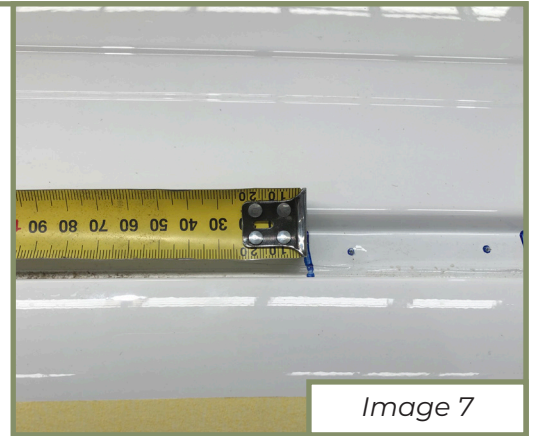


Image 7

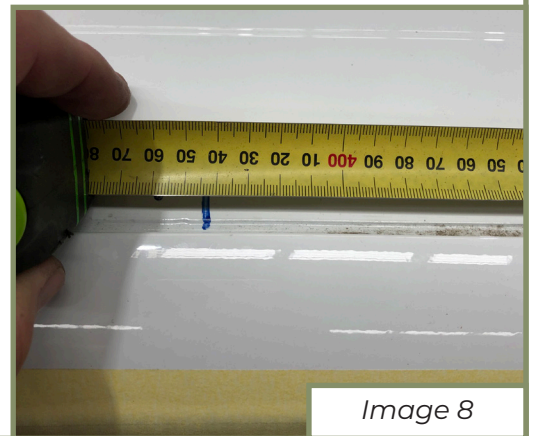


Image 8

**3.2**

Using the process from step 2 - B), proceed to mark out the drill holes and another line on the rearwards edge of the bracket.

*Refer Image 9.*



Image 9

4

Measure 460mm back from the rearwards bracket line previously marked in step 3 - B).

*Refer Image 10 and 11.*

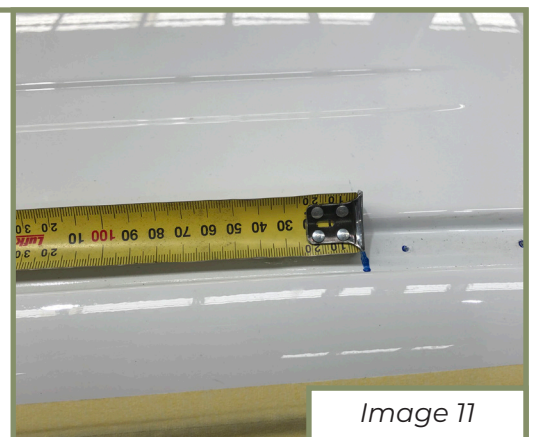


Image 11

NOTE: FAILURE TO INSTALL THIS PRODUCT AS SPECIFIED IN THE INSTALLATION PROCEDURE WILL VOID ALL WARRANTY. IF ANY PARTS HAVE ARRIVED DAMAGED OR WERE NOT SUPPLIED IN THE KIT, PLEASE TAKE PHOTOS AND THEN PROCEED TO CONTACT YOUR SUPPLIER.

**4.2**

Repeat the previous process to mark out the drill holes for the last bracket. Once this has been done, repeat this whole process from step 2 to 4 on the other side of the car.

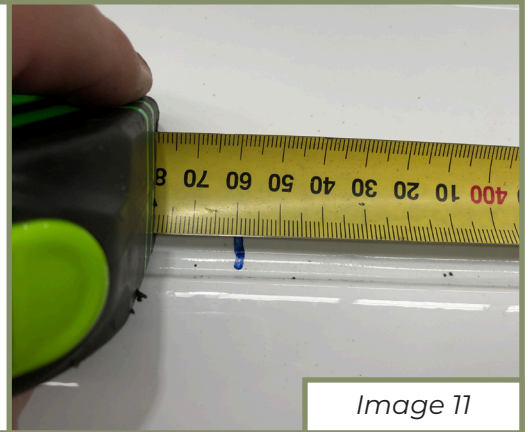


Image 11

**5**

**5.1**

Once both sides of the car have been marked, using a small sharp pilot hole drillbit, drill all the holes marked with the brackets in the previous steps.

NOTE: Be sure to use a drill stop with drill bits so as to not drill too far down into the channel and hit the wiring/airbag.

Refer Image 12



Image 12

**5.2**

Once the pilot holes have been drilled, drill all holes out to 10mm.

Refer Image 13

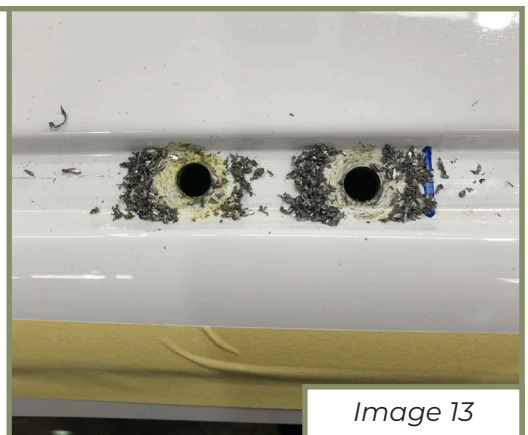


Image 13

NOTE: FAILURE TO INSTALL THIS PRODUCT AS SPECIFIED IN THE INSTALLATION PROCEDURE WILL VOID ALL WARRANTY. IF ANY PARTS HAVE ARRIVED DAMAGED OR WERE NOT SUPPLIED IN THE KIT, PLEASE TAKE PHOTOS AND THEN PROCEED TO CONTACT YOUR SUPPLIER.

6

**6.1**

Once all holes have been drilled, blow off any excess metal from the roof.

**6.2**

Next use a rust preventative spray or paint the hole to prevent rust, be sure to wipe off any excess spray.

*Refer Image 14*



Image 14

7

Once all holes are dry, using a nutsert tool, proceed to install all 12 6mm threadnutserts which are provided in the kit on both sides of the vehicle. Refer to figures.

*Refer Image 15 and 16.*

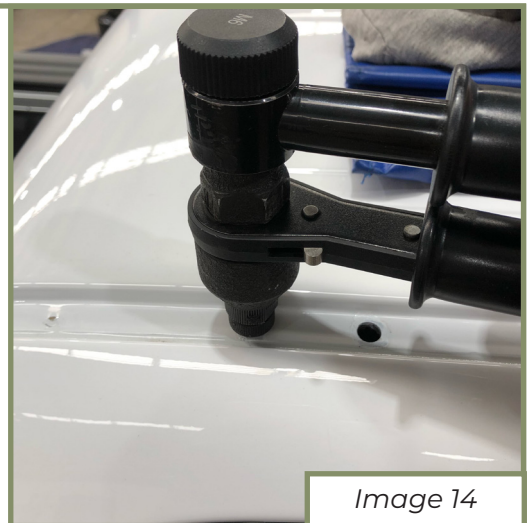


Image 14



Image 14

NOTE: FAILURE TO INSTALL THIS PRODUCT AS SPECIFIED IN THE INSTALLATION PROCEDURE WILL VOID ALL WARRANTY. IF ANY PARTS HAVE ARRIVED DAMAGED OR WERE NOT SUPPLIED IN THE KIT, PLEASE TAKE PHOTOS AND THEN PROCEED TO CONTACT YOUR SUPPLIER.

8

**8.1**

Once all nutserts have been installed, apply a small ring of silicone or sikaflex around each nutsert.

*Refer Image 17.*

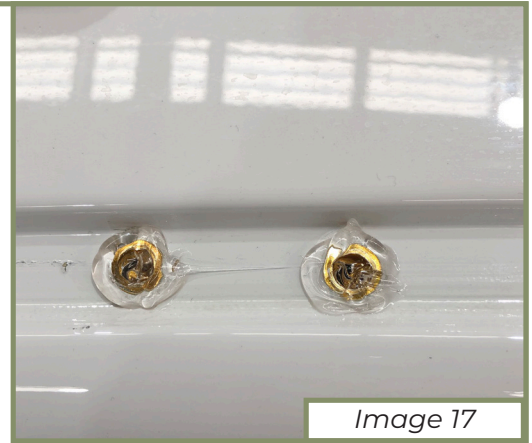


Image 17

**8.2**

Proceed to install each roof mount bracket with supplied M6 bolts, M6 spring washers and M6 washers and tighten all bolts.

*Refer Image 18.*



Image 18

9

For each side, place the trim inwards against the mounting brackets and mark a line of where to cut each section. Cut each section of the trim out, clean up all edges and then re-install trim pieces using double sided tape or sikaflex.

*Refer to figures 19 and 20.*



Image 19



Image 20

NOTE: FAILURE TO INSTALL THIS PRODUCT AS SPECIFIED IN THE INSTALLATION PROCEDURE WILL VOID ALL WARRANTY. IF ANY PARTS HAVE ARRIVED DAMAGED OR WERE NOT SUPPLIED IN THE KIT, PLEASE TAKE PHOTOS AND THEN PROCEED TO CONTACT YOUR SUPPLIER.

10

**10.1**

Use a folding stand or some cardboard/blanket on the ground to begin the pre-assembling of the roof rack.

**10.2**

Using the spring nuts, M8 allen key head bolts, M8 spring washers and M8 washers supplied in the bolt kit, proceed to loosely install the provided cross strengthening rails to the Adventure Rail Backbones.

**NOTE:** if installing a wind deflector shield then this will need to be done at the same time and mounts directly

to the top. Refer to figure 21.



Image 21

11

With the help of a second person, proceed to lift the assembly onto the roof and secure the backbones to the roof channel brackets using M8 allen key head bolts, M8 washers and M8 lock nuts supplied in the kit.

Refer to figure 22.

Once all bolts are in, begin to tighten all roof rack bolts starting with the backbone mounting brackets first on each side and then tighten all the cross rail bolts.



Image 22

12

Once all bolts are tight, wipe down the roof and roof rails to remove all marks and handprints.

**INSTALLATION COMPLETE!**

NOTE: FAILURE TO INSTALL THIS PRODUCT AS SPECIFIED IN THE INSTALLATION PROCEDURE WILL VOID ALL WARRANTY. IF ANY PARTS HAVE ARRIVED DAMAGED OR WERE NOT SUPPLIED IN THE KIT, PLEASE TAKE PHOTOS AND THEN PROCEED TO CONTACT YOUR SUPPLIER.